



CITY OF NAPLES AIRPORT AUTHORITY

QUARTERLY NOISE REPORT

NUMBER 39

For the period

July 1, 2006 through September 30, 2006

Prepared by
Airport Operations

TABLE OF CONTENTS

	Page
INTRODUCTION	1
PART I AIRCRAFT OPERATIONS	1
Table I	Airport Traffic Summary 2
Figure IA	Total Monthly Operations 3
Figure IB	Total Night Operations by Month 4
Table II	Quarterly Air Traffic Nighttime Operations Summary 5
Figure IC	Fiscal year Air Traffic Nighttime Operations 5
Table IIA	Fiscal Year Percentage of Nighttime Operations 6
PART II CITIZEN COMPLAINTS	7
Table III	Airport Noise Complaint Summary 8
Figure IIA	Noise Complaints by Geographical Area 9
PART III COMPLAINTS BY TIMEFRAME	10
Figure IIIA	Noise Complaints by Hour 10
Figure IIIB	Noise Complaints by Month 10
PART IV COMPLAINTS BY OPERATIONAL SOURCE	11
Figure IVA	Complaints by Type Aircraft 11
Figure IVB	Air Ambulance Operations & Complaints 11
PART V COMPLAINTS BY OPERATION	12
Figure V	Complaints by Operations 12
SUMMARY	13
Appendix A	Total Aircraft Operations and Complaints
Appendix B	Noise Complaints vs. Number of Households
Appendix C	Noise Complaint / Operations Summary (July/Aug./Sept.)

**PART I
AIRCRAFT OPERATIONS**

INTRODUCTION

This is the thirty-ninth Quarterly Noise Report prepared by the City of Naples Airport Authority - Airport Operations Department. This report is informational in nature. The data included in this report tracks aircraft operations and noise complaints. The information contained in this report is fiscal year (Oct. – Sept.). All percentages are rounded to the nearest percent.

AIRCRAFT OPERATIONS

Table I, page 2, Airport Traffic Summary, contains aircraft movement data from FAA Form 7230-1 and after hour statistics recorded by the City of Naples Airport Authority Security Officers. Naples Air Traffic Control Tower is operational from 6:00 AM through 10:00 PM. A single movement represents either one arrival or one departure by the indicated aircraft category.

This Quarter Compared to Previous Quarter

Compared to the previous quarter, air carrier traffic has decreased by 50%, general aviation activity has decreased by 21% and total traffic decreased by 24%, from 34,075 operations to 25,987. The daily average for the Fourth Quarter was 282 operations.

This Quarter Compared to the Same Period One Year Ago

Compared to the same period last year, air carrier traffic has nearly remained the same and general aviation air traffic has decreased 24%. Total air traffic operations decreased by 23% from 33,848 operations to 25,987.

Fiscal Year 2005 Compared to Fiscal Year 2006

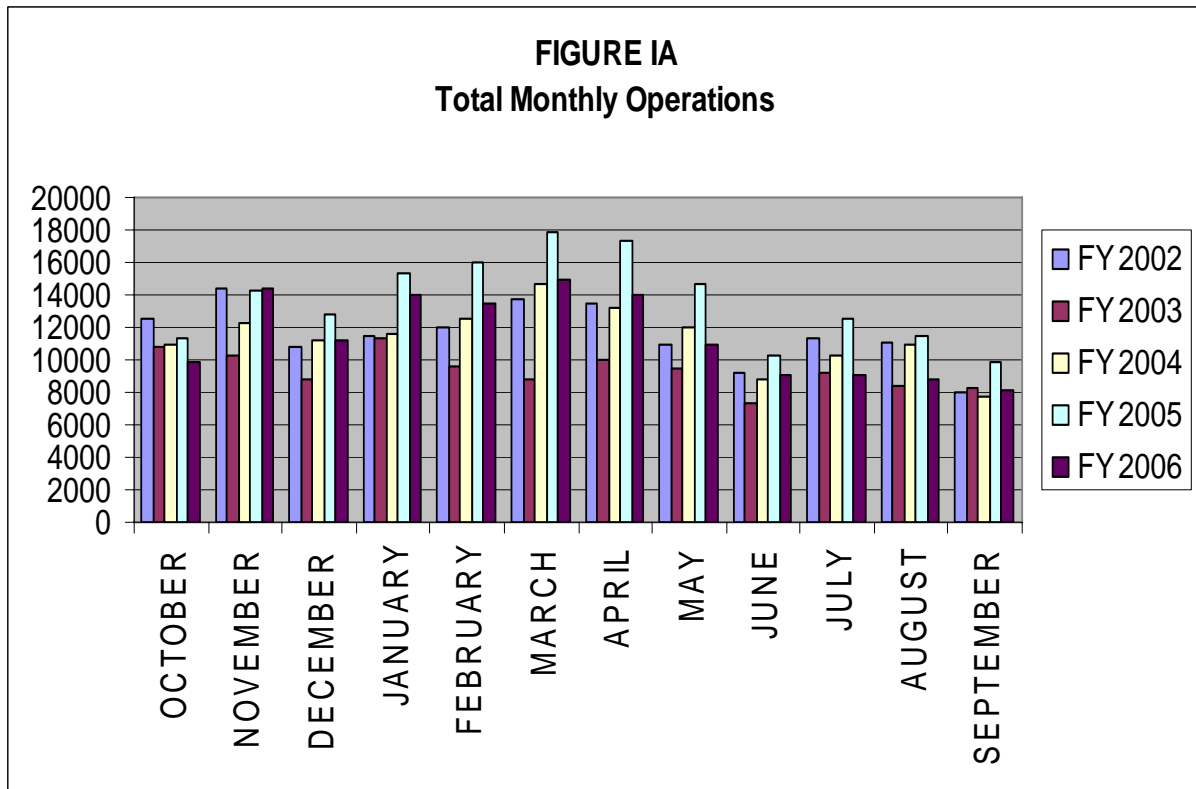
FY06 operations have decreased by 25,526 operations (16%), from 163,434 to 137,908 operations when compared to FY05. Itinerant operations decreased 9%, from 111,975 to 101,540 operations, and local operations have decreased 30%, from 51,349 to 36,175 operations. Itinerant operations accounted for 74% of the total airport operations in FY06. IFR operations decreased by 3%, from 46,428 to 45,196.

Table I

AIRPORT TRAFFIC SUMMARY
Landings and Takeoffs
Fiscal Years 2005-2006

YEAR	AIR CARRIER	GENERAL AVIATION	MILITARY	TOTAL TRAFFIC	DAILY AVERAGE
2005					
JULY	444	12,081	2	12,527	404
AUGUST	462	10,948	13	11,423	369
SEPTEMBER	538	9,358	2	9,898	330
	1,444	32,387	17	33,848	368
TOTALS FOR FY05	13,890	149,429	115	163,434	449
2006					
OCTOBER	801	9,094	30	9,925	320
NOVEMBER	1,254	13,188	3	14,445	482
DECEMBER	1,178	10,018	6	11,202	361
TOTALS FOR 1st QUARTER	3,233	32,300	39	35,572	388
JANUARY	1,535	12,412	16	13,963	450
FEBRUARY	1,656	11,758	13	13,427	480
MARCH	1,652	13,230	2	14,884	480
TOTALS FOR 2nd QUARTER	4,843	37,400	31	42,274	470
APRIL	1,352	12,685	4	14,041	468
MAY	894	10,020	-	10,914	352
JUNE	613	8,507	-	9,120	304
TOTALS FOR 3rd QUARTER	2,859	31,212	4	34,075	375
JULY	467	8,551	28	9,046	292
AUGUST	492	8,338	8	8,838	285
SEPTEMBER	477	7,622	4	8,103	270
TOTALS FOR 4th QUARTER	1,436	24,511	40	25,987	282
TOTALS FOR FY06	12,371	125,423	114	137,908	379

Figure IA below illustrates the airport's month-by-month total operational levels for fiscal years 2002, 2003, 2004, 2005 and 2006.



There was a 23% decrease in overall airport operations during the Fourth Quarter of 2006 when compared to the same period in 2005.

Night Time Operations

Figure IB, below, illustrates the airport's total nighttime (10:00 PM – 7:00 AM) operational levels for fiscal year 2002, 2003, 2004, 2005 and 2006.

Total nighttime operations have decreased by eleven percent (11%) in the Fourth Quarter of 2006 when compared to the Fourth Quarter 2005 statistics. Jet operations occurring at night decreased by 62 and single and multi-engine aircraft operations decreased by 69.

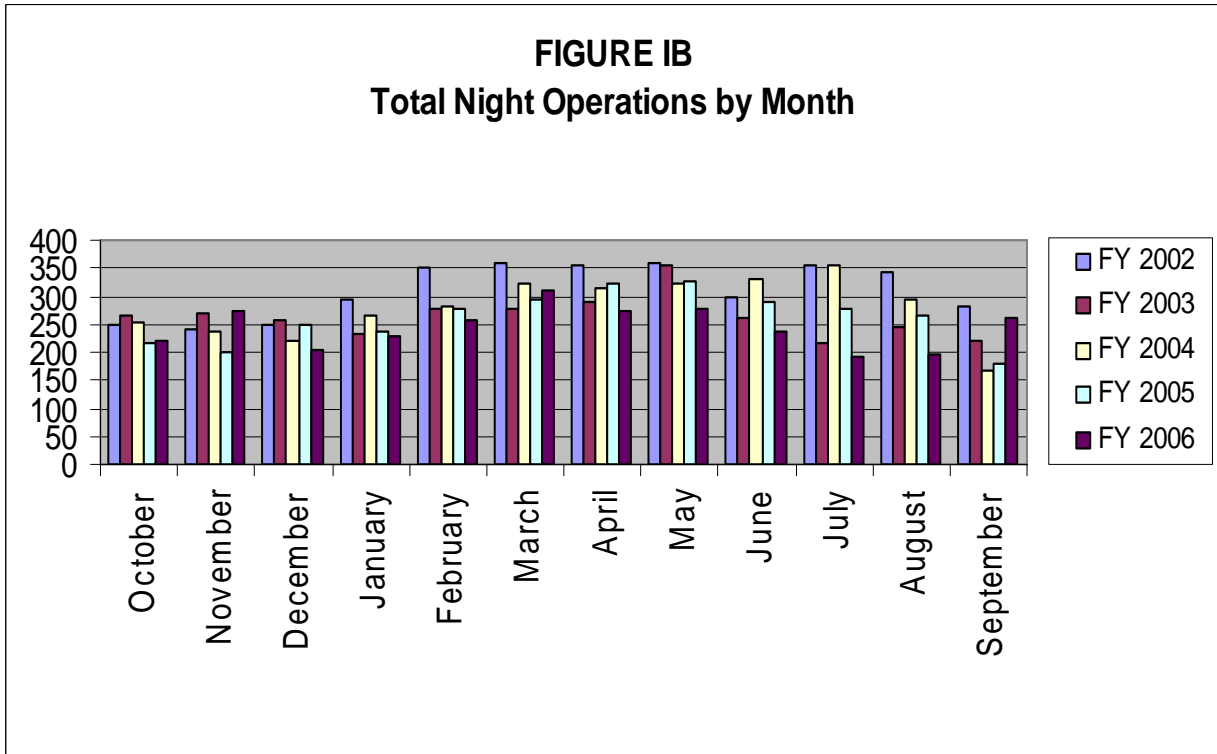


Table II, below, summarizes the types of nighttime operations occurring at the airport during the previous five quarters. Nighttime operations include voluntary curfew hours (10:00 PM through 7:00 AM).

As compared to the same time last year, the number of air ambulance operations has remained the same. Single and Multi-engine aircraft operations have decreased by 18%. Public Service operations represent 30% of the activity occurring at night. Nighttime operations accounted for two percent (2%) of the overall operations for the Fourth Quarter of 2006.

Table II
Quarterly Air Traffic Nighttime Operations Summary – by Fiscal Year

Activity	4 th 2005	1 st 2006	2 nd 2006	3 rd 2006	4 th 2006
Jets					
Air Ambulance	3	8	8	2	3
Air Carrier	114	98	105	85	64
GA	84	204	296	181	72
Subtotal Jets	201	310	409	268	139
Single & Multi-engine (includes air carrier & GA)	383	233	279	345	314
Public Service					
Mosquito Control Operations	41	14	0	22	74
Collier Sheriff's Office	67	107	95	121	110
EMS	32	35	13	35	10
Coast Guard	0	0	2	0	0
Subtotal Public Service	140	156	110	178	194
Total	724	699	798	791	647

Figure IC, below, illustrates the airport's total nighttime (10:00 PM – 7:00 AM) operational levels for fiscal years 2001 through 2006, and shows a steady decline in night operations over the last five fiscal years.

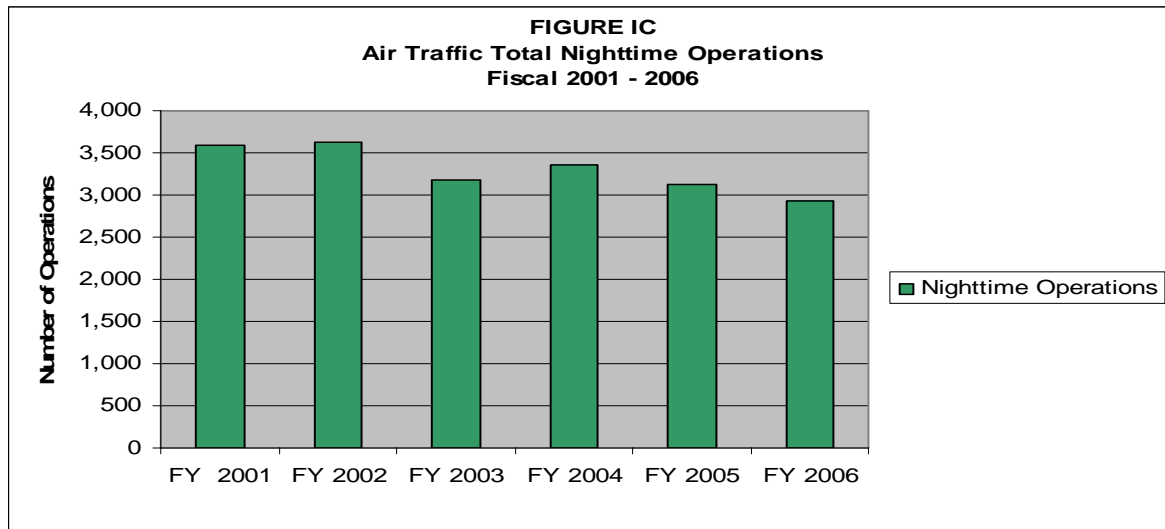


Table II A, depicts the percentage of nighttime operations as compared to total operations for the last five fiscal years. Night operations represent three percent (3%) for FY 02 – 03 and two percent (2%) of the total operations for FY 04, FY 05 and FY 06. This is a one percent (1%) decrease when compared to FY 02 – 03.

Table II A
Fiscal Year Percentage of Nighttime Operations

Fiscal Year	Total Operations	Night Operations	% of Night Ops	% of Jet Night Ops
2002	138,790	3,626	3%	21%
2003	112,308	3,170	3%	23%
2004	136,128	3,361	2%	23%
2005	163,434	3,130	2%	34%*
2006	137,908	2,935	2%	38%*

* Delta began CRJ service in FY05. They had 328 nighttime operations in FY 05 and 352 nighttime operations in FY 06. Without Delta's operations, the percentage of jet night operations in FY05 would have been twenty-four percent (24%) of the total nighttime operations and twenty-six percent in FY 06.

PART II CITIZEN COMPLAINTS

Table III, on page 7, is a summary of citizen noise complaints separated according to four geographical areas (Quadrants). Below is a sample representation of the neighborhoods in each Quadrant. Every neighborhood in the area is not included in this list, although it is included in the Quadrant total.

Northeast Quadrant - Briarwood, Coconut River Estates, Golden Gate, Grey Oaks, Hawks Ridge, Wyndemere, and surrounding northeast areas.

Northwest Quadrant - Bears Paw, Coconut River Estates, Coquina Sands, Country Club of Naples, Lake Forest, Lake Park, Park Shore, Ridge Lakes, River Estates, River Reach, Sun Terrace, Moorings, Wilderness, and surrounding northwest areas.

Southwest Quadrant - Aqualane Shores, Old Naples, Port Royal, Royal Harbor, and surrounding southwest neighborhoods.

Southeast Quadrant - Brookside, Coconut Grove, Flamingo Estates, Foxfire, Kings Lake, Lakewood, Naples Gardens, Rock Creek Campground, The Glades, and surrounding neighborhoods.

The analysis will include the specific nature of the complaint, whether it was an arriving or departing aircraft or an overflight. Complaints relative to nighttime Mosquito Control operations, Air Ambulance Flights, Sheriff's Office and EMS helicopter operations are included in this report.

This Quarter Compared to Previous Quarter

This quarter's noise complaints, compared to the previous quarter, have decreased from 166 to 8. Complaints received from neighborhoods to the northeast of the airport have decreased by 25, from the northwest they have decreased by 2, from the southeast they have decreased by 2, from the southwest decreased by 130 and unknown increased by 1.

This Quarter Compared to the Same Period One Year Ago

Compared to the same period last year, the total number of complaints decreased by 1 call. Complaints received from neighborhoods to the northeast of the airport have increased by 2, from the northwest and the southeast they have remained the same, from the southwest decreased by 5 and unknown increased by 2. Total complaints received have decreased from 9 to 8.

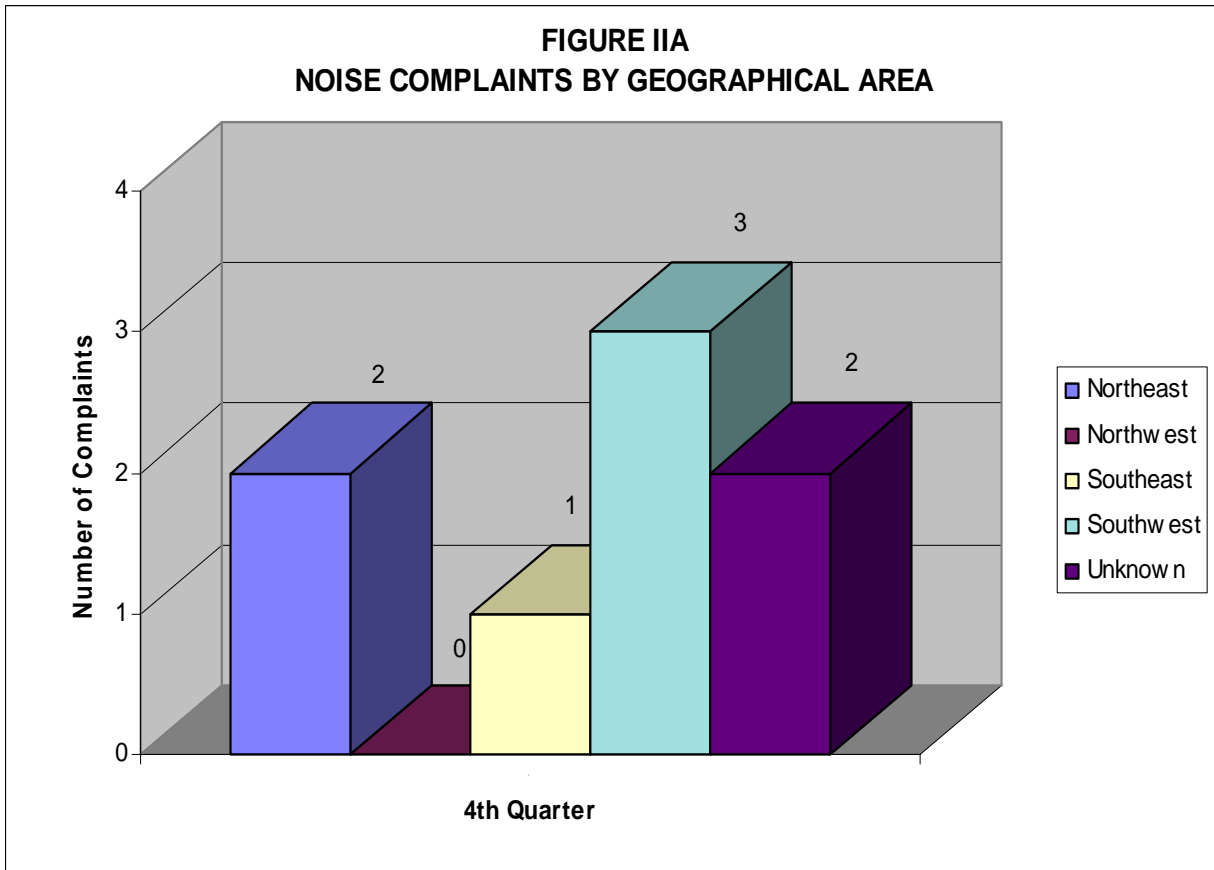
Fiscal Year 2005 Compared to Fiscal Year 2006

Complaints have decreased 13% in Fiscal Year 2006, from 401 in FY05 to 351 in FY06.

Table III
AIRPORT NOISE COMPLAINT SUMMARY
 Fiscal Years 2005-2006

YEAR	Northeast	Northwest	Southeast	Southwest	Unknown Location	Monthly Total
2005						
JULY	-	-	-	4	-	4
AUGUST	-	-	1	2	-	3
SEPTEMBER				2		2
TOTALS FOR 4th QUARTER	-	-	1	8	-	9
TOTALS FOR FY05	39	18	31	307	6	401
2006						
OCTOBER	-	-	-	2	-	2
NOVEMBER	5	5	7	9	1	27
DECEMBER	2	2	1	18	-	23
TOTALS FOR 1st QUARTER	7	7	8	29	1	52
JANUARY	2	9	6	12	-	29
FEBRUARY	4	-	-	50	-	54
MARCH	4	2	2	34	-	42
TOTALS FOR 2nd QUARTER	10	11	8	96	-	125
APRIL	12	1	3	116		132
MAY	14	1	-	15	1	31
JUNE	1			2		3
TOTALS FOR 3rd QUARTER	27	2	3	133	1	166
JULY			1	2	1	4
AUGUST	1			1		2
SEPTEMBER	1				1	2
TOTALS FOR 4th QUARTER	2	-	1	3	2	8
TOTALS FOR FY06	46	20	20	261	4	351

Figure IIA, below, graphically compares the noise complaints received by geographical areas based on data collected during the Fourth Quarter of 2006. Total complaints for this quarter have decreased by one complaint when compared to the same period one year ago.



During fiscal 2006, the southwest quad had five times more complaints than any of the other quads.

PART III COMPLAINTS BY TIMEFRAME

Figure IIIA, below, depicts noise complaints for the Fourth Quarter according to the time of the single event. Most complaints were received about operations occurring between 2:00 AM to 7:00 AM. All of the complaints during the voluntary curfew were from Public Service operations.

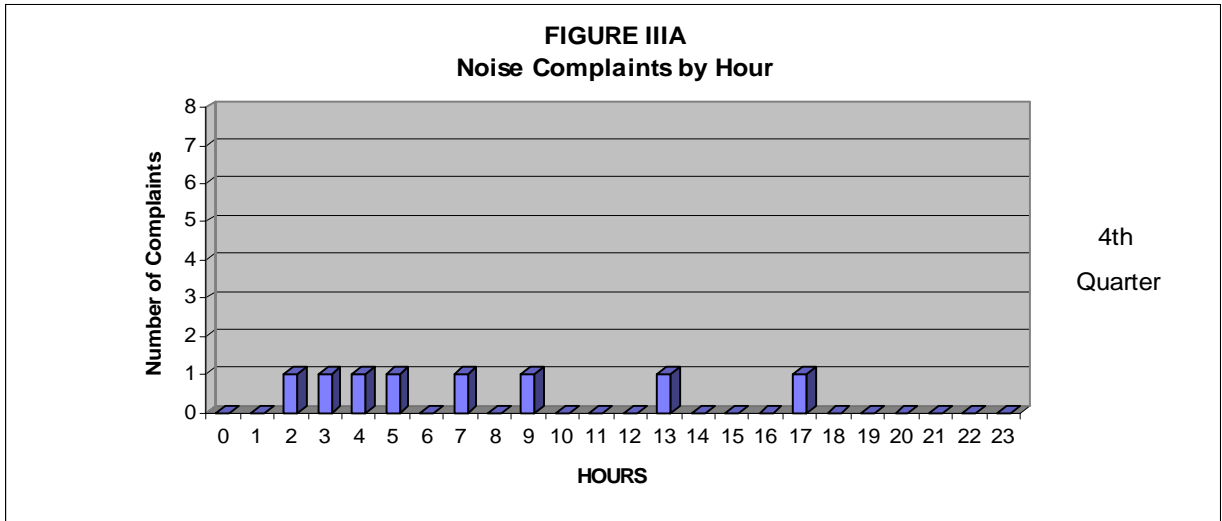
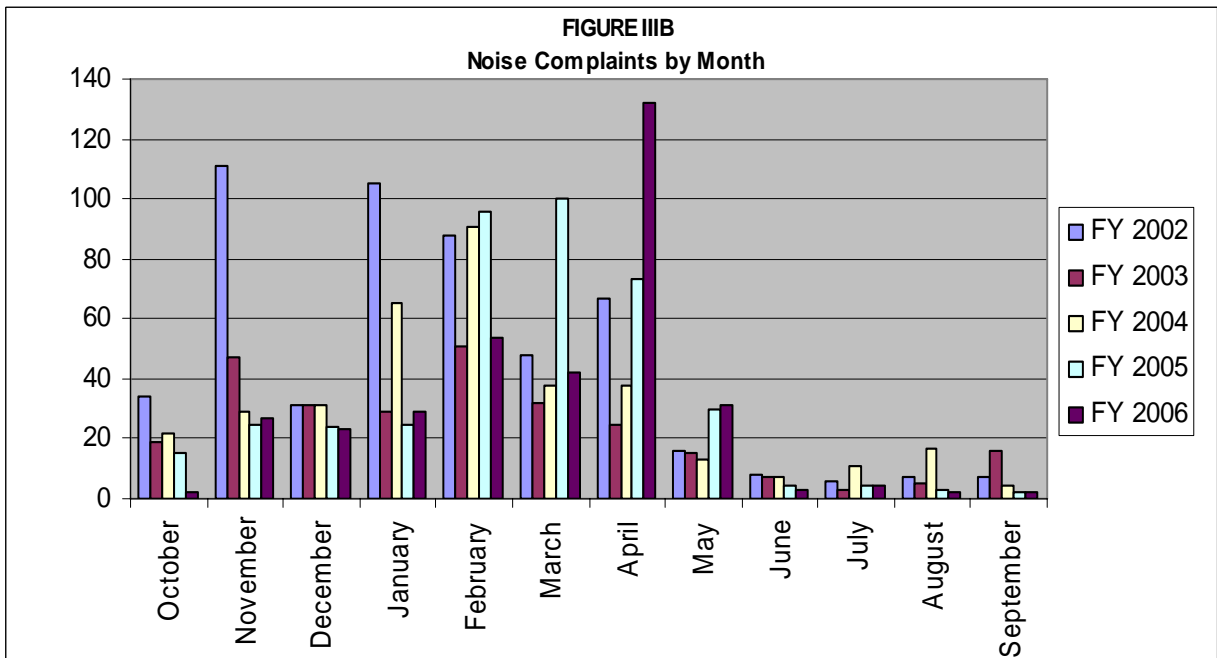


Figure IIIB below, illustrates the airport's complaint volume for fiscal years 2002, 2003, 2004, 2005 and 2006.



PART IV COMPLAINTS BY OPERATIONAL SOURCE

Figure IVA below, indicates what types of aircraft the complainants were calling about. Four (4) of the complaints were in regards to Mosquito Control operations.

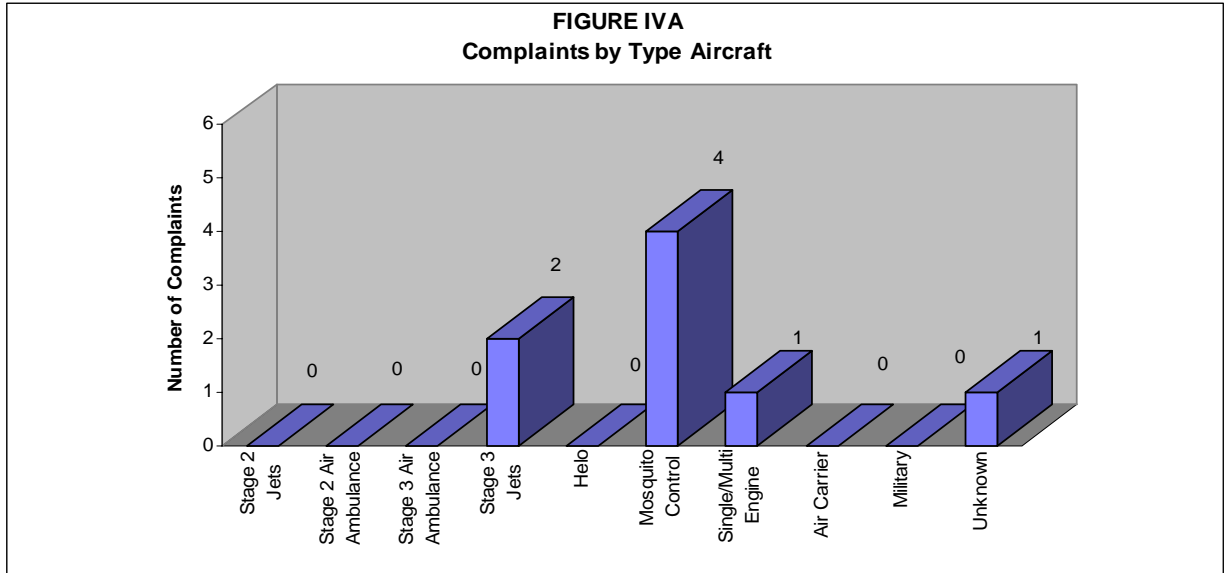
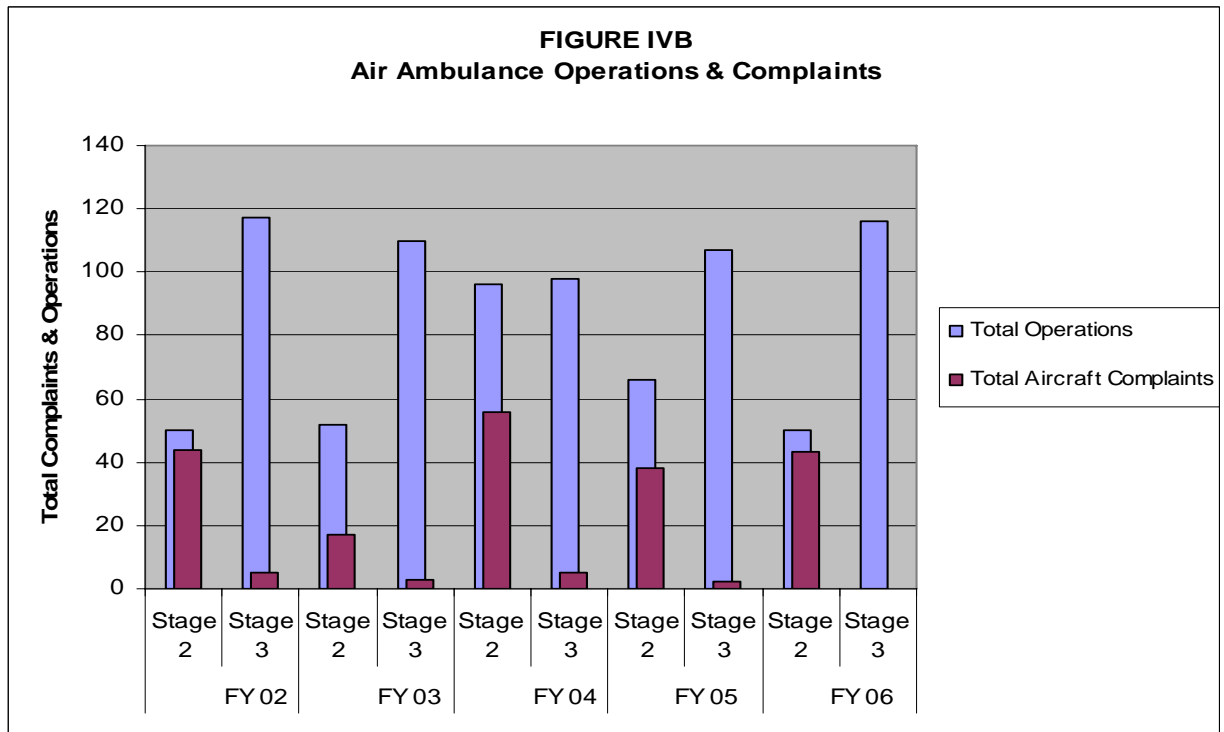
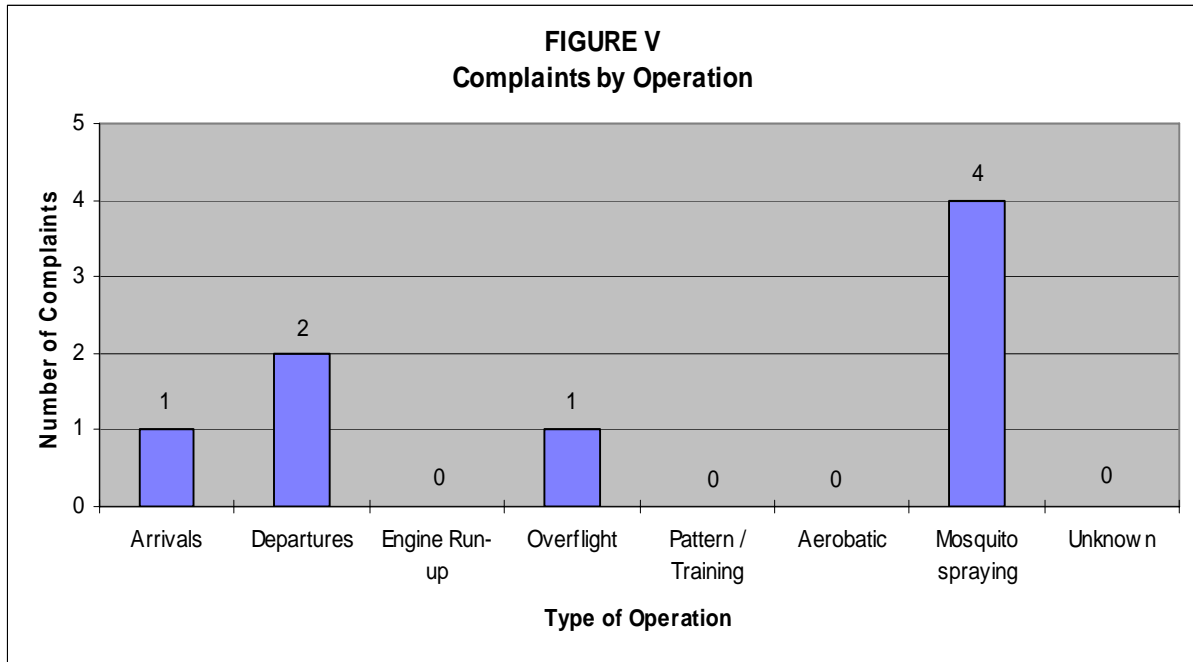


Figure IVB, below, depicts operations and noise complaints received from Stage 2 and Stage 3 Air Ambulances during FY 2002, 2003, 2004, 2005 and 2006.



**PART V
COMPLAINTS BY OPERATION**

Figure V, below, shows the operational source of the noise complaints from the Fourth Quarter of 2006.



SUMMARY

Air Traffic

Compared to the previous quarter, air carrier traffic has decreased 50%, general aviation traffic has decreased by 24%, and total air traffic has decreased by 24%. Compared to the same period one year ago, air carrier traffic stayed the same, general aviation operations have decreased by 24%, and total traffic has decreased 23%.

Nineteen percent (19%) of the total nighttime operations were attributed to Emergency Services helicopters and air ambulance jet aircraft and ten percent (10%) of the operations were attributed to air carrier service. Jet aircraft operations at night have decreased by sixty-two (62) operations when compared to same period last year. Single and multi-engine aircraft operations have decreased by sixty-nine (69) operations and Mosquito Control operations have increased by thirty-three (33) operations. Overall nighttime operations have decreased by seventy-seven (77) operations when compared to last year.

Noise Complaints

Compared to the previous quarter, noise complaints have decreased from 166 to 8. Southwest Quadrant neighborhoods generated the most complaints during the Fiscal Fourth Quarter of 2006, with a total of 3 complaints. Other areas generated the following number of complaints: Northeast-2, Northwest-0, Southeast-1 and Unknown locations-2.

Noise Complaints by Family

Seven (7) different families made 8 complaints to the Noise Abatement Office during the Fourth Quarter of 2006.

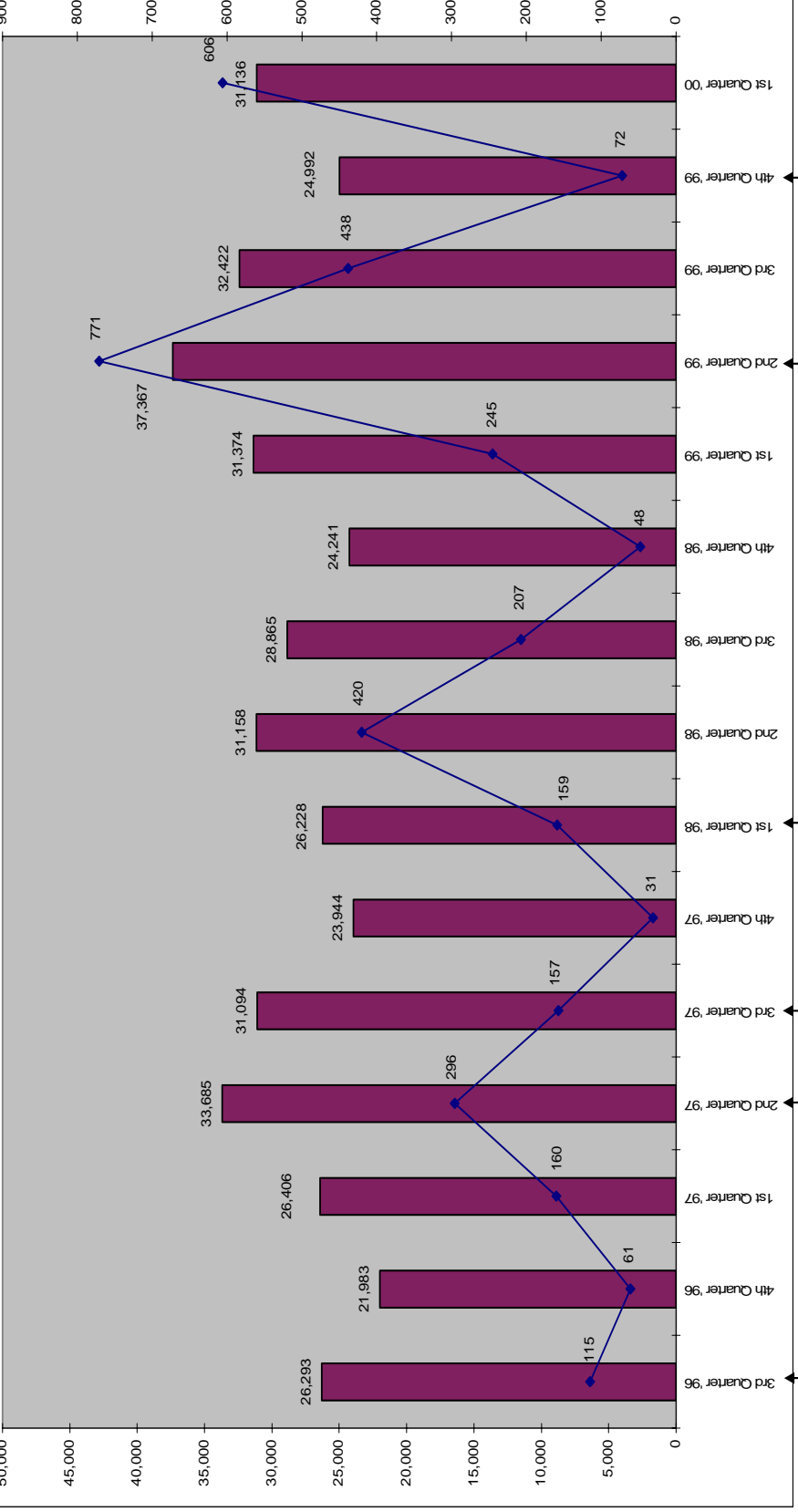
Air Traffic - Fiscal Year 2005 Compared to Fiscal Year 2006

FY06 operations have decreased by 25,526 operations (16%), from 163,434 to 137,908 operations when compared to FY05. Itinerant operations decreased 9%, from 111,975 to 101,540 operations, and local operations have decreased 30%, from 51,349 to 36,175 operations. Itinerant operations accounted for 74% of the total airport operations in FY06. IFR operations decreased by 3%, from 46,428 to 45,196.

Complaints - Fiscal Year 2004 Compared to Fiscal Year 2005

Complaints have decreased 13% in Fiscal Year 2006, from 401 in FY05 to 351 in FY06.

Total Aircraft Operations and Complaints
Fiscal Year
3rd Quarter 1996 - 1st Quarter 2000



Long-Term Noise Monitoring Program Begins July 1999

24 hour Stage 1 Jet Aircraft Ban begins March 1999

Noise Compatibility Committee recommends total ban on Stage 1 jet aircraft

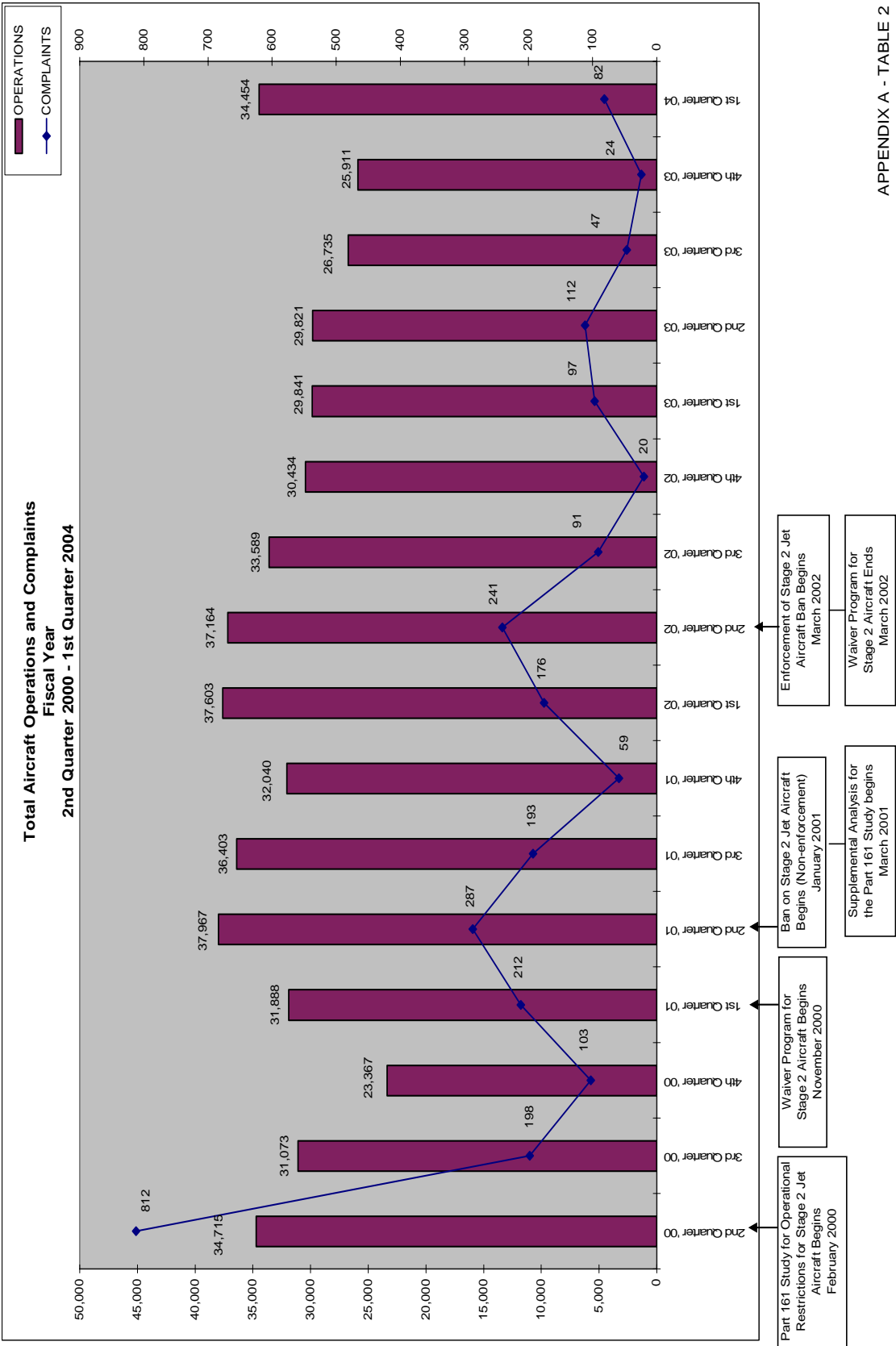
Jet Aircraft Noise Abatement Brochure Developed

Noise Compatibility Committee Formed January 1997

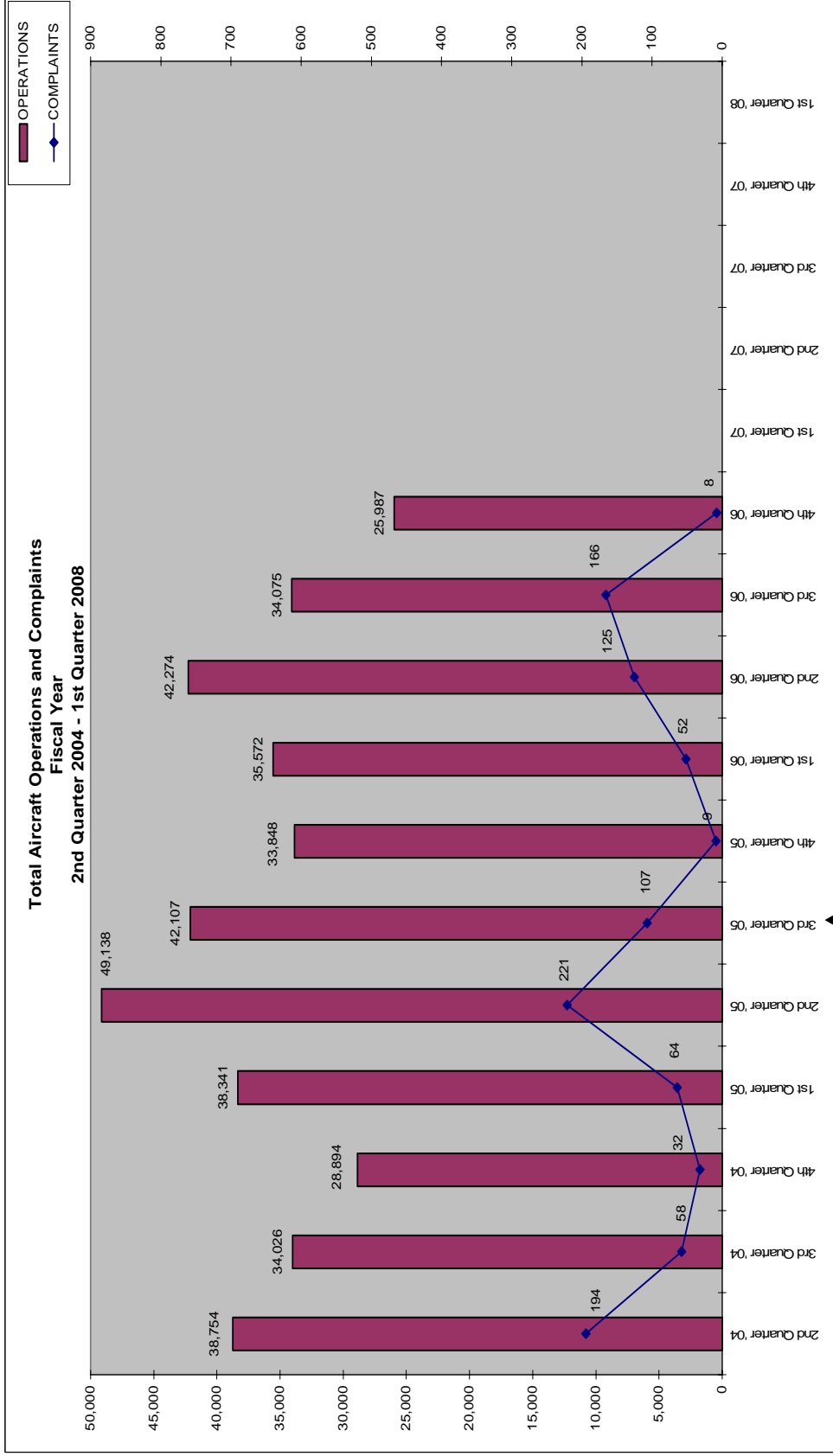
Nighttime Ban Stage 1 Jet Aircraft 10PM to 7AM begins May 1996

Part 150 Study Update Begins August 1999

Voluntary Nighttime Curfew Stage 1 & 2 Jet Aircraft May 1996

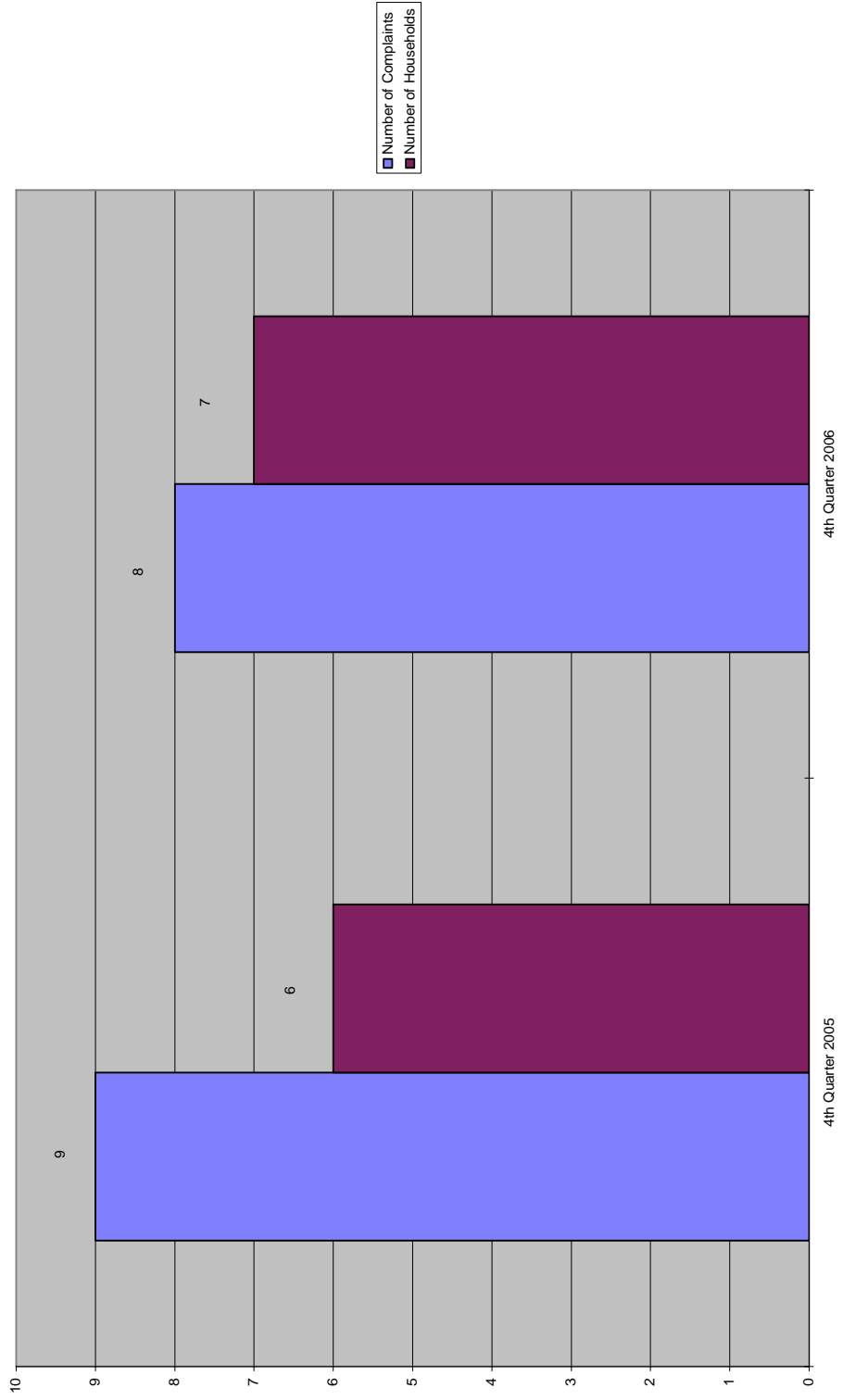


APPENDIX A - TABLE 2



Stage 2 Jet
Aircraft Ban Upheld in U.S.
Court of Appeals

Number of Complaints vs. Number of Households
4th QUARTER



NOISE COMPLAINTS & OPERATIONS SUMMARY

APPENDIX C

MONTH: July 2006

DATE	7 AM - 10 PM						10 PM - 7 AM								TOTAL OPERATIONS				
	JET+HELO+PROP			JET OPS			JET+HELO+PROP			JET OPS									
	EVENTS	COMPLAINTS	OPERATIONS	TOTAL STAGE 1 OPERATIONS	TOTAL STAGE 2 OPERATIONS	AA STAGE 1 (EXEMPT)	AA STAGE 2 (EXEMPT)	AA STAGE 3 OPERATIONS	EVENTS	COMPLAINTS	OPERATIONS	TOTAL STAGE 1 OPERATIONS	TOTAL STAGE 2 OPERATIONS	AA STAGE 1 (EXEMPT)		AA STAGE 2 (EXEMPT)	AA STAGE 3 OPERATIONS	STAGE 3 GA OPERATIONS	STAGE 3 AT OPERATIONS
Sat-01			251								4								255
Sun-02			185								3							1	188
Mon-03			260								2								262
Tue-04			188								3								191
Wed-05			279								6							1	285
Thu-06			305								6							1	311
Fri-07			206						1	1	7						1		213
Sat-08			182								6								188
Sun-09			235								7							1	242
Mon-10			278								7							1	285
Tue-11			184								4								188
Wed-12			322								3						2		325
Thu-13			317								7					1	1		324
Fri-14			409								7								416
Sat-15			378								3								381
Sun-16			298								5								303
Mon-17			264								6						1		270
Tue-18			254								11								265
Wed-19			272								9						2	1	281
Thu-20			233								3						2		236
Fri-21			295								6						1		301
Sat-22			114								7					1	1		121
Sun-23	1	1	348								4							1	352
Mon-24			419								8						1		427
Tue-25			384								5						1	1	389
Wed-26			413						2	2	13						3	1	426
Thu-27			305								8						2	1	313
Fri-28			298								9								307
Sat-29			334								6								340
Sun-30			329								9						2	1	338
Mon-31			317								6								323
TOTALS	1	1	8,856	0	0	0	0	8	3	3	190	0	0	0	0	0	20	13	9,046

COMPLAINTS	DAY	NIGHT	TOTAL
Events	1	3	4
Complaints	1	3	4
Operations (Ops)	8,856	190	9,046
%Events/Ops	0.0%	1.8%	0.0%
Complaints & Events	10	10	10
% Complaints/ Ops	0.0%	1.6%	0.0%

NIGHT OPERATIONS	
Air Ambulance (AA)	J 6
EMS	H 23
Sheriff's Office	H 2
Mosquito Control	H 5
Mosquito Control	P 19
Public Service	J,H,P 53
Non-Jet Air Carrier & GA	H,P 104
Total GA Jet Ops	J 20
Total AT Jet Ops	J 13
Total Jet Operations	J 33
Night Ops - Total	J,H,P 190

RESTRICTIONS	Violations	Letters
Mandatory Restriction (MR)		
Runups: Maintenance	0	0
Jet Stage 1 day & night Ops	0	0
Jet Stage 2 day & night Ops	0	0
Voluntary Restriction (VR)		
Jet Stage 3 night Ops	0	0

NOISE COMPLAINTS & OPERATIONS SUMMARY

APPENDIX C

MONTH: August 2006

DATE	7 AM - 10 PM								10 PM - 7 AM								TOTAL OPERATIONS		
	JET+HELO+PROP			JET OPS					JET+HELO+PROP			JET OPS							
	EVENTS	COMPLAINTS	OPERATIONS	TOTAL STAGE 1 OPERATIONS	TOTAL STAGE 2 OPERATIONS	AA STAGE 1 (EXEMPT)	AA STAGE 2 (EXEMPT)	AA STAGE 3 OPERATIONS	EVENTS	COMPLAINTS	OPERATIONS	TOTAL STAGE 1 OPERATIONS	TOTAL STAGE 2 OPERATIONS	AA STAGE 1 (EXEMPT)	AA STAGE 2 (EXEMPT)	AA STAGE 3 OPERATIONS		STAGE 3 GA OPERATIONS	STAGE 3 AT OPERATIONS
Tue-01			330							7								1	337
Wed-02			290							6								1	296
Thu-03			283							9						1			292
Fri-04			290							5								1	295
Sat-05			251					2		8								2	259
Sun-06			205							4									209
Mon-07			265							7							3		272
Tue-08			274					2		7							1		281
Wed-09			296							12							3	1	308
Thu-10			353					2		11							1		364
Fri-11			309							10							1	2	319
Sat-12			311							5								1	316
Sun-13			319							1									320
Mon-14			268							5							3	1	273
Tue-15			374							4									378
Wed-16			327							9							1	1	336
Thu-17			329							9							1		338
Fri-18			311							5									316
Sat-19			222							3									225
Sun-20			262							6							3		268
Mon-21			283							5							1		288
Tue-22	1	1	329							11							2	1	340
Wed-23	1	1	327							8								2	335
Thu-24			275					2		10							1	1	285
Fri-25			275							6							1	1	281
Sat-26			259							4							1		263
Sun-27			282							4							1	1	286
Mon-28			273							2								1	275
Tue-29			144							5									149
Wed-30			26							1								1	27
Thu-31			301							6							2	1	307
TOTALS	2	2	8,643	0	0	0	0	8	0	0	195	0	0	0	0	1	26	20	8,838

COMPLAINTS			
	DAY	NIGHT	TOTAL
Events	2	0	2
Complaints	2	0	2
Operations (Ops)	8,643	195	8,838
%Events/Ops	0.0%	0.0%	0.0%
Complaints & Events	10	0.0	10
% Complaints/Ops	0.0%	0.0%	0.0%

NIGHT OPERATIONS	
Air Ambulance (AA)	J 1
EMS	H 2
Sheriff's Office	H 33
Mosquito Control	H 2
Mosquito Control	P 10
Public Service	J,H,P 48
Non-Jet Air Carrier & GA	H,P 101
Total GA Jet Ops	J 26
Total AT Jet Ops	J 20
Total Jet Operations	J 47
Night Ops - Total	J,H,P 195

RESTRICTIONS		Violations	Letters
Mandatory Restriction (MR)			
Runups: Maintenance		0	0
Jet Stage 1 day & night Ops		0	0
Jet Stage 2 day & night Ops		0	0
Voluntary Restriction (VR)			
Jet Stage 3 night Ops		0	0

NOISE COMPLAINTS & OPERATIONS SUMMARY

APPENDIX C

MONTH: September 2006

DATE	7 AM - 10 PM								10 PM - 7 AM								TOTAL OPERATIONS		
	JET+HELO+PROP			JET OPS					JET+HELO+PROP			JET OPS							
	EVENTS	COMPLAINTS	OPERATIONS	TOTAL STAGE 1 OPERATIONS	TOTAL STAGE 2 OPERATIONS	AA STAGE 1 (EXEMPT)	AA STAGE 2 (EXEMPT)	AA STAGE 3 OPERATIONS	EVENTS	COMPLAINTS	OPERATIONS	TOTAL STAGE 1 OPERATIONS	TOTAL STAGE 2 OPERATIONS	AA STAGE 1 (EXEMPT)	AA STAGE 2 (EXEMPT)	AA STAGE 3 OPERATIONS		STAGE 3 GA OPERATIONS	STAGE 3 AT OPERATIONS
Fri-01			195								5						1		200
Sat-02			171								10						2		181
Sun-03			166								4						1		170
Mon-04			230								6						3		236
Tues-05			219								9						2		228
Wed-06			314								6							1	320
Thur-07			312								13							1	325
Fri-08			266								15							1	281
Sat-09			236								18						1	1	254
Sun-10			171								4							1	175
Mon-11			250					2			12					2	2	2	262
Tues-12			216								8					2	2	2	224
Wed-13			229								8						2	2	237
Thur-14			283								7					1	2	2	290
Fri-15			221					2			17					1	1	1	238
Sat-16			260								9						1	1	269
Sun-17			215								4					1			219
Mon-18			195								5						2	2	200
Tues-19			248						1	1	12					1	2	2	260
Wed-20			335								13						1	1	348
Thurs-21			354								6						1	1	360
Fri-22			296								10					1	2	2	306
Sat-23	1	1	294								5						1	1	299
Sun-24			268								5					2			273
Mon-25			325								7					2	2	2	332
Tues-26			251								8						1	1	259
Wed-27			300								10				2		1	1	310
Thurs-28			358								12					1	1	1	370
Fri-29			337								7						1	1	344
Sat-30			326								7					2	1	1	333
TOTALS	1	1	7,841	0	0	0	2	2	1	1	262	0	0	0	0	2	26	31	8,103

COMPLAINTS			
	DAY	NIGHT	TOTAL
Events	1	1	2
Complaints	1	1	2
Operations (Ops)	7,841	262	8,103
%Events/Ops	0.0%	0.4%	0.0%
Complaints & Events	10	10	10
% Complaints/Ops	0.0%	0.4%	0.0%

NIGHT OPERATIONS	
Air Ambulance (AA)	J 2
EMS	H 2
Sheriff's Office	H 54
Mosquito Control	H 4
Mosquito Control	P 34
Public Service	J,H,P 96
Non-Jet Air Carrier & GA	H,P 109
Total GA Jet Ops	J 26
Total AT Jet Ops	J 31
Total Jet Operations	J 59
Night Ops - Total	J,H,P 262

RESTRICTIONS		Violations	Letters
Mandatory Restriction (MR)			
Runups: Maintenance		0	0
Jet Stage 1 day & night Ops		0	0
Jet Stage 2 day & night Ops		0	0
Voluntary Restriction (VR)			
Jet Stage 3 night Ops		0	0