



**CITY OF NAPLES AIRPORT AUTHORITY**

**QUARTERLY NOISE REPORT**

NUMBER 40

For the period

October 1, 2006 through December 31, 2006

Prepared by  
Airport Operations

## TABLE OF CONTENTS

	Page
<b>INTRODUCTION</b>	1
<b>PART I AIRCRAFT OPERATIONS</b>	1
Table I	Airport Traffic Summary 2
Figure IA	Total Monthly Operations 3
Figure IB	Total Night Operations by Month 4
Table II	Quarterly Air Traffic Nighttime Operations Summary 5
Figure IC	Fiscal year Air Traffic Nighttime Operations 5
Table IIA	Fiscal Year Percentage of Nighttime Operations 6
<b>PART II CITIZEN COMPLAINTS</b>	7
Table III	Airport Noise Complaint Summary 8
Figure IIA	Noise Complaints by Geographical Area 9
<b>PART III COMPLAINTS BY TIMEFRAME</b>	10
Figure IIIA	Noise Complaints by Hour 10
Figure IIIB	Noise Complaints by Month 10
<b>PART IV COMPLAINTS BY OPERATIONAL SOURCE</b>	11
Figure IVA	Complaints by Type Aircraft 11
Figure IVB	Air Ambulance Operations & Complaints 11
<b>PART V COMPLAINTS BY OPERATION</b>	12
Figure V	Complaints by Operations 12
<b>SUMMARY</b>	13
Appendix A	Total Aircraft Operations and Complaints
Appendix B	Noise Complaints vs. Number of Households
Appendix C	Noise Complaint / Operations Summary (Oct./Nov./Dec.)

**PART I  
AIRCRAFT OPERATIONS**

**INTRODUCTION**

This is the fortieth Quarterly Noise Report prepared by the City of Naples Airport Authority - Airport Operations Department. This report is informational in nature. The data included in this report tracks aircraft operations and noise complaints. The information contained in this report is fiscal year (Oct. – Sept.). All percentages are rounded to the nearest percent.

**AIRCRAFT OPERATIONS**

Table I, page 2, Airport Traffic Summary, contains aircraft movement data from FAA Form 7230-1 and after hour statistics recorded by the City of Naples Airport Authority Security Officers. Naples Air Traffic Control Tower is operational from 6:00 AM through 10:00 PM. A single movement represents either one arrival or one departure by the indicated aircraft category.

**This Quarter Compared to Previous Quarter**

Compared to the previous quarter, air carrier traffic has increased by 105%, general aviation activity has increased by 30% and total traffic increased by 34%, from 25,987 operations to 34,775. The daily average for the First Quarter was 379 operations.

**This Quarter Compared to the Same Period One Year Ago**

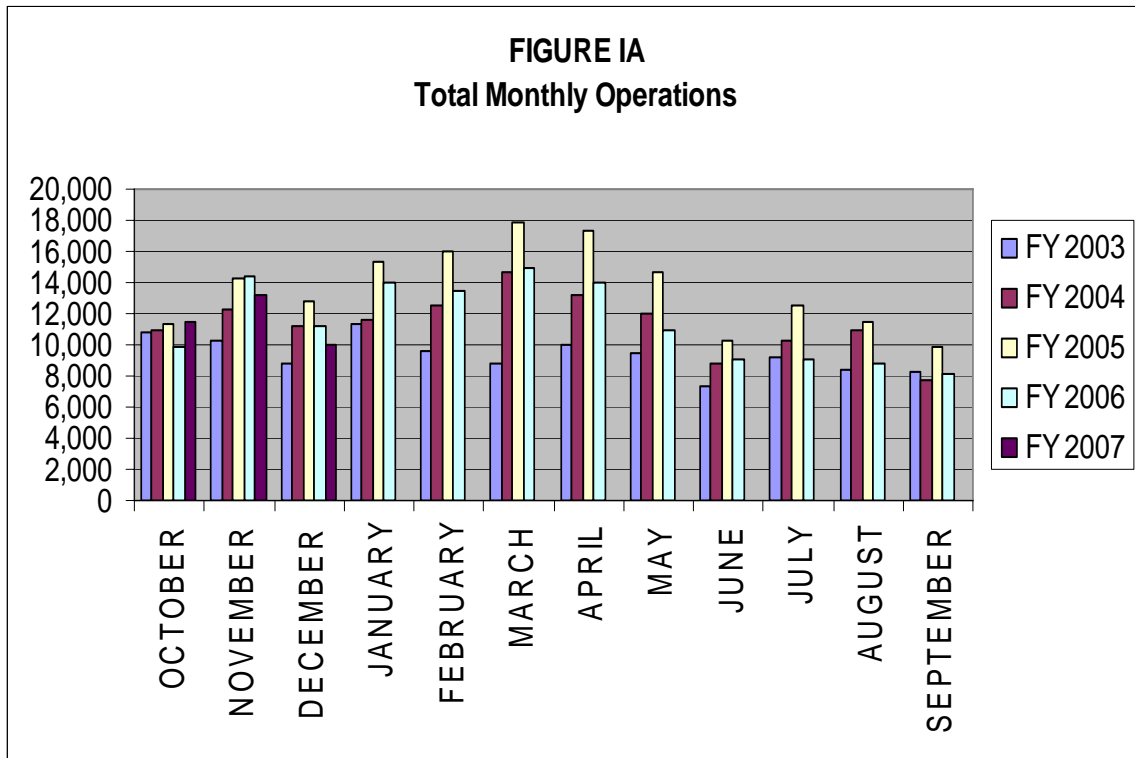
Compared to the same period last year, air carrier traffic has decreased by 9% and general aviation air traffic has decreased 1%. Total air traffic operations decreased by 2% from 35,572 operations to 34,775.

**Table I**

**AIRPORT TRAFFIC SUMMARY  
Landings and Takeoffs  
Fiscal Years 2006-2007**

YEAR	AIR CARRIER	GENERAL AVIATION	MILITARY	TOTAL TRAFFIC	DAILY AVERAGE
<b>2006</b>					
<b>OCTOBER</b>	801	9,094	30	9,925	320
<b>NOVEMBER</b>	1,254	13,188	3	14,445	482
<b>DECEMBER</b>	1,178	10,018	6	11,202	361
<b>TOTALS FOR 1st QUARTER</b>	3,233	32,300	39	35,572	388
<b>JANUARY</b>	1,535	12,412	16	13,963	450
<b>FEBRUARY</b>	1,656	11,758	13	13,427	480
<b>MARCH</b>	1,652	13,230	2	14,884	480
<b>TOTALS FOR 2nd QUARTER</b>	4,843	37,400	31	42,274	470
<b>APRIL</b>	1,352	12,685	4	14,041	468
<b>MAY</b>	894	10,020	-	10,914	352
<b>JUNE</b>	613	8,507	-	9,120	304
<b>TOTALS FOR 3rd QUARTER</b>	2,859	31,212	4	34,075	375
<b>JULY</b>	467	8,551	28	9,046	292
<b>AUGUST</b>	492	8,338	8	8,838	285
<b>SEPTEMBER</b>	477	7,622	4	8,103	270
<b>TOTALS FOR 4th QUARTER</b>	1,436	24,511	40	25,987	282
<b>TOTALS FOR FY06</b>	12,371	125,423	114	137,908	379
<b>2007</b>					
<b>OCTOBER</b>	702	10,786	6	11,494	371
<b>NOVEMBER</b>	1,166	12,070	9	13,245	442
<b>DECEMBER</b>	1,070	8,960	6	10,036	324
<b>TOTALS FOR 1st QUARTER</b>	2,938	31,816	21	34,775	379

Figure IA below illustrates the airport's month-by-month total operational levels for fiscal years 2003, 2004, 2005, 2006 and 2007.



There was a 1% decrease in overall airport operations during the First Quarter of 2007, when compared to the same period in 2006.

### Night Time Operations

Figure IB, below, illustrates the airport's total nighttime (10:00 PM – 7:00 AM) operational levels for fiscal year 2003, 2004, 2005, 2006 and 2007.

Total nighttime operations have decreased by twelve percent (12%) in the First Quarter of 2007 when compared to the First Quarter 2006 statistics. Jet operations occurring at night decreased by 76 operations and single and multi-engine aircraft operations increased by 16.

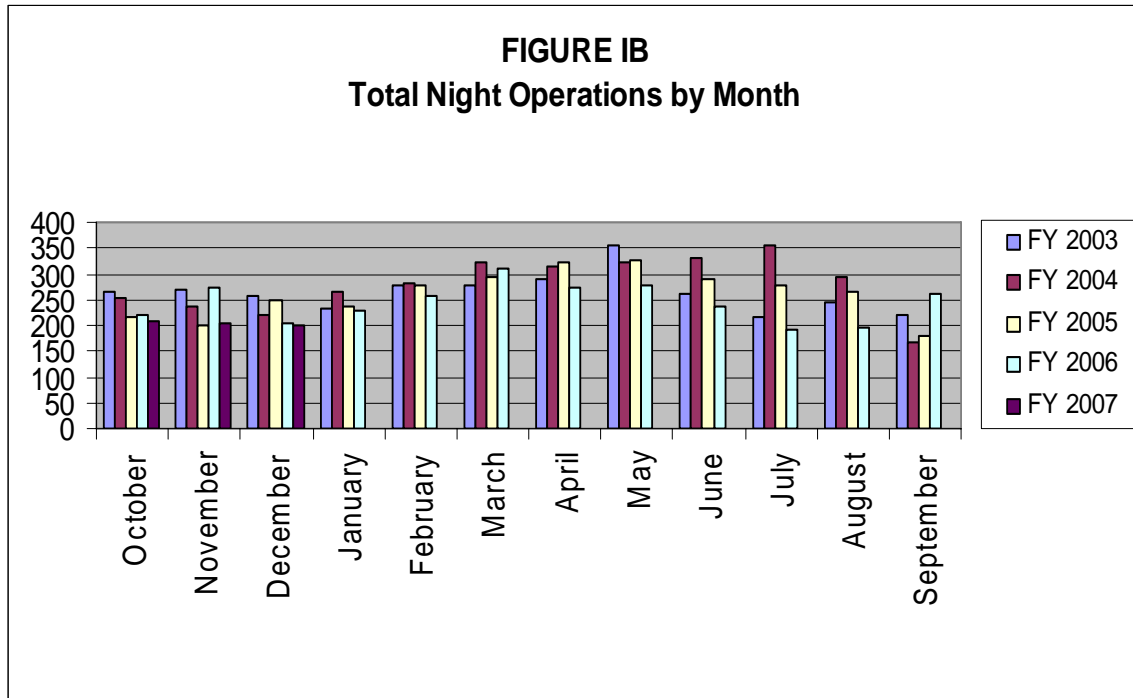


Table II, below, summarizes the types of nighttime operations occurring at the airport during the previous five quarters. Nighttime operations include voluntary curfew hours (10:00 PM through 7:00 AM). Reported nighttime operations have decreased by 12% when compared to the same time last year.

As compared to the same time last year, the number of air ambulance operations has decreased by 38%. Single and Multi-engine aircraft operations have increased by 7%. Public Service operations represent 21% of the activity occurring at night. Nighttime operations accounted for two percent (2%) of the overall operations for the First Quarter of 2007.

**Table II**  
**Quarterly Air Traffic Nighttime Operations Summary – by Fiscal Year**

Activity	1 <sup>st</sup> 2006	2 <sup>nd</sup> 2006	3 <sup>rd</sup> 2006	4 <sup>th</sup> 2006	1 <sup>st</sup> 2007
<b>Jets</b>					
Air Ambulance	8	8	2	3	5
Air Carrier	98	105	85	64	76
GA	204	296	181	72	153
<b>Subtotal Jets</b>	<b>310</b>	<b>409</b>	<b>268</b>	<b>139</b>	<b>234</b>
<b>Single &amp; Multi-engine (includes air carrier &amp; GA)</b>	<b>233</b>	<b>279</b>	<b>345</b>	<b>314</b>	<b>249</b>
<b>Public Service</b>					
Mosquito Control Operations	14	0	22	74	10
Collier Sheriff's Office	107	95	121	110	109
EMS	35	13	35	10	12
Coast Guard	0	2	0	0	0
<b>Subtotal Public Service</b>	<b>156</b>	<b>110</b>	<b>178</b>	<b>194</b>	<b>131</b>
<b>Total</b>	<b>699</b>	<b>798</b>	<b>791</b>	<b>647</b>	<b>614</b>

Figure IC, below, illustrates the airport's total nighttime (10:00 PM – 7:00 AM) operational levels for fiscal years 2001 through 2006.

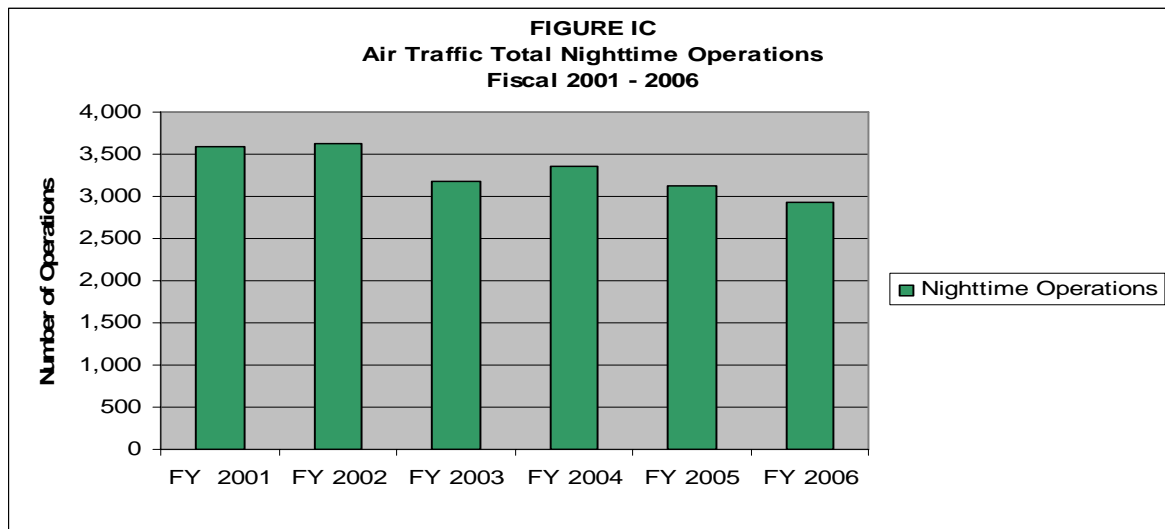


Table II A, depicts the percentage of nighttime operations as compared to total operations for the last five fiscal years. Night operations represent three percent (3%) for FY 02 – 03 and two percent (2%) of the total operations for FY 04, FY 05 and FY 06. This is a one percent (1%) decrease when compared to FY 02 – 03.

Table II A  
Fiscal Year Percentage of Nighttime Operations

<b>Fiscal Year</b>	<b>Total Operations</b>	<b>Night Operations</b>	<b>% of Night Ops</b>	<b>% of Jet Night Ops</b>
2002	138,790	3,626	3%	21%
2003	112,308	3,170	3%	23%
2004	136,128	3,361	2%	23%
2005	163,434	3,130	2%	34%*
2006	137,908	2,935	2%	38%*

\* Delta began CRJ service in FY05. They had 328 nighttime operations in FY 05 and 352 nighttime operations in FY 06. Without Delta's operations, the percentage of jet night operations in FY05 would have been twenty-four percent (24%) of the total nighttime operations and twenty-six percent (26%) of the total in FY 06.



## **PART II CITIZEN COMPLAINTS**

Table III, on page 8, is a summary of citizen noise complaints separated according to four geographical areas (Quadrants). Below is a sample representation of the neighborhoods in each Quadrant. Every neighborhood in the area is not included in this list, although it is included in the Quadrant total.

**Northeast Quadrant** - Briarwood, Coconut River Estates, Golden Gate, Grey Oaks, Hawks Ridge, Wyndemere, and surrounding northeast areas.

**Northwest Quadrant** - Bears Paw, Coconut River Estates, Coquina Sands, Country Club of Naples, Lake Forest, Lake Park, Park Shore, Ridge Lakes, River Estates, River Reach, Sun Terrace, Moorings, Wilderness, and surrounding northwest areas.

**Southwest Quadrant** - Aqualane Shores, Old Naples, Port Royal, Royal Harbor, and surrounding southwest neighborhoods.

**Southeast Quadrant** - Brookside, Coconut Grove, Flamingo Estates, Foxfire, Kings Lake, Lakewood, Naples Gardens, Rock Creek Campground, The Glades, and surrounding neighborhoods.

The analysis will include the specific nature of the complaint, whether it was an arriving or departing aircraft or an overflight. Complaints relative to nighttime Mosquito Control operations, Air Ambulance Flights, Sheriff's Office and EMS helicopter operations are included in this report.

### **This Quarter Compared to Previous Quarter**

This quarter's noise complaints, compared to the previous quarter, have increased from 8 to 260. Complaints received from neighborhoods to the northeast of the airport have increased by 203, from the northwest they have increased by 2, from the southeast they have increased by 11, from the southwest increased by 34 and unknown increased by 2.

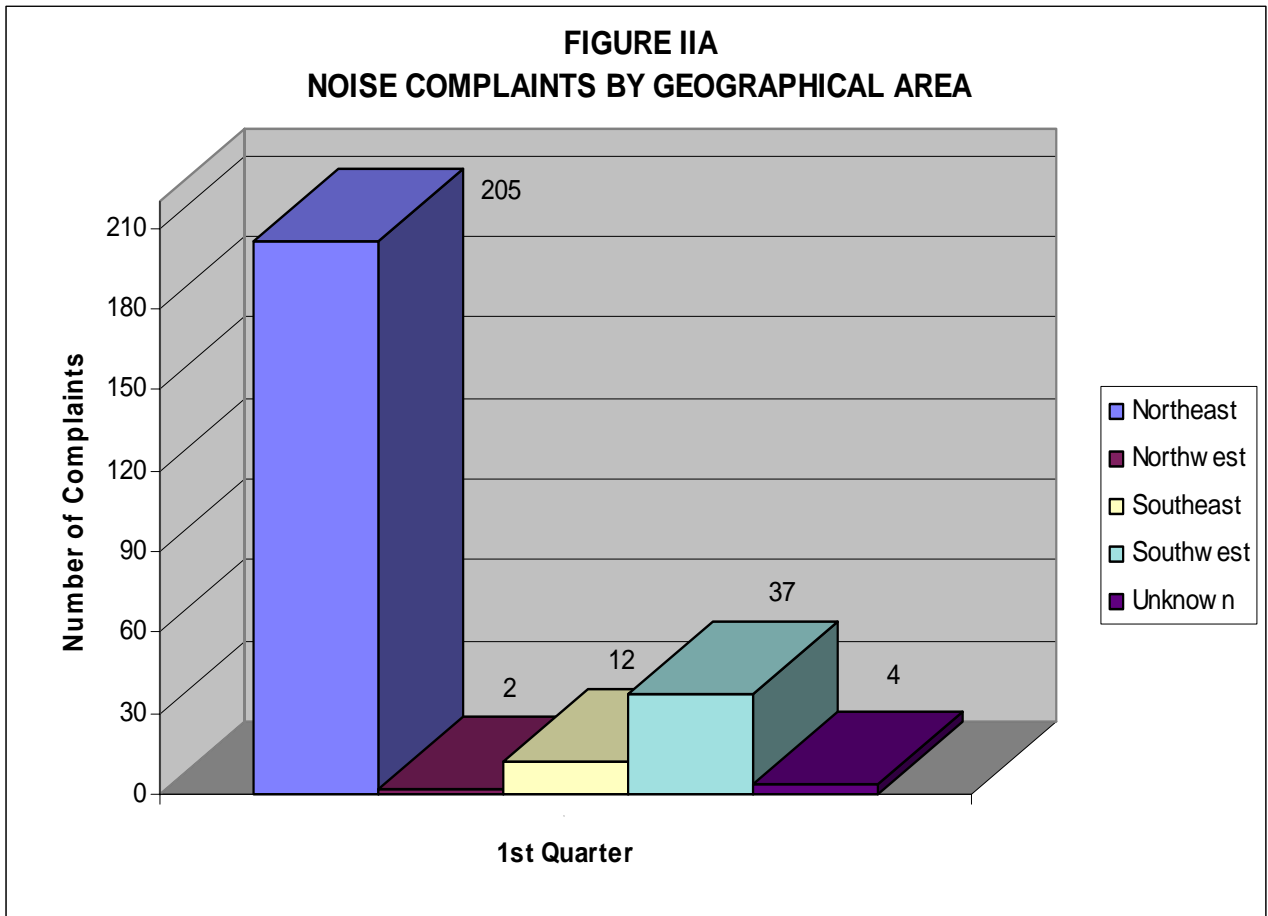
### **This Quarter Compared to the Same Period One Year Ago**

Compared to the same period last year, the total number of complaints increased by 208 calls. Complaints received from neighborhoods to the northeast of the airport have increased by 198, from the northwest they have decreased by 5, from the southeast increased by 4, from the southwest increased by 8 and unknown increased by 3. Total complaints received have increased from 52 to 260.

**Table III**  
**AIRPORT NOISE COMPLAINT SUMMARY**  
 Fiscal Years 2006-2007

YEAR	Northeast	Northwest	Southeast	Southwest	Unknown Location	Monthly Total
<b>2006</b>						
OCTOBER	-	-	-	2	-	2
NOVEMBER	5	5	7	9	1	27
DECEMBER	2	2	1	18	-	23
TOTALS FOR 1st QUARTER	7	7	8	29	1	52
JANUARY	2	9	6	12	-	29
FEBRUARY	4	-	-	50	-	54
MARCH	4	2	2	34	-	42
TOTALS FOR 2nd QUARTER	10	11	8	96	-	125
APRIL	12	1	3	116		132
MAY	14	1	-	15	1	31
JUNE	1			2		3
TOTALS FOR 3rd QUARTER	27	2	3	133	1	166
JULY			1	2	1	4
AUGUST	1			1		2
SEPTEMBER	1				1	2
TOTALS FOR 4th QUARTER	2	-	1	3	2	8
TOTALS FOR FY06	46	20	20	261	4	351
<b>2007</b>						
OCTOBER	9	-	-	11	2	22
NOVEMBER	120	2	7	18	-	147
DECEMBER	76	-	5	8	2	91
TOTALS FOR 1st QUARTER	205	2	12	37	4	260

Figure IIA, below, graphically compares the noise complaints received by geographical areas based on data collected during the First Quarter of 2007. Total complaints for this quarter have increased by two hundred and eight (208) when compared to the same period one year ago.



### PART III COMPLAINTS BY TIMEFRAME

Figure IIIA, below, depicts noise complaints for the First Quarter according to the time of the single event. Most complaints were received about operations occurring between 1:00 PM and 5:00 PM (40%). Fifteen percent (15%) of the total complaints were received during the voluntary curfew hours.

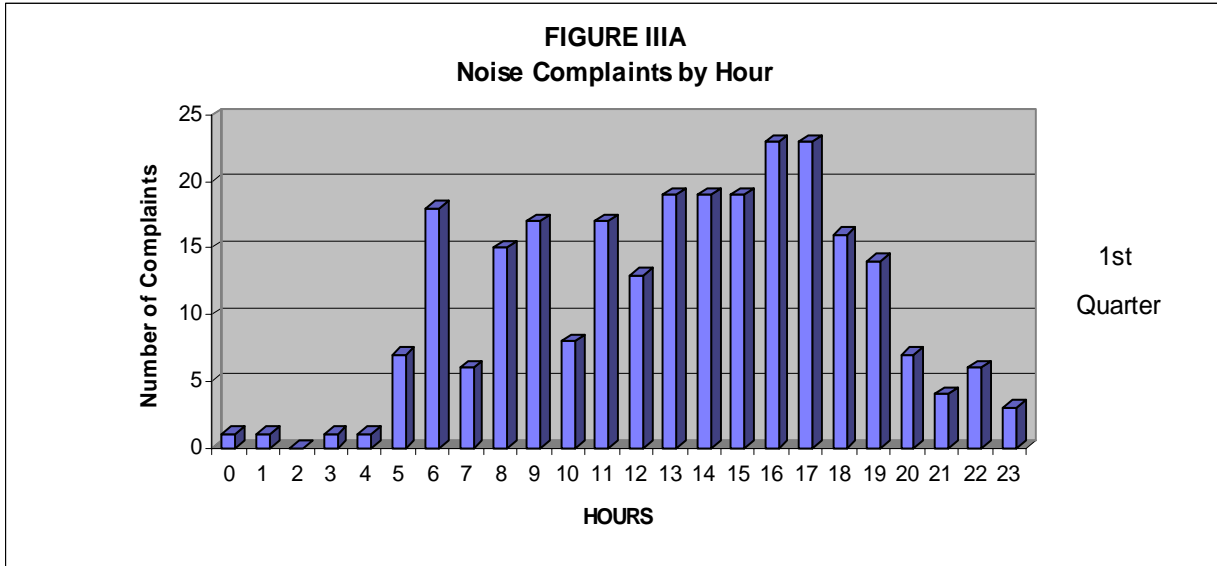
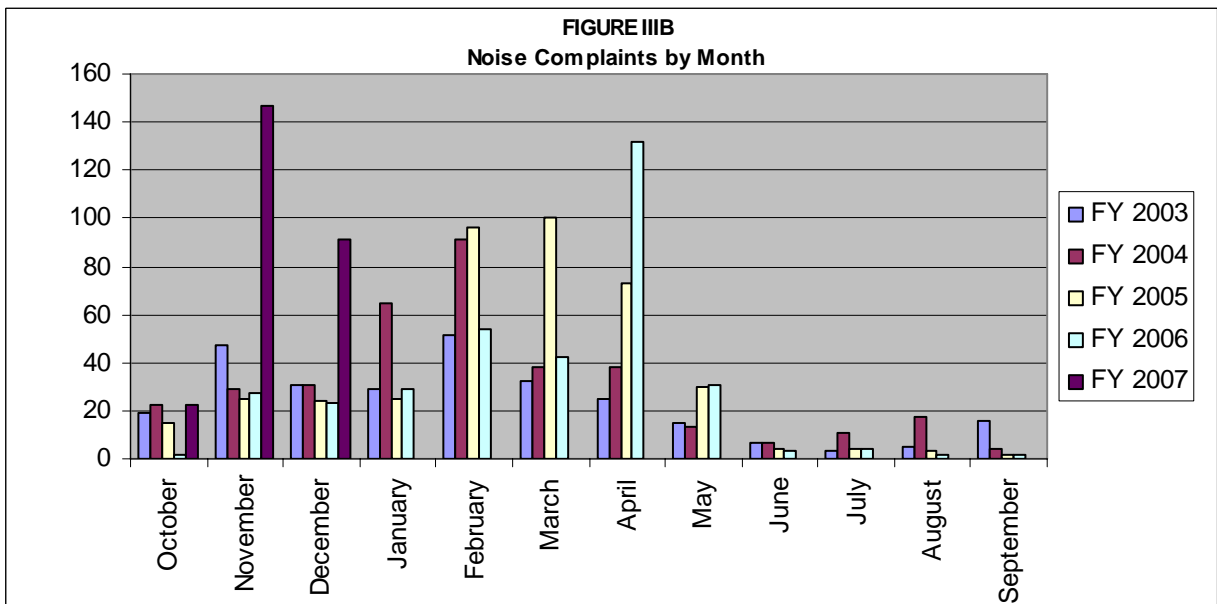


Figure IIIB below, illustrates the airport's complaint volume for fiscal years 2003, 2004, 2005, 2006 and 2007.



## PART IV COMPLAINTS BY OPERATIONAL SOURCE

Figure IVA below, indicates what types of aircraft the complainants were calling about. Two hundred and fourteen (214) of the complaints were about Stage 3 jet aircraft operations and one (1) complaint was in reference to Stage 2 air ambulance operations.

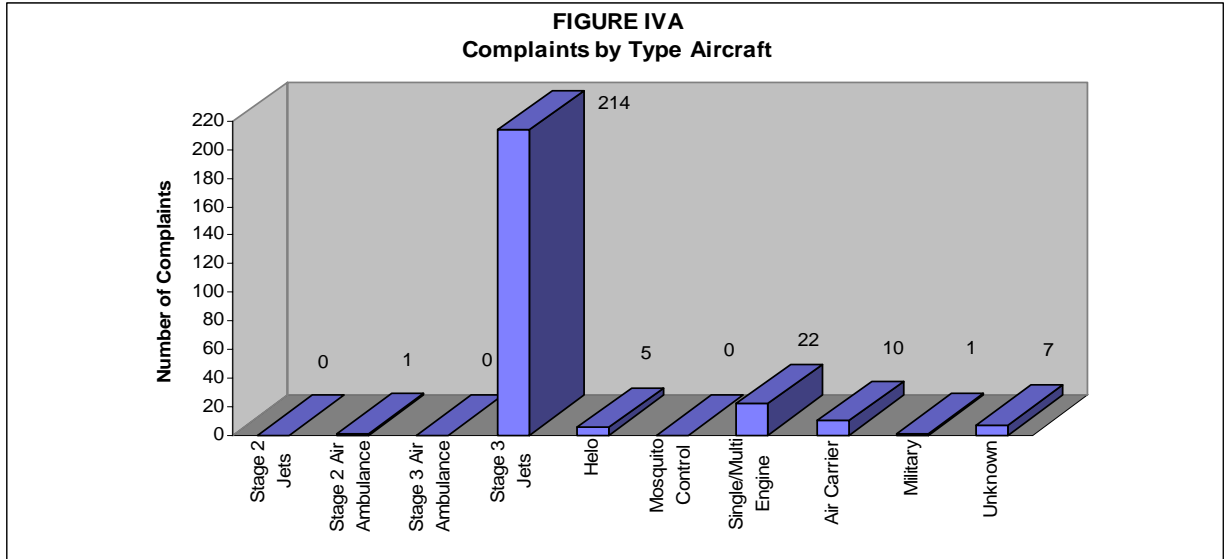
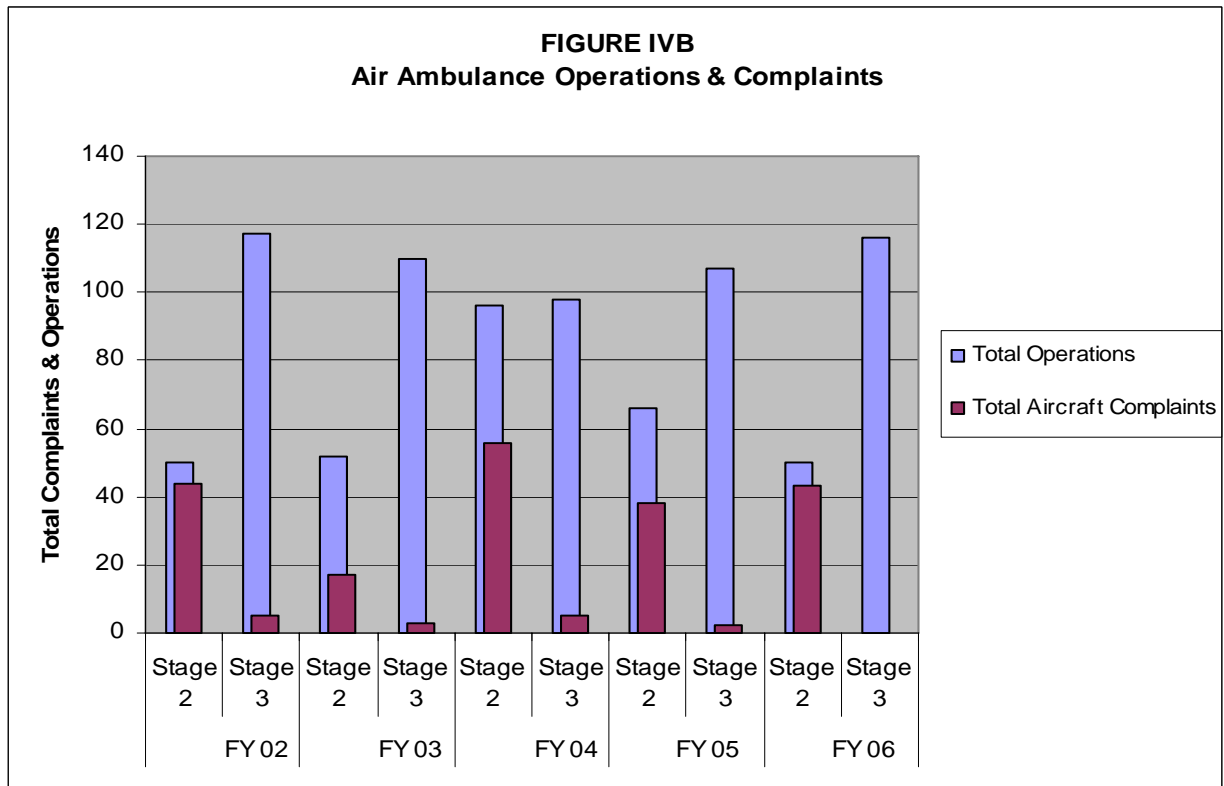
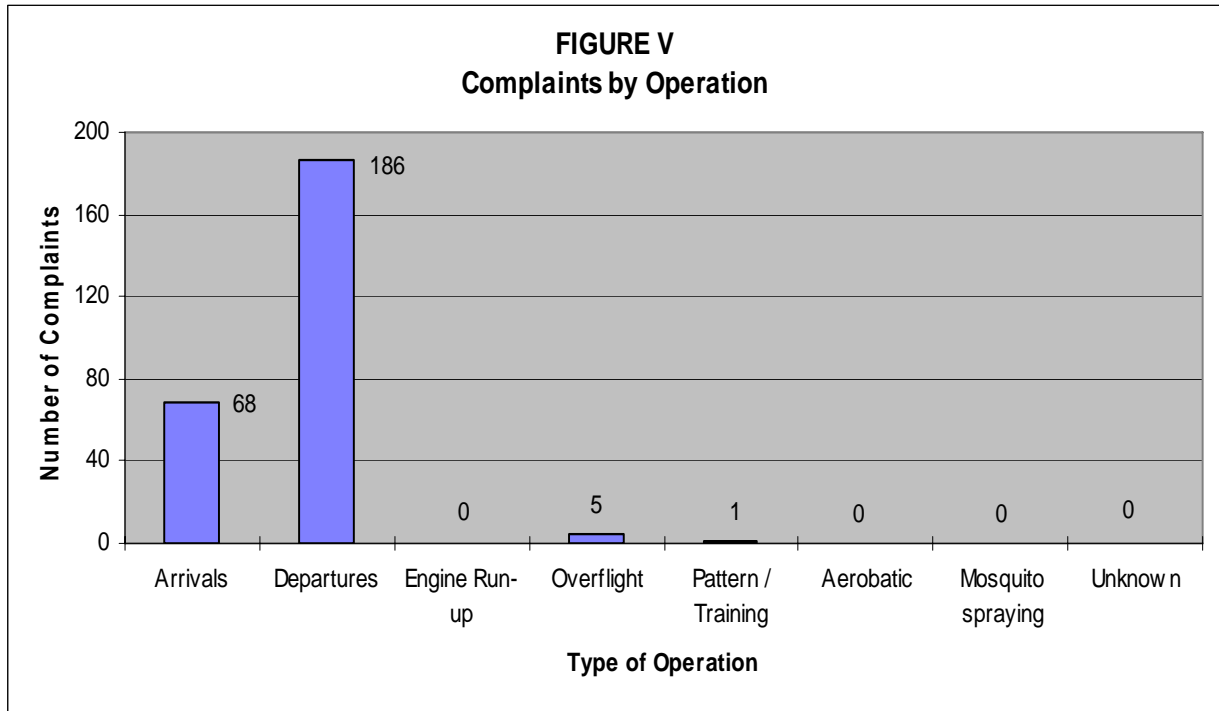


Figure IVB, below, depicts operations and noise complaints received from Stage 2 and Stage 3 Air Ambulances during FY 2002, 2003, 2004, 2005 and 2006.



**PART V  
COMPLAINTS BY OPERATION**

Figure V, below, shows the operational source of the noise complaints from the First Quarter of 2007.



## SUMMARY

### **Air Traffic**

Compared to the previous quarter, air carrier traffic has increased 105%, general aviation traffic has increased by 30%, and total air traffic has increased by 34%. Compared to the same period one year ago, air carrier traffic decreased 9%, general aviation operations have decreased by 1%, and total traffic has decreased 2%.

Twenty-one percent (21%) of the total nighttime operations were attributed to Emergency Services helicopters and air ambulance jet aircraft and twelve percent (12%) of the operations were attributed to air carrier service. Jet aircraft operations at night have decreased by seventy-six (76) operations when compared to same period last year. Single and multi-engine aircraft operations have increased by sixteen (16) operations and Mosquito Control operations have decreased by four (4) operations. Overall nighttime operations have decreased by eighty-five (85) operations when compared to last year.

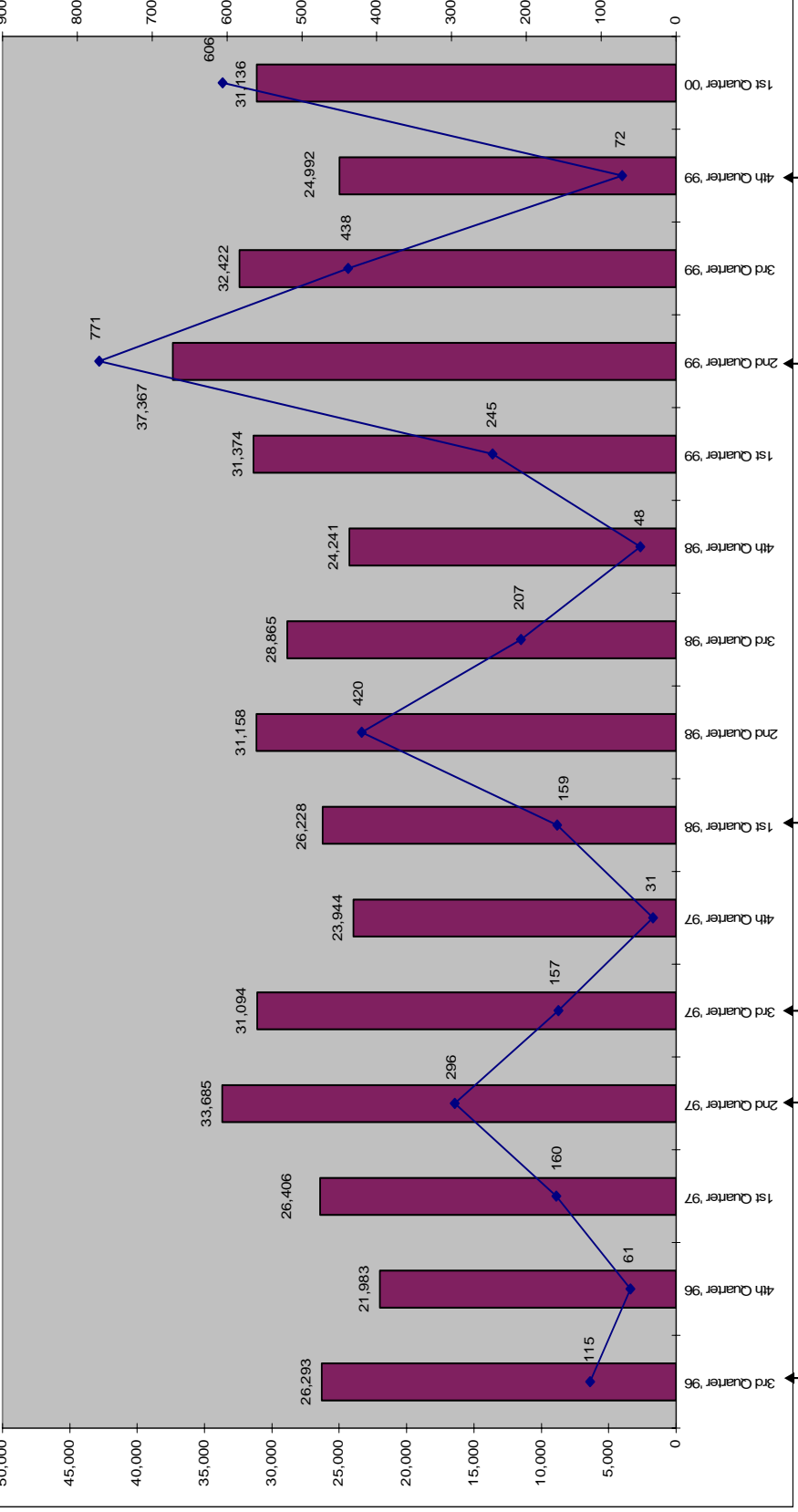
### **Noise Complaints**

Compared to the previous quarter, noise complaints have increased from 8 to 260. Northeast Quadrant neighborhoods generated the most complaints during the Fiscal First Quarter of 2007, with a total of 205 complaints. Other areas generated the following number of complaints: Northwest-2, Southwest-37, Southeast-12 and Unknown locations-4.

### **Noise Complaints by Family**

Eighty-seven (87) different families made 260 complaints to the Noise Abatement Office during the First Quarter of 2007. Nine families made 120 calls, or 46% of the total complaints. Eight families were located to the northeast of the airport and one family was located to the southwest of the airport.

**Total Aircraft Operations and Complaints**  
**Fiscal Year**  
**3rd Quarter 1996 - 1st Quarter 2000**



Long-Term Noise Monitoring Program Begins July 1999

24 hour Stage 1 Jet Aircraft Ban begins March 1999

Noise Compatibility Committee recommends total ban on Stage 1 jet aircraft

Jet Aircraft Noise Abatement Brochure Developed

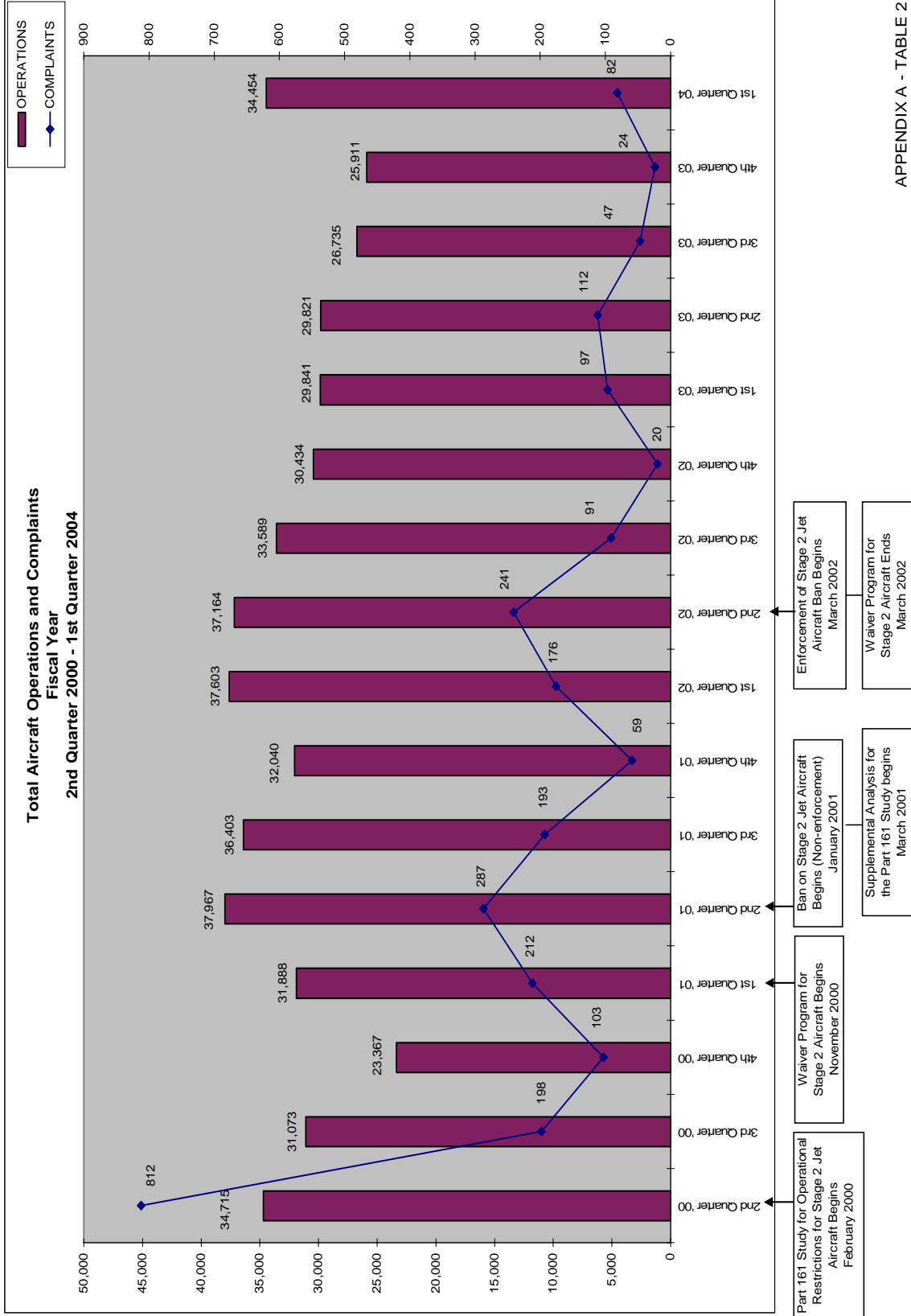
Noise Compatibility Committee Formed January 1997

Nighttime Ban Stage 1 Jet Aircraft 10PM to 7AM begins May 1996

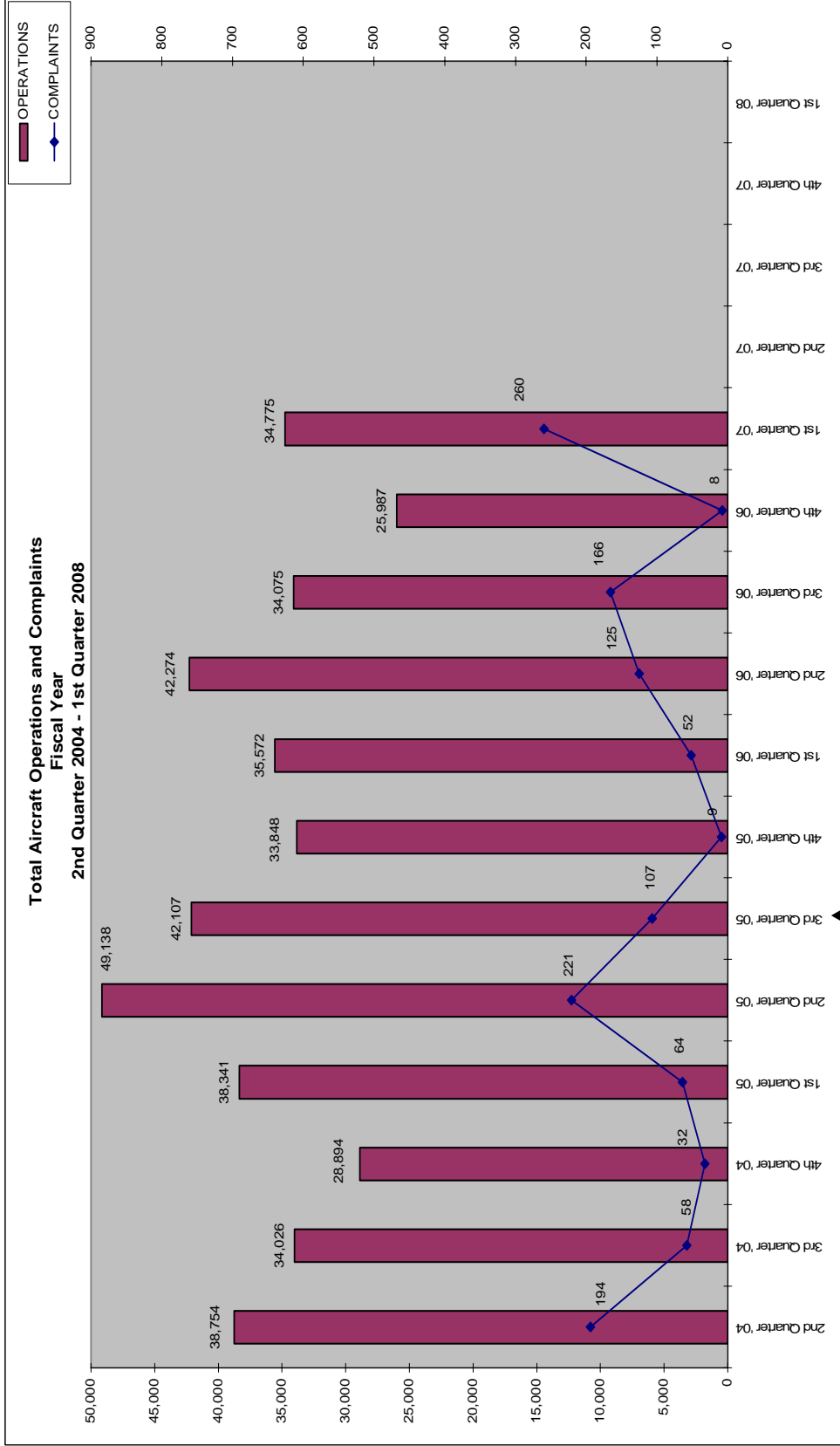
Part 150 Study Update Begins August 1999

Voluntary Nighttime Curfew Stage 1 & 2 Jet Aircraft May 1996



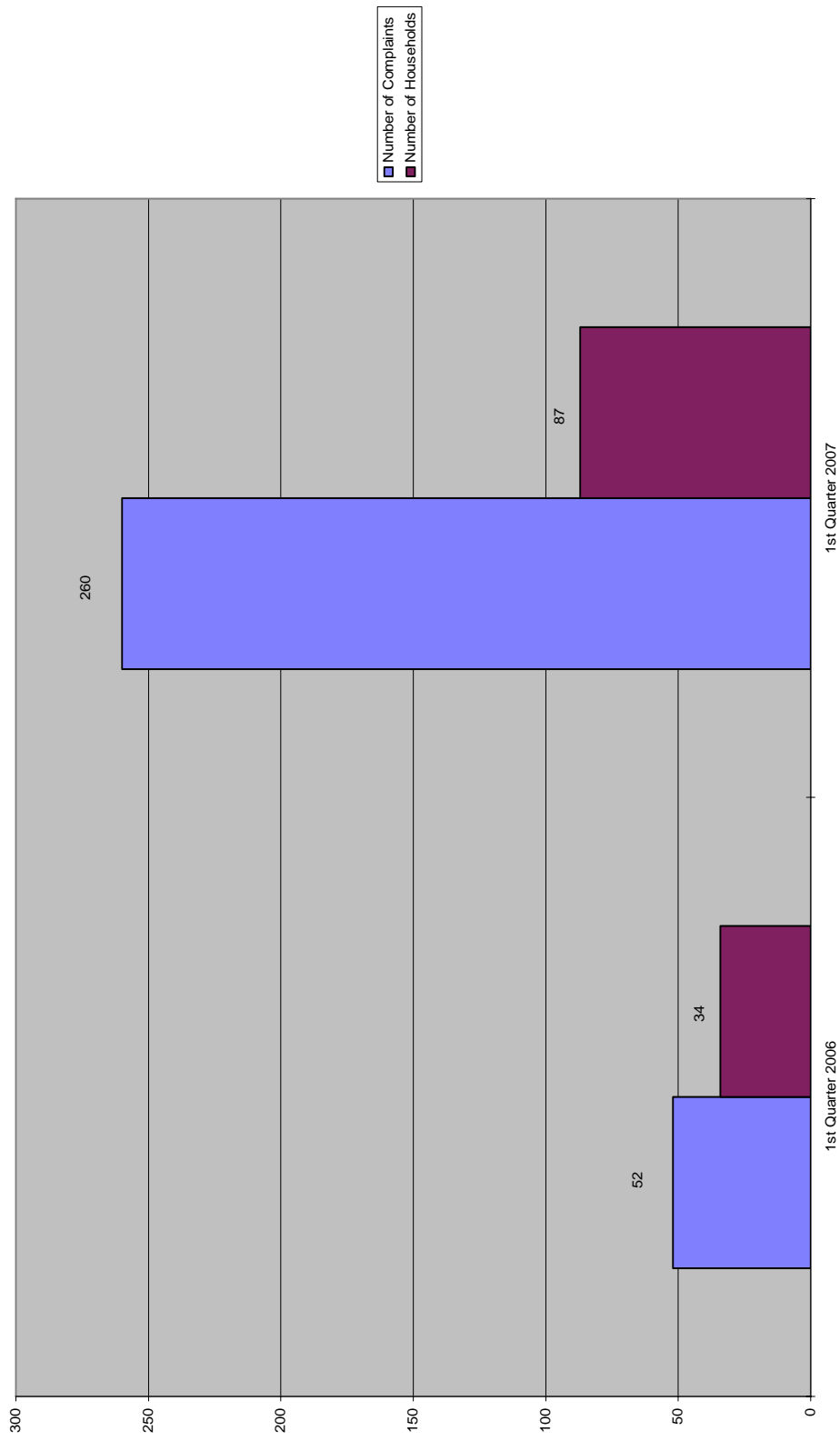


APPENDIX A - TABLE 2



Stage 2 Jet  
Aircraft Ban Upheld in U.S.  
Court of Appeals

Number of Complaints vs. Number of Households  
1st QUARTER



# NOISE COMPLAINTS & OPERATIONS SUMMARY

APPENDIX C

MONTH: October 2006

DATE	7 AM - 10 PM								10 PM - 7 AM								TOTAL OPERATIONS		
	JET+HELO+PROP			JET OPS					JET+HELO+PROP			JET OPS							
	EVENTS	COMPLAINTS	OPERATIONS	TOTAL STAGE 1 OPERATIONS	TOTAL STAGE 2 OPERATIONS	AA STAGE 1 (EXEMPT)	AA STAGE 2 (EXEMPT)	AA STAGE 3 OPERATIONS	EVENTS	COMPLAINTS	OPERATIONS	TOTAL STAGE 1 OPERATIONS	TOTAL STAGE 2 OPERATIONS	AA STAGE 1 (EXEMPT)	AA STAGE 2 (EXEMPT)	AA STAGE 3 OPERATIONS		STAGE 3 GA OPERATIONS	STAGE 3 AT OPERATIONS
Sun-01			226								3								229
Mon-02			296								5						2		301
Tue-03			367						1	1	10							2	377
Wed-04			339								6								345
Thu-05			313								10					3	1		323
Fri-06			426								10						1		436
Sat-07			249								6						1		255
Sun-08	1	1	286								2								288
Mon-09			315								4					1	1		319
Tue-10			374								8					2	1		382
Wed-11			394								8					3	1		402
Thu-12	1	1	351								10					3	2		361
Fri-13			370								9						1		379
Sat-14			374						1	1	5				1	1	1		379
Sun-15			423								11					1			434
Mon-16			463					2			8				3	2			471
Tue-17	1	1	443								4						1		447
Wed-18	2	2	463				2				9				3	1			472
Thu-19	2	2	471								7				3	1			478
Fri-20			336								6					1	1		342
Sat-21			337								6					1	1		343
Sun-22	2	3	423								5						1		428
Mon-23	1	1	283								5					1	2		288
Tue-24	2	2	304								11					1	2		315
Wed-25			422						1	1	6					1	1		428
Thu-26			563								7					2			570
Fri-27	2	2	394								6						2		400
Sat-28			201								3						1		204
Sun-29	1	1	348						1	1	4								352
Mon-30	1	1	346								7					2	1		353
Tue-31	1	1	387								6						2		393
<b>TOTALS</b>	<b>17</b>	<b>18</b>	<b>11,287</b>	<b>0</b>	<b>0</b>	<b>0</b>	<b>2</b>	<b>2</b>	<b>4</b>	<b>4</b>	<b>207</b>	<b>0</b>	<b>0</b>	<b>0</b>	<b>1</b>	<b>0</b>	<b>34</b>	<b>31</b>	<b>11,494</b>

COMPLAINTS			
	DAY	NIGHT	TOTAL
Events	17	4	21
Complaints	18	4	22
Operations (Ops)	11,287	207	11,494
%Events/Ops	0.2%	1.9%	0.2%
Complaints & Events	0.9	1.0	1.0
%Complaints/Ops	0.2%	1.9%	0.2%

NIGHT OPERATIONS	
Air Ambulance (AA)	J 1
EMS	H 1
Sheriff's Office	H 40
Mosquito Control	H 0
Mosquito Control	P 10
<b>Public Service</b>	<b>J,H,P 52</b>
Non-Jet Air Carrier & GA	H,P 90
Total GA Jet Ops	J 34
Total AT Jet Ops	J 31
Total Jet Operations	J 66
<b>Night Ops - Total</b>	<b>J,H,P 207</b>

RESTRICTIONS		Violations	Letters
<b>Mandatory Restriction (MR)</b>			
Runups: Maintenance		0	0
Jet Stage 1 day & night Ops		0	0
Jet Stage 2 day & night Ops		0	0
<b>Voluntary Restriction (VR)</b>			
Jet Stage 3 night Ops		1	1

# NOISE COMPLAINTS & OPERATIONS SUMMARY

APPENDIX C

MONTH: November 2006

DATE	7 AM - 10 PM							10 PM - 7 AM							TOTAL OPERATIONS				
	JET-HELO-PROP			JET OPS				JET-HELO-PROP			JET OPS								
	EVENTS	COMPLAINTS	OPERATIONS	TOTAL STAGE 1 OPERATIONS	TOTAL STAGE 2 OPERATIONS	AA STAGE 1 (EXEMPT)	AA STAGE 2 (EXEMPT)	AA STAGE 3 OPERATIONS	EVENTS	COMPLAINTS	OPERATIONS	TOTAL STAGE 1 OPERATIONS	TOTAL STAGE 2 OPERATIONS	AA STAGE 1 (EXEMPT)		AA STAGE 2 (EXEMPT)	AA STAGE 3 OPERATIONS	STAGE 3 GA OPERATIONS	STAGE 3 AT OPERATIONS
Wed-01			596							5								1	601
Thur-02	4	4	477							11						2	1	1	488
Fri-03	11	13	526						1	1	7						4	1	533
Sat-04	2	2	346						1	1	8						4	1	354
Sun-05	6	6	452							9							1		461
Mon-06	7	7	360							8							1	1	368
Tue-07	7	7	233						1	1	7						1	1	240
Wed-08	1	1	455					2		6								1	461
Thur-09	2	2	578						1	1	8						1	2	586
Fri-10	7	10	516							9								1	525
Sat-11	7	7	442							5							2	1	447
Sun-12	7	7	428						1	2	7						3		435
Mon-13	7	8	433							9							1	2	442
Tue-14	3	3	436						1	1	8						4	1	444
Wed-15	5	6	504						2	3	15						3	2	519
Thur-16	3	5	230						1	1	3						2	1	233
Fri-17	8	9	504					2		9							1	1	513
Sat-18	1	1	436							5							1	1	441
Sun-19	1	1	466							5							1	1	471
Mon-20	3	3	392						1	1	6						2	1	398
Tue-21	1	1	475					2		7							4	1	482
Wed-22			404							5							1	1	409
Thu-23	2	2	141							4								1	145
Fri-24	5	5	454						1	1	3						1		457
Sat-25	3	4	433							5								1	438
Sun-26	5	6	477						2	2	5						3	1	482
Mon-27	5	5	491						1	1	7						1	1	498
Tue-28	2	2	459							1								1	460
Wed-29	1	1	436					2	1	1	6						1	2	442
Thu-30	2	2	440					2		12							6	1	452
																			0
<b>TOTALS</b>	<b>118</b>	<b>130</b>	<b>13,040</b>	<b>0</b>	<b>0</b>	<b>0</b>	<b>0</b>	<b>10</b>	<b>15</b>	<b>17</b>	<b>205</b>	<b>0</b>	<b>0</b>	<b>0</b>	<b>0</b>	<b>2</b>	<b>50</b>	<b>31</b>	<b>13,245</b>

COMPLAINTS			
	DAY	NIGHT	TOTAL
Events	118	15	133
Complaints	130	17	147
Operations (Ops)	13,040	205	13,245
%Events/Ops	0.9%	7.3%	1.0%
Complaints & Events	11	11	11
% Complaints/Ops	1.0%	8.3%	1.1%

NIGHT OPERATIONS	
Air Ambulance (AA)	J 2
EMS	H 6
Sheriff's Office	H 35
Mosquito Control	H 0
Mosquito Control	P 0
<b>Public Service</b>	<b>J,H,P 43</b>
Non-Jet Air Carrier & GA	H,P 81
Total GA Jet Ops	J 50
Total AT Jet Ops	J 31
Total Jet Operations	J 83
<b>Night Ops - Total</b>	<b>J,H,P 205</b>

RESTRICTIONS		Violations	Letters
<b>Mandatory Restriction (MR)</b>			
Runups: Maintenance		0	0
Jet Stage 1 day & night Ops		0	0
Jet Stage 2 day & night Ops		0	0
<b>Voluntary Restriction (VR)</b>			
Jet Stage 3 night Ops		5	4

## NOISE COMPLAINTS & OPERATIONS SUMMARY

APPENDIX C

MONTH: December 2006

DATE	7 AM - 10 PM							10 PM - 7 AM							TOTAL OPERATIONS				
	JET+HELO+PROP			JET OPS				JET+HELO+PROP			JET OPS								
	EVENTS	COMPLAINTS	OPERATIONS	TOTAL STAGE 1 OPERATIONS	TOTAL STAGE 2 OPERATIONS	AA STAGE 1 (EXEMPT)	AA STAGE 2 (EXEMPT)	AA STAGE 3 OPERATIONS	EVENTS	COMPLAINTS	OPERATIONS	TOTAL STAGE 1 OPERATIONS	TOTAL STAGE 2 OPERATIONS	AA STAGE 1 (EXEMPT)		AA STAGE 2 (EXEMPT)	AA STAGE 3 OPERATIONS	STAGE 3 GA OPERATIONS	STAGE 3 AT OPERATIONS
Fri-01			397					2	1	1	5						1	1	402
Sat-02	1	1	330						1	1	4							1	334
Sun-03	1	1	434								0								434
Mon-04	2	2	322						1	1	9						6	1	331
Tues-05	1	1	443						1	1	8							2	451
Wed-06	1	2	393						2	2	8						3	1	401
Thur-07	1	1	350								9						3	1	359
Fri-08	6	6	273						1	2	15						5	1	288
Sat-09			324								8							1	332
Sun-10	5	8	405								5						2		410
Mon-11	2	2	332								9						1		341
Tues-12	3	3	358					2			9				2	1	1		367
Wed-13	5	6	424						1	2	8						3	1	432
Thur-14	1	1	254						1	1	7						2	2	261
Fri-15	3	3	252								3						1		255
Sat-16			92								5						1		97
Sun-17	1	1	358								2								360
Mon-18			319								3						1		322
Tues-19			368					2			8						2		376
Wed-20	1	1	372						1	3	7						4		379
Thurs-21	2	5	255								9						1		264
Fri-22	3	4	181								8						5	1	189
Sat-23	1	1	285					2			5						1		290
Sun-24			178								6						4		184
Mon-25	2	2	50						1	1	2						2		52
Tues-26	7	7	308						1	1	6						3		314
Wed-27	3	3	492					2			7						3		499
Thurs-28	3	4	397		2						14						9		411
Fri-29	2	2	345					2			4						2		349
Sat-30	4	5	343					2			7						3		350
Sun-31	3	3	200								2								202
<b>TOTALS</b>	<b>64</b>	<b>75</b>	<b>9,834</b>	<b>0</b>	<b>2</b>	<b>0</b>	<b>0</b>	<b>14</b>	<b>12</b>	<b>16</b>	<b>202</b>	<b>0</b>	<b>0</b>	<b>0</b>	<b>0</b>	<b>2</b>	<b>69</b>	<b>14</b>	<b>10,036</b>

COMPLAINTS			
	DAY	NIGHT	TOTAL
Events	64	12	76
Complaints	75	16	91
Operations (Ops)	9,834	202	10,036
%Events/Ops	0.7%	5.9%	0.8%
Complaints & Events	0.8	0.8	0.8
% Complaints/ Ops	0.8%	7.9%	0.8%

NIGHT OPERATIONS	
Air Ambulance (AA)	J 2
EMS	H 5
Sheriff's Office	H 34
Mosquito Control	H 0
Mosquito Control	P 0
<b>Public Service</b>	J,H,P 41
Non-Jet Air Carrier & GA	H,P 78
Total GA Jet Ops	J 69
Total AT Jet Ops	J 14
Total Jet Operations	J 85
<b>Night Ops - Total</b>	J,H,P 202

RESTRICTIONS		Violations	Letters
<b>Mandatory Restriction (MR)</b>			
Runups: Maintenance		0	0
Jet Stage 1 day & night Ops		0	0
Jet Stage 2 day & night Ops		0	0
<b>Voluntary Restriction (VR)</b>			
Jet Stage 3 night Ops		4	4