



CITY OF NAPLES AIRPORT AUTHORITY

QUARTERLY NOISE REPORT

NUMBER 44

For the period

October 1, 2007 through December 31, 2007

Prepared by the
Noise Abatement Office

TABLE OF CONTENTS

	Page
INTRODUCTION	1
PART I AIRCRAFT OPERATIONS	1
Table I	Airport Traffic Summary 2
Figure IA	Total Monthly Operations 3
Figure IB	Total Night Operations by Month 4
Table II	Quarterly Air Traffic Nighttime Operations Summary 5
Figure IC	Fiscal year Air Traffic Nighttime Operations 5
Table IIA	Fiscal Year Percentage of Nighttime Operations 6
PART II CITIZEN COMPLAINTS	7
Table III	Airport Noise Complaint Summary 8
Figure IIA	Noise Complaints by Geographical Area 9
PART III COMPLAINTS BY TIMEFRAME	10
Figure IIIA	Noise Complaints by Hour 10
Figure IIIB	Noise Complaints by Month 10
PART IV COMPLAINTS BY OPERATIONAL SOURCE	11
Figure IVA	Complaints by Type Aircraft 11
Figure IVB	Air Ambulance Operations & Complaints 11
PART V COMPLAINTS BY OPERATION AND NATURE OF DISTURBANCE	12
Figure V	Complaints by Operations 12
Figure VI	Complaints by Nature of Disturbance 12
SUMMARY	13 & 14
Appendix A	Total Aircraft Operations and Complaints
Appendix B	Noise Complaints vs. Number of Households
Appendix C	Noise Complaint / Operations Summary (Oct./Nov./Dec.)

PART I AIRCRAFT OPERATIONS

INTRODUCTION

This is the forty-fourth Quarterly Noise Report prepared by the City of Naples Airport Authority - Noise Abatement Office. This report is informational in nature. The data included in this report tracks aircraft operations and noise complaints. The information contained in this report is fiscal year (Oct. – Sept.). All percentages are rounded to the nearest percent.

AIRCRAFT OPERATIONS

Table I, page 2, Airport Traffic Summary, contains aircraft movement data from FAA Form 7230-1 and after hour statistics recorded by the City of Naples Airport Authority Security Officers. Naples Air Traffic Control Tower is operational from 6:00 AM through 10:00 PM. A single movement represents either one arrival or one departure by the indicated aircraft category.

This Quarter Compared to Previous Quarter

Compared to the previous quarter, air carrier traffic has increased by 123%; general aviation activity has increased by 18% and total traffic increased by 23%, from 26,762 operations to 32,953. The daily average for the First Quarter was 359 operations.

This Quarter Compared to the Same Period One Year Ago

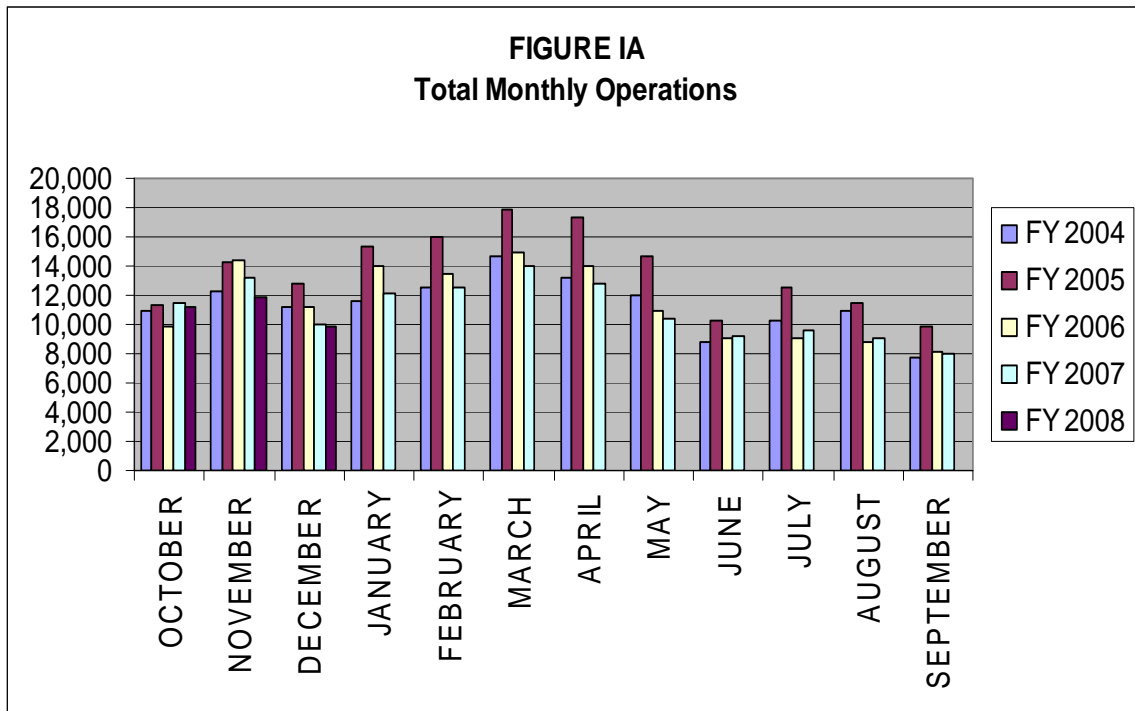
Compared to the same period last year, air carrier traffic has increased by 5% and general aviation air traffic has decreased 6%. Total air traffic operations decreased by 5% from 34,775 operations to 32,953.

Table I

AIRPORT TRAFFIC SUMMARY
Landings and Takeoffs
 Fiscal Years 2007-2008

YEAR	AIR CARRIER	GENERAL AVIATION	MILITARY	TOTAL TRAFFIC	DAILY AVERAGE
2007					
OCTOBER	702	10,786	6	11,494	371
NOVEMBER	1,166	12,070	9	13,245	442
DECEMBER	1,070	8,960	6	10,036	324
TOTALS FOR 1st QUARTER	2,938	31,816	21	34,775	379
JANUARY					
JANUARY	1,286	10,902	10	12,198	393
FEBRUARY	1,449	11,068	6	12,523	447
MARCH	1,538	12,392	4	13,934	450
TOTALS FOR 2nd QUARTER	4,273	34,362	20	38,655	430
APRIL					
APRIL	1,431	11,422	4	12,857	429
MAY	990	9,451	1	10,442	337
JUNE	536	8,708	4	9,248	308
TOTALS FOR 3rd QUARTER	2,957	29,581	9	32,547	358
JULY					
JULY	520	9,108	1	9,629	311
AUGUST	457	8,637	2	9,096	293
SEPTEMBER	399	7,634	4	8,037	268
TOTALS FOR 4th QUARTER	1,376	25,379	7	26,762	291
TOTALS FOR FY07	11,544	121,138	57	132,739	365
2008					
OCTOBER	718	10,420	7	11,145	360
NOVEMBER	1,234	10,664	7	11,905	397
DECEMBER	1,119	8,777	7	9,903	320
TOTALS FOR 1st QUARTER	3,071	29,861	21	32,953	359

Figure IA below illustrates the airport's month-by-month total operational levels for fiscal years 2004, 2005, 2006, 2007 and 2008.



There was a 5% decrease in overall airport operations during the First Quarter of 2008, when compared to the same period in 2007.

Night Time Operations

Figure IB, below, illustrates the airport's total nighttime (10:00 PM – 7:00 AM) operational levels for fiscal year 2004, 2005, 2006, 2007 and 2008.

Total nighttime operations have increased by nineteen percent (19%) in the First Quarter of 2008 when compared to the First Quarter 2007 statistics. Jet operations occurring at night decreased by 3 operations and single and multi-engine aircraft operations increased by 82.

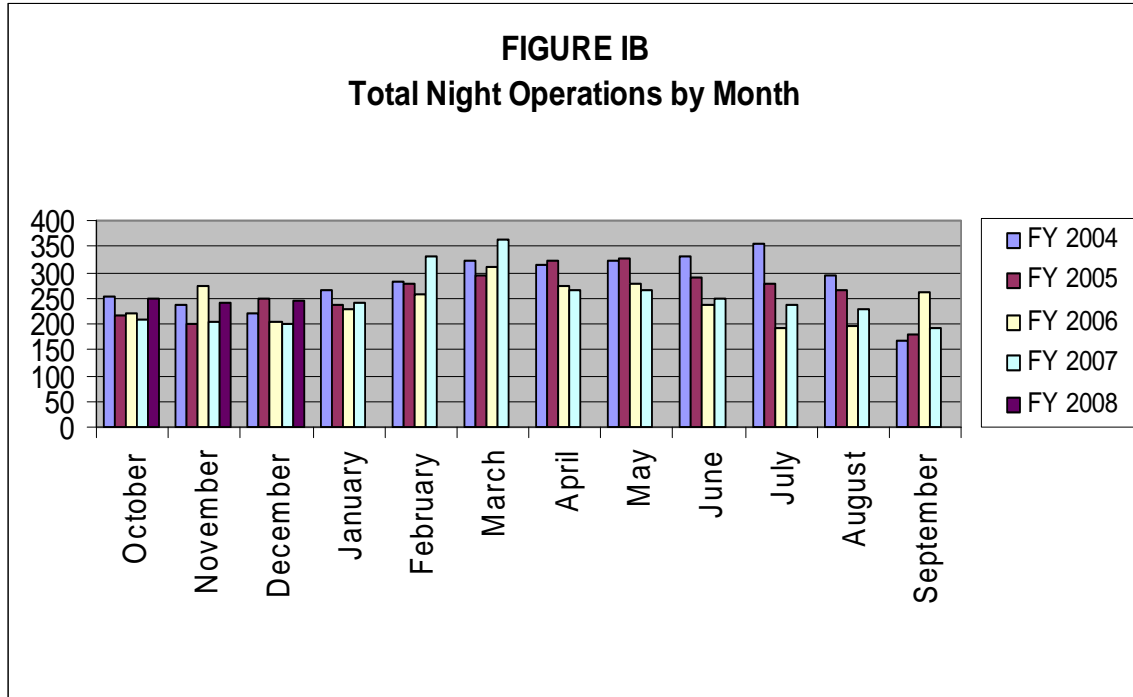


Table II, below, summarizes the types of nighttime operations occurring at the airport during the previous five quarters. Nighttime operations include voluntary curfew hours (10:00 PM through 7:00 AM). Reported nighttime operations have increased by 19% when compared to the same time last year. Air carrier operations have had a significant reduction of seventy-six operations due to Delta no longer operating at the airport. General aviation jet traffic has increased by seventy-one (71) operations and single and multi-engine aircraft operations have increased by eighty-two (82) operations.

Public Service operations represent 24% of the activity occurring at night and have increased thirty-three percent (33%) when compared to the same period last year. Nighttime operations accounted for two percent (2%) of the overall operations for the First Quarter of 2008.

Table II
Quarterly Air Traffic Nighttime Operations Summary – by Fiscal Year

Activity	1 st 2007	2 nd 2007	3 rd 2007	4 th 2007	1 st 2008
Jets					
Air Ambulance	5	5	3	7	4
Air Carrier	76	10	7	24	0
GA	153	343	162	71	224
Subtotal Jets	234	358	172	102	228
Single & Multi-engine (includes air carrier & GA)	249	409	379	316	331
Public Service					
Mosquito Control Operations	10	2	50	82	17
Collier Sheriff's Office	109	136	161	137	116
EMS	12	33	21	21	41
Coast Guard	0	0	0	1	0
Subtotal Public Service	131	171	232	241	174
Total	614	938	783	659	733

Figure IC, below, illustrates the airport's total nighttime (10:00 PM – 7:00 AM) operational levels for fiscal years 2001 through 2007.

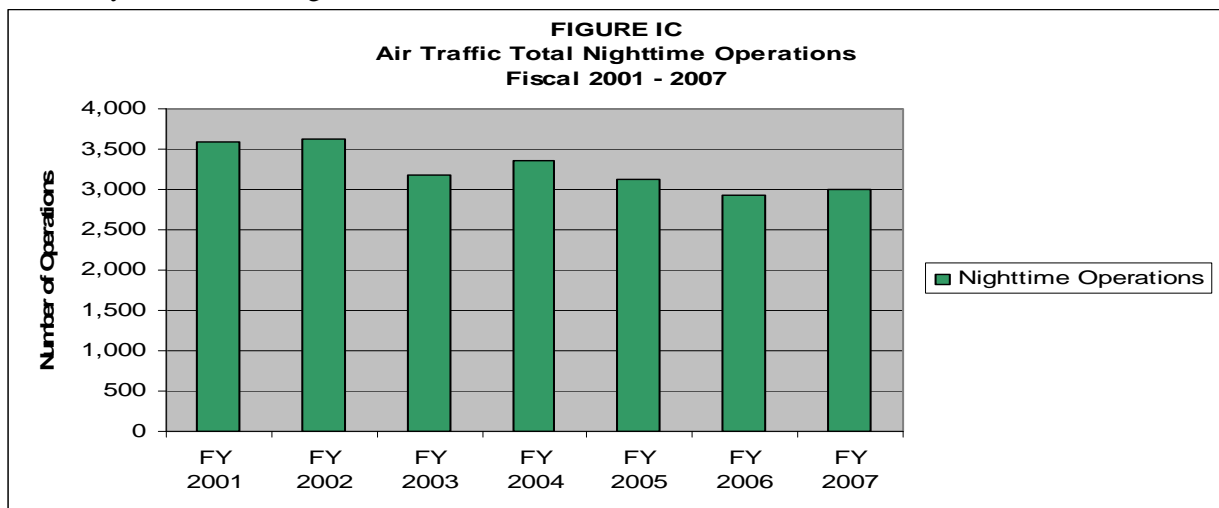


Table II A, depicts the percentage of nighttime operations as compared to total operations for the last six fiscal years. Night operations represent three percent (3%) for FY 02 – 03 and two percent (2%) of the total operations for FY 04, FY 05, FY 06 and FY 07. This is a one percent (1%) decrease when compared to FY 02 – 03.

Table II A
Fiscal Year Percentage of Nighttime Operations

Fiscal Year	Total Operations	Night Operations	% of Night Ops	% of Jet Night Ops
2002	138,790	3,626	3%	21%
2003	112,308	3,170	3%	23%
2004	136,128	3,361	2%	23%
2005	163,434	3,130	2%	34%*
2006	137,908	2,935	2%	38%*
2007	132,908	2,994	2%	29%*

* Delta began CRJ service in FY05. They had 328 nighttime operations in FY 05, 352 nighttime operations in FY 06 and 117 nighttime operations in FY 07. Without Delta's operations, the percentage of jet night operations in FY05 would have been twenty-four percent (24%) of the total nighttime operations and twenty-six percent (26%) of the total in FY 06 and twenty-five percent (25%) of the total in FY 07.

PART II CITIZEN COMPLAINTS

Table III, on page 8, is a summary of citizen noise complaints separated according to four geographical areas (Quadrants). Below is a sample representation of the neighborhoods in each Quadrant. Every neighborhood in the area is not included in this list, although it is included in the Quadrant total.

Northeast Quadrant - Briarwood, Coconut River Estates, Golden Gate, Grey Oaks, Hawks Ridge, Wyndemere, and surrounding northeast areas.

Northwest Quadrant - Bears Paw, Coconut River Estates, Coquina Sands, Country Club of Naples, Lake Forest, Lake Park, Park Shore, Ridge Lakes, River Estates, River Reach, Sun Terrace, Moorings, Wilderness, and surrounding northwest areas.

Southwest Quadrant - Aqualane Shores, Old Naples, Port Royal, Royal Harbor, and surrounding southwest neighborhoods.

Southeast Quadrant - Brookside, Coconut Grove, Flamingo Estates, Foxfire, Kings Lake, Lakewood, Naples Gardens, Rock Creek Campground, The Glades, and surrounding neighborhoods.

The analysis will include the specific nature of the complaint, whether it was an arriving or departing aircraft or an overflight. Complaints relative to nighttime Mosquito Control operations, Air Ambulance Flights, Sheriff's Office and EMS helicopter operations are included in this report.

This Quarter Compared to Previous Quarter

This quarter's noise complaints, compared to the previous quarter, have increased from 27 to 72. Complaints received from neighborhoods to the northeast of the airport have increased by 30, from the northwest they have decreased by 2, from the southeast they have increased by 3, from the southwest increased by 11 and unknown increased by 3.

This Quarter Compared to the Same Period One Year Ago

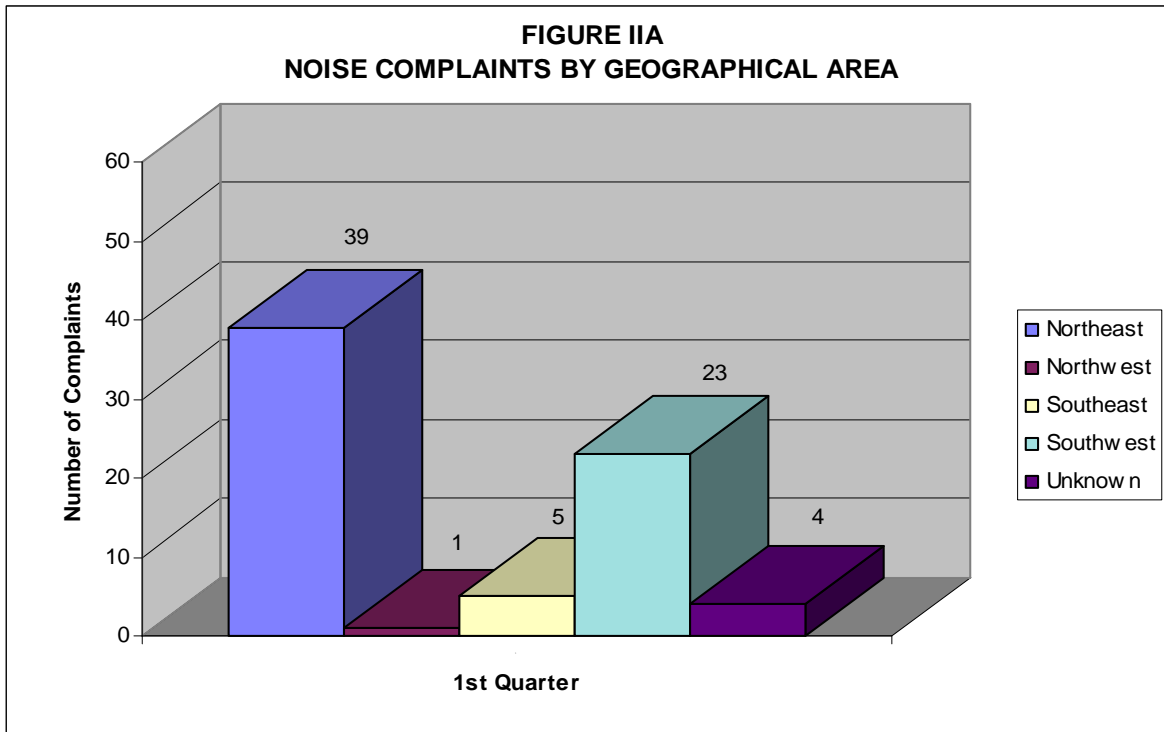
Compared to the same period last year, the total number of complaints decreased by 188 calls. Complaints received from neighborhoods to the northeast of the airport have decreased by 166, from the northwest they have decreased by 1, from the southeast decreased by 7, from the southwest decreased by 14 and unknown remained the same at 4. Total complaints received have decreased from 260 to 72.

AIRPORT NOISE COMPLAINT SUMMARY
Fiscal Years 2007-2008

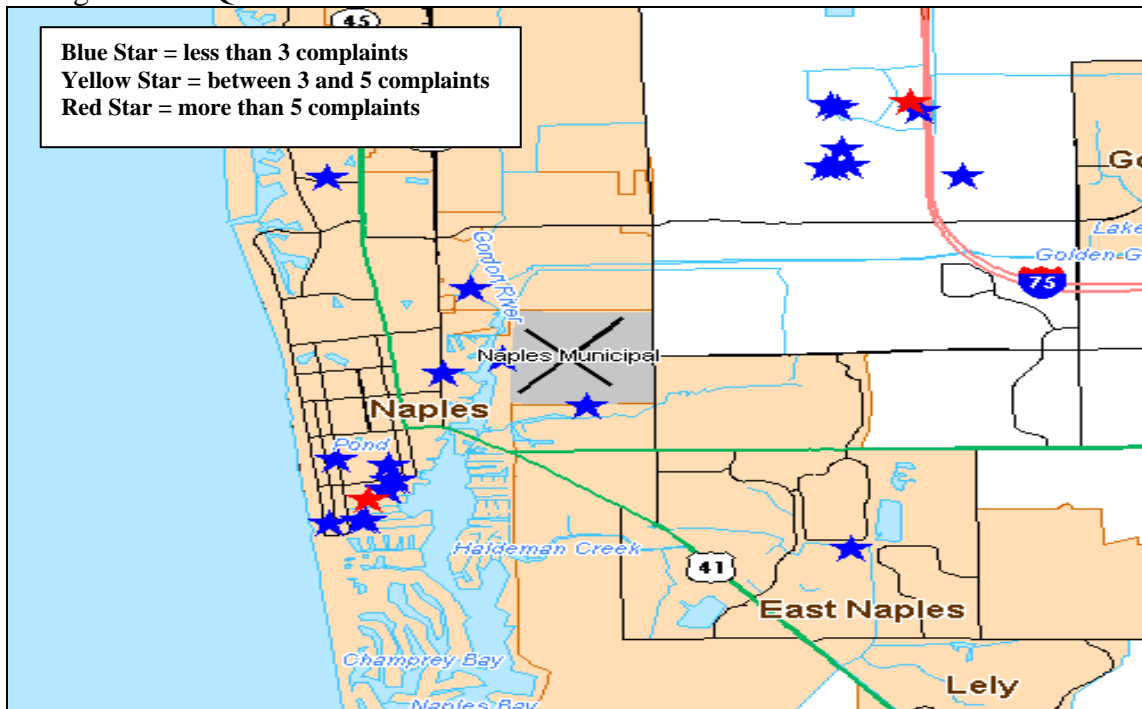
YEAR	Northeast	Northwest	Southeast	Southwest	Unknown Location	Monthly Total
2007						
OCTOBER	9	-	-	11	2	22
NOVEMBER	120	2	7	18	-	147
DECEMBER	76	-	5	8	2	91
TOTALS FOR 1st QUARTER	205	2	12	37	4	260
2007						
JANUARY	274	5	4	14	2	299
FEBRUARY	164	-	1	29	3	197
MARCH	28	-	1	29	1	59
TOTALS FOR 2nd QUARTER	466	5	6	72	6	555
2007						
APRIL	23	-	14	12	-	49
MAY	12	1	-	12	4	29
JUNE	6	-	1	3	-	10
TOTALS FOR 3rd QUARTER	41	1	15	27	4	88
2007						
JULY	6	-	-	5	-	11
AUGUST	-	2	-	3	1	6
SEPTEMBER	3	1	2	4	-	10
TOTALS FOR 4th QUARTER	9	3	2	12	1	27
TOTALS FOR FY07	721	11	35	148	15	930

2008						
OCTOBER	3	-	3	-	-	6
NOVEMBER	18	1	-	13	4	36
DECEMBER	18	-	2	10	-	30
TOTALS FOR 1st QUARTER	39	1	5	23	4	72

Figure IIA, below, graphically compares the noise complaints received by geographical areas based on data collected during the First Quarter of 2008. Total complaints for this quarter have decreased by seventy-two percent (72%) when compared to the same period one year ago.



The map below shows the location of the complainants that provided an address, made during the First Quarter of 2008.



PART III COMPLAINTS BY TIMEFRAME

Figure IIIA, below, depicts noise complaints for the First Quarter according to the time of the single event. The highest number of complaints were received between the hours of 2:00 PM and 7:00 PM (47%) and at 10:00 PM (13%). Twenty-eight percent (28%) of the total complaints were received during the voluntary curfew hours.

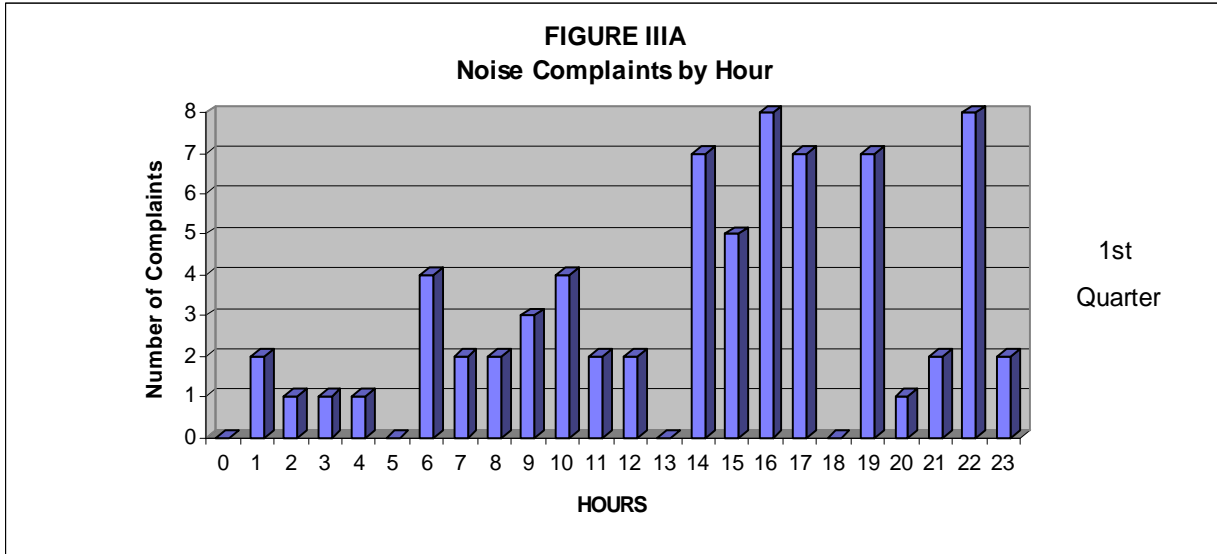
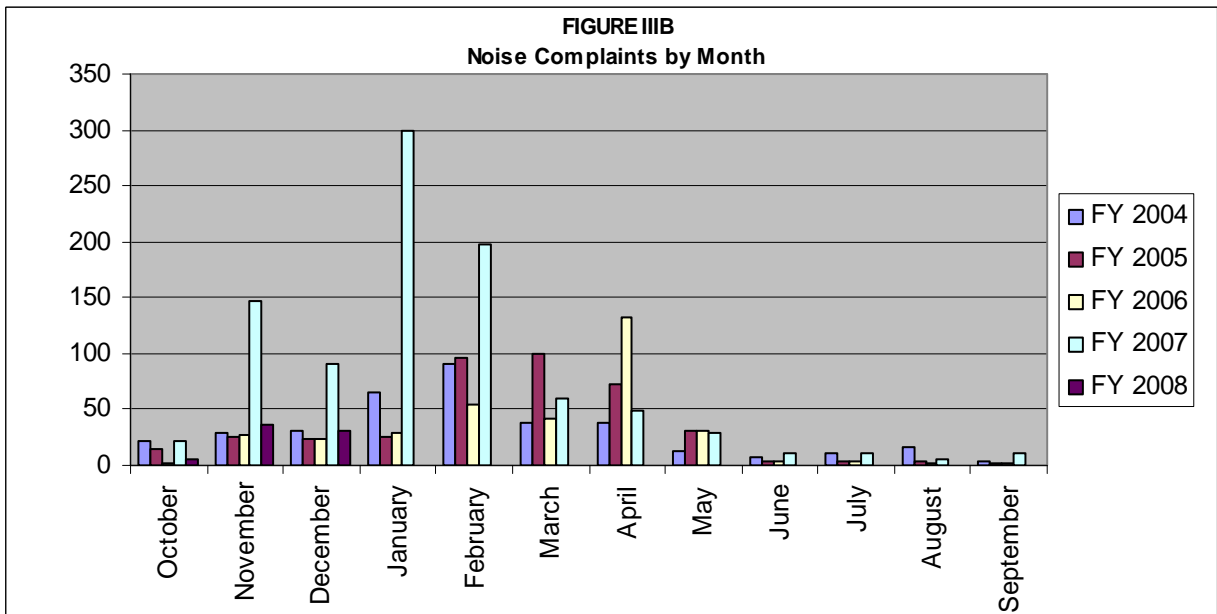


Figure IIIB below, illustrates the airport's complaint volume for fiscal years 2004, 2005, 2006, 2007 and 2008.



PART IV COMPLAINTS BY OPERATIONAL SOURCE

Figure IVA below, indicates what types of aircraft the complainants were calling about. Eighty-two percent (82%) of the complaints were about Stage 3 jet aircraft operations which includes one complaint about a Stage 3 Air Ambulance operation.

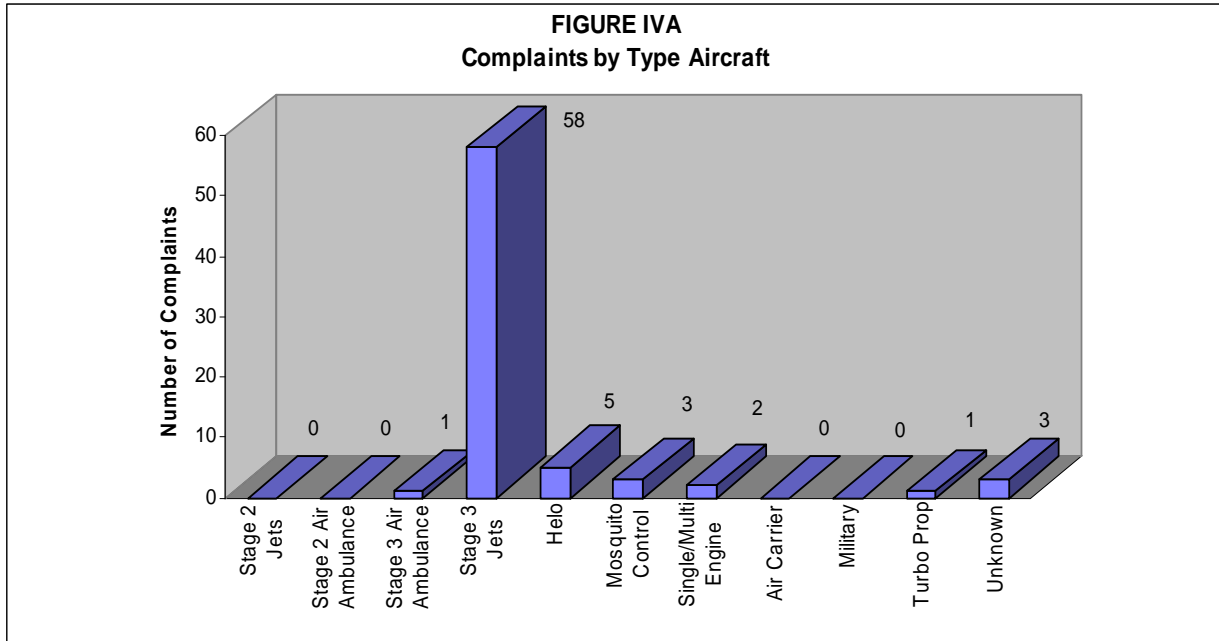
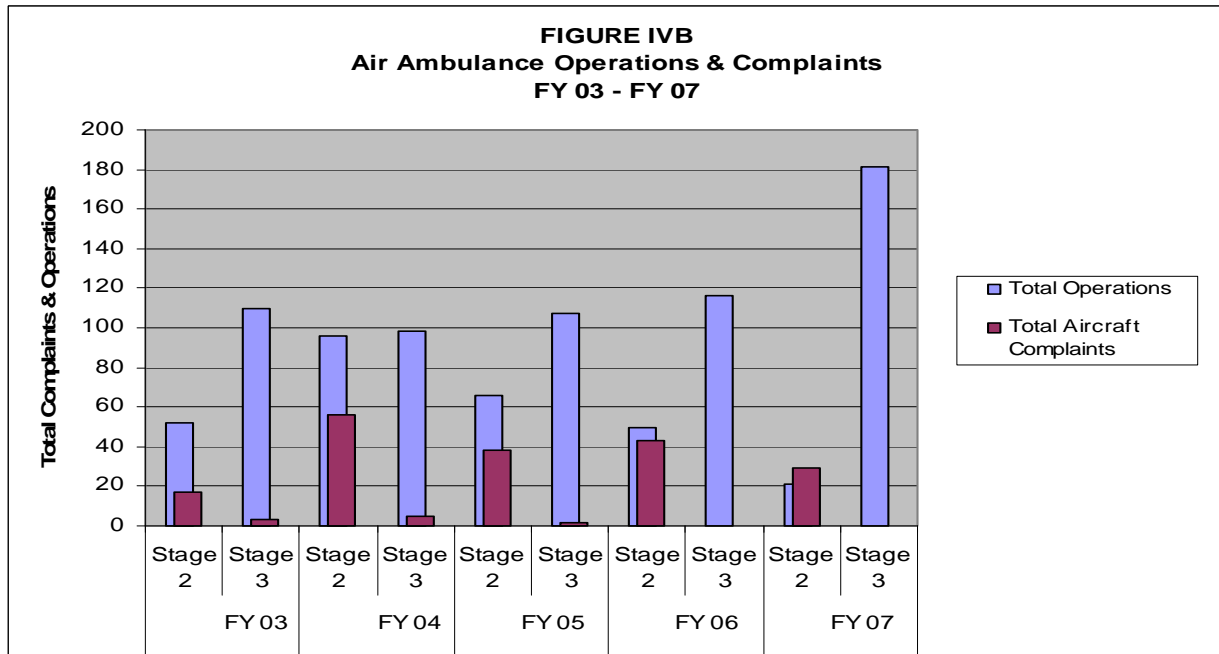


Figure IVB, below, depicts operations and noise complaints received from Stage 2 and Stage 3 Air Ambulances during FY 2003, 2004, 2005, 2006 and 2007.



PART V
COMPLAINTS BY OPERATION AND NATURE OF DISTURBANCE

Figure V below, shows the operational source of the noise complaints from the First Quarter of 2008. The data indicates that departures account for forty-nine percent (49%) and arrivals account for thirty-six percent (36%) of the main operational source of complaints.

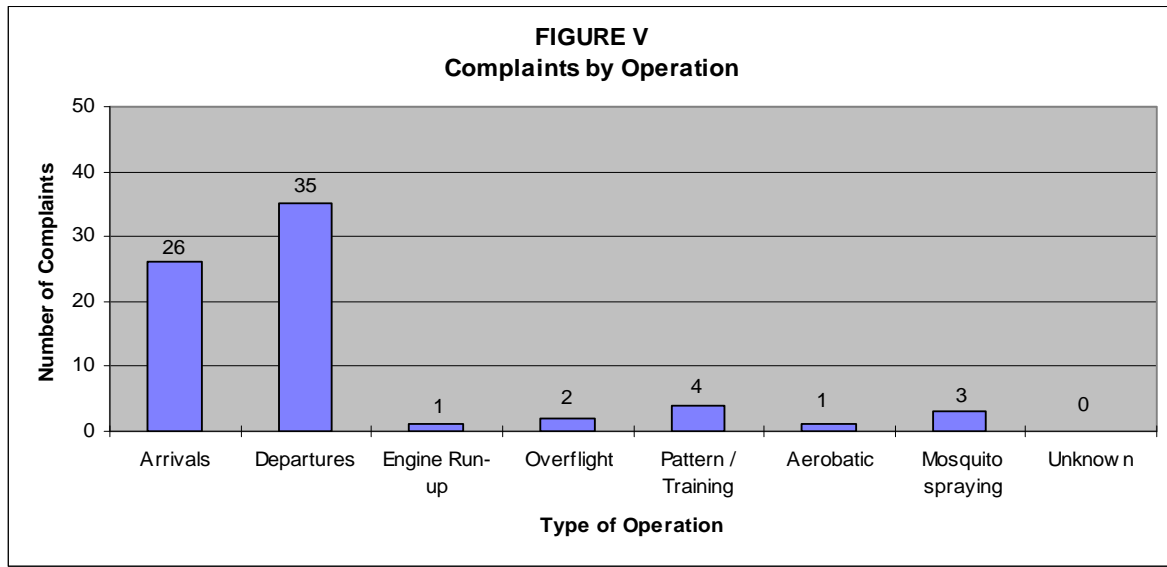
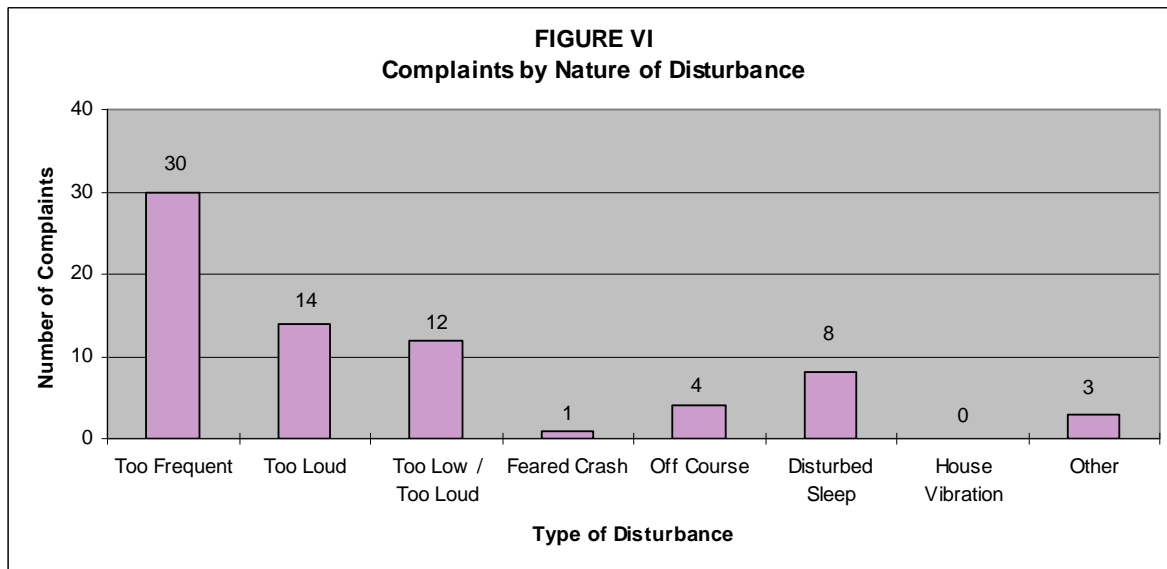


Figure VI below indicates the nature of the disturbances from complainants during this quarter. Most calls were in reference to the frequency of the disturbance (42%) followed by “too loud” (19%) and “too low / too loud” (17%). Eleven percent (11%) of the callers reported that they had their sleep disturbed.



SUMMARY

Air Traffic

Compared to the previous quarter, air carrier traffic has increased 123%, general aviation traffic has increased by 18%, and total air traffic has increased by 23%. Compared to the same period one year ago, air carrier traffic increased 5%, general aviation operations have decreased by 6%, and total traffic has decreased 5%.

Twenty-two percent (22%) of the total nighttime operations were attributed to Emergency Services helicopters and air ambulance jet aircraft. Jet aircraft operations at night have decreased by six (6) operations when compared to same period last year. Single and multi-engine aircraft operations have increased by eighty-two (82) operations and Mosquito Control operations have increased by seven (7) operations. Total nighttime operations have increased by one hundred and nineteen (119) operations, or nineteen percent (19%) when compared to last year.

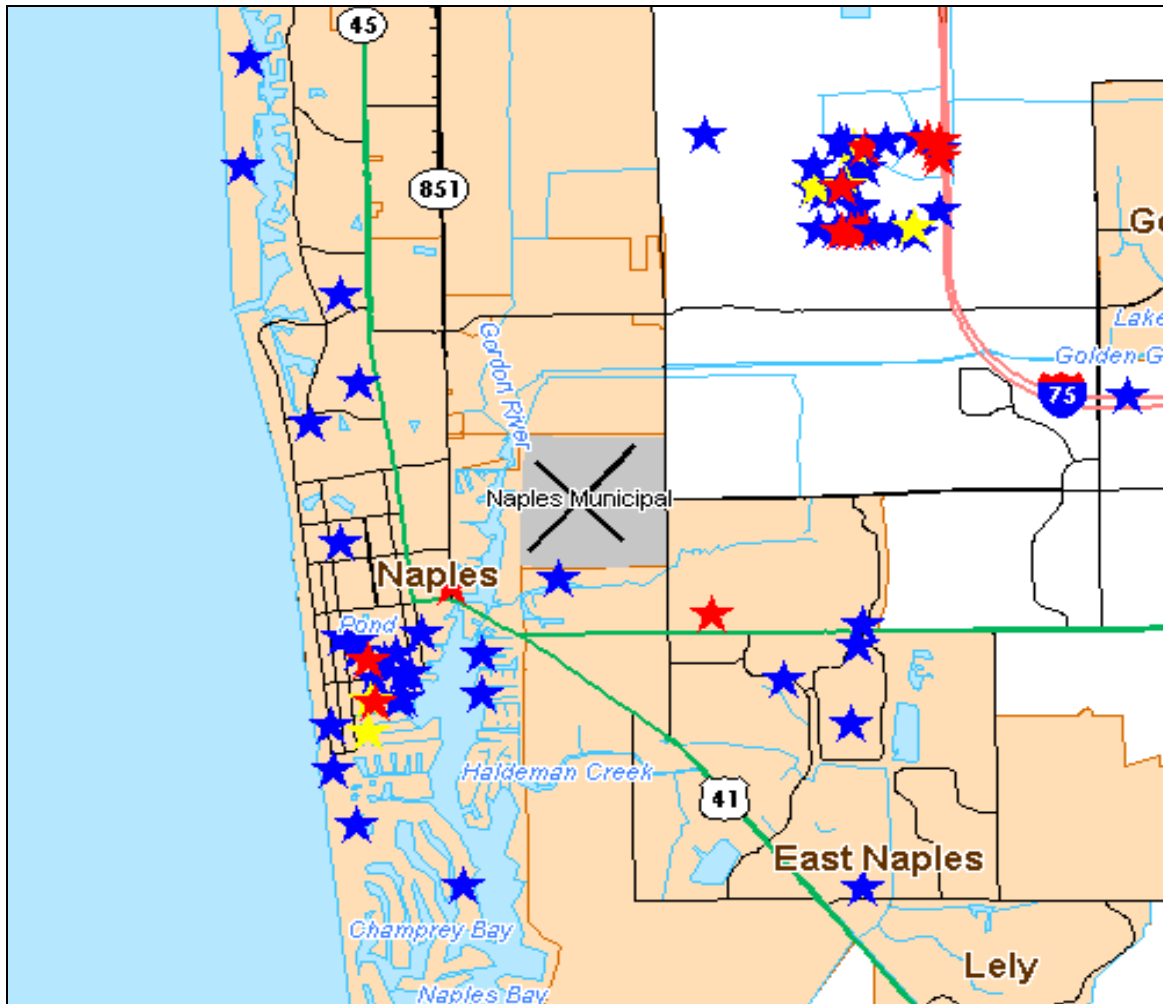
Noise Complaints

Compared to the previous quarter, noise complaints have increased from 27 to 72. Northeast Quadrant neighborhoods generated the most complaints during the Fiscal First Quarter of 2008, with a total of 39 complaints. Other areas generated the following number of complaints: Northwest-1, Southwest-23, Southeast-5 and Unknown locations-4.

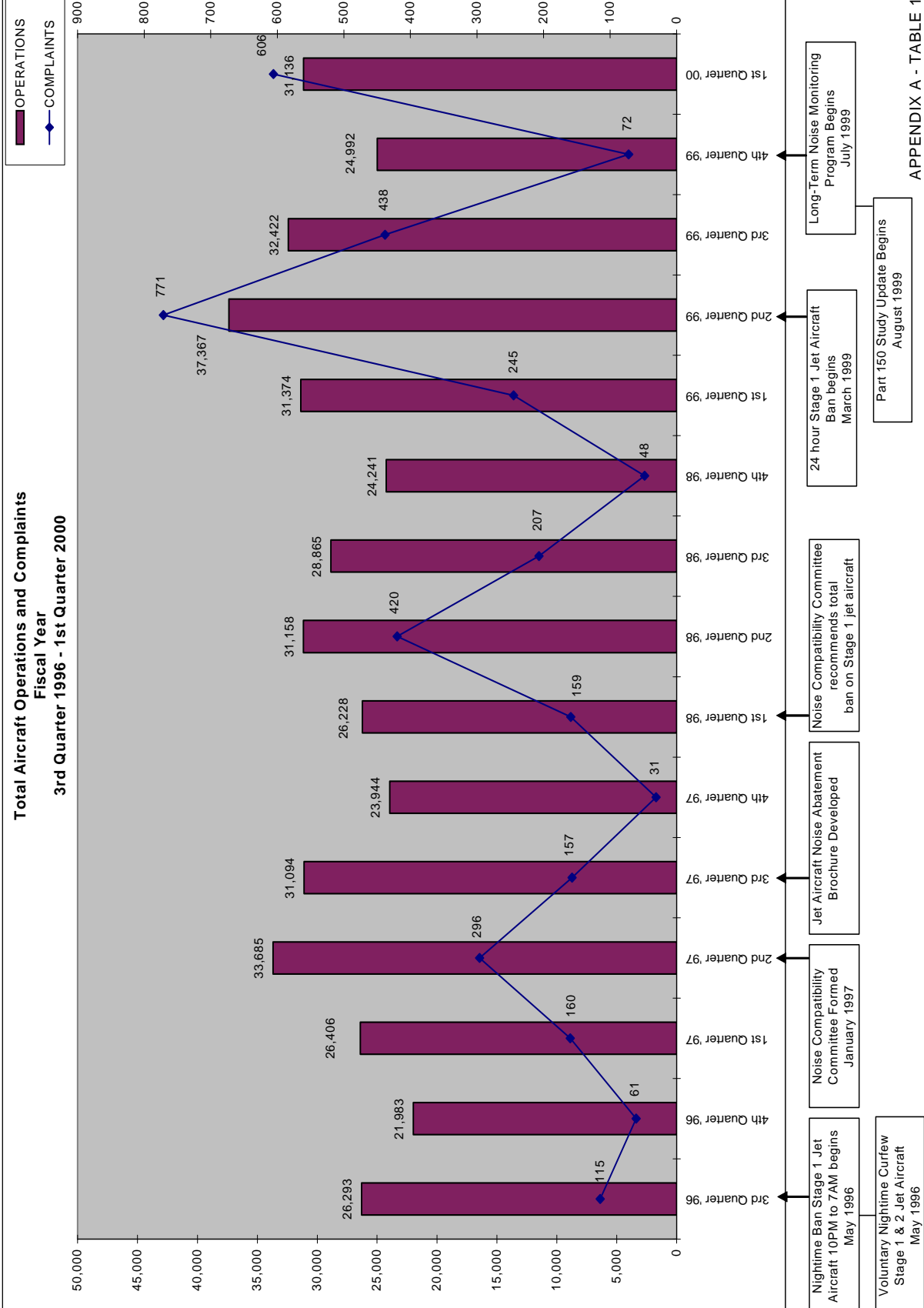
Noise Complaints by Family

Thirty-seven (37) different families made 72 complaints to the Noise Abatement Office during the Fiscal First Quarter of 2008. Two families from the northeast made 20 calls and two families from the southwest made 10 calls or 42% of the total complaints for this quarter.

Below is a newly added map that depicts the location of complainants that provided an address, made during FY07.



Blue Star = less than 3 complaints
Yellow Star = between 3 and 5 complaints
Red Star = more than 5 complaints



Long-Term Noise Monitoring Program Begins July 1999

24 hour Stage 1 Jet Aircraft Ban begins March 1999

Noise Compatibility Committee recommends total ban on Stage 1 jet aircraft

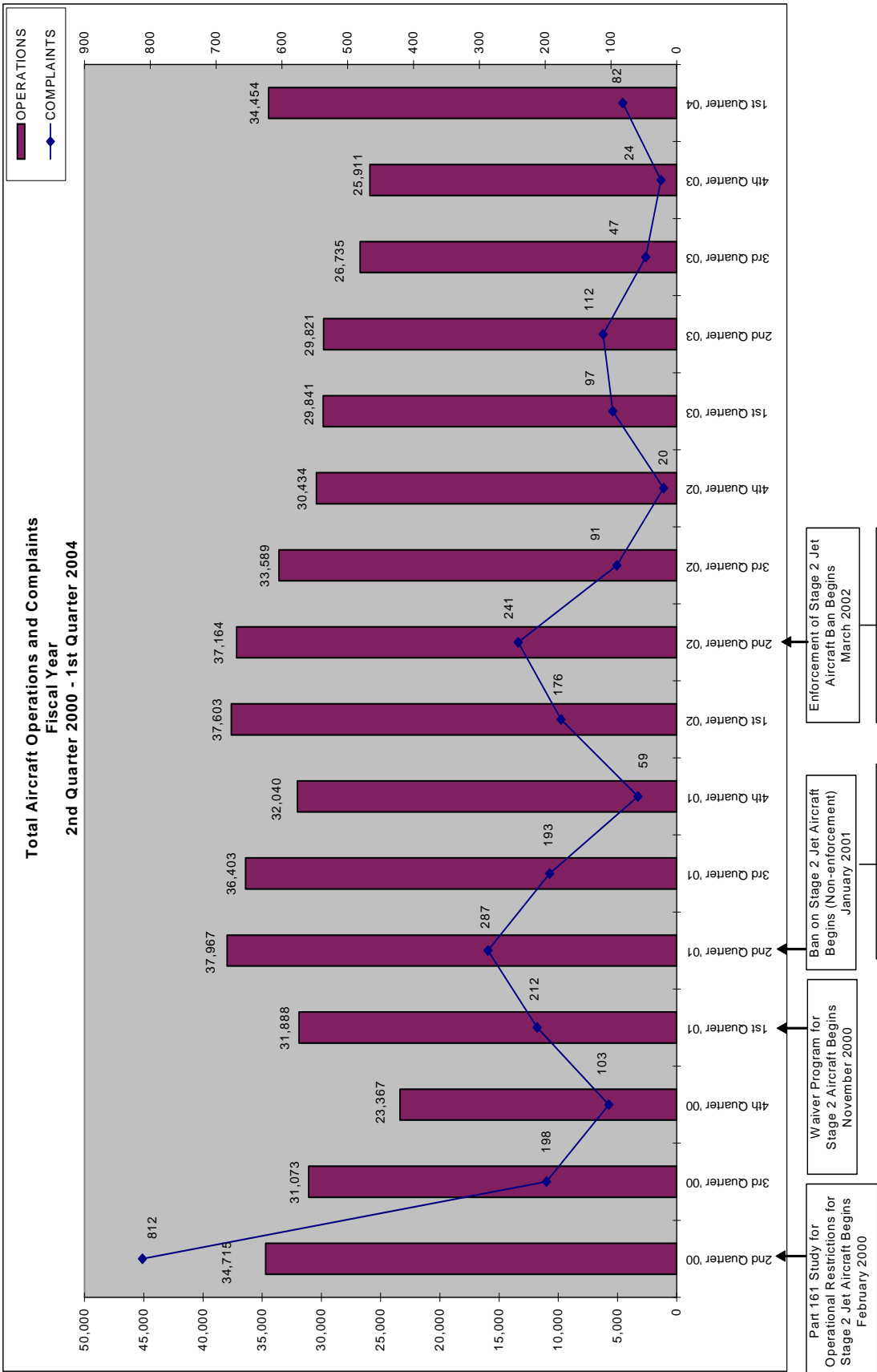
Jet Aircraft Noise Abatement Brochure Developed

Noise Compatibility Committee Formed January 1997

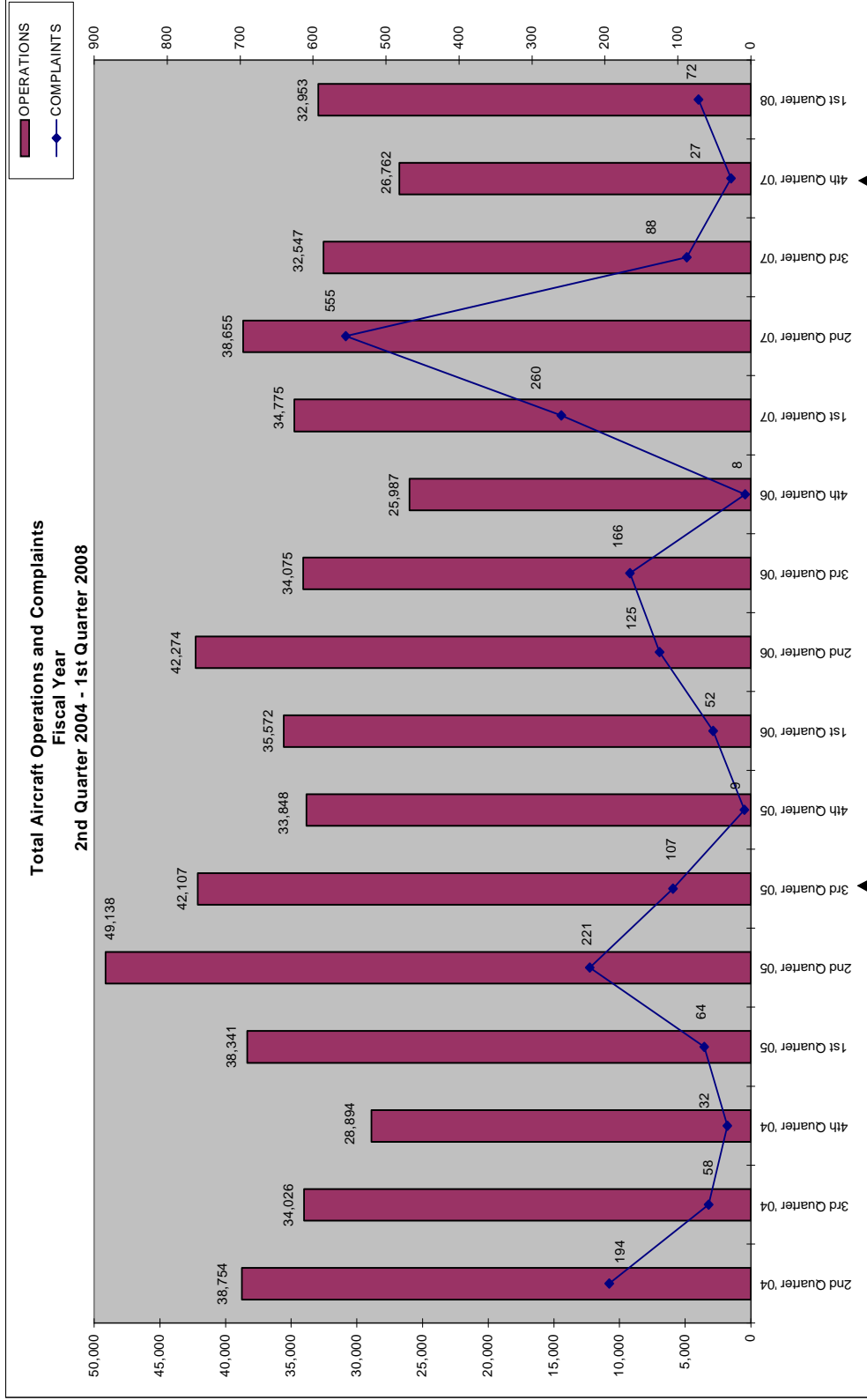
Nightime Ban Stage 1 Jet Aircraft 10PM to 7AM begins May 1996

Part 150 Study Update Begins August 1999

Voluntary Nightime Curfew Stage 1 & 2 Jet Aircraft May 1996



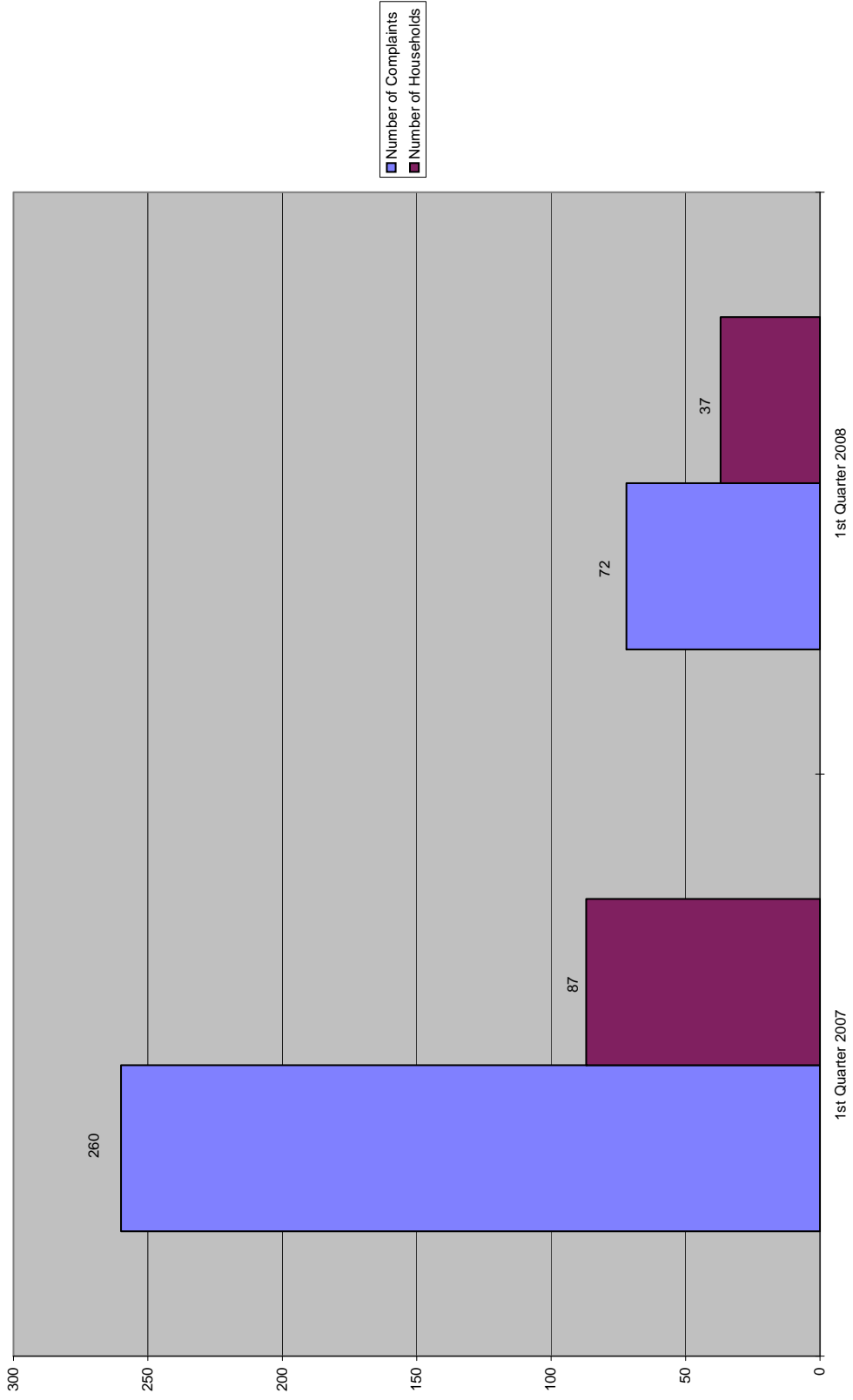
APPENDIX A - TABLE 2



Noise Exposure Map Update Completed

Stage 2 Jet Aircraft Ban Upheld in U.S. Court of Appeals

Number of Complaints vs. Number of Households
1st QUARTER



NOISE COMPLAINTS & OPERATIONS SUMMARY

APPENDIX C

MONTH: October 2007

DATE	7 AM - 10 PM								10 PM - 7 AM								TOTAL OPERATIONS		
	JET+HELO+PROP			JET OPS					JET+HELO+PROP			JET OPS							
	EVENTS	COMPLAINTS	OPERATIONS	TOTAL STAGE 1 OPERATIONS	TOTAL STAGE 2 OPERATIONS	AA STAGE 1 (EXEMPT)	AA STAGE 2 (EXEMPT)	AA STAGE 3 OPERATIONS	EVENTS	COMPLAINTS	OPERATIONS	TOTAL STAGE 1 OPERATIONS	TOTAL STAGE 2 OPERATIONS	AA STAGE 1 (EXEMPT)	AA STAGE 2 (EXEMPT)	AA STAGE 3 OPERATIONS		STAGE 3 GA OPERATIONS	STAGE 3 AT OPERATIONS
Mon-01			161								5						1		166
Tues-02			266								3								269
Wed-03			329								8						2		337
Thur-04			414						1	2	10						1		424
Fri-05			235						1	1	18						2		253
Sat-06			237								2								239
Sun-07			283								7						2		290
Mon-08			330								8						4		338
Tues-09			380								11						2		391
Wed-10			362								10						1		372
Thur-11			354								8						1		362
Fri-12			451								18						2		469
Sat-13			371								8						2		379
Sun-14			284								8						3		292
Mon-15			294								6						1		300
Tues-16			354								16						2		370
Wed-17			466								11						2		477
Thur-18			522								11						3		533
Fri-19			431								10						4		441
Sat-20			186								3								189
Sun-21			336								6						2		342
Mon-22			457								10						2		467
Tues-23			471								8						3		479
Wed-24			395								8						2		403
Thur-25			461								6						4		467
Fri-26	1	1	425								8						3		433
Sat-27			363								2						1		365
Sun-28			395								5						1		400
Mon-29	1	1	441								3								444
Tues-30	1	1	205								6						1		211
Wed - 31			239								4						2		243
TOTALS	3	3	10,898	0	0	0	0	4	2	3	247	0	0	0	0	0	56	0	11,145

COMPLAINTS			
	DAY	NIGHT	TOTAL
Events	3	2	5
Complaints	3	3	6
Operations (Ops)	10,898	247	11,145
%Events/Ops	0.0%	0.8%	0.0%
Complaints & Events	1.0	0.7	0.8
% Complaints/ Ops	0.0%	1.2%	0.1%

NIGHT OPERATIONS	
Air Ambulance (AA)	J 0
EMS	H 17
Sheriff's Office	H 40
Mosquito Control	H 1
Mosquito Control	P 13
Public Service	J,H,P 71
Non-Jet Air Carrier & GA	H,P 120
Total GA Jet Ops	J 56
Total AT Jet Ops	J 0
Total Jet Operations	J 56
Night Ops - Total	J,H,P 247

RESTRICTIONS		Violations	Letters
Mandatory Restriction (MR)			
Runups: Maintenance		0	0
Jet Stage 1 day & night Ops		0	0
Jet Stage 2 day & night Ops		0	0
Voluntary Restriction (VR)			
Jet Stage 3 night Ops		0	0

NOISE COMPLAINTS & OPERATIONS SUMMARY

APPENDIX C

MONTH: November 2007

DATE	7 AM - 10 PM								10 PM - 7 AM								TOTAL OPERATIONS		
	JET+HELO+PROP			JET OPS					JET+HELO+PROP			JET OPS							
	EVENTS	COMPLAINTS	OPERATIONS	TOTAL STAGE 1 OPERATIONS	TOTAL STAGE 2 OPERATIONS	AA STAGE 1 (EXEMPT)	AA STAGE 2 (EXEMPT)	AA STAGE 3 OPERATIONS	EVENTS	COMPLAINTS	OPERATIONS	TOTAL STAGE 1 OPERATIONS	TOTAL STAGE 2 OPERATIONS	AA STAGE 1 (EXEMPT)	AA STAGE 2 (EXEMPT)	AA STAGE 3 OPERATIONS		STAGE 3 GA OPERATIONS	STAGE 3 AT OPERATIONS
Thu-01	1	1	312								5						3		317
Fri-02			339								6						2		345
Sat-03			396								9						3		405
Sun-04			422								3						1		425
Mon-05			334		2				1	1	9						2		343
Tue-06	1	1	508						1	1	3								511
Wed-07	1	1	481						1	1	11						7		492
Thu-08			470						2	2	11						8		481
Fri-09			468						1	1	12						1		480
Sat-10	1	1	393								3						1		396
Sun-11			372								4						2		376
Mon-12			389								6								395
Tue-13			423								6								429
Wed-14	1	1	477						1	1	10						5		487
Thu-15	2	2	429						2	2	15						9		444
Fri-16			431								9								440
Sat-17			406								9						3		415
Sun-18	2	2	249								5					2			254
Mon-19	1	1	361								11						2		372
Tue-20	3	5	442						1	1	12						6		454
Wed-21	3	3	463								8						1		471
Thu-22			146								18						5		164
Fri-23			335								13								348
Sat-24			326								9						2		335
Sun-25	2	2	397						1	3	10						4		407
Mon-26			336								9						6		345
Tue-27	1	1	454					2			7						2		461
Wed-28			383								2								385
Thu-29	2	2	369								4						2		373
Fri-30			352								3						1		355
TOTALS	21	23	11,663	0	2	0	2	10	11	13	242	0	0	0	0	2	78	0	11,905

COMPLAINTS			
	DAY	NIGHT	TOTAL
Events	21	11	32
Complaints	23	13	36
Operations (Ops)	11,663	242	11,905
%Events/Ops	0.2%	4.5%	0.3%
Complaints & Events	1.1	1.2	1.1
% Complaints/ Ops	0.2%	5.4%	0.3%

NIGHT OPERATIONS	
Air Ambulance (AA)	J 2
EMS	H 12
Sheriff's Office	H 41
Mosquito Control	H 0
Mosquito Control	P 2
Public Service	J,H,P 57
Non-Jet Air Carrier & GA	H,P 107
Total GA Jet Ops	J 78
Total AT Jet Ops	J 0
Total Jet Operations	J 80
Night Ops - Total	J,H,P 242

RESTRICTIONS		Violations	Letters
Mandatory Restriction (MR)			
Runups: Maintenance		0	0
Jet Stage 1 day & night Ops		0	0
Jet Stage 2 day & night Ops		0	0
Voluntary Restriction (VR)			
Jet Stage 3 night Ops		9	5

NOISE COMPLAINTS & OPERATIONS SUMMARY

APPENDIX C

MONTH: December 2007

DATE	7 AM - 10 PM								10 PM - 7 AM								TOTAL OPERATIONS	
	JET+HELO+PROP			JET OPS					JET+HELO+PROP			JET OPS						
	EVENTS	COMPLAINTS	OPERATIONS	TOTAL STAGE 1 OPERATIONS	TOTAL STAGE 2 OPERATIONS	AA STAGE 1 (EXEMPT)	AA STAGE 2 (EXEMPT)	AA STAGE 3 OPERATIONS	EVENTS	COMPLAINTS	OPERATIONS	TOTAL STAGE 1 OPERATIONS	TOTAL STAGE 2 OPERATIONS	AA STAGE 1 (EXEMPT)	AA STAGE 2 (EXEMPT)	AA STAGE 3 OPERATIONS		STAGE 3 GA OPERATIONS
Sat-01	1	1	236							6							4	242
Sun-02	1	1	371							5							3	376
Mon-03	3	3	293							19							12	312
Tue-04	1	1	352							11							3	363
Wed-05			369							15							10	384
Thu-06	1	1	409							8							3	417
Fri-07			390							16							6	406
Sat-08			333				2			4							1	337
Sun-09	3	3	292							1								293
Mon-10			356					2		7							1	363
Tue-11			386							9							1	395
Wed-12			482						1	1	3						1	485
Thu-13			421							8							6	429
Fri-14			301							3							1	304
Sat-15	1	1	235							7								242
Sun-16			107							8							1	115
Mon-17			266							12							5	278
Tue-18			325							11							3	336
Wed-19			326							8							1	334
Thu-20			296							8							4	304
Fri-21			246							7							3	253
Sat-22	1	1	302							2								304
Sun-23			195							4							1	199
Mon-24			165							0								165
Tue-25			88						1	1	4						2	92
Wed-26	2	2	438						1	1	3						2	441
Thu-27	6	9	475						1	1	16				2	7		491
Fri-28	2	2	359						1	1	24						5	383
Sat-29			313							8							2	321
Sun-30			295					2		5							2	300
Mon-31			237					2		2								239
TOTALS	22	25	9,659	0	0	0	2	6	5	5	244	0	0	0	0	2	90	9,903

COMPLAINTS	DAY	NIGHT	TOTAL
Events	22	5	27
Complaints	25	5	30
Operations (Ops)	9,659	244	9,903
%Events/Ops	0.2%	2.0%	0.3%
Complaints & Events	0.9	1.0	0.9
% Complaints/ Ops	0.3%	2.0%	0.3%

NIGHT OPERATIONS		
Air Ambulance (AA)	J	2
EMS	H	12
Sheriff's Office	H	35
Mosquito Control	H	1
Mosquito Control	P	0
Public Service	J,H,P	50
Non-Jet Air Carrier & GA	H,P	104
Total GA Jet Ops	J	90
Total AT Jet Ops	J	0
Total Jet Operations	J	92
Night Ops - Total	J,H,P	244

RESTRICTIONS	Violations	Letters
Mandatory Restriction (MR)		
Runups: Maintenance	0	0
Jet Stage 1 day & night Ops	0	0
Jet Stage 2 day & night Ops	0	0
Voluntary Restriction (VR)		
Jet Stage 3 night Ops	2	2