



CITY OF NAPLES AIRPORT AUTHORITY

QUARTERLY NOISE REPORT

NUMBER 28

For the period

October 1, 2003 through December 31, 2003

Prepared by
Airport Operations

TABLE OF CONTENTS

	Page
INTRODUCTION	1
PART I AIRCRAFT OPERATIONS	1
Table I	Airport Traffic Summary 2
Figure IA	Total Monthly Operations 3
Figure IB	Total Night Operations by Month 4
Table II	Quarterly Air Traffic Nighttime Operations Summary 5
PART II CITIZEN COMPLAINTS	6
Table III	Airport Noise Complaint Summary 7
Figure IIA	Noise Complaints by Geographical Area 8
PART III COMPLAINTS BY TIMEFRAME	9
Figure IIIA	Noise Complaints by Hour 9
Figure IIIB	Noise Complaints by Month 9
PART IV COMPLAINTS BY OPERATIONAL SOURCE	10
Figure IV	Complaints by Type Aircraft 10
PART V COMPLAINTS BY OPERATION	11
Figure V	Complaints by Operations 11
SUMMARY	12
Appendix A	Total Aircraft Operations and Complaints
Appendix B	Noise Complaints vs. Number of Households
Appendix C	Noise Complaint / Operations Summary (Oct./Nov./Dec.)
Appendix D	Recurring Noise Monitoring Program

**PART I
AIRCRAFT OPERATIONS**

INTRODUCTION

This is the twenty-eighth Quarterly Noise Report prepared by the City of Naples Airport Authority - Airport Operations Department. This report is informational in nature. The data included in this report tracks aircraft operations, noise complaints and noise monitoring results obtained from the five (5) monitoring locations surrounding the airport (Appendix D). All percentages are rounded to the nearest percent.

AIRCRAFT OPERATIONS

Table I, page 2, Airport Traffic Summary, contains aircraft movement data from FAA Form 7230-1 and after hour statistics recorded by the City of Naples Airport Authority Security Officers. Naples Air Traffic Control Tower is operational from 6:00 AM through 10:00 PM. A single movement represents either one arrival or one departure by the indicated aircraft category.

This Quarter Compared to Previous Quarter

This quarter's commuter traffic, compared to the previous quarter, has increased by 162%. General aviation activity has increased by 28%. Total traffic increased by 33%, from 25,911 operations to 34,454. The daily average for the Fourth Quarter was 368 operations.

This Quarter Compared to the Same Period One Year Ago

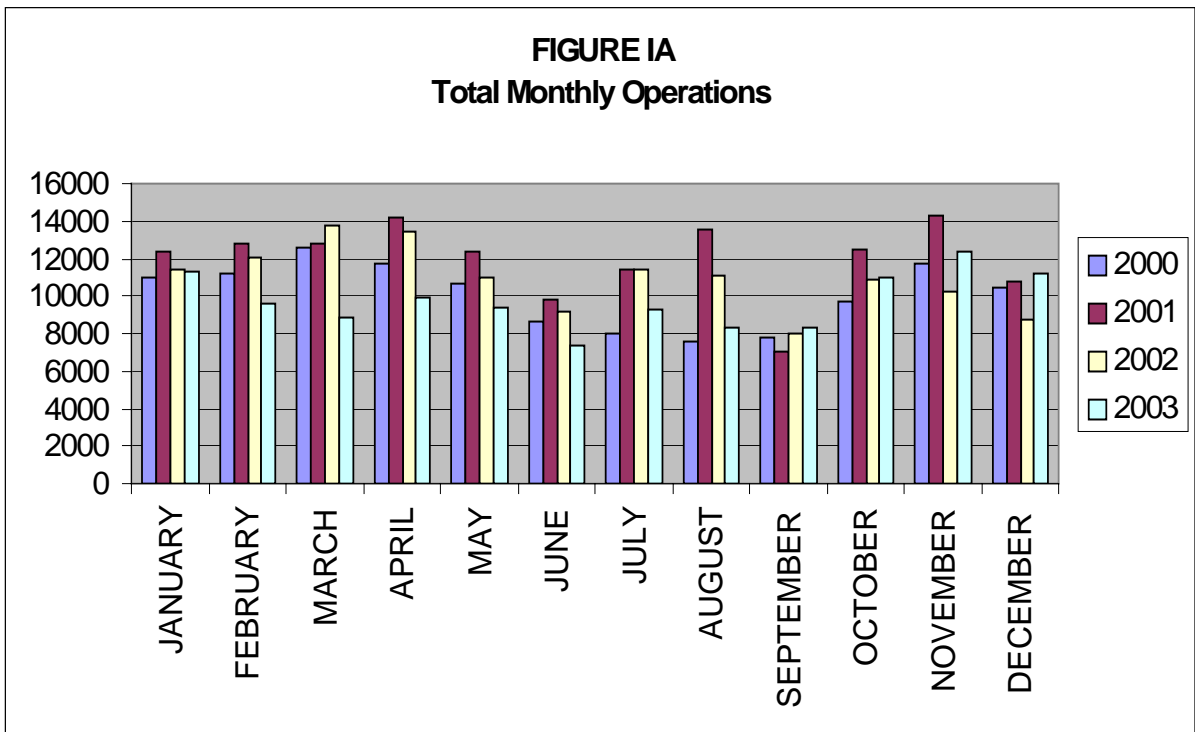
Compared to the same period last year, commuter traffic has decreased 24%, and general aviation air traffic has increased 20%. Total air traffic operations increased by 16% from 29,841 operations to 34,454.

Table I

**AIRPORT TRAFFIC SUMMARY
Landings and Takeoffs
2002-2003**

YEAR	COMMUTER	GENERAL AVIATION	MILITARY	TOTAL TRAFFIC	DAILY AVERAGE
2002					
OCTOBER	831	10,005	2	10,838	350
NOVEMBER	1,183	9,027	5	10,215	341
DECEMBER	1,206	7,579	3	8,788	284
TOTALS FOR 4th QUARTER	3,220	26,611	10	29,841	325
2003					
JANUARY	1,323	10,008	18	11,349	366
FEBRUARY	1,489	8,142	10	9,641	344
MARCH	1,569	7,201	61	8,831	285
TOTALS FOR 1st QUARTER	4,381	25,351	89	29,821	332
APRIL	1,550	8,380	27	9,957	332
MAY	914	8,493	28	9,435	304
JUNE	484	6,856	3	7,343	245
TOTALS FOR 2nd QUARTER	2,948	23,729	58	26,735	294
JULY	321	8,921	21	9,263	299
AUGUST	299	8,035	5	8,339	269
SEPTEMBER	319	7,971	19	8,309	277
TOTALS FOR 3rd QUARTER	939	24,927	45	25,911	282
TOTALS FOR FY 2003	4,548	49,141	86	53,775	308
OCTOBER	603	10,336	35	10,974	354
NOVEMBER	951	11,355	16	12,322	410
DECEMBER	902	10,240	16	11,158	340
TOTALS FOR 4th QUARTER	2,456	31,931	67	34,454	368

Figure IA below illustrates the airport's month-by-month total operational levels for 2000, 2001, 2002 and 2003.



There was a 116% increase in overall airport operations during the Fourth Quarter of 2003, when compared to the same period in 2002.

Night Time Operations

Figure IB, below, illustrates the airport's total nighttime (10:00 PM – 7:00 AM) operational levels for 2000, 2001, 2002 and 2003.

Total nighttime operations have decreased 11% in the Fourth Quarter of 2003 when compared to the Fourth Quarter 2002 statistics. Jet operations occurring at night decreased by nineteen operations, from 220 operations during the 4th Quarter of 2002 to 201 during the 4th Quarter of 2003.

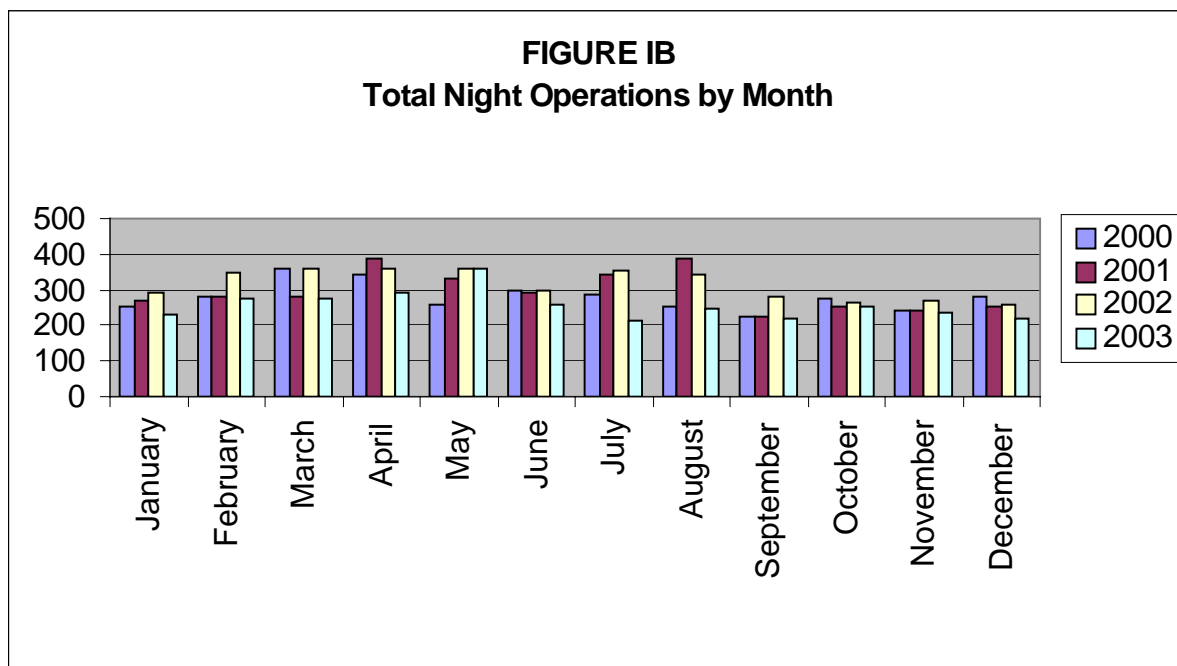


Table II, below, summarizes the types of nighttime operations occurring at the airport during the previous five quarters. Nighttime operations include voluntary curfew hours (10:00 PM through 7:00 AM). Reported nighttime operations have decreased by 86 total operations when compared to the same time last year.

As compared to the same time last year, the number of air ambulance operations has decreased by two (2) operations. Single and multi-engine aircraft operations have decreased by 23%. The Public service operations represent 22% of the activity occurring at night.

Table II
Quarterly Air Traffic Nighttime Operations Summary – by Calendar Year

Activity	4 th 2002	1 st 2003	2 nd 2003	3 rd 2003	4 th 2003
Jets	218	255	178	93	201
Jet – Air Ambulance	2	4	0	0	0
Single & Multi-engine	453	441	472	334	349
Mosquito Control Aircraft	15	5	115	135	46
Helicopters Collier S.O., EMS & Coast Guard	107	82	144	117	113
Total	795	787	909	679	709

PART II CITIZEN COMPLAINTS

Table III, on page 7, is a summary of citizen noise complaints separated according to four geographical areas (Quadrants). Below is a sample representation of the neighborhoods in each Quadrant. Every neighborhood in the area is not included in this list, although it is included in the Quadrant total.

Northeast Quadrant - Briarwood, Coconut River Estates, Golden Gate, Grey Oaks, Hawks Ridge, Wyndemere, and surrounding northeast areas.

Northwest Quadrant - Bears Paw, Coconut River Estates, Coquina Sands, Country Club of Naples, Lake Forest, Lake Park, Park Shore, Ridge Lakes, River Estates, River Reach, Sun Terrace, Moorings, Wilderness, and surrounding northwest areas.

Southwest Quadrant - Aqualane Shores, Old Naples, Port Royal, Royal Harbor, and surrounding southwest neighborhoods.

Southeast Quadrant - Brookside, Coconut Grove, Flamingo Estates, Foxfire, Kings Lake, Lakewood, Naples Gardens, Rock Creek Campground, The Glades, and surrounding neighborhoods.

The analysis will include the specific nature of the complaint, whether it was an arriving or departing aircraft or an overflight. Complaints relative to nighttime Mosquito Control operations, Air Ambulance Flights, Sheriff's Office and EMS helicopter operations are included in this report.

This Quarter Compared to Previous Quarter

This quarter's noise complaints, compared to the previous quarter, have increased from 24 to 82. Complaints received from neighborhoods to the northeast of the airport have decreased by 1, from the northwest remained the same, from the southeast they have increased by 16, and from the southwest increased by 41.

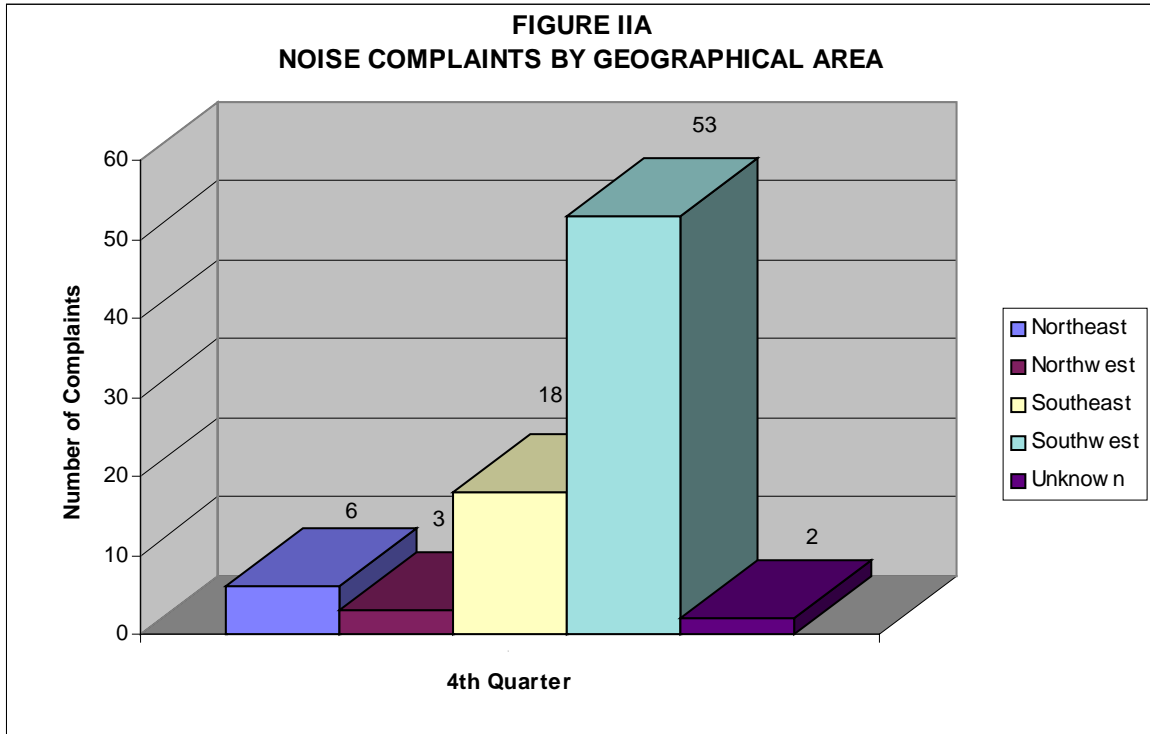
This Quarter Compared to the Same Period One Year Ago

Compared to the same period last year, the total number of complaints decreased by 15 calls. Complaints received from neighborhoods to the northeast of the airport have decreased by 10, from the northwest decreased by 1, from the southeast increased by 4, from the southwest decreased by 7, and unknown location complaints decreased by 1. Total complaints received have decreased from 97 to 82.

Table III
AIRPORT NOISE COMPLAINT SUMMARY
2002-2003

YEAR	Northeast	Northwest	Southeast	Southwest	Unknown Location	Monthly Total
2002						
OCTOBER	4	-	4	11	-	19
NOVEMBER	10	2	6	29	-	47
DECEMBER	2	2	4	20	3	31
TOTALS FOR 4th QUARTER	16	4	14	60	3	97
2003						
JANUARY	-	1	5	23	-	29
FEBRUARY	1	12	8	30	-	51
MARCH	1	2	1	26	2	32
TOTALS FOR 1ST QUARTER	2	15	14	79	2	112
APRIL	2	2	1	20	-	25
MAY	2	2	1	10	-	15
JUNE	-	1	2	4	-	7
TOTALS FOR 2nd QUARTER	4	5	4	34	-	47
JULY	2	-	1	-	-	3
AUGUST	1	-	-	4	-	5
SEPTEMBER	4	3	1	8	-	16
TOTALS FOR 3rd QUARTER	7	3	2	12	-	24
TOTALS FOR FY 2003	29	27	34	185	-	280
OCTOBER	-	1	8	11	2	22
NOVEMBER	6	-	2	21	-	29
DECEMBER	-	2	8	21	-	31
TOTALS FOR 4th QUARTER	6	3	18	53	2	82

Figure IIA, below, graphically compares the noise complaints received by geographical areas based on data collected during the Fourth Quarter of 2003. Total complaints for this quarter have increased 71% from the previous quarter, and decreased 16% when compared to the same period one year ago.



PART III COMPLAINTS BY TIMEFRAME

Figure IIIA, below, depicts noise complaints for the Fourth Quarter according to the time of the single event. Most complaints were received about operations occurring in the early afternoon through early evening (69%). Also, seventeen percent (17%) of the total complaints were received during the voluntary curfew hours.

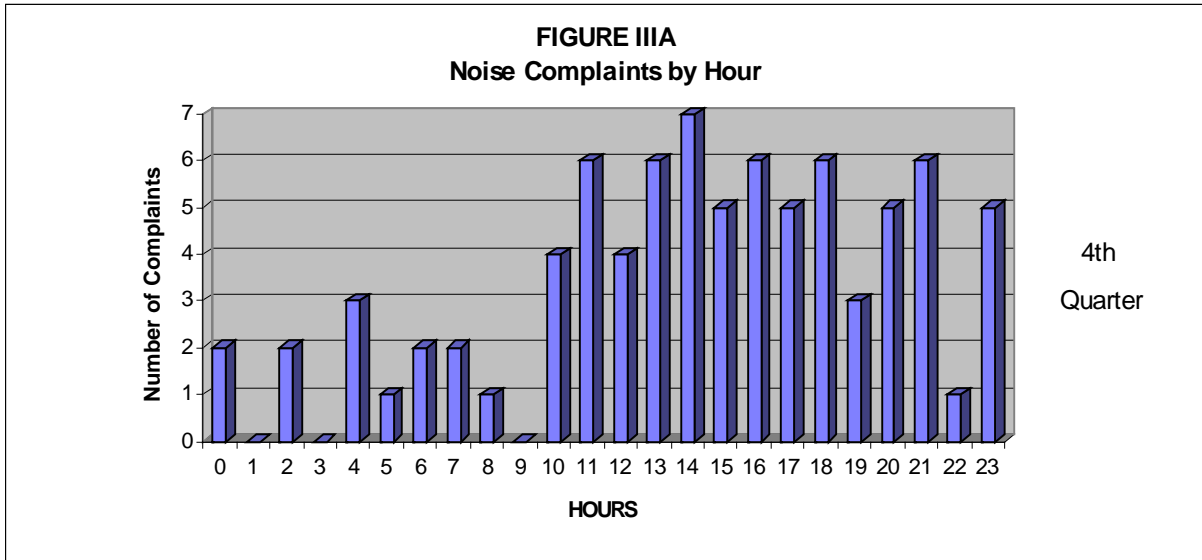
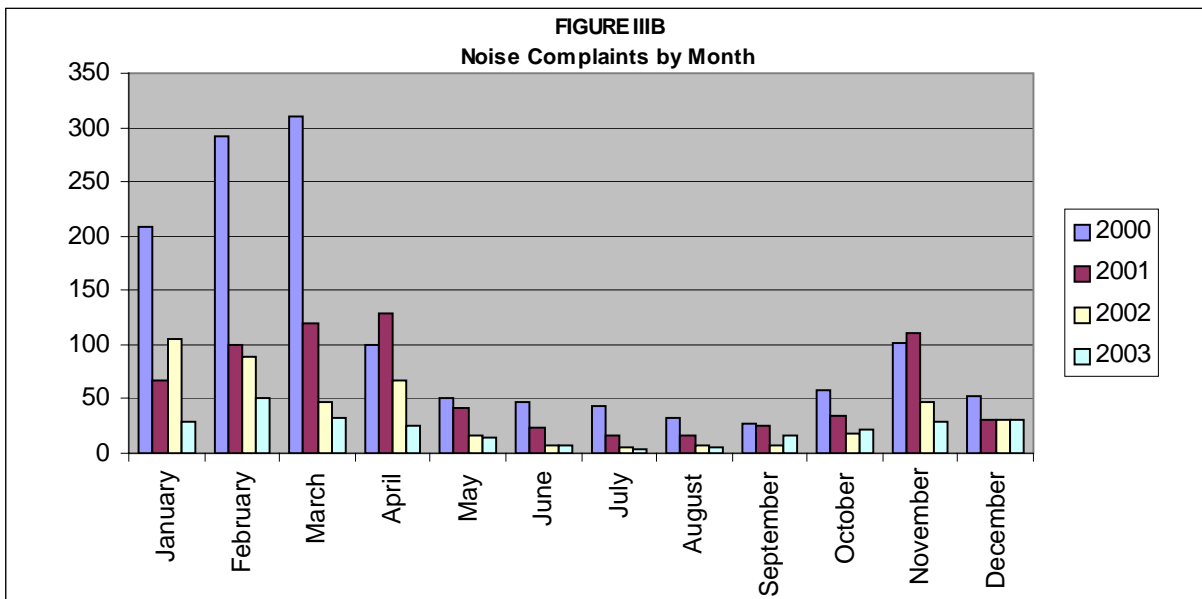
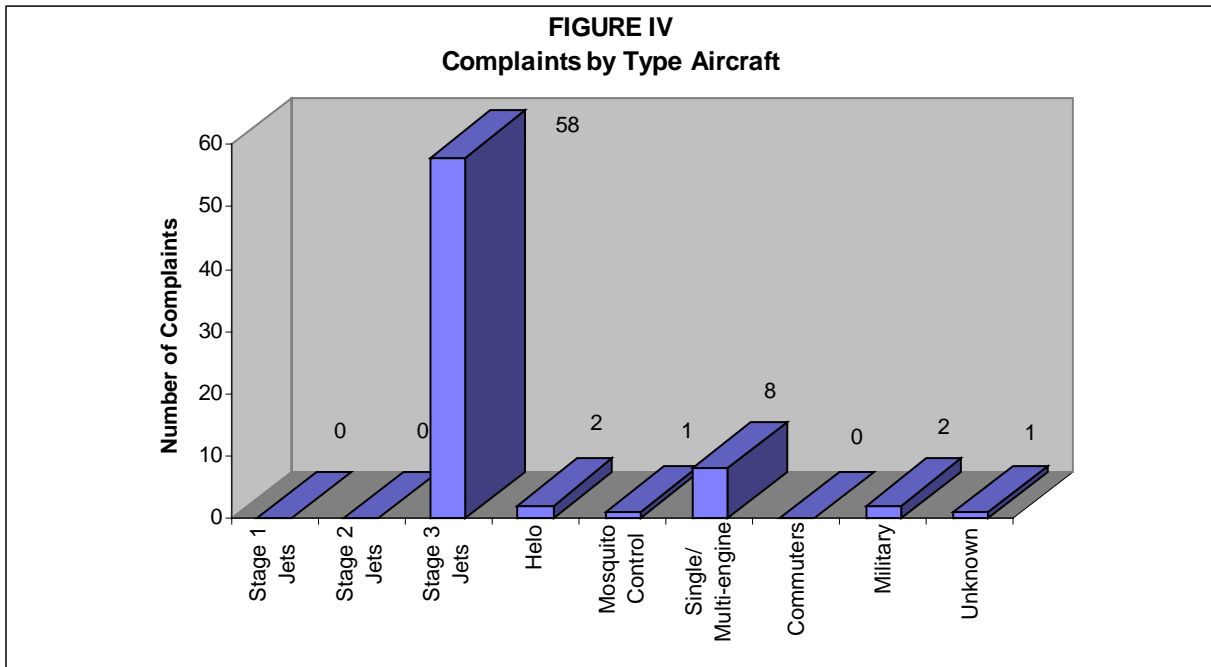


Figure IIIB below, illustrates the airport's complaint volume for 2000, 2001, 2002 and 2003.



PART IV COMPLAINTS BY OPERATIONAL SOURCE

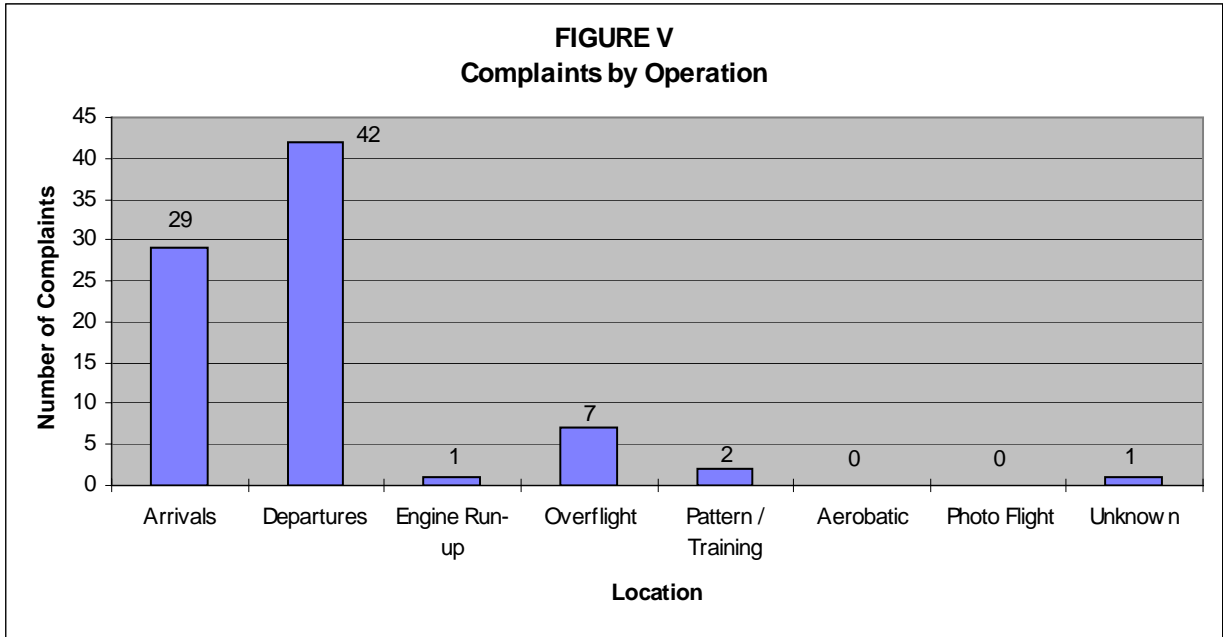
Figure IV below, indicates what types of aircraft the complainants were calling about. When comparing the last three (3) quarters noise complaints, it appears the complaints have remained relatively the same in regards to jet aircraft operations.



Staff received nine (9) complaints from Stage 2 Air Ambulances and one (1) complaint from a Stage 3 Air Ambulance during the Forth Quarter of 2003.

PART V
COMPLAINTS BY OPERATION

Figure V, below, shows the operational source of the noise complaints from the Forth Quarter of 2003.



SUMMARY

Air Traffic

Compared to the previous quarter, commuter traffic has increased 162%, general aviation traffic has increased by 28%, and total air traffic has increased by 33%. Compared to the same period one year ago, commuter traffic decreased 24%, general aviation operations have increased by 20%, and total traffic has increased 16%.

Sixteen percent (16%) of the total nighttime operations were attributed to Sheriff's Office or Emergency Services helicopters, and jet aircraft operations have decreased by nineteen (19) operations when compared to same period last year. Single and multi-engine operations have decreased by 23%, while Mosquito Control operations have increased by 206%. Overall nighttime operations have decreased by 11% when compared to last year.

Noise Complaints

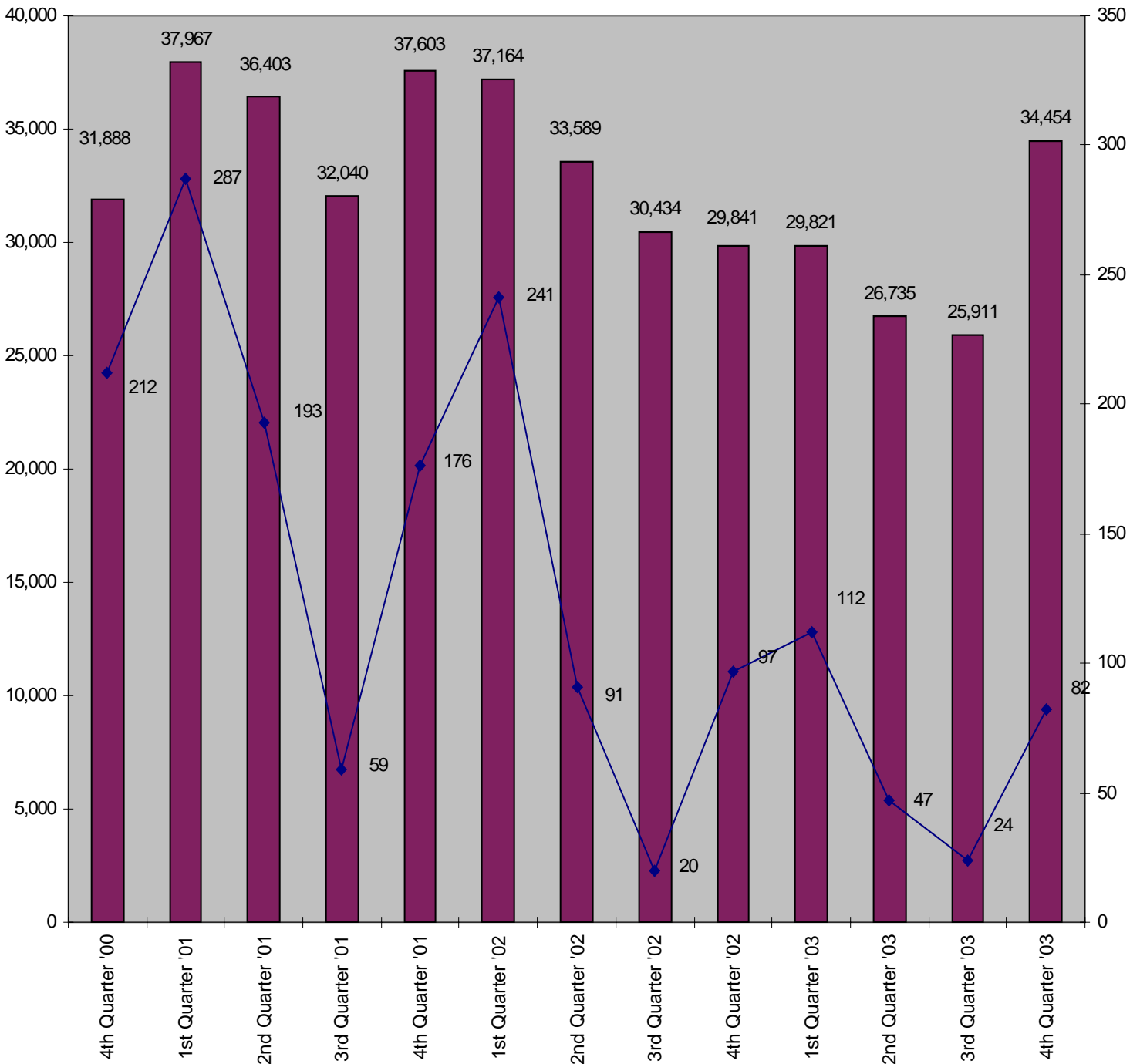
Compared to the previous quarter, noise complaints have increased from 24 to 82. Southwest Quadrant neighborhoods generated the most complaints during the Fourth Quarter of 2003, with a total of 53 complaints. Other areas generated the following number of complaints: Northeast-6, Northwest-3, Southeast-18 and Unknown-2.

Noise Complaints by Family

Thirty-one (31) different families made 82 complaints to the Noise Abatement Office during the Fourth Quarter of 2003. Four families made 44 calls, or 54% of the total complaints.

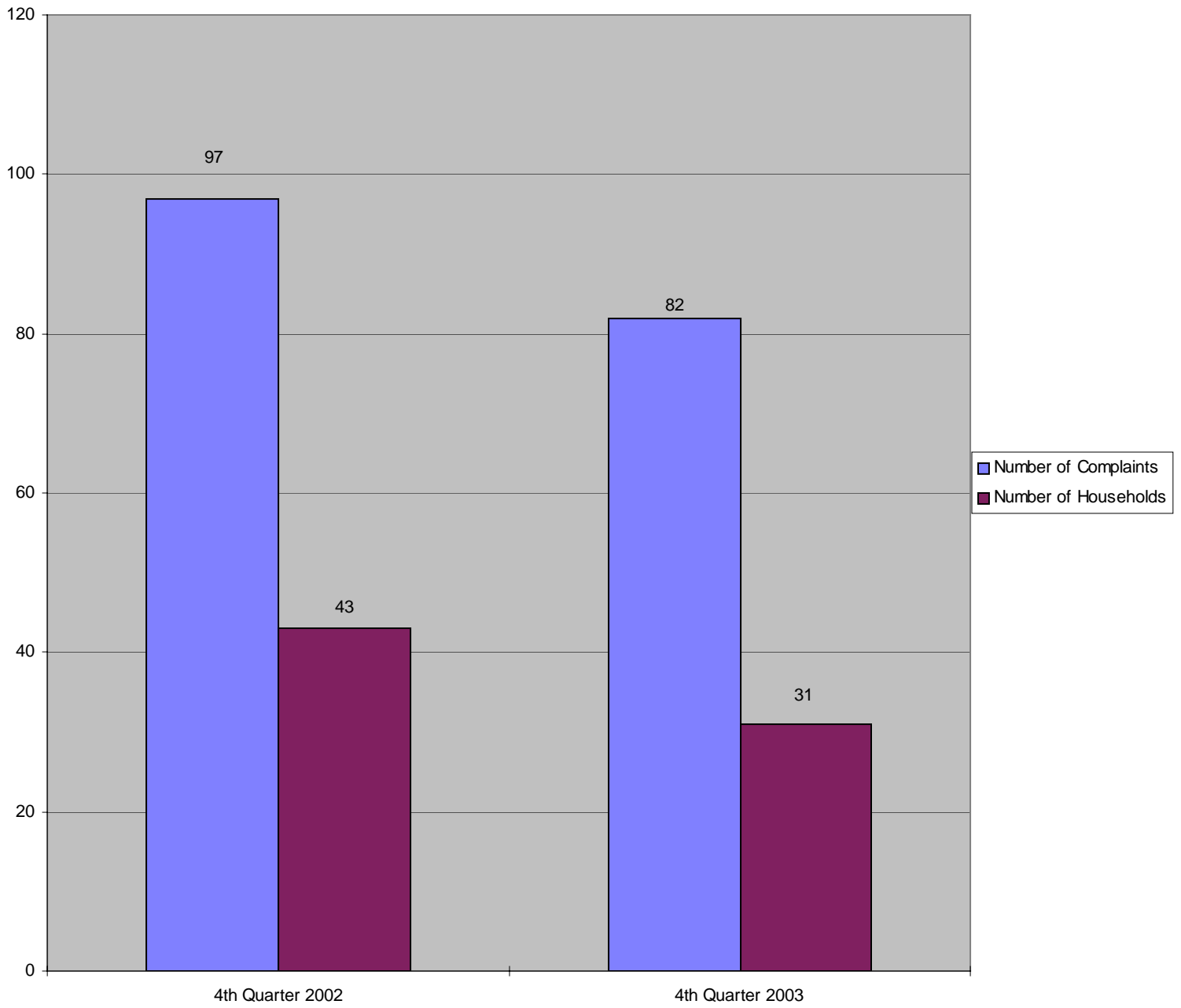
Total Aircraft Operations and Complaints

■ OPERATIONS
◆ COMPLAINTS



Appendix A

4th QUARTER
Number of Complaints vs. Number of Households



NOISE COMPLAINTS & OPERATIONS SUMMARY

APPENDIX C

MONTH: October 2003

DATE	7 AM - 10 PM								10 PM - 7 AM								TOTAL OPERATIONS	
	JET+HELO+PROP			JET OPS					JET+HELO+PROP			JET OPS						
	EVENTS	COMPLAINTS	OPERATIONS	TOTAL STAGE 1 OPERATIONS	TOTAL STAGE 2 OPERATIONS	AA STAGE 1 (EXEMPT)	AA STAGE 2 (EXEMPT)	AA STAGE 3 OPERATIONS	EVENTS	COMPLAINTS	OPERATIONS	TOTAL STAGE 1 OPERATIONS	TOTAL STAGE 2 OPERATIONS	AA STAGE 1 (EXEMPT)	AA STAGE 2 (EXEMPT)	AA STAGE 3 OPERATIONS		STAGE 3 OPERATIONS
Wed-01			207								6						3	213
Thur-02			300								9						1	309
Fri-03			370								9						2	379
Sat-04	1	1	423					2			5							428
Sun-05			336								4						2	340
Mon-06			327								5						2	332
Tue-07			294								5						1	299
Wed-08	1	1	308								10						6	318
Thur-09	1	1	355								8						1	363
Fri-10			305								12						6	317
Sat-11			246								10							256
Sun-12	1	1	399								10						2	409
Mon-13			356								4						3	360
Tue-14			288					2			7							295
Wed-15			318								7						2	325
Thur-16			348								3							351
Fri-17			258								11						3	269
Sat-18			434								17						3	451
Sun-19	2	2	410								7						1	417
Mon-20	1	1	458								4						2	462
Tue-21	3	3	346					2			3							349
Wed-22			250								5						2	255
Thu-23	2	2	307						2	3	9						3	316
Fri-24	1	1	404								9						2	413
Sat-25	1	1	374					2			13						1	387
Sun-26			407								9						2	416
Mon-27			397								15							412
Tue-28	1	1	319								3							322
Wed-29	2	2	398								9						2	407
Thu-30			391						1	1	12						1	403
Fri-31			388						1	1	13						1	401
TOTALS	17	17	10,721	0	0	0	4	4	4	5	253	0	0	0	0	0	54	10,974

COMPLAINTS			
	DAY	NIGHT	TOTAL
Events	17	4	21
Complaints	17	5	22
Operations (Ops)	10,721	253	10,974
%Events/Ops	0.2%	1.6%	0.2%
Complaints & Events	10	13	10
%Complaints / Ops	0.2%	2.0%	0.2%

NIGHT OPERATIONS	
Air Ambulance (AA)	J 0
EMS	H 17
Sheriff's Office	H 23
Mosquito Control	H 8
Mosquito Control	P 36
Public Service	J,H,P 84
Air Carrier & GA [Other]	H,P 115
Jet Operations	J 54
Night Ops - Total	J,H,P 253

RESTRICTIONS		Violations	Letters
Mandatory Restriction (MR)			
Runups: Maintenance		0	0
Jet Stage 1 day & night Ops		0	0
Jet Stage 2 day & night Ops		0	0
Voluntary Restriction (VR)			
Jet Stage 3 night Ops		2	2

NOISE COMPLAINTS & OPERATIONS SUMMARY

APPENDIX C

MONTH: November 2003

DATE	7 AM - 10 PM							10 PM - 7 AM							TOTAL OPERATIONS			
	JET+HELO+PROP			JET OPS				JET+HELO+PROP			JET OPS							
	EVENTS	COMPLAINTS	OPERATIONS	TOTAL STAGE 1 OPERATIONS	TOTAL STAGE 2 OPERATIONS	AA STAGE 1 (EXEMPT)	AA STAGE 2 (EXEMPT)	AA STAGE 3 OPERATIONS	EVENTS	COMPLAINTS	OPERATIONS	TOTAL STAGE 1 OPERATIONS	TOTAL STAGE 2 OPERATIONS	AA STAGE 1 (EXEMPT)		AA STAGE 2 (EXEMPT)	AA STAGE 3 OPERATIONS	STAGE 3 OPERATIONS
Sat-01	1	1	399							9							2	408
Sun-02	1	1	418							2							1	420
Mon-03			247							7							3	254
Tue-04			271							3							3	274
Wed-05	1	1	286							2							1	288
Thu-06			269							2							1	271
Fri-07			469							11							1	480
Sat-08			356							4							1	360
Sun-09			364							1								365
Mon-10	1	2	372							8							1	380
Tue-11	1	3	430							9							5	439
Wed-12			385							4							1	389
Thu-13	3	3	371							16							9	387
Fri-14	1	1	540						1	2	22						11	562
Sat-15	2	3	484							12							2	496
Sun-16			509							4							1	513
Mon-17			385							5							1	390
Tue-18			415							3							1	418
Wed-19	1	1	239						2	2	18						6	257
Thu-20			532							10								542
Fri-21	1	1	568							12							3	580
Sat-22			397							6							2	403
Sun-23	1	1	488							8							2	496
Mon-24	1	1	505						1	1	15						11	520
Tue-25	3	3	569							15							10	584
Wed-26			561							7							2	568
Thu-27			158						2	2	5						2	163
Fri-28			291							3								294
Sat-29			367							4							3	371
Sun-30			442							8							2	450
TOTALS	18	22	12,087	0	0	0	8	4	6	7	235	0	0	0	0	0	88	12,322

COMPLAINTS / COMMENTS			
	DAY	NIGHT	TOTAL
Events	18	6	24
Complaints	22	7	29
Operations (Ops)	12,087	235	12,322
%Events/Ops	0.1%	2.6%	0.2%
Complaints & Events	12	12	12
% Complaints / Ops	0.2%	3.0%	0.2%

NIGHT OPERATIONS		
Air Ambulance (AA)	J	0
EMS	H	16
Sheriff's Office	H	16
Mosquito Control	H	2
Mosquito Control	P	0
Public Service	J,H,P	34
Air Carrier & GA [Other]	H,P	113
Jet Operations	J	88
Night Ops - Total	J,H,P	235

RESTRICTIONS		Violations	Letters
Mandatory Restriction (MR)			
Runups: Maintenance		0	0
Jet Stage 1 day & night Ops		0	0
Jet Stage 2 day & night Ops		0	0
Voluntary Restriction (VR)			
Jet Stage 3 night Ops		5	5

NOISE COMPLAINTS/COMMENTS & OPERATIONS SUMMARY

APPENDIX C

MONTH: December 2003

DATE	7 AM - 10 PM								10 PM - 7 AM								TOTAL OPERATIONS	
	JET+HELO+PROP			JET OPS					JET+HELO+PROP			JET OPS						
	EVENTS	COMPLAINTS / COMMENTS	OPERATIONS	TOTAL STAGE 1 OPERATIONS	TOTAL STAGE 2 OPERATIONS	AA STAGE 1 (EXEMPT)	AA STAGE 2 (EXEMPT)	AA STAGE 3 OPERATIONS	EVENTS	COMPLAINTS / COMMENTS	OPERATIONS	TOTAL STAGE 1 OPERATIONS	TOTAL STAGE 2 OPERATIONS	AA STAGE 1 (EXEMPT)	AA STAGE 2 (EXEMPT)	AA STAGE 3 OPERATIONS		STAGE 3 OPERATIONS
Mon-01			360								6						2	366
Tues-02			488								8						3	496
Wed-03			448								10						6	458
Thur-04	3	3	426								11							437
Fri-05	1	1	392								6							398
Sat-06			188								6						1	194
Sun-07			393								5						2	398
Mon-08			489								7						4	496
Tues-09			415								11						5	426
Wed-10			253								8						4	261
Thur-11	2	2	332						2	1	2	5					2	337
Fri-12	4	4	427						2			5						432
Sat-13	1	1	344						2			9					2	353
Sun-14			99									2						101
Mon-15	1	1	434						2			6					4	440
Tues-16			270						4			13					5	283
Wed-17	2	2	142									8					1	150
Thur-18	2	2	405							1	1	9					3	414
Fri-19			421									8					1	429
Sat-20	1	1	361									3					2	364
Sun-21	1	1	307									2						309
Mon-22	1	1	348									1						349
Tues-23	1	1	346									3						349
Wed-24			157									8					1	165
Thur-25			108									9						117
Fri-26	1	1	459									8					3	467
Sat-27			511									10					5	521
Sun-28	2	2	446							1	1	15					2	461
Mon-29	1	1	393							1	1	5					1	398
Tues-30	2	2	419									7						426
Wed - 31			356						4			7						363
TOTALS	26	26	10,937	0	0	0	10	8		4	5	221	0	0	0	0	59	11,158

COMPLAINTS / COMMENTS			
	DAY	NIGHT	TOTAL
Events	26	4	30
Complaints/Comments	26	5	31
Operations (Ops)	10,937	221	11,158
%Events/Ops	0.2%	1.8%	0.3%
Complaints/Comments & Events	1.0	1.3	1.0
% Complaints/Comments / Ops	0.2%	2.3%	0.3%

NIGHT OPERATIONS		
Air Ambulance (AA)	J	0
EMS	H	24
Sheriff's Office	H	17
Mosquito Control	H	0
Mosquito Control	P	0
Public Service	J,H,P	41
Air Carrier & GA [Other]	H,P	121
Jet Operations	J	59
Night Ops - Total	J,H,P	221

RESTRICTIONS		Violations	Letters
Mandatory Restriction (MR)			
Runups: Maintenance		0	0
Jet Stage 1 day & night Ops		0	0
Jet Stage 2 day & night Ops		0	0
Voluntary Restriction (VR)			
Jet Stage 3 night Ops		4	4

**RECURRING NOISE MONITORING PROGRAM RESULTS
OCTOBER 1 – DECEMBER 31, 2003**

The purpose of this program is to conduct recurring monitoring sessions at selected locations in the airport environs to assist the Naples Airport Authority in identifying any changes in patterns and levels of noise exposure from season to season and year to year. Section I provides a basic description of activity noted during the monitoring period. Section II provides an activity comparison between quarters and a seasonal year-to-year comparison. Section III includes the quarterly decibel levels measured each quarter and a map depicting the monitoring locations and results from the most current monitoring period.

This program includes the following goals:

- Provide an objective basis for identifying long-term changes in noise exposure to correlate the changes in activity levels, facilities, airline schedules, airport rules, etc.
- Provide an objective basis for identifying seasonal variation in noise exposure.
- Provide an objective basis for evaluating geographic variation in noise exposure.
- Provide the interested public with useful, understandable, geographically representative information on long-term noise exposure patterns.
- Address the preceding technical objectives in the most efficient manner possible.

Staff spent several hours at five of the six locations, *(see explanation below) specifically documenting aircraft operations and determining what other sources produce significant sound levels in the vicinity of the monitors. Every source will contribute to the overall DNL results, as these sources may be louder than aircraft operations. Any type of “exceedance” occurring during these monitoring periods was noted. An exceedance is an event caused by any type of source (car, aircraft, or siren) which triggers the noise monitor to begin recording an event. An exceedance is only recorded if it lasts greater than five (5) seconds, and is louder than the threshold set on the monitor. During this round of monitoring, all monitor thresholds were set at 60 decibels to get as close as possible to the ambient background noise level at each site.

*Staff was unable to noise monitor at one of the sites due to the monitor being sent out for repair.

SECTION I – QUARTERLY SITE ACTIVITY SUMMARY

One of the six sites was not monitored during this quarter due to the monitor being sent out for repair. All other locations were monitored for approximately a ten day period, and staff were present at each location at least three times for various periods, noting exceedances, sound exposure levels *(SEL) of various types of aircraft and background noise levels. Staff has also been able to provide noise monitor briefings, as well as, information about noise issues at the airport. The following SEL's and overall background noise levels noted in Section III were verified by staff during the on-site visits.

* The Sound Exposure Level (SEL) is defined as a summation of the "A-weighted" sound energy over the duration of a noise event, where the duration is defined as the time when the sound level first exceeds a threshold level (in this case its 60 dB) to the time that the sound level drops back down below the threshold. This energy is then squeezed into a one-second interval and the resulting energy level is called the SEL.

Below is a representative list of Sound Exposure Level (SEL) observations made at three sites. The event duration was added to the table below because the duration of the event directly impacts the Sound Exposure Level.

Aircraft Arriving at Airport:

SITE / LOCATION	AIRCRAFT TYPE	SEL LEVEL	EVENT DURATION in seconds
Village Green / 1 ½ miles SW of airport	Twin Engine Cessna 421	78.2 decibels	14.78
Village Green / 1 ½ miles SW of airport	Twin Engine Seneca	80.9 decibels	22.67

Aircraft Departing Airport:

SITE / LOCATION	AIRCRAFT TYPE	SEL LEVEL	EVENT DURATION in seconds
Springwood / ½ mile SE of airport	Twin Engine Seneca	83.7 decibels	23.50
Springwood / ½ mile SE of airport	Twin Engine Commache	88.1 decibels	39.12
Springwood / ½ mile SE of airport	Single Engine Cessna	81.7 decibels	38.31
Wyndemere/ 2 1/4 miles NE of airport	Single Engine Cherokee	79.8 decibels	29.2
Wyndemere/ 2 1/4 miles NE of airport	Twin Engine Sencea	78.8 decibels	20.46
Wyndemere/ 2 1/4 miles NE of airport	Unknown Jet	75.9 decibels	16.87

SECTION II – SEASONAL AND ANNUAL COMPARISON OF SITES

Noise Monitoring Site Summary Comparison between the Third Quarter of 2003 and the Fourth Quarter of 2003, and a comparison between the same period last year.

A comparison of the five monitoring sites revealed that the DNL increased at two sites and decreased at two sites when compared to last quarter (data not available for one site for this comparison). The DNL increased at one site, decreased at three sites and remained the same at one site, when compared to same period last year (data not available for one site for this comparison). Below is a summary of each site. The changes in background noise are speculative unless staff observed changes in area construction levels, vehicular traffic or other activity. A more complete comparison is now available to compare the same time period on an annual basis, versus a seasonal basis.

The following guidelines may be helpful in interpreting community response to changes in DNL above 55 dB.

<u>Change in DNL</u>	<u>Community Response</u>
0 – 2 dB's	May be noticeable
2 – 5 dB's	Generally noticeable
Over 5 dB's	A change in community reaction is likely

Site 1 – The DNL appears to have decreased by 5.3 decibels during the Fourth Quarter. When compared to the same period last year the DNL has increased by 0.4 decibels. The background noise at this site has decreased by 2.5 decibel.

Site 2A – The DNL at this site was 59.1 decibels. This data is an increase of 1.3 decibels when compared to the previous quarter and when compared to the same period last year, there was a decrease of 0.4 decibels. Background noise level increased by 3.1 decibels.

Site 3 – This site was not monitored due to the noise monitor being sent out for repair.

Site 4 – The DNL at this site was 59.7 decibels, which is a 1.5-decibel decrease when compared to the same period last year. Comparison to the previous quarter is unavailable. Background noise level also decreased by 2.1 decibels.

Site 5 – This site produced a DNL of 51.0 decibels. This data is a decrease of 4.0 decibels when compared to the previous quarter and a decrease of 1.0 decibel when compared to the same period last year. The background noise level at this site has increased by 0.4 decibels when compared to the Fourth Quarter of 2002.

Site 6 – This site was removed from the list of noise monitoring sites.

Site 7 – The DNL at this site increased by 5.2 decibels. When compared to the same quarter last year there is a decrease of 1.0 decibel. There was an 11.0-decibel increase in background noise at this site when compared to the previous quarter, but only a 0.4-decibel increase when compared to the same period last year. Staff believes that the

increase in the background noise level, when compared to the previous quarter is due to the result of heavier traffic on Livingston Road during this time of year.

DNL Comparison			
Site	Fourth Quarter 2002	Third Quarter 2003	Fourth Quarter 2003
1	56.4 dB	62.1 dB	56.8 dB
2A	59.5 dB	57.8 dB	59.1 dB
3	55.2 dB	59.6 dB	N/A
4	61.2 dB	N/A	59.7 dB
5	51.0 dB	55.0 dB	51.0 dB
7	60.1 dB	53.9 dB	59.1 dB

**SECTION III
NOISE MONITORING SITE SUMMARY**

SITES	4th Quarter		1st Quarter		2nd Quarter		3rd Quarter		4th Quarter		
	Oct. - Dec., 2002		Jan. - Mar. 2003		Apr. - June 2003		July - Sept. 2003		Oct. - Dec., 2003		
	Bkgrnd	Total	Bkgrnd	Total	Bkgrnd	Total	Bkgrnd	Total	Bkgrnd	Total	
1	Springwood-East Naples	46.4	56.4	47.4	58	48.4	58.8	48.9	62.1	46.4	56.8
2A	Pulling Property	45	59.5	46.3	59.3	N/A	N/A	46.1	57.8	49.2	59.1
3	First Presbyterian Church - 6th St. South	45	55.2	46.4	60.3	46.9	59	47.4	59.6	N/A	N/A
4	Village Green - 11th Avenue South	48.5	61.2	N/A	N/A	N/A	N/A	N/A	N/A	46.4	59.7
5	The Conservancy	42.1	51	40.4	52.6	N/A	N/A	43.7	55	45.5	51
7	Wyndemere CC	48.6	60.1	45.5	61.9	45.3	56.6	38	53.9	49	59.1

Bkgrnd - The background noise level or the quietest level that would be experienced in the absence of most significant noise-producing human activity.

Total - Total noise as it occurs over a 24-hour period, adding a 10-decibel penalty to sound events occurring at night between the hours of 10:00 PM and 7:00 AM.