



CITY OF NAPLES AIRPORT AUTHORITY

QUARTERLY NOISE REPORT

NUMBER 42

For the period

April 1, 2007 through June 30, 2007

Prepared by the
Noise Abatement Office

TABLE OF CONTENTS

	Page
INTRODUCTION	1
PART I AIRCRAFT OPERATIONS	1
Table I	Airport Traffic Summary 2
Figure IA	Total Monthly Operations 3
Figure IB	Total Night Operations by Month 4
Table II	Quarterly Air Traffic Nighttime Operations Summary 5
Figure IC	Fiscal year Air Traffic Nighttime Operations 5
Table IIA	Fiscal Year Percentage of Nighttime Operations 6
PART II CITIZEN COMPLAINTS	7
Table III	Airport Noise Complaint Summary 8
Figure IIA	Noise Complaints by Geographical Area 9
PART III COMPLAINTS BY TIMEFRAME	10
Figure IIIA	Noise Complaints by Hour 10
Figure IIIB	Noise Complaints by Month 10
PART IV COMPLAINTS BY OPERATIONAL SOURCE	11
Figure IVA	Complaints by Type Aircraft 11
Figure IVB	Air Ambulance Operations & Complaints 11
PART V COMPLAINTS BY OPERATION AND NATURE OF DISTURBANCE	12
Figure V	Complaints by Operations 12
Figure VI	Complaints by Nature of Disturbance 12
SUMMARY	13
Appendix A	Total Aircraft Operations and Complaints
Appendix B	Noise Complaints vs. Number of Households
Appendix C	Noise Complaint / Operations Summary (April/May/June)

PART I AIRCRAFT OPERATIONS

INTRODUCTION

This is the forty-second Quarterly Noise Report prepared by the City of Naples Airport Authority - Noise Abatement Office. This report is informational in nature. The data included in this report tracks aircraft operations and noise complaints. The information contained in this report is fiscal year (Oct. – Sept.). All percentages are rounded to the nearest percent.

AIRCRAFT OPERATIONS

Table I, page 2, Airport Traffic Summary, contains aircraft movement data from FAA Form 7230-1 and after hour statistics recorded by the City of Naples Airport Authority Security Officers. Naples Air Traffic Control Tower is operational from 6:00 AM through 10:00 PM. A single movement represents either one arrival or one departure by the indicated aircraft category.

This Quarter Compared to Previous Quarter

Compared to the previous quarter, air carrier traffic has decreased by 31%; general aviation activity has decreased by 14% and total traffic decreased by 16%, from 38,665 operations to 32,547. The daily average for the Third Quarter was 358 operations.

This Quarter Compared to the Same Period One Year Ago

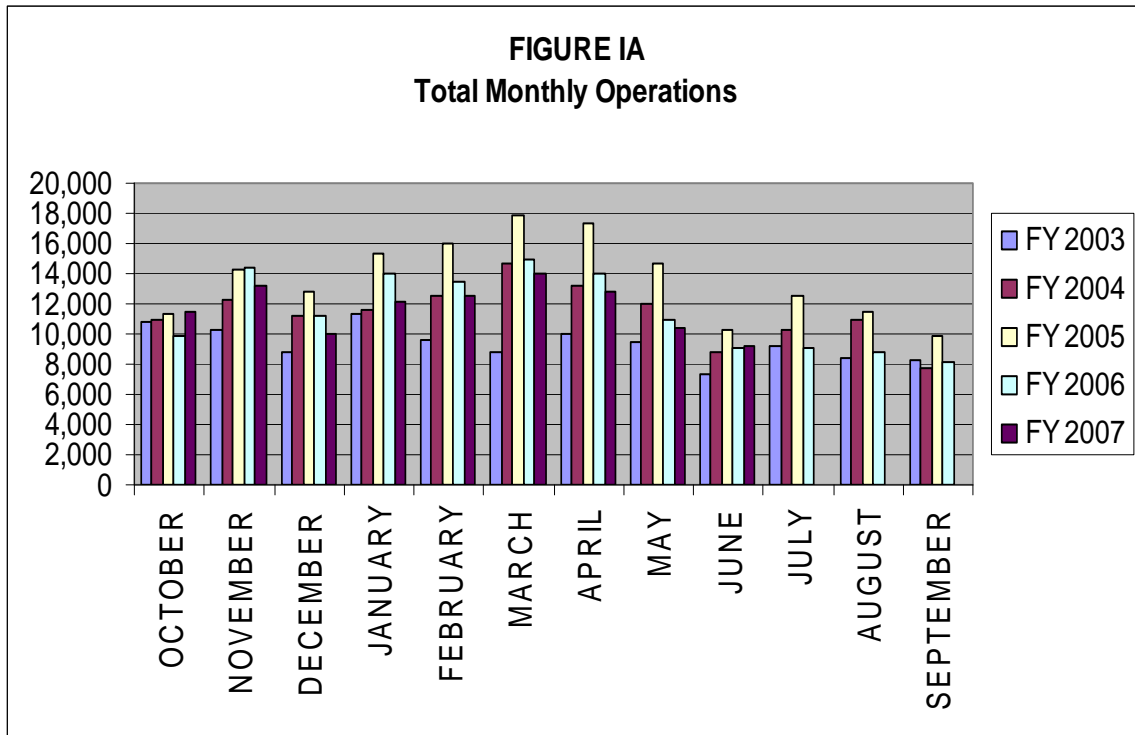
Compared to the same period last year, air carrier traffic has increased by 3% and general aviation air traffic has decreased 5%. Total air traffic operations decreased by 4% from 34,075 operations to 32,547.

Table I

AIRPORT TRAFFIC SUMMARY
Landings and Takeoffs
Fiscal Years 2006-2007

YEAR	AIR CARRIER	GENERAL AVIATION	MILITARY	TOTAL TRAFFIC	DAILY AVERAGE
2006					
APRIL	1,352	12,685	4	14,041	468
MAY	894	10,020	-	10,914	352
JUNE	613	8,507	-	9,120	304
TOTALS FOR 3rd QUARTER	2,859	31,212	4	34,075	375
JULY	467	8,551	28	9,046	292
AUGUST	492	8,338	8	8,838	285
SEPTEMBER	477	7,622	4	8,103	270
TOTALS FOR 4th QUARTER	1,436	24,511	40	25,987	282
TOTALS FOR FY06	12,371	125,423	114	137,908	379
2007					
OCTOBER	702	10,786	6	11,494	371
NOVEMBER	1,166	12,070	9	13,245	442
DECEMBER	1,070	8,960	6	10,036	324
TOTALS FOR 1st QUARTER	2,938	31,816	21	34,775	379
JANUARY	1,286	10,902	10	12,198	393
FEBRUARY	1,449	11,068	6	12,523	447
MARCH	1,538	12,392	4	13,934	450
TOTALS FOR 2nd QUARTER	4,273	34,362	20	38,655	430
APRIL	1,431	11,422	4	12,857	429
MAY	990	9,451	1	10,442	337
JUNE	536	8,708	4	9,248	308
TOTALS FOR 3rd QUARTER	2,957	29,581	9	32,547	358

Figure IA below illustrates the airport's month-by-month total operational levels for fiscal years 2003, 2004, 2005, 2006 and 2007.



There was a 4% decrease in overall airport operations during the Third Quarter of 2007, when compared to the same period in 2006.

Night Time Operations

Figure IB, below, illustrates the airport's total nighttime (10:00 PM – 7:00 AM) operational levels for fiscal year 2003, 2004, 2005, 2006 and 2007.

Total nighttime operations have decreased by one percent (1%) in the Third Quarter of 2007 when compared to the Third Quarter 2006 statistics. Jet operations occurring at night decreased by 96 operations and single and multi-engine aircraft operations increased by 34.

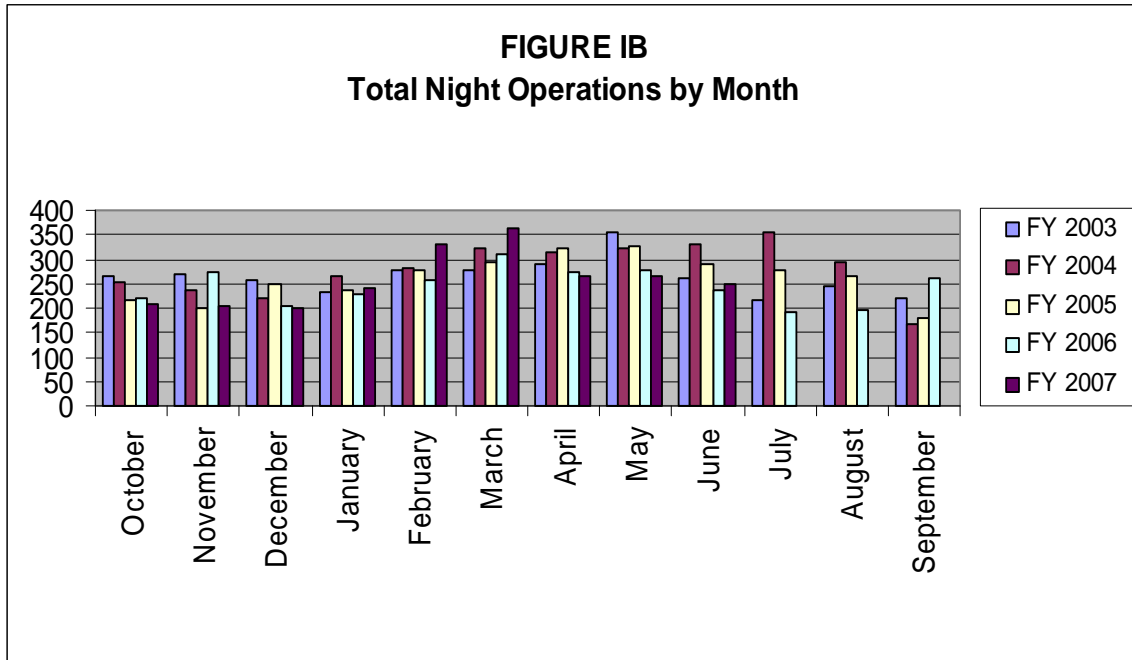


Table II, below, summarizes the types of nighttime operations occurring at the airport during the previous five quarters. Nighttime operations include voluntary curfew hours (10:00 PM through 7:00 AM). Reported nighttime operations have decreased by 1% when compared to the same time last year. Air carrier operations have had a significant reduction of ninety-two percent (92%). General aviation jet traffic has decreased by of ten percent (10%) and single and multi-engine aircraft operations have increased by ten percent (10%).

Public Service operations represent 30% of the activity occurring at night and have increased thirty percent (30%) when compared to the same period last year. Nighttime operations accounted for two percent (2%) of the overall operations for the Third Quarter of 2007.

Table II
Quarterly Air Traffic Nighttime Operations Summary – by Fiscal Year

Activity	3 rd 2006	4 th 2006	1 st 2007	2 nd 2007	3 rd 2007
Jets					
Air Ambulance	2	3	5	5	3
Air Carrier	85	64	76	10	7
GA	181	72	153	343	162
Subtotal Jets	268	139	234	358	172
Single & Multi-engine (includes air carrier & GA)	345	314	249	409	379
Public Service					
Mosquito Control Operations	22	74	10	2	50
Collier Sheriff's Office	121	110	109	136	161
EMS	35	10	12	33	21
Coast Guard	0	0	0	0	0
Subtotal Public Service	178	194	131	171	232
Total	791	647	614	938	783

Figure IC, below, illustrates the airport's total nighttime (10:00 PM – 7:00 AM) operational levels for fiscal years 2001 through 2006.

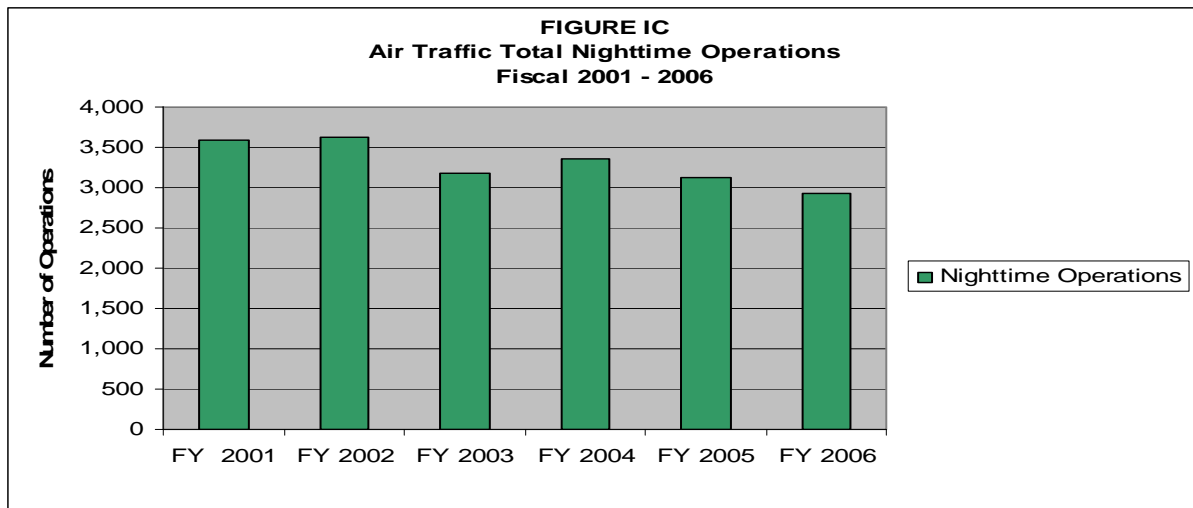


Table II A, depicts the percentage of nighttime operations as compared to total operations for the last five fiscal years. Night operations represent three percent (3%) for FY 02 – 03 and two percent (2%) of the total operations for FY 04, FY 05 and FY 06. This is a one percent (1%) decrease when compared to FY 02 – 03.

Table II A
Fiscal Year Percentage of Nighttime Operations

Fiscal Year	Total Operations	Night Operations	% of Night Ops	% of Jet Night Ops
2002	138,790	3,626	3%	21%
2003	112,308	3,170	3%	23%
2004	136,128	3,361	2%	23%
2005	163,434	3,130	2%	34%*
2006	137,908	2,935	2%	38%*

* Delta began CRJ service in FY05. They had 328 nighttime operations in FY 05 and 352 nighttime operations in FY 06. Without Delta's operations, the percentage of jet night operations in FY05 would have been twenty-four percent (24%) of the total nighttime operations and twenty-six percent (26%) of the total in FY 06.

PART II CITIZEN COMPLAINTS

Table III, on page 8, is a summary of citizen noise complaints separated according to four geographical areas (Quadrants). Below is a sample representation of the neighborhoods in each Quadrant. Every neighborhood in the area is not included in this list, although it is included in the Quadrant total.

Northeast Quadrant - Briarwood, Coconut River Estates, Golden Gate, Grey Oaks, Hawks Ridge, Wyndemere, and surrounding northeast areas.

Northwest Quadrant - Bears Paw, Coconut River Estates, Coquina Sands, Country Club of Naples, Lake Forest, Lake Park, Park Shore, Ridge Lakes, River Estates, River Reach, Sun Terrace, Moorings, Wilderness, and surrounding northwest areas.

Southwest Quadrant - Aqualane Shores, Old Naples, Port Royal, Royal Harbor, and surrounding southwest neighborhoods.

Southeast Quadrant - Brookside, Coconut Grove, Flamingo Estates, Foxfire, Kings Lake, Lakewood, Naples Gardens, Rock Creek Campground, The Glades, and surrounding neighborhoods.

The analysis will include the specific nature of the complaint, whether it was an arriving or departing aircraft or an overflight. Complaints relative to nighttime Mosquito Control operations, Air Ambulance Flights, Sheriff's Office and EMS helicopter operations are included in this report.

This Quarter Compared to Previous Quarter

This quarter's noise complaints, compared to the previous quarter, have decreased from 555 to 88. Complaints received from neighborhoods to the northeast of the airport have decreased by 425, from the northwest they have decreased by 4, from the southeast they have increased by 9, from the southwest decreased by 45 and unknown decreased by 2.

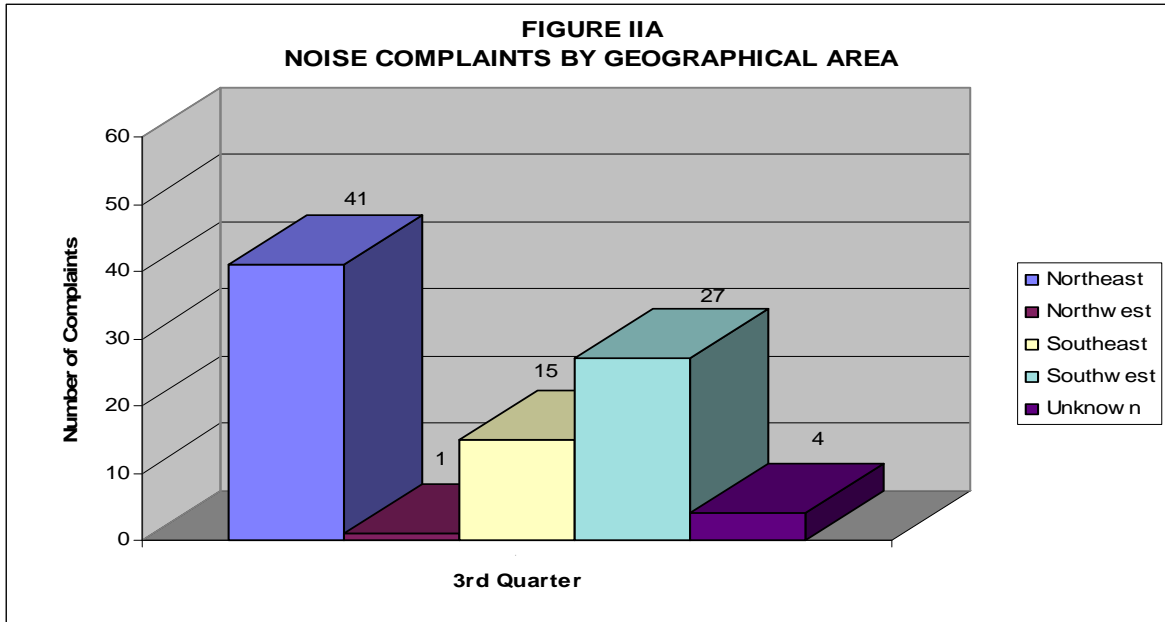
This Quarter Compared to the Same Period One Year Ago

Compared to the same period last year, the total number of complaints decreased by 78 calls. Complaints received from neighborhoods to the northeast of the airport have increased by 14, from the northwest they have decreased by 1, from the southeast increased by 12, from the southwest decreased by 106 and unknown increased by 3. Total complaints received have decreased from 166 to 88.

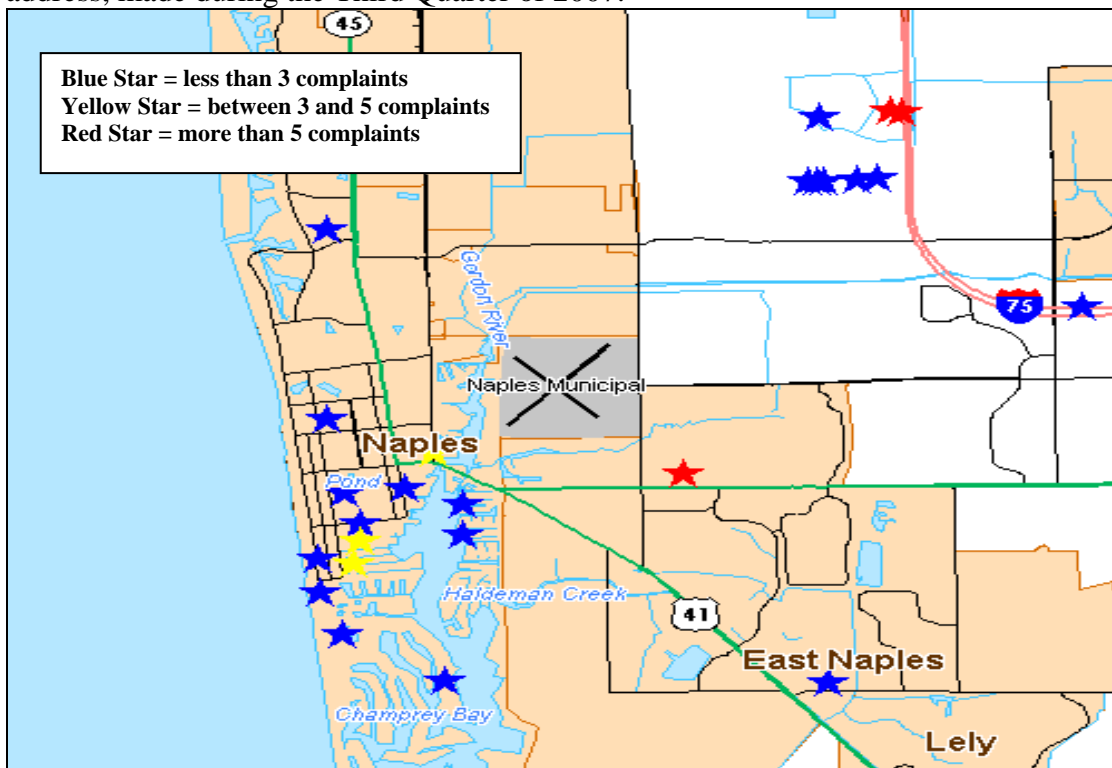
Table III
AIRPORT NOISE COMPLAINT SUMMARY
Fiscal Years 2006-2007

YEAR	Northeast	Northwest	Southeast	Southwest	Unknown Location	Monthly Total
2006						
APRIL	12	1	3	116		132
MAY	14	1	-	15	1	31
JUNE	1			2		3
TOTALS FOR 3rd QUARTER	27	2	3	133	1	166
JULY			1	2	1	4
AUGUST	1			1		2
SEPTEMBER	1				1	2
TOTALS FOR 4th QUARTER	2	-	1	3	2	8
TOTALS FOR FY06	46	20	20	261	4	351
2007						
OCTOBER	9	-	-	11	2	22
NOVEMBER	120	2	7	18	-	147
DECEMBER	76	-	5	8	2	91
TOTALS FOR 1st QUARTER	205	2	12	37	4	260
JANUARY	274	5	4	14	2	299
FEBRUARY	164	-	1	29	3	197
MARCH	28	-	1	29	1	59
TOTALS FOR 2nd QUARTER	466	5	6	72	6	555
APRIL	23	-	14	12	-	49
MAY	12	1	-	12	4	29
JUNE	6	-	1	3	-	10
TOTALS FOR 3rd QUARTER	41	1	15	27	4	88

Figure IIA, below, graphically compares the noise complaints received by geographical areas based on data collected during the Third Quarter of 2007. Total complaints for this quarter have decreased by seventy-eight (78) when compared to the same period one year ago.



The newly added map below shows the location of the complainants that provided an address, made during the Third Quarter of 2007.



PART III COMPLAINTS BY TIMEFRAME

Figure IIIA, below, depicts noise complaints for the Third Quarter according to the time of the single event. Most complaints were received about operations occurring between 11:00 AM - 1:00 PM (22%) and 5:00 PM – 7:00 PM (24%). Twenty-four percent (24%) of the total complaints were received during the voluntary curfew hours.

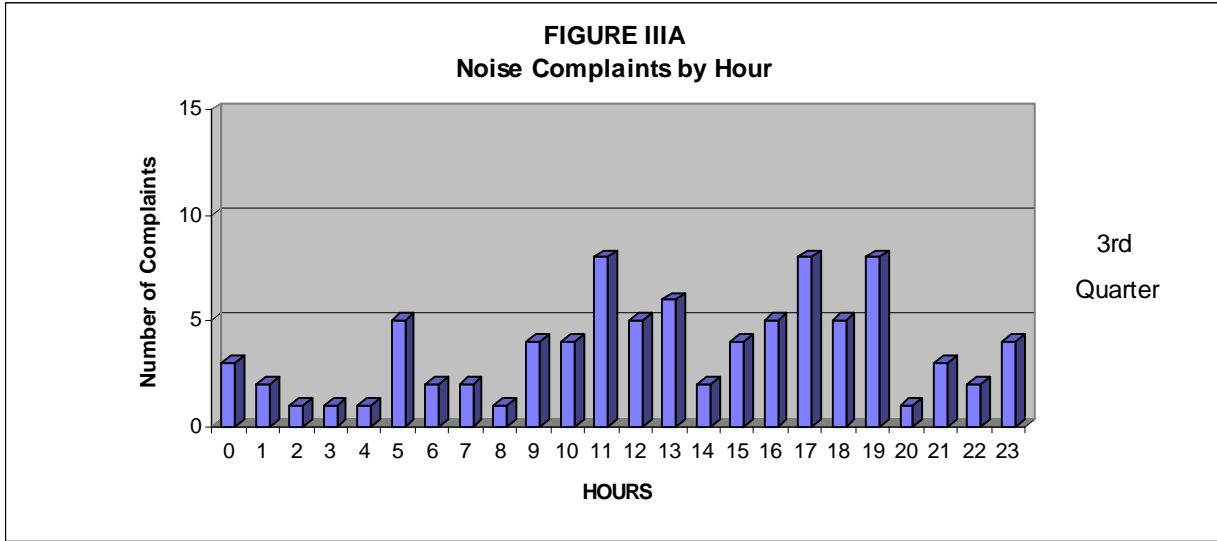
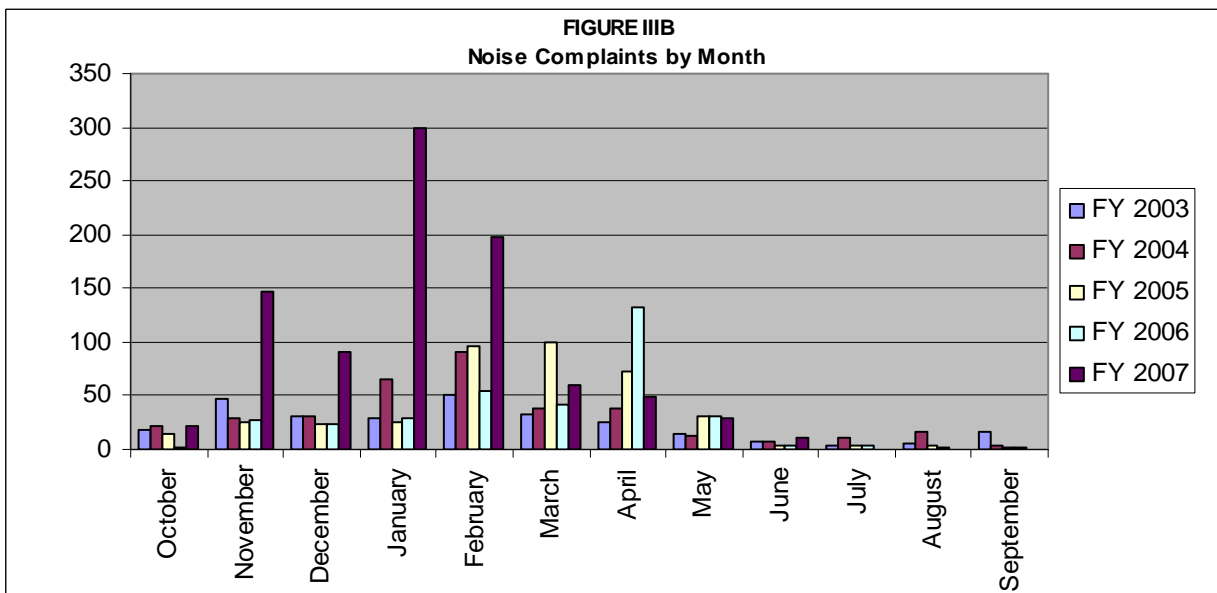


Figure IIIB below, illustrates the airport’s complaint volume for fiscal years 2003, 2004, 2005, 2006 and 2007.



PART IV COMPLAINTS BY OPERATIONAL SOURCE

Figure IVA below, indicates what types of aircraft the complainants were calling about. Fifty-eight (58) of the complaints were about Stage 3 jet aircraft operations and three (3) complaints were in reference to Stage 2 air ambulance operations.

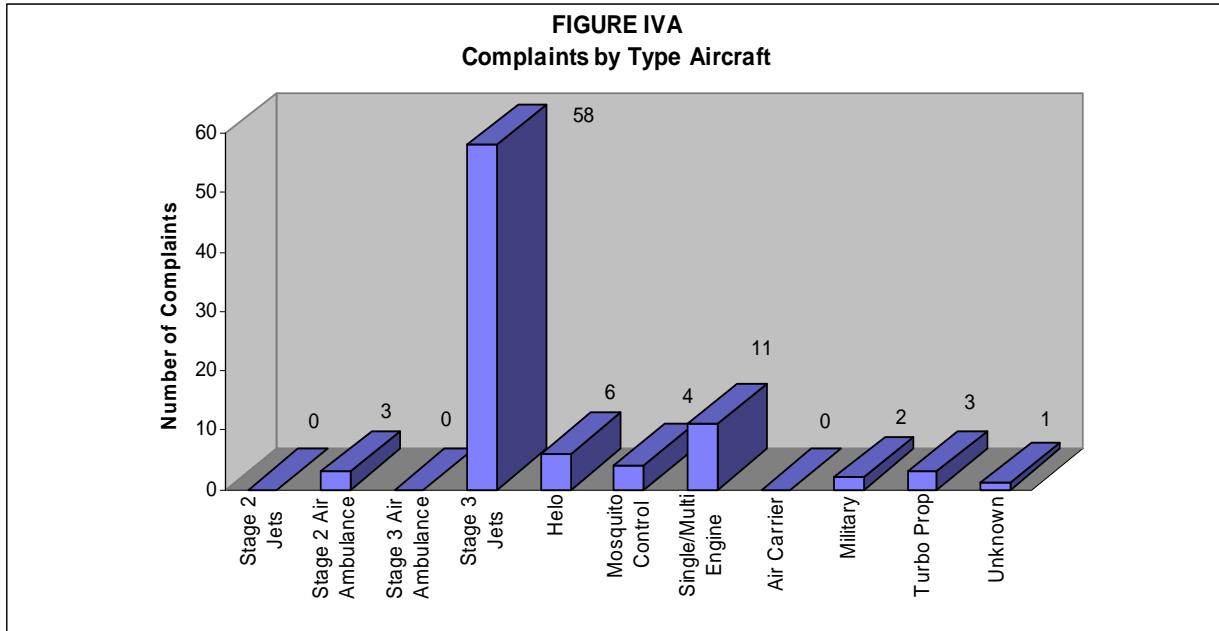
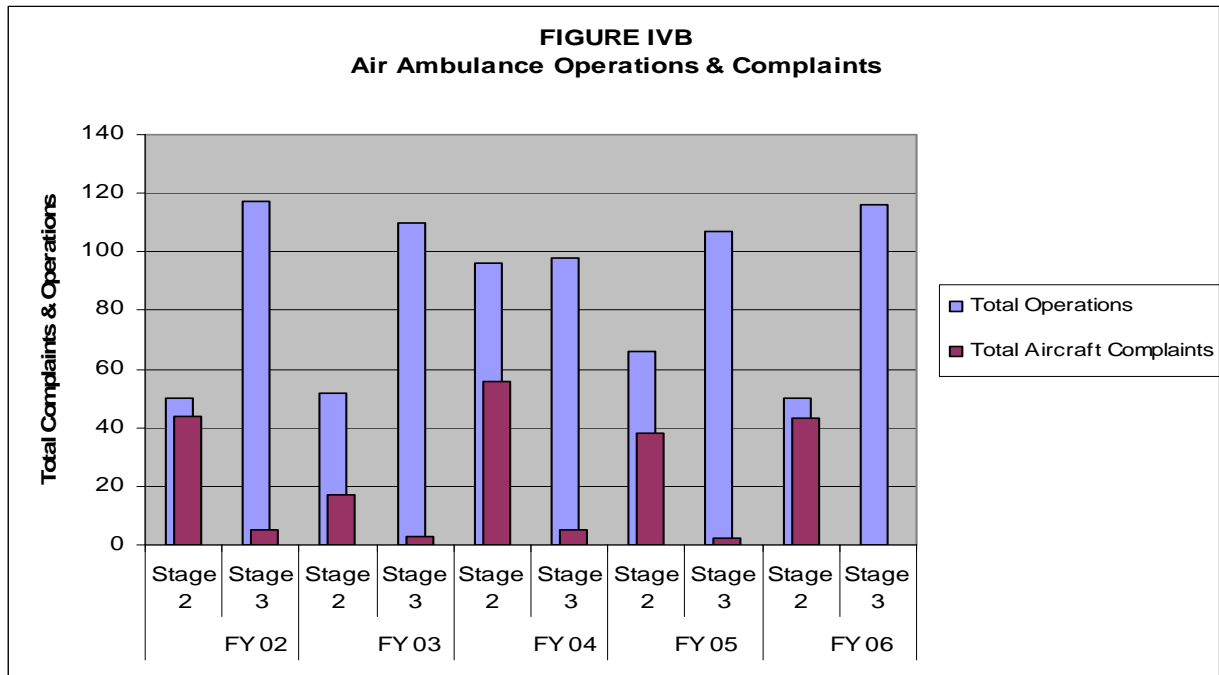
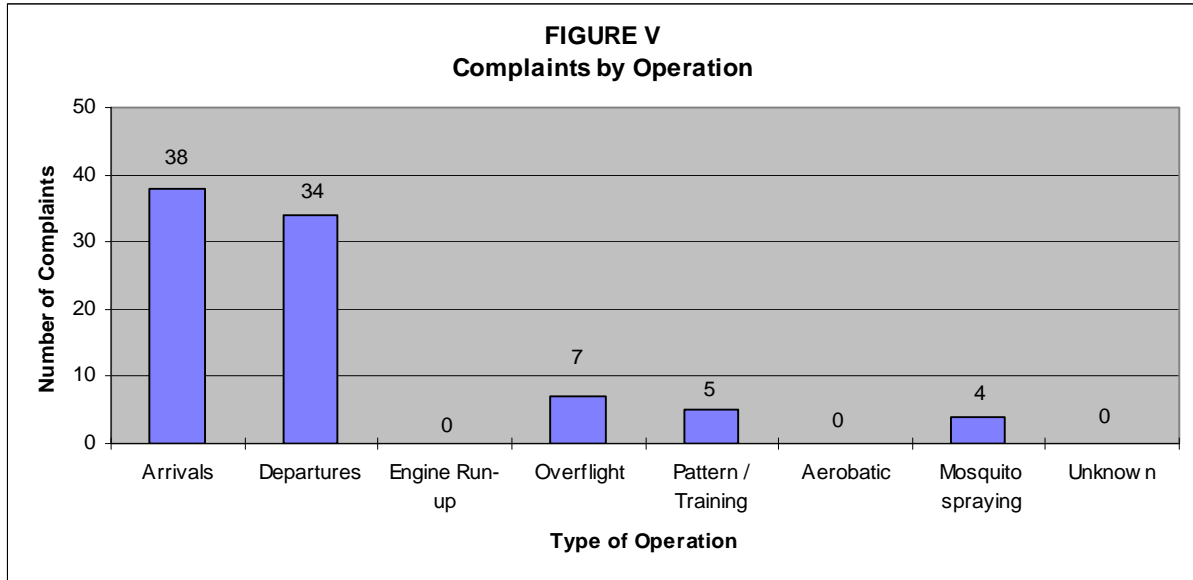


Figure IVB, below, depicts operations and noise complaints received from Stage 2 and Stage 3 Air Ambulances during FY 2002, 2003, 2004, 2005 and 2006.

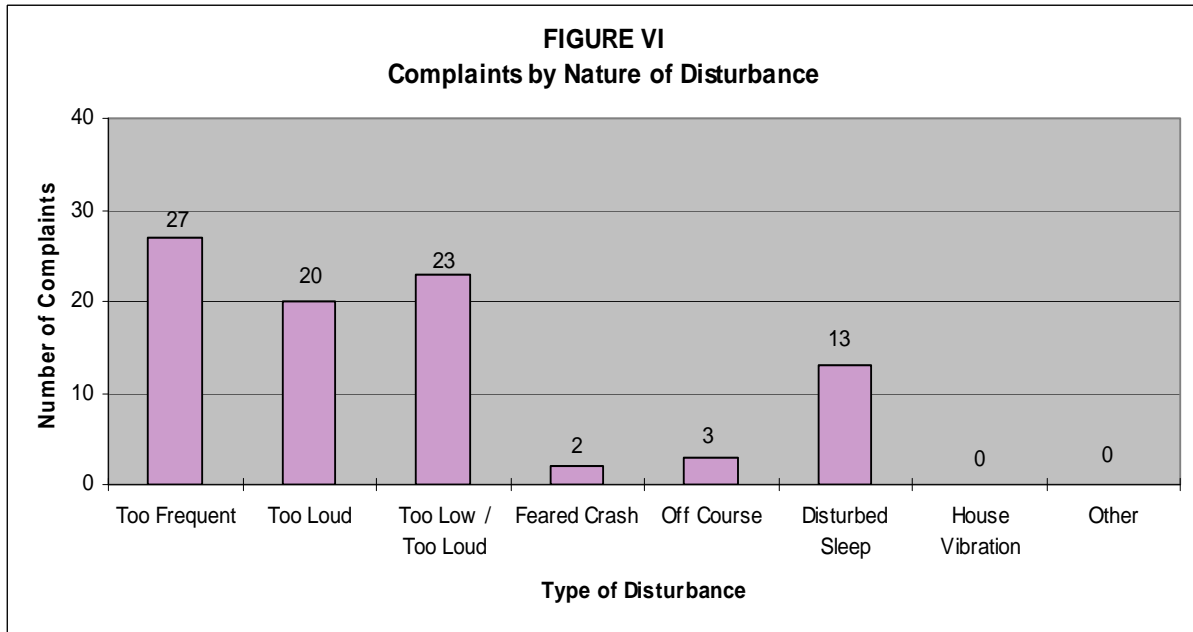


PART V
COMPLAINTS BY OPERATION AND NATURE OF DISTURBANCE

Figure V below, shows the operational source of the noise complaints from the Third Quarter of 2007. The data indicates that arrivals (43%) have slightly surpassed departures (37%) as the main operational source of complaints.



The newly added Figure VI below, indicates the nature of the disturbances from complainants during this quarter. Most calls were in reference to the frequency of the disturbance (31%) followed by “too low / too loud” (26%) and “too loud” (23%). Fifteen percent (15%) of the callers were disturbed during sleep.



SUMMARY

Air Traffic

Compared to the previous quarter, air carrier traffic has decreased 31%, general aviation traffic has decreased by 14%, and total air traffic has decreased by 16%. Compared to the same period one year ago, air carrier traffic increased 3%, general aviation operations have decreased by 5%, and total traffic has decreased 4%.

Twenty-four percent (24%) of the total nighttime operations were attributed to Emergency Services helicopters and air ambulance jet aircraft and one percent (1%) of the operations were attributed to air carrier service. **Jet aircraft operations at night have decreased by ninety-six (96) operations when compared to same period last year.** Single and multi-engine aircraft operations have increased by thirty-four (34) operations and Mosquito Control operations have increased by twenty-eight (28) operations. Total nighttime operations have decreased by eight (8) operations when compared to last year.

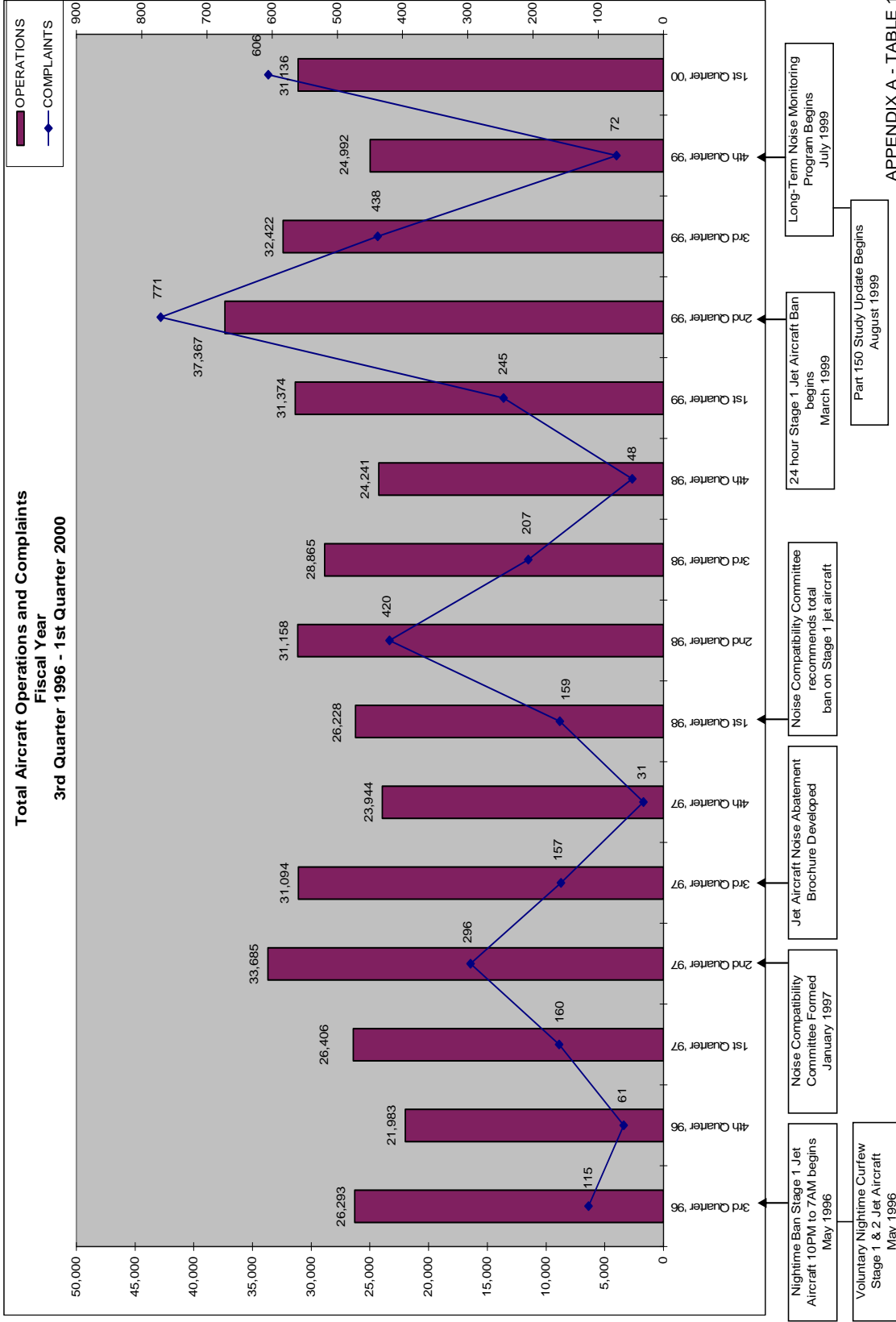
Noise Complaints

Compared to the previous quarter, noise complaints have decreased from 555 to 88. Northeast Quadrant neighborhoods generated the most complaints during the Fiscal Third Quarter of 2007, with a total of 41 complaints. Other areas generated the following number of complaints: Northwest-1, Southwest-27, Southeast-15 and Unknown locations-4.

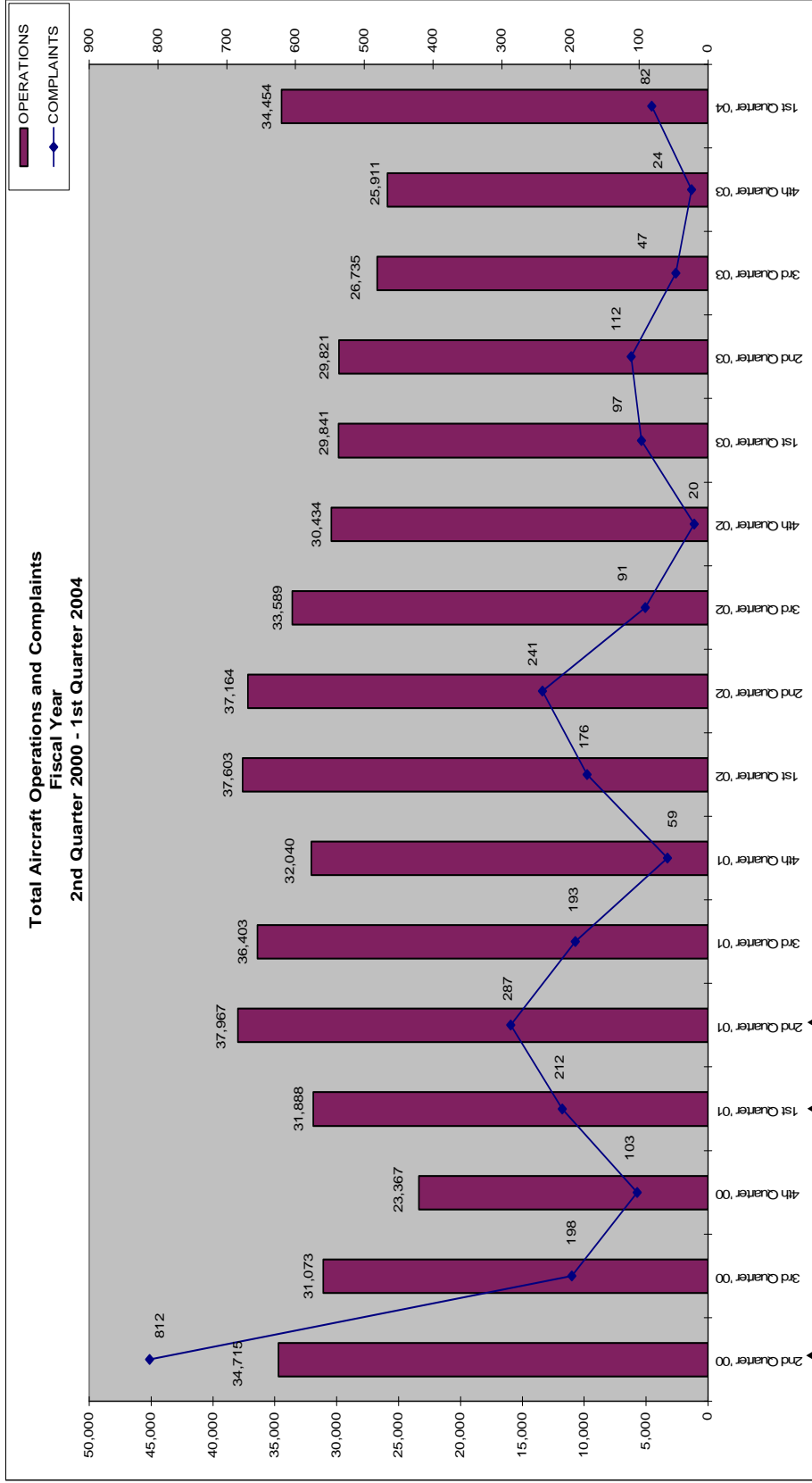
Noise Complaints by Family

Thirty-four (34) different families made 88 complaints to the Noise Abatement Office during the Fiscal Third Quarter of 2007. One family from the northeast made 19 calls or 22% of the total complaints for this quarter.

**Total Aircraft Operations and Complaints
Fiscal Year
3rd Quarter 1996 - 1st Quarter 2000**



**Total Aircraft Operations and Complaints
Fiscal Year
2nd Quarter 2000 - 1st Quarter 2004**



Part 161 Study for Operational Restrictions for Stage 2 Jet Aircraft Begins February 2000

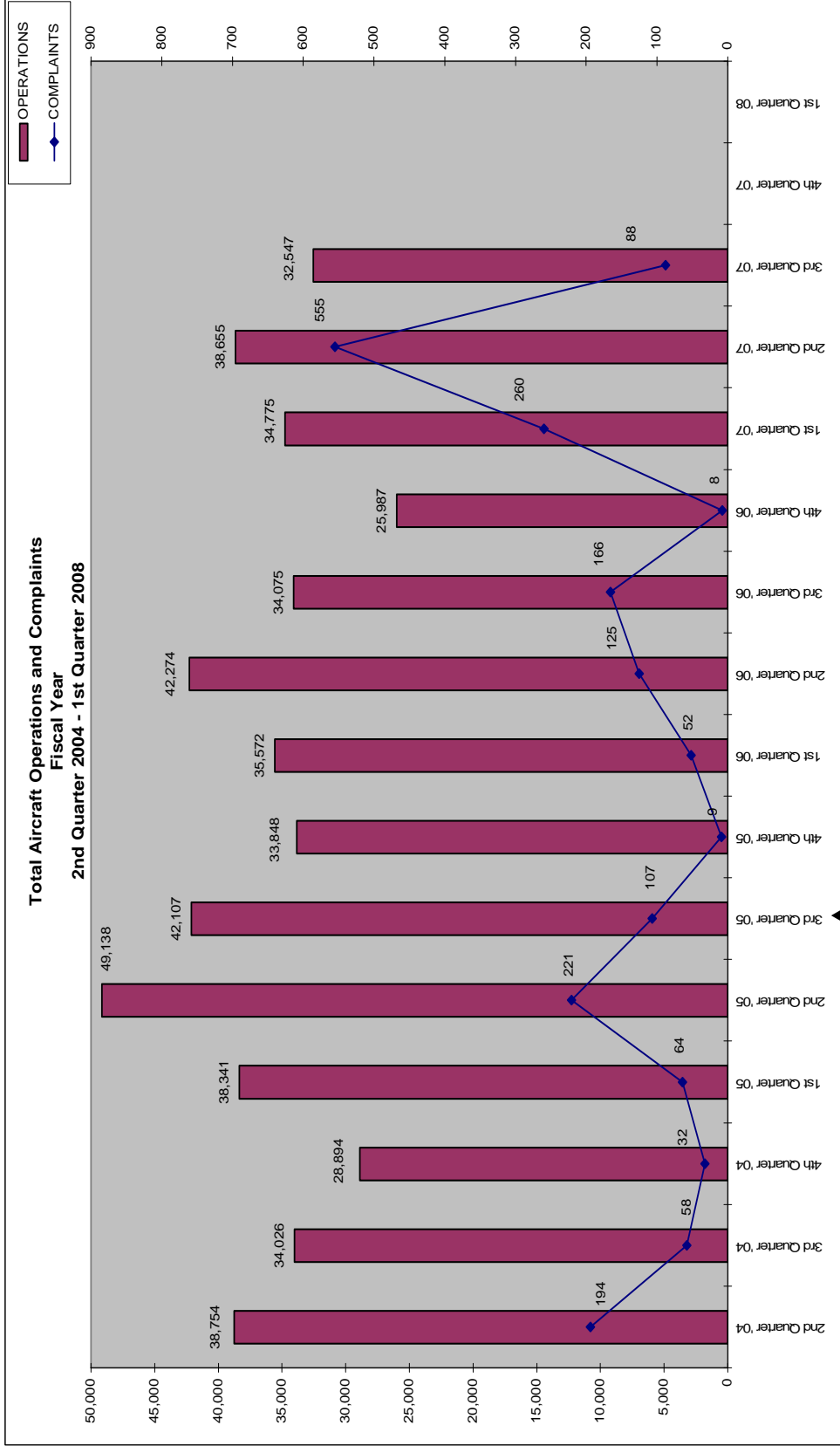
Waiver Program for Stage 2 Aircraft Begins November 2000

Ban on Stage 2 Jet Aircraft Begins (Non-enforcement) January 2001

Supplemental Analysis for the Part 161 Study begins March 2001

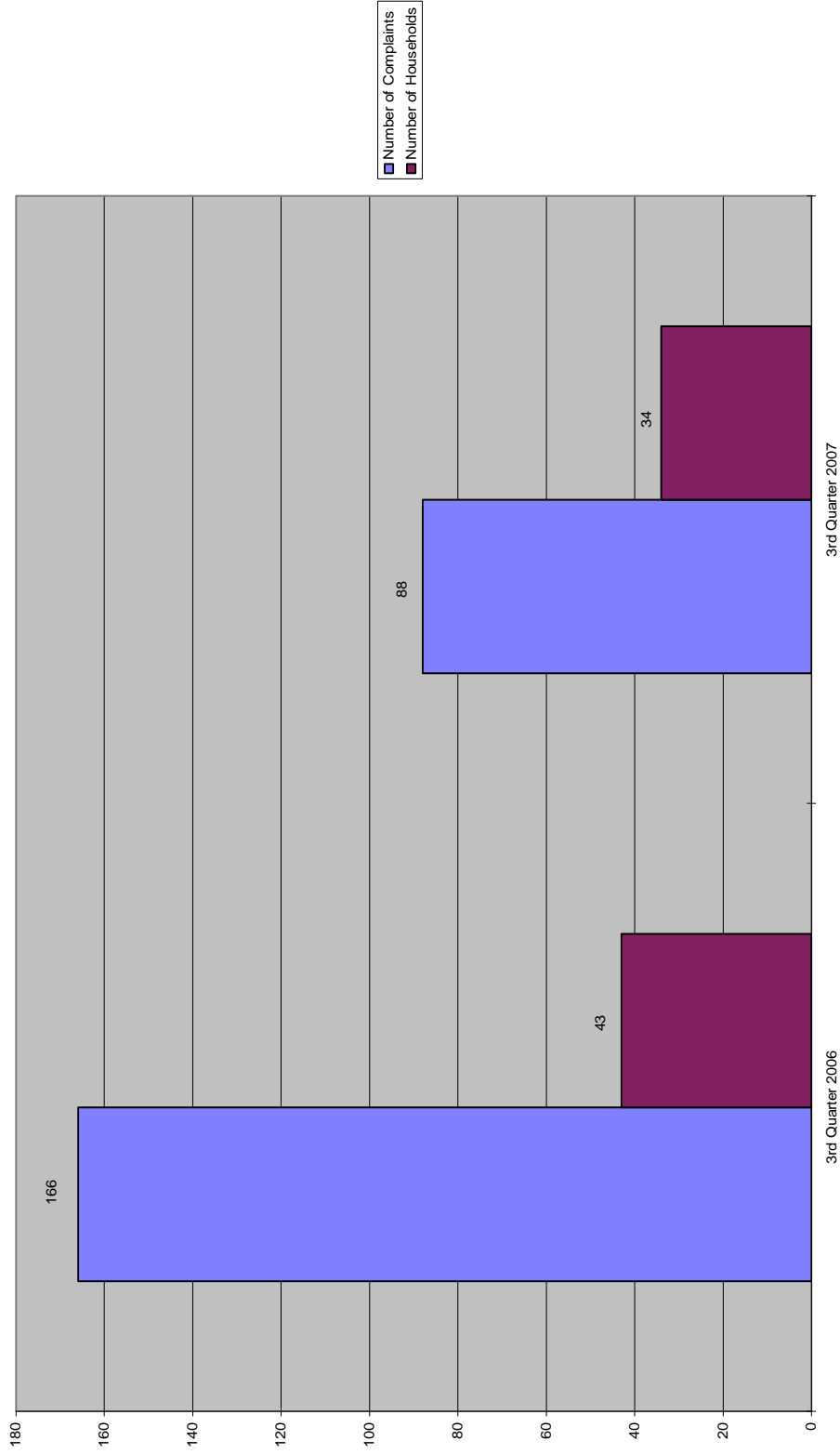
Enforcement of Stage 2 Jet Aircraft Ban Begins March 2002

Waiver Program for Stage 2 Aircraft Ends March 2002



Stage 2 Jet
Aircraft Ban Upheld in U.S.
Court of Appeals

Number of Complaints vs. Number of Households
3rd QUARTER



NOISE COMPLAINTS & OPERATIONS SUMMARY

APPENDIX C

MONTH: April 2007

DATE	7 AM - 10 PM								10 PM - 7 AM								TOTAL OPERATIONS		
	JET+HELO+PROP			JET OPS					JET+HELO+PROP			JET OPS							
	EVENTS	COMPLAINTS	OPERATIONS	TOTAL STAGE 1 OPERATIONS	TOTAL STAGE 2 OPERATIONS	AA STAGE 1 (EXEMPT)	AA STAGE 2 (EXEMPT)	AA STAGE 3 OPERATIONS	EVENTS	COMPLAINTS	OPERATIONS	TOTAL STAGE 1 OPERATIONS	TOTAL STAGE 2 OPERATIONS	AA STAGE 1 (EXEMPT)	AA STAGE 2 (EXEMPT)	AA STAGE 3 OPERATIONS		STAGE 3 GA OPERATIONS	STAGE 3 AT OPERATIONS
Sun-01	2	2	464					2			5								469
Mon-02	1	1	355						1	1	5							3	360
Tue-03	1	1	397								13							6	410
Wed-04	2	2	534								15							6	549
Thu-05	2	2	477								12							6	489
Fri-06	1	1	366					2	1	1	13							5	379
Sat-07			421								13							4	434
Sun-08	2	2	359					4	1	1	13							5	372
Mon-09	3	3	493								14							8	507
Tue-10	2	2	370								4							2	374
Wed-11	2	2	497								10							5	507
Thu-12	2	2	415								7							3	422
Fri-13	2	2	474					2			8							4	482
Sat-14	2	2	353								6					1	3		359
Sun-15			151								9							1	160
Mon-16	1	1	377					2	1	1	6							2	383
Tue-17	1	1	509								8							1	517
Wed-18	2	2	513								12								525
Thu-19	1	1	548					2			9							1	557
Fri-20	10	10	552						1	1	11							3	563
Sat-21			360					2			9							2	369
Sun-22			454								3								457
Mon-23	1	1	462								13							3	475
Tue-24	1	1	371								5							1	376
Wed-25	1	1	437								11							2	448
Thu-26			432								4							1	436
Fri-27	1	1	422					2			8							3	430
Sat-28			300								9								309
Sun-29	1	1	375								4							2	379
Mon-30			354					2			6							1	360
TOTALS	44	44	12,592	0	0	0	2	26	5	5	265	0	0	0	0	1	83	0	12,857

COMPLAINTS			
	DAY	NIGHT	TOTAL
Events	44	5	49
Complaints	44	5	49
Operations (Ops)	12,592	265	12,857
%Events/Ops	0.3%	1.9%	0.4%
Complaints & Events	1.0	1.0	1.0
% Complaints/ Ops	0.3%	1.9%	0.4%

NIGHT OPERATIONS	
Air Ambulance (AA)	J 1
EMS	H 4
Sheriff's Office	H 42
Mosquito Control	H 0
Mosquito Control	P 0
Public Service	J,H,P 47
Non-Jet Air Carrier & GA	H,P 135
Total GA Jet Ops	J 83
Total AT Jet Ops	J 0
Total Jet Operations	J 84
Night Ops - Total	J,H,P 265

RESTRICTIONS		Violations	Letters
Mandatory Restriction (MR)			
Runups: Maintenance		0	0
Jet Stage 1 day & night Ops		0	0
Jet Stage 2 day & night Ops		0	0
Voluntary Restriction (VR)			
Jet Stage 3 night Ops		4	4

NOISE COMPLAINTS & OPERATIONS SUMMARY

APPENDIX C

MONTH: May 2007

DATE	7 AM - 10 PM								10 PM - 7 AM								TOTAL OPERATIONS		
	JET+HELO+PROP			JET OPS					JET+HELO+PROP			JET OPS							
	EVENTS	COMPLAINTS	OPERATIONS	TOTAL STAGE 1 OPERATIONS	TOTAL STAGE 2 OPERATIONS	AA STAGE 1 (EXEMPT)	AA STAGE 2 (EXEMPT)	AA STAGE 3 OPERATIONS	EVENTS	COMPLAINTS	OPERATIONS	TOTAL STAGE 1 OPERATIONS	TOTAL STAGE 2 OPERATIONS	AA STAGE 1 (EXEMPT)	AA STAGE 2 (EXEMPT)	AA STAGE 3 OPERATIONS	STAGE 3 GA OPERATIONS	STAGE 3 AT OPERATIONS	
Tue-01			390								9						2	1	399
Wed-02	2	2	469							21							5	1	490
Thu-03	2	2	401							7							1		408
Fri-04			372							7							1		379
Sat-05	2	2	352							7							2	1	359
Sun-06	1	1	376							6									382
Mon-07	1	1	279							6							1		285
Tue-08			286						1	1	6						3		292
Wed-09	1	1	476							14							5		490
Thu-10	3	4	399				2			10							1		409
Fri-11			300							5									305
Sat-12			287							3								1	290
Sun-13			260							5									265
Mon-14			213							6							1		219
Tue-15	1	1	316							9						2			325
Wed-16			354						1	1	12						3		366
Thu-17			403						1	2	10						4		413
Fri-18			355							6							4		361
Sat-19			314							7							1	1	321
Sun-20			328						1	1	8						1		336
Mon-21			374							8							1		382
Tue-22			352							10							3		362
Wed-23			256							8							1		264
Thu-24	1	1	263						1	1	7						1		270
Fri-25			307						1	1	10						1		317
Sat-26			219						1	1	12						2		231
Sun-27			246						1	1	8						1		254
Mon-28			240							8							3		248
Tue-29			332							11							2		343
Wed-30	1	1	343						3	3	14						5		357
Thu-31	1	1	313							7							2		320
TOTALS	16	17	10,175	0	0	0	2	18	11	12	267	0	0	0	0	2	57	5	10,442

COMPLAINTS			
	DAY	NIGHT	TOTAL
Events	16	11	27
Complaints	17	12	29
Operations (Ops)	10,175	267	10,442
%Events/Ops	0.2%	4.1%	0.3%
Complaints & Events	0.9	0.9	0.9
% Complaints/ Ops	0.2%	4.5%	0.3%

NIGHT OPERATIONS	
Air Ambulance (AA)	J 2
EMS	H 4
Sheriff's Office	H 63
Mosquito Control	H 5
Mosquito Control	P 1
Public Service	J,H,P 75
Non-Jet Air Carrier & GA	H,P 130
Total GA Jet Ops	J 57
Total AT Jet Ops	J 5
Total Jet Operations	J 64
Night Ops - Total	J,H,P 267

RESTRICTIONS		Violations	Letters
Mandatory Restriction (MR)			
Runups: Maintenance		0	0
Jet Stage 1 day & night Ops		0	0
Jet Stage 2 day & night Ops		0	0
Voluntary Restriction (VR)			
Jet Stage 3 night Ops		5	4

NOISE COMPLAINTS & OPERATIONS SUMMARY

APPENDIX C

MONTH: June 2007

DATE	7 AM - 10 PM								10 PM - 7 AM								TOTAL OPERATIONS		
	JET+HELO+PROP			JET OPS					JET+HELO+PROP			JET OPS							
	EVENTS	COMPLAINTS	OPERATIONS	TOTAL STAGE 1 OPERATIONS	TOTAL STAGE 2 OPERATIONS	AA STAGE 1 (EXEMPT)	AA STAGE 2 (EXEMPT)	AA STAGE 3 OPERATIONS	EVENTS	COMPLAINTS	OPERATIONS	TOTAL STAGE 1 OPERATIONS	TOTAL STAGE 2 OPERATIONS	AA STAGE 1 (EXEMPT)	AA STAGE 2 (EXEMPT)	AA STAGE 3 OPERATIONS		STAGE 3 GA OPERATIONS	STAGE 3 AT OPERATIONS
Fri-01			143					2			7						1		150
Sat-02			108								1								109
Sun-03			307								6								313
Mon-04			299								12						1		311
Tues-05			310								6								316
Wed-06	1	1	154								7								161
Thur-07	1	1	392								9								401
Fri-08			258						1	1	12						3		270
Sat-09			258					2			5								263
Sun-10			283								5						1		288
Mon-11			365								8						1		373
Tues-12			223								17						1		240
Wed-13			303								8						2		311
Thur-14			380						1	1	13						3		393
Fri-15			329					2			2								331
Sat-16			299								5								304
Sun-17			207								8								215
Mon-18	1	1	339				2	2			7								346
Tues-19			359								9						1		368
Wed-20			390								16						1		406
Thurs-21			336								5								341
Fri-22			322								12						1		334
Sat-23	1	1	361								5						1		366
Sun-24			336								12								348
Mon-25	1	1	304								13						3		317
Tues-26	1	1	289								12						2		301
Wed-27			372								10								382
Thurs-28			382						1	1	5						1		387
Fri-29			353						1	1	9							1	362
Sat-30			236								5								241
TOTALS	6	6	8,997	0	0	0	2	8	4	4	251	0	0	0	0	0	22	2	9,248

COMPLAINTS			
	DAY	NIGHT	TOTAL
Events	6	4	10
Complaints	6	4	10
Operations (Ops)	8,997	251	9,248
%Events/Ops	0.1%	1.6%	0.1%
Complaints & Events	1.0	1.0	1.0
% Complaints/ Ops	0.1%	1.6%	0.1%

NIGHT OPERATIONS	
Air Ambulance (AA)	J 0
EMS	H 13
Sheriff's Office	H 56
Mosquito Control	H 34
Mosquito Control	P 10
Public Service	J,H,P 113
Non-Jet Air Carrier & GA	H,P 114
Total GA Jet Ops	J 22
Total AT Jet Ops	J 2
Total Jet Operations	J 24
Night Ops - Total	J,H,P 251

RESTRICTIONS		Violations	Letters
Mandatory Restriction (MR)			
Runups: Maintenance		0	0
Jet Stage 1 day & night Ops		0	0
Jet Stage 2 day & night Ops		0	0
Voluntary Restriction (VR)			
Jet Stage 3 night Ops		0	0