



**CITY OF NAPLES AIRPORT AUTHORITY**

**QUARTERLY NOISE REPORT**

NUMBER 62

For the period

April 1, 2012 through June 30, 2012

Prepared by the  
Noise Abatement Office



## TABLE OF CONTENTS

	Page
<b>INTRODUCTION</b>	1
<b>PART I AIRCRAFT OPERATIONS</b>	1
Figure IA	Total Monthly Operations 1
Figure IB	Total Night Operations by Month 2
Table I	Quarterly Air Traffic Nighttime Operations Summary 3
Table II	Fiscal Year Percentage of Nighttime Operations 3
<b>PART II CITIZEN COMMENTS</b>	4
Figure IIA	Noise Comments by Geographical Area 5
<b>PART III COMMENTS BY TIMEFRAME</b>	6
Figure IIIA	Noise Comments by Hour 6
Figure IIIB	Noise Comments by Month 6
<b>PART IV COMMENTS BY OPERATIONAL SOURCE</b>	7
Figure IVA	Comments by Type Aircraft 7
<b>PART V COMMENTS BY OPERATION AND NATURE OF DISTURBANCE</b>	8
Figure V	Comments by Operations 8
Figure VI	Comments by Nature of Disturbance 8
Appendix A	Total Aircraft Operations and Comments
Appendix B	Noise Comment / Operations Summary (Apr, May, June)

**PART I  
AIRCRAFT OPERATIONS**

**INTRODUCTION**

This is the sixty-second Quarterly Noise Report prepared by the City of Naples Airport Authority - Noise Abatement Office. The information contained in this report is for the Third Quarter of fiscal year 2012 (April through June 2012). All percentages are rounded to the nearest percent.

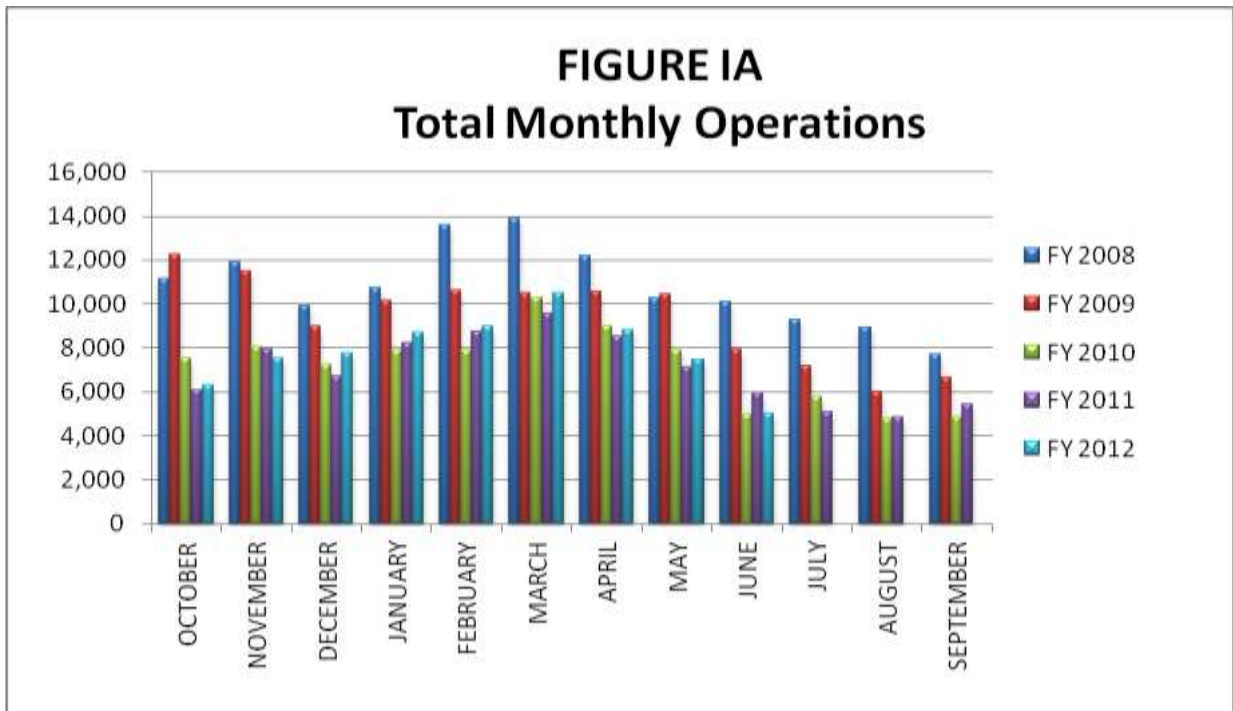
**AIRCRAFT OPERATIONS**

Figure 1A contains aircraft movement information from FAA Form 7230-1 and after hour movements recorded by the City of Naples Airport Authority Security Officers. Naples Air Traffic Control Tower is operational from 6:00 AM through 10:00 PM. A single movement represents either one arrival or one departure by the aircraft.

**This Quarter Compared to the Same Period One Year Ago**

Compared to the same period last year, air carrier traffic (non-scheduled operators) has increased by 5% and general aviation air traffic has decreased by 2%. Total air traffic operations decreased by 1% from 21,658 operations to 21,336.

Figure IA illustrates the airport's month-by-month total operational levels for fiscal years 2008 through 2012.



### Night Time Operations

Figure IB, illustrates the airport's monthly nighttime (10:00 PM – 7:00 AM) operational levels for fiscal years 2008 through 2012.

Total nighttime operations have decreased by 14% in the Third Quarter of 2012 when compared to the Third Quarter 2011 statistics. Jet operations occurring at night decreased by 33 operations, or 22%, and single and multi-engine aircraft operations decreased by 11 operations, or 5%.

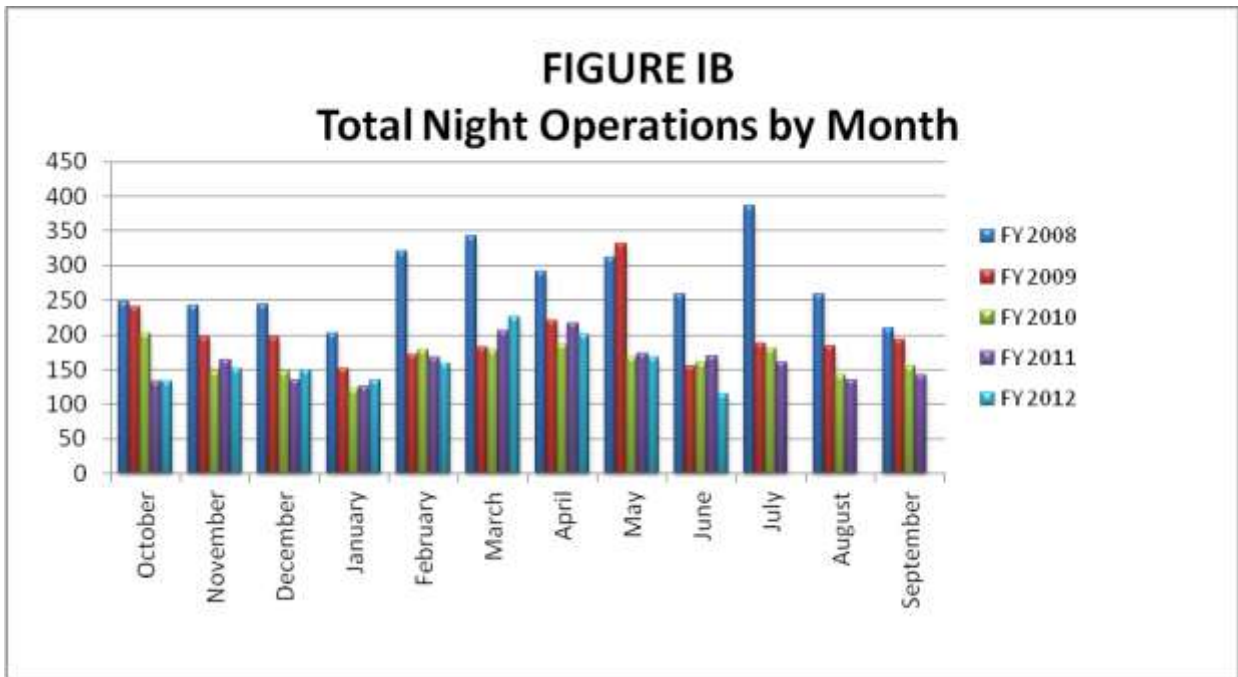


Table I summarizes the types of nighttime operations occurring at the airport during the previous five quarters. Nighttime operations include voluntary curfew hours (10:00 PM through 7:00 AM). Public Service operations represent 31% of the activity occurring at night and nighttime operations accounted for two percent (2%) of the overall operations for the Third Quarter of 2012.

**Table I**  
**Quarterly Air Traffic Nighttime Operations Summary – by Fiscal Year**

Activity	3 <sup>rd</sup> 2011	4 <sup>th</sup> 2011	1 <sup>st</sup> 2012	2 <sup>nd</sup> 2012	3 <sup>rd</sup> 2012	3 <sup>rd</sup> Quarter 2012 vs. 2011
<b>JETS</b>						
Air Carrier	0	0	0	0	0	NMF
GA	150	72	137	235	117	-22%
<b>SUBTOTAL JETS</b>	<b>150</b>	<b>72</b>	<b>137</b>	<b>235</b>	<b>117</b>	<b>-22%</b>
<b>SINGLE &amp; MULTI-ENGINE (includes air carrier &amp; GA)</b>	<b>226</b>	<b>108</b>	<b>139</b>	<b>170</b>	<b>215</b>	<b>-5%</b>
<b>PUBLIC SERVICE</b>						
Mosquito Control Ops	22	136	39	0	48	118%
Collier Sheriff Office	111	108	79	79	60	-46%
EMS	46	11	35	25	36	-22%
Coast Guard/Military	0	0	0	2	2	NMF
Air Ambulance	3	2	4	8	4	33%
<b>SUBTOTAL PUBLIC SERVICE</b>	<b>182</b>	<b>257</b>	<b>157</b>	<b>114</b>	<b>150</b>	<b>-18%</b>
<b>TOTAL</b>	<b>558</b>	<b>437</b>	<b>433</b>	<b>519</b>	<b>482</b>	<b>-14%</b>

*NMF = No Meaningful Figure*

Table II depicts the percentage of nighttime operations as compared to total operations for the last ten fiscal years, and the percentage of nighttime operations occurring from jet operations. Night operations represent three percent (3%) for FY 02 – 03 and two percent (2%) of the total operations for each year FY04 through FY12.

**Table II**  
**Fiscal Year Percentage of Nighttime Operations**

Fiscal Year	Total Operations	Night Operations	% of Night Ops	% of Jet Night Ops
2002	138,790	3,626	3%	21%
2003	112,308	3,170	3%	23%
2004	136,128	3,361	2%	23%
2005	163,434	3,130	2%	34%*
2006	137,908	2,935	2%	38%*
2007	132,908	2,994	2%	29%*
2008	129,731	3,314	2%	24%
2009	112,903	2,407	2%	21%
2010	86,187	1,973	2%	26%
2011	84,339	1,926	2%	31%
2012	71,147 (thru Jun 2012)	1,434 (thru Jun 2012)	2%	34%

\* Delta began CRJ service in FY05. They had 328 nighttime operations in FY 05, 352 nighttime operations in FY 06 and 117 nighttime operations in FY 07. Without Delta's operations, the percentage of jet night operations in FY05 would have been twenty-four percent (24%) of the total nighttime operations and twenty-six percent (26%) of the total in FY 06 and twenty-five percent (25%) of the total in FY 07.

## **PART II CITIZEN COMMENTS**

Citizen noise comments are separated according to four geographical areas (quadrants). Below is a sample representation of the neighborhoods in each quadrant. Every neighborhood in the area is not included in this list, although it is included in the quadrant total.

**Northeast Quadrant** - Briarwood, Golden Gate, Grey Oaks, Hawks Ridge, Wyndemere, and surrounding northeast areas.

**Northwest Quadrant** - Bears Paw, Coconut River Estates, Coquina Sands, Country Club of Naples, Lake Forest, Lake Park, Park Shore, Ridge Lakes, River Estates, River Reach, Sun Terrace, Moorings, Wilderness, and surrounding northwest areas.

**Southwest Quadrant** - Aqualane Shores, Old Naples, Port Royal, Royal Harbor, and surrounding southwest neighborhoods.

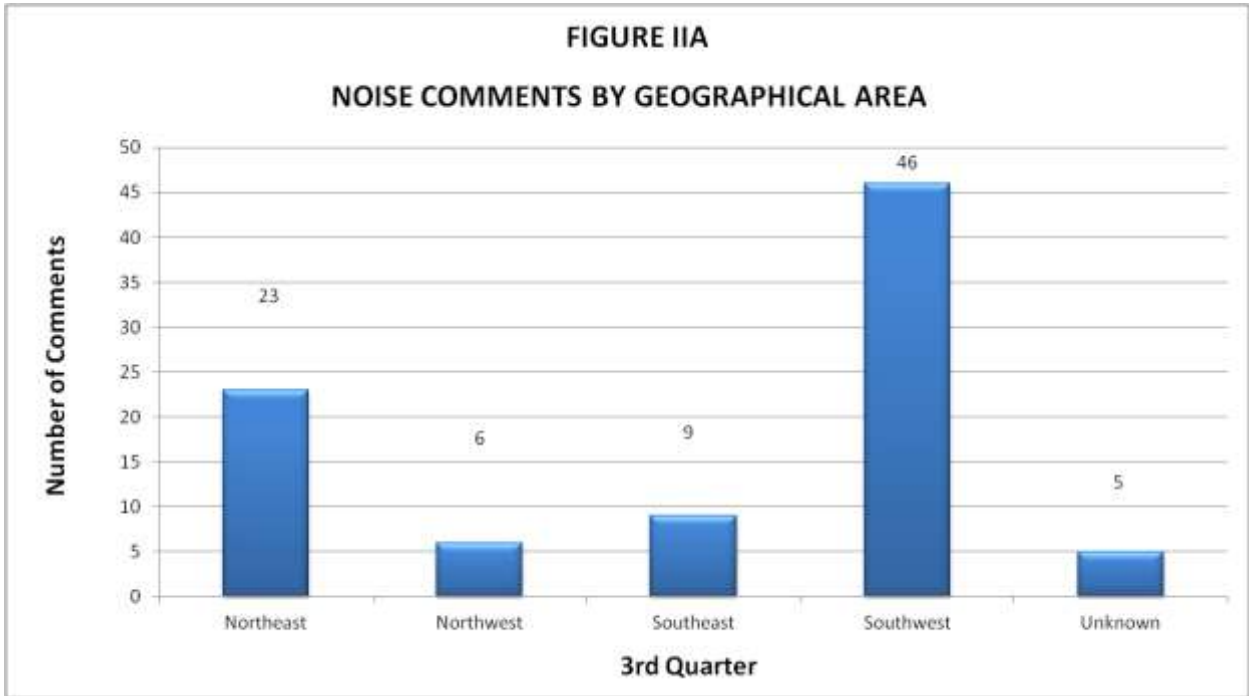
**Southeast Quadrant** - Brookside, Coconut Grove, Flamingo Estates, Foxfire, Kings Lake, Lakewood, Naples Gardens, Rock Creek Campground, The Glades, and surrounding neighborhoods.

The analysis includes the specific nature of the comment, whether it was an arriving or departing aircraft or an overflight. Comments relative to nighttime Mosquito Control operations, air ambulance flights, Sheriff's Office and EMS helicopter operations are included in this report. Thanks to Mosquito Control publishing their flight operations, our noise comments have decreased.

### **This Quarter Compared to the Same Period One Year Ago**

Compared to the same period last year, the total number of comments increased by 58 calls, from 31 to 89, total operations have decreased by 1% and nighttime operations have decreased by 14%. Comments received from neighborhoods to the northeast of the airport have increased by 20, from the northwest they decreased by 6, from the southeast they increased by 7, from the southwest they increased by 32, and 5 were unknown direction.

Figure IIA graphically compares the noise comments received by geographical areas based on data collected during the Third Quarter of 2012. When compared to the same period one year ago, total comments for this quarter have increased by 58 comments, from 31 in 2011 to 89 in 2012.



### PART III COMMENTS BY TIMEFRAME

Figure IIIA depicts noise comments for the Third Quarter according to the time of the single event. The highest number of comments was received during the 6:00 AM hour. Fifty-three percent (53%) of the total comments were received during the voluntary curfew hours.

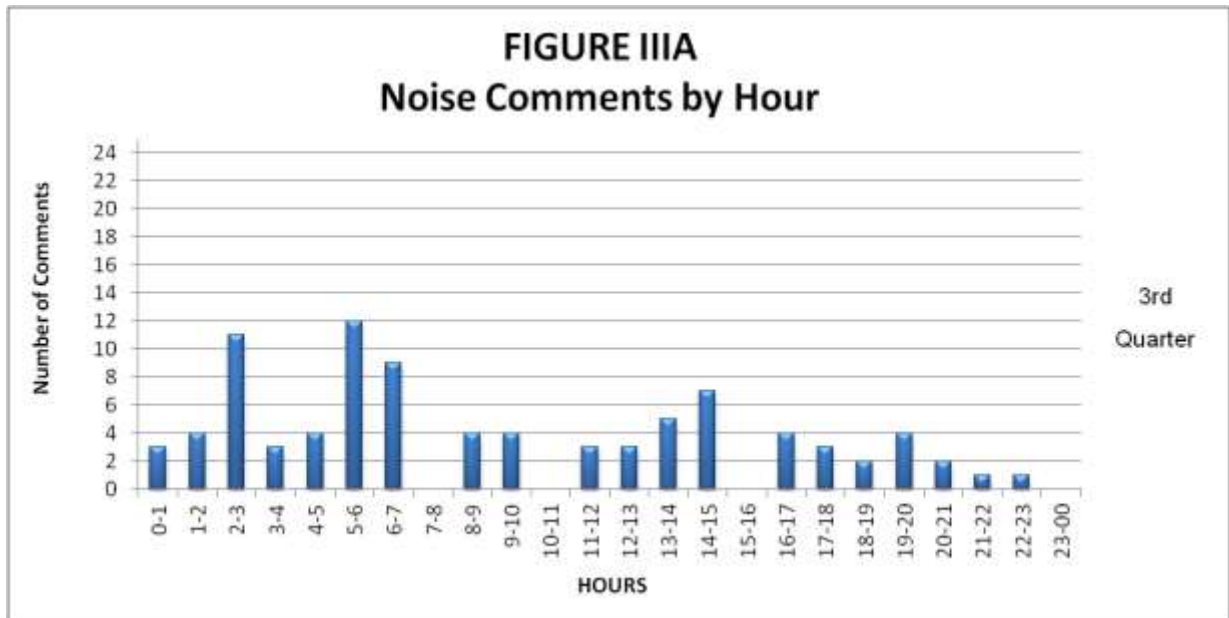
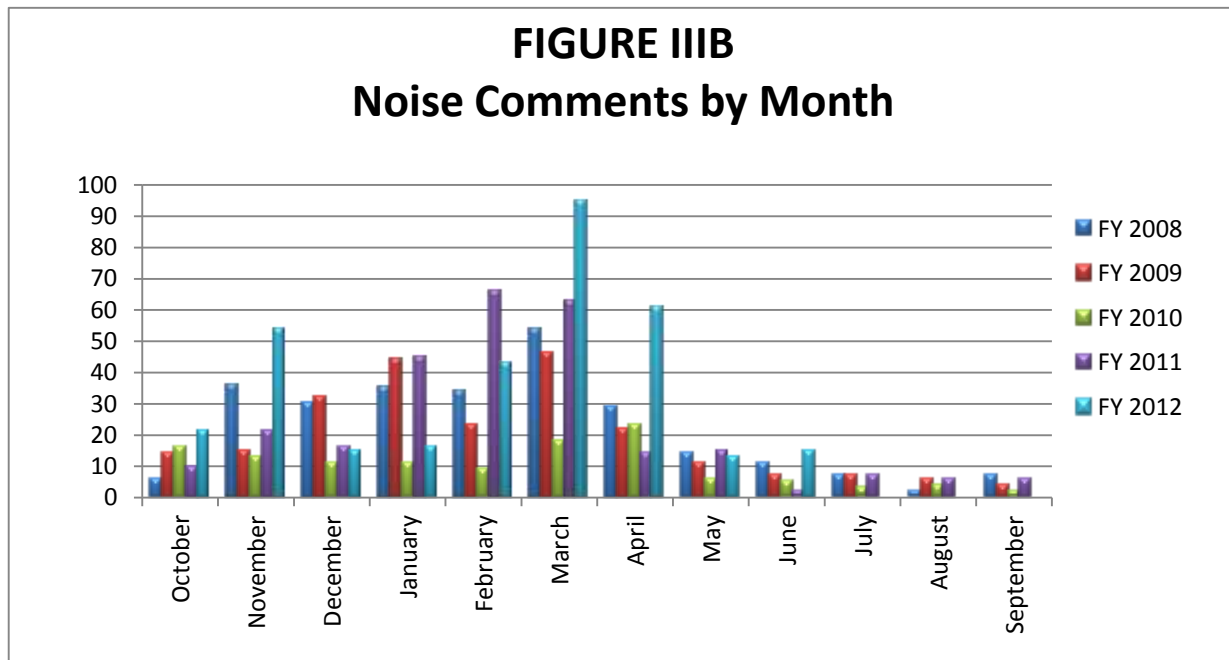


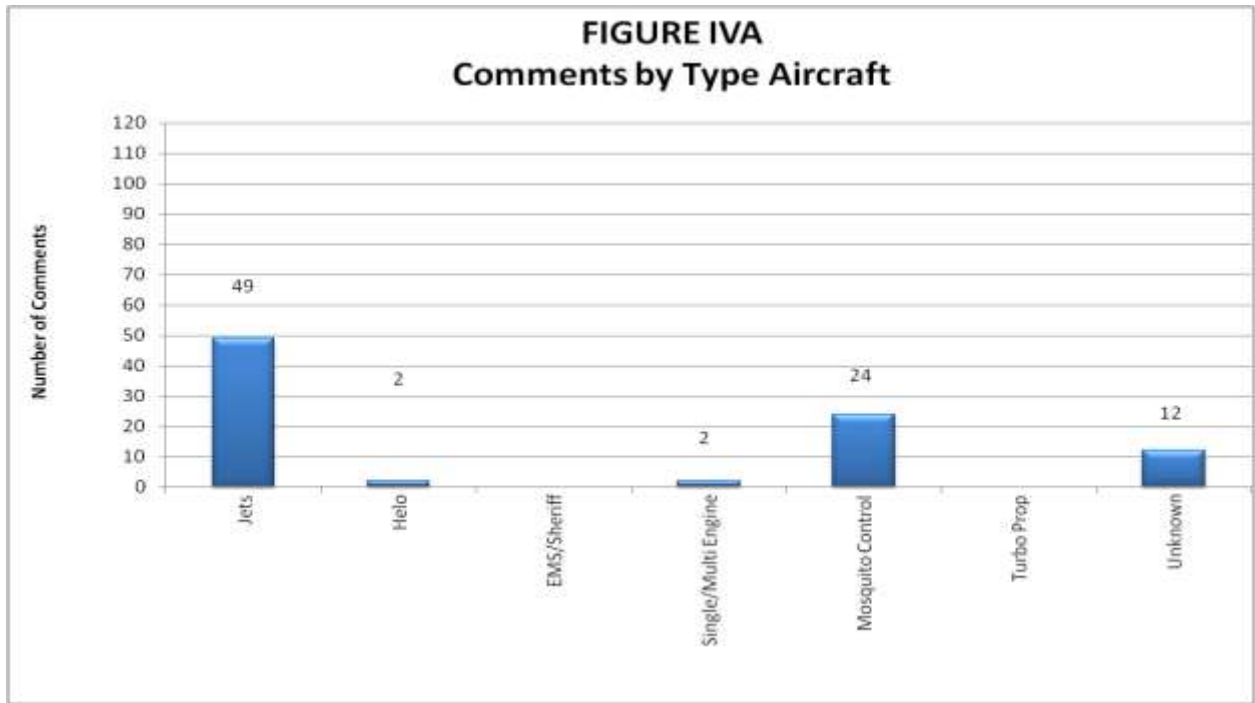
Figure IIIB illustrates the airport’s comment volume for fiscal years 2008 through 2012.





**PART IV**  
**COMMENTS BY OPERATIONAL SOURCE**

Figure IVA indicates which types of aircraft the callers were calling about. Fifty-five percent (55%) of the comments were about jet aircraft operations, and 27% were Mosquito Control Operations.



## PART V COMMENTS BY OPERATION AND NATURE OF DISTURBANCE

Figure V shows the operational source of the noise comments from the Third Quarter of 2012. The data indicates that arrival operations account for the main operational source of comments.

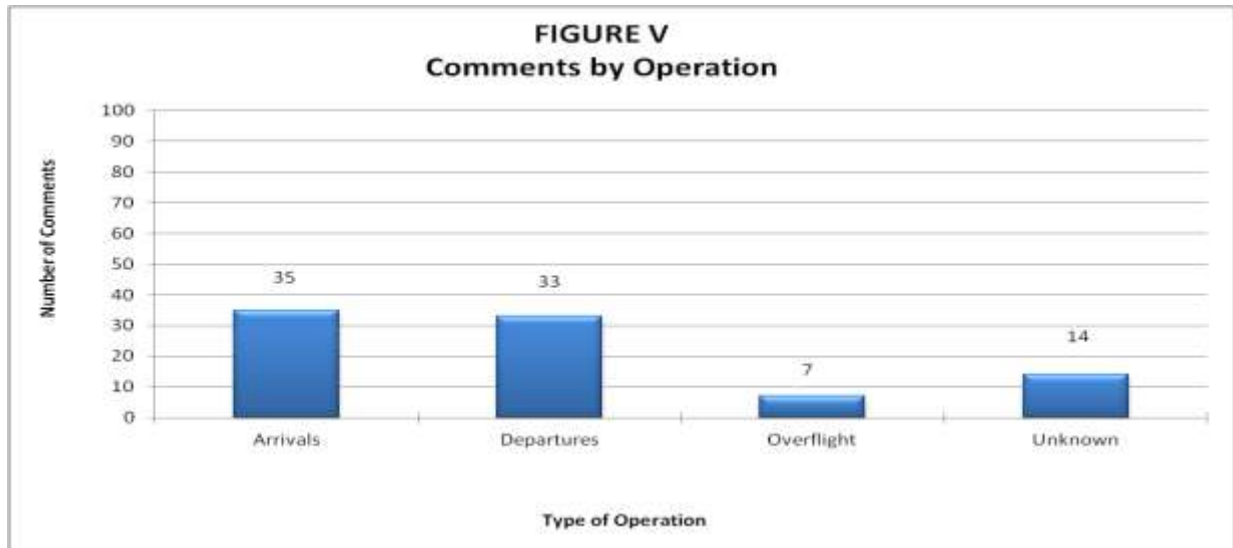
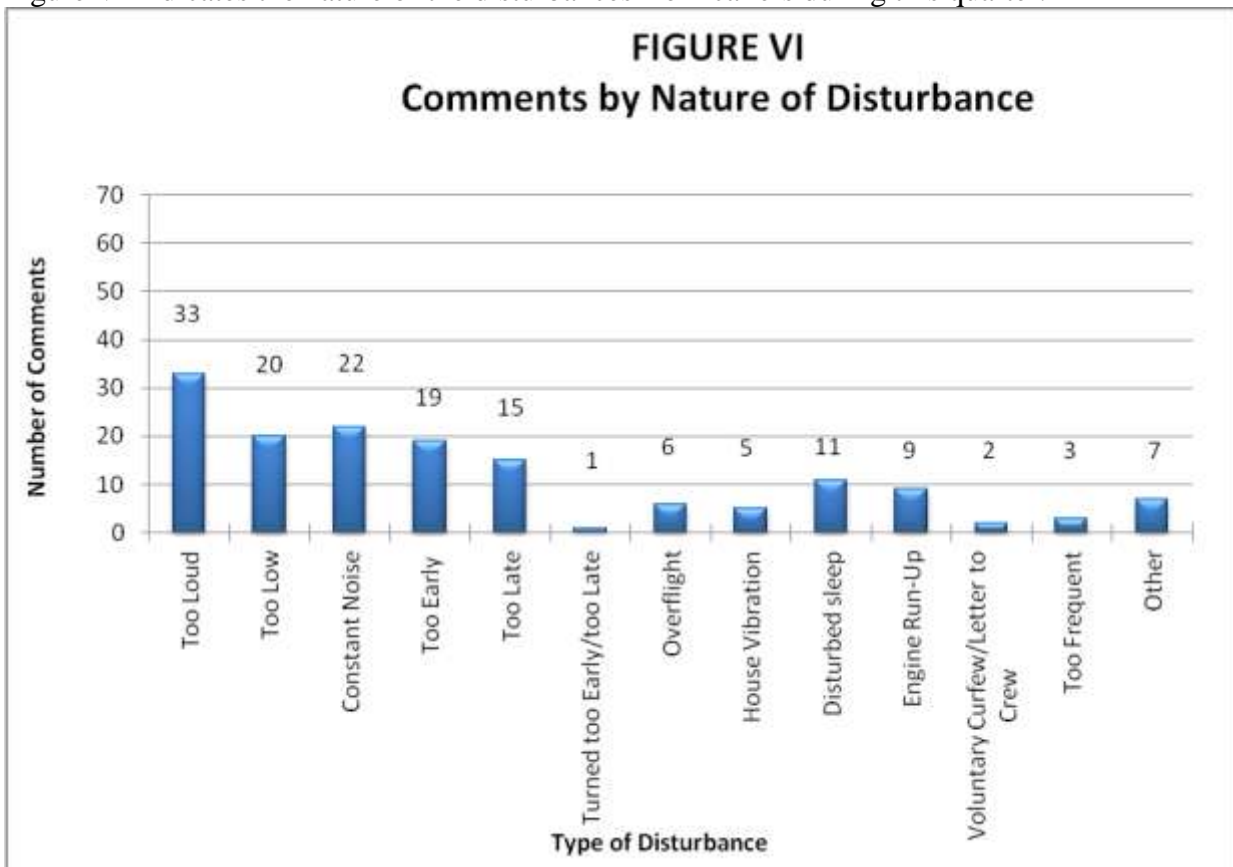
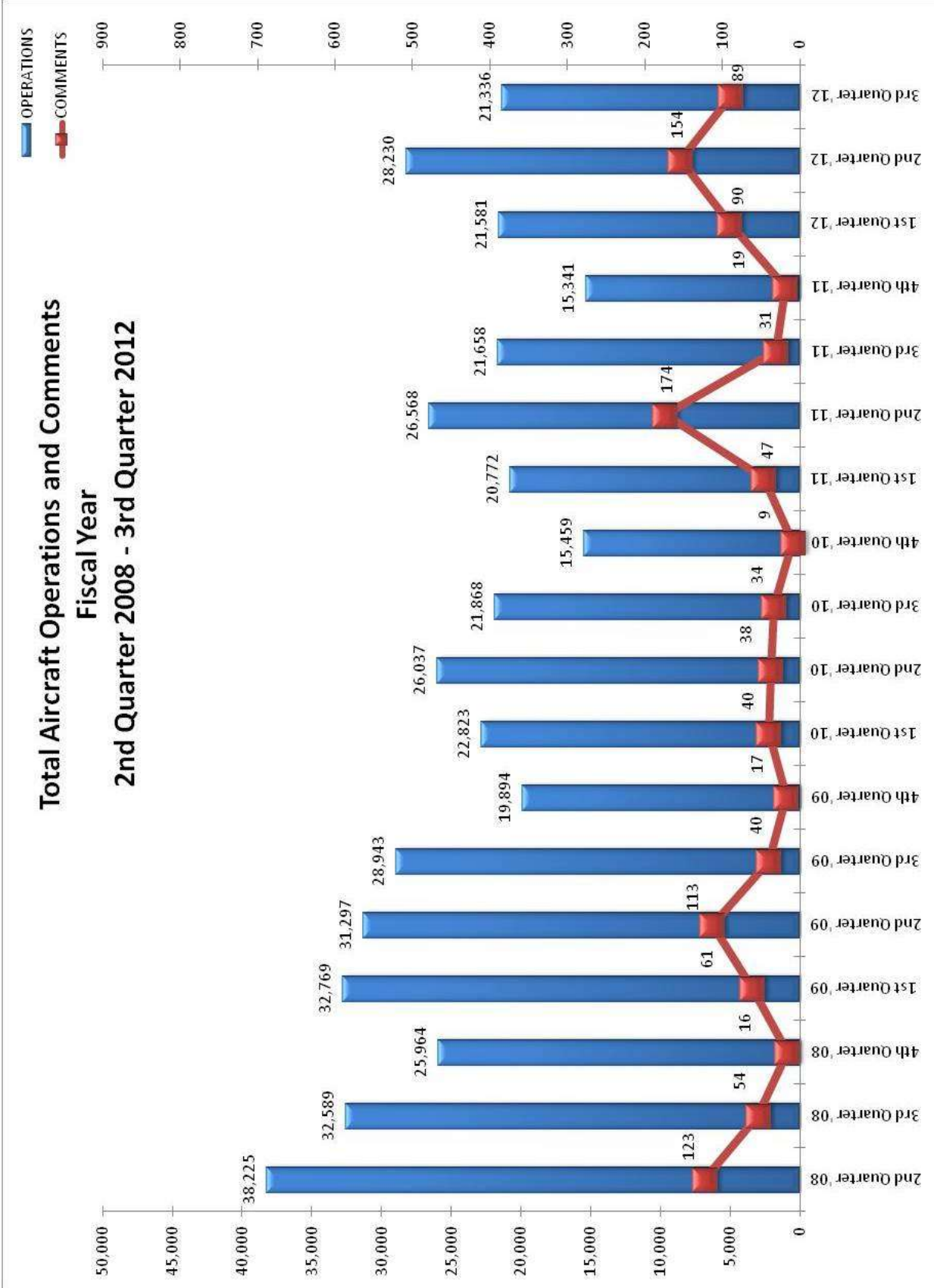


Figure VI indicates the nature of the disturbances from callers during this quarter.



### Total Aircraft Operations and Comments Fiscal Year 2nd Quarter 2008 - 3rd Quarter 2012



# NOISE COMMENTS & OPERATIONS SUMMARY

APPENDIX B

MONTH: April-12

DATE	7 AM - 10 PM								10 PM - 7 AM								TOTAL OPERATIONS		
	JET+HELO+PROP			JET OPS					JET+HELO+PROP			JET OPS							
	EVENTS	COMMENTS	OPERATIONS	TOTAL STAGE 1 OPERATIONS	TOTAL STAGE 2 OPERATIONS	AA STAGE 1 (EXEMPT)	AA STAGE 2 (EXEMPT)	AA STAGE 3 OPERATIONS	EVENTS	COMMENTS	OPERATIONS	TOTAL STAGE 1 OPERATIONS	TOTAL STAGE 2 OPERATIONS	AA STAGE 1 (EXEMPT)	AA STAGE 2 (EXEMPT)	AA STAGE 3 OPERATIONS		STAGE 3 GA OPERATIONS	STAGE 3 AT OPERATIONS
Sun-01	3	3	380								3						1		383
Mon-02	4	4	363					1	1	10							3		373
Tue-03	2	2	364							13							2		377
Wed-04	9	10	430					2	1	1	29						3		459
Thu-05			382					1	3	3	11						10		393
Fri-06	1	1	202					2			6						2		208
Sat-07	1	1	301								6						2		307
Sun-08			214								10						4		224
Mon-09	2	2	360						4	6	8						7		368
Tue-10			402					1			2						1		404
Wed-11			288								4						3		292
Thu-12			339								13						2		352
Fri-13			290						2	2	8						4		298
Sat-14	1	1	213					1			5						1		218
Sun-15	2	2	294								1								295
Mon-16			272								1						1		273
Tue-17	2	2	333					1	1	1	5						3		338
Wed-18	1	1	283						1	1	3				2		1		286
Thu-19			262					1	1	3	5						1		267
Fri-20	1	1	296					1	1	1	9						3		305
Sat-21	2	2	109								14						2		123
Sun-22			130								2						1		132
Mon-23			253								4								257
Tue-24	1	1	313								0								313
Wed-25			306						2	3	8						5		314
Thu-26	1	1	379								5						3		384
Fri-27	2	2	316					1	1	1	10								326
Sat-28			222					1			2								224
Sun-29			122								1								123
Mon-30			195						2	2	2						2		197
TOTALS	35	36	8,613	0	0	0	1	12	20	25	200	0	0	0	0	2	67	0	8,813

COMMENTS	DAY	NIGHT	TOTAL
Events	35	20	55
Comments	36	25	61
Operations (Ops)	8,613	200	8,813
%Events/Ops	0.4%	10.0%	0.6%
Comments & Events	1.0	0.8	0.9
% Comments/ Ops	0.4%	12.5%	0.7%

NIGHT OPERATIONS		
Air Ambulance (AA)	J	2
EMS	H	9
Sheriff's Office	H	13
Mosquito Control	H	0
Mosquito Control	P	4
Military	H	2
<b>Public Service</b>	J,H,P	30
Non-Jet Air Carrier & GA	H,P	103
Total GA Jet Ops	J	67
Total AT Jet Ops	J	0
Total Jet Operations	J	67
<b>Night Ops - Total</b>	J,H,P	200

RESTRICTIONS	Violations	Letters
<b>Mandatory Restriction (MR)</b>		
Runups: Maintenance	0	0
Jet Stage 1 day & night Ops	0	0
Jet Stage 2 day & night Ops	0	0
<b>Voluntary Restriction (VR)</b>		
Non-exempt Operations	170	77

# NOISE COMMENTS & OPERATIONS SUMMARY

APPENDIX B

MONTH: May 2012

DATE	7 AM - 10 PM							10 PM - 7 AM							TOTAL OPERATIONS				
	JET+HELO+PROP			JET OPS				JET+HELO+PROP			JET OPS								
	EVENTS	COMMENTS	OPERATIONS	TOTAL STAGE 1 OPERATIONS	TOTAL STAGE 2 OPERATIONS	AA STAGE 1 (EXEMPT)	AA STAGE 2 (EXEMPT)	AA STAGE 3 OPERATIONS	EVENTS	COMMENTS	OPERATIONS	TOTAL STAGE 1 OPERATIONS	TOTAL STAGE 2 OPERATIONS	AA STAGE 1 (EXEMPT)		AA STAGE 2 (EXEMPT)	AA STAGE 3 OPERATIONS	STAGE 3 GA OPERATIONS	STAGE 3 AT OPERATIONS
Tue-01			251							4							2		255
Wed-02			232							6						1			238
Thu-03	1	1	354							6						1	2		360
Fri-04			318							16							3		334
Sat-05			296							3							1		299
Sun-06	1	1	222							3									225
Mon-07			259							4									263
Tue-08			306							3							2		309
Wed-09	1	1	273							3									276
Thu-10			294							10							1		304
Fri-11			228							4							1		232
Sat-12			164							4									168
Sun-13			134							0									134
Mon-14			212							5								1	217
Tue-15			256							1									257
Wed-16			177							9							1		186
Thu-17			235							7							2		242
Fri-18			219							8							1		227
Sat-19			197							9							4		206
Sun-20			150							1									151
Mon-21			240							1									241
Tue-22			219															1	226
Wed-23			216						1	5	7						2		220
Thu-24			243							4							3		220
Fri-25			292							9							4		252
Sat-26			251						1	2	7						1		299
Sun-27	1	1	126							1	1	6							257
Mon-28			283							5							1		131
Tues-29			244							12									295
Wed-30			193							2							1		246
Thurs-31			241						1	1	5								198
TOTALS	4	4	7,325	0	0	0	0	7	4	9	167	0	0	0	0	2	32	0	7,492

COMMENTS	DAY	NIGHT	TOTAL
Events	4	4	8
Comments	4	9	13
Operations (Ops)	7,325	167	7,492
%Events/Ops	0.1%	2.4%	0.1%
Comments & Events	1.0	0.4	0.6
% Comments/ Ops	0.1%	5.4%	0.2%

NIGHT OPERATIONS	Category	Count
Air Ambulance (AA)	J	2
EMS	H	25
Sheriff's Office	H	29
Mosquito Control	H	0
Mosquito Control	P	24
Military	H	0
<b>Public Service</b>	J,H,P	80
Non-Jet Air Carrier & GA	H,P	55
Total GA Jet Ops	J	32
Total AT Jet Ops	J	0
Total Jet Operations	J	32
<b>Night Ops - Total</b>	J,H,P	167

RESTRICTIONS	Violations	Letters
<b>Mandatory Restriction (MR)</b>		
Runups: Maintenance	0	0
Jet Stage 1 day & night Ops	0	0
Jet Stage 2 day & night Ops	0	0
<b>Voluntary Restriction (VR)</b>		
Non-exempt Operations	87	43

# NOISE COMMENTS & OPERATIONS SUMMARY

APPENDIX B

MONTH: June 2012

DATE	7 AM - 10 PM								10 PM - 7 AM								TOTAL OPERATIONS		
	JET+HELO+PROP			JET OPS					JET+HELO+PROP			JET OPS							
	EVENTS	COMMENTS	OPERATIONS	TOTAL STAGE 1 OPERATIONS	TOTAL STAGE 2 OPERATIONS	AA STAGE 1 (EXEMPT)	AA STAGE 2 (EXEMPT)	AA STAGE 3 OPERATIONS	EVENTS	COMMENTS	OPERATIONS	TOTAL STAGE 1 OPERATIONS	TOTAL STAGE 2 OPERATIONS	AA STAGE 1 (EXEMPT)	AA STAGE 2 (EXEMPT)	AA STAGE 3 OPERATIONS		STAGE 3 GA OPERATIONS	STAGE 3 AT OPERATIONS
Fri-01			209								4						1		213
Sat-02			191								5								196
Sun-03			160								5						1		165
Mon-04			212						2	2	4						2		216
Tues-05			209								2						1		211
Wed-06			182								3						1		185
Thur-07			188								5								193
Fri-08			161						1	1	3								164
Sat-09			176																176
Sun-10			81								2						1		83
Mon-11			237								4								241
Tues-12			207								7								214
Wed-13			214																214
Thur-14			201						1	1	6						2		207
Fri-15			175								4								179
Sat-16			133						1	1	7								140
Sun-17			137								2						2		139
Mon-18			178								5						1		183
Tues-19			182								5								187
Wed-20			88						1	1	3						1		91
Thur-21	1	1	174						1	5	2								176
Fri-22			170						2	2	5								175
Sat-23			90								2						1		92
Sun-24			23								1						1		24
Mon-25			38						1	1	1						1		39
Tues-26			48								3								51
Wed-27			190								1						1		191
Thur-28			212								8								220
Fri-29			228								10						1		238
Sat-30			222								6								228
<b>TOTALS</b>	<b>1</b>	<b>1</b>	<b>4,916</b>	<b>0</b>	<b>0</b>	<b>0</b>	<b>0</b>	<b>0</b>	<b>10</b>	<b>14</b>	<b>115</b>	<b>0</b>	<b>0</b>	<b>0</b>	<b>0</b>	<b>0</b>	<b>18</b>	<b>0</b>	<b>5,031</b>

COMMENTS	DAY	NIGHT	TOTAL
Events	1	10	11
Comments	1	14	15
Operations (Ops)	4,916	115	5,031
%Events/Ops	0.0%	8.7%	0.2%
Comments & Events	1.0	0.7	0.7
% Comments/ Ops	0.0%	12.2%	0.3%

NIGHT OPERATIONS		
Air Ambulance (AA)	J	0
EMS	H	2
Sheriff's Office	H	18
Mosquito Control	H	0
Mosquito Control	P	20
Military		0
<b>Public Service</b>	J,H,P	40
Non-Jet Air Carrier & GA	H,P	57
Total GA Jet Ops	J	18
Total AT Jet Ops	J	0
Total Jet Operations	J	18
<b>Night Ops - Total</b>	J,H,P	115

RESTRICTIONS	Violations	Letters
<b>Mandatory Restriction (MR)</b>		
Runups: Maintenance	0	0
Jet Stage 1 day & night Ops	0	0
Jet Stage 2 day & night Ops	0	0
<b>Voluntary Restriction (VR)</b>		
Non-exempt Operations	75	39