



CITY OF NAPLES AIRPORT AUTHORITY

QUARTERLY NOISE REPORT

NUMBER 56

For the period

October 1, 2010 through December 31, 2010

Prepared by the
Noise Abatement Office

TABLE OF CONTENTS

	Page
INTRODUCTION	1
PART I AIRCRAFT OPERATIONS	1
Figure IA Total Monthly Operations	1
Figure IB Total Night Operations by Month	2
Table I Quarterly Air Traffic Nighttime Operations Summary	3
Table II Fiscal Year Percentage of Nighttime Operations	3
PART II CITIZEN COMMENTS	4
Figure IIA Noise Comments by Geographical Area	5
PART III COMMENTS BY TIMEFRAME	6
Figure IIIA Noise Comments by Hour	6
Figure IIIB Noise Comments by Month	6
PART IV COMMENTS BY OPERATIONAL SOURCE	7
Figure IVA Comments by Type Aircraft	7
PART V COMMENTS BY OPERATION AND NATURE OF DISTURBANCE	8
Figure V Comments by Operations	8
Figure VI Comments by Nature of Disturbance	8
Appendix A Total Aircraft Operations and Comments	
Appendix B Noise Comment / Operations Summary (Oct, Nov, Dec)	

PART I AIRCRAFT OPERATIONS

INTRODUCTION

This is the fifty-sixth Quarterly Noise Report prepared by the City of Naples Airport Authority - Noise Abatement Office. This report is informational in nature. The information contained in this report is for the first quarter of fiscal year 2011 (October thru December). All percentages are rounded to the nearest percent.

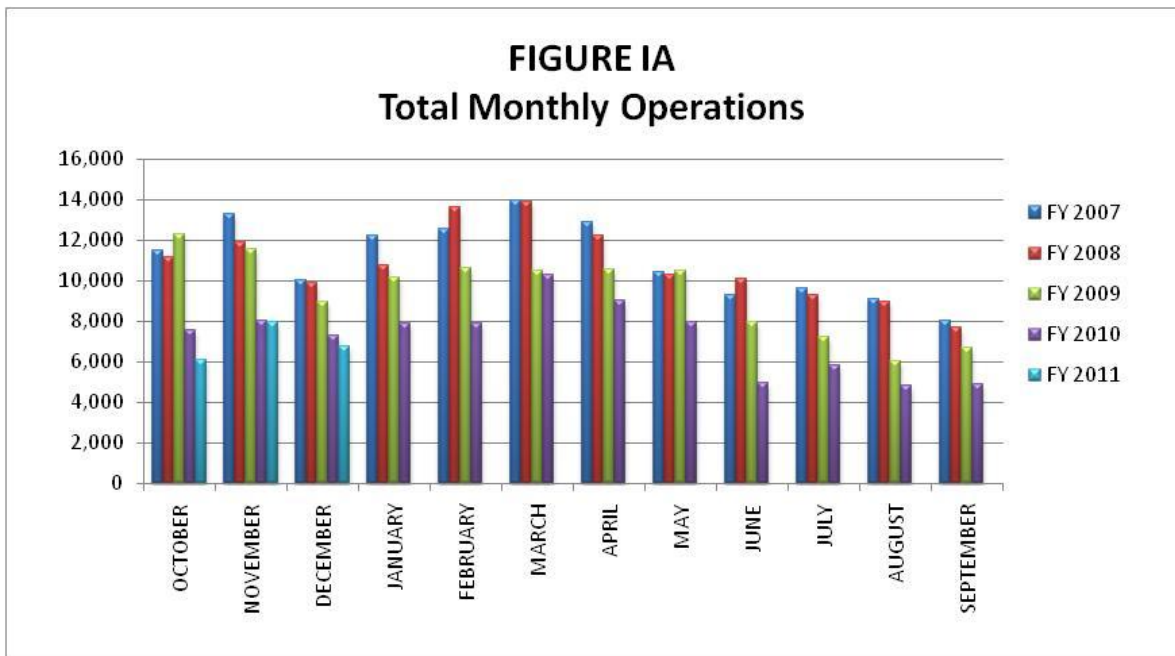
AIRCRAFT OPERATIONS

Figure 1A below contains aircraft movement data from FAA Form 7230-1 and after hour statistics recorded by the City of Naples Airport Authority Security Officers. Naples Air Traffic Control Tower is operational from 6:00 AM through 10:00 PM. A single movement represents either one arrival or one departure by the indicated aircraft.

This Quarter Compared to the Same Period One Year Ago

Compared to the same period last year, air carrier traffic (non-scheduled operators) has increased by 4% and general aviation air traffic has decreased by 10%. Total air traffic operations decreased by 9% from 22,823 operations to 20,772.

Figure 1A below illustrates the airport's month-by-month total operational levels for fiscal years 2007, 2008, 2009, 2010 and 2011.



Night Time Operations

Figure IB, below, illustrates the airport's monthly nighttime (10:00 PM – 7:00 AM) operational levels for fiscal year 2007, 2008, 2009, 2010 and 2011.

Total nighttime operations have decreased by 13% in the First Quarter of 2011 when compared to the First Quarter 2010 statistics. Jet operations occurring at night decreased by 42 operations, or 14%, and single and multi-engine aircraft operations decreased by 33 operations, or seventeen percent (17%).

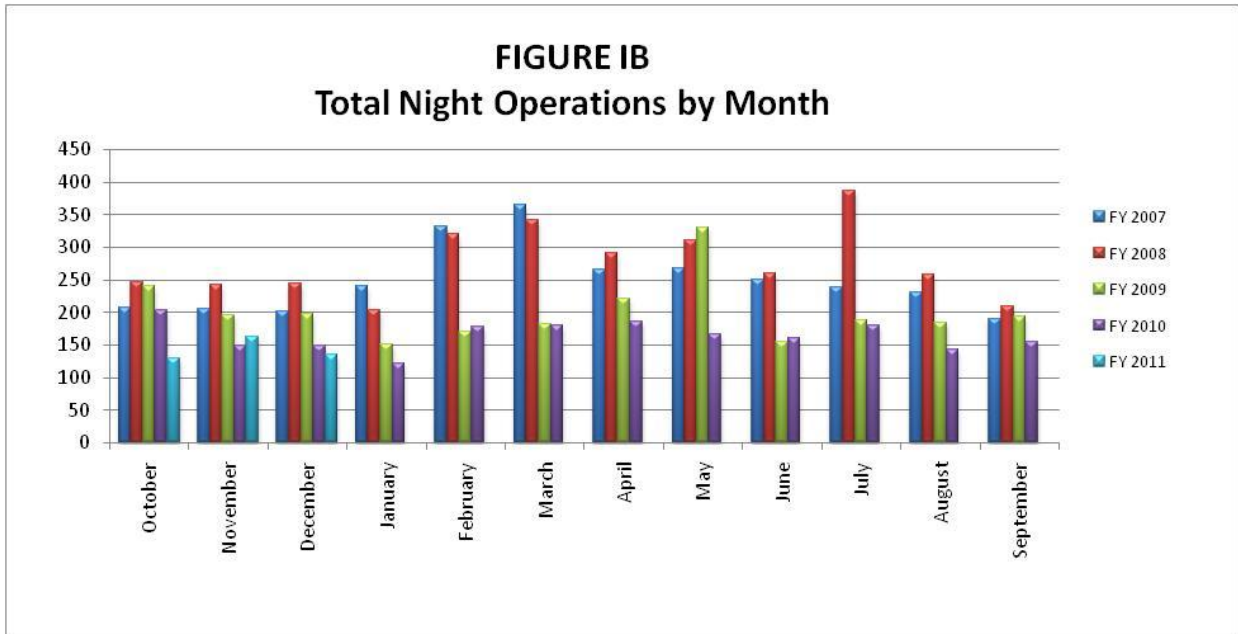


Table I, below, summarizes the types of nighttime operations occurring at the airport during the previous five quarters. Nighttime operations include voluntary curfew hours (10:00 PM through 7:00 AM). Public Service operations represent 35% of the activity occurring at night and nighttime operations accounted for two percent (2%) of the overall operations for the First Quarter of 2011.

Table I
Quarterly Air Traffic Nighttime Operations Summary – by Fiscal Year

Activity	1 st 2010	2 nd 2010	3 rd 2010	4 th 2010	1 st 2011	1st Quarter 2011 vs. 2010
Jets						
Air Ambulance	0	4	2	0	8	NMF
Air Carrier	0	0	0	0	0	NMF
GA	152	199	104	48	152	0%
Subtotal Jets	152	203	106	47	160	5%
Single & Multi-engine (includes air carrier & GA)	192	158	233	171	137	(29%)
Public Service						
Mosquito Control Ops	11	0	9	99	16	46%
Collier Sheriff's Office	100	87	120	116	89	(11%)
EMS	44	31	42	43	28	(36%)
Coast Guard	0	0	2	1	2	NMF
Subtotal Public Service	155	118	173	259	135	(13%)
Total	499	479	512	477	432	(13%)

NMF = No Meaningful Figure

Table II, depicts the percentage of nighttime operations as compared to total operations for the last nine fiscal years. Night operations represent three percent (3%) for FY 02 – 03 and two percent (2%) of the total operations for FY 04, FY 05, FY 06, FY 07, FY 08, FY 09, FY 10 and FY 11.

Table II
Fiscal Year Percentage of Nighttime Operations

Fiscal Year	Total Operations	Night Operations	% of Night Ops	% of Jet Night Ops
2002	138,790	3,626	3%	21%
2003	112,308	3,170	3%	23%
2004	136,128	3,361	2%	23%
2005	163,434	3,130	2%	34%*
2006	137,908	2,935	2%	38%*
2007	132,908	2,994	2%	29%*
2008	129,731	3,314	2%	24%
2009	112,903	2,407	2%	21%
2010	86,187	1,973	2%	26%
2011 to date	20,772	432	2%	37%

* Delta began CRJ service in FY05. They had 328 nighttime operations in FY 05, 352 nighttime operations in FY 06 and 117 nighttime operations in FY 07. Without Delta's operations, the percentage of jet night operations in FY05 would have been twenty-four percent (24%) of the total nighttime operations and twenty-six percent (26%) of the total in FY 06 and twenty-five percent (25%) of the total in FY 07.

PART II CITIZEN COMMENTS

Citizen noise comments are separated according to four geographical areas (Quadrants). Below is a sample representation of the neighborhoods in each Quadrant. Every neighborhood in the area is not included in this list, although it is included in the Quadrant total.

Northeast Quadrant - Briarwood, Coconut River Estates, Golden Gate, Grey Oaks, Hawks Ridge, Wyndemere, and surrounding northeast areas.

Northwest Quadrant - Bears Paw, Coconut River Estates, Coquina Sands, Country Club of Naples, Lake Forest, Lake Park, Park Shore, Ridge Lakes, River Estates, River Reach, Sun Terrace, Moorings, Wilderness, and surrounding northwest areas.

Southwest Quadrant - Aqualane Shores, Old Naples, Port Royal, Royal Harbor, and surrounding southwest neighborhoods.

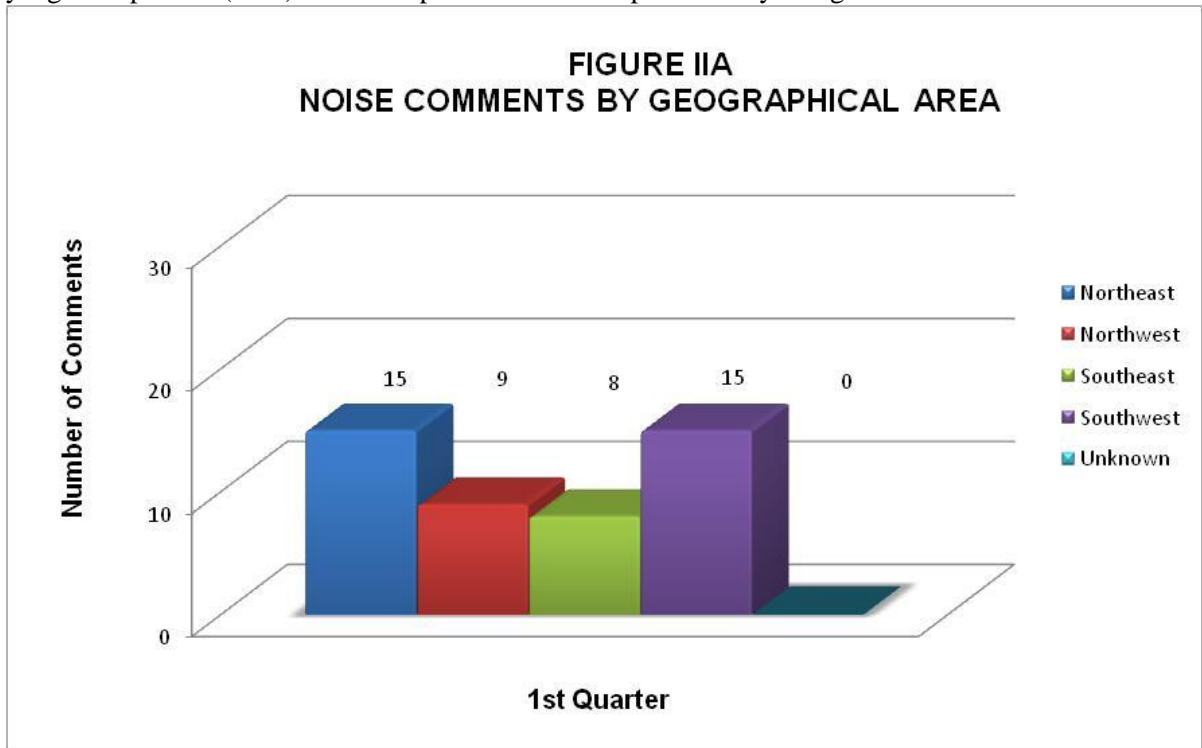
Southeast Quadrant - Brookside, Coconut Grove, Flamingo Estates, Foxfire, Kings Lake, Lakewood, Naples Gardens, Rock Creek Campground, The Glades, and surrounding neighborhoods.

The analysis will include the specific nature of the comment, whether it was an arriving or departing aircraft or an overflight. Comments relative to nighttime Mosquito Control operations, Air Ambulance Flights, Sheriff's Office and EMS helicopter operations are included in this report. Thanks to Mosquito Control publishing their flight operations, our noise comments have decreased.

This Quarter Compared to the Same Period One Year Ago

Compared to the same period last year, the net total number of comments increased by 7 calls, from 40 to 47 (or 18%) even though total operations have decreased by 9% and nighttime operations have decreased by 13%. Comments received from neighborhoods to the northeast of the airport have decreased by 8, from the northwest they increased by 8, from the southeast they increased by 7, from the southwest they stayed the same.

Figure IIA, below, graphically compares the noise comments received by geographical areas based on data collected during the First Quarter of 2011. Total comments for this quarter have increased by eighteen percent (18%) when compared to the same period one year ago.



PART III
COMMENTS BY TIMEFRAME

Figure IIIA, below, depicts noise comments for the First Quarter according to the time of the single event. The highest number of comments were received during the 5:00 PM hour. Twenty-six percent (26%) of the total comments were received during the voluntary curfew hours.

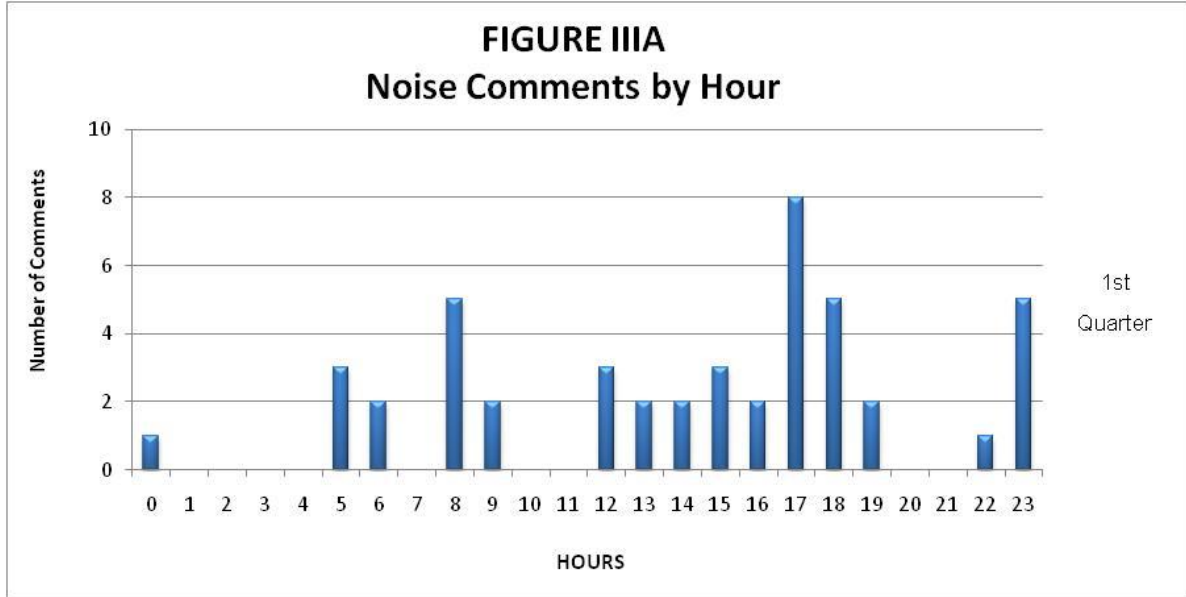
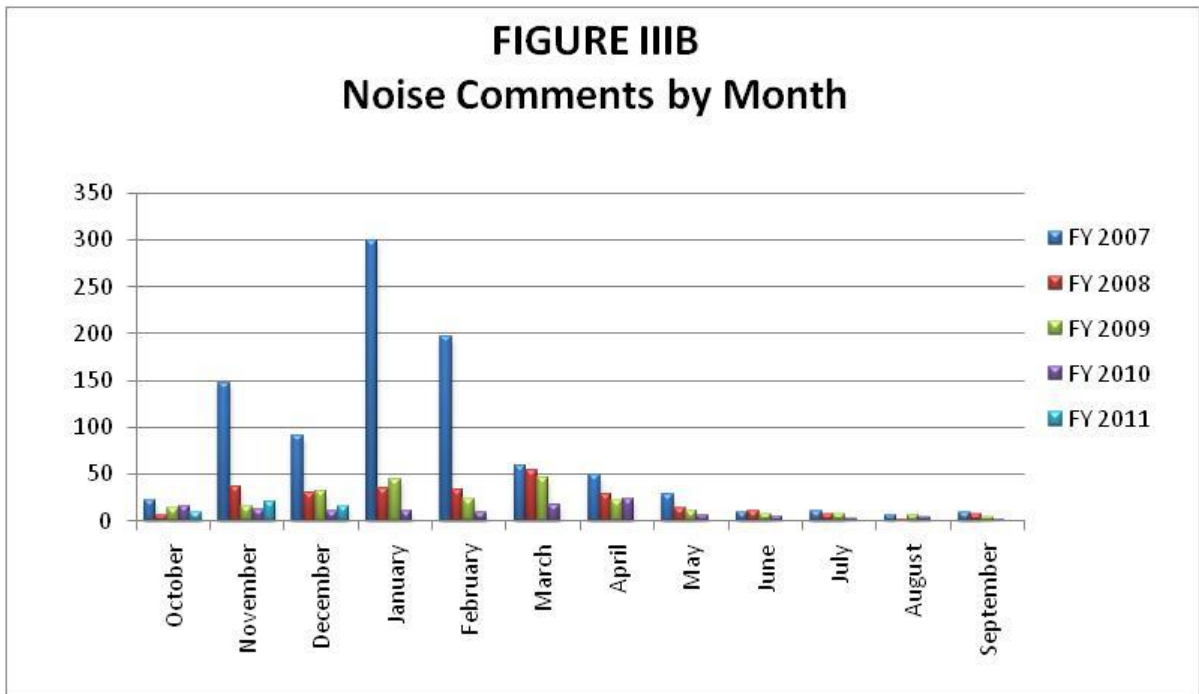
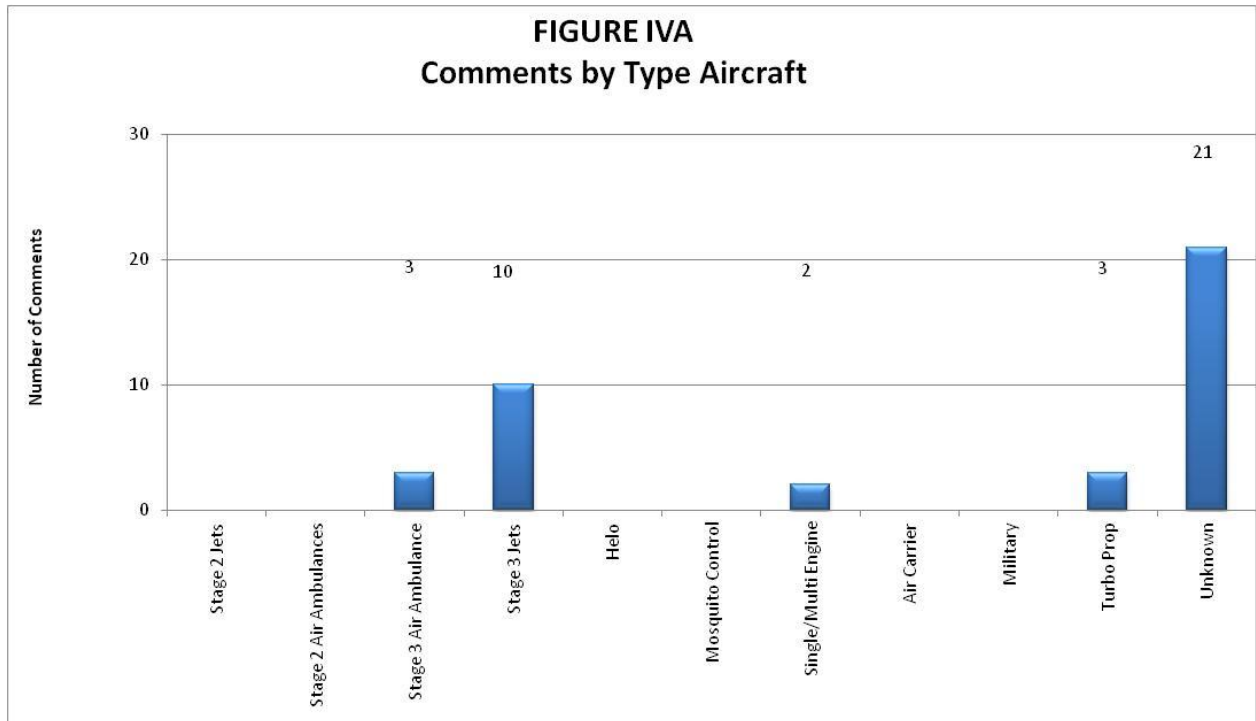


Figure IIIB below, illustrates the airport’s comment volume for fiscal years 2007, 2008, 2009, 2010 and 2011.



PART IV COMMENTS BY OPERATIONAL SOURCE

Figure IVA below indicates which types of aircraft the callers were calling about. Forty-six percent (46%) of the comments were about unknown operations (or multiple aircraft, not one aircraft in particular).



PART V
COMMENTS BY OPERATION AND NATURE OF DISTURBANCE

Figure V below, shows the operational source of the noise comments from the First Quarter of 2011. The data indicates that arrivals account for the main operational source of comments.

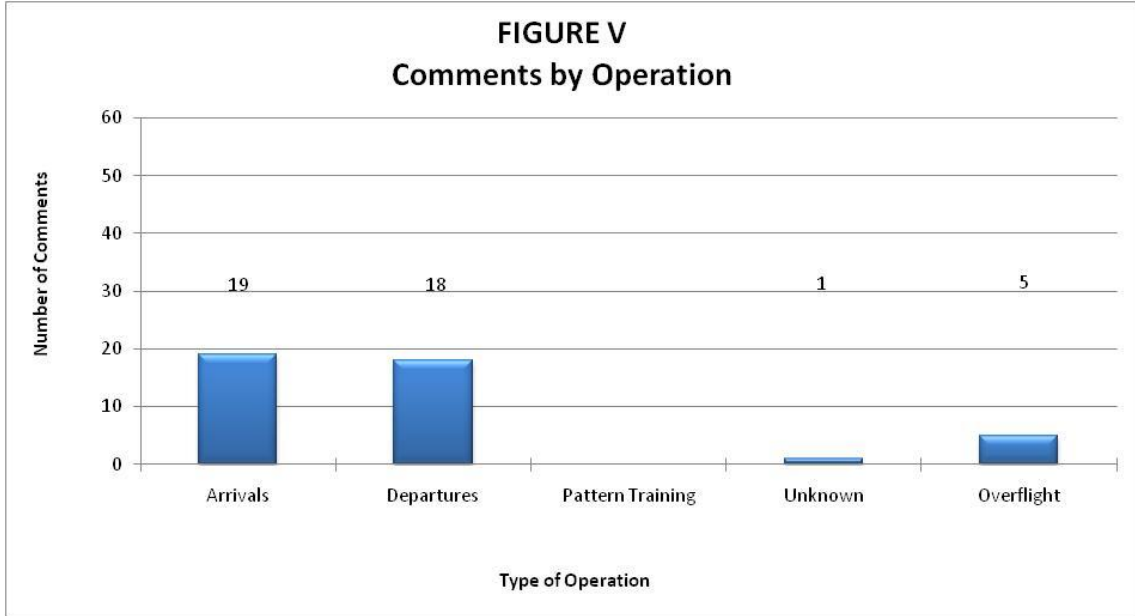
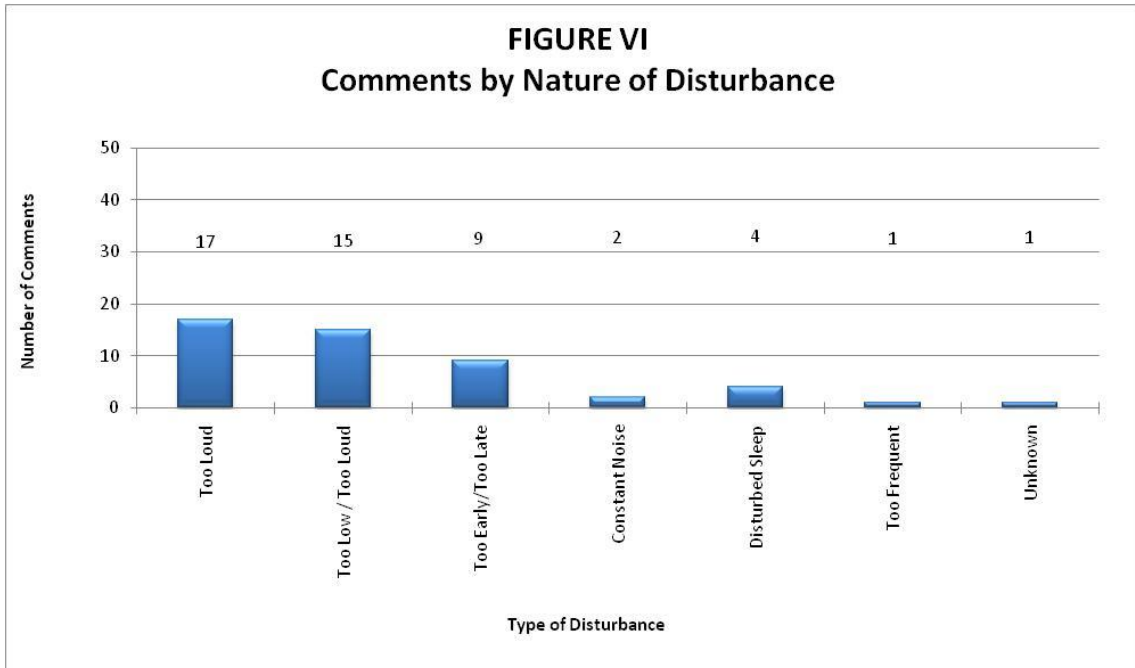
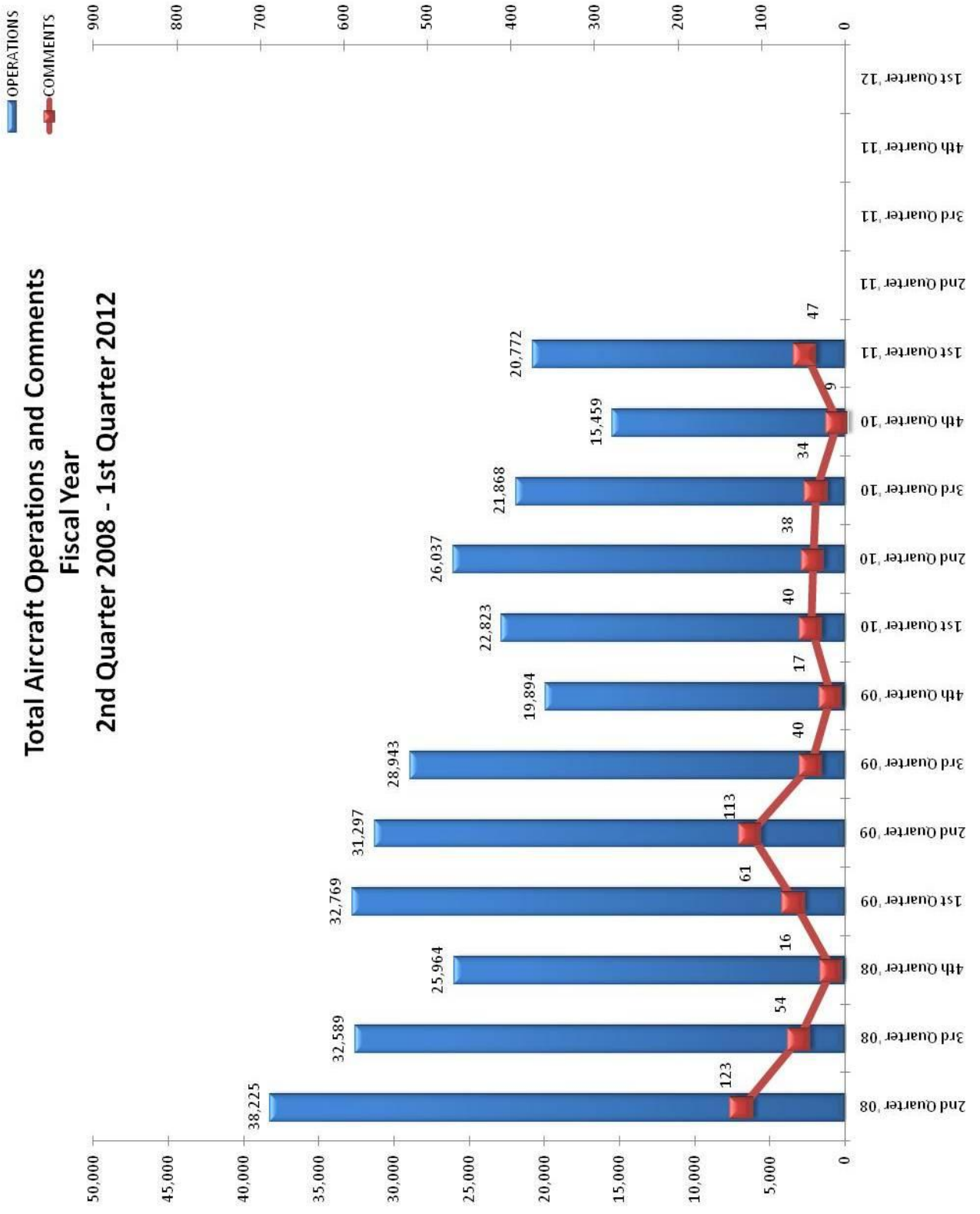


Figure VI below indicates the nature of the disturbances from callers during this quarter.



Total Aircraft Operations and Comments Fiscal Year 2nd Quarter 2008 - 1st Quarter 2012



Part 150 Study Update begins - February

NOISE COMPLAINTS & OPERATIONS SUMMARY

APPENDIX C

MONTH: October 2010

DATE	7 AM - 10 PM							10 PM - 7 AM							TOTAL OPERATIONS				
	JET+HELO+PROP			JET OPS				JET+HELO+PROP			JET OPS								
	EVENTS	COMPLAINTS	OPERATIONS	TOTAL STAGE 1 OPERATIONS	TOTAL STAGE 2 OPERATIONS	AA STAGE 1 (EXEMPT)	AA STAGE 2 (EXEMPT)	AA STAGE 3 OPERATIONS	EVENTS	COMPLAINTS	OPERATIONS	TOTAL STAGE 1 OPERATIONS	TOTAL STAGE 2 OPERATIONS	AA STAGE 1 (EXEMPT)		AA STAGE 2 (EXEMPT)	AA STAGE 3 OPERATIONS	STAGE 3 GA OPERATIONS	STAGE 3 AT OPERATIONS
Fri-01	1	1	219							3									222
Sat-02			218							5							1		223
Sun-03			171					1		9							1		180
Mon-04			146							1									147
Tues-05			143							2							1		145
Wed-06			133																133
Thur-07			289							2							1		291
Fri-08			215							2									217
Sat-09			148							2									150
Sun-10			151							3							1		154
Mon-11			147							2							1		149
Tues-12			156						1	1	3								159
Wed-13			146							9							1		155
Thur-14			188							6									194
Fri-15			299							3							2		302
Sat-16			183							3							1		186
Sun-17			184							3							2		187
Mon-18			5							3									8
Tues-19			195						1	1	2						2		197
Wed-20	1	1	266							1							1		267
Thur-21	2	2	211							2									213
Fri-22			227							2							1		229
Sat-23			205							14							1		219
Sun-24			172							9									181
Mon-25	3	3	232							5							2		237
Tues-26			180							5									185
Wed-27	1	1	223							6							6		229
Thur-28			228							9							2		237
Fri-29			234							7									241
Sat-30			224							8							3		232
Sun-31			230							1									231
TOTALS	8	8	5,968	0	0	0	0	1	2	2	132	0	0	0	0	0	30	0	6,100

COMPLAINTS			
	DAY	NIGHT	TOTAL
Events	8	2	10
Complaints	8	2	10
Operations (Ops)	5,968	132	6,100
%Events/Ops	0.1%	1.5%	0.2%
Complaints & Events	10	10	10
%Complaints/ Ops	0.1%	1.5%	0.2%

NIGHT OPERATIONS		
Air Ambulance (AA)	J	0
EMS	H	7
Sheriff's Office	H	29
Mosquito Control	H	0
Mosquito Control	P	14
Public Service	J,H,P	50
Non-Jet Air Carrier & GA	H,P	52
Total GA Jet Ops	J	30
Total AT Jet Ops	J	0
Total Jet Operations	J	30
Night Ops - Total	J,H,P	132

RESTRICTIONS		Violations	Letters
Mandatory Restriction (MR)			
Runups: Maintenance		0	0
Jet Stage 1 day & night Ops		0	0
Jet Stage 2 day & night Ops		0	0
Voluntary Restriction (VR)			
Jet Stage 3 night Ops		103	26

NOISE COMPLAINTS & OPERATIONS SUMMARY

APPENDIX C

MONTH: November 2010

DATE	7 AM - 10 PM							10 PM - 7 AM							TOTAL OPERATIONS				
	JET+HELO+PROP			JET OPS				JET+HELO+PROP			JET OPS								
	EVENTS	COMPLAINTS	OPERATIONS	TOTAL STAGE 1 OPERATIONS	TOTAL STAGE 2 OPERATIONS	AA STAGE 1 (EXEMPT)	AA STAGE 2 (EXEMPT)	AA STAGE 3 OPERATIONS	EVENTS	COMPLAINTS	OPERATIONS	TOTAL STAGE 1 OPERATIONS	TOTAL STAGE 2 OPERATIONS	AA STAGE 1 (EXEMPT)		AA STAGE 2 (EXEMPT)	AA STAGE 3 OPERATIONS	STAGE 3 GA OPERATIONS	STAGE 3 AT OPERATIONS
Mon-01			238								16						1		254
Tues-02			213								4						1		217
Wed-03			323								12						4		335
Thur-04			180						2	2	8						7		188
Fri-05			312								10						3		322
Sat-06			187								5						1		192
Sun-07			230								3								233
Mon-08			285								2								287
Tues-09			351								6						1		357
Wed-10			313								2								315
Thur-11			346								1					1			356
Fri-12	1	1	343								10						5		348
Sat-13	1	1	222								8						2		230
Sun-14	1	1	221								2								223
Mon-15			214								4						1		218
Tues-16			259								6						1		265
Wed-17	2	2	273								1								274
Thur-18			216						1	1	12					1	2		228
Fri-19			324								10					1	2		334
Sat-20			257								4						1		261
Sun-21	1	3	215								5								220
Mon-22			270								3						2		273
Tues-23			340						1	1	3						2		343
Wed-24			317						2	2	6						4		323
Thur-25			101								3						1		104
Fri-26			209								3						2		212
Sat-27	1	1	171								3						1		174
Sun-28	3	3	363								4						1		367
Mon-29			219								2								221
Tues-30			269								1								270
TOTALS	10	12	7,781	0	0	0	5	2	9	9	163	0	0	0	0	2	46	0	7,944

COMPLAINTS			
	DAY	NIGHT	TOTAL
Events	10	9	19
Complaints	12	9	21
Operations (Ops)	7,781	163	7,944
%Events/Ops	0.1%	5.5%	0.2%
Complaints & Events	12	10	11
%Complaints/ Ops	0.2%	5.5%	0.3%

NIGHT OPERATIONS		
Air Ambulance (AA)	J	2
EMS	H	5
Sheriff's Office	H	34
Mosquito Control	H	0
Mosquito Control	P	2
Public Service	J,H,P	43
Non-Jet Air Carrier & GA	H,P	46
Total GA Jet Ops	J	74
Total AT Jet Ops	J	0
Total Jet Operations	J	76
Night Ops - Total	J,H,P	163

RESTRICTIONS		Violations	Letters
Mandatory Restriction (MR)			
Runups: Maintenance		0	0
Jet Stage 1 day & night Ops		0	0
Jet Stage 2 day & night Ops		0	0
Voluntary Restriction (VR)			
Jet Stage 3 night Ops		129	34

NOISE COMPLAINTS & OPERATIONS SUMMARY

APPENDIX C

MONTH: December 2010

DATE	7 AM - 10 PM							10 PM - 7 AM							TOTAL OPERATIONS				
	JET+HELO+PROP			JET OPS				JET+HELO+PROP			JET OPS								
	EVENTS	COMPLAINTS	OPERATIONS	TOTAL STAGE 1 OPERATIONS	TOTAL STAGE 2 OPERATIONS	AA STAGE 1 (EXEMPT)	AA STAGE 2 (EXEMPT)	AA STAGE 3 OPERATIONS	EVENTS	COMPLAINTS	OPERATIONS	TOTAL STAGE 1 OPERATIONS	TOTAL STAGE 2 OPERATIONS	AA STAGE 1 (EXEMPT)		AA STAGE 2 (EXEMPT)	AA STAGE 3 OPERATIONS	STAGE 3 GA OPERATIONS	STAGE 3 AT OPERATIONS
Wed-01			183								9						3		192
Thur-02			318								5					2			323
Fri-03			237								6						3		243
Sat-04			218								9						3		227
Sun-05			220					1			11				2				231
Mon-06			177								3						1		180
Tue-07			286								1								287
Wed-08			376								3						1		379
Thur-09			149								3						1		152
Fri-10	6	6	260						1	1	3						1		263
Sat-11			196								3								199
Sun-12			146								6						1		152
Mon-13			102								4						3		106
Tue-14			230								6						4		236
Wed-15			235								2								237
Thur-16	1	1	212					1			6						1		218
Fri-17			261								7						4		268
Sat-18	1	1	150								0								150
Sun-19			119								4						1		123
Mon-20			202						1	1	3						3		205
Tue-21			189								0								189
Wed-22	1	1	223								5				1				228
Thu-23	2	2	151								2				1	1			153
Fri-24			118								3								121
Sat-25			87								3						2		90
Sun-26			199								3						2		202
Mon-27	1	1	266								4						2		270
Tue-28			323								7						3		330
Wed-29			291								5						4		296
Thu-30	1	1	258								7						3		265
Fri-31	1	1	211								2						1		213
TOTALS	14	14	6,593	0	0	0	2	3	2	2	135	0	0	0	0	6	48	0	6,728

COMPLAINTS			
	DAY	NIGHT	TOTAL
Events	14	2	16
Complaints	14	2	16
Operations (Ops)	6,593	135	6,728
%Events/Ops	0.2%	15%	0.2%
Complaints & Events	10	10	10
%Complaints/ Ops	0.2%	15%	0.2%

NIGHT OPERATIONS		
Air Ambulance (AA)	J	6
EMS	H	16
Sheriff's Office	H	26
Mosquito Control	H	0
Mosquito Control	P	0
Public Service	J,H,P	48
Non-Jet Air Carrier & GA	H,P	39
Total GA Jet Ops	J	48
Total AT Jet Ops	J	0
Total Jet Operations	J	54
Night Ops - Total	J,H,P	135

RESTRICTIONS		Violations	Letters
Mandatory Restriction (MR)			
Runups: Maintenance		0	0
Jet Stage 1 day & night Ops		0	0
Jet Stage 2 day & night Ops		0	0
Voluntary Restriction (VR)			
Jet Stage 3 night Ops		109	31