



CITY OF NAPLES AIRPORT AUTHORITY

QUARTERLY NOISE REPORT

NUMBER 45

For the period

January 1, 2008 through March 31, 2008

Prepared by the
Noise Abatement Office

TABLE OF CONTENTS

	Page
INTRODUCTION	1
PART I AIRCRAFT OPERATIONS	1
Table I	Airport Traffic Summary 2
Figure IA	Total Monthly Operations 3
Figure IB	Total Night Operations by Month 4
Table II	Quarterly Air Traffic Nighttime Operations Summary 5
Figure IC	Fiscal year Air Traffic Nighttime Operations 5
Table IIA	Fiscal Year Percentage of Nighttime Operations 6
PART II CITIZEN COMPLAINTS	7
Table III	Airport Noise Complaint Summary 8
Figure IIA	Noise Complaints by Geographical Area 9
PART III COMPLAINTS BY TIMEFRAME	10
Figure IIIA	Noise Complaints by Hour 10
Figure IIIB	Noise Complaints by Month 10
PART IV COMPLAINTS BY OPERATIONAL SOURCE	11
Figure IVA	Complaints by Type Aircraft 11
Figure IVB	Air Ambulance Operations & Complaints 11
PART V COMPLAINTS BY OPERATION AND NATURE OF DISTURBANCE	12
Figure V	Complaints by Operations 12
Figure VI	Complaints by Nature of Disturbance 12
SUMMARY	13 & 14
Appendix A	Total Aircraft Operations and Complaints
Appendix B	Noise Complaints vs. Number of Households
Appendix C	Noise Complaint / Operations Summary (Jan./Feb./March)

PART I AIRCRAFT OPERATIONS

INTRODUCTION

This is the forty-fifth Quarterly Noise Report prepared by the City of Naples Airport Authority - Noise Abatement Office. This report is informational in nature. The data included in this report tracks aircraft operations and noise complaints. The information contained in this report is fiscal year (Oct. – Sept.). All percentages are rounded to the nearest percent.

AIRCRAFT OPERATIONS

Table I, page 2, Airport Traffic Summary, contains aircraft movement data from FAA Form 7230-1 and after hour statistics recorded by the City of Naples Airport Authority Security Officers. Naples Air Traffic Control Tower is operational from 6:00 AM through 10:00 PM. A single movement represents either one arrival or one departure by the indicated aircraft category.

This Quarter Compared to Previous Quarter

Compared to the previous quarter, air carrier traffic has increased by 62%; general aviation activity has increased by 11% and total traffic increased by 16%, from 32,953 operations to 38,225. The daily average for the Second Quarter was 421 operations.

This Quarter Compared to the Same Period One Year Ago

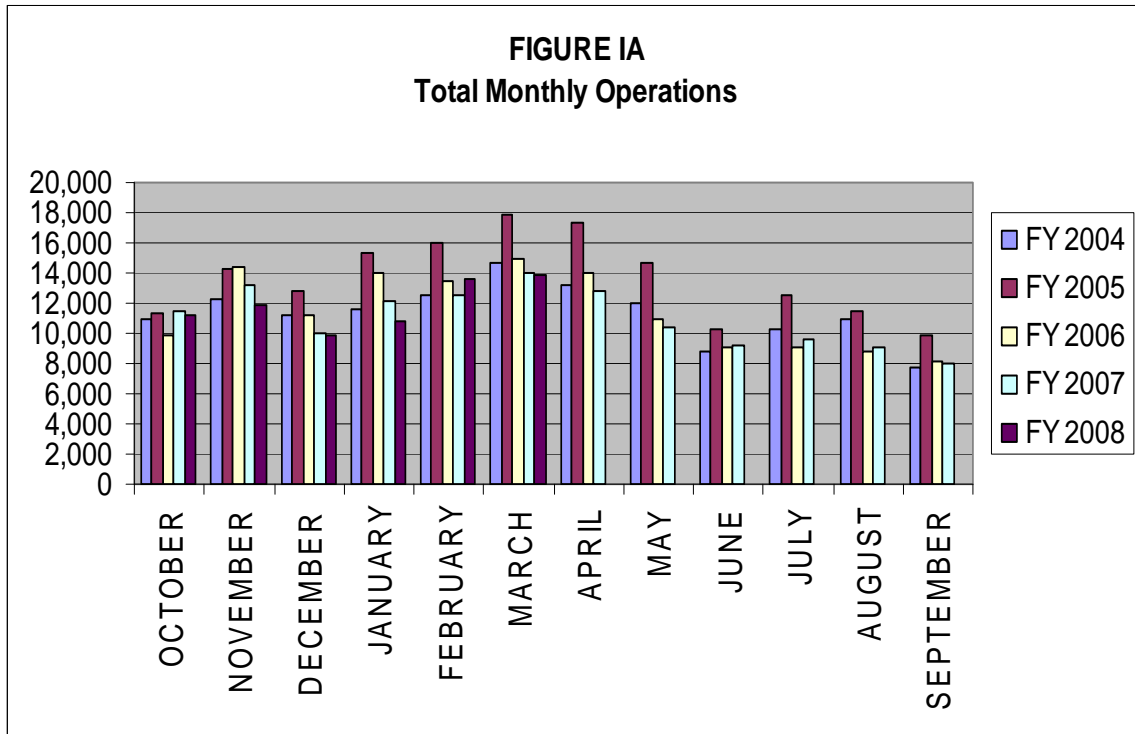
Compared to the same period last year, air carrier traffic has increased by 16% and general aviation air traffic has decreased 3%. Total air traffic operations decreased by 1% from 38,655 operations to 38,225.

Table I

AIRPORT TRAFFIC SUMMARY
Landings and Takeoffs
Fiscal Years 2007-2008

YEAR	AIR CARRIER	GENERAL AVIATION	MILITARY	TOTAL TRAFFIC	DAILY AVERAGE
2007					
JANUARY	1,286	10,902	10	12,198	393
FEBRUARY	1,449	11,068	6	12,523	447
MARCH	1,538	12,392	4	13,934	450
TOTALS FOR 2nd QUARTER	4,273	34,362	20	38,655	430
APRIL	1,431	11,422	4	12,857	429
MAY	990	9,451	1	10,442	337
JUNE	536	8,708	4	9,248	308
TOTALS FOR 3rd QUARTER	2,957	29,581	9	32,547	358
JULY	520	9,108	1	9,629	311
AUGUST	457	8,637	2	9,096	293
SEPTEMBER	399	7,634	4	8,037	268
TOTALS FOR 4th QUARTER	1,376	25,379	7	26,762	291
TOTALS FOR FY07	11,544	121,138	57	132,739	365
2008					
OCTOBER	718	10,420	7	11,145	360
NOVEMBER	1,234	10,664	7	11,905	397
DECEMBER	1,119	8,777	7	9,903	320
TOTALS FOR 1st QUARTER	3,071	29,861	21	32,953	359
JANUARY	1,331	9,425	8	10,764	347
FEBRUARY	1,679	11,913	4	13,596	469
MARCH	1,954	11,899	12	13,865	447
TOTALS FOR 2nd QUARTER	4,964	33,237	24	38,225	421

Figure IA below illustrates the airport's month-by-month total operational levels for fiscal years 2004, 2005, 2006, 2007 and 2008.



There was a 1% decrease in overall airport operations during the Second Quarter of 2008, when compared to the same period in 2007.

Night Time Operations

Figure IB, below, illustrates the airport's total nighttime (10:00 PM – 7:00 AM) operational levels for fiscal year 2004, 2005, 2006, 2007 and 2008.

Total nighttime operations have decreased by eight percent (8%) in the Second Quarter of 2008 when compared to the Second Quarter 2007 statistics. Jet operations occurring at night decreased by 42 operations and single and multi-engine aircraft operations decreased by 34.

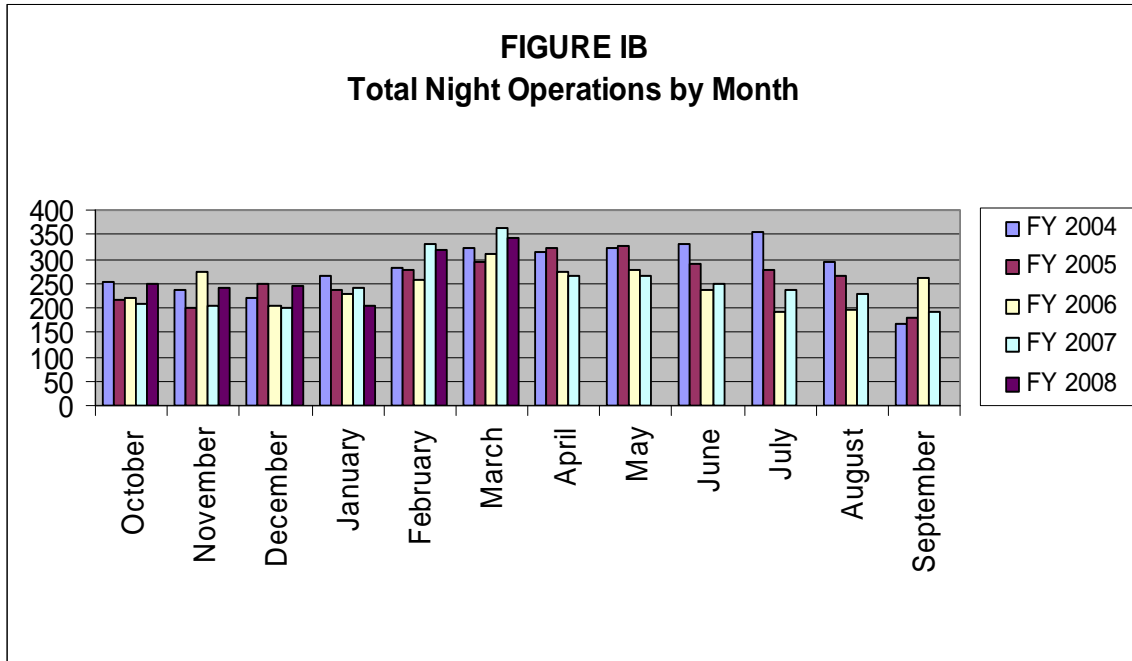


Table II, below, summarizes the types of nighttime operations occurring at the airport during the previous five quarters. Nighttime operations include voluntary curfew hours (10:00 PM through 7:00 AM). Reported nighttime operations have decreased by 8% when compared to the same time last year. Air carrier operations have had a reduction of ten operations due to Delta no longer operating at the airport. General aviation jet traffic has decreased by ten percent (10%) and single and multi-engine aircraft operations have decreased by eight percent (8%).

Public Service operations represent 20% of the activity occurring at night and have increased two percent (2%) when compared to the same period last year. Nighttime operations accounted for two percent (2%) of the overall operations for the Second Quarter of 2008.

Table II
Quarterly Air Traffic Nighttime Operations Summary – by Fiscal Year

Activity	2 nd 2007	3 rd 2007	4 th 2007	1 st 2008	2 nd 2008
Jets					
Air Ambulance	5	3	7	4	8
Air Carrier	10	7	24	0	0
GA	343	162	71	224	308
Subtotal Jets	358	172	102	228	316
Single & Multi-engine (includes air carrier & GA)	409	379	316	331	375
Public Service					
Mosquito Control Operations	2	50	82	17	8
Collier Sheriff's Office	136	161	137	116	127
EMS	33	21	21	41	39
Coast Guard	0	0	1	0	0
Subtotal Public Service	171	232	241	174	174
Total	938	783	659	733	865

Figure IC, below, illustrates the airport's total nighttime (10:00 PM – 7:00 AM) operational levels for fiscal years 2001 through 2007.

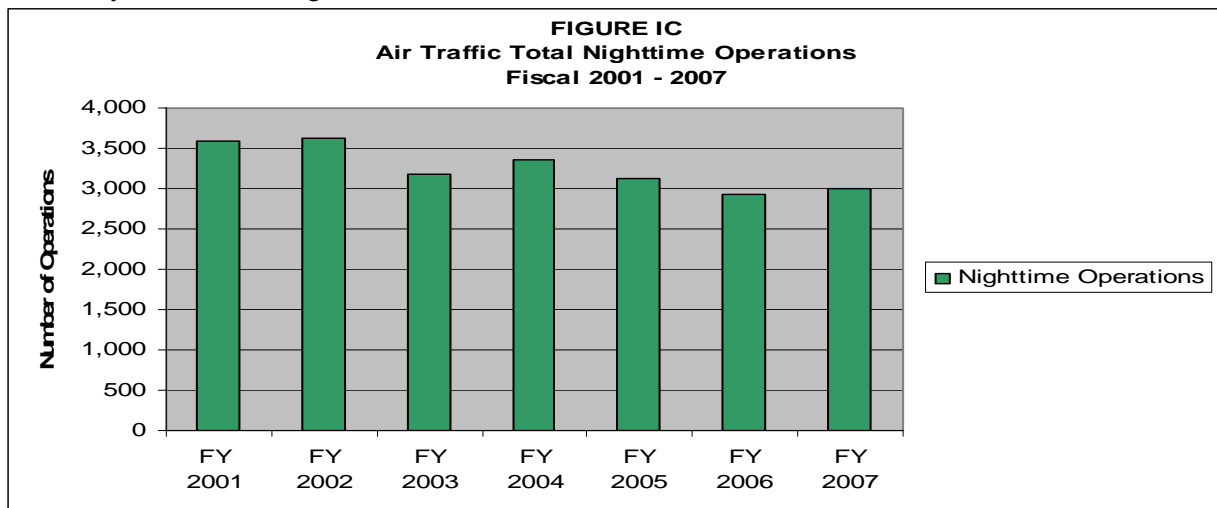


Table II A, depicts the percentage of nighttime operations as compared to total operations for the last six fiscal years. Night operations represent three percent (3%) for FY 02 – 03 and two percent (2%) of the total operations for FY 04, FY 05, FY 06 and FY 07. This is a one percent (1%) decrease when compared to FY 02 – 03.

Table II A
Fiscal Year Percentage of Nighttime Operations

Fiscal Year	Total Operations	Night Operations	% of Night Ops	% of Jet Night Ops
2002	138,790	3,626	3%	21%
2003	112,308	3,170	3%	23%
2004	136,128	3,361	2%	23%
2005	163,434	3,130	2%	34%*
2006	137,908	2,935	2%	38%*
2007	132,908	2,994	2%	29%*

* Delta began CRJ service in FY05. They had 328 nighttime operations in FY 05, 352 nighttime operations in FY 06 and 117 nighttime operations in FY 07. Without Delta's operations, the percentage of jet night operations in FY05 would have been twenty-four percent (24%) of the total nighttime operations and twenty-six percent (26%) of the total in FY 06 and twenty-five percent (25%) of the total in FY 07.

PART II

CITIZEN COMPLAINTS

Table III, on page 8, is a summary of citizen noise complaints separated according to four geographical areas (Quadrants). Below is a sample representation of the neighborhoods in each Quadrant. Every neighborhood in the area is not included in this list, although it is included in the Quadrant total.

Northeast Quadrant - Briarwood, Coconut River Estates, Golden Gate, Grey Oaks, Hawks Ridge, Wyndemere, and surrounding northeast areas.

Northwest Quadrant - Bears Paw, Coconut River Estates, Coquina Sands, Country Club of Naples, Lake Forest, Lake Park, Park Shore, Ridge Lakes, River Estates, River Reach, Sun Terrace, Moorings, Wilderness, and surrounding northwest areas.

Southwest Quadrant - Aqualane Shores, Old Naples, Port Royal, Royal Harbor, and surrounding southwest neighborhoods.

Southeast Quadrant - Brookside, Coconut Grove, Flamingo Estates, Foxfire, Kings Lake, Lakewood, Naples Gardens, Rock Creek Campground, The Glades, and surrounding neighborhoods.

The analysis will include the specific nature of the complaint, whether it was an arriving or departing aircraft or an overflight. Complaints relative to nighttime Mosquito Control operations, Air Ambulance Flights, Sheriff's Office and EMS helicopter operations are included in this report.

This Quarter Compared to Previous Quarter

This quarter's noise complaints, compared to the previous quarter, have increased from 72 to 123. Complaints received from neighborhoods to the northeast of the airport have increased by 6, from the northwest they have increased by 5, from the southeast they have increased by 4, from the southwest increased by 39 and unknown decreased by 3.

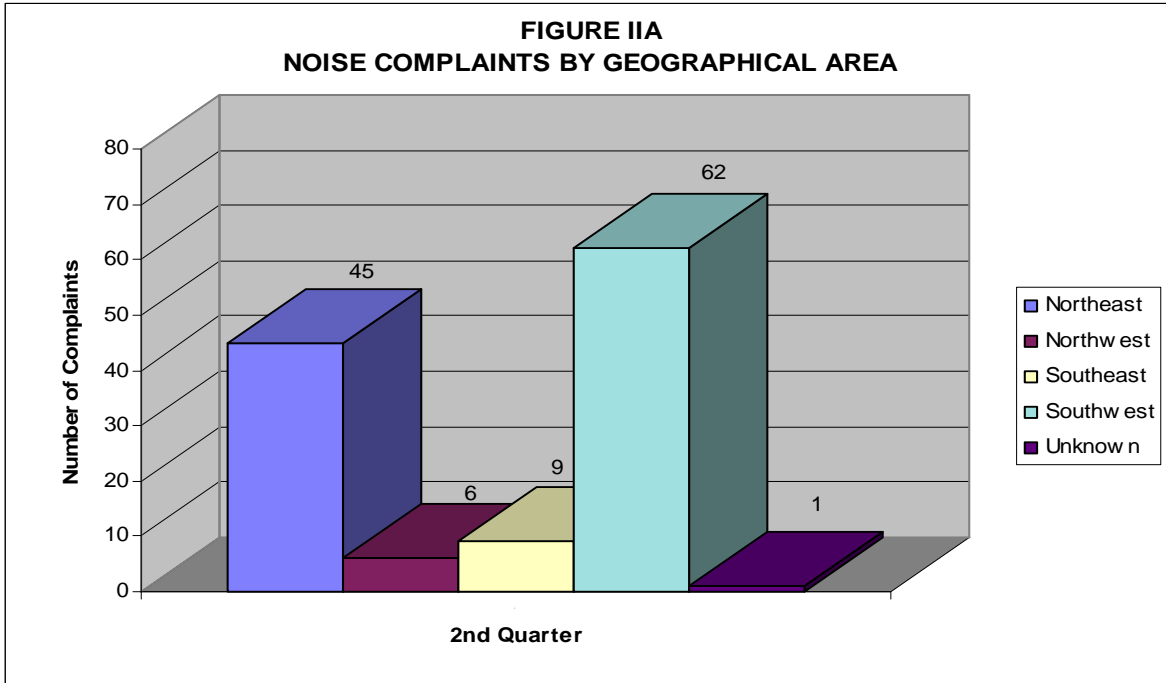
This Quarter Compared to the Same Period One Year Ago

Compared to the same period last year, the total number of complaints decreased by 432 calls. Complaints received from neighborhoods to the northeast of the airport have decreased by 421, from the northwest they have increased by 1, from the southeast increased by 3, from the southwest decreased by 10 and unknown decreased by 5. Total complaints received have decreased from 555 to 123.

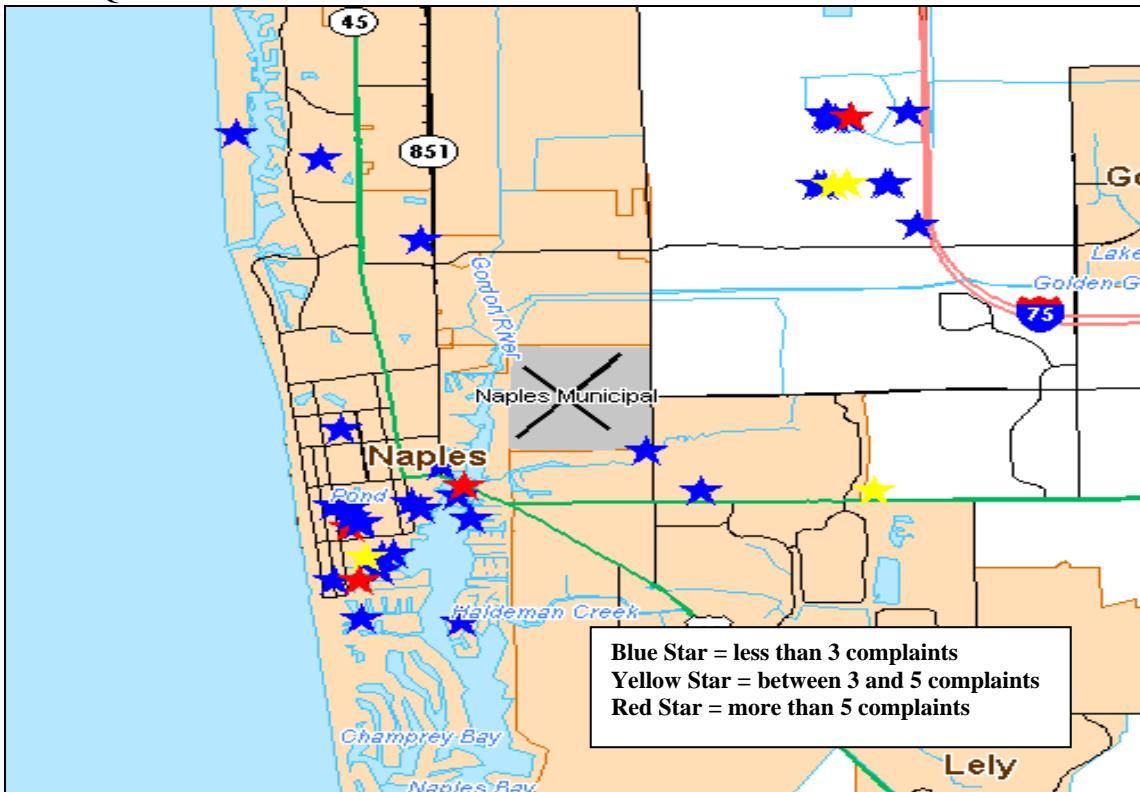
Table III
AIRPORT NOISE COMPLAINT SUMMARY
 Fiscal Years 2007-2008

YEAR	Northeast	Northwest	Southeast	Southwest	Unknown Location	Monthly Total
<i>2007</i>						
JANUARY	274	5	4	14	2	299
FEBRUARY	164	-	1	29	3	197
MARCH	28	-	1	29	1	59
TOTALS FOR 2nd QUARTER	466	5	6	72	6	555
APRIL	23	-	14	12	-	49
MAY	12	1	-	12	4	29
JUNE	6	-	1	3	-	10
TOTALS FOR 3rd QUARTER	41	1	15	27	4	88
JULY	6	-	-	5	-	11
AUGUST	-	2	-	3	1	6
SEPTEMBER	3	1	2	4	-	10
TOTALS FOR 4th QUARTER	9	3	2	12	1	27
TOTALS FOR FY07	721	11	35	148	15	930
<i>2008</i>						
OCTOBER	3	-	3	-	-	6
NOVEMBER	18	1	-	13	4	36
DECEMBER	18	-	2	10	-	30
TOTALS FOR 1st QUARTER	39	1	5	23	4	72
JANUARY	11	2	2	19	1	35
FEBRUARY	21	2	-	11	-	34
MARCH	13	2	7	32	-	54
TOTALS FOR 2nd QUARTER	45	6	9	62	1	123

Figure IIA, below, graphically compares the noise complaints received by geographical areas based on data collected during the Second Quarter of 2008. Total complaints for this quarter have decreased by seventy-eight percent (78%) when compared to the same period one year ago.



The map below shows the location of the complainants that provided an address, made during the Second Quarter of 2008.



PART III COMPLAINTS BY TIMEFRAME

Figure IIIA, below, depicts noise complaints for the Second Quarter according to the time of the single event. The highest number of complaints were received between the hours of 10:00 PM and 11:00 PM (20%) and at 4:00 PM (11%). Forty-two percent (42%) of the total complaints were received during the voluntary curfew hours.

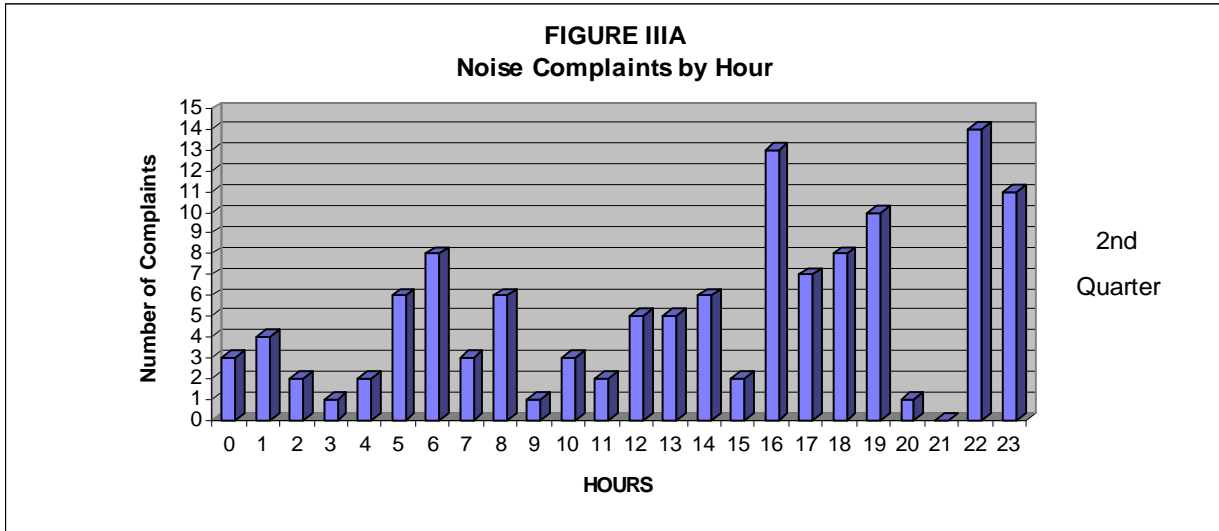
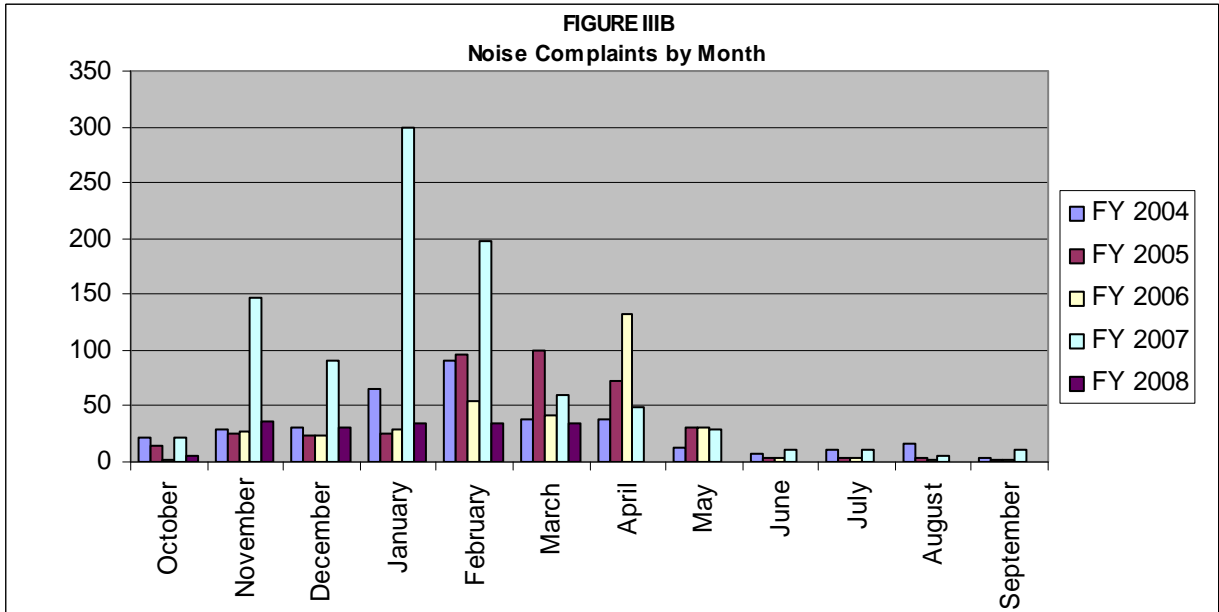


Figure IIIB below, illustrates the airport's complaint volume for fiscal years 2004, 2005, 2006, 2007 and 2008.



**PART IV
COMPLAINTS BY OPERATIONAL SOURCE**

Figure IVA below, indicates what types of aircraft the complainants were calling about. Seventy-six percent (76%) of the complaints were about Stage 3 jet aircraft operations which includes one complaint about a Stage 3 Air Ambulance operation.

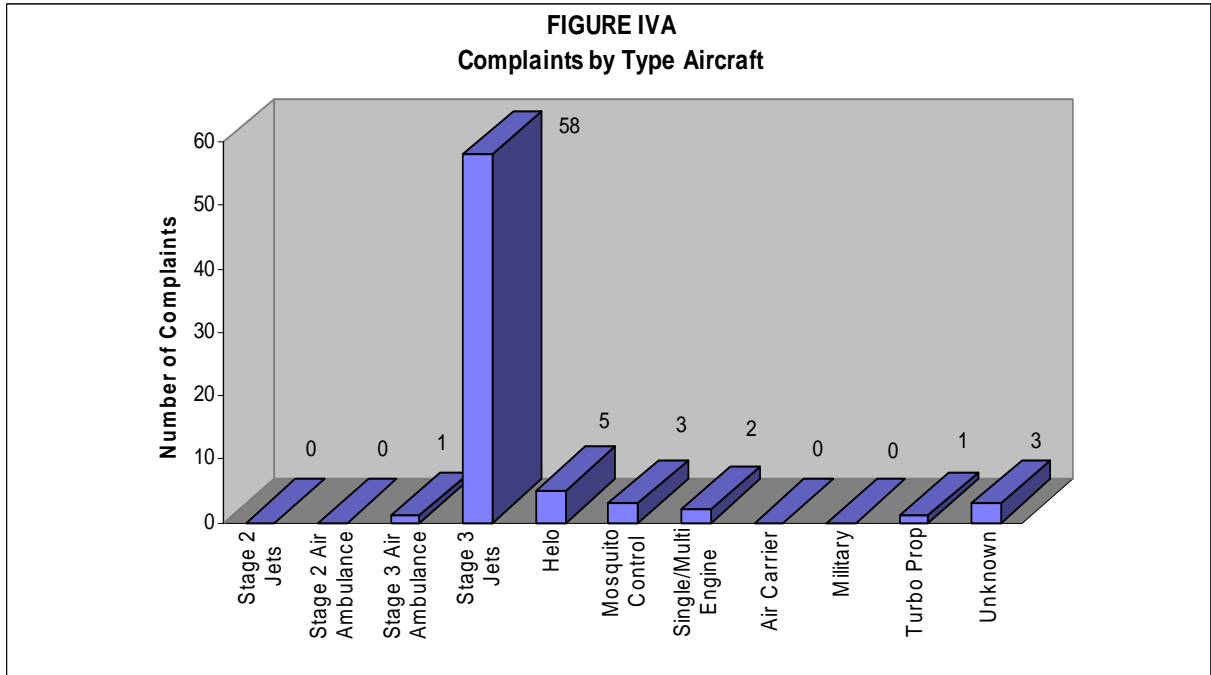
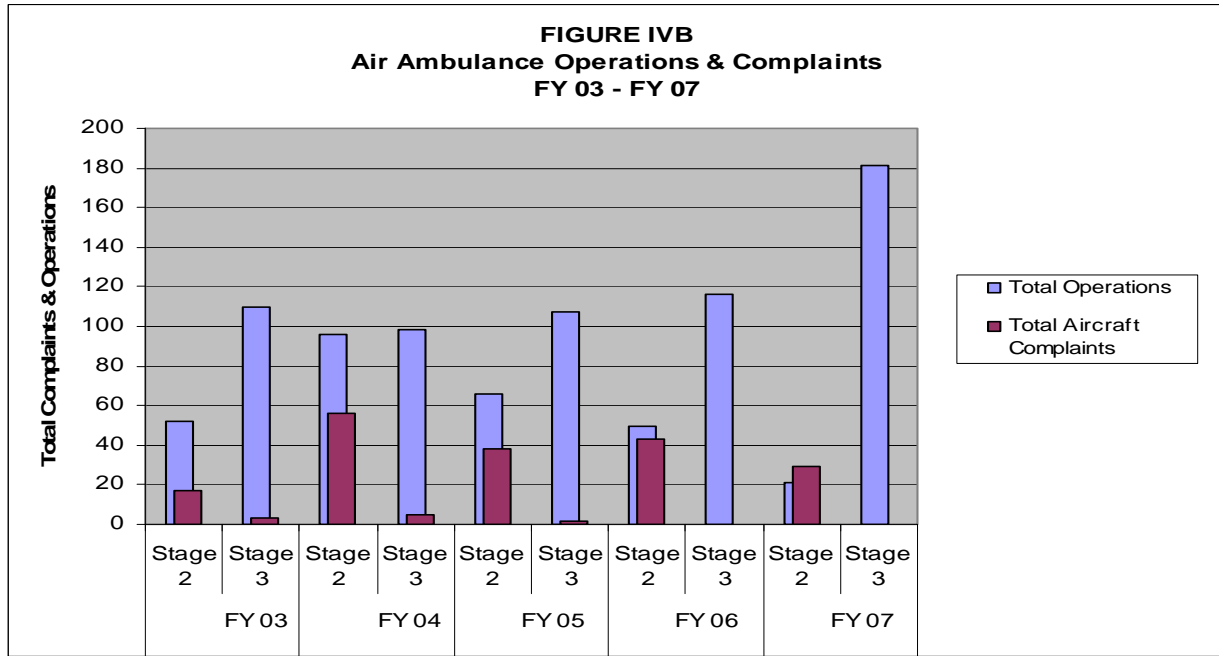


Figure IVB, below, depicts operations and noise complaints received from Stage 2 and Stage 3 Air Ambulances during FY 2003, 2004, 2005, 2006 and 2007.



PART V
COMPLAINTS BY OPERATION AND NATURE OF DISTURBANCE

Figure V below, shows the operational source of the noise complaints from the Second Quarter of 2008. The data indicates that arrivals account for fifty-five percent (55%) and departures account for thirty-six percent (36%) of the main operational source of complaints.

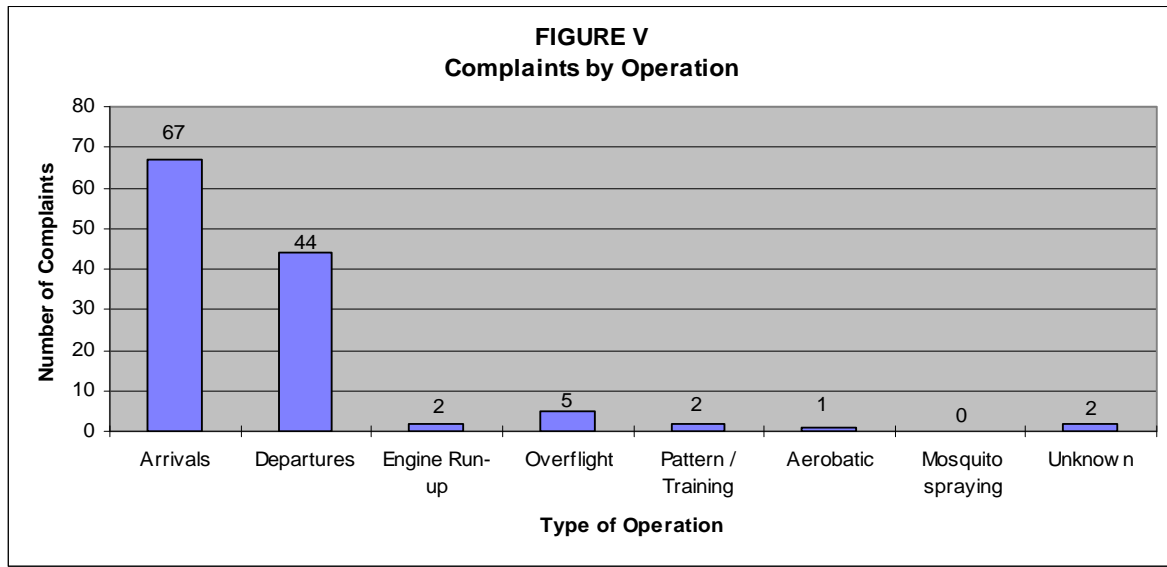
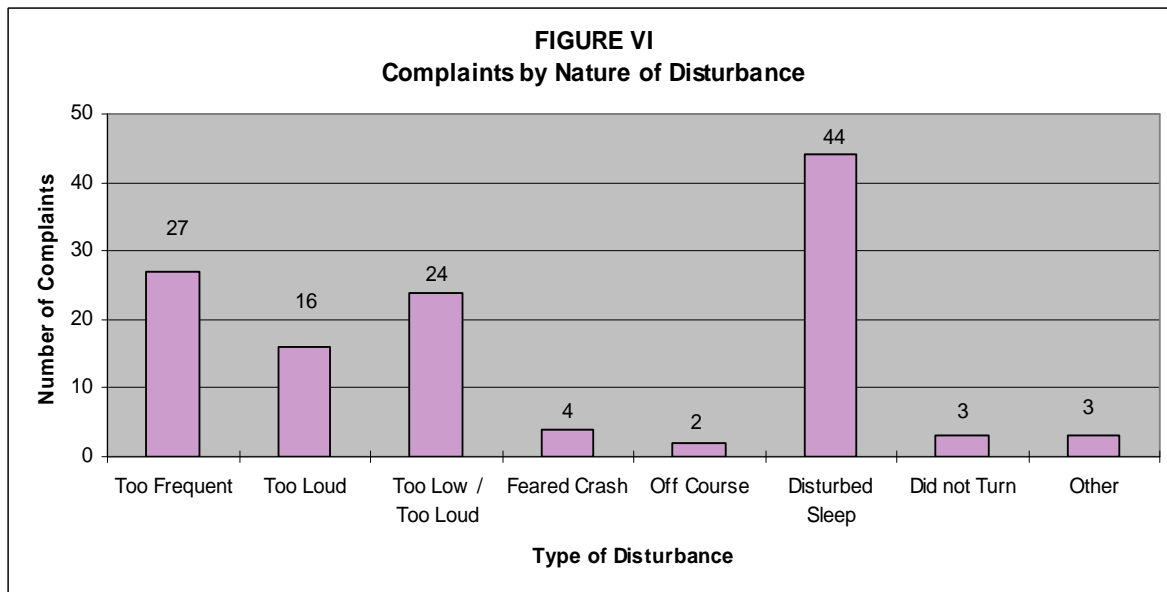


Figure VI below indicates the nature of the disturbances from complainants during this quarter. Most calls were in reference to “disturbed sleep” (36%) followed by “too frequent” (22%) and “too low / too loud” (20%). Thirteen percent (13%) of the callers reported that the aircraft were too loud.



SUMMARY

Air Traffic

Compared to the previous quarter, air carrier traffic has increased 62%, general aviation traffic has increased by 11%, and total air traffic has increased by 16%. Compared to the same period one year ago, air carrier traffic increased 16%, general aviation operations have decreased by 3%, and total traffic has decreased 1%.

Twenty percent (20%) of the total nighttime operations were attributed to Emergency Services helicopters and air ambulance jet aircraft. Jet aircraft operations at night have decreased by forty-two (42) operations when compared to same period last year. Single and multi-engine aircraft operations have decreased by thirty-four (34) operations and Mosquito Control operations have increased by six (6) operations. Total nighttime operations have decreased by seventy-three (73) operations, or eight percent (8%) when compared to last year.

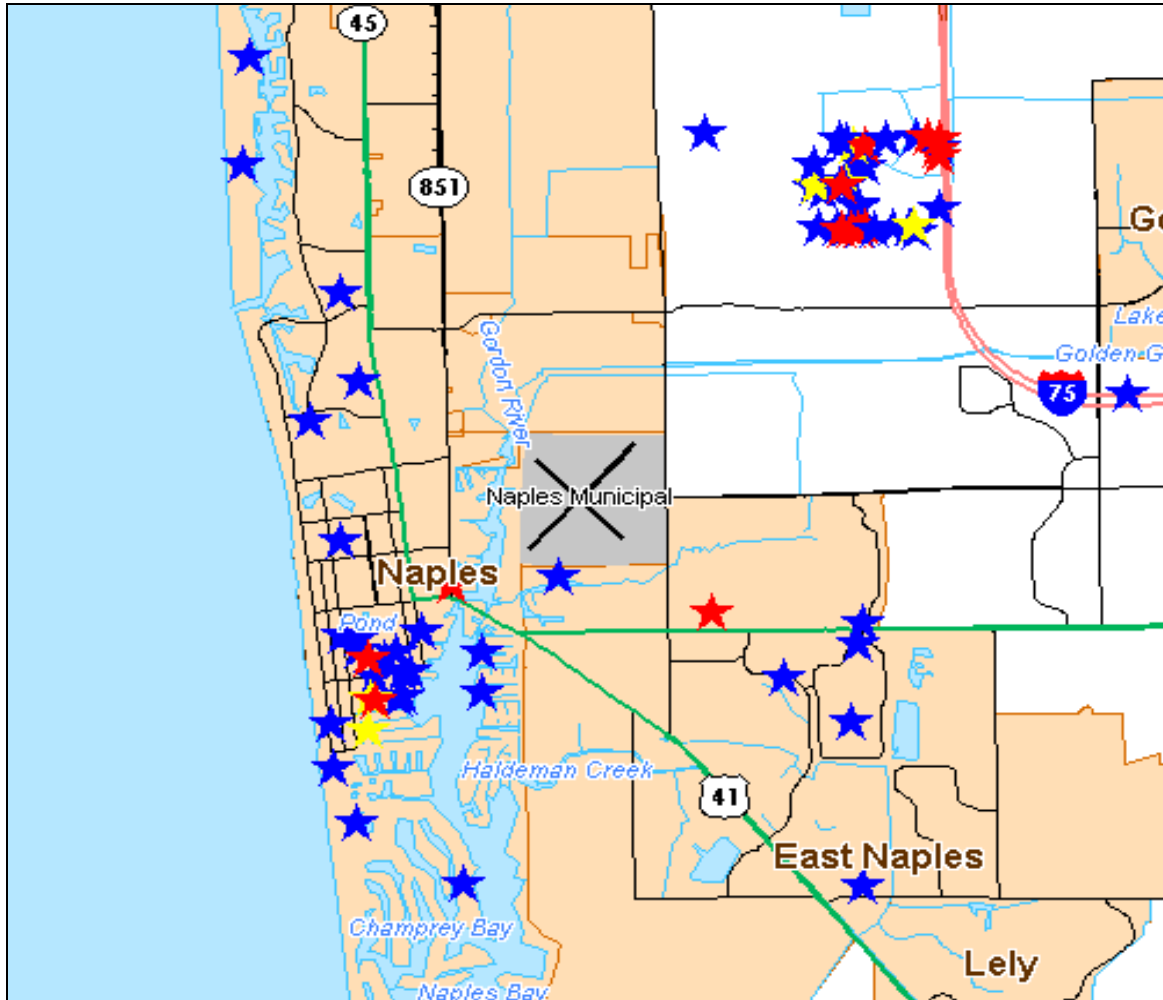
Noise Complaints

Compared to the previous quarter, noise complaints have increased from 72 to 123. Southwest Quadrant neighborhoods generated the most complaints during the Fiscal Second Quarter of 2008, with a total of 62 complaints. Other areas generated the following number of complaints: Northwest-6, Northeast-45, Southeast-9 and Unknown locations-1.

Noise Complaints by Family

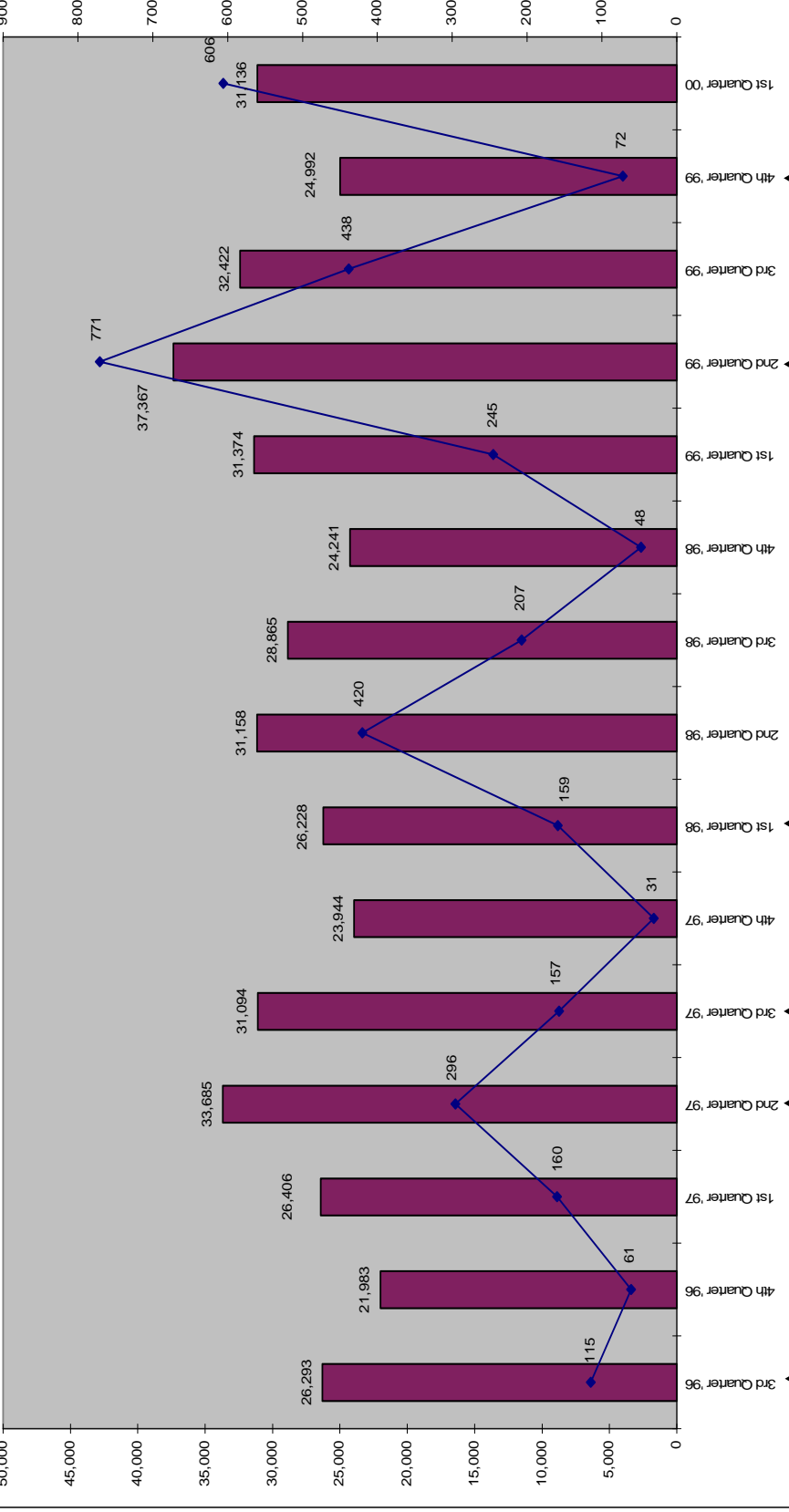
Fifty-one (51) different families made 123 complaints to the Noise Abatement Office during the Fiscal Second Quarter of 2008. Three families from the southwest made 35 calls and three families from the northeast made 16 calls or 42% of the total complaints for this quarter.

Below is a newly added map that depicts the location of complainants that provided an address, made during FY07.



Blue Star = less than 3 complaints
Yellow Star = between 3 and 5 complaints
Red Star = more than 5 complaints

Total Aircraft Operations and Complaints
Fiscal Year
3rd Quarter 1996 - 1st Quarter 2000



Long-Term Noise Monitoring Program Begins July 1999

24 hour Stage 1 Jet Aircraft Ban begins March 1999

Noise Compatibility Committee recommends total ban on Stage 1 Jet aircraft

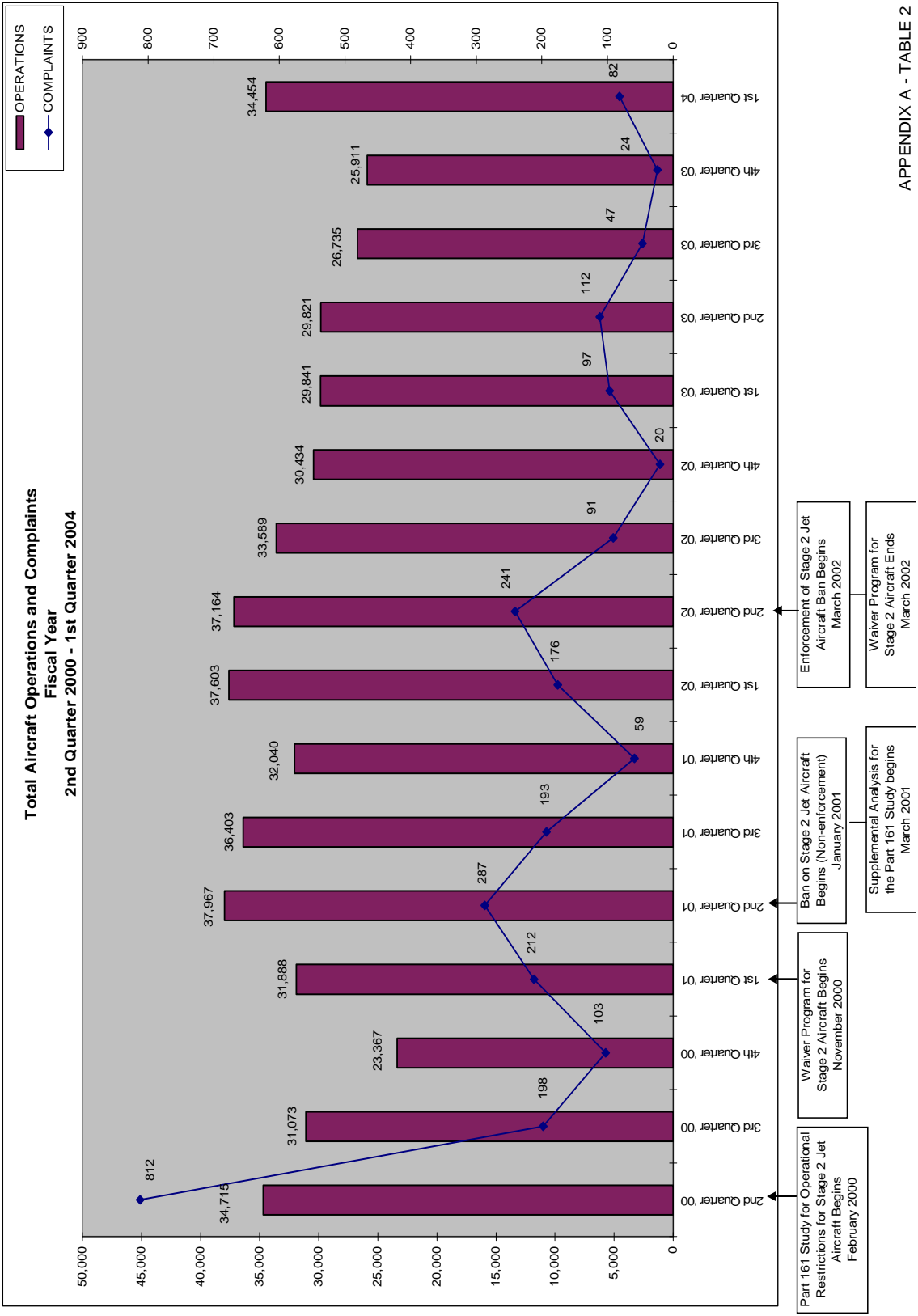
Jet Aircraft Noise Abatement Brochure Developed

Noise Compatibility Committee Formed January 1997

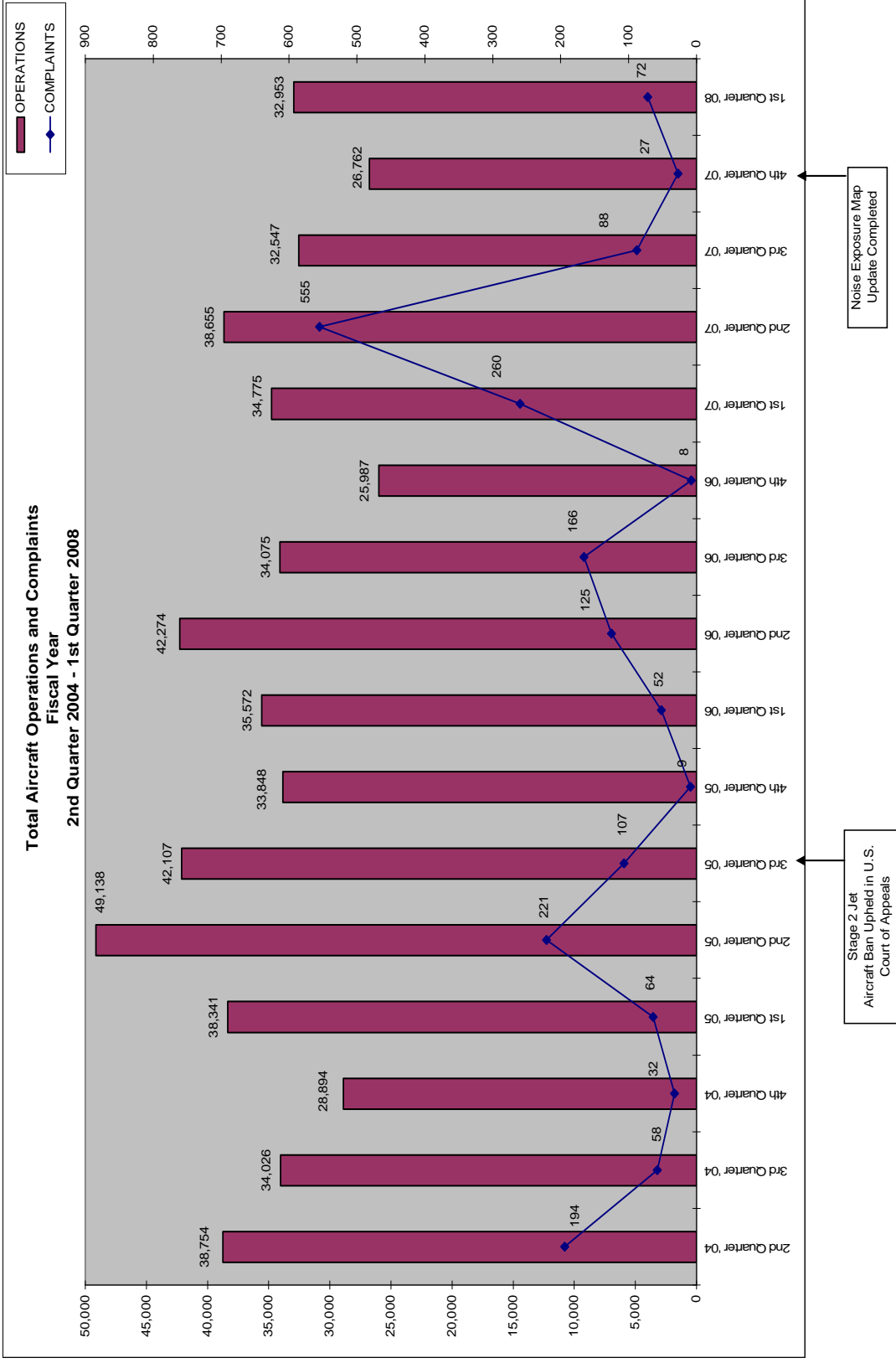
Nighttime Ban Stage 1 Jet Aircraft 10PM to 7AM begins May 1996

Part 150 Study Update Begins August 1999

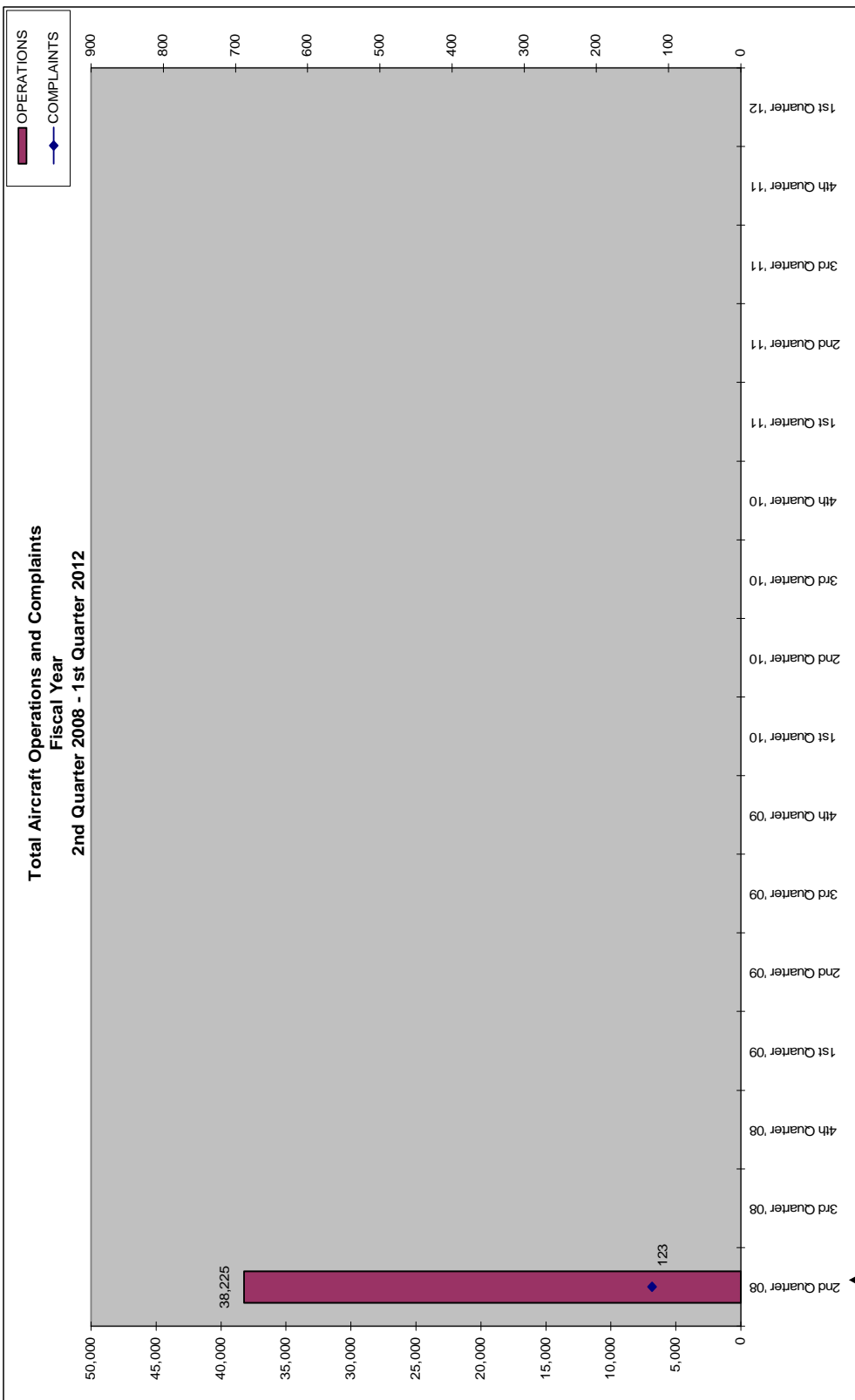
Voluntary Nighttime Curfew Stage 1 & 2 Jet Aircraft May 1996



APPENDIX A - TABLE 2

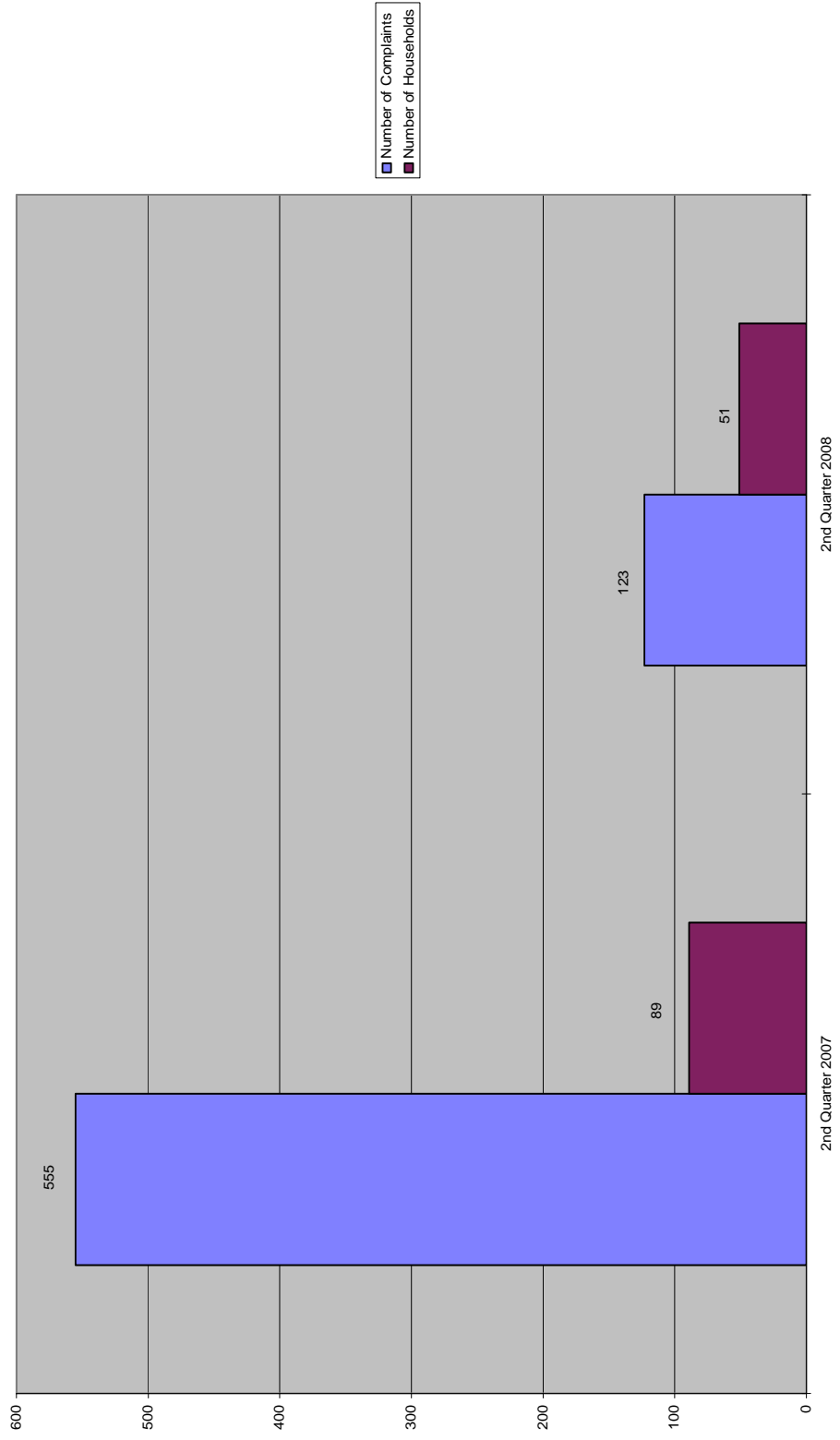


APPENDIX A - TABLE 3



Part 150 Study Update begins - February

Number of Complaints vs. Number of Households
2nd QUARTER



NOISE COMPLAINTS & OPERATIONS SUMMARY

APPENDIX C

MONTH: January 2008

DATE	7 AM - 10 PM								10 PM - 7 AM								TOTAL OPERATIONS		
	JET+HELO+PROP			JET OPS					JET+HELO+PROP			JET OPS							
	EVENTS	COMPLAINTS	OPERATIONS	TOTAL STAGE 1 OPERATIONS	TOTAL STAGE 2 OPERATIONS	AA STAGE 1 (EXEMPT)	AA STAGE 2 (EXEMPT)	AA STAGE 3 OPERATIONS	EVENTS	COMPLAINTS	OPERATIONS	TOTAL STAGE 1 OPERATIONS	TOTAL STAGE 2 OPERATIONS	AA STAGE 1 (EXEMPT)	AA STAGE 2 (EXEMPT)	AA STAGE 3 OPERATIONS		STAGE 3 GA OPERATIONS	STAGE 3 AT OPERATIONS
Tue-01	1	1	163								3						1		166
Wed-02			278								5						5		283
Thu-03			217								4						2		221
Fri-04			305								9						4		314
Sat-05	1	1	295								6						1		301
Sun-06			320								3								323
Mon-07	3	3	310								4								314
Tue-08	1	1	347								4						2		351
Wed-09	2	2	351								12						3		363
Thu-10			336								7						4		343
Fri-11			342								7						2		349
Sat-12			324							2	2	9					2		333
Sun-13	1	1	192							2	2	0							192
Mon-14			314								4						2		318
Tue-15			338								7						1		345
Wed-16			378								13						4		391
Thu-17	2	2	310								4						2		314
Fri-18	2	2	306							3	3	9					5		315
Sat-19			240								1								241
Sun-20			188							1	1	4					2		192
Mon-21			427							2	2	6					3		433
Tue-22			408								7						3		415
Wed-23			459							1	1	10					7		469
Thu-24			128								5						4		133
Fri-25			600							1	1	8					6		608
Sat-26	1	1	448							1	1	6					1		454
Sun-27			271								8						3		279
Mon-28			565								9						4		574
Tue-29	4	4	487								10						5		497
Wed-30	1	1	450							1	1	8				1	3		458
Thu-31			464							2	2	11					2		475
TOTALS	19	19	10,561	0	0	0	0	12	16	16	203	0	0	0	0	1	83	0	10,764

COMPLAINTS			
	DAY	NIGHT	TOTAL
Events	19	16	35
Complaints	19	16	35
Operations (Ops)	10,561	203	10,764
%Events/Ops	0.2%	7.9%	0.3%
Complaints & Events	1.0	1.0	1.0
% Complaints/ Ops	0.2%	7.9%	0.3%

NIGHT OPERATIONS	
Air Ambulance (AA)	J 1
EMS	H 8
Sheriff's Office	H 35
Mosquito Control	H 0
Mosquito Control	P 0
Public Service	J,H,P 44
Non-Jet Air Carrier & GA	H,P 76
Total GA Jet Ops	J 83
Total AT Jet Ops	J 0
Total Jet Operations	J 84
Night Ops - Total	J,H,P 203

RESTRICTIONS		Violations	Letters
Mandatory Restriction (MR)			
Runups: Maintenance		0	0
Jet Stage 1 day & night Ops		0	0
Jet Stage 2 day & night Ops		0	0
Voluntary Restriction (VR)			
Jet Stage 3 night Ops		7	7

NOISE COMPLAINTS & OPERATIONS SUMMARY

APPENDIX C

MONTH: February 2008

DATE	7 AM - 10 PM								10 PM - 7 AM								TOTAL OPERATIONS		
	JET+HELO+PROP			JET OPS					JET+HELO+PROP			JET OPS							
	EVENTS	COMPLAINTS	OPERATIONS	TOTAL STAGE 1 OPERATIONS	TOTAL STAGE 2 OPERATIONS	AA STAGE 1 (EXEMPT)	AA STAGE 2 (EXEMPT)	AA STAGE 3 OPERATIONS	EVENTS	COMPLAINTS	OPERATIONS	TOTAL STAGE 1 OPERATIONS	TOTAL STAGE 2 OPERATIONS	AA STAGE 1 (EXEMPT)	AA STAGE 2 (EXEMPT)	AA STAGE 3 OPERATIONS		STAGE 3 GA OPERATIONS	STAGE 3 AT OPERATIONS
Fri-01	1	1	452								11						4		463
Sat-02	2	2	402							7							2		409
Sun-03			402							10							1		412
Mon-04	1	1	411							11							2		422
Tues-05			562						1	1	9						4		571
Wed-06	2	2	421							12							4		433
Thur-07			458							12							5		470
Fri-08	3	3	563							9							3		572
Sat-09			293							9									302
Sun-10	2	2	382							11							4		393
Mon-11			491						1	1	15						6		506
Tues-12			347							11							2		358
Wed-13			349						1	1	8						5		357
Thur-14			502							19							9		521
Fri-15			566						1	1	11						6		577
Sat-16	1	1	435							13							3		448
Sun-17			374							9							3		383
Mon-18	1	1	427						2	2	13						7		440
Tues-19	1	1	489						3	3	8						6		497
Wed-20	1	1	575						1	1	18						5		593
Thurs-21	1	1	583							12							5		595
Fri-22			477							10							1		487
Sat-23			406							18							5		424
Sun-24	3	3	319							4									323
Mon-25			495							9							7		504
Tues-26			539							7						1	5		546
Wed-27			367						1	1	11						6		378
Thurs-28			614						2	2	10						2		624
Fri-29	2	2	575							13							4		588
																			0
																			0
TOTALS	21	21	13,276	0	0	0	2	17	13	13	320	0	0	0	0	1	116	0	13,596

COMPLAINTS			
	DAY	NIGHT	TOTAL
Events	21	13	34
Complaints	21	13	34
Operations (Ops)	13,276	320	13,596
%Events/Ops	0.2%	4.1%	0.3%
Complaints & Events	1.0	1.0	1.0
% Complaints/ Ops	0.2%	4.1%	0.3%

NIGHT OPERATIONS	
Air Ambulance (AA)	J 0
EMS	H 19
Sheriff's Office	H 44
Mosquito Control	H 2
Mosquito Control	P 4
Military	H 0
Public Service	J,H,P 69
Non-Jet Air Carrier & GA	H,P 134
Total GA Jet Ops	J 116
Total AT Jet Ops	J 0
Total Jet Operations	J 116
Night Ops - Total	J,H,P 319

RESTRICTIONS		Violations	Letters
Mandatory Restriction (MR)			
Runups: Maintenance		0	0
Jet Stage 1 day & night Ops		0	0
Jet Stage 2 day & night Ops		0	0
Voluntary Restriction (VR)			
Jet Stage 3 night Ops		12	9

NOISE COMPLAINTS & OPERATIONS SUMMARY

APPENDIX C

MONTH: March 2008

DATE	7 AM - 10 PM							10 PM - 7 AM							TOTAL OPERATIONS				
	JET+HELO+PROP			JET OPS				JET+HELO+PROP			JET OPS								
	EVENTS	COMPLAINTS	OPERATIONS	TOTAL STAGE 1 OPERATIONS	TOTAL STAGE 2 OPERATIONS	AA STAGE 1 (EXEMPT)	AA STAGE 2 (EXEMPT)	AA STAGE 3 OPERATIONS	EVENTS	COMPLAINTS	OPERATIONS	TOTAL STAGE 1 OPERATIONS	TOTAL STAGE 2 OPERATIONS	AA STAGE 1 (EXEMPT)		AA STAGE 2 (EXEMPT)	AA STAGE 3 OPERATIONS	STAGE 3 GA OPERATIONS	STAGE 3 AT OPERATIONS
Sat-01			449								11							3	460
Sun-02	2	2	462								11							2	473
Mon-03			476						1	1	4							3	480
Tue-04	1	1	410								13							4	423
Wed-05			500								11							5	511
Thu-06	3	3	593								12					2		5	605
Fri-07	3	3	380								10							6	390
Sat-08			148								5								153
Sun-09			494								12							3	506
Mon-10	2	2	484						2	2	19							6	503
Tue-11	2	3	476								11					1		2	487
Wed-12			365								14							1	379
Thu-13	1	1	517						1	1	19							2	536
Fri-14	1	2	433						1	1	16							11	449
Sat-15			389						2	2	8						1	2	397
Sun-16	2	2	272								12						1		284
Mon-17			514						1	1	11							6	525
Tue-18			338								9							1	347
Wed-19			393								4							2	397
Thu-20	4	5	514						5	6	19							13	533
Fri-21			455						1	1	11							1	466
Sat-22	1	1	350								7							2	357
Sun-23	2	2	223								9							4	232
Mon-24			440						3	3	13							6	453
Tue-25			483								9							1	492
Wed-26	3	3	581						2	3	6							4	587
Thu-27			553						1	1	10						2	3	563
Fri-28			532								14							3	546
Sat-29			474								8							2	482
Sun-30	2	2	427								11							3	438
Mon-31			398								13							2	411
TOTALS	29	32	13,523	0	0	0	2	31	20	22	342	0	0	0	0	7	108	0	13,865

COMPLAINTS			
	DAY	NIGHT	TOTAL
Events	29	20	49
Complaints	32	22	54
Operations (Ops)	13,523	342	13,865
%Events/Ops	0.2%	5.8%	0.4%
Complaints & Events	0.9	0.9	1.1
% Complaints/ Ops	0.2%	6.4%	0.4%

NIGHT OPERATIONS	
Air Ambulance (AA)	J 7
EMS	H 12
Sheriff's Office	H 48
Mosquito Control	H 2
Mosquito Control	P 0
Public Service	J,H,P 69
Non-Jet Air Carrier & GA	HP 165
Total GA Jet Ops	J 108
Total AT Jet Ops	J 0
Total Jet Operations	J 115
Night Ops - Total	J,H,P 342

RESTRICTIONS		Violations	Letters
Mandatory Restriction (MR)			
Runups: Maintenance		0	0
Jet Stage 1 day & night Ops		0	0
Jet Stage 2 day & night Ops		0	0
Voluntary Restriction (VR)			
Jet Stage 3 night Ops		19	17