



CITY OF NAPLES AIRPORT AUTHORITY

QUARTERLY NOISE REPORT

NUMBER 47

For the period

July 1, 2008 through September 30, 2008

Prepared by the
Noise Abatement Office

TABLE OF CONTENTS

	Page
INTRODUCTION	1
PART I AIRCRAFT OPERATIONS	1
Table I	Airport Traffic Summary 2
Figure IA	Total Monthly Operations 3
Figure IB	Total Night Operations by Month 4
Table II	Quarterly Air Traffic Nighttime Operations Summary 5
Figure IC	Fiscal year Air Traffic Nighttime Operations 5
Table IIA	Fiscal Year Percentage of Nighttime Operations 6
Table III	Nighttime Operations Percentage Breakdown 6
PART II CITIZEN COMPLAINTS	7
Table III	Airport Noise Complaint Summary 8
Figure IIA	Noise Complaints by Geographical Area 9
PART III COMPLAINTS BY TIMEFRAME	10
Figure IIIA	Noise Complaints by Hour 10
Figure IIIB	Noise Complaints by Month 10
PART IV COMPLAINTS BY OPERATIONAL SOURCE	11
Figure IVA	Complaints by Type Aircraft 11
Figure IVB	Air Ambulance Operations & Complaints 11
PART V COMPLAINTS BY OPERATION AND NATURE OF DISTURBANCE	12
Figure V	Complaints by Operations 12
Figure VI	Complaints by Nature of Disturbance 12
SUMMARY	13 & 14
Appendix A	Total Aircraft Operations and Complaints
Appendix B	Noise Complaints vs. Number of Households
Appendix C	Noise Complaint / Operations Summary (July/Aug./Sept.)

PART I AIRCRAFT OPERATIONS

INTRODUCTION

This is the forty-seventh Quarterly Noise Report prepared by the City of Naples Airport Authority - Noise Abatement Office. This report is informational in nature. The data included in this report tracks aircraft operations and noise complaints. The information contained in this report is fiscal year (Oct. – Sept.). All percentages are rounded to the nearest percent.

AIRCRAFT OPERATIONS

Table I, page 2, Airport Traffic Summary, contains aircraft movement data from FAA Form 7230-1 and after hour statistics recorded by the City of Naples Airport Authority Security Officers. Naples Air Traffic Control Tower is operational from 6:00 AM through 10:00 PM. A single movement represents either one arrival or one departure by the indicated aircraft category.

This Quarter Compared to Previous Quarter

Compared to the previous quarter, air carrier traffic has decreased by 65%; general aviation activity has decreased by 16% and total traffic decreased by 20%, from 32,589 operations to 25,964. The daily average for the Fourth Quarter was 282 operations.

This Quarter Compared to the Same Period One Year Ago

Compared to the same period last year, air carrier traffic has decreased by 22% and general aviation air traffic has decreased by 2%. Total air traffic operations decreased by 3% from 26,762 operations to 25,964.

Fiscal Year 2007 Compared to Fiscal Year 2008

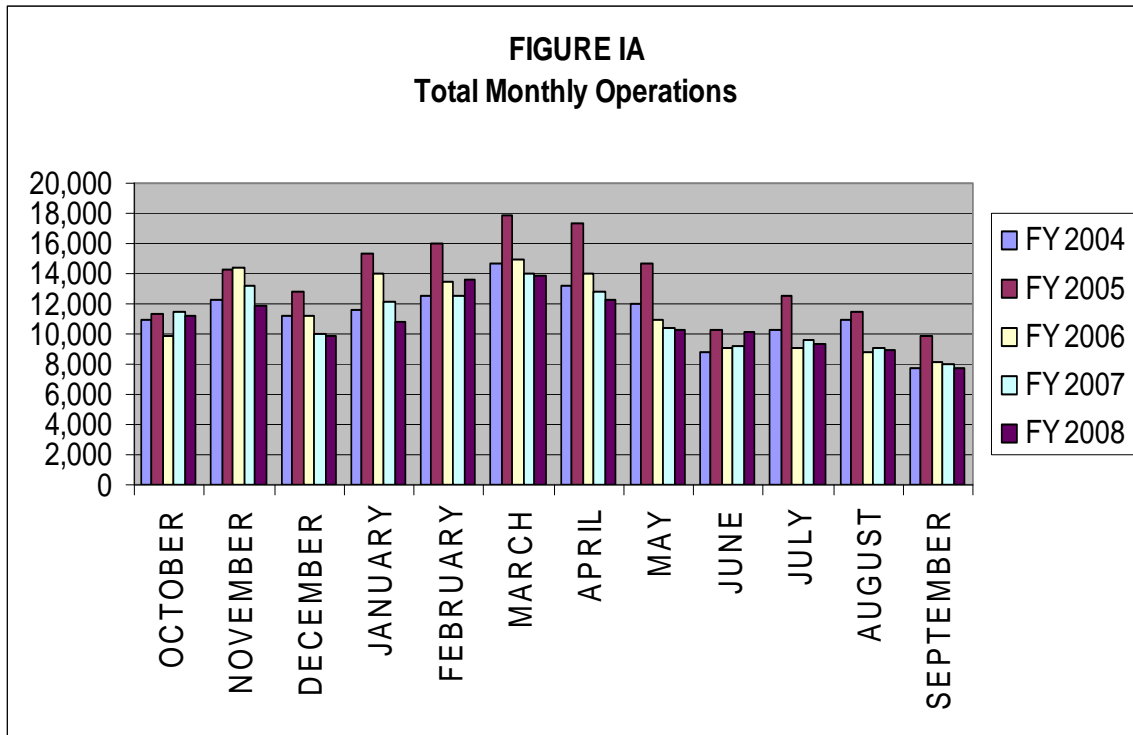
FY08 operations have decreased by 3,008 operations (2%), from 132,739 to 129,731 operations when compared to FY07. Itinerant operations decreased by seven percent (7%) from 101,476 to 94,765 operations, and local operations have increased 12%, from 31,263 to 34,966 operations. Itinerant operations accounted for 73% of the total airport operations in FY08. IFR operations decreased by 5%, from 43,333 to 40,990.

Table I

AIRPORT TRAFFIC SUMMARY
Landings and Takeoffs
Fiscal Years 2007-2008

YEAR	AIR CARRIER	GENERAL AVIATION	MILITARY	TOTAL TRAFFIC	DAILY AVERAGE
2007					
JULY	520	9,108	1	9,629	311
AUGUST	457	8,637	2	9,096	293
SEPTEMBER	399	7,634	4	8,037	268
TOTALS FOR 4th QUARTER	1,376	25,379	7	26,762	291
TOTALS FOR FY07	11,544	121,138	57	132,739	365
2008					
OCTOBER	718	10,420	7	11,145	360
NOVEMBER	1,234	10,664	7	11,905	397
DECEMBER	1,119	8,777	7	9,903	320
TOTALS FOR 1st QUARTER	3,071	29,861	21	32,953	359
JANUARY	1,331	9,425	8	10,764	347
FEBRUARY	1,679	11,913	4	13,596	469
MARCH	1,954	11,899	12	13,865	447
TOTALS FOR 2nd QUARTER	4,964	33,237	24	38,225	421
APRIL	1,330	10,885	8	12,223	407
MAY	1,098	9,195	-	10,293	332
JUNE	622	9,441	10	10,073	336
TOTALS FOR 3rd QUARTER	3,050	29,521	18	32,589	358
JULY	383	8,917	-	9,300	300
AUGUST	368	8,581	10	8,959	289
SEPTEMBER	326	7,373	6	7,705	257
TOTALS FOR 4th QUARTER	1,077	24,871	16	25,964	282
TOTALS FOR FY08	12,162	117,490	79	129,731	355

Figure IA below illustrates the airport's month-by-month total operational levels for fiscal years 2004, 2005, 2006, 2007 and 2008.



Overall airport operations during the Fourth Quarter of 2008 decreased by 3% when compared to the same period in 2007.

Night Time Operations

Figure IB, below, illustrates the airport's total nighttime (10:00 PM – 7:00 AM) operational levels for fiscal year 2004, 2005, 2006, 2007 and 2008.

Total nighttime operations have increased by thirty percent (30%) in the Fourth Quarter of 2008 when compared to the Fourth Quarter 2007 statistics. Jet operations occurring at night decreased by 11 operations and single and multi-engine aircraft operations increased by 108.

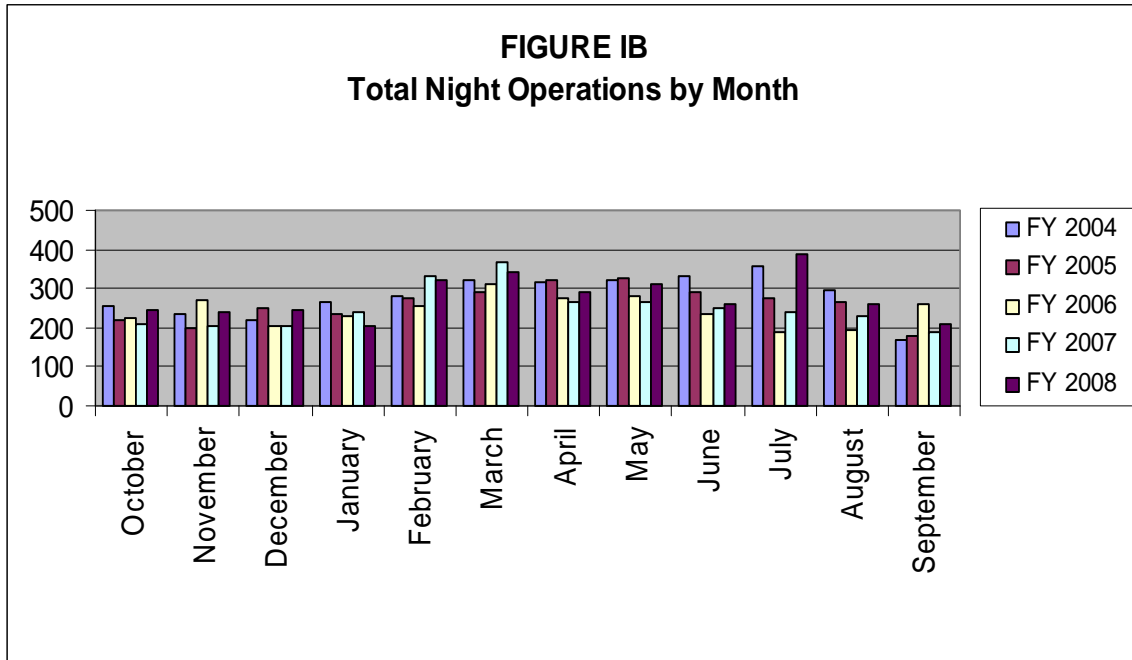


Table II, below, summarizes the types of nighttime operations occurring at the airport during the previous five quarters. Nighttime operations include voluntary curfew hours (10:00 PM through 7:00 AM). Reported nighttime operations have increased by 30% when compared to the same time last year. Jet air carrier operations have had a reduction of twenty-four operations due to Delta no longer operating at the airport. General aviation jet traffic has increased by twenty-six percent (26%) and single and multi-engine aircraft operations have increased by thirty-four percent (34%).

Public Service operations represent 40% of the activity occurring at night and have increased forty-one percent (41%) when compared to the same period last year. Nighttime operations accounted for two percent (2%) of the overall operations for the Fourth Quarter of 2008.

Table II
Quarterly Air Traffic Nighttime Operations Summary – by Fiscal Year

Activity	4 th 2007	1 st 2008	2 nd 2008	3 rd 2008	4 th 2008
Jets					
Air Ambulance	7	4	8	4	1
Air Carrier	24	0	0	0	0
GA	71	224	308	158	90
Subtotal Jets	102	228	316	162	91
Single & Multi-engine (includes air carrier & GA)	316	331	375	477	424
Public Service					
Mosquito Control Operations	82	17	8	75	168
Collier Sheriff's Office	137	116	127	127	137
EMS	21	41	39	21	34
Coast Guard	1	0	0	0	0
Subtotal Public Service	241	174	174	223	339
Total	659	733	865	862	854

Figure IC, below, illustrates the airport's total nighttime (10:00 PM – 7:00 AM) operational levels for fiscal years 2002 through 2008.

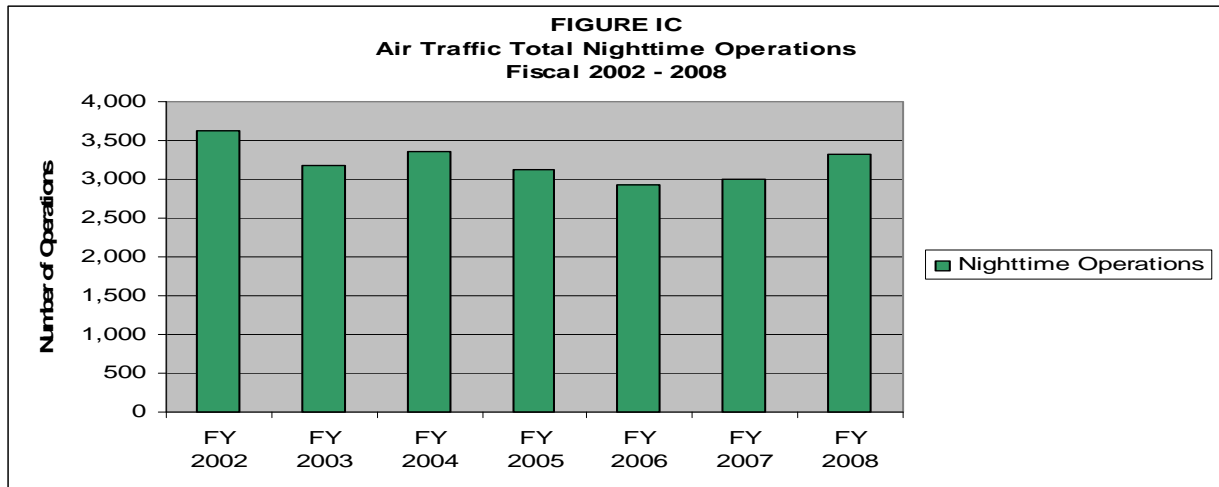


Table II A, depicts the percentage of nighttime operations as compared to total operations for the last seven fiscal years. Night operations represent three percent (3%) for FY 02 – 03 and two percent (2%) of the total operations for FY 04, FY 05, FY 06, FY 07 and FY 08. This is a one percent (1%) decrease when compared to FY 02 – 03.

**Table II A
Fiscal Year Percentage of Nighttime Operations**

Fiscal Year	Total Operations	Night Operations	% of Night Ops	% of Jet Night Ops
2002	138,790	3,626	3%	21%
2003	112,308	3,170	3%	23%
2004	136,128	3,361	2%	23%
2005	163,434	3,130	2%	34%*
2006	137,908	2,935	2%	38%*
2007	132,908	2,994	2%	29%*
2008	129,731	3,314	2%	24%

* Delta began CRJ service in FY05. They had 328 nighttime operations in FY 05, 352 nighttime operations in FY 06 and 117 nighttime operations in FY 07. Without Delta's operations, the percentage of jet night operations in FY05 would have been twenty-four percent (24%) of the total nighttime operations and twenty-six percent (26%) of the total in FY 06 and twenty-five percent (25%) of the total in FY 07.

**Table III
Nighttime Operations Percentage Breakdown – 4th Quarter 2008
10 p.m. – 7 a.m.**

Total Nighttime Operations	Jul-08	Aug-08	Sep-08	Total	
Airline					
Jet	0	0	0	0	0.0%
Prop	0	0	0	0	0.0%
Government	140	98	66	304	35.6%
Medical	26	0	8	34	4.0%
General Aviation					
Fractional	6	10	9	25	2.9%
Transient - Jet	17	12	11	40	4.7%
Transient - Prop	72	52	36	160	18.7%
Based - Jet	9	8	11	28	3.3%
Based - Prop	116	78	69	263	30.8%
Total	386	258	210	854	
General Aviation Jet vs. Prop					
Total Jet	32	30	31	93	18.0%
Total Prop	188	130	105	423	82.0%
	220	160	136	516	

Nighttime General Aviation Jet vs. Prop Percentage Breakdown – Fiscal 08

Total Jet	34.2%
Total Prop	65.8%

PART II CITIZEN COMPLAINTS

Table III, on page 8, is a summary of citizen noise complaints separated according to four geographical areas (Quadrants). Below is a sample representation of the neighborhoods in each Quadrant. Every neighborhood in the area is not included in this list, although it is included in the Quadrant total.

Northeast Quadrant - Briarwood, Coconut River Estates, Golden Gate, Grey Oaks, Hawks Ridge, Wyndemere, and surrounding northeast areas.

Northwest Quadrant - Bears Paw, Coconut River Estates, Coquina Sands, Country Club of Naples, Lake Forest, Lake Park, Park Shore, Ridge Lakes, River Estates, River Reach, Sun Terrace, Moorings, Wilderness, and surrounding northwest areas.

Southwest Quadrant - Aqualane Shores, Old Naples, Port Royal, Royal Harbor, and surrounding southwest neighborhoods.

Southeast Quadrant - Brookside, Coconut Grove, Flamingo Estates, Foxfire, Kings Lake, Lakewood, Naples Gardens, Rock Creek Campground, The Glades, and surrounding neighborhoods.

The analysis will include the specific nature of the complaint, whether it was an arriving or departing aircraft or an overflight. Complaints relative to nighttime Mosquito Control operations, Air Ambulance Flights, Sheriff's Office and EMS helicopter operations are included in this report.

This Quarter Compared to Previous Quarter

This quarter's noise complaints, compared to the previous quarter, have decreased from 54 to 16. Complaints received from neighborhoods to the northeast of the airport have decreased by 4, from the northwest they have increased by 3, from the southeast they have remained the same at 4, from the southwest decreased by 40 and unknown increased by 3.

This Quarter Compared to the Same Period One Year Ago

Compared to the same period last year, the total number of complaints decreased by 11 calls. Complaints received from neighborhoods to the northeast of the airport have decreased by 3, from the northwest they have remained the same at 3, from the southeast increased by 2, from the southwest decreased by 12 and unknown increased by 2. Total complaints received have decreased from 27 to 16.

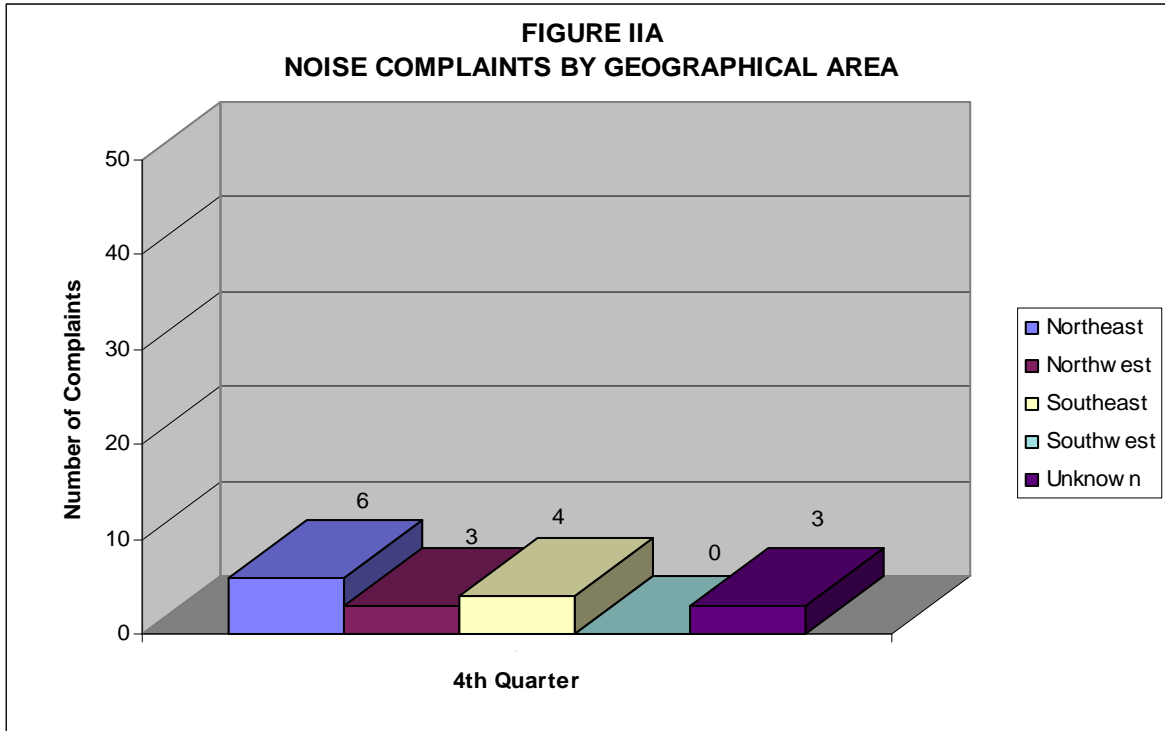
Fiscal Year 2007 Compared to Fiscal Year 2008

Complaints have decreased 72% in Fiscal Year 2008, from 930 in FY07 to 265 in FY08.

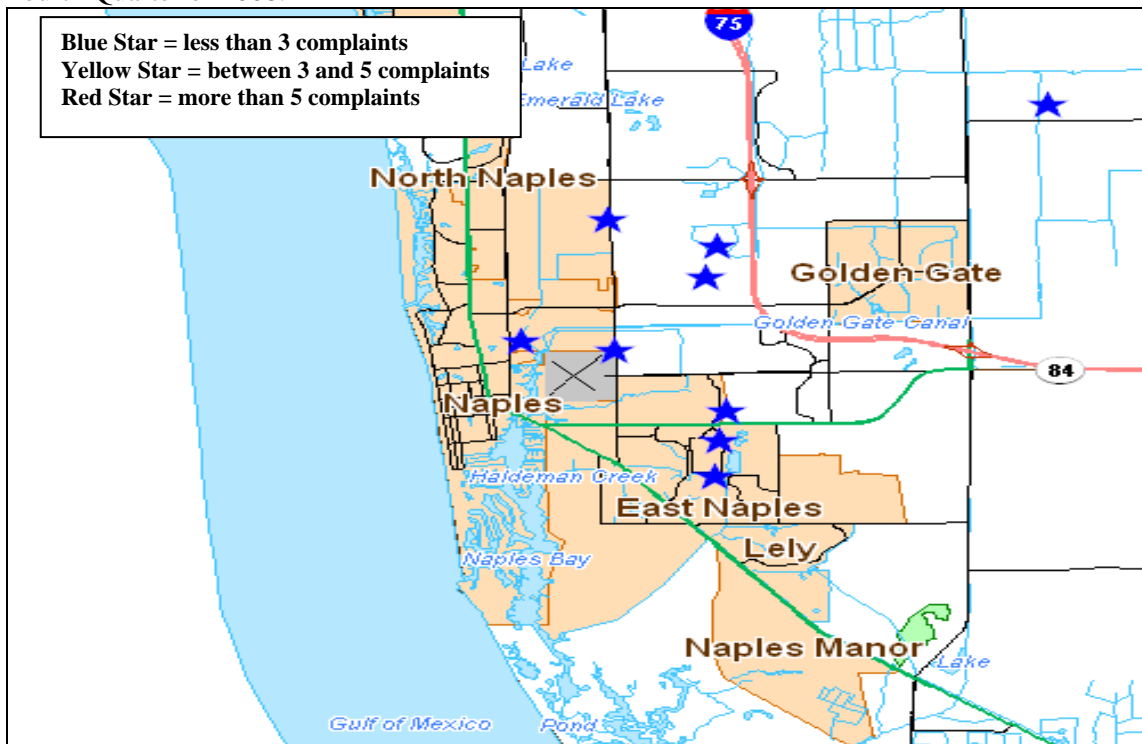
Table III
AIRPORT NOISE COMPLAINT SUMMARY
 Fiscal Years 2007-2008

YEAR	Northeast	Northwest	Southeast	Southwest	Unknown Location	Monthly Total
2007						
JULY	6	-	-	5	-	11
AUGUST	-	2	-	3	1	6
SEPTEMBER	3	1	2	4	-	10
TOTALS FOR 4th QUARTER	9	3	2	12	1	27
TOTALS FOR FY07	721	11	35	148	15	930
2008						
OCTOBER	3	-	3	-	-	6
NOVEMBER	18	1	-	13	4	36
DECEMBER	18	-	2	10	-	30
TOTALS FOR 1st QUARTER	39	1	5	23	4	72
JANUARY	11	2	2	19	1	35
FEBRUARY	21	2	-	11	-	34
MARCH	13	2	7	32	-	54
TOTALS FOR 2nd QUARTER	45	6	9	62	1	123
APRIL	5	-	2	22	-	29
MAY	4	-	-	10	-	14
JUNE	1	-	2	8	-	11
TOTALS FOR 3rd QUARTER	10	-	4	40	-	54
JULY	-	1	4	-	2	7
AUGUST	2	-	-	-	-	2
SEPTEMBER	4	2	-	-	1	7
TOTALS FOR 4th QUARTER	6	3	4	-	3	16
TOTALS FOR FY08	100	10	22	125	8	265

Figure IIA, below, graphically compares the noise complaints received by geographical areas based on data collected during the Fourth Quarter of 2008. Total complaints for this quarter have decreased by forty-one percent (41%) when compared to the same period one year ago.



The map below shows the location of the complainants that provided an address, made during the Fourth Quarter of 2008.



PART III COMPLAINTS BY TIMEFRAME

Figure IIIA, below, depicts noise complaints for the Fourth Quarter according to the time of the single event. The highest number of complaints were received during the 4:00 AM hour. This is due to the increased operations of Mosquito Control during this time of year. Sixty-three percent (63%) of the total complaints were received during the voluntary curfew hours.

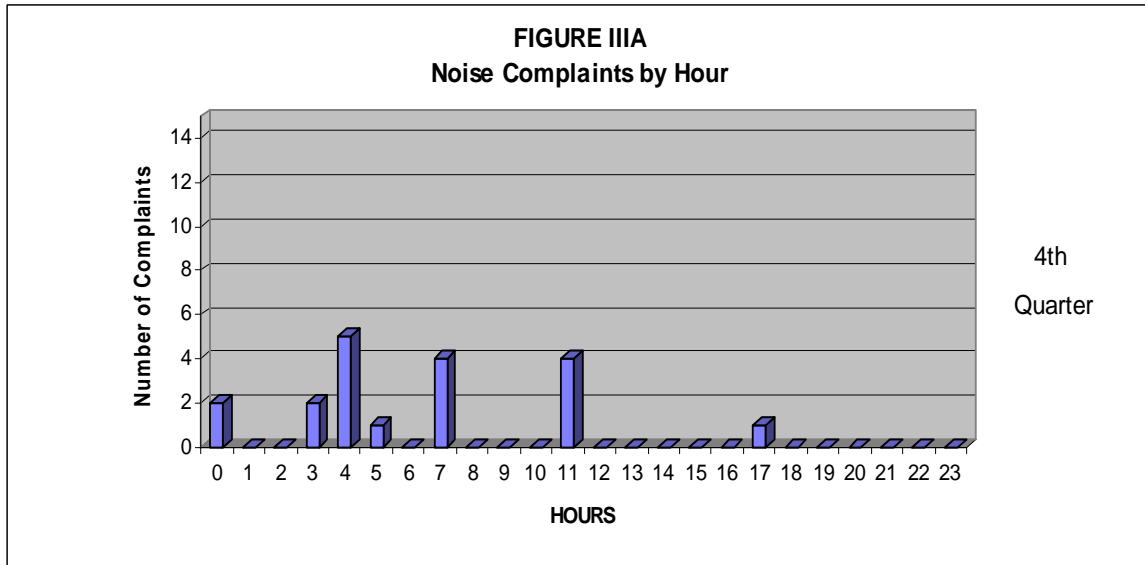
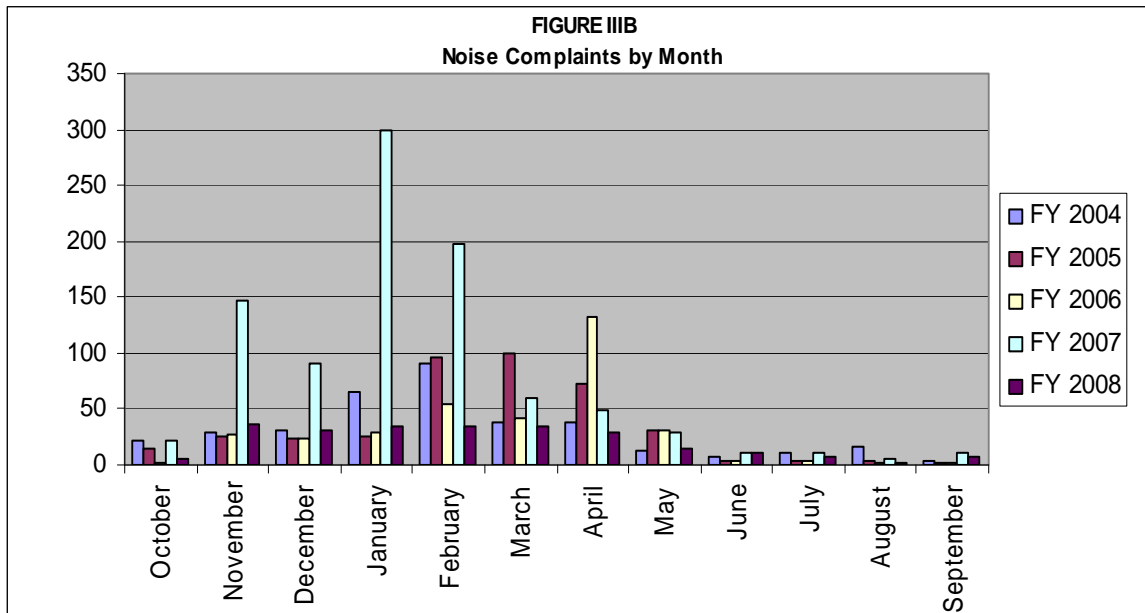


Figure IIIB below, illustrates the airport’s complaint volume for fiscal years 2004, 2005, 2006, 2007 and 2008.



PART IV COMPLAINTS BY OPERATIONAL SOURCE

Figure IVA below, indicates what types of aircraft the complainants were calling about. Fifty-six percent (56%) of the complaints were about Mosquito Control operations.

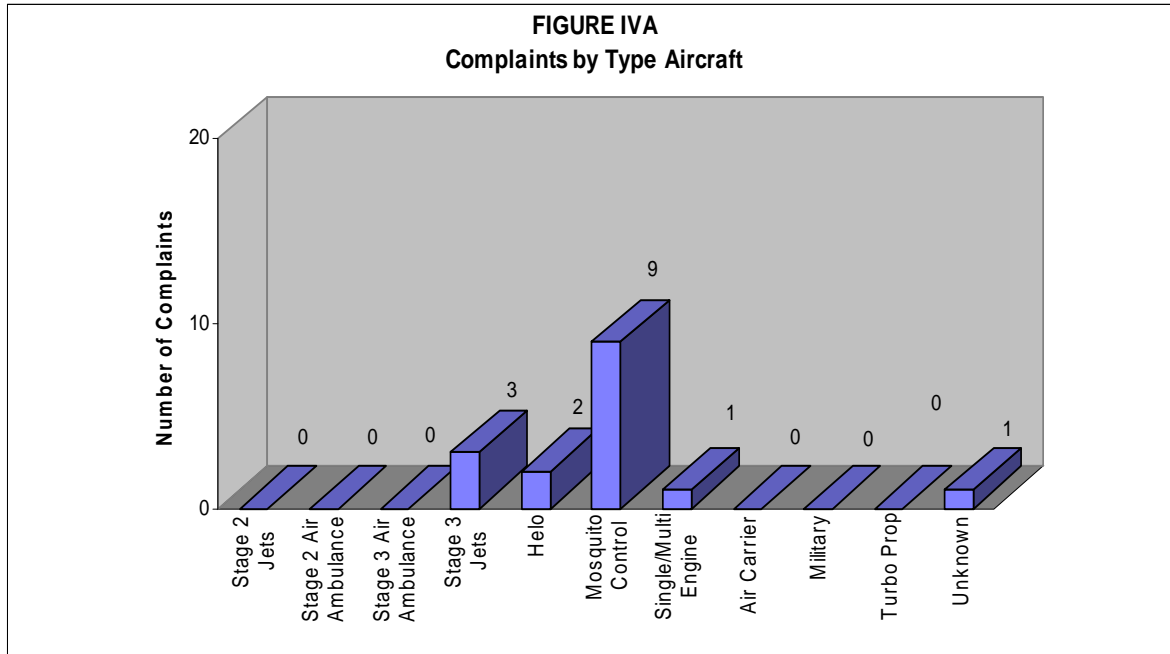
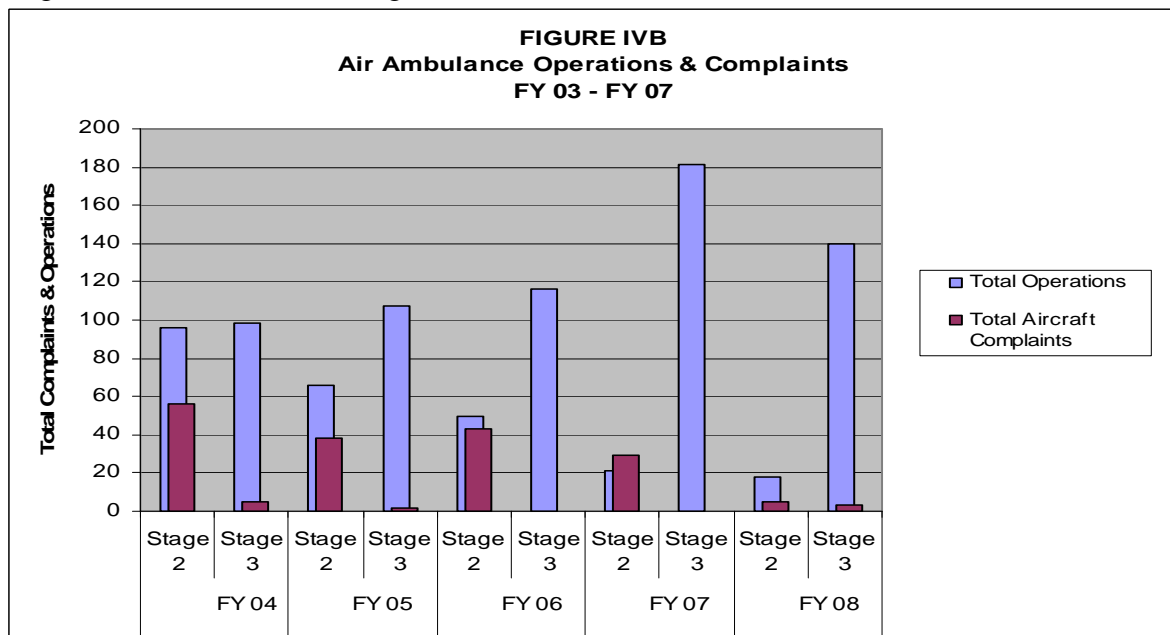


Figure IVB, below, depicts operations and noise complaints received from Stage 2 and Stage 3 Air Ambulances during FY 2003, 2004, 2005, 2006, 2007 and 2008.



PART V
COMPLAINTS BY OPERATION AND NATURE OF DISTURBANCE

Figure V below, shows the operational source of the noise complaints from the Fourth Quarter of 2008. The data indicates that arrivals and departures account evenly the main operational source of complaints.

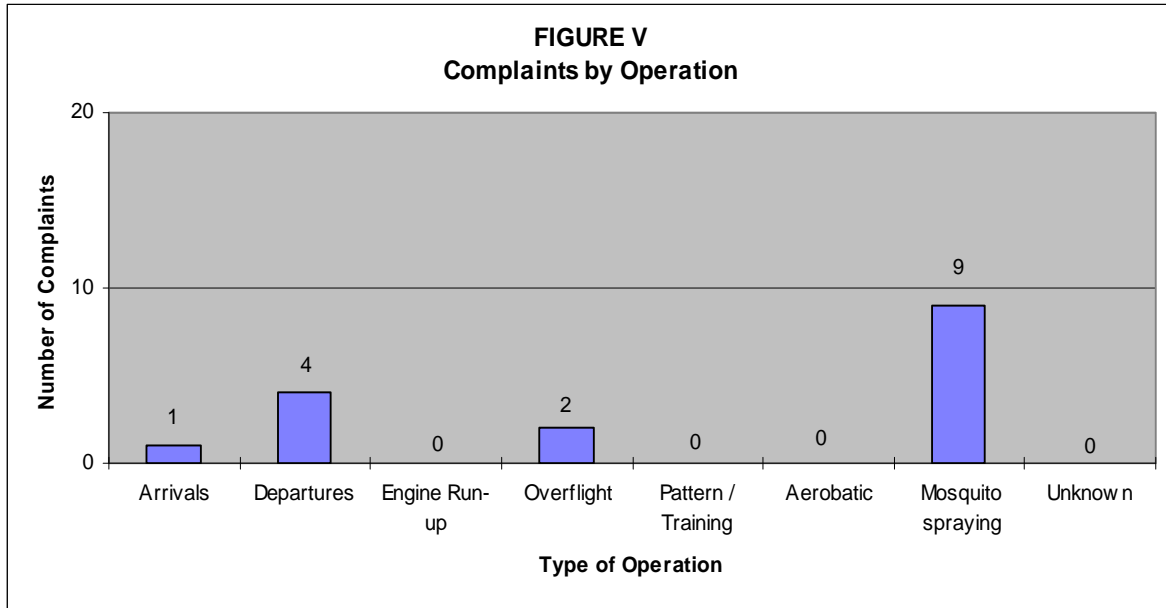
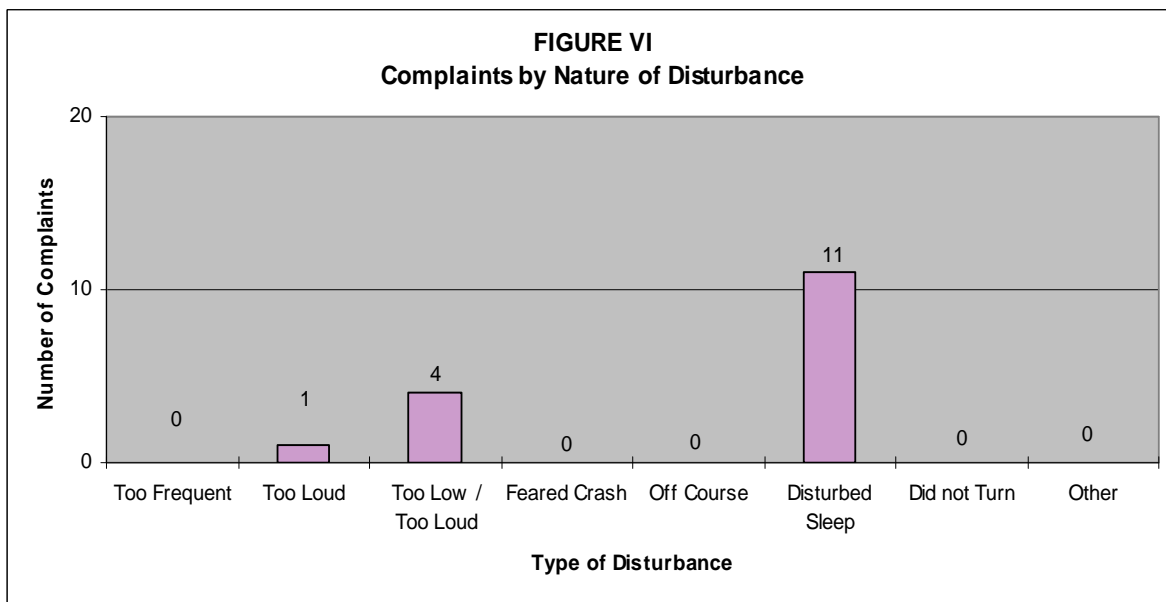


Figure VI below indicates the nature of the disturbances from complainants during this quarter. Most calls were in reference to “disturbed sleep” (69%) followed by “too low / too loud” (25%) and “too loud” (6%).



SUMMARY

Air Traffic

Compared to the previous quarter, air carrier traffic has decreased 65%, general aviation traffic has decreased by 16%, and total air traffic has decreased by 20%. Compared to the same period one year ago, air carrier traffic decreased 22%, general aviation operations decreased by 2% and total Traffic has decreased by 3%.

Twenty percent (20%) of the total nighttime operations were attributed to Emergency Services helicopters and air ambulance jet aircraft. Jet aircraft operations at night have decreased by eleven (11) operations when compared to same period last year. Single and multi-engine aircraft operations have increased by one hundred and eight (108) operations and Mosquito Control operations have increased by eighty-six (86) operations. Total nighttime operations have increased by one hundred and ninety-five (195) operations, or thirty percent (30%) when compared to last year.

Noise Complaints

Compared to the previous quarter, noise complaints have decreased from 54 to 16. Northeast Quadrant neighborhoods generated the most complaints during the Fiscal Fourth Quarter of 2008, with a total of 6 complaints. Other areas generated the following number of complaints: Northwest-3, Southwest-0, Southeast-4 and Unknown locations-3.

Noise Complaints by Family

Fourteen (14) different families made 16 complaints to the Noise Abatement Office during the Fiscal Fourth Quarter of 2008. Two families from the northeast made 4 calls or 36% of the total complaints for this quarter.

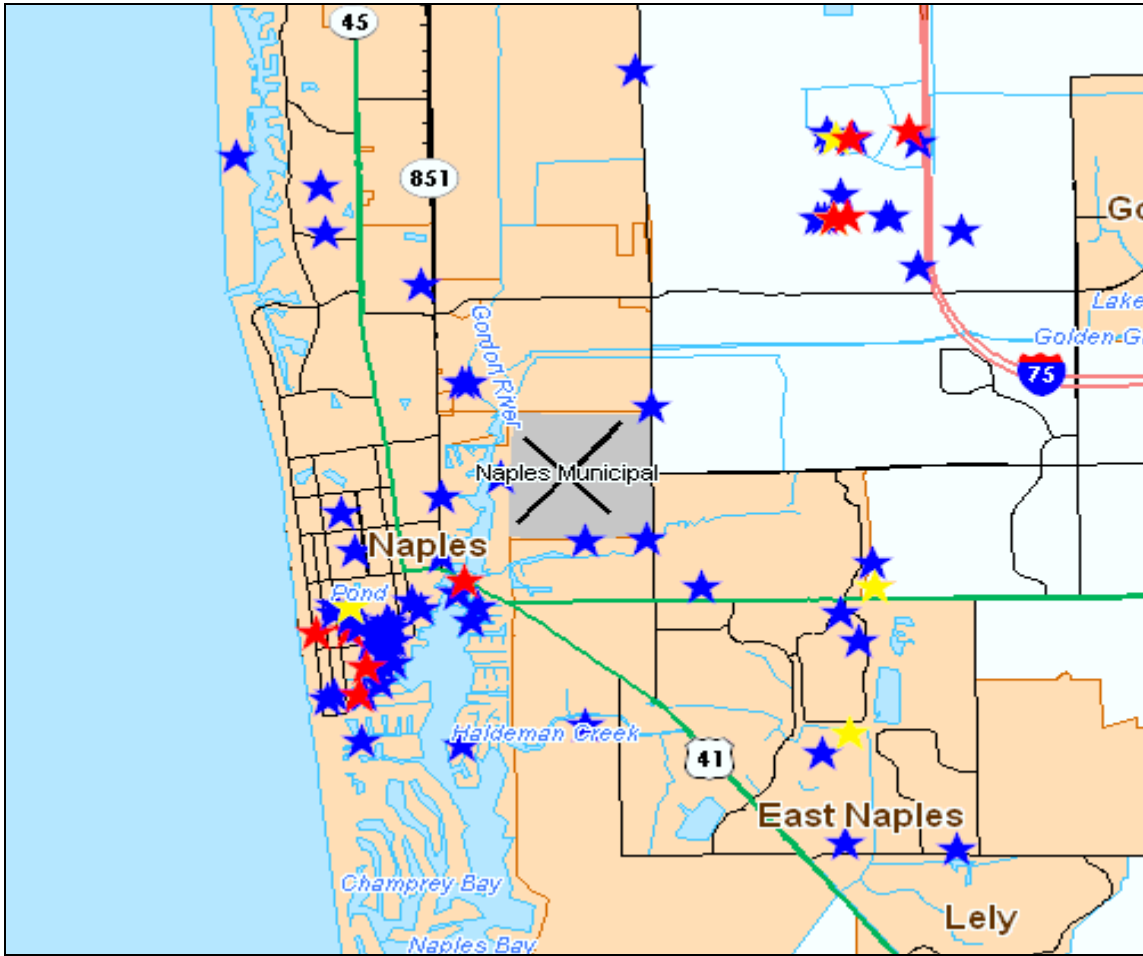
Air Traffic - Fiscal Year 2007 Compared to Fiscal Year 2008

FY08 operations have decreased by 3,008 operations (2%), from 132,739 to 129,731 operations when compared to FY07. Itinerant operations decreased by seven percent (7%) from 101,476 to 94,765 operations, and local operations have increased 12%, from 31,263 to 34,966 operations. Itinerant operations accounted for 73% of the total airport operations in FY08. IFR operations decreased by 5%, from 43,333 to 40,990.

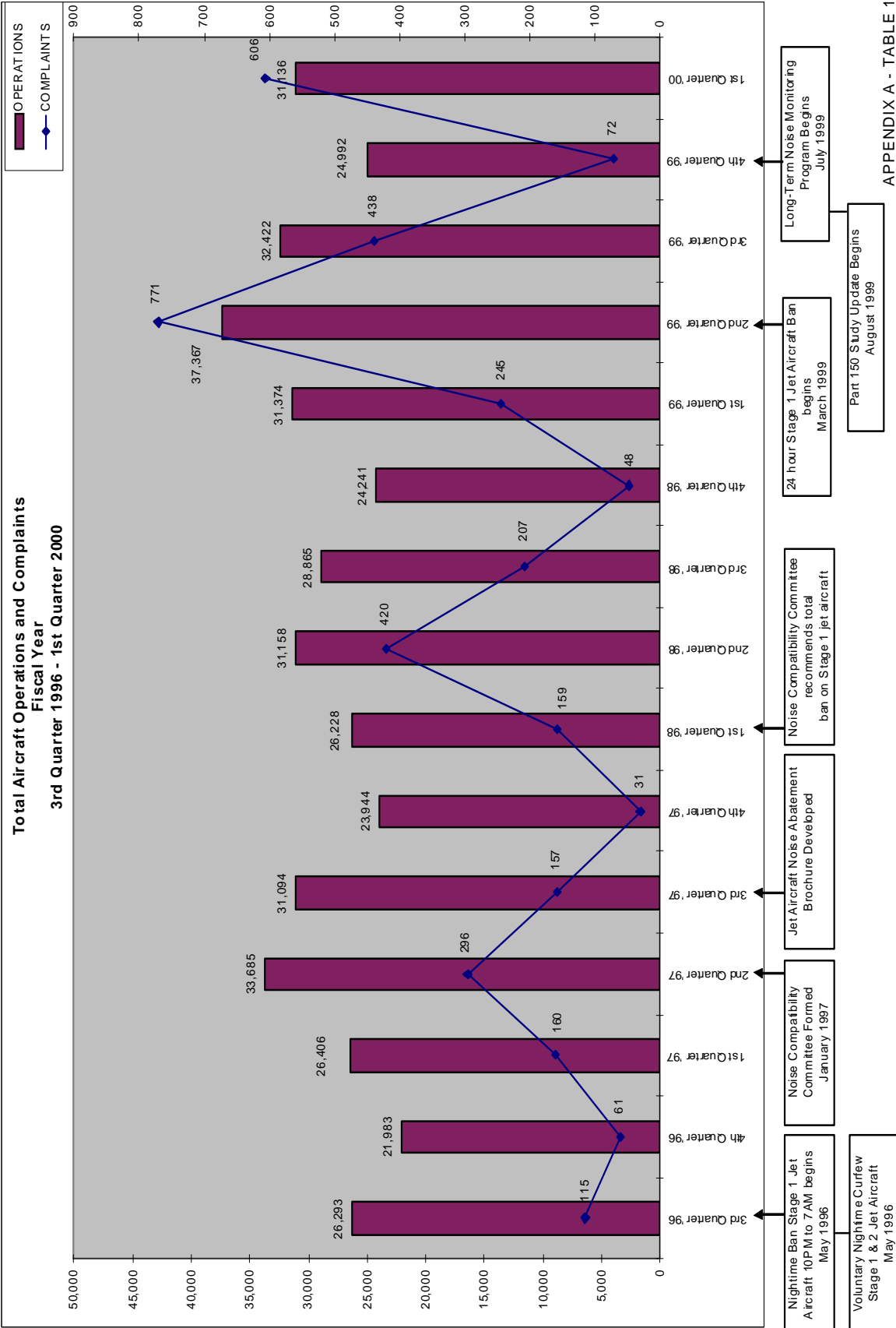
Complaints - Fiscal Year 2007 Compared to Fiscal Year 2008

Complaints have decreased 72% in Fiscal Year 2008, from 930 in FY07 to 265 in FY08

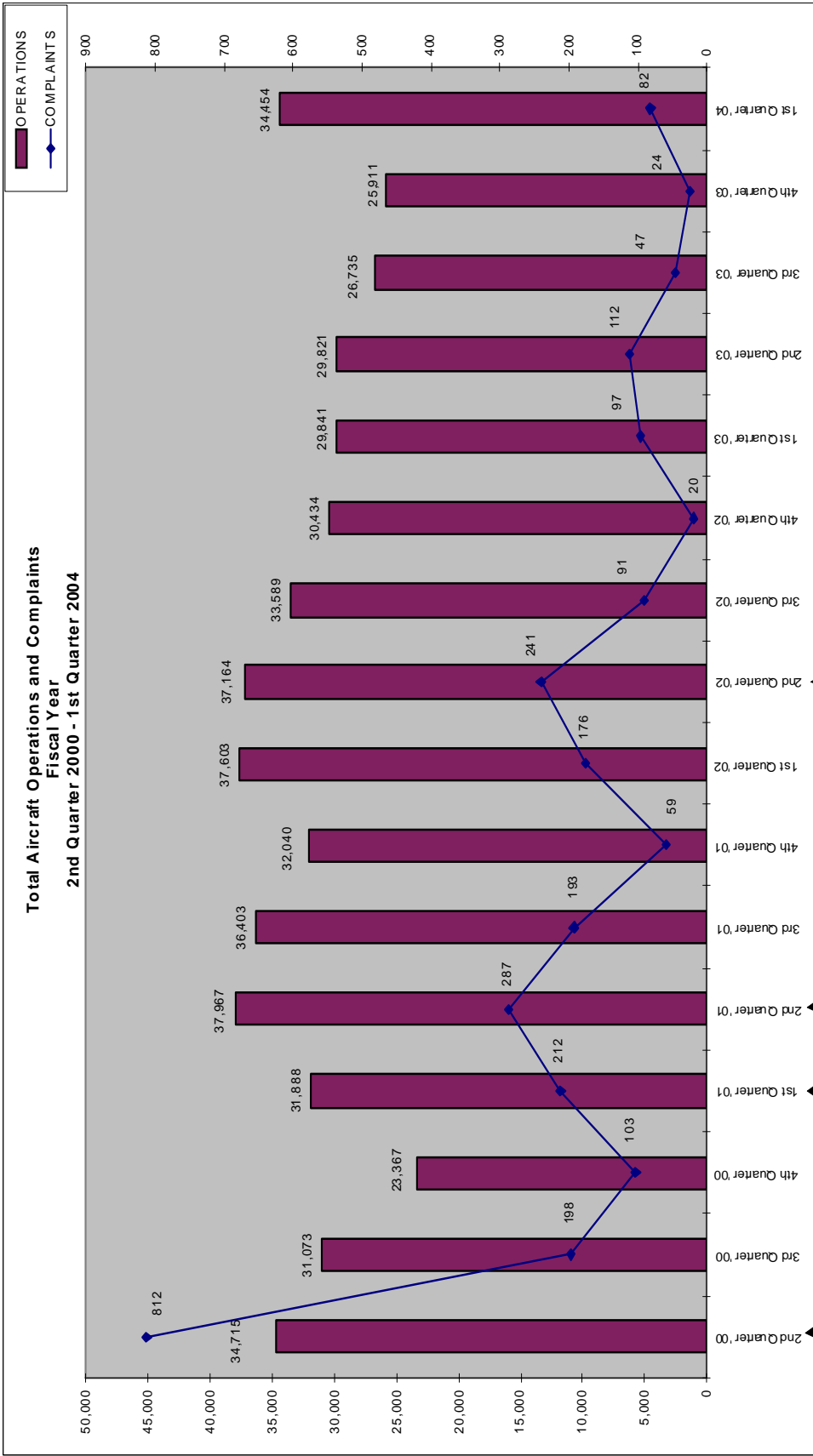
Below is a newly added map that depicts the location of complainants that provided an address, made during FY08.



Blue Star = less than 3 complaints
Yellow Star = between 3 and 5 complaints
Red Star = more than 5 complaints



APPENDIX A - TABLE 1



Part 161 Study for Operational Restrictions for Stage 2 Jet Aircraft Begins February 2000

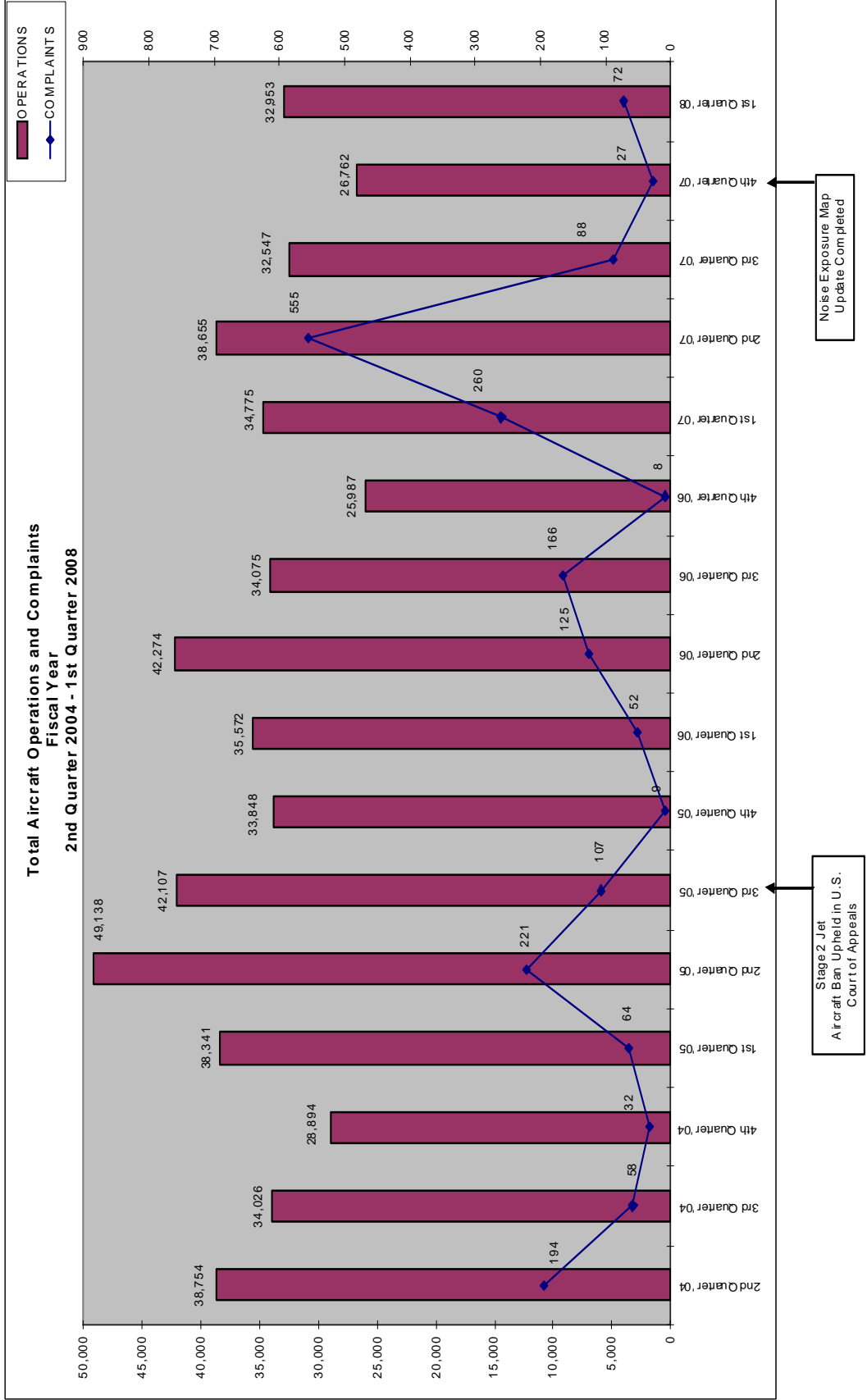
Waiver Program for Stage 2 Aircraft Begins November 2000

Ban on Stage 2 Jet Aircraft Begins (Non-enforcement) January 2001

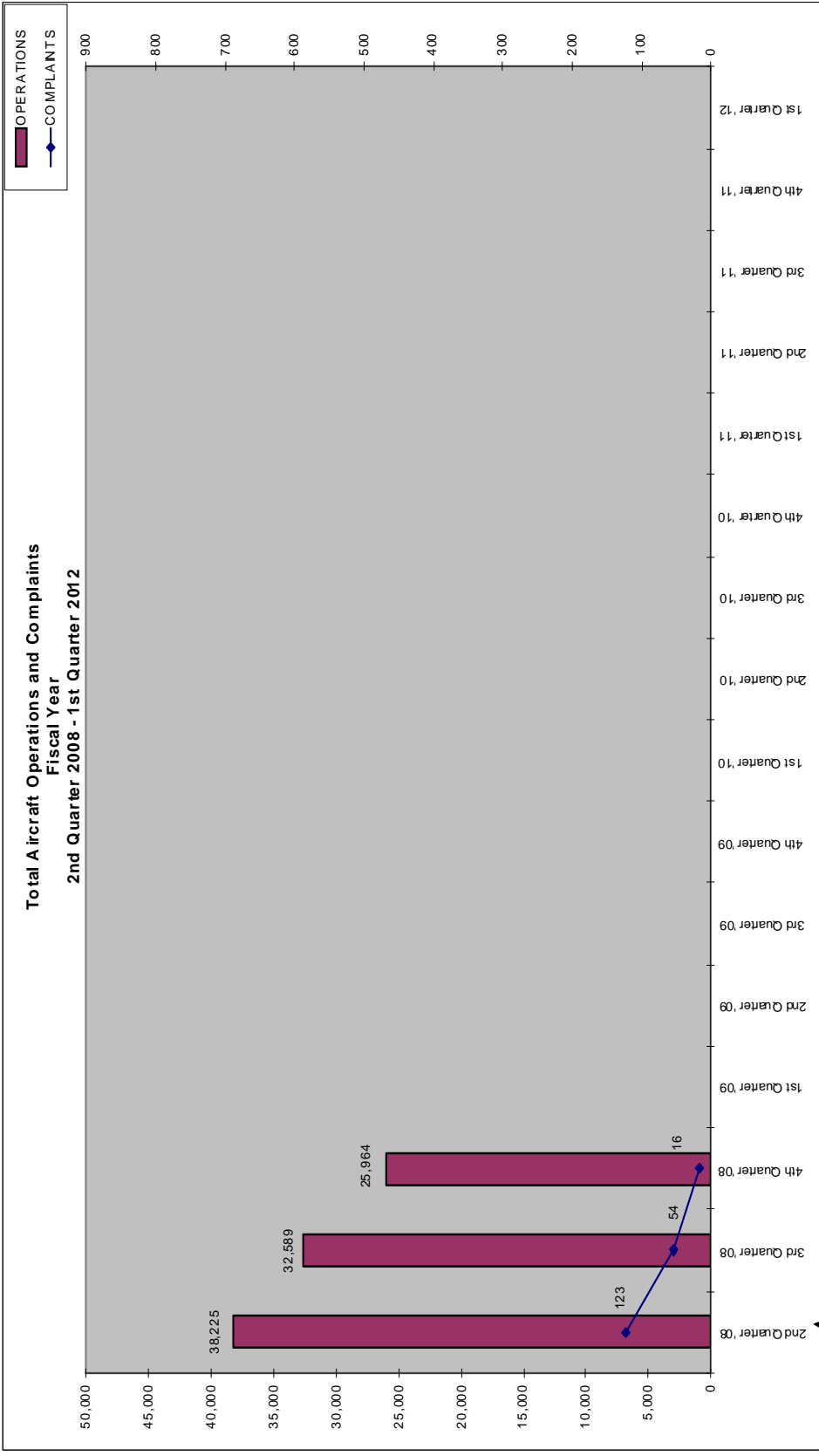
Supplemental Analysis for the Part 161 Study begins March 2001

Enforcement of Stage 2 Jet Aircraft Ban Begins March 2002

Waiver Program for Stage 2 Aircraft Ends March 2002

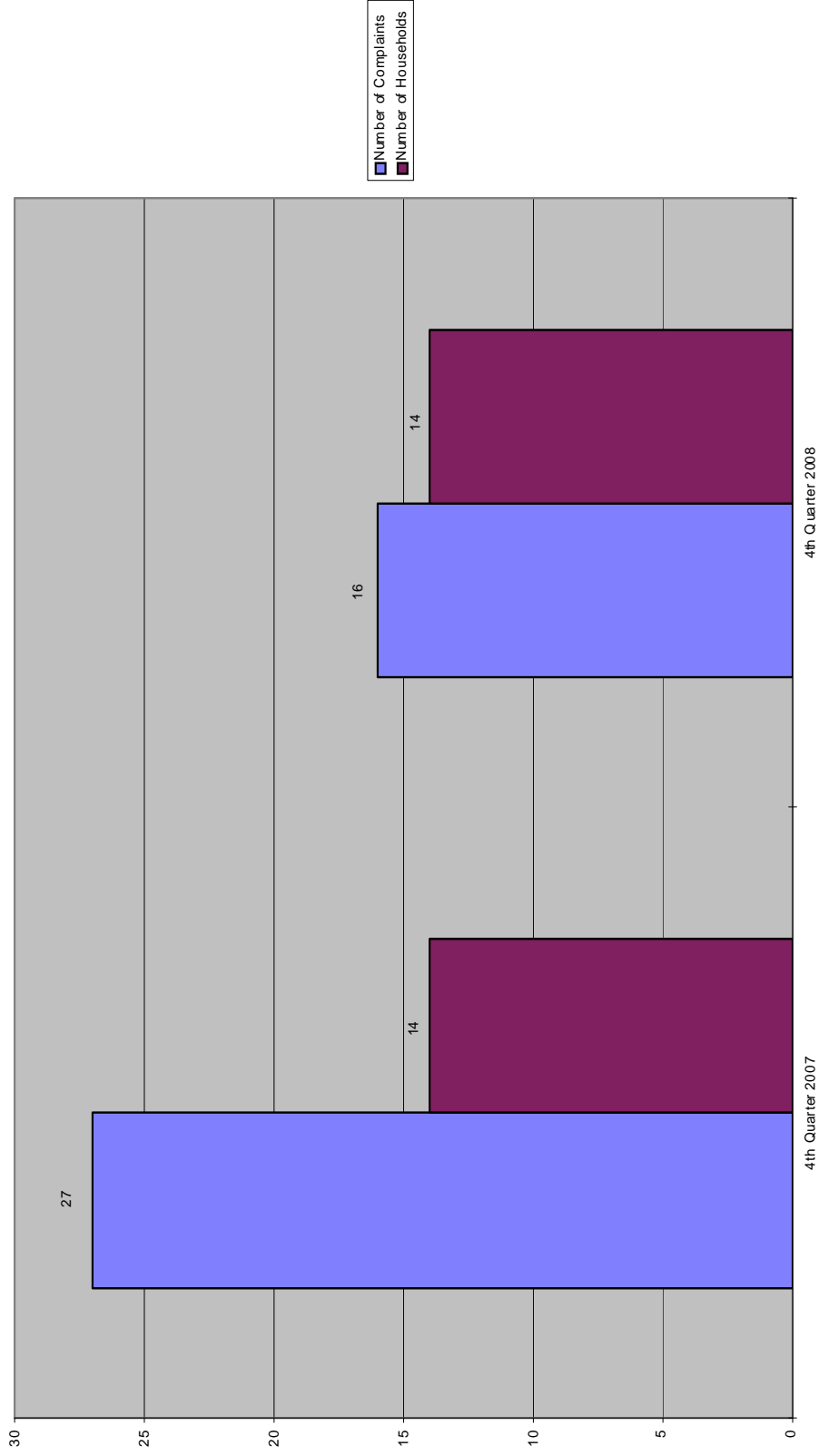


APPENDIX A - TABLE 3



Part 150 Study Update
begins - February

Number of Complaints vs. Number of Households
4th QUARTER



NOISE COMPLAINTS & OPERATIONS SUMMARY

APPENDIX C

MONTH: July 2008

DATE	7 AM - 10 PM								10 PM - 7 AM								TOTAL OPERATIONS		
	JET+HELO+PROP				JET OPS				JET+HELO+PROP				JET OPS						
	EVENTS	COMPLAINTS	OPERATIONS	TOTAL STAGE 1 OPERATIONS	TOTAL STAGE 2 OPERATIONS	AA STAGE 1 (EXEMPT)	AA STAGE 2 (EXEMPT)	AA STAGE 3 OPERATIONS	EVENTS	COMPLAINTS	OPERATIONS	TOTAL STAGE 1 OPERATIONS	TOTAL STAGE 2 OPERATIONS	AA STAGE 1 (EXEMPT)	AA STAGE 2 (EXEMPT)	AA STAGE 3 OPERATIONS		STAGE 3 GA OPERATIONS	STAGE 3 AT OPERATIONS
Tue-01			264								14						1		278
Wed-02			365								7						1		372
Thu-03			299								7								306
Fri-04			149								14						1		163
Sat-05			224								4								228
Sun-06			250								12						2		262
Mon-07	1	1	283								12								295
Tue-08			282								11						1		293
Wed-09			339								10						1		349
Thu-10			366								15							2	381
Fri-11			348								7						2		355
Sat-12			260								10								270
Sun-13			173								10						2		183
Mon-14			183								4						2		187
Tue-15			88								8								96
Wed-16			130								5						2		135
Thu-17			380						1	1	16						1		396
Fri-18			354								33						1		387
Sat-19			358						1	1	15								373
Sun-20			250								14								264
Mon-21			265								20						2		285
Tue-22			403								12						1		415
Wed-23			330						1	2	18						5		348
Thu-24			367								11								378
Fri-25			303								15								318
Sat-26			283						2	2	19								302
Sun-27			262								13								275
Mon-28			351								17						1		368
Tue-29			322								15						1		337
Wed-30			318								7								325
Thu-31			365								11						3		376
TOTALS	1	1	8,914	0	0	0	0	6	5	6	386	0	0	0	0	0	30	0	9,300

COMPLAINTS			
	DAY	NIGHT	TOTAL
Events	1	5	6
Complaints	1	6	7
Operations (Ops)	8,914	386	9,300
%Events/Ops	0.0%	1.3%	0.1%
Complaints & Events	1.0	0.8	0.9
% Complaints/ Ops	0.0%	1.6%	0.1%

NIGHT OPERATIONS	
Air Ambulance (AA)	J 0
EMS	H 26
Sheriff's Office	H 43
Mosquito Control	H 38
Mosquito Control	P 60
Public Service	J,H,P 167
Non-Jet Air Carrier & GA	H,P 189
Total GA Jet Ops	J 30
Total AT Jet Ops	J 0
Total Jet Operations	J 30
Night Ops - Total	J,H,P 386

RESTRICTIONS		Violations	Letters
Mandatory Restriction (MR)			
Runups: Maintenance		0	0
Jet Stage 1 day & night Ops		0	0
Jet Stage 2 day & night Ops		0	0
Voluntary Restriction (VR)			
Jet Stage 3 night Ops		0	0

NOISE COMPLAINTS & OPERATIONS SUMMARY

APPENDIX C

MONTH: August 2008

DATE	7 AM - 10 PM								10 PM - 7 AM								TOTAL OPERATIONS		
	JET+HELO+PROP			JET OPS					JET+HELO+PROP			JET OPS							
	EVENTS	COMPLAINTS	OPERATIONS	TOTAL STAGE 1 OPERATIONS	TOTAL STAGE 2 OPERATIONS	AA STAGE 1 (EXEMPT)	AA STAGE 2 (EXEMPT)	AA STAGE 3 OPERATIONS	EVENTS	COMPLAINTS	OPERATIONS	TOTAL STAGE 1 OPERATIONS	TOTAL STAGE 2 OPERATIONS	AA STAGE 1 (EXEMPT)	AA STAGE 2 (EXEMPT)	AA STAGE 3 OPERATIONS		STAGE 3 GA OPERATIONS	STAGE 3 AT OPERATIONS
Wed-01	1	1	410								17								427
Thur-02			275							11									286
Fri-03			391							1									392
Sat-04			252							5								2	257
Sun-05			346							11							1		357
Mon-06			345							12							2		357
Tue-07			379						1	1	9						1		388
Wed-08			397							13							3		410
Thur-09			254							10									264
Fri-10			280							6							1		286
Sat-11			325							6							1		331
Sun-12			359							4									363
Mon-13			280							6									286
Tue-14			372							6							1		378
Wed-15			368							7								2	375
Thur-16			305							10									315
Fri-17			309							4									313
Sat-18			86							5							1		91
Sun-19			14							0									14
Mon-20			227							5							1		232
Tue-21			134							2								2	136
Wed-22			256							2						1			258
Thu-23			204							9							2		213
Fri-24			268							6							1		274
Sat-25			362							18							3		380
Sun-26			374							13							2		387
Mon-27			321							11							2		332
Tue-28			304							22							3		326
Wed-29			257							18							2		275
Thu-30			221							6									227
Fri-31			26							3							2		29
TOTALS	1	1	8,701	0	0	0	2	12	1	1	258	0	0	0	0	1	29	0	8,959

COMPLAINTS			
	DAY	NIGHT	TOTAL
Events	1	1	2
Complaints	1	1	2
Operations (Ops)	8,701	258	8,959
%Events/Ops	0.0%	0.4%	0.0%
Complaints & Events	1.0	1.0	1.0
% Complaints/ Ops	0.0%	0.4%	0.0%

NIGHT OPERATIONS		
Air Ambulance (AA)	J	1
EMS	H	0
Sheriff's Office	H	50
Mosquito Control	H	14
Mosquito Control	P	34
Public Service	J,H,P	99
Non-Jet Air Carrier & GA	H,P	130
Total GA Jet Ops	J	29
Total AT Jet Ops	J	0
Total Jet Operations	J	30
Night Ops - Total	J,H,P	258

RESTRICTIONS		
	Violations	Letters
Mandatory Restriction (MR)		
Runups: Maintenance	0	0
Jet Stage 1 day & night Ops	0	0
Jet Stage 2 day & night Ops	0	0
Voluntary Restriction (VR)		
Jet Stage 3 night Ops	0	0

NOISE COMPLAINTS & OPERATIONS SUMMARY

APPENDIX C

MONTH: September 2008

DATE	7 AM - 10 PM								10 PM - 7 AM								TOTAL OPERATIONS		
	JET+HELO+PROP				JET OPS				JET+HELO+PROP				JET OPS						
	EVENTS	COMPLAINTS	OPERATIONS	TOTAL STAGE 1 OPERATIONS	TOTAL STAGE 2 OPERATIONS	AA STAGE 1 (EXEMPT)	AA STAGE 2 (EXEMPT)	AA STAGE 3 OPERATIONS	EVENTS	COMPLAINTS	OPERATIONS	TOTAL STAGE 1 OPERATIONS	TOTAL STAGE 2 OPERATIONS	AA STAGE 1 (EXEMPT)	AA STAGE 2 (EXEMPT)	AA STAGE 3 OPERATIONS		STAGE 3 GA OPERATIONS	STAGE 3 AT OPERATIONS
Mon-01			299								12								311
Tues-02			285						1	1	14							2	299
Wed-03			288								6								294
Thur-04			322								7							1	329
Fri-05			249								8								257
Sat-06	1	1	329						1	1	8								337
Sun-07			270								9								279
Mon-08			134								3							2	137
Tues-09			28								3								31
Wed-10			38								1							1	39
Thur-11			192								15							2	207
Fri-12			269						1	1	21							1	290
Sat-13	1	1	284								6							1	290
Sun-14			215								3								218
Mon-15			202								7							1	209
Tues-16			319								9							2	328
Wed-17			235								4							3	239
Thur-18			292								5							4	297
Fri-19			256								11							1	267
Sat-20			292								3								295
Sun-21	1	1	227								5							3	232
Mon-22			261								7							1	268
Tues-23			184								9							3	193
Wed-24			285								3							1	288
Thur-25			378								10								388
Fri-26			351								7							1	358
Sat-27			358								4							1	362
Sun-28			196								2								198
Mon-29			246								4							1	250
Tues-30	1	1	211								4							1	215
TOTALS	4	4	7,495	0	0	0	2	6	3	3	210	0	0	0	0	0	31	0	7,705

COMPLAINTS			
	DAY	NIGHT	TOTAL
Events	4	3	7
Complaints	4	3	7
Operations (Ops)	7,495	210	7,705
%Events/Ops	0.1%	1.4%	0.1%
Complaints & Events	1.0	1.0	1.0
% Complaints/ Ops	0.1%	1.4%	0.1%

NIGHT OPERATIONS	
Air Ambulance (AA)	J 0
EMS	H 8
Sheriff's Office	H 44
Mosquito Control	H 3
Mosquito Control	P 19
Public Service	J,H,P 74
Non-Jet Air Carrier & GA	H,P 105
Total GA Jet Ops	J 31
Total AT Jet Ops	J 0
Total Jet Operations	J 31
Night Ops - Total	J,H,P 210

RESTRICTIONS		Violations	Letters
Mandatory Restriction (MR)			
Runups: Maintenance		0	0
Jet Stage 1 day & night Ops		0	0
Jet Stage 2 day & night Ops		0	0
Voluntary Restriction (VR)			
Jet Stage 3 night Ops		0	0