



CITY OF NAPLES AIRPORT AUTHORITY

QUARTERLY NOISE REPORT

NUMBER 54

For the period

April 1, 2010 through June 30, 2010

Prepared by the
Noise Abatement Office

TABLE OF CONTENTS

		Page
INTRODUCTION		1
PART I	AIRCRAFT OPERATIONS	1
Figure IA	Total Monthly Operations	1
Figure IB	Total Night Operations by Month	2
Table I	Quarterly Air Traffic Nighttime Operations Summary	3
Table II	Fiscal Year Percentage of Nighttime Operations	3
PART II	CITIZEN COMMENTS	4
Figure IIA	Noise Comments by Geographical Area	5
PART III	COMMENTS BY TIMEFRAME	6
Figure IIIA	Noise Comments by Hour	6
Figure IIIB	Noise Comments by Month	6
PART IV	COMMENTS BY OPERATIONAL SOURCE	7
Figure IVA	Comments by Type Aircraft	7
PART V	COMMENTS BY OPERATION AND NATURE OF DISTURBANCE	8
Figure V	Comments by Operations	8
Figure VI	Comments by Nature of Disturbance	8
Appendix A	Total Aircraft Operations and Comments	
Appendix B	Noise Comment / Operations Summary (Apr/May/Jun)	

PART I AIRCRAFT OPERATIONS

INTRODUCTION

This is the fifty-fourth Quarterly Noise Report prepared by the City of Naples Airport Authority - Noise Abatement Office. This report is informational in nature. The information contained in this report is for fiscal year 2010 (April - June). All percentages are rounded to the nearest percent.

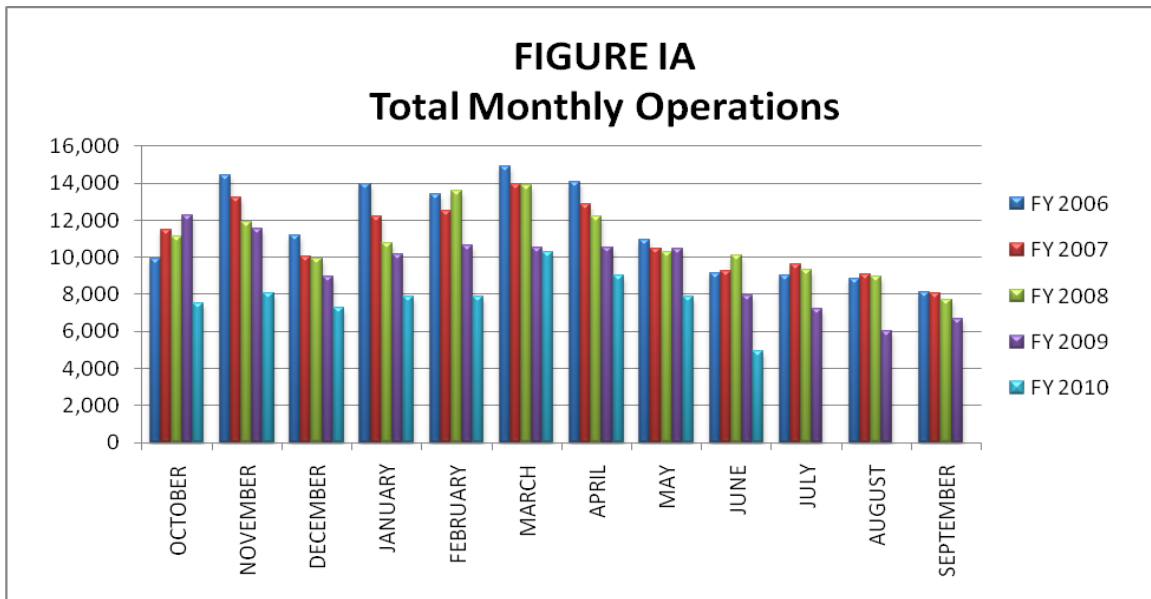
AIRCRAFT OPERATIONS

Figure 1A below contains aircraft movement data from FAA Form 7230-1 and after hour statistics recorded by the City of Naples Airport Authority Security Officers. Naples Air Traffic Control Tower is operational from 6:00 AM through 10:00 PM. A single movement represents either one arrival or one departure by the indicated aircraft.

This Quarter Compared to the Same Period One Year Ago

Compared to the same period last year, air carrier traffic (non-scheduled operators) has increased by 26% and general aviation air traffic has decreased by 27%. Total air traffic operations decreased by 24% from 28,943 operations to 21,868.

Figure 1A below illustrates the airport's month-by-month total operational levels for fiscal years 2006, 2007, 2008, 2009 and 2010.



Night Time Operations

Figure IB, below, illustrates the airport's monthly nighttime (10:00 PM – 7:00 AM) operational levels for fiscal year 2006, 2007, 2008, 2009 and 2010.

Total nighttime operations have decreased by twenty-seven percent (27%) in the Third Quarter of 2010 when compared to the Third Quarter 2009 statistics. Jet operations occurring at night decreased by 14 operations, or twelve percent (12%). And single and multi-engine aircraft operations decreased by 204 operations, or forty-seven percent (47%).

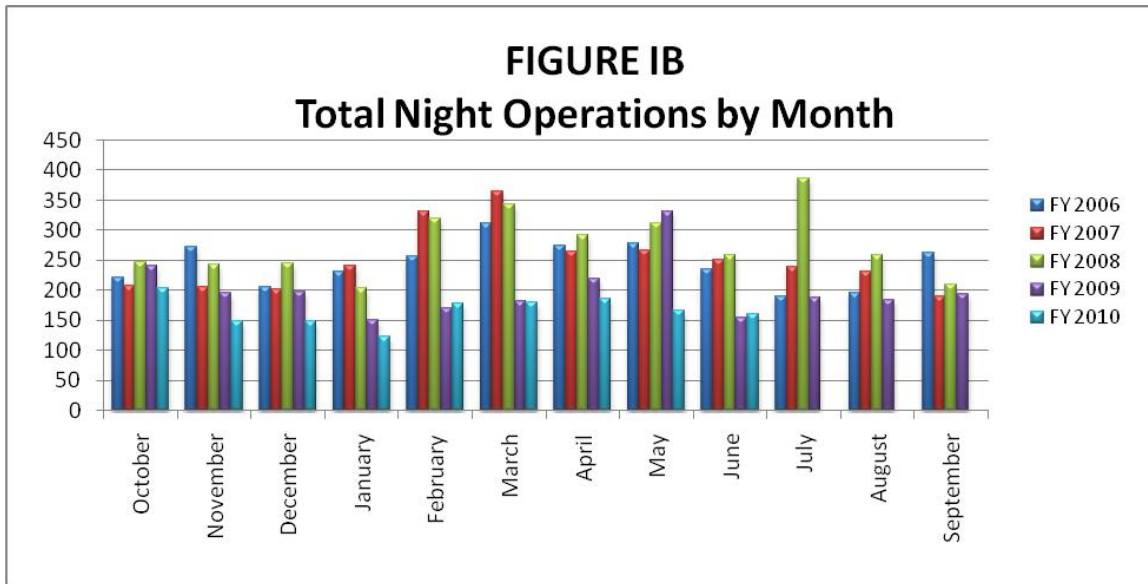


Table I, below, summarizes the types of nighttime operations occurring at the airport during the previous five quarters. Nighttime operations include voluntary curfew hours (10:00 PM through 7:00 AM). Public Service operations represent 34% of the activity occurring at night and nighttime operations accounted for two percent (2%) of the overall operations for the Third Quarter of 2010.

Table I
Quarterly Air Traffic Nighttime Operations Summary – by Fiscal Year

Activity	3 rd 2009	4 th 2009	1 st 2010	2 nd 2010	3 rd 2010	3 rd Quarter 2010 vs. 2009
Jets						
Air Ambulance	2	3	0	4	2	0%
Air Carrier	0	0	0	0	0	NMF
GA	118	45	152	199	104	(12%)
Subtotal Jets	120	48	152	203	106	(12%)
Single & Multi-engine (includes air carrier & GA)	439	281	192	158	233	(47%)
Public Service						
Mosquito Control Ops	11	101	11	0	9	(18%)
Collier Sheriff's Office	105	120	100	87	120	14%
EMS	28	14	44	31	42	50%
Coast Guard	2	0	0	0	2	0%
Subtotal Public Service	146	235	155	118	173	19%
Total	705	564	499	479	512	(27%)

NMF = No Meaningful Figure

Table II, depicts the percentage of nighttime operations as compared to total operations for the last eight fiscal years. Night operations represent three percent (3%) for FY 02 – 03 and two percent (2%) of the total operations for FY 04, FY 05, FY 06, FY 07, FY 08 and FY 09.

Table II
Fiscal Year Percentage of Nighttime Operations

Fiscal Year	Total Operations	Night Operations	% of Night Ops	% of Jet Night Ops
2002	138,790	3,626	3%	21%
2003	112,308	3,170	3%	23%
2004	136,128	3,361	2%	23%
2005	163,434	3,130	2%	34%*
2006	137,908	2,935	2%	38%*
2007	132,908	2,994	2%	29%*
2008	129,731	3,314	2%	24%
2009	112,903	2,407	2%	21%
2010 to date	70,728	1,490	2%	31%

* Delta began CRJ service in FY05. They had 328 nighttime operations in FY 05, 352 nighttime operations in FY 06 and 117 nighttime operations in FY 07. Without Delta's operations, the percentage of jet night operations in FY05 would have been twenty-four percent (24%) of the total nighttime operations and twenty-six percent (26%) of the total in FY 06 and twenty-five percent (25%) of the total in FY 07.

PART II CITIZEN COMMENTS

Citizen noise comments are separated according to four geographical areas (Quadrants). Below is a sample representation of the neighborhoods in each Quadrant. Every neighborhood in the area is not included in this list, although it is included in the Quadrant total.

Northeast Quadrant - Briarwood, Coconut River Estates, Golden Gate, Grey Oaks, Hawks Ridge, Wyndemere, and surrounding northeast areas.

Northwest Quadrant - Bears Paw, Coconut River Estates, Coquina Sands, Country Club of Naples, Lake Forest, Lake Park, Park Shore, Ridge Lakes, River Estates, River Reach, Sun Terrace, Moorings, Wilderness, and surrounding northwest areas.

Southwest Quadrant - Aqualane Shores, Old Naples, Port Royal, Royal Harbor, and surrounding southwest neighborhoods.

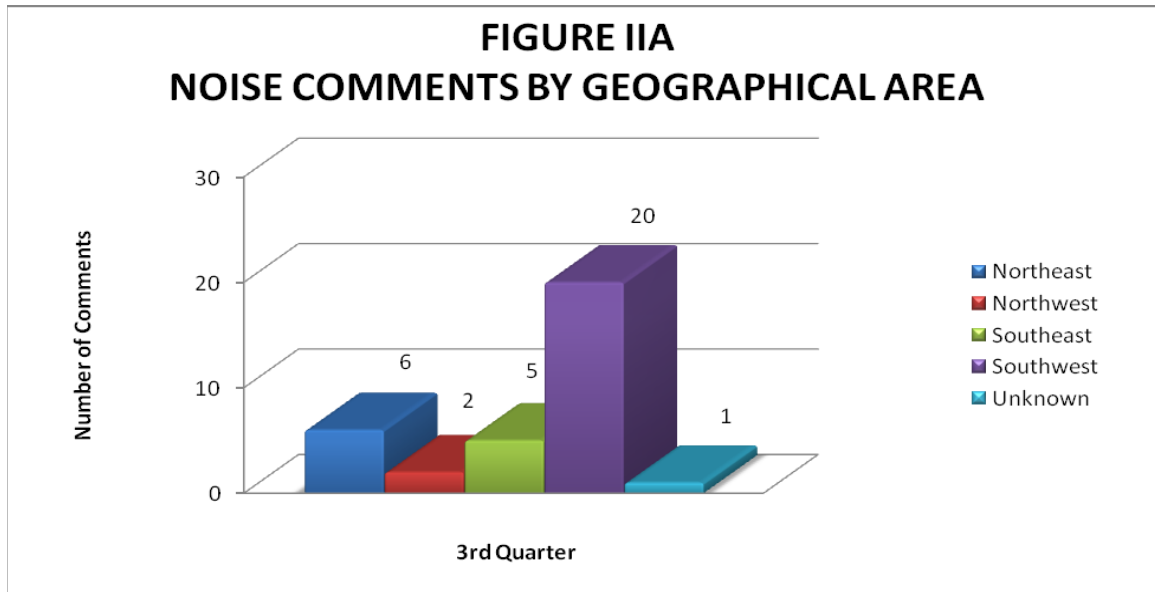
Southeast Quadrant - Brookside, Coconut Grove, Flamingo Estates, Foxfire, Kings Lake, Lakewood, Naples Gardens, Rock Creek Campground, The Glades, and surrounding neighborhoods.

The analysis will include the specific nature of the comment, whether it was an arriving or departing aircraft or an overflight. Comments relative to nighttime Mosquito Control operations, Air Ambulance Flights, Sheriff's Office and EMS helicopter operations are included in this report. Thanks to Mosquito Control publishing their flight operations, our noise complaints have decreased.

This Quarter Compared to the Same Period One Year Ago

Compared to the same period last year, the net total number of comments decreased by 6 calls, from 40 to 34 (or 15%) even though total operations have decreased by 24% and nighttime operations have decreased by 27%. Comments received from neighborhoods to the northeast of the airport have decreased by 10, from the northwest they decreased by 1, from the southeast they increased by 1, from the southwest they increased by 3, and unknown areas increased by 1.

Figure IIA, below, graphically compares the noise comments received by geographical areas based on data collected during the Third Quarter of 2010. Total comments for this quarter have decreased by fifteen percent (15%) when compared to the same period one year ago.



PART III COMMENTS BY TIMEFRAME

Figure IIIA, below, depicts noise comments for the Third Quarter according to the time of the single event. The highest number of comments was received during the 5:00 AM, 11:00 AM, 4:00 PM and 10:00 PM hours. Forty-four percent (44%) of the total comments were received during the voluntary curfew hours.

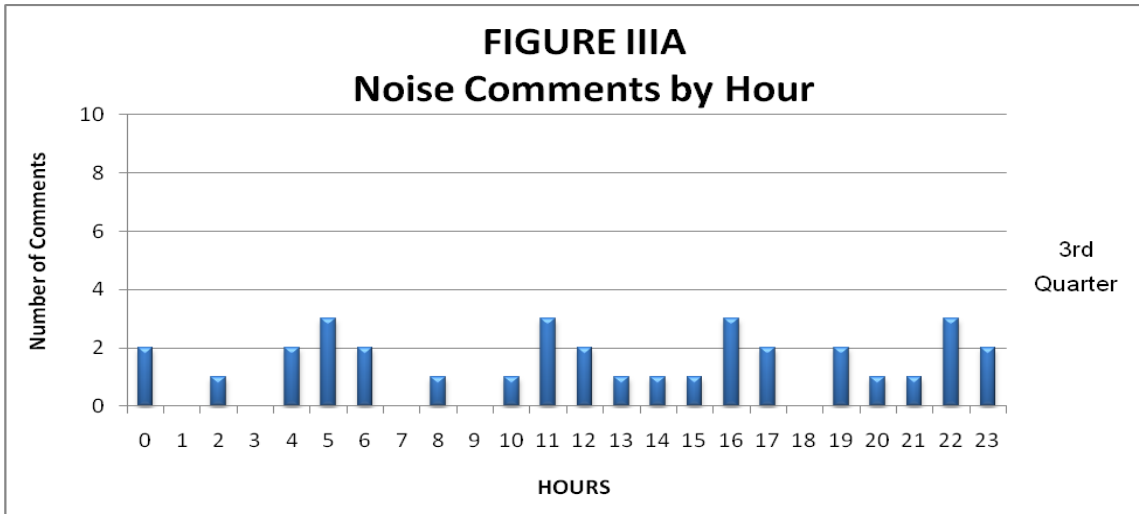
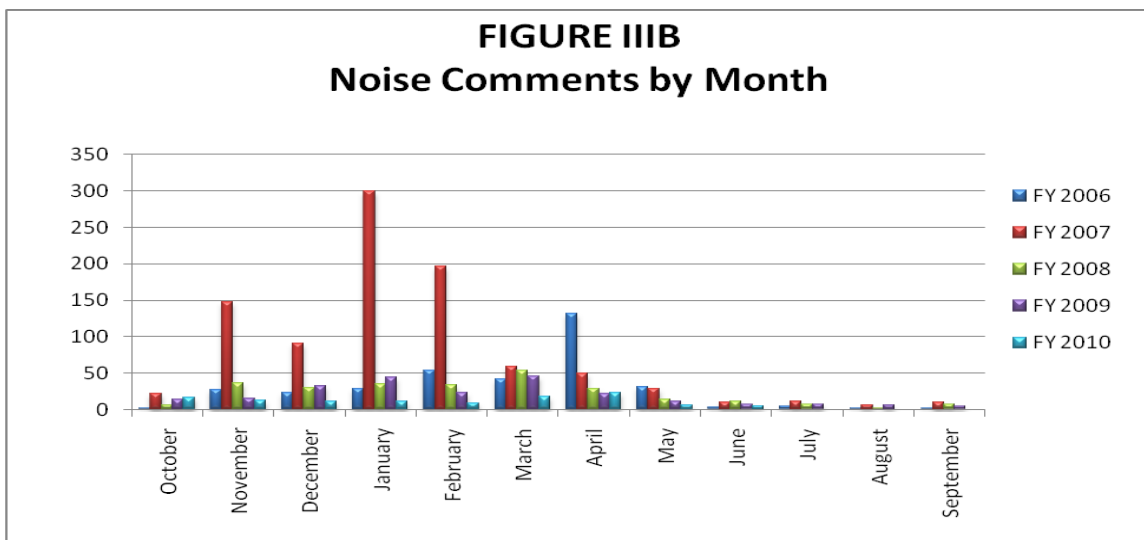


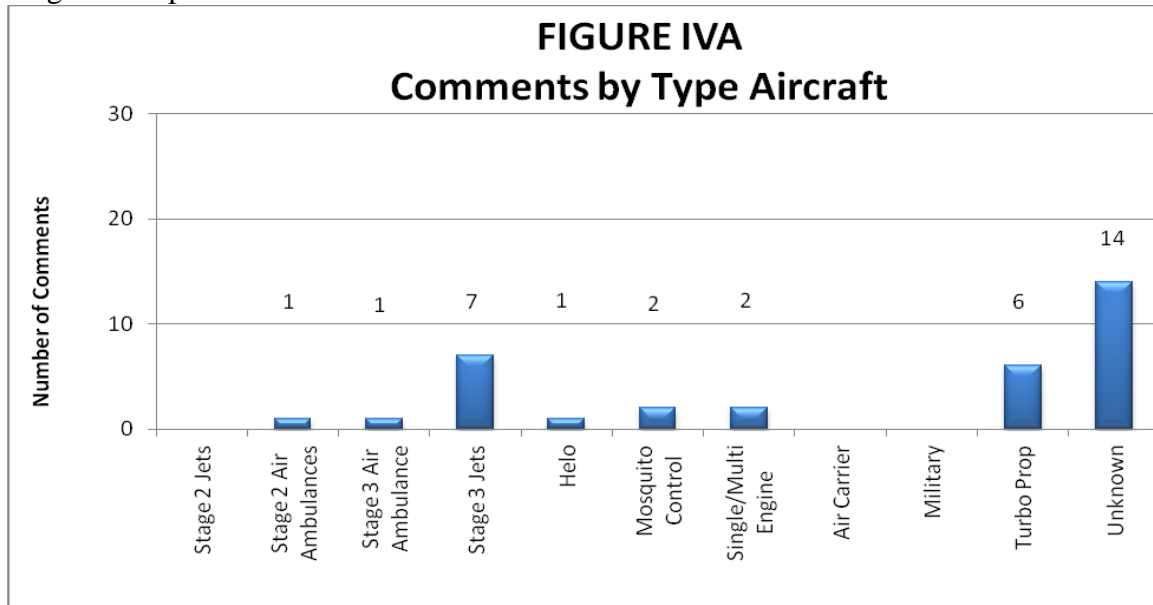
Figure IIIB below, illustrates the airport's comment volume for fiscal years 2006, 2007, 2008, 2009 and 2010.



*1st Quarter 2007 – 205 comments generated from the Northeast Quad
 *2nd Quarter 2007 – 555 comments generated from the Northeast Quad

PART IV COMMENTS BY OPERATIONAL SOURCE

Figure IVA below, indicates what types of aircraft the callers were calling about. Forty-one percent (41%) of the comments were about unknown operations (or multiple aircraft, not one aircraft in particular), and twenty-one percent (21%) of the comments were about Stage 3 Jet operations.



PART V
COMMENTS BY OPERATION AND NATURE OF DISTURBANCE

Figure V below, shows the operational source of the noise comments from the Third Quarter of 2010. The data indicates that arrivals account for the main operational source of comments.

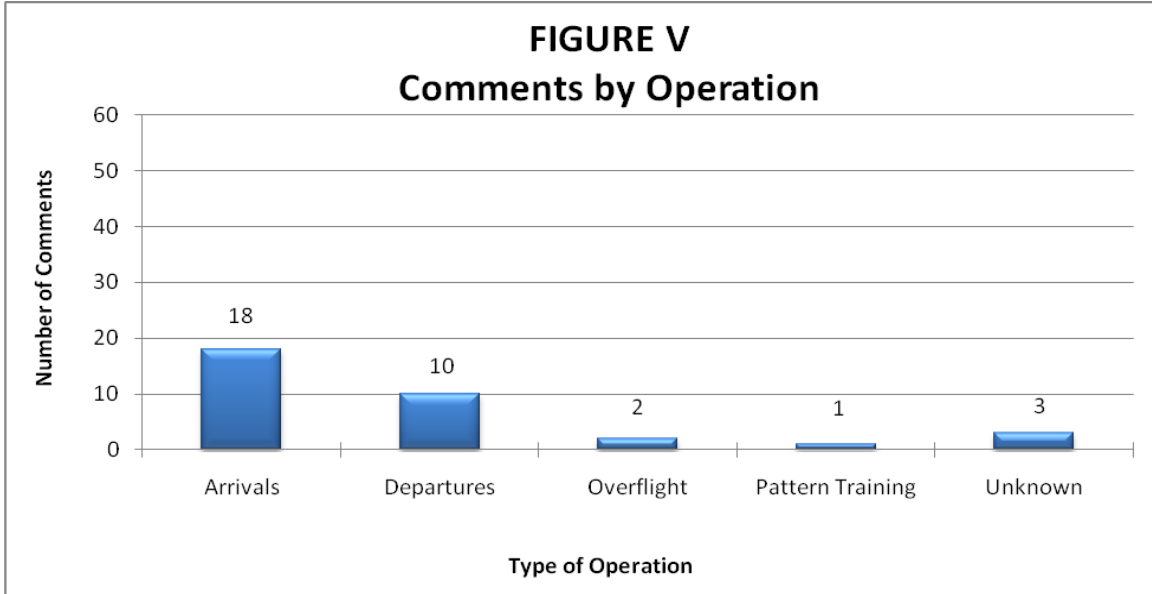
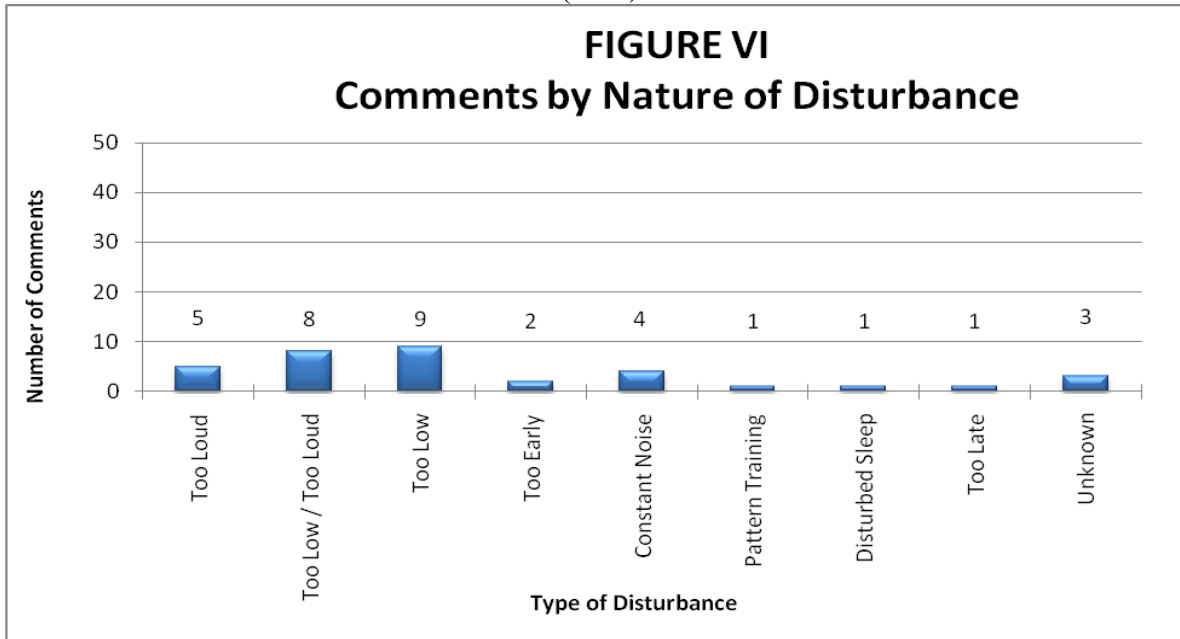
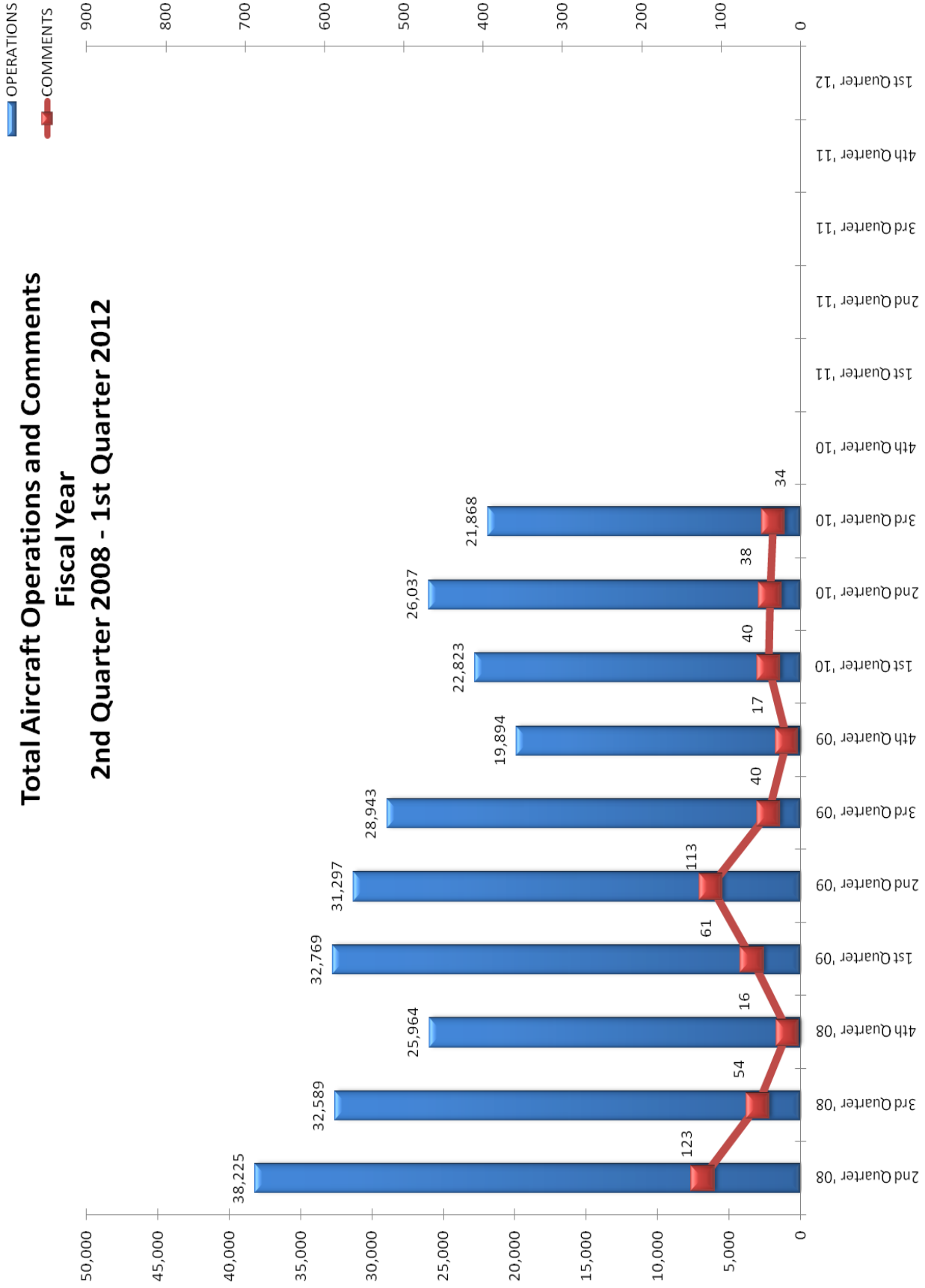


Figure VI below indicates the nature of the disturbances from callers during this quarter. Most calls were in reference to “Too Low” (26%).



Total Aircraft Operations and Comments Fiscal Year 2nd Quarter 2008 - 1st Quarter 2012



Part 150 Study Update begins - February

NOISE COMMENTS & OPERATIONS SUMMARY

APPENDIX C

MONTH: April-10

DATE	7 AM - 10 PM							10 PM - 7 AM							TOTAL OPERATIONS				
	JET+HELO+PROP			JET OPS				JET+HELO+PROP			JET OPS								
	EVENTS	COMMENTS	OPERATIONS	TOTAL STAGE 1 OPERATIONS	TOTAL STAGE 2 OPERATIONS	AA STAGE 1 (EXEMPT)	AA STAGE 2 (EXEMPT)	AA STAGE 3 OPERATIONS	EVENTS	COMMENTS	OPERATIONS	TOTAL STAGE 1 OPERATIONS	TOTAL STAGE 2 OPERATIONS	AA STAGE 1 (EXEMPT)		AA STAGE 2 (EXEMPT)	AA STAGE 3 OPERATIONS	STAGE 3 GA OPERATIONS	STAGE 3 AT OPERATIONS
Thur-01	1	1	424								10							5	434
Fri-02	1	1	394								9							1	403
Sat-03	1	1	282								5							1	287
Sun-04			199								7							3	206
Mon-05			323						2	2	8							5	331
Tue-06	1	1	350								6							1	356
Wed-07			317								7							1	324
Thur-08			269						1	1	16					2			285
Fri-09	2	2	278								2								280
Sat-10			334						2	3	10							2	344
Sun-11	1	1	206								4							1	210
Mon-12			257								8							6	265
Tue-13			253								12							4	265
Wed-14			267								2							1	269
Thur-15			300															1	310
Fri-16			321						3	3	10							3	325
Sat-17			280								4								287
Sun-18			129								7								132
Mon-19	1	1	243								3								246
Tue-20			330						1	1	7							1	337
Wed-21			325								9							1	334
Thur-22			412								4							1	416
Fri-23	1	1	367								9							2	376
Sat-24			207																207
Sun-25			228								2								230
Mon-26	1	1	154								4							1	158
Tue-27	1	1	369								2								371
Wed-28			328								1							1	329
Thur-29			370								10							4	380
Fri-30	1	1	295						1	1	4							2	299
Sat-31																			0
TOTALS	12	12	8,811	0	0	0	3	7	10	11	185	0	0	0	0	2	47	0	8,996

COMMENTS	DAY	NIGHT	TOTAL
Events	12	10	22
Comments	12	11	23
Operations (Ops)	8,811	185	8,996
%Events/Ops	0.1%	5.4%	0.2%
Comments & Events	10	0.9	10
% Comments / Ops	0.1%	5.9%	0.3%

NIGHT OPERATIONS		
Air Ambulance (AA)	J	2
EMS	H	18
Sheriff's Office	H	37
Mosquito Control	H	0
Mosquito Control	P	0
Military	H	0
Public Service	J,H,P	57
Non-Jet Air Carrier & GA	HP	81
Total GA Jet Ops	J	49
Total AT Jet Ops	J	0
Total Jet Operations	J	49
Night Ops - Total	J,H,P	185

RESTRICTIONS	Violations	Letters
Mandatory Restriction (MR)		
Runups: Maintenance	0	0
Jet Stage 1 day & night Ops	0	0
Jet Stage 2 day & night Ops	0	0
Voluntary Restriction (VR)		
Jet Stage 3 night Ops	150	67

NOISE COMMENTS & OPERATIONS SUMMARY

APPENDIX B

MONTH: May 2010

DATE	7 AM - 10 PM						10 PM - 7 AM						TOTAL OPERATIONS						
	JET+HELO+PROP			JET OPS			JET+HELO+PROP			JET OPS									
	EVENTS	COMMENTS	OPERATIONS	TOTAL STAGE 1 OPERATIONS	TOTAL STAGE 2 OPERATIONS	AA STAGE 1 (EXEMPT)	AA STAGE 2 (EXEMPT)	AA STAGE 3 OPERATIONS	EVENTS	COMMENTS	OPERATIONS	TOTAL STAGE 1 OPERATIONS		TOTAL STAGE 2 OPERATIONS	AA STAGE 1 (EXEMPT)	AA STAGE 2 (EXEMPT)	AA STAGE 3 OPERATIONS	STAGE 3 GA OPERATIONS	STAGE 3 AT OPERATIONS
Sat-01			177								7						1		184
Sun-02			209					1	1	6							1		215
Mon-03			203							4							1		207
Tue-04			347							9							1		356
Wed-05			345							3							1		348
Thu-06			376							6							1		382
Fri-07			329							6									335
Sat-08			266							4							2		270
Sun-09			189							11							2		200
Mon-10			209							7							1		216
Tue-11			258							3									261
Wed-12			301							3							1		304
Thu-13			333							2							1		335
Fri-14			302							7							2		309
Sat-15			217							6									223
Sun-16	1	1	139							3							2		142
Mon-17			255							5							3		260
Tue-18	1	1	305							10							3		315
Wed-19			238							3							2		241
Thu-20			278							5							3		283
Fri-21	1	1	301							10							3		311
Sat-22			243							9							2		252
Sun-23			178							6							1		184
Mon-24			257							5									262
Tue-25			307							7							1		314
Wed-26			257							1									258
Thu-27	1	1	207							1							1		208
Fri-28			249						1	1	6						1		255
Sat-29			167							5							1		172
Sun-30			133							3							1		136
Mon-31			167							4									171
TOTALS	4	4	7,742	0	0	0	1	8	2	2	167	0	0	0	0	0	39	0	7,909

COMMENTS	DAY	NIGHT	TOTAL
Events	4	2	6
Comments	4	2	6
Operations (Ops)	7,742	167	7,909
%Events/Ops	0.1%	12%	0.1%
Comments & Events	10	10	10
%Comments/Ops	0.1%	12%	0.1%

NIGHT OPERATIONS		
Air Ambulance (AA)	J	0
EMS	H	13
Sheriff's Office	H	40
Mosquito Control	H	0
Mosquito Control	P	1
Military	H	0
Public Service	J,H,P	54
Non-Jet Air Carrier & GA	HP	74
Total GA Jet Ops	J	39
Total AT Jet Ops	J	0
Total Jet Operations	J	39
Night Ops - Total	J,H,P	167

RESTRICTIONS	Violations	Letters
Mandatory Restriction (MR)		
Runups: Maintenance	0	0
Jet Stage 1 day & night Ops	0	0
Jet Stage 2 day & night Ops	0	0
Voluntary Restriction (VR)		
Jet Stage 3 night Ops	127	61

NOISE COMMENTS & OPERATIONS SUMMARY

APPENDIX B

MONTH: June 2010

DATE	7 AM - 10 PM							10 PM - 7 AM							TOTAL OPERATIONS				
	JET+HELO+PROP			JET OPS				JET+HELO+PROP			JET OPS								
	EVENTS	COMMENTS	OPERATIONS	TOTAL STAGE 1 OPERATIONS	TOTAL STAGE 2 OPERATIONS	AA STAGE 1 (EXEMPT)	AA STAGE 2 (EXEMPT)	AA STAGE 3 OPERATIONS	EVENTS	COMMENTS	OPERATIONS	TOTAL STAGE 1 OPERATIONS	TOTAL STAGE 2 OPERATIONS	AA STAGE 1 (EXEMPT)		AA STAGE 2 (EXEMPT)	AA STAGE 3 OPERATIONS	STAGE 3 GA OPERATIONS	STAGE 3 AT OPERATIONS
Tue-01			304								7							2	311
Wed-02			261								2							1	263
Thu-03			185								6							1	191
Fri-04			210								2								212
Sat-05			166								6								172
Sun-06			124								2								126
Mon-07			160								8							1	168
Tue-08			173						1	1	5							4	178
Wed-09			187								3								190
Thu-10			181								9								190
Fri-11			135								12								147
Sat-12			121								6								127
Sun-13			142								2								144
Mon-14	2	2	157								2							1	159
Tue-15			150								5							1	155
Wed-16			148								4								152
Thu-17			169								5							1	174
Fri-18			158								2							1	160
Sat-19			152								5								157
Sun-20			116								0								116
Mon-21			123								4							1	127
Tue-22			118								4								122
Wed-23			181								8							1	189
Thu-24			162								11							2	173
Fri-25			187								6								193
Sat-26			122								3								125
Sun-27			105								5								110
Mon-28			130								2							1	132
Tue-29			142						1	2	9								151
Wed-30			134								15								149
TOTALS	2	2	4,803	0	0	0	0	2	2	3	160	0	0	0	0	0	18	0	4,963

COMMENTS				NIGHT OPERATIONS				RESTRICTIONS			
	DAY	NIGHT	TOTAL							Violations	Letters
Events	2	2	4	Air Ambulance (AA)	J		0				
Comments	2	3	5	EMS	H		11	Mandatory Restriction (MR)			
Operations (Ops)	4,803	160	4,963	Sheriff's Office	H		43	Runups: Maintenance		0	0
%Events/Ops	0.0%	13%	0.1%	Mosquito Control	H		2	Jet Stage 1 day & night Ops		0	0
				Mosquito Control	P		6	Jet Stage 2 day & night Ops		0	0
				Military			2				
				Public Service	J,H,P		64				
				Non-Jet Air Carrier & GA	HP		78	Voluntary Restriction (VR)			
Comments & Events	10	0.7	0.8	Total GA Jet Ops	J		18				
				Total AT Jet Ops	J		0				
				Total Jet Operations	J		18	Nighttime Operations		117	0
%Comments/Ops	0.0%	19%	0.1%	Night Ops - Total	J,H,P		160				