



**CITY OF NAPLES AIRPORT AUTHORITY**

**QUARTERLY NOISE REPORT**

NUMBER 55

For the period

July 1, 2010 through September 30, 2010

Prepared by the  
Noise Abatement Office

## TABLE OF CONTENTS

|  |   | Page |
|--|---|------|
| <b>INTRODUCTION</b>  |   | 1    |
| <b>PART I      AIRCRAFT OPERATIONS</b>   |   | 1    |
| Figure IA  | Total Monthly Operations                              | 1    |
| Figure IB  | Total Night Operations by Month                       | 2    |
| Table I  | Quarterly Air Traffic Nighttime<br>Operations Summary | 3    |
| Table II   | Fiscal Year Percentage of Nighttime<br>Operations     | 3    |
| <b>PART II     CITIZEN COMMENTS</b>  |   | 4    |
| Figure IIA   | Noise Comments by<br>Geographical Area                | 5    |
| <b>PART III    COMMENTS BY TIMEFRAME</b>   |   | 6    |
| Figure IIIA  | Noise Comments by Hour                                | 6    |
| Figure IIIB  | Noise Comments by Month                               | 6    |
| <b>PART IV     COMMENTS BY OPERATIONAL SOURCE</b>                                  |   | 7    |
| Figure IVA   | Comments by Type Aircraft                             | 7    |
| <b>PART V     COMMENTS BY OPERATION AND NATURE<br/>             OF DISTURBANCE</b> |   | 8    |
| Figure V   | Comments by Operations                                | 8    |
| Figure VI  | Comments by Nature of Disturbance                     | 8    |
| Appendix A   | Total Aircraft Operations and Comments                |      |
| Appendix B   | Noise Comment / Operations Summary (Jul/Aug/Sep)      |      |

# PART I AIRCRAFT OPERATIONS

## INTRODUCTION

This is the fifty-fifth Quarterly Noise Report prepared by the City of Naples Airport Authority - Noise Abatement Office. This report is informational in nature. The information contained in this report is for fiscal year 2010 (July - September). All percentages are rounded to the nearest percent.

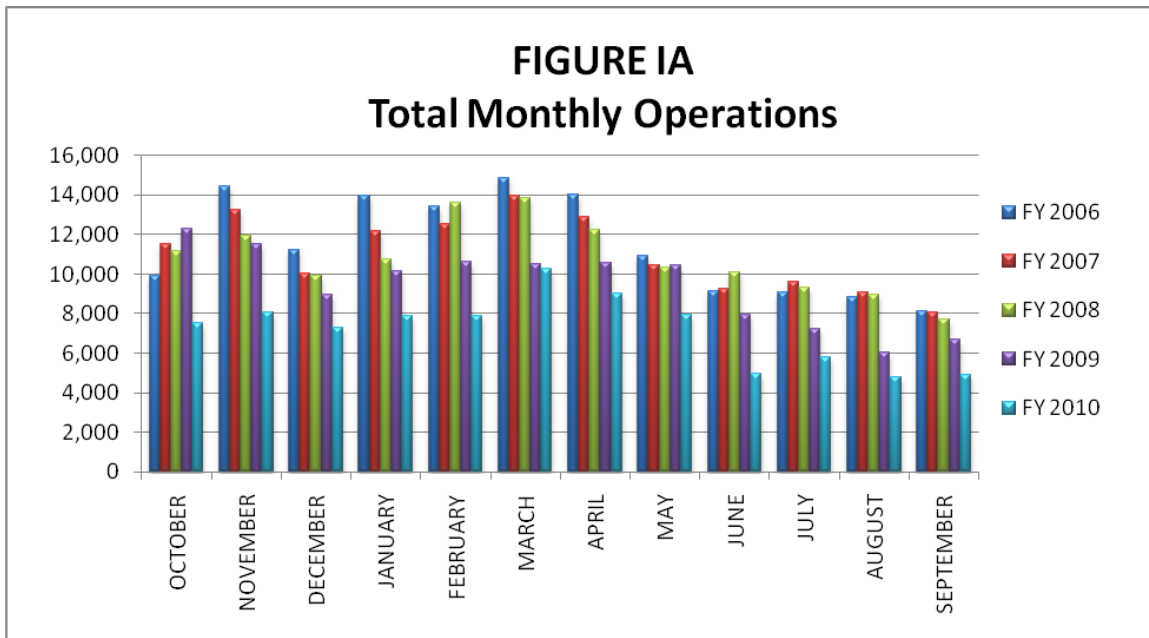
## AIRCRAFT OPERATIONS

Figure 1A below contains aircraft movement data from FAA Form 7230-1 and after hour statistics recorded by the City of Naples Airport Authority Security Officers. Naples Air Traffic Control Tower is operational from 6:00 AM through 10:00 PM. A single movement represents either one arrival or one departure by the indicated aircraft.

### **This Quarter Compared to the Same Period One Year Ago**

Compared to the same period last year, air carrier traffic (non-scheduled operators) has increased by 16% and general aviation air traffic has decreased by 24%. Total air traffic operations decreased by 22% from 19,894 operations to 15,459.

Figure 1A below illustrates the airport's month-by-month total operational levels for fiscal years 2006, 2007, 2008, 2009 and 2010.



### Night Time Operations

Figure IB, below, illustrates the airport's monthly nighttime (10:00 PM – 7:00 AM) operational levels for fiscal year 2006, 2007, 2008, 2009 and 2010.

Total nighttime operations have decreased by 15% in the Fourth Quarter of 2010 when compared to the Fourth Quarter 2009 statistics. Jet operations occurring at night decreased by 1 operation, or 2%, and single and multi-engine aircraft operations decreased by 110 operations, or thirty-nine percent (39%).

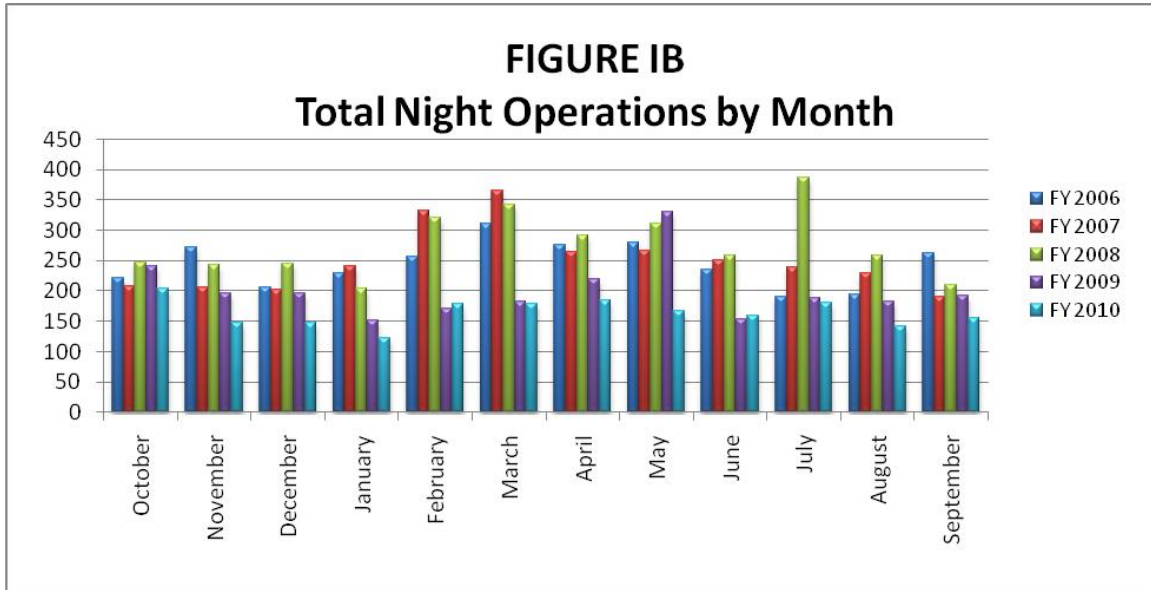


Table I, below, summarizes the types of nighttime operations occurring at the airport during the previous five quarters. Nighttime operations include voluntary curfew hours (10:00 PM through 7:00 AM). Public Service operations represent 54% of the activity occurring at night and nighttime operations accounted for two percent (2%) of the overall operations for the Fourth Quarter of 2010.

**Table I**  
**Quarterly Air Traffic Nighttime Operations Summary – by Fiscal Year**

| Activity   | 4 <sup>th</sup> 2009 | 1 <sup>st</sup> 2010 | 2 <sup>nd</sup> 2010 | 3 <sup>rd</sup> 2010 | 4 <sup>th</sup> 2010 | 4th Quarter<br>2010 vs. 2009 |
|--|----------------------|----------------------|----------------------|----------------------|----------------------|------------------------------|
| <b>Jets</b>  |                      |                      |                      |                      |                      |                              |
| Air Ambulance  | 3                    | 0                    | 4                    | 2                    | 0                    | NMF                          |
| Air Carrier  | 0                    | 0                    | 0                    | 0                    | 0                    | NMF                          |
| GA   | 45                   | 152                  | 199                  | 104                  | 48                   | 7%                           |
| <b>Subtotal Jets</b>   | <b>48</b>            | <b>152</b>           | <b>203</b>           | <b>106</b>           | <b>47</b>            | <b>(2%)</b>                  |
| <b>Single &amp; Multi-engine<br/>(includes air carrier &amp; GA)</b> | <b>281</b>           | <b>192</b>           | <b>158</b>           | <b>233</b>           | <b>171</b>           | <b>(39%)</b>                 |
| <b>Public Service</b>  |                      |                      |                      |                      |                      |                              |
| Mosquito Control Ops   | 101                  | 11                   | 0                    | 9                    | 99                   | (2%)                         |
| Collier Sheriff's Office   | 120                  | 100                  | 87                   | 120                  | 116                  | (3%)                         |
| EMS  | 14                   | 44                   | 31                   | 42                   | 43                   | 207%                         |
| Coast Guard  | 0                    | 0                    | 0                    | 2                    | 1                    | NMF                          |
| <b>Subtotal Public Service</b>                                       | <b>235</b>           | <b>155</b>           | <b>118</b>           | <b>173</b>           | <b>259</b>           | <b>10%</b>                   |
| <b>Total</b>   | <b>564</b>           | <b>499</b>           | <b>479</b>           | <b>512</b>           | <b>477</b>           | <b>(15%)</b>                 |

*NMF = No Meaningful Figure*

Table II, depicts the percentage of nighttime operations as compared to total operations for the last nine fiscal years. Night operations represent three percent (3%) for FY 02 – 03 and two percent (2%) of the total operations for FY 04, FY 05, FY 06, FY 07, FY 08, FY 09 and FY 10.

**Table II**  
**Fiscal Year Percentage of Nighttime Operations**

| Fiscal Year | Total Operations | Night Operations | % of Night Ops | % of Jet Night Ops |
|-------------|------------------|------------------|----------------|--------------------|
| 2002        | 138,790          | 3,626            | 3%             | 21%                |
| 2003        | 112,308          | 3,170            | 3%             | 23%                |
| 2004        | 136,128          | 3,361            | 2%             | 23%                |
| 2005        | 163,434          | 3,130            | 2%             | 34%*               |
| 2006        | 137,908          | 2,935            | 2%             | 38%*               |
| 2007        | 132,908          | 2,994            | 2%             | 29%*               |
| 2008        | 129,731          | 3,314            | 2%             | 24%                |
| 2009        | 112,903          | 2,407            | 2%             | 21%                |
| 2010        | 86,187           | 1,973            | 2%             | 26%                |

\* Delta began CRJ service in FY05. They had 328 nighttime operations in FY 05, 352 nighttime operations in FY 06 and 117 nighttime operations in FY 07. Without Delta's operations, the percentage of jet night operations in FY05 would have been twenty-four percent (24%) of the total nighttime operations and twenty-six percent (26%) of the total in FY 06 and twenty-five percent (25%) of the total in FY 07.

## **PART II CITIZEN COMMENTS**

Citizen noise comments are separated according to four geographical areas (Quadrants). Below is a sample representation of the neighborhoods in each Quadrant. Every neighborhood in the area is not included in this list, although it is included in the Quadrant total.

**Northeast Quadrant** - Briarwood, Coconut River Estates, Golden Gate, Grey Oaks, Hawks Ridge, Wyndemere, and surrounding northeast areas.

**Northwest Quadrant** - Bears Paw, Coconut River Estates, Coquina Sands, Country Club of Naples, Lake Forest, Lake Park, Park Shore, Ridge Lakes, River Estates, River Reach, Sun Terrace, Moorings, Wilderness, and surrounding northwest areas.

**Southwest Quadrant** - Aqualane Shores, Old Naples, Port Royal, Royal Harbor, and surrounding southwest neighborhoods.

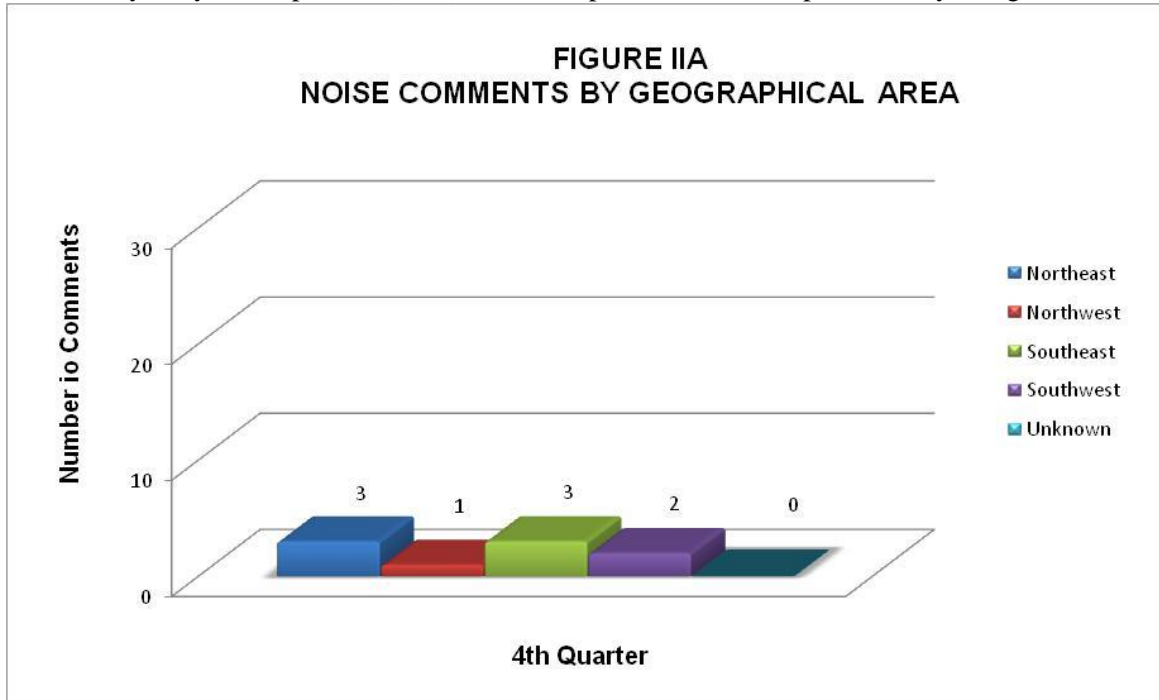
**Southeast Quadrant** - Brookside, Coconut Grove, Flamingo Estates, Foxfire, Kings Lake, Lakewood, Naples Gardens, Rock Creek Campground, The Glades, and surrounding neighborhoods.

The analysis will include the specific nature of the comment, whether it was an arriving or departing aircraft or an overflight. Comments relative to nighttime Mosquito Control operations, Air Ambulance Flights, Sheriff's Office and EMS helicopter operations are included in this report. Thanks to Mosquito Control publishing their flight operations, our noise comments have decreased.

### **This Quarter Compared to the Same Period One Year Ago**

Compared to the same period last year, the net total number of comments decreased by 8 calls, from 17 to 9 (or 47%) even though total operations have decreased by 22% and nighttime operations have decreased by 15%. Comments received from neighborhoods to the northeast of the airport have decreased by 6, from the northwest they decreased by 3, from the southeast they stayed the same, from the southwest they increased by 3, and unknown areas decreased by 2.

Figure IIA, below, graphically compares the noise comments received by geographical areas based on data collected during the Fourth Quarter of 2010. Total comments for this quarter have decreased by forty-seven percent (47%) when compared to the same period one year ago.



### PART III COMMENTS BY TIMEFRAME

Figure IIIA, below, depicts noise comments for the Fourth Quarter according to the time of the single event. The highest number of comments was received during the 3:00 PM hour. Twenty-two percent (22%) of the total comments were received during the voluntary curfew hours.

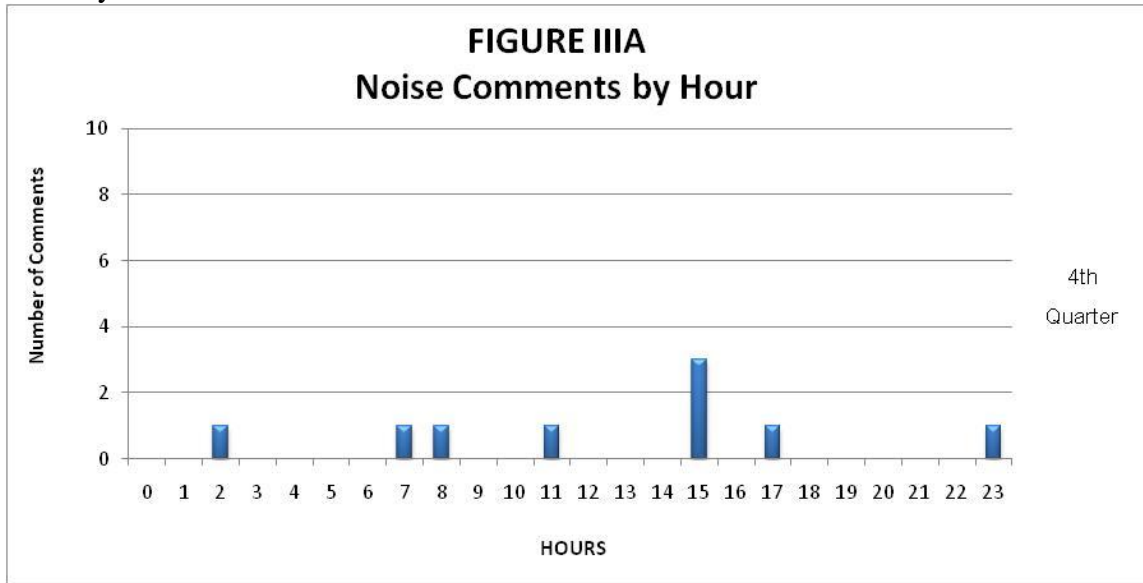
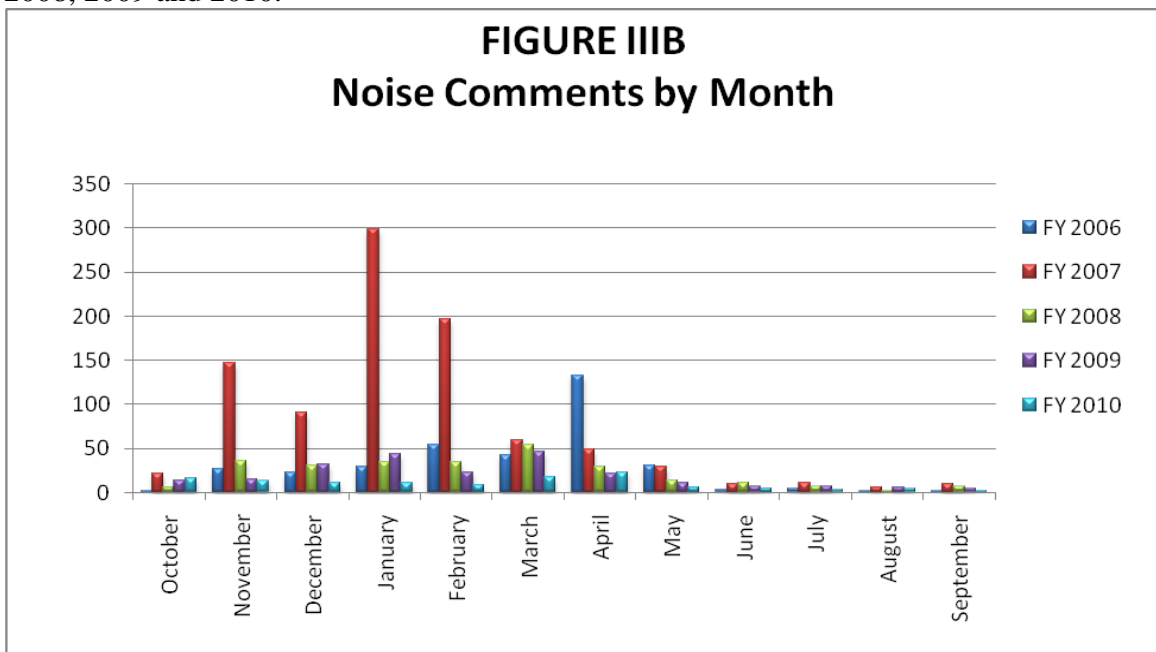


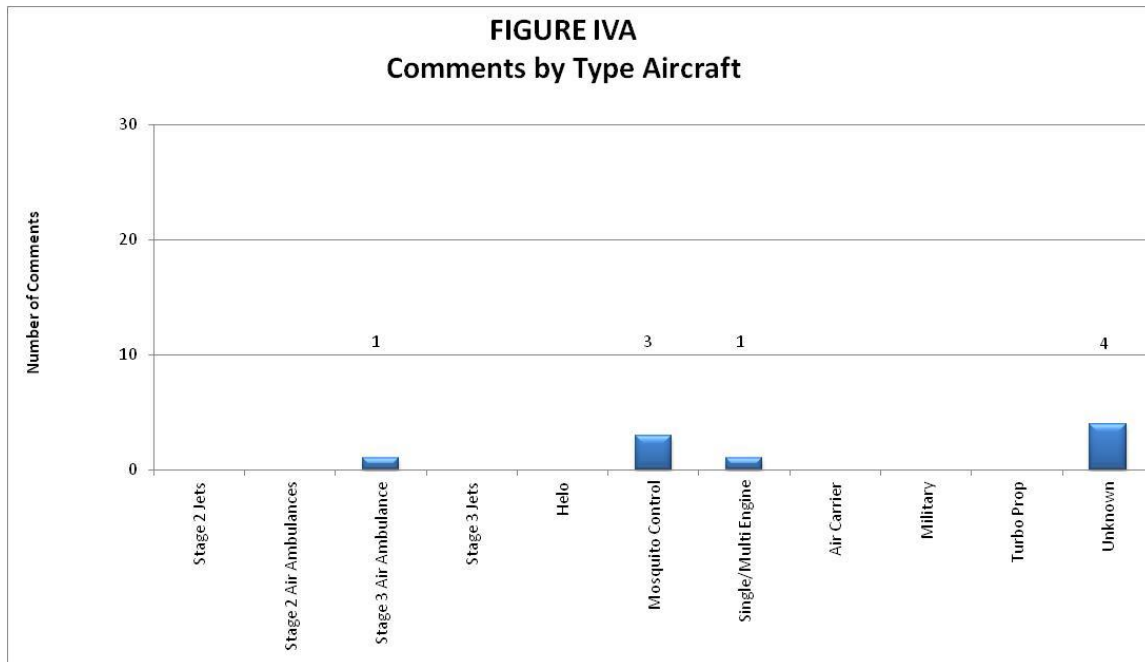
Figure IIIB below, illustrates the airport’s comment volume for fiscal years 2006, 2007, 2008, 2009 and 2010.





## PART IV COMMENTS BY OPERATIONAL SOURCE

Figure IVA below indicates which types of aircraft the callers were calling about. Forty-four percent (44%) of the comments were about unknown operations (or multiple aircraft, not one aircraft in particular), and thirty-three percent (33%) of the comments were about Mosquito Control operations.



**PART V**  
**COMMENTS BY OPERATION AND NATURE OF DISTURBANCE**

Figure V below, shows the operational source of the noise comments from the Fourth Quarter of 2010. The data indicates that arrivals account for the main operational source of comments.

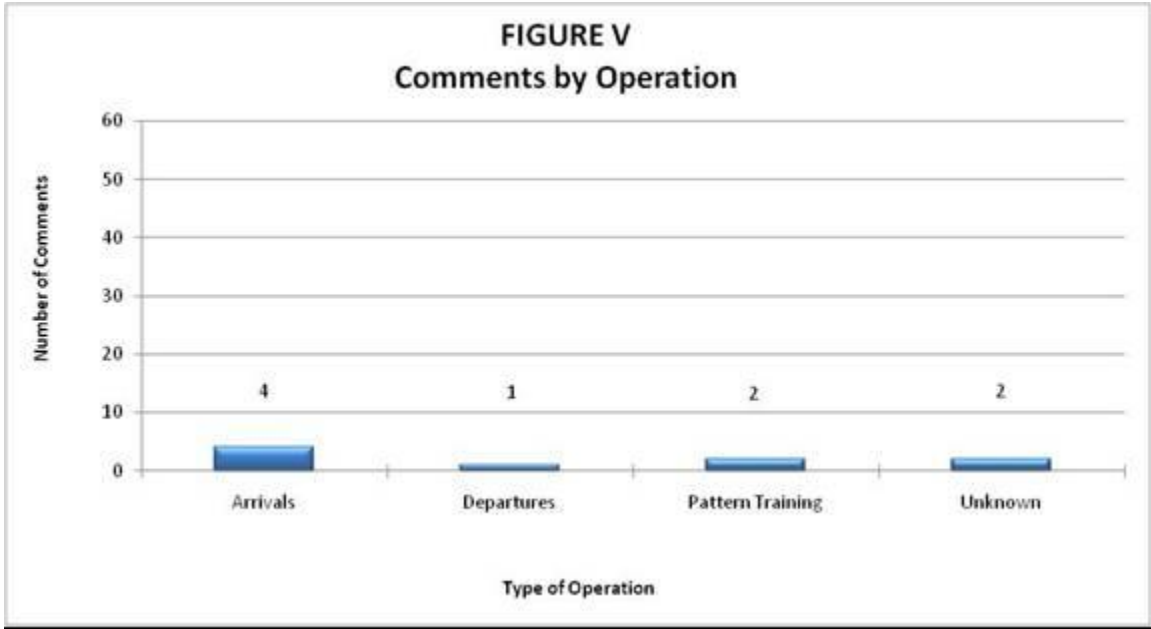
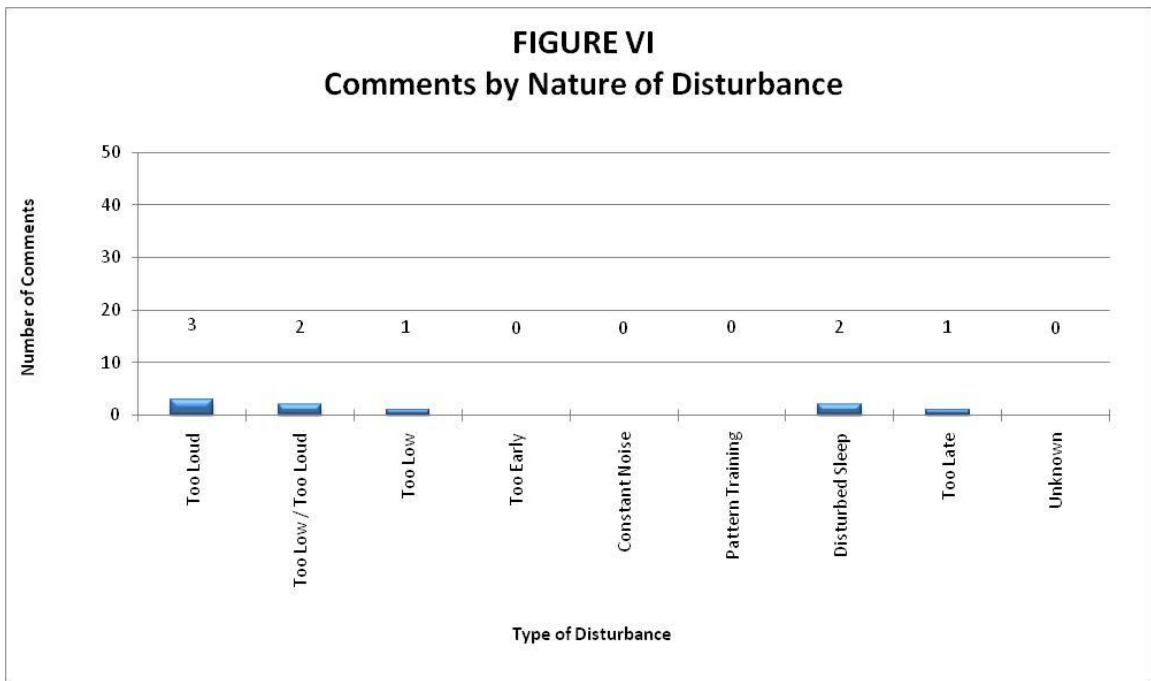
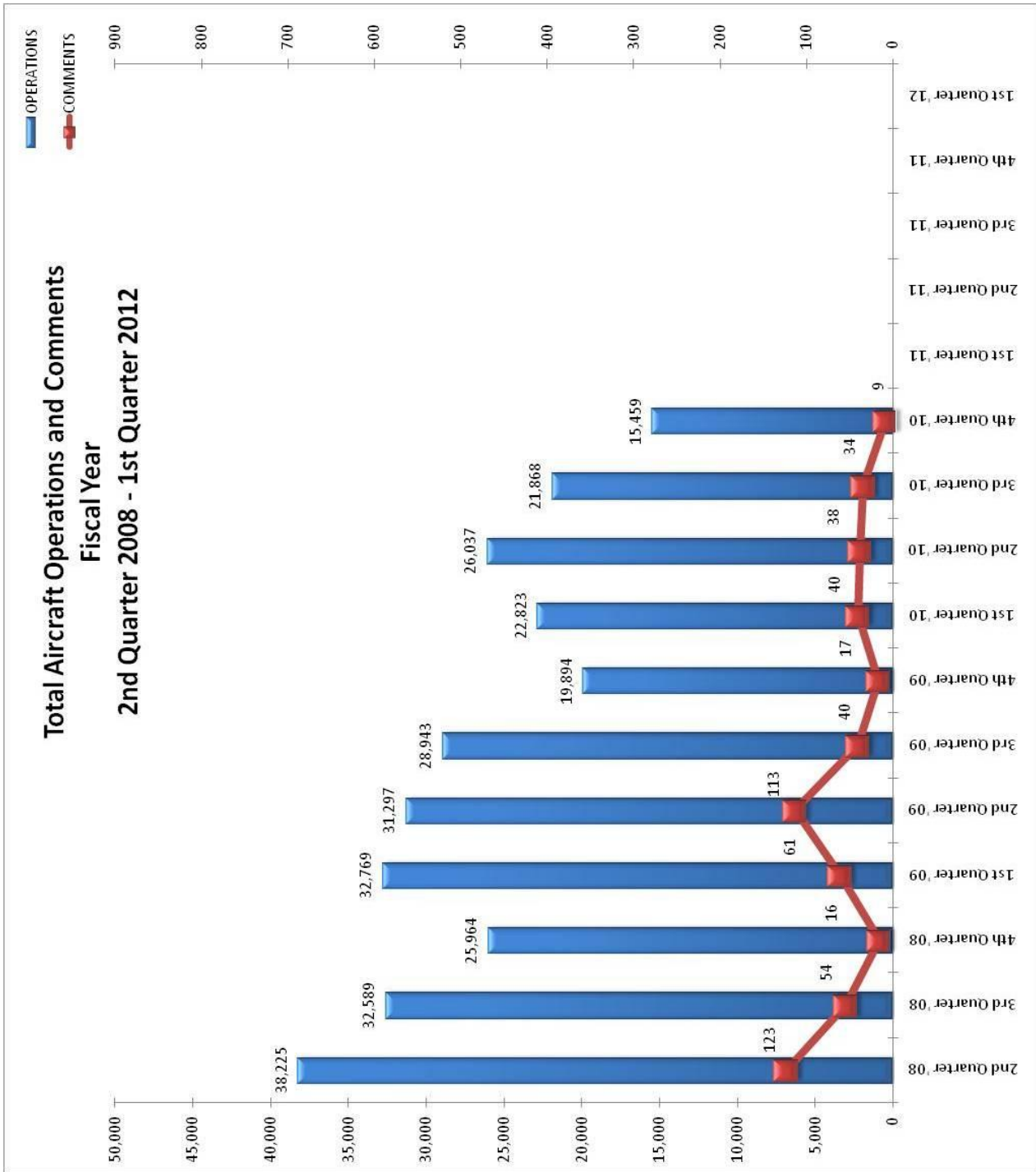


Figure VI below indicates the nature of the disturbances from callers during this quarter.





Part 150 Study Update begins - February

# NOISE COMMENTS & OPERATIONS SUMMARY

APPENDIX B

MONTH: July 2010

| DATE          | 7 AM - 10 PM  |          |              |                          |                          |                     | 10 PM - 7 AM        |                       |          |          |            |                          | TOTAL OPERATIONS |                          |                     |                     |                       |                       |                       |     |
|---------------|---------------|----------|--------------|--------------------------|--------------------------|---------------------|---------------------|-----------------------|----------|----------|------------|--------------------------|------------------|--------------------------|---------------------|---------------------|-----------------------|-----------------------|-----------------------|-----|
|               | JET+HELO+PROP |          |              | JET OPS                  |                          |                     | JET+HELO+PROP       |                       |          | JET OPS  |            |                          |                  |                          |                     |                     |                       |                       |                       |     |
|               | EVENTS        | COMMENTS | OPERATIONS   | TOTAL STAGE 1 OPERATIONS | TOTAL STAGE 2 OPERATIONS | AA STAGE 1 (EXEMPT) | AA STAGE 2 (EXEMPT) | AA STAGE 3 OPERATIONS | EVENTS   | COMMENTS | OPERATIONS | TOTAL STAGE 1 OPERATIONS |                  | TOTAL STAGE 2 OPERATIONS | AA STAGE 1 (EXEMPT) | AA STAGE 2 (EXEMPT) | AA STAGE 3 OPERATIONS | STAGE 3 GA OPERATIONS | STAGE 3 AT OPERATIONS |     |
| Thur-01       |               |          | 174          |                          |                          |                     |                     |                       |          |          | 8          |                          |                  |                          |                     |                     |                       | 1                     |                       | 182 |
| Fri-02        |               |          | 194          |                          |                          |                     |                     |                       |          |          | 5          |                          |                  |                          |                     |                     |                       |                       |                       | 199 |
| Sat-03        |               |          | 125          |                          |                          |                     |                     |                       |          |          | 7          |                          |                  |                          |                     |                     |                       | 1                     |                       | 132 |
| Sun-04        |               |          | 64           |                          |                          |                     |                     |                       |          |          | 1          |                          |                  |                          |                     |                     |                       |                       |                       | 65  |
| Mon-05        |               |          | 193          |                          |                          |                     |                     |                       |          |          | 5          |                          |                  |                          |                     |                     |                       | 2                     |                       | 198 |
| Tue-06        |               |          | 167          |                          |                          |                     |                     |                       |          |          | 3          |                          |                  |                          |                     |                     |                       |                       |                       | 170 |
| Wed-07        |               |          | 218          |                          |                          |                     |                     |                       |          |          | 4          |                          |                  |                          |                     |                     |                       |                       | 1                     | 222 |
| Thur-08       | 2             | 2        | 198          |                          |                          |                     |                     |                       |          |          | 6          |                          |                  |                          |                     |                     |                       |                       |                       | 204 |
| Fri-09        |               |          | 233          |                          |                          |                     |                     |                       |          |          | 4          |                          |                  |                          |                     |                     |                       | 1                     |                       | 237 |
| Sat-10        |               |          | 160          |                          |                          |                     |                     |                       |          |          | 6          |                          |                  |                          |                     |                     |                       |                       |                       | 166 |
| Sun-11        |               |          | 167          |                          |                          |                     |                     |                       |          |          | 15         |                          |                  |                          |                     |                     |                       | 1                     |                       | 182 |
| Mon-12        |               |          | 165          |                          |                          |                     |                     |                       |          |          | 10         |                          |                  |                          |                     |                     |                       |                       |                       | 175 |
| Tue-13        |               |          | 187          |                          |                          |                     |                     |                       |          |          | 9          |                          |                  |                          |                     |                     |                       | 3                     |                       | 196 |
| Wed-14        | 1             | 1        | 175          |                          |                          |                     |                     |                       |          |          | 4          |                          |                  |                          |                     |                     |                       |                       |                       | 179 |
| Thur-15       |               |          | 220          |                          |                          |                     |                     |                       |          |          | 5          |                          |                  |                          |                     |                     |                       |                       |                       | 225 |
| Fri-16        |               |          | 196          |                          |                          |                     |                     |                       |          |          | 5          |                          |                  |                          |                     |                     |                       |                       |                       | 201 |
| Sat-17        |               |          | 138          |                          |                          |                     |                     |                       |          |          | 4          |                          |                  |                          |                     |                     |                       |                       |                       | 142 |
| Sun-18        |               |          | 189          |                          |                          |                     |                     |                       |          |          | 3          |                          |                  |                          |                     |                     |                       |                       |                       | 192 |
| Mon-19        |               |          | 188          |                          |                          |                     |                     |                       |          |          | 4          |                          |                  |                          |                     |                     |                       |                       |                       | 192 |
| Tue-20        |               |          | 268          |                          |                          |                     |                     |                       |          |          | 2          |                          |                  |                          |                     |                     |                       |                       |                       | 270 |
| Wed-21        |               |          | 270          |                          |                          |                     |                     |                       |          |          | 4          |                          |                  |                          |                     |                     |                       | 1                     |                       | 274 |
| Thur-22       |               |          | 303          |                          |                          |                     |                     |                       |          |          | 10         |                          |                  |                          |                     |                     |                       | 1                     |                       | 313 |
| Fri-23        |               |          | 65           |                          |                          |                     |                     |                       |          |          | 5          |                          |                  |                          |                     |                     |                       |                       |                       | 70  |
| Sat-24        |               |          | 105          |                          |                          |                     |                     |                       |          |          | 9          |                          |                  |                          |                     |                     |                       |                       |                       | 114 |
| Sun-25        |               |          | 101          |                          |                          |                     |                     |                       |          |          | 4          |                          |                  |                          |                     |                     |                       |                       |                       | 105 |
| Mon-26        |               |          | 195          |                          |                          |                     |                     |                       |          |          | 7          |                          |                  |                          |                     |                     |                       |                       |                       | 202 |
| Tue-27        |               |          | 239          |                          |                          |                     |                     |                       |          |          | 5          |                          |                  |                          |                     |                     |                       |                       |                       | 244 |
| Wed-28        |               |          | 178          |                          |                          |                     |                     |                       |          |          | 2          |                          |                  |                          |                     |                     |                       |                       |                       | 180 |
| Thur-29       |               |          | 215          |                          |                          |                     |                     |                       |          |          | 5          |                          |                  |                          |                     |                     |                       |                       |                       | 220 |
| Fri-30        |               |          | 120          |                          |                          |                     |                     |                       |          |          | 13         |                          |                  |                          |                     |                     |                       |                       |                       | 133 |
| Sat-31        |               |          | 191          |                          |                          |                     |                     |                       |          |          | 6          |                          |                  |                          |                     |                     |                       |                       |                       | 197 |
| <b>TOTALS</b> | <b>3</b>      | <b>3</b> | <b>5,601</b> | <b>0</b>                 | <b>0</b>                 | <b>0</b>            | <b>1</b>            | <b>2</b>              | <b>0</b> | <b>0</b> | <b>180</b> | <b>0</b>                 | <b>0</b>         | <b>0</b>                 | <b>0</b>            | <b>0</b>            | <b>11</b>             | <b>0</b>              | <b>5,781</b>          |     |

| COMMENTS          | DAY   | NIGHT | TOTAL |
|-------------------|-------|-------|-------|
| Events            | 3     | 0     | 3     |
| Comments          | 3     | 0     | 3     |
| Operations (Ops)  | 5,601 | 180   | 5,781 |
| %Events/Ops       | 0.1%  | 0.0%  | 0.1%  |
| Comments & Events | 1.0   | 0.0   | 1.0   |
| % Comments/ Ops   | 0.1%  | 0.0%  | 0.1%  |

| NIGHT OPERATIONS         |       |     |
|--------------------------|-------|-----|
| Air Ambulance (AA)       | J     | 0   |
| EMS                      | H     | 19  |
| Sheriff's Office         | H     | 44  |
| Mosquito Control         | H     | 1   |
| Mosquito Control         | P     | 30  |
| <b>Public Service</b>    | J,H,P | 94  |
| Non-Jet Air Carrier & GA | H,P   | 75  |
| Total GA Jet Ops         | J     | 11  |
| Total AT Jet Ops         | J     | 0   |
| Total Jet Operations     | J     | 11  |
| <b>Night Ops - Total</b> | J,H,P | 180 |

| RESTRICTIONS                      | Violations | Letters |
|-----------------------------------|------------|---------|
| <b>Mandatory Restriction (MR)</b> |            |         |
| Runups: Maintenance               | 0          | 0       |
| Jet Stage 1 day & night Ops       | 0          | 0       |
| Jet Stage 2 day & night Ops       | 0          | 0       |
| <b>Voluntary Restriction (VR)</b> |            |         |
| Night Ops                         | 136        | 0       |

# NOISE COMMENTS & OPERATIONS SUMMARY

APPENDIX B

MONTH: Aug-10

| DATE          | 7 AM - 10 PM  |          |              |                          |                          |                     | 10 PM - 7 AM        |                       |          |          |            |                          | TOTAL OPERATIONS |                          |                     |                     |                       |                       |                       |              |
|---------------|---------------|----------|--------------|--------------------------|--------------------------|---------------------|---------------------|-----------------------|----------|----------|------------|--------------------------|------------------|--------------------------|---------------------|---------------------|-----------------------|-----------------------|-----------------------|--------------|
|               | JET+HELO+PROP |          |              | JET OPS                  |                          |                     | JET+HELO+PROP       |                       |          | JET OPS  |            |                          |                  |                          |                     |                     |                       |                       |                       |              |
|               | EVENTS        | COMMENTS | OPERATIONS   | TOTAL STAGE 1 OPERATIONS | TOTAL STAGE 2 OPERATIONS | AA STAGE 1 (EXEMPT) | AA STAGE 2 (EXEMPT) | AA STAGE 3 OPERATIONS | EVENTS   | COMMENTS | OPERATIONS | TOTAL STAGE 1 OPERATIONS |                  | TOTAL STAGE 2 OPERATIONS | AA STAGE 1 (EXEMPT) | AA STAGE 2 (EXEMPT) | AA STAGE 3 OPERATIONS | STAGE 3 GA OPERATIONS | STAGE 3 AT OPERATIONS |              |
| Sun-01        |               |          | 125          |                          |                          |                     |                     |                       |          |          | 5          |                          |                  |                          |                     |                     |                       | 1                     | 130                   |              |
| Mon-02        |               |          | 130          |                          |                          |                     |                     |                       |          |          | 4          |                          |                  |                          |                     |                     |                       | 1                     | 134                   |              |
| Tue-03        |               |          | 125          |                          |                          |                     |                     |                       |          |          | 3          |                          |                  |                          |                     |                     |                       |                       | 128                   |              |
| Wed-04        |               |          | 175          |                          |                          |                     |                     |                       |          |          | 5          |                          |                  |                          |                     |                     |                       |                       | 180                   |              |
| Thu-05        |               |          | 196          |                          |                          |                     |                     |                       | 1        | 1        | 13         |                          |                  |                          |                     |                     |                       | 3                     | 209                   |              |
| Fri-06        | 1             | 1        | 211          |                          |                          |                     |                     |                       |          |          | 6          |                          |                  |                          |                     |                     |                       |                       | 217                   |              |
| Sat-07        |               |          | 114          |                          |                          |                     |                     |                       | 1        | 1        | 10         |                          |                  |                          |                     |                     |                       |                       | 124                   |              |
| Sun-08        |               |          | 101          |                          |                          |                     |                     |                       |          |          | 1          |                          |                  |                          |                     |                     |                       | 1                     | 102                   |              |
| Mon-09        |               |          | 99           |                          |                          |                     |                     |                       |          |          | 4          |                          |                  |                          |                     |                     |                       |                       | 103                   |              |
| Tue-10        |               |          | 54           |                          |                          |                     |                     |                       |          |          | 1          |                          |                  |                          |                     |                     |                       |                       | 55                    |              |
| Wed-11        |               |          | 201          |                          |                          |                     |                     |                       |          |          | 2          |                          |                  |                          |                     |                     |                       | 1                     | 203                   |              |
| Thu-12        |               |          | 228          |                          |                          |                     |                     |                       |          |          | 1          |                          |                  |                          |                     |                     |                       |                       | 229                   |              |
| Fri-13        |               |          | 265          |                          |                          |                     |                     |                       |          |          | 9          |                          |                  |                          |                     |                     |                       | 2                     | 274                   |              |
| Sat-14        |               |          | 148          |                          |                          |                     |                     |                       |          |          | 8          |                          |                  |                          |                     |                     |                       | 1                     | 156                   |              |
| Sun-15        |               |          | 149          |                          |                          |                     |                     |                       |          |          | 5          |                          |                  |                          |                     |                     |                       |                       | 154                   |              |
| Mon-16        |               |          | 116          |                          |                          |                     |                     |                       |          |          | 3          |                          |                  |                          |                     |                     |                       |                       | 119                   |              |
| Tue-17        |               |          | 195          |                          |                          |                     |                     |                       |          |          | 7          |                          |                  |                          |                     |                     |                       |                       | 202                   |              |
| Wed-18        |               |          | 129          |                          |                          |                     |                     |                       |          |          |            |                          |                  |                          |                     |                     |                       |                       | 129                   |              |
| Thu-19        |               |          | 217          |                          |                          |                     |                     |                       |          |          | 11         |                          |                  |                          |                     |                     |                       |                       | 228                   |              |
| Fri-20        |               |          | 182          |                          |                          |                     |                     |                       |          |          | 5          |                          |                  |                          |                     |                     |                       |                       | 187                   |              |
| Sat-21        |               |          | 139          |                          |                          |                     |                     |                       |          |          | 2          |                          |                  |                          |                     |                     |                       |                       | 141                   |              |
| Sun-22        |               |          | 99           |                          |                          |                     |                     |                       |          |          | 1          |                          |                  |                          |                     |                     |                       |                       | 100                   |              |
| Mon-23        |               |          | 66           |                          |                          |                     |                     |                       |          |          | 4          |                          |                  |                          |                     |                     |                       | 4                     | 70                    |              |
| Tue-24        |               |          | 156          |                          |                          |                     |                     |                       |          |          | 2          |                          |                  |                          |                     |                     |                       | 1                     | 158                   |              |
| Wed-25        |               |          | 142          |                          |                          |                     |                     |                       |          |          | 5          |                          |                  |                          |                     |                     |                       | 1                     | 147                   |              |
| Thu-26        |               |          | 172          |                          |                          |                     |                     |                       |          |          | 1          |                          |                  |                          |                     |                     |                       |                       | 173                   |              |
| Fri-27        | 1             | 1        | 183          |                          |                          |                     |                     |                       |          |          | 4          |                          |                  |                          |                     |                     |                       |                       | 187                   |              |
| Sat-28        |               |          | 144          |                          |                          |                     |                     |                       |          |          | 6          |                          |                  |                          |                     |                     |                       |                       | 150                   |              |
| Sun-29        |               |          | 92           |                          |                          |                     |                     |                       |          |          | 2          |                          |                  |                          |                     |                     |                       |                       | 94                    |              |
| Mon-30        |               |          | 110          |                          |                          |                     |                     |                       |          |          | 7          |                          |                  |                          |                     |                     |                       |                       | 117                   |              |
| Tue-31        |               |          | 199          |                          |                          |                     |                     |                       |          |          | 5          |                          |                  |                          |                     |                     |                       |                       | 204                   |              |
| <b>TOTALS</b> | <b>2</b>      | <b>2</b> | <b>4,662</b> | <b>0</b>                 | <b>0</b>                 | <b>0</b>            | <b>2</b>            | <b>1</b>              | <b>2</b> | <b>2</b> | <b>142</b> | <b>0</b>                 | <b>0</b>         | <b>0</b>                 | <b>0</b>            | <b>0</b>            | <b>0</b>              | <b>15</b>             | <b>0</b>              | <b>4,804</b> |

| COMMENTS          | DAY   | NIGHT | TOTAL |
|-------------------|-------|-------|-------|
| Events            | 2     | 2     | 4     |
| Comments          | 2     | 2     | 4     |
| Operations (Ops)  | 4,662 | 142   | 4,804 |
| %Events/Ops       | 0.0%  | 14%   | 0.1%  |
|                   |       |       |       |
| Comments & Events | 10    | 10    | 10    |
|                   |       |       |       |
| %Comments/Ops     | 0.0%  | 14%   | 0.1%  |

| NIGHT OPERATIONS         |       |            |
|--------------------------|-------|------------|
| Air Ambulance (AA)       | J     | 0          |
| EVS                      | H     | 13         |
| Sheriff's Office         | H     | 37         |
| Mosquito Control         | H     | 2          |
| Mosquito Control         | P     | 34         |
| <b>Public Service</b>    | J,H,P | <b>86</b>  |
|                          |       |            |
| Non-Jet Air Carrier & GA | H,P   | 41         |
| Total GA Jet Ops         | J     | 15         |
| Total AT Jet Ops         | J     | 0          |
| Total Jet Operations     | J     | 15         |
| <b>Night Ops - Total</b> | J,H,P | <b>142</b> |

| RESTRICTIONS                      | Violations | Letters |
|-----------------------------------|------------|---------|
| <b>Mandatory Restriction (MR)</b> |            |         |
| Runups: Maintenance               | 0          | 0       |
| Jet Stage 1 day & night Ops       | 0          | 0       |
| Jet Stage 2 day & night Ops       | 0          | 0       |
|                                   |            |         |
| <b>Voluntary Restriction (VR)</b> |            |         |
|                                   |            |         |
| Night Ops                         | 142        | 9       |

# NOISE COMMENTS & OPERATIONS SUMMARY

APPENDIX B

MONTH: Sep-10

| DATE    | 7 AM - 10 PM  |          |            |                          |                          |                     |                     |                       | 10 PM - 7 AM  |          |            |                          |                          |                     |                     |                       | TOTAL OPERATIONS |                       |                       |
|---------|---------------|----------|------------|--------------------------|--------------------------|---------------------|---------------------|-----------------------|---------------|----------|------------|--------------------------|--------------------------|---------------------|---------------------|-----------------------|------------------|-----------------------|-----------------------|
|         | JET+HELO+PROP |          |            | JET OPS                  |                          |                     |                     |                       | JET+HELO+PROP |          |            | JET OPS                  |                          |                     |                     |                       |                  |                       |                       |
|         | EVENTS        | COMMENTS | OPERATIONS | TOTAL STAGE 1 OPERATIONS | TOTAL STAGE 2 OPERATIONS | AA STAGE 1 (EXEMPT) | AA STAGE 2 (EXEMPT) | AA STAGE 3 OPERATIONS | EVENTS        | COMMENTS | OPERATIONS | TOTAL STAGE 1 OPERATIONS | TOTAL STAGE 2 OPERATIONS | AA STAGE 1 (EXEMPT) | AA STAGE 2 (EXEMPT) | AA STAGE 3 OPERATIONS |                  | STAGE 3 GA OPERATIONS | STAGE 3 AT OPERATIONS |
| Wed-01  |               |          | 135        |                          |                          |                     |                     |                       |               |          | 5          |                          |                          |                     |                     |                       | 3                |                       | 140                   |
| Thur-02 | 1             | 1        | 170        |                          |                          |                     |                     |                       |               |          | 5          |                          |                          |                     |                     |                       |                  |                       | 175                   |
| Fri-03  |               |          | 187        |                          |                          |                     |                     |                       |               |          | 9          |                          |                          |                     |                     |                       | 2                |                       | 196                   |
| Sat-04  |               |          | 118        |                          |                          |                     |                     |                       |               |          | 4          |                          |                          |                     |                     |                       |                  | 1                     | 122                   |
| Sun-05  |               |          | 73         |                          |                          |                     |                     |                       |               |          | 3          |                          |                          |                     |                     |                       | 1                |                       | 76                    |
| Mon-06  |               |          | 91         |                          |                          |                     |                     |                       |               |          | 2          |                          |                          |                     |                     |                       |                  |                       | 93                    |
| Tue-07  |               |          | 157        |                          |                          |                     |                     |                       |               |          | 1          |                          |                          |                     |                     |                       |                  |                       | 158                   |
| Wed-08  |               |          | 153        |                          |                          |                     |                     |                       |               |          | 4          |                          |                          |                     |                     |                       |                  |                       | 157                   |
| Thur-09 |               |          | 185        |                          |                          |                     |                     |                       |               |          | 5          |                          |                          |                     |                     |                       | 1                |                       | 190                   |
| Fri-10  |               |          | 113        |                          |                          |                     |                     |                       |               |          | 8          |                          |                          |                     |                     |                       | 1                |                       | 121                   |
| Sat-11  |               |          | 99         |                          |                          |                     |                     |                       |               |          | 4          |                          |                          |                     |                     |                       |                  |                       | 103                   |
| Sun-12  |               |          | 129        |                          |                          |                     |                     |                       |               |          | 3          |                          |                          |                     |                     |                       |                  |                       | 132                   |
| Mon-13  |               |          | 162        |                          |                          |                     |                     |                       |               |          | 5          |                          |                          |                     |                     |                       |                  |                       | 167                   |
| Tue-14  |               |          | 189        |                          |                          |                     |                     |                       |               |          | 8          |                          |                          |                     |                     |                       |                  |                       | 197                   |
| Wed-15  |               |          | 206        |                          |                          |                     |                     |                       |               |          | 7          |                          |                          |                     |                     |                       |                  |                       | 213                   |
| Thur-16 |               |          | 221        |                          |                          |                     |                     |                       |               |          | 6          |                          |                          |                     |                     |                       |                  |                       | 227                   |
| Fri-17  |               |          | 259        |                          |                          |                     |                     |                       |               |          | 8          |                          |                          |                     |                     |                       | 1                |                       | 267                   |
| Sat-18  |               |          | 126        |                          |                          |                     |                     |                       | 1             | 1        | 3          |                          |                          |                     |                     |                       |                  |                       | 129                   |
| Sun-19  |               |          | 178        |                          |                          |                     |                     |                       |               |          | 5          |                          |                          |                     |                     |                       |                  |                       | 183                   |
| Mon-20  |               |          | 153        |                          |                          |                     |                     |                       |               |          | 3          |                          |                          |                     |                     |                       | 3                |                       | 156                   |
| Tue-21  |               |          | 155        |                          |                          |                     |                     |                       |               |          | 8          |                          |                          |                     |                     |                       | 2                |                       | 163                   |
| Wed-22  |               |          | 200        |                          |                          |                     |                     |                       |               |          | 8          |                          |                          |                     |                     |                       |                  |                       | 208                   |
| Thu-23  |               |          | 183        |                          |                          |                     |                     |                       |               |          | 7          |                          |                          |                     |                     |                       | 1                |                       | 190                   |
| Fri-24  |               |          | 188        |                          |                          |                     |                     |                       |               |          | 5          |                          |                          |                     |                     |                       | 2                |                       | 193                   |
| Sat-25  |               |          | 164        |                          |                          |                     |                     |                       |               |          | 8          |                          |                          |                     |                     |                       | 1                |                       | 172                   |
| Sun-26  |               |          | 160        |                          |                          |                     |                     |                       |               |          | 1          |                          |                          |                     |                     |                       |                  |                       | 161                   |
| Mon-27  |               |          | 194        |                          |                          |                     |                     |                       |               |          | 11         |                          |                          |                     |                     |                       | 1                |                       | 205                   |
| Tue-28  |               |          | 142        |                          |                          |                     |                     |                       |               |          | 5          |                          |                          |                     |                     |                       |                  |                       | 147                   |
| Wed-29  |               |          | 44         |                          |                          |                     |                     |                       |               |          | 0          |                          |                          |                     |                     |                       |                  |                       | 44                    |
| Thu-30  |               |          | 185        |                          |                          |                     |                     |                       |               |          | 4          |                          |                          |                     |                     |                       | 2                |                       | 189                   |
| TOTALS  | 1             | 1        | 4,719      | 0                        | 0                        | 0                   | 0                   | 1                     | 1             | 1        | 155        | 0                        | 0                        | 0                   | 0                   | 0                     | 21               | 0                     | 4,874                 |

| COMMENTS          | DAY   | NIGHT | TOTAL |
|-------------------|-------|-------|-------|
| Events            | 1     | 1     | 2     |
| Comments          | 1     | 1     | 2     |
| Operations (Ops)  | 4,719 | 155   | 4,874 |
| %Events/Ops       | 0.0%  | 0.6%  | 0.0%  |
| Comments & Events | 1.0   | 1.0   | 1.0   |
| %Comments/ Ops    | 0.0%  | 0.6%  | 0.0%  |

| NIGHT OPERATIONS         |       |     |
|--------------------------|-------|-----|
| Air Ambulance (AA)       | J     | 0   |
| EMS                      | H     | 11  |
| Sheriff's Office         | H     | 35  |
| Mosquito Control         | H     | 0   |
| Mosquito Control         | P     | 32  |
| <b>Public Service</b>    | J,H,P | 78  |
| Non-Jet Air Carrier & GA | H,P   | 56  |
| Total GA Jet Ops         | J     | 21  |
| Total AT Jet Ops         | J     | 0   |
| Total Jet Operations     | J     | 21  |
| <b>Night Ops - Total</b> | J,H,P | 155 |

| RESTRICTIONS                      | Violations | Letters |
|-----------------------------------|------------|---------|
| <b>Mandatory Restriction (MR)</b> |            |         |
| Runups: Maintenance               | 0          | 0       |
| Jet Stage 1 day & night Ops       | 0          | 0       |
| Jet Stage 2 day & night Ops       | 0          | 0       |
| <b>Voluntary Restriction (VR)</b> |            |         |
| Night Ops                         | 155        | 17      |