



CITY OF NAPLES AIRPORT AUTHORITY

QUARTERLY NOISE REPORT

NUMBER 58

For the period

April 1, 2011 through June 30, 2011

Prepared by the
Noise Abatement Office

TABLE OF CONTENTS

	Page
INTRODUCTION	1
PART I AIRCRAFT OPERATIONS	1
Figure IA	Total Monthly Operations 1
Figure IB	Total Night Operations by Month 2
Table I	Quarterly Air Traffic Nighttime Operations Summary 3
Table II	Fiscal Year Percentage of Nighttime Operations 3
PART II CITIZEN COMMENTS	4
Figure IIA	Noise Comments by Geographical Area 5
PART III COMMENTS BY TIMEFRAME	6
Figure IIIA	Noise Comments by Hour 6
Figure IIIB	Noise Comments by Month 6
PART IV COMMENTS BY OPERATIONAL SOURCE	7
Figure IVA	Comments by Type Aircraft 7
PART V COMMENTS BY OPERATION AND NATURE OF DISTURBANCE	8
Figure V	Comments by Operations 8
Figure VI	Comments by Nature of Disturbance 8
Appendix A	Total Aircraft Operations and Comments
Appendix B	Noise Comment / Operations Summary (Apr, May, Jun)

**PART I
AIRCRAFT OPERATIONS**

INTRODUCTION

This is the fifty-eighth Quarterly Noise Report prepared by the City of Naples Airport Authority - Noise Abatement Office. This report is informational in nature. The information contained in this report is for the Third Quarter of fiscal year 2011 (April through June). All percentages are rounded to the nearest percent.

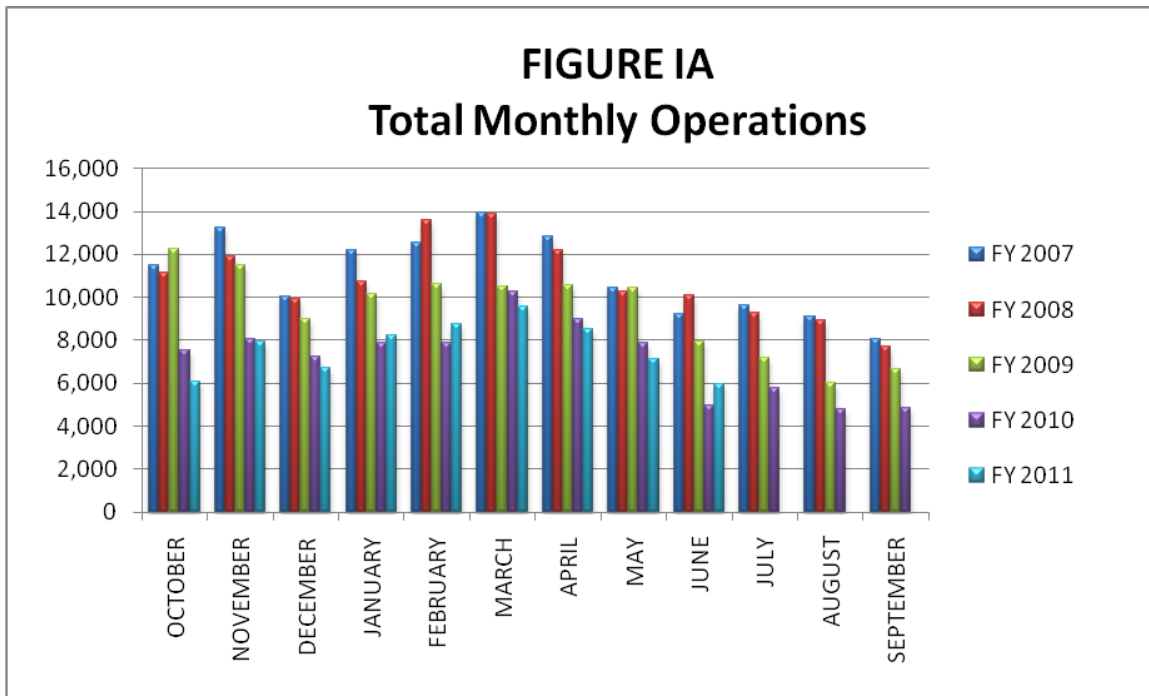
AIRCRAFT OPERATIONS

Figure 1A below contains aircraft movement data from FAA Form 7230-1 and after hour statistics recorded by the City of Naples Airport Authority Security Officers. Naples Air Traffic Control Tower is operational from 6:00 AM through 10:00 PM. A single movement represents either one arrival or one departure by the indicated aircraft.

This Quarter Compared to the Same Period One Year Ago

Compared to the same period last year, air carrier traffic (non-scheduled operators) has increased by 8% and general aviation air traffic has decreased by (2%). Total air traffic operations decreased by (1%) from 21,868 operations to 21,658.

Figure 1A below illustrates the airport's month-by-month total operational levels for fiscal years 2007, 2008, 2009, 2010 and 2011.



Night Time Operations

Figure IB, below, illustrates the airport's monthly nighttime (10:00 PM – 7:00 AM) operational levels for fiscal year 2007, 2008, 2009, 2010 and 2011.

Total nighttime operations have increased by 9% in the Third Quarter of 2011 when compared to the Third Quarter 2010 statistics. Jet operations occurring at night increased by 47 operations, or 44%, and single and multi-engine aircraft operations decreased by 7 operations, or (3%).

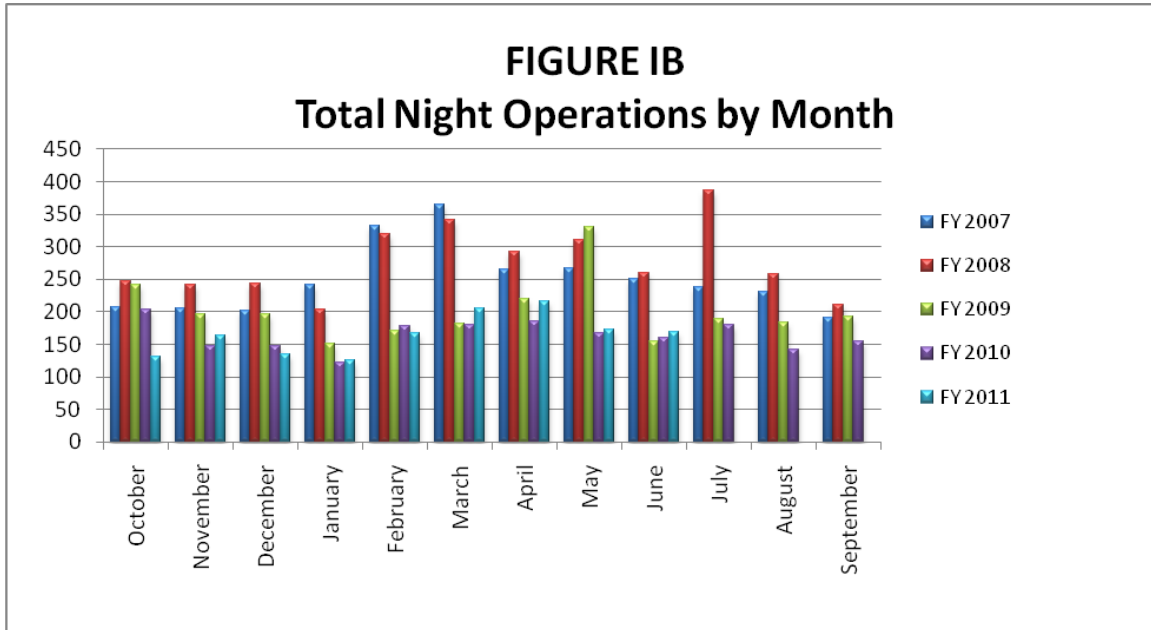


Table I, below, summarizes the types of nighttime operations occurring at the airport during the previous five quarters. Nighttime operations include voluntary curfew hours (10:00 PM through 7:00 AM). Public Service operations represent 32% of the activity occurring at night and nighttime operations accounted for two percent (2%) of the overall operations for the Third Quarter of 2011.

Table I
Quarterly Air Traffic Nighttime Operations Summary – by Fiscal Year

Activity	3rd 2010	4th 2010	1st 2011	2nd 2011	3rd 2011	3rd Quarter 2011 vs. 2010
Jets						
Air Ambulance	2	0	8	7	3	50%
Air Carrier	0	0	0	0	0	NMF
GA	104	48	152	169	150	44%
Subtotal Jets	106	47	160	176	153	44%
Single & Multi-engine (includes air carrier & GA)	233	171	137	169	226	(3%)
Public Service						
Mosquito Control Ops	9	99	16	0	22	144%
Collier Sheriff's Office	120	116	89	89	111	(8%)
EMS	42	43	28	25	46	10%
Coast Guard	2	1	2	0	0	NMF
Subtotal Public Service	173	259	135	114	179	4%
Total	512	477	432	459	558	9%

NMF = No Meaningful Figure

Table II, depicts the percentage of nighttime operations as compared to total operations for the last nine fiscal years. Night operations represent three percent (3%) for FY 02 – 03 and two percent (2%) of the total operations for FY 04, FY 05, FY 06, FY 07, FY 08, FY 09, FY 10 and FY 11.

Table II
Fiscal Year Percentage of Nighttime Operations

Fiscal Year	Total Operations	Night Operations	% of Night Ops	% of Jet Night Ops
2002	138,790	3,626	3%	21%
2003	112,308	3,170	3%	23%
2004	136,128	3,361	2%	23%
2005	163,434	3,130	2%	34%*
2006	137,908	2,935	2%	38%*
2007	132,908	2,994	2%	29%*
2008	129,731	3,314	2%	24%
2009	112,903	2,407	2%	21%
2010	86,187	1,973	2%	26%
2011 to date	68,998	1,487	2%	44%

* Delta began CRJ service in FY05. They had 328 nighttime operations in FY 05, 352 nighttime operations in FY 06 and 117 nighttime operations in FY 07. Without Delta's operations, the percentage of jet night operations in FY05 would have been twenty-four percent (24%) of the total nighttime operations and twenty-six percent (26%) of the total in FY 06 and twenty-five percent (25%) of the total in FY 07.

PART II CITIZEN COMMENTS

Citizen noise comments are separated according to four geographical areas (Quadrants). Below is a sample representation of the neighborhoods in each Quadrant. Every neighborhood in the area is not included in this list, although it is included in the Quadrant total.

Northeast Quadrant - Briarwood, Golden Gate, Grey Oaks, Hawks Ridge, Wyndemere, and surrounding northeast areas.

Northwest Quadrant - Bears Paw, Coconut River Estates, Coquina Sands, Country Club of Naples, Lake Forest, Lake Park, Park Shore, Ridge Lakes, River Estates, River Reach, Sun Terrace, Moorings, Wilderness, and surrounding northwest areas.

Southwest Quadrant - Aqualane Shores, Old Naples, Port Royal, Royal Harbor, and surrounding southwest neighborhoods.

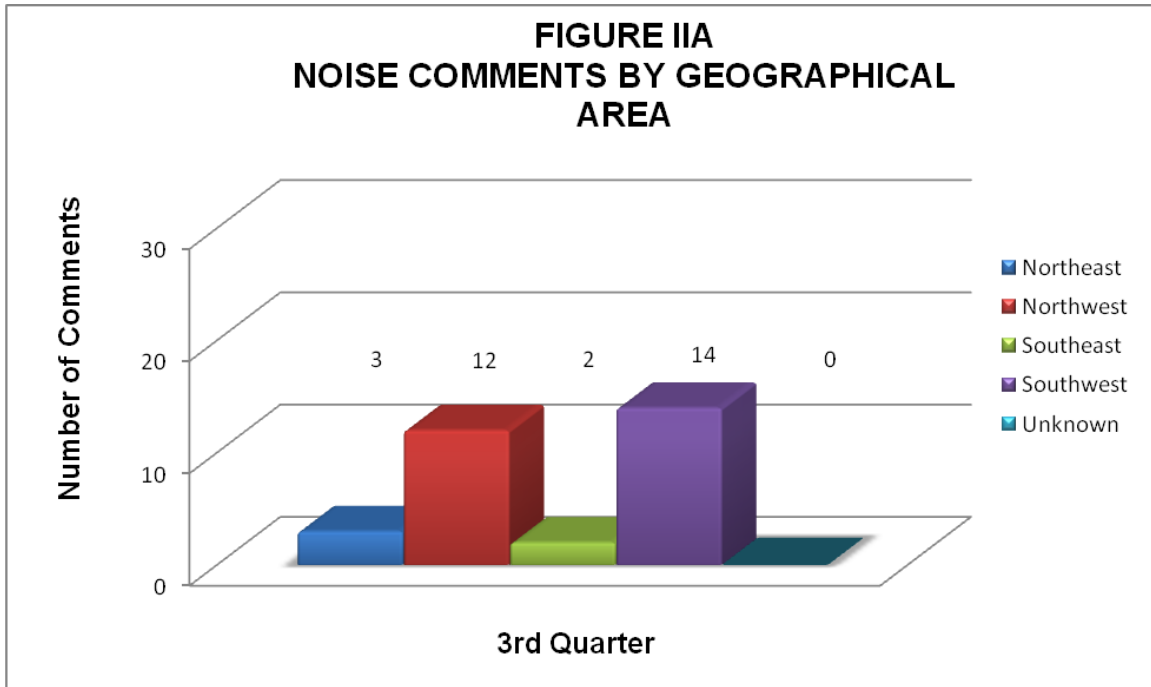
Southeast Quadrant - Brookside, Coconut Grove, Flamingo Estates, Foxfire, Kings Lake, Lakewood, Naples Gardens, Rock Creek Campground, The Glades, and surrounding neighborhoods.

The analysis will include the specific nature of the comment, whether it was an arriving or departing aircraft or an overflight. Comments relative to nighttime Mosquito Control operations, Air Ambulance Flights, Sheriff's Office and EMS helicopter operations are included in this report. Thanks to Mosquito Control publishing their flight operations, our noise comments have decreased.

This Quarter Compared to the Same Period One Year Ago

Compared to the same period last year, the net total number of comments decreased by 3 calls, from 34 to 31, total operations have decreased by 1% and nighttime operations have increased by 9%. Comments received from neighborhoods to the northeast of the airport have decreased by 3, from the northwest they increased by 11, from the southeast they remained the same, from the southwest they decreased by 8.

Figure IIA, below, graphically compares the noise comments received by geographical areas based on data collected during the Third Quarter of 2011. When compared to the same period one year ago, total comments for this quarter have decreased by 3 comments, from 34 in 2010 to 31 in 2011.



PART III COMMENTS BY TIMEFRAME

Figure IIIA, below, depicts noise comments for the Third Quarter according to the time of the single event. The highest number of comments were received during the 6:00 AM hour. Thirty-five percent (35%) of the total comments were received during the voluntary curfew hours.

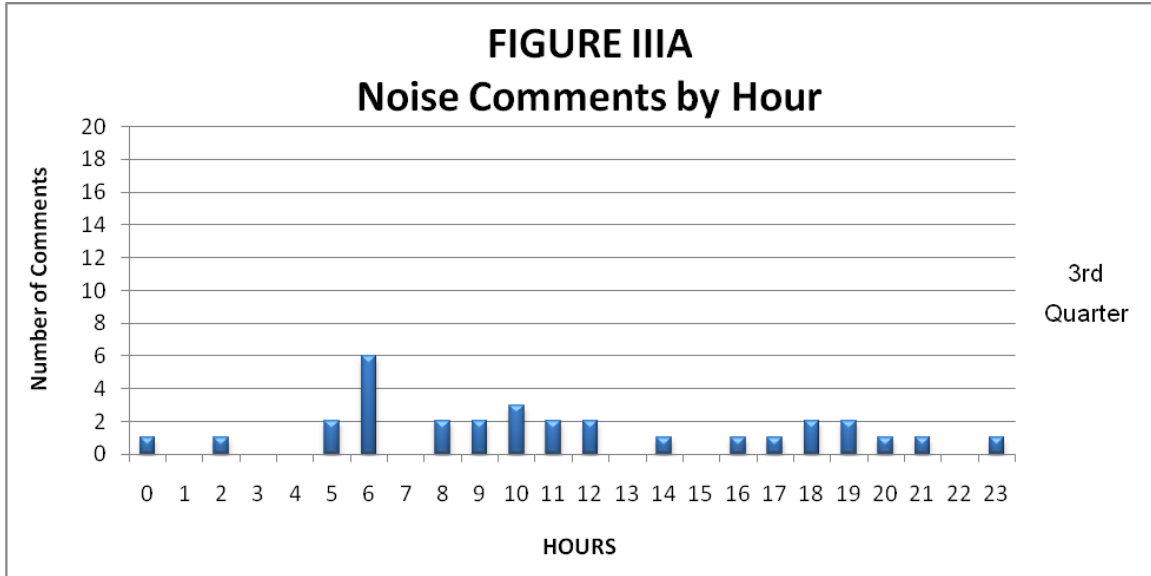
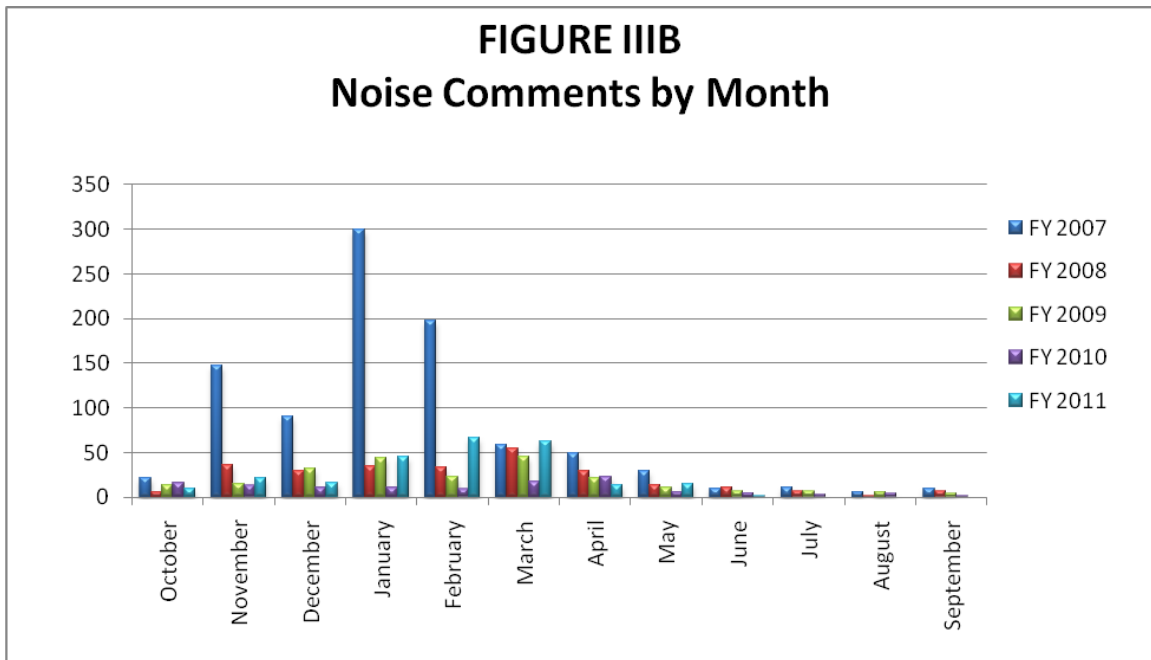
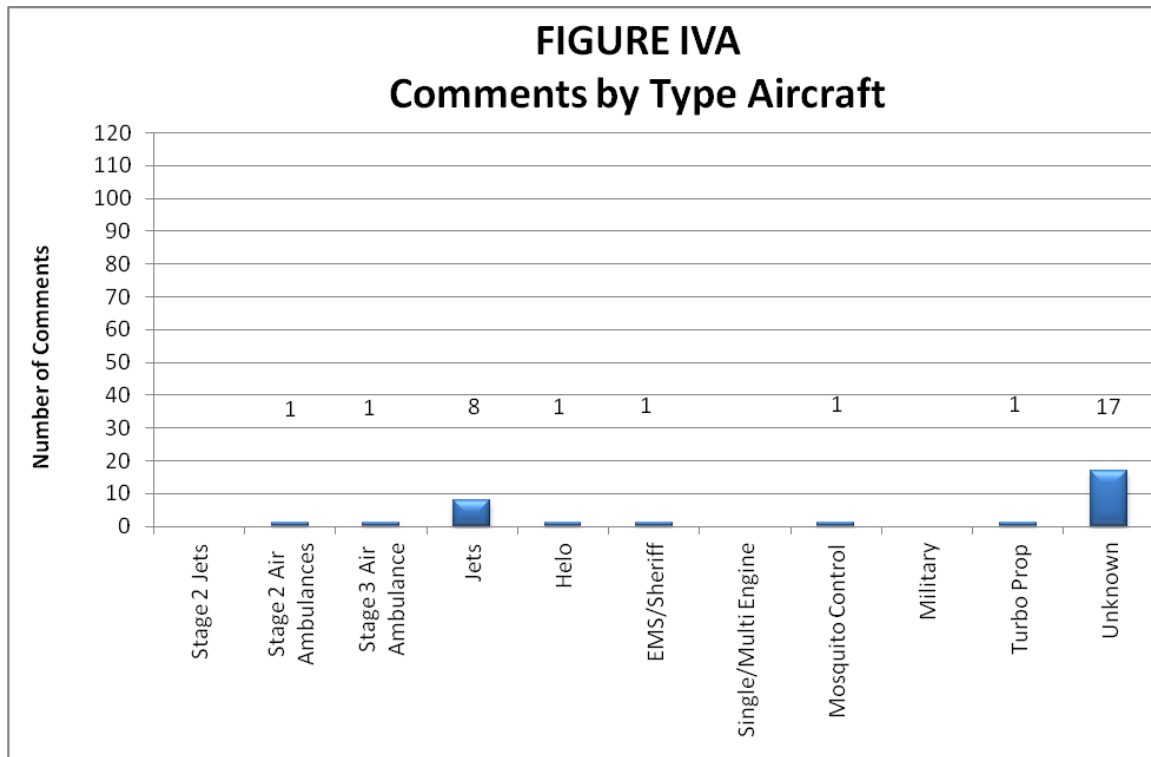


Figure IIIB below, illustrates the airport’s comment volume for fiscal years 2007, 2008, 2009, 2010 and 2011.



PART IV COMMENTS BY OPERATIONAL SOURCE

Figure IVA below indicates which types of aircraft the callers were calling about. Fifty-five percent (55%) of the comments were about unknown operations (or multiple aircraft, not one aircraft in particular).



PART V
COMMENTS BY OPERATION AND NATURE OF DISTURBANCE

Figure V below, shows the operational source of the noise comments from the Third Quarter of 2011. The data indicates that arrivals account for the main operational source of comments.

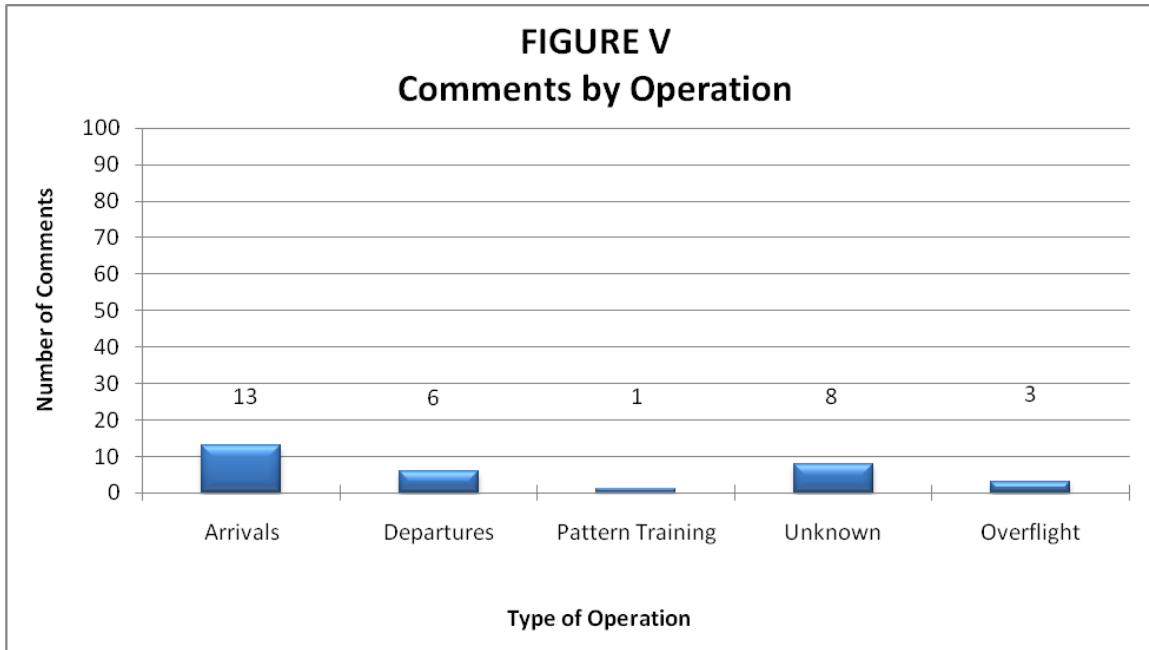
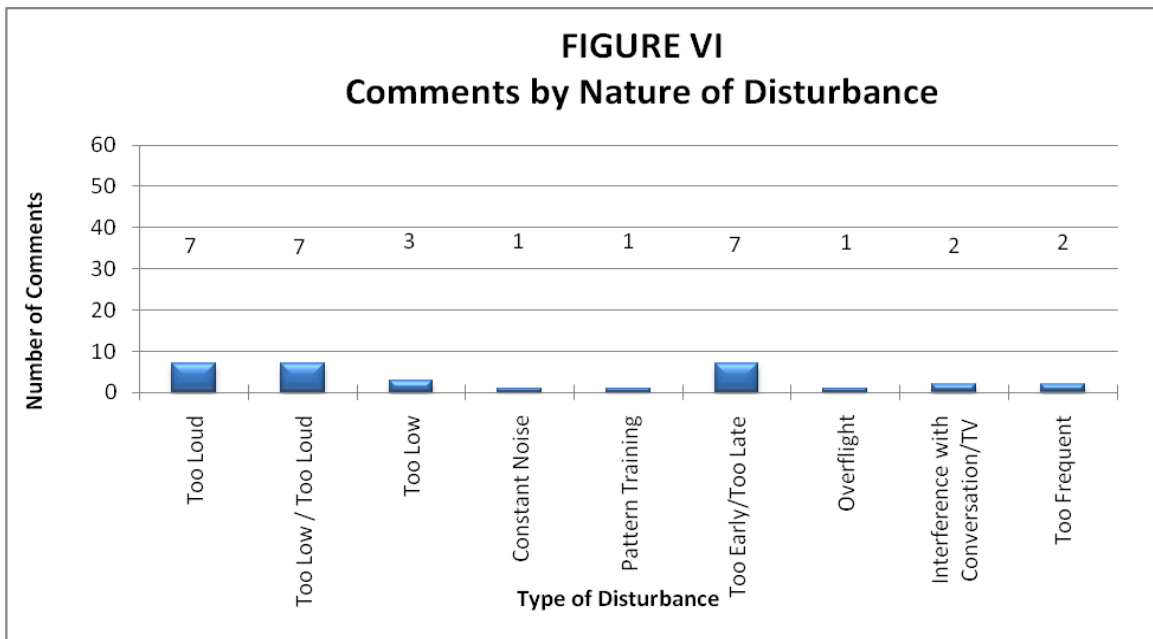
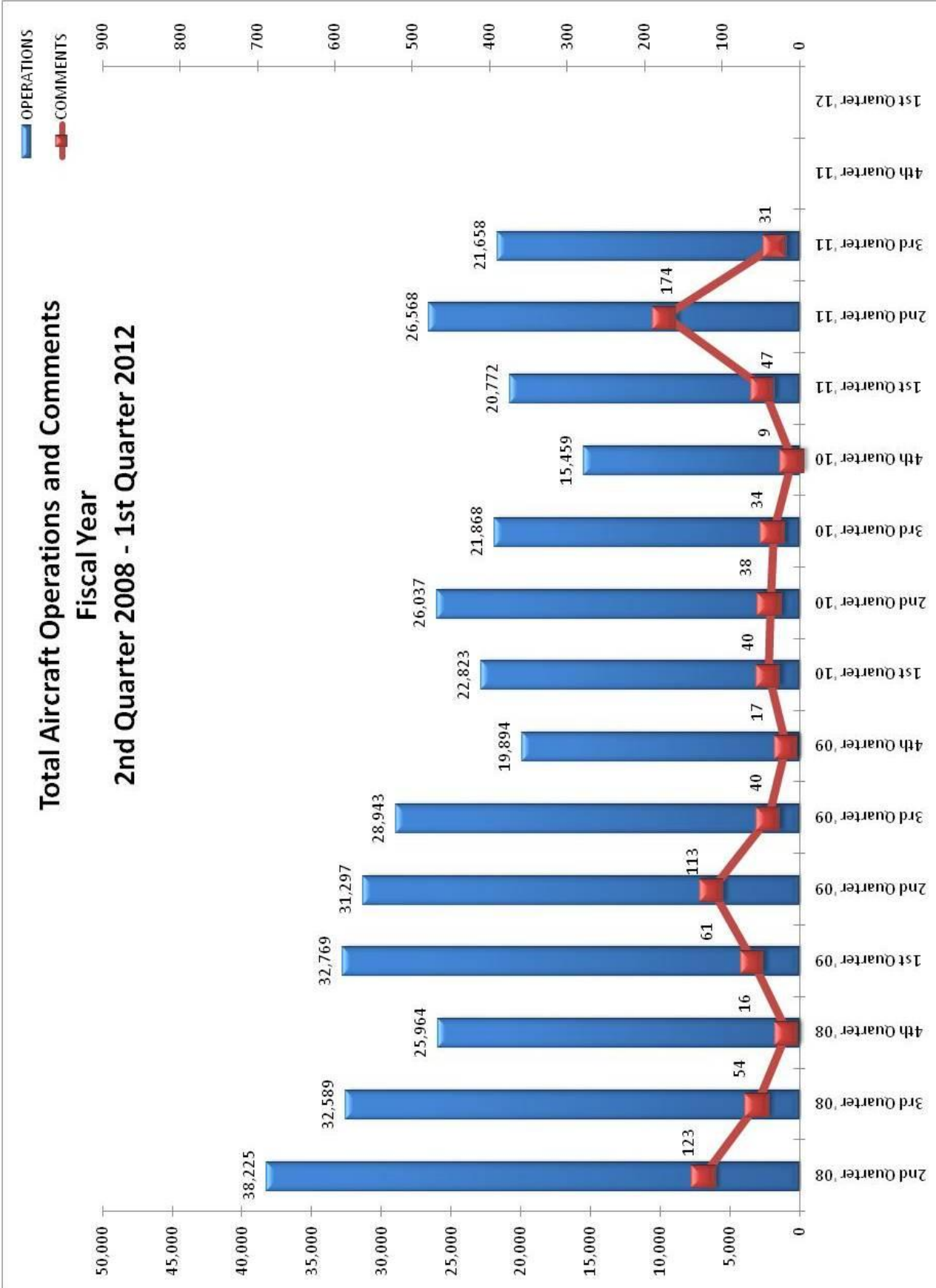


Figure VI below indicates the nature of the disturbances from callers during this quarter.





NOISE COMMENTS & OPERATIONS SUMMARY

APPENDIX C

MONTH: April-11

DATE	7 AM - 10 PM							10 PM - 7 AM							TOTAL OPERATIONS				
	JET+HELO+PROP			JET OPS				JET+HELO+PROP			JET OPS								
	EVENTS	COMMENTS	OPERATIONS	TOTAL STAGE 1 OPERATIONS	TOTAL STAGE 2 OPERATIONS	AA STAGE 1 (EXEMPT)	AA STAGE 2 (EXEMPT)	AA STAGE 3 OPERATIONS	EVENTS	COMMENTS	OPERATIONS	TOTAL STAGE 1 OPERATIONS	TOTAL STAGE 2 OPERATIONS	AA STAGE 1 (EXEMPT)		AA STAGE 2 (EXEMPT)	AA STAGE 3 OPERATIONS	STAGE 3 GA OPERATIONS	STAGE 3 AT OPERATIONS
Fri-01	1	1	317								9							7	326
Sat-02			280								6							1	286
Sun-03	1	1	286						1	1	4							2	290
Mon-04			252								4							2	256
Tues-05			166								6							3	172
Wed-06			305						2	2	4							2	309
Thur-07			320								9							4	329
Fri-08			311								8								319
Sat-09			297								12							1	309
Sun-10			238								4							1	242
Mon-11			249								9							2	258
Tues-12			324								6							3	330
Wed-13	1	1	283								4								287
Thur-14			291								15							3	306
Fri-15			315						2	3	9							1	324
Sat-16			248								5							1	253
Sun-17	1	1	233								5							1	238
Mon-18			202								9							3	211
Tues-19			210								10							5	220
Wed-20			307								6							4	313
Thur-21	1	1	369								14							8	383
Fri-22			382						1	1	10							3	392
Sat-23			263								8							1	271
Sun-24			171								8							3	179
Mon-25			369						1	1	4							2	373
Tues-26			295								4							2	299
Wed-27			246								0								246
Thur-28			318								6							4	324
Fri-29			229								10								239
Sat-30	1	1	260								8								268
TOTALS	6	6	8,336	0	0	0	0	0	7	8	216	0	0	0	0	0	0	69	8,552

COMMENTS	DAY	NIGHT	TOTAL
Events	6	7	13
Comments	6	8	14
Operations (Ops)	8,336	216	8,552
%Events/Ops	0.1%	3.2%	0.2%
Comments & Events	10	0.9	0.9
%Comments/Ops	0.1%	3.7%	0.2%

NIGHT OPERATIONS	
Air Ambulance (AA)	J 2
EMS	H 24
Sheriff's Office	H 43
Mosquito Control	H 0
Mosquito Control	P 0
Military	H 0
Public Service	J,H,P 69
Non-Jet Air Carrier & GA	HP 78
Total GA Jet Ops	J 69
Total AT Jet Ops	J 0
Total Jet Operations	J 69
Night Ops - Total	J,H,P 216

RESTRICTIONS	Violations	Letters
Mandatory Restriction (MR)		
Runups: Maintenance	0	0
Jet Stage 1 day & night Ops	0	0
Jet Stage 2 day & night Ops	0	0
Voluntary Restriction (VR)		
Jet Stage 3 night Ops	172	73

NOISE COMMENTS & OPERATIONS SUMMARY

APPENDIX B

MONTH: May 2011

DATE	7 AM - 10 PM							10 PM - 7 AM							TOTAL OPERATIONS				
	JET+HELO+PROP			JET OPS				JET+HELO+PROP			JET OPS								
	EVENTS	COMMENTS	OPERATIONS	TOTAL STAGE 1 OPERATIONS	TOTAL STAGE 2 OPERATIONS	AA STAGE 1 (EXEMPT)	AA STAGE 2 (EXEMPT)	AA STAGE 3 OPERATIONS	EVENTS	COMMENTS	OPERATIONS	TOTAL STAGE 1 OPERATIONS	TOTAL STAGE 2 OPERATIONS	AA STAGE 1 (EXEMPT)		AA STAGE 2 (EXEMPT)	AA STAGE 3 OPERATIONS	STAGE 3 GA OPERATIONS	STAGE 3 AT OPERATIONS
Sun-01			217								1						1		218
Mon-02			210							6							3		216
Tue-03	1	1	237							7							3		244
Wed-04			214							14							4		228
Thu-05			265							7							2		272
Fri-06			247							15							1		262
Sat-07			230							2									232
Sun-08	3	3	163							5							1		168
Mon-09	1	1	277							3							1		280
Tue-10			210							5									215
Wed-11			230							3							1		233
Thu-12	1	1	230							7							1		237
Fri-13			268							15							4		283
Sat-14	2	2	175							5							2		180
Sun-15	1	1	156							6							3		162
Mon-16			243						1	1	5			1			2		248
Tue-17	1	1	350							5							2		355
Wed-18	1	1	299							4									303
Thu-19	1	1	302				1			7									309
Fri-20			188							4							1		192
Sat-21			276							3							1		279
Sun-22			164						1	1	1						1		165
Mon-23	1	1	205							9							4		214
Tue-24			219							2							1		221
Wed-25			226							3									229
Thu-26			252							8							6		260
Fri-27			227							10							3		237
Sat-28			169							4									173
Sun-29			94							2							1		96
Mon-30			220							1									221
Tue-31			209							4							1		213
TOTALS	13	13	6,972	0	0	1	1	7	2	2	173	0	0	1	0	0	50	0	7,145

COMMENTS	DAY	NIGHT	TOTAL
Events	13	2	15
Comments	13	2	15
Operations (Ops)	6,972	173	7,145
%Events/Ops	0.2%	12%	0.2%
Comments & Events	10	10	10
%Comments/Ops	0.2%	12%	0.2%

NIGHT OPERATIONS	
Air Ambulance (AA)	J 1
EMS	H 8
Sheriff's Office	H 37
Mosquito Control	H 0
Mosquito Control	P 6
Military	H 0
Public Service	J,H,P 52
Non-Jet Air Carrier & GA	HP 71
Total GA Jet Ops	J 50
Total AT Jet Ops	J 0
Total Jet Operations	J 51
Night Ops - Total	J,H,P 173

RESTRICTIONS	Violations	Letters
Mandatory Restriction (MR)		
Runups: Maintenance	0	0
Jet Stage 1 day & night Ops	0	0
Jet Stage 2 day & night Ops	0	0
Voluntary Restriction (VR)		
Jet Stage 3 night Ops	136	57

NOISE COMMENTS & OPERATIONS SUMMARY

APPENDIX B

MONTH: June 2011

DATE	7 AM - 10 PM						10 PM - 7 AM						TOTAL OPERATIONS						
	JET+HELO+PROP			JET OPS			JET+HELO+PROP			JET OPS									
	EVENTS	COMMENTS	OPERATIONS	TOTAL STAGE 1 OPERATIONS	TOTAL STAGE 2 OPERATIONS	AA STAGE 1 (EXEMPT)	AA STAGE 2 (EXEMPT)	AA STAGE 3 OPERATIONS	EVENTS	COMMENTS	OPERATIONS	TOTAL STAGE 1 OPERATIONS		TOTAL STAGE 2 OPERATIONS	AA STAGE 1 (EXEMPT)	AA STAGE 2 (EXEMPT)	AA STAGE 3 OPERATIONS	STAGE 3 GA OPERATIONS	STAGE 3 AT OPERATIONS
Wed-01			188								5						3		193
Thur-02			245								8						1		253
Fri-03			264								8								272
Sat-04			218								3								221
Sun-05			166								6						1		172
Mon-06			238								5						2		243
Tue-07			172								11						3		183
Wed-08			209								10								219
Thur-09			189								15						4		204
Fri-10			231								6						1		237
Sat-11			183								1						1		184
Sun-12			109								3						2		112
Mon-13			278								6						2		284
Tue-14			193								4						2		197
Wed-15	1	1	199								3						1		202
Thur-16			248					1			4								252
Fri-17			188								5						2		193
Sat-18			194								6								200
Sun-19			125								9								134
Mon-20			153				1				4								157
Tue-21			174					1			3						1		177
Wed-22			198								3								201
Thu-23			197					1			6								203
Fri-24			209						1	1	5						1		214
Sat-25			190								4								194
Sun-26			97								4						2		101
Mon-27			214								4								218
Tue-28			136								9								145
Wed-29			186								1						1		187
Thu-30			201								8						1		209
TOTALS	1	1	5,792	0	0	0	1	3	1	1	169	0	0	0	0	0	31	0	5,961

COMMENTS	DAY	NIGHT	TOTAL
Events	1	1	2
Comments	1	1	2
Operations (Ops)	5,792	169	5,961
%Events/Ops	0.0%	0.6%	0.0%
Comments & Events	10	10	10
%Comments/Ops	0.0%	0.6%	0.0%

NIGHT OPERATIONS		
Air Ambulance (AA)	J	0
EMS	H	14
Sheriff's Office	H	31
Mosquito Control	H	
Mosquito Control	P	16
Military		0
Public Service	JHP	61
Non-Jet Air Carrier & GA	HP	77
Total GA Jet Ops	J	31
Total AT Jet Ops	J	0
Total Jet Operations	J	31
Night Ops - Total	JHP	169

RESTRICTIONS	Violations	Letters
Mandatory Restriction (MR)		
Runups: Maintenance	0	0
Jet Stage 1 day & night Ops	0	0
Jet Stage 2 day & night Ops	0	0
Voluntary Restriction (VR)		
Nighttime Operations	138	44