



Below is a summary of data contained in the Fourth Quarter 2002 Noise Report completed by the Operations Department. This summary includes the months of October, November, and December 2002.

|  | Compared to Same Period Last Year<br>(October, November, December 2001) |
|--|---|
| <b>Air Traffic - All Operations</b>                  |   |
| Commuter   | ↓ 12%   |
| General Aviation                                     | ↓ 22%   |
| Total Operations                                     | ↓ 21%   |
| <b>Air Traffic - Nighttime Operations</b>            |   |
| Jets (including air ambulances)                      | ↑ 8%  |
| Mosquito Control                                     | Unchanged   |
| Single/Multi-engine                                  | ↑ 6%  |
| Emergency Services Helicopters                       | ↑ 13%   |
| Total Nighttime Operations                           | ↑ 7%  |
| <b>Noise Complaints</b>                              |   |
| Northeast  | ↓ 8 complaints from 24 to 16  |
| Northwest  | ↓ 7 complaints from 11 to 4   |
| Southeast  | ↓ 3 complaints from 17 to 14  |
| Southwest  | ↓ 64 complaints from 124 to 60  |
| Unknown  | ↑ 3 complaints from 0 to 3  |
| Overall Comparison                                   | ↓ 79 complaints from 176 to 97  |
| <b>Total Complaints This Quarter = 97 complaints</b> |   |

Total complaints have decreased 45% when compared to the same period last year. Forty-three (43) different families made 97 complaints during this period, as compared to 67 families making 176 complaints during the same period last year. Nine families made 53 calls.

Fifty-six percent (56%) of complaints received were about jet departures.

**CITY OF NAPLES AIRPORT AUTHORITY**

**QUARTERLY NOISE REPORT**

NUMBER 24

For the period

October 1, 2002 through December 31, 2002

Prepared by  
Airport Operations

## TABLE OF CONTENTS

|   | Page  |
|---|---|
| <b>INTRODUCTION</b>                             | 1   |
| <b>PART I AIRCRAFT OPERATIONS</b>               | 1   |
| Table I   | Airport Traffic Summary 2                               |
| Figure IA                                       | Total Monthly Operations 3                              |
| Figure IB                                       | Total Night Operations by Month 4                       |
| Table II  | Quarterly Air Traffic Nighttime<br>Operations Summary 5 |
| <b>PART II CITIZEN COMPLAINTS</b>               | 6   |
| Table III                                       | Airport Noise Complaint Summary 7                       |
| Figure IIA                                      | Noise Complaints by<br>Geographical Area 8              |
| <b>PART III COMPLAINTS BY TIMEFRAME</b>         | 9   |
| Figure IIIA                                     | Noise Complaints by Hour 9                              |
| Figure IIIB                                     | Noise Complaints by Month 9                             |
| <b>PART IV COMPLAINTS BY OPERATIONAL SOURCE</b> | 10  |
| Figure IV                                       | Complaints by Type Aircraft 10                          |
| <b>PART V COMPLAINTS BY OPERATION</b>           | 11  |
| Figure V  | Complaints by Operations 11                             |
| <b>SUMMARY</b>                                  | 12  |
| Appendix A                                      | Total Aircraft Operations and Complaints                |
| Appendix B                                      | Noise Complaints vs. Number of Households               |
| Appendix C                                      | Noise Complaint / Operations Summary (Oct./Nov./Dec.)   |
| Appendix D                                      | Recurring Noise Monitoring Program                      |

**PART I**  
**AIRCRAFT OPERATIONS**

**INTRODUCTION**

This is the twenty-fourth Quarterly Noise Report prepared by the City of Naples Airport Authority - Airport Operations Department. This report is informational in nature. The data included in this report tracks aircraft operations, noise complaints and noise monitoring results obtained from the six (6) monitoring locations surrounding the airport (Appendix D). All percentages are rounded to the nearest percent.

**AIRCRAFT OPERATIONS**

Table I, page 2, Airport Traffic Summary, contains aircraft movement data from FAA Form 7230-1 and after hour statistics recorded by the City of Naples Airport Authority Security Officers. Naples Air Traffic Control Tower is operational from 6:00 AM through 10:00 PM. A single movement represents either one arrival or one departure by the indicated aircraft category.

**This Quarter Compared to Previous Quarter**

This quarter's commuter traffic, compared to the previous quarter, has increased by 57%. General aviation activity has decreased by 6%. Total traffic decreased by 2%, from 30,434 operations to 29,841. The daily average for the Fourth Quarter was 325 operations.

**This Quarter Compared to the Same Period One Year Ago**

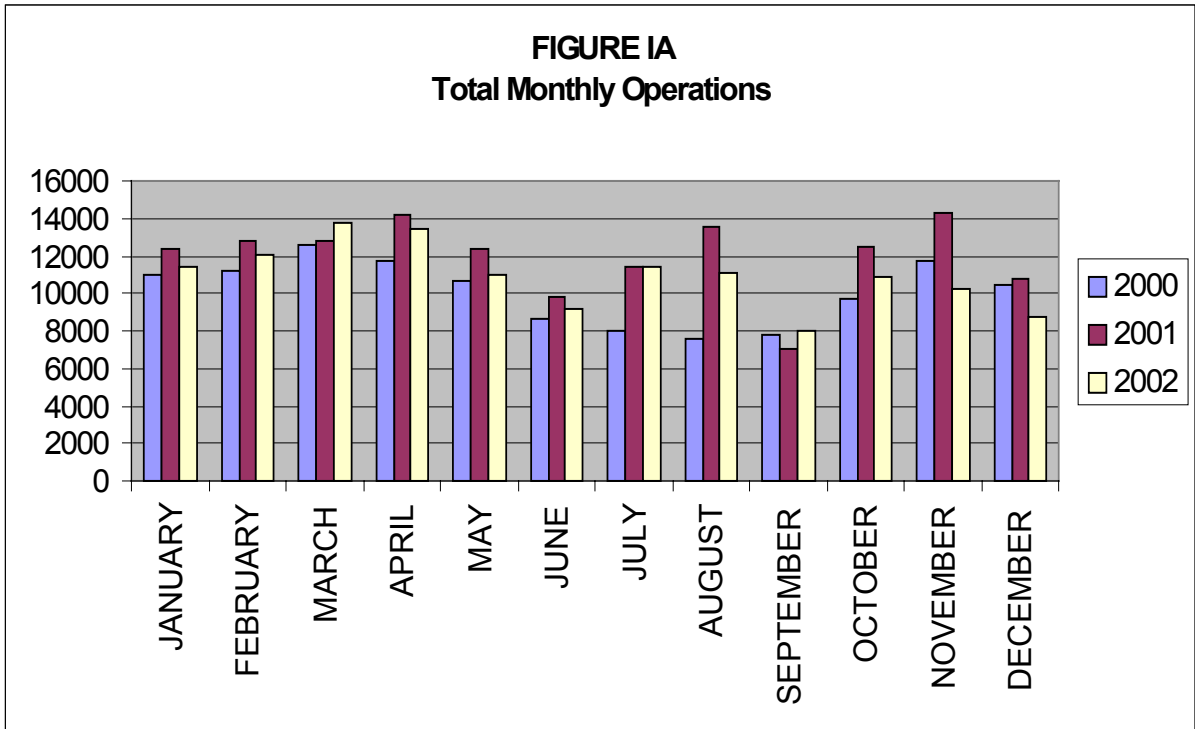
Compared to the same period last year, commuter traffic has decreased 12%, and general aviation air traffic has decreased 22%. Total air traffic operations decreased by 21% from 37,603 operations to 29,841.

**Table I**

**AIRPORT TRAFFIC SUMMARY  
Landings and Takeoffs  
2001-2002**

| <b>YEAR</b>                   | <b>COMMUTER</b> | <b>GENERAL AVIATION</b> | <b>MILITARY</b> | <b>TOTAL TRAFFIC</b> | <b>DAILY AVERAGE</b> |
|-------------------------------|-----------------|-------------------------|-----------------|----------------------|----------------------|
| <b>2001</b>                   |                 |                         |                 |                      |                      |
| <b>OCTOBER</b>                | 1,100           | 11,387                  | 16              | 12,503               | 403                  |
| <b>NOVEMBER</b>               | 1,404           | 12,924                  | 6               | 14,334               | 478                  |
| <b>DECEMBER</b>               | 1,141           | 9,612                   | 13              | 10,766               | 347                  |
| <b>TOTALS FOR 4th QUARTER</b> | 3,645           | 33,923                  | 35              | 37,603               | 347                  |
| <b>2002</b>                   |                 |                         |                 |                      |                      |
| <b>JANUARY</b>                | 1,553           | 9,819                   | 32              | 11,404               | 368                  |
| <b>FEBRUARY</b>               | 1,606           | 10,373                  | 28              | 12,007               | 429                  |
| <b>MARCH</b>                  | 1,711           | 11,975                  | 67              | 13,753               | 444                  |
| <b>TOTALS FOR 1st QUARTER</b> | 4,870           | 32,167                  | 127             | 37,164               | 408                  |
| <b>APRIL</b>                  | 1,385           | 12,031                  | 43              | 13,459               | 449                  |
| <b>MAY</b>                    | 1,163           | 9,763                   | 18              | 10,944               | 353                  |
| <b>JUNE</b>                   | 706             | 8,453                   | 27              | 9,186                | 306                  |
| <b>TOTALS FOR 2nd QUARTER</b> | 3,254           | 30,247                  | 88              | 33,589               | 414                  |
| <b>JULY</b>                   | 675             | 10,654                  | 53              | 11,382               | 367                  |
| <b>AUGUST</b>                 | 761             | 10,254                  | 28              | 11,043               | 356                  |
| <b>SEPTEMBER</b>              | 614             | 7,394                   | 1               | 8,009                | 267                  |
| <b>TOTALS FOR 3rd QUARTER</b> | 2,050           | 28,302                  | 82              | 30,434               | 330                  |
| <b>OCTOBER</b>                | 831             | 10,005                  | 2               | 10,838               | 350                  |
| <b>NOVEMBER</b>               | 1,183           | 9,027                   | 5               | 10,215               | 341                  |
| <b>DECEMBER</b>               | 1,206           | 7,579                   | 3               | 8,788                | 284                  |
| <b>TOTALS FOR 4th QUARTER</b> | 3,220           | 26,611                  | 10              | 29,841               | 325                  |

Figure IA below illustrates the airport's month-by-month total operational levels for 2000, 2001 and 2002.



There was a 21% decrease in overall airport operations during the Fourth Quarter of 2002, when compared to the same period in 2001.

**Night Time Operations**

Figure IB, below, illustrates the airport's total nighttime (10:00 PM – 7:00 AM) operational levels for 2000, 2001 and 2002.

Total nighttime operations have increased 7% in the Fourth Quarter of 2002 when compared to the Fourth Quarter 2001 statistics. Jet operations occurring at night increased from 204 operations during the 4th Quarter of 2001 to 220 during the 4th Quarter of 2002.

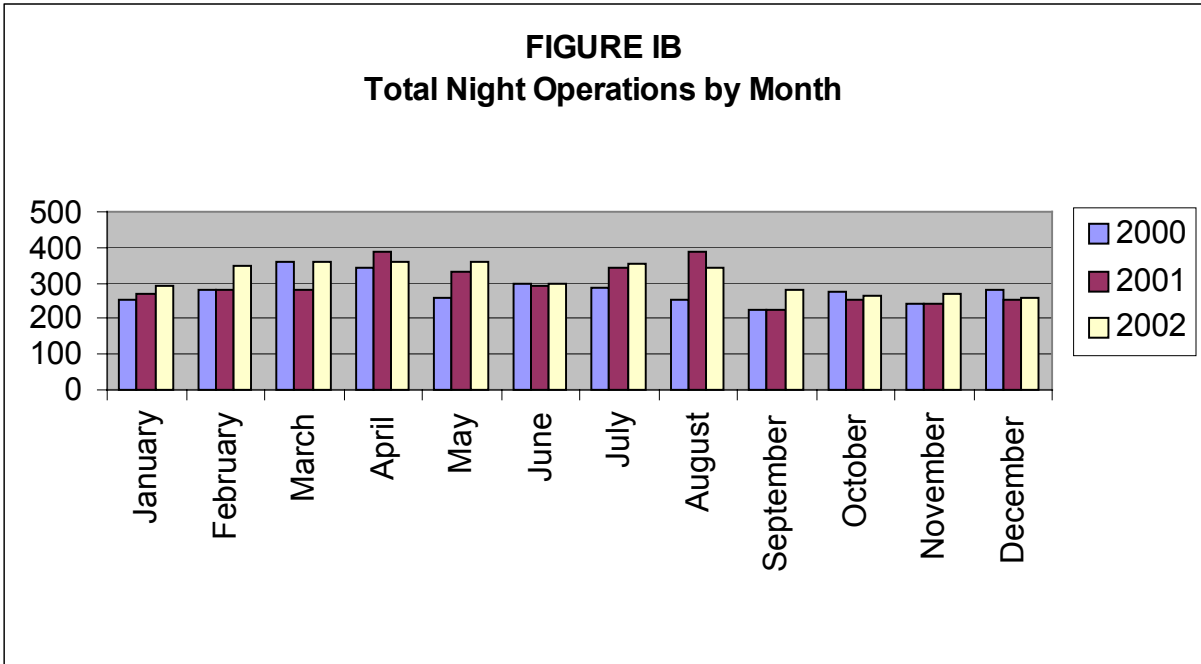


Table II, below, summarizes the types of nighttime operations occurring at the airport during the previous five quarters. Nighttime operations include voluntary curfew hours (10:00 PM through 7:00 AM). Reported nighttime operations have increased by 54 total operations when compared to the same time last year.

Nighttime jet operations (non-air ambulance) increased by fourteen (14) operations when compared to the Fourth Quarter of 2001. The number of air ambulance operations has increased by two (2) operations. Single and multi-engine aircraft operations have increased by 6%. The Public service operations represent 16% of the activity occurring at night.

**Table II**  
**Quarterly Air Traffic Nighttime Operations Summary – by Calendar Year**

| Activity  | 4 <sup>th</sup> 2001 | 1 <sup>st</sup> 2002 | 2 <sup>nd</sup> 2002 | 3 <sup>rd</sup> 2002 | 4 <sup>th</sup> 2002 |
|---|----------------------|----------------------|----------------------|----------------------|----------------------|
| Jets  | 204                  | 285                  | 176                  | 99                   | 218                  |
| Jet – Air Ambulance                               | 0                    | 5                    | 0                    | 0                    | 2                    |
| Single & Multi-engine                             | 427                  | 587                  | 663                  | 678                  | 453                  |
| Mosquito Control Aircraft                         | 15                   | 10                   | 62                   | 88                   | 15                   |
| Helicopters<br>Collier S.O., EMS<br>& Coast Guard | 95                   | 116                  | 113                  | 113                  | 107                  |
| <b>Total</b>                                      | <b>741</b>           | <b>887</b>           | <b>1,014</b>         | <b>978</b>           | <b>795</b>           |



## **PART II CITIZEN COMPLAINTS**

Table III, on page 7, is a summary of citizen noise complaints separated according to four geographical areas (Quadrants). Below is a sample representation of the neighborhoods in each Quadrant. Every neighborhood in the area is not included in this list, although it is included in the Quadrant total.

**Northeast Quadrant** - Briarwood, Coconut River Estates, Golden Gate, Grey Oaks, Hawks Ridge, Wyndemere, and surrounding northeast areas.

**Northwest Quadrant** - Bears Paw, Coconut River Estates, Coquina Sands, Country Club of Naples, Lake Forest, Lake Park, Park Shore, Ridge Lakes, River Estates, River Reach, Sun Terrace, Moorings, Wilderness, and surrounding northwest areas.

**Southwest Quadrant** - Aqualane Shores, Old Naples, Port Royal, Royal Harbor, and surrounding southwest neighborhoods.

**Southeast Quadrant** - Brookside, Coconut Grove, Flamingo Estates, Foxfire, Kings Lake, Lakewood, Naples Gardens, Rock Creek Campground, The Glades, and surrounding neighborhoods.

The analysis will include the specific nature of the complaint, whether it was an arriving or departing aircraft or an overflight. Complaints relative to nighttime Mosquito Control operations, Air Ambulance Flights, Sheriff's Office and EMS helicopter operations are included in this report.

### **This Quarter Compared to Previous Quarter**

This quarter's noise complaints, compared to the previous quarter, have increased from 20 to 97. Complaints received from neighborhoods to the northeast of the airport has increased by 15, from the northwest increased by 4, from the southeast increased by 7 and from the southwest increased by 50.

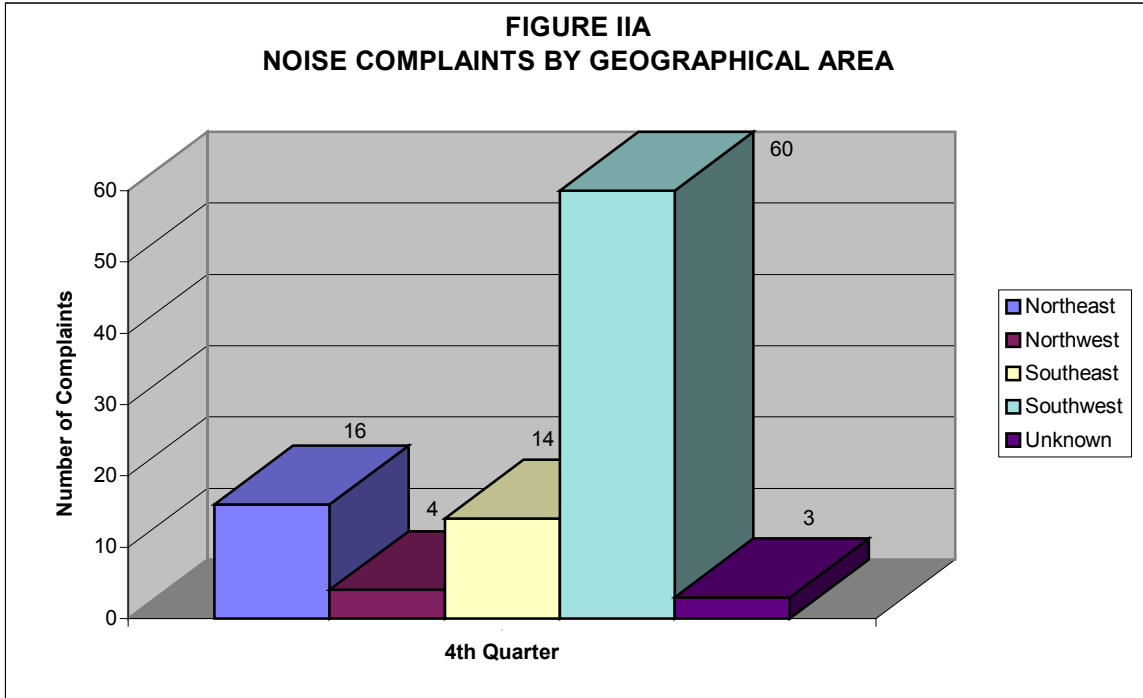
### **This Quarter Compared to the Same Period One Year Ago**

Compared to the same period last year, the total number of complaints decreased by 79 calls. Complaints received from neighborhoods to the northeast of the airport have decreased by 8, from the northwest decreased by 7, from the southeast decreased by 3 and from the southwest decreased by 64. Total complaints received have decreased from 176 to 97.

**Table III**  
**AIRPORT NOISE COMPLAINT SUMMARY**  
**2001-2002**

| YEAR                   | Northeast | Northwest | Southeast | Southwest | Unknown Location | Monthly Total |
|------------------------|-----------|-----------|-----------|-----------|------------------|---------------|
| 2001                   |           |           |           |           |                  |               |
| OCTOBER                | -         | 1         | 3         | 30        | -                | 34            |
| NOVEMBER               | 20        | 8         | 11        | 72        | -                | 111           |
| DECEMBER               | 4         | 2         | 3         | 22        | -                | 31            |
| TOTALS FOR 4th QUARTER | 24        | 11        | 17        | 124       | -                | 176           |
| 2002                   |           |           |           |           |                  |               |
| JANUARY                | 7         | 6         | 14        | 77        | 1                | 105           |
| FEBRUARY               | 10        | 9         | 5         | 61        | 3                | 88            |
| MARCH                  | 5         | 7         | 2         | 34        | -                | 48            |
| TOTALS FOR 1st QUARTER | 22        | 22        | 21        | 172       | 4                | 241           |
| APRIL                  | 8         | 4         | 6         | 49        | -                | 67            |
| MAY                    | -         | 2         | 1         | 13        | -                | 16            |
| JUNE                   | -         | 1         | 3         | 4         | -                | 8             |
| TOTALS FOR 2nd QUARTER | 8         | 7         | 10        | 66        | -                | 91            |
| JULY                   | -         | -         | -         | 5         | 1                | 6             |
| AUGUST                 | 1         | -         | 4         | 2         | -                | 7             |
| SEPTEMBER              | -         | -         | 3         | 3         | 1                | 7             |
| TOTALS FOR 3rd QUARTER | 1         | -         | 7         | 10        | 2                | 20            |
| OCTOBER                | 4         | -         | 4         | 11        | -                | 19            |
| NOVEMBER               | 10        | 2         | 6         | 29        | -                | 47            |
| DECEMBER               | 2         | 2         | 4         | 20        | 3                | 31            |
| TOTALS FOR 4th QUARTER | 16        | 4         | 14        | 60        | 3                | 97            |

Figure IIA, below, graphically compares the noise complaints received by geographical areas based on data collected during the Fourth Quarter of 2002. Total complaints for this quarter have increased 80% from the previous quarter, and decreased 45% when compared to the same period one year ago.



### PART III COMPLAINTS BY TIMEFRAME

Figure IIIA, below, depicts noise complaints for the Fourth Quarter according to the time of the single event. Most complaints were received at 5:00 AM (17%), 10:00 AM (12%) and 10:00 PM (11%). Forty-two percent (42%) of the total complaints were received during the voluntary curfew hours.

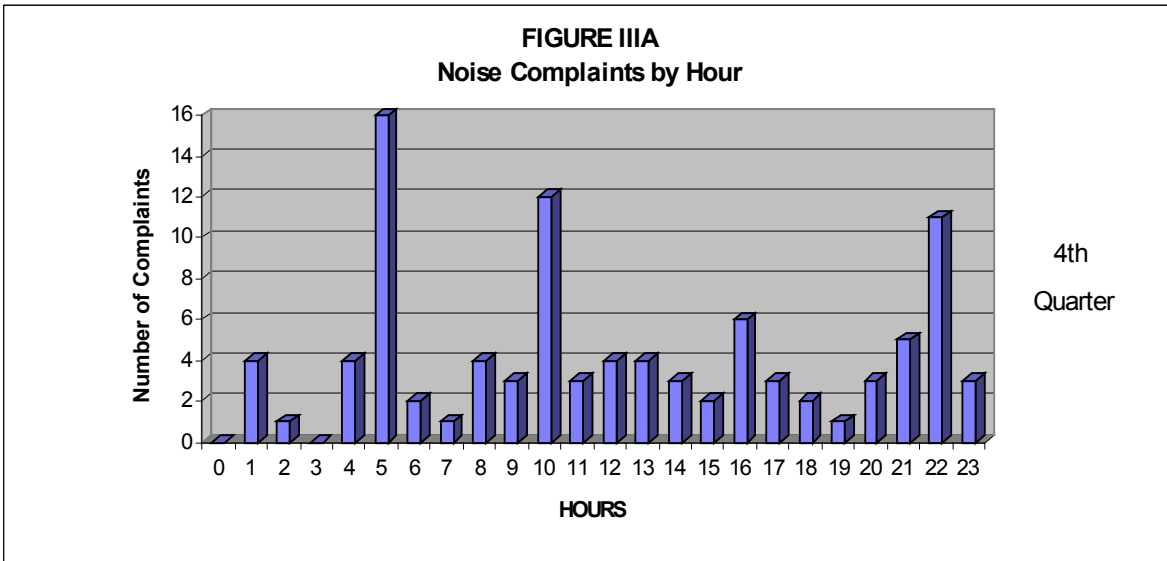
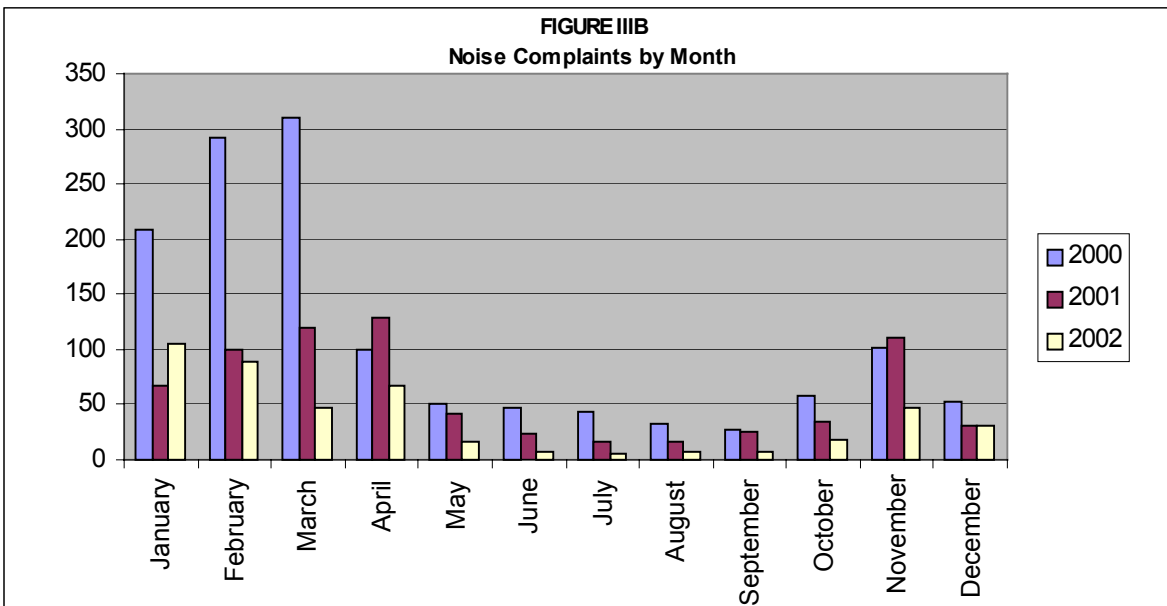
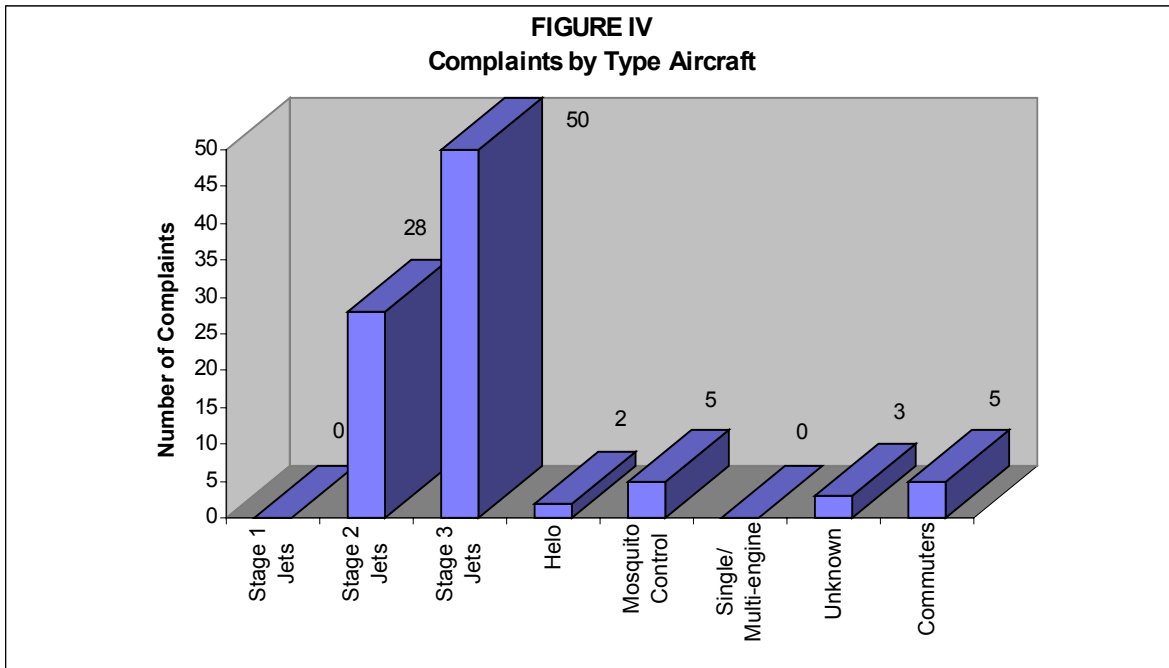


Figure IIIB below, illustrates the airport’s complaint volume for 2000, 2001 and 2002.



**PART IV  
COMPLAINTS BY OPERATIONAL SOURCE**

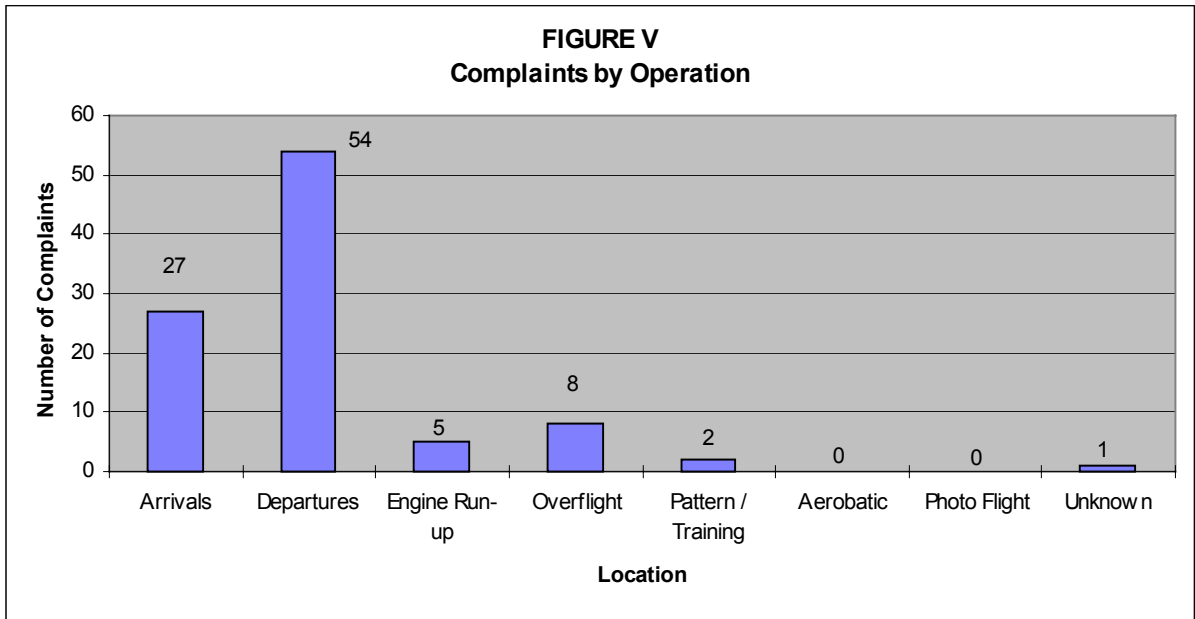
Figure IV below, indicates what types of aircraft the complainants were calling about. When comparing the last three (3) quarters noise complaints, it appears the complaints have remained relatively the same in regards to jet aircraft operations.



Staff received 18 complaints from Stage 2 Air Ambulances during the Fourth Quarter of 2002.

**PART V**  
**COMPLAINTS BY OPERATION**

Figure V, below, shows the operational source of the noise complaints from the Forth Quarter of 2002.



## SUMMARY

### **Air Traffic**

Compared to the previous quarter, commuter traffic has increased 57%, general aviation traffic has decreased by 6%, and total air traffic decreased by 2%. Compared to the same period one year ago, commuter traffic decreased 12%, general aviation operations have decreased by 22%, and total traffic decreased 21%.

Fourteen percent of the total nighttime operations were attributed to Sheriff's Office or Emergency Services helicopters, and jet aircraft operations have increased by 9% when compared to same period last year. Single and multi-engine operations have increased by 9%, while Mosquito Control operations have remained the same. Overall nighttime operations have increased by 9% when compared to last year.

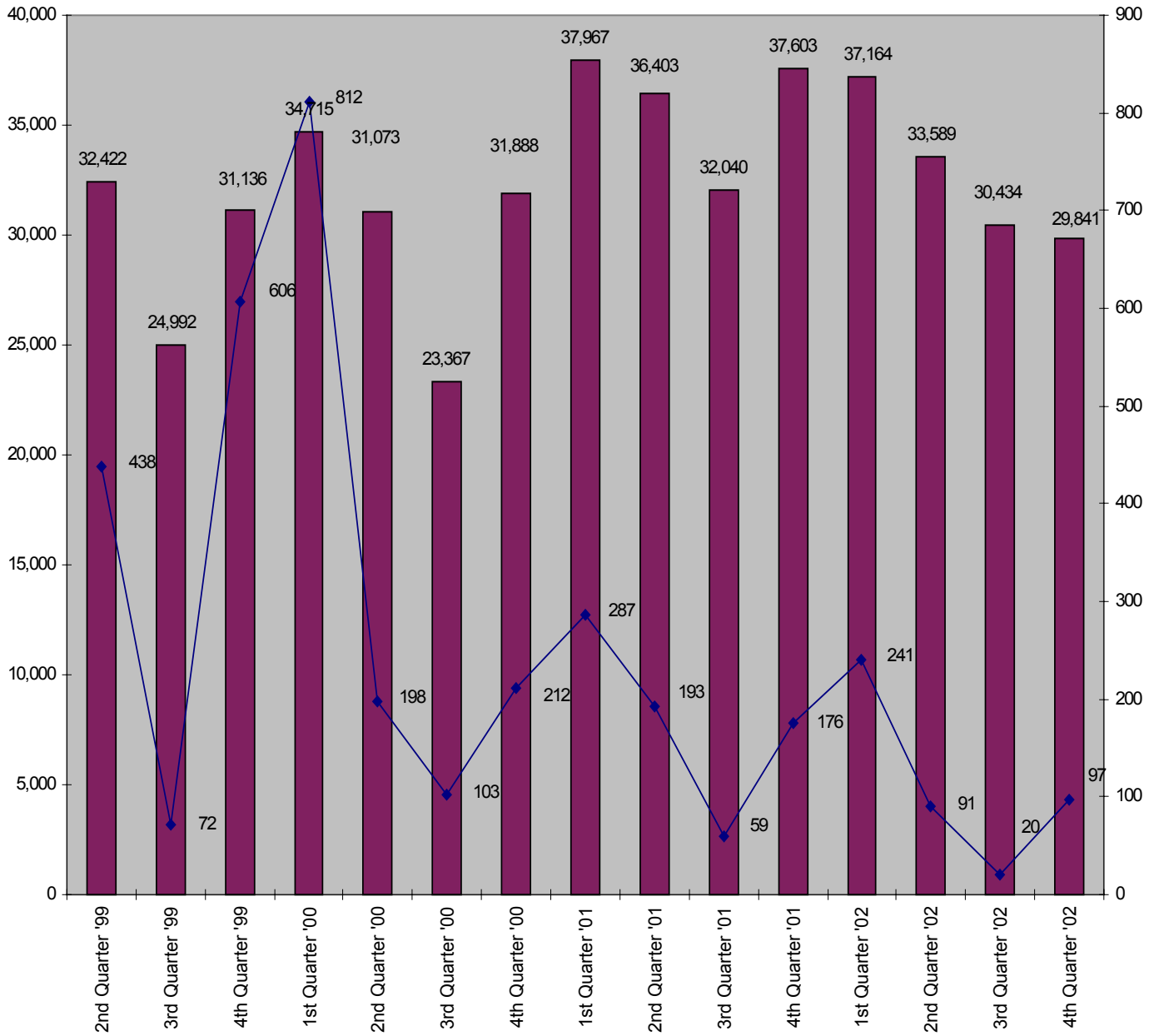
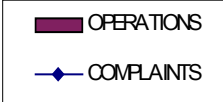
### **Noise Complaints**

Compared to the previous quarter, noise complaints have increased from 20 to 97. Southwest Quadrant neighborhoods generated the most complaints during the Fourth Quarter of 2002, with a total of 60 complaints. Other areas generated the following number of complaints: Northeast-16, Northwest-4, Southeast-14 and 3 were unknown.

### **Noise Complaints by Family**

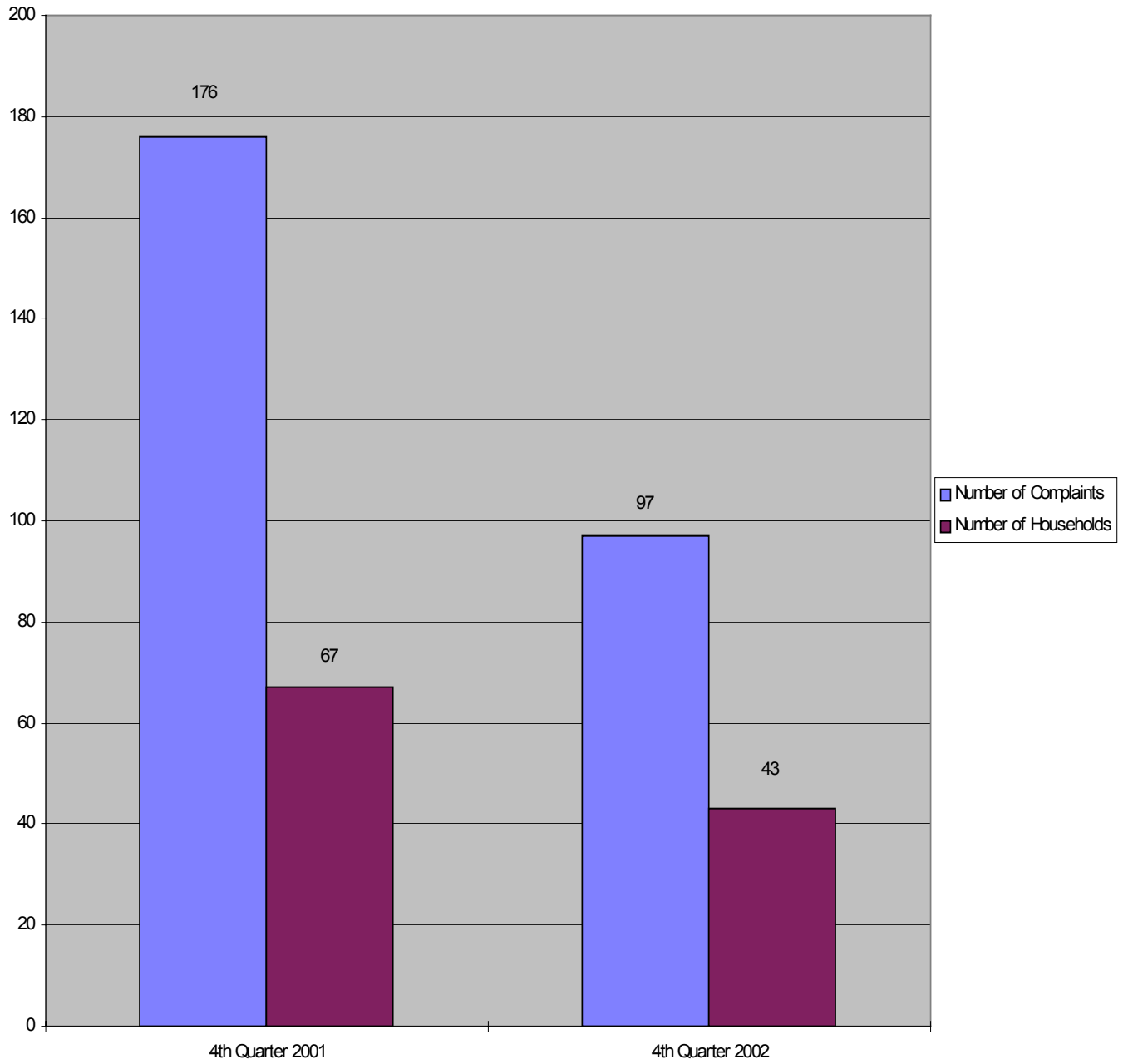
Forty-three (43) different families made 97 complaints to the Noise Abatement Office during the Fourth Quarter of 2002. Nine families made 53 calls, or 55% of the total complaints.

### Total Aircraft Operations and Complaints





4th QUARTER  
Number of Complaints vs. Number of Households



## NOISE COMPLAINTS/COMMENTS & OPERATIONS SUMMARY

MONTH: October 2002

| DATE          | 7 AM - 10 PM  |                       |               |                          |                          |                                |                                |                       |        | 10 PM - 7 AM          |            |                          |                  |                          |                                |                                |                       |                    | TOTAL OPERATIONS |
|---------------|---------------|-----------------------|---------------|--------------------------|--------------------------|--------------------------------|--------------------------------|-----------------------|--------|-----------------------|------------|--------------------------|------------------|--------------------------|--------------------------------|--------------------------------|-----------------------|--------------------|------------------|
|               | JET+HELO+PROP |                       |               | JET OPS                  |                          |                                | JET+HELO+PROP                  |                       |        | JET OPS               |            |                          | TOTAL OPERATIONS |                          |                                |                                |                       |                    |                  |
|               | EVENTS        | COMPLAINTS / COMMENTS | OPERATIONS    | TOTAL STAGE 1 OPERATIONS | TOTAL STAGE 2 OPERATIONS | AA STAGE 1 (EXEMPT) OPERATIONS | AA STAGE 2 (EXEMPT) OPERATIONS | AA STAGE 3 OPERATIONS | EVENTS | COMPLAINTS / COMMENTS | OPERATIONS | TOTAL STAGE 1 OPERATIONS |                  | TOTAL STAGE 2 OPERATIONS | AA STAGE 1 (EXEMPT) OPERATIONS | AA STAGE 2 (EXEMPT) OPERATIONS | AA STAGE 3 OPERATIONS | STAGE 3 OPERATIONS |                  |
| Tue-01        |               |                       | 254           |                          |                          |                                |                                |                       |        |                       | 14         |                          |                  |                          |                                |                                | 2                     | 268                |                  |
| Wed-02        |               |                       | 290           |                          | 1                        |                                |                                |                       |        |                       | 3          |                          |                  |                          |                                |                                |                       | 293                |                  |
| Thu-03        |               |                       | 324           |                          |                          |                                |                                |                       |        |                       | 7          |                          |                  |                          |                                |                                |                       | 331                |                  |
| Fri-04        |               |                       | 319           |                          |                          |                                |                                |                       |        |                       | 3          |                          |                  |                          |                                |                                |                       | 322                |                  |
| Sat-05        |               |                       | 335           |                          |                          |                                |                                |                       |        |                       | 3          |                          |                  |                          |                                |                                | 2                     | 338                |                  |
| Sun-06        |               |                       | 288           |                          |                          |                                | 2                              |                       |        |                       | 9          |                          |                  |                          |                                |                                | 3                     | 297                |                  |
| Mon-07        |               |                       | 257           |                          |                          |                                |                                |                       |        |                       | 2          |                          |                  |                          |                                |                                |                       | 259                |                  |
| Tue-08        | 1             | 1                     | 403           |                          |                          |                                |                                |                       |        | 1                     | 1          | 6                        |                  |                          |                                |                                | 3                     | 409                |                  |
| Wed-09        |               |                       | 407           |                          |                          |                                |                                |                       |        |                       |            | 6                        |                  |                          |                                |                                | 4                     | 413                |                  |
| Thu-10        |               |                       | 371           |                          |                          |                                |                                |                       |        |                       |            | 12                       |                  |                          |                                |                                | 4                     | 383                |                  |
| Fri-11        | 1             | 1                     | 416           |                          |                          |                                | 2                              |                       |        |                       |            | 8                        |                  |                          |                                |                                | 3                     | 424                |                  |
| Sat-12        |               |                       | 327           |                          |                          |                                |                                |                       |        |                       |            | 6                        |                  |                          |                                |                                |                       | 333                |                  |
| Sun-13        |               |                       | 284           |                          |                          |                                |                                |                       |        |                       |            | 7                        |                  |                          |                                |                                | 1                     | 291                |                  |
| Mon-14        |               |                       | 294           |                          |                          |                                |                                |                       |        |                       |            | 10                       |                  |                          |                                |                                | 5                     | 304                |                  |
| Tue-15        | 1             | 2                     | 279           |                          | 1                        |                                |                                |                       |        |                       |            | 8                        |                  |                          |                                |                                | 2                     | 287                |                  |
| Wed-16        | 2             | 2                     | 341           |                          | 2                        |                                |                                | 4                     |        |                       |            | 18                       |                  |                          |                                |                                | 6                     | 359                |                  |
| Thu-17        |               |                       | 343           |                          |                          |                                |                                |                       |        | 2                     | 2          | 13                       |                  |                          |                                |                                | 3                     | 356                |                  |
| Fri-18        |               |                       | 367           |                          | 1                        |                                |                                |                       |        |                       |            | 11                       |                  |                          |                                |                                | 2                     | 378                |                  |
| Sat-19        |               |                       | 299           |                          | 2                        |                                |                                |                       |        |                       |            | 11                       |                  |                          |                                |                                | 2                     | 310                |                  |
| Sun-20        | 1             | 1                     | 278           |                          |                          |                                |                                |                       |        | 1                     | 1          | 11                       |                  |                          |                                |                                | 4                     | 289                |                  |
| Mon-21        |               |                       | 296           |                          |                          |                                |                                |                       |        |                       |            | 10                       |                  |                          |                                |                                | 3                     | 306                |                  |
| Tue-22        |               |                       | 295           |                          |                          |                                |                                | 2                     |        |                       |            | 9                        |                  |                          |                                |                                | 1                     | 304                |                  |
| Wed-23        |               |                       | 365           |                          |                          |                                |                                |                       |        |                       |            | 7                        |                  |                          |                                |                                | 1                     | 372                |                  |
| Thu-24        |               |                       | 380           |                          |                          |                                |                                | 2                     |        |                       |            | 7                        |                  |                          |                                |                                | 1                     | 387                |                  |
| Fri-25        |               |                       | 403           |                          | 1                        |                                |                                |                       |        | 1                     | 2          | 9                        |                  |                          |                                |                                | 2                     | 412                |                  |
| Sat-26        | 1             | 1                     | 443           |                          |                          |                                |                                |                       |        |                       |            | 18                       |                  |                          |                                |                                |                       | 461                |                  |
| Sun-27        | 1             | 1                     | 426           |                          | 1                        |                                |                                |                       |        |                       |            | 6                        |                  |                          |                                |                                |                       | 432                |                  |
| Mon-28        | 1             | 1                     | 386           |                          |                          |                                | 2                              | 6                     |        |                       |            | 4                        |                  |                          |                                |                                | 1                     | 390                |                  |
| Tue-29        |               |                       | 364           |                          |                          |                                |                                |                       |        |                       |            | 11                       |                  |                          |                                |                                | 5                     | 375                |                  |
| Wed-30        |               |                       | 411           |                          | 2                        |                                |                                |                       |        |                       |            | 11                       |                  |                          |                                |                                | 3                     | 422                |                  |
| Thurs-31      | 3             | 3                     | 328           |                          | 2                        |                                | 6                              |                       |        |                       |            | 5                        |                  |                          |                                |                                | 2                     | 333                |                  |
| <b>TOTALS</b> | <b>12</b>     | <b>13</b>             | <b>10,573</b> | <b>0</b>                 | <b>13</b>                | <b>0</b>                       | <b>12</b>                      | <b>14</b>             |        | <b>5</b>              | <b>6</b>   | <b>265</b>               | <b>0</b>         | <b>0</b>                 | <b>0</b>                       | <b>0</b>                       | <b>65</b>             | <b>10,838</b>      |                  |

| COMPLAINTS / COMMENTS        |        |       |        |
|------------------------------|--------|-------|--------|
|                              | DAY    | NIGHT | TOTAL  |
| Events                       | 12     | 5     | 17     |
| Complaints/Comments          | 13     | 6     | 19     |
| Operations (Ops)             | 10,573 | 265   | 10,838 |
| %Events/Ops                  | 0.1%   | 1.9%  | 0.2%   |
| Complaints/Comments & Events | 11     | 12    | 11     |
| % Complaints/Comments / Ops  | 0.1%   | 2.3%  | 0.2%   |

| NIGHT OPERATIONS         |       |     |
|--------------------------|-------|-----|
| Air Ambulance (AA)       | J     | 0   |
| EMS                      | H     | 11  |
| Sheriff's Office         | H     | 16  |
| Mosquito Control         | H     | 3   |
| Mosquito Control         | P     | 8   |
| <b>Public Service</b>    | J,H,P | 38  |
| Air Carrier & GA [Other] | H,P   | 162 |
| Jet Operations           | J     | 65  |
| <b>Night Ops - Total</b> | J,H,P | 265 |

| RESTRICTIONS                      |  |  | Violations | Letters |
|-----------------------------------|--|--|------------|---------|
| <b>Mandatory Restriction (MR)</b> |  |  |            |         |
| Runups: Maintenance               |  |  | 0          | 0       |
| Jet Stage 1 day & night Ops       |  |  | 0          | 0       |
| Jet Stage 2 day & night Ops       |  |  | 0          | 0       |
| <b>Voluntary Restriction (VR)</b> |  |  |            |         |
| Jet Stage 3 night Ops             |  |  | 3          | 3       |

## NOISE COMPLAINTS/COMMENTS & OPERATIONS SUMMARY

MONTH: November 2002

| DATE     | 7 AM - 10 PM  |                       |            |                          |                          |                     |                     |                       | 10 PM - 7 AM  |                       |            |                          |                          |                     |                     |                       | TOTAL OPERATIONS |                    |
|----------|---------------|-----------------------|------------|--------------------------|--------------------------|---------------------|---------------------|-----------------------|---------------|-----------------------|------------|--------------------------|--------------------------|---------------------|---------------------|-----------------------|------------------|--------------------|
|          | JET+HELO+PROP |                       |            | JET OPS                  |                          |                     |                     |                       | JET+HELO+PROP |                       |            | JET OPS                  |                          |                     |                     |                       |                  |                    |
|          | EVENTS        | COMPLAINTS / COMMENTS | OPERATIONS | TOTAL STAGE 1 OPERATIONS | TOTAL STAGE 2 OPERATIONS | AA STAGE 1 (EXEMPT) | AA STAGE 2 (EXEMPT) | AA STAGE 3 OPERATIONS | EVENTS        | COMPLAINTS / COMMENTS | OPERATIONS | TOTAL STAGE 1 OPERATIONS | TOTAL STAGE 2 OPERATIONS | AA STAGE 1 (EXEMPT) | AA STAGE 2 (EXEMPT) | AA STAGE 3 OPERATIONS |                  | STAGE 3 OPERATIONS |
| Fri-01   | 1             | 1                     | 295        |                          | 1                        |                     |                     |                       |               |                       | 10         |                          |                          |                     |                     |                       | 2                | 305                |
| Sat-02   | 1             | 1                     | 382        |                          | 1                        |                     |                     |                       | 1             | 1                     | 11         |                          |                          |                     |                     |                       | 3                | 393                |
| Sun-03   |               |                       | 311        |                          | 3                        |                     |                     |                       |               |                       | 6          |                          |                          |                     |                     |                       | 3                | 317                |
| Mon-04   | 1             | 1                     | 318        |                          | 2                        |                     |                     |                       | 1             | 10                    | 7          |                          |                          |                     | 2                   |                       | 3                | 325                |
| Tues-05  |               |                       | 332        |                          | 1                        |                     |                     |                       |               |                       | 5          |                          |                          |                     |                     |                       | 1                | 337                |
| Wed-06   | 1             | 1                     | 256        |                          |                          |                     | 2                   |                       |               |                       | 10         |                          |                          |                     |                     |                       | 4                | 266                |
| Thur-07  | 2             | 2                     | 366        |                          | 2                        |                     |                     |                       | 1             | 1                     | 14         |                          |                          |                     |                     |                       | 6                | 380                |
| Fri-08   |               |                       | 388        |                          |                          |                     |                     |                       | 1             | 1                     | 15         |                          |                          |                     |                     |                       | 6                | 403                |
| Sat-09   |               |                       | 250        |                          | 1                        |                     |                     |                       | 1             | 1                     | 3          |                          |                          |                     |                     |                       |                  | 253                |
| Sun-10   |               |                       | 345        |                          |                          |                     |                     | 2                     |               |                       | 12         |                          |                          |                     |                     |                       | 3                | 357                |
| Mon-11   |               |                       | 351        |                          | 1                        |                     | 2                   |                       |               |                       | 13         |                          |                          |                     |                     |                       | 5                | 364                |
| Tues-12  |               |                       | 361        |                          |                          |                     |                     |                       | 1             | 1                     | 6          |                          |                          |                     |                     |                       | 3                | 367                |
| Wed-13   | 3             | 5                     | 269        |                          | 1                        |                     | 2                   |                       |               |                       | 9          |                          |                          |                     |                     |                       | 4                | 278                |
| Thur-14  |               |                       | 412        |                          |                          |                     |                     |                       |               |                       | 12         |                          |                          |                     |                     |                       | 3                | 424                |
| Fri-15   | 2             | 2                     | 376        |                          |                          |                     |                     |                       |               |                       | 5          |                          |                          |                     |                     |                       | 2                | 381                |
| Sat-16   |               |                       | 153        |                          |                          |                     |                     |                       |               |                       | 10         |                          |                          |                     |                     |                       | 1                | 163                |
| Sun-17   | 2             | 2                     | 138        |                          |                          |                     |                     |                       |               |                       | 4          |                          |                          |                     |                     |                       | 1                | 142                |
| Mon-18   |               |                       | 367        |                          |                          |                     |                     |                       |               |                       | 11         |                          |                          |                     |                     |                       | 5                | 378                |
| Tues-19  | 3             | 3                     | 494        |                          |                          |                     |                     |                       | 1             | 1                     | 9          |                          |                          |                     |                     |                       | 1                | 503                |
| Wed-20   |               |                       | 370        |                          |                          |                     |                     |                       | 1             | 1                     | 12         |                          |                          |                     |                     |                       | 4                | 382                |
| Thurs-21 |               |                       | 258        |                          | 1                        |                     |                     |                       |               |                       | 6          |                          |                          |                     |                     |                       | 1                | 264                |
| Fri-22   | 3             | 4                     | 266        |                          |                          |                     |                     |                       | 1             | 1                     | 9          |                          |                          |                     |                     |                       | 2                | 275                |
| Sat-23   |               |                       | 351        |                          |                          |                     |                     |                       |               |                       | 10         |                          |                          |                     |                     |                       | 1                | 361                |
| Sun-24   |               |                       | 364        |                          |                          |                     |                     |                       |               |                       | 6          |                          |                          |                     |                     |                       | 1                | 370                |
| Mon-25   |               |                       | 333        |                          | 1                        |                     |                     |                       | 1             | 1                     | 12         |                          |                          |                     |                     |                       | 6                | 345                |
| Tues-26  |               |                       | 507        |                          | 1                        |                     |                     |                       | 4             | 5                     | 20         |                          |                          |                     |                     |                       | 13               | 527                |
| Wed-27   |               |                       | 417        |                          |                          |                     |                     |                       | 1             | 1                     | 6          |                          |                          |                     |                     |                       | 2                | 423                |
| Thurs-28 |               |                       | 198        |                          | 1                        |                     |                     |                       |               |                       | 4          |                          |                          |                     |                     |                       | 1                | 202                |
| Fri-29   |               |                       | 333        |                          | 2                        |                     |                     |                       |               |                       | 1          |                          |                          |                     |                     |                       |                  | 334                |
| Sat-30   |               |                       | 383        |                          |                          |                     |                     | 2                     |               |                       | 13         |                          |                          |                     |                     |                       | 1                | 396                |
| TOTALS   | 19            | 22                    | 9,944      | 0                        | 19                       | 0                   | 6                   | 4                     | 15            | 25                    | 271        | 0                        | 0                        | 0                   | 2                   | 0                     | 88               | 10,215             |

| COMPLAINTS / COMMENTS        |       |       |        |
|------------------------------|-------|-------|--------|
|                              | DAY   | NIGHT | TOTAL  |
| Events                       | 19    | 15    | 34     |
| Complaints/Comments          | 22    | 25    | 47     |
| Operations (Ops)             | 9,944 | 271   | 10,215 |
| %Events/Ops                  | 0.2%  | 5.5%  | 0.3%   |
| Complaints/Comments & Events | 1.2   | 1.7   | 1.4    |
| % Complaints/Comments / Ops  | 0.2%  | 9.2%  | 0.5%   |

| NIGHT OPERATIONS         |       |     |
|--------------------------|-------|-----|
| Air Ambulance (AA)       | J     | 2   |
| EMS                      | H     | 22  |
| Sheriff's Office         | H     | 20  |
| Mosquito Control         | H     | 2   |
| Mosquito Control         | P     | 0   |
| <b>Public Service</b>    | J,H,P | 46  |
| Air Carrier & GA [Other] | H,P   | 137 |
| Jet Operations           | J     | 88  |
| <b>Night Ops - Total</b> | J,H,P | 271 |

| RESTRICTIONS                      |  | Violations | Letters |
|-----------------------------------|--|------------|---------|
| <b>Mandatory Restriction (MR)</b> |  |            |         |
| Runups: Maintenance               |  | 0          | 0       |
| Jet Stage 1 day & night Ops       |  | 0          | 0       |
| Jet Stage 2 day & night Ops       |  | 0          | 0       |
| <b>Voluntary Restriction (VR)</b> |  |            |         |
| Jet Stage 3 night Ops             |  | 8          | 8       |

## NOISE COMPLAINTS/COMMENTS & OPERATIONS SUMMARY

MONTH: December 2002

| DATE   | 7 AM - 10 PM  |                       |            |                          |                          |                     |                     | 10 PM - 7 AM          |        |                       |            |                          |                          |                     | TOTAL OPERATIONS |                     |                       |
|--------|---------------|-----------------------|------------|--------------------------|--------------------------|---------------------|---------------------|-----------------------|--------|-----------------------|------------|--------------------------|--------------------------|---------------------|------------------|---------------------|-----------------------|
|        | JET+HELO+PROP |                       |            | JET OPS                  |                          |                     |                     | JET+HELO+PROP         |        |                       | JET OPS    |                          |                          |                     |                  |                     |                       |
|        | EVENTS        | COMPLAINTS / COMMENTS | OPERATIONS | TOTAL STAGE 1 OPERATIONS | TOTAL STAGE 2 OPERATIONS | AA STAGE 1 (EXEMPT) | AA STAGE 2 (EXEMPT) | AA STAGE 3 OPERATIONS | EVENTS | COMPLAINTS / COMMENTS | OPERATIONS | TOTAL STAGE 1 OPERATIONS | TOTAL STAGE 2 OPERATIONS | AA STAGE 1 (EXEMPT) |                  | AA STAGE 2 (EXEMPT) | AA STAGE 3 OPERATIONS |
| Sun-01 | 6             | 6                     | 289        |                          | 2                        |                     |                     |                       |        |                       | 5          |                          |                          |                     |                  |                     | 294                   |
| Mon-02 |               |                       | 294        |                          | 1                        |                     |                     |                       |        | 15                    |            |                          |                          |                     |                  | 5                   | 309                   |
| Tue-03 |               |                       | 433        |                          |                          |                     |                     |                       |        | 10                    |            |                          |                          |                     |                  | 6                   | 443                   |
| Wed-04 |               |                       | 392        |                          |                          |                     |                     |                       |        | 7                     |            |                          |                          |                     |                  | 1                   | 399                   |
| Thu-05 | 1             | 1                     | 251        |                          |                          |                     |                     |                       | 1      | 1                     | 8          |                          |                          |                     |                  | 5                   | 259                   |
| Fri-06 |               |                       | 241        |                          | 2                        |                     | 2                   | 2                     |        |                       | 7          |                          |                          |                     |                  | 3                   | 248                   |
| Sat-07 | 1             | 2                     | 261        |                          | 1                        |                     |                     |                       |        |                       | 5          |                          |                          |                     |                  |                     | 266                   |
| Sun-08 |               |                       | 269        |                          |                          |                     |                     |                       |        |                       | 5          |                          |                          |                     |                  | 3                   | 264                   |
| Mon-09 | 1             | 1                     | 124        |                          | 1                        |                     | 2                   |                       | 2      | 2                     | 5          |                          |                          |                     |                  | 3                   | 129                   |
| Tue-10 | 3             | 3                     | 245        |                          |                          |                     | 2                   |                       |        |                       | 6          |                          |                          |                     |                  | 2                   | 251                   |
| Wed-11 | 1             | 1                     | 336        |                          |                          |                     |                     |                       |        |                       | 5          |                          |                          |                     |                  | 1                   | 341                   |
| Thu-12 |               |                       | 293        |                          |                          |                     |                     |                       | 1      | 1                     | 5          |                          |                          |                     |                  | 2                   | 298                   |
| Fri-13 |               |                       | 86         |                          |                          |                     |                     |                       |        |                       | 20         |                          |                          |                     |                  | 1                   | 106                   |
| Sat-14 |               |                       | 256        |                          |                          |                     |                     |                       |        |                       | 6          |                          |                          |                     |                  | 1                   | 262                   |
| Sun-15 |               |                       | 275        |                          |                          |                     |                     |                       | 1      | 1                     | 3          |                          |                          |                     |                  | 1                   | 278                   |
| Mon-16 |               |                       | 265        |                          |                          |                     |                     |                       |        |                       | 11         |                          |                          |                     |                  | 2                   | 276                   |
| Tue-17 |               |                       | 297        |                          |                          |                     |                     |                       |        |                       | 9          |                          |                          |                     |                  | 1                   | 306                   |
| Wed-18 |               |                       | 371        |                          |                          |                     |                     |                       | 1      | 1                     | 9          |                          |                          |                     |                  | 2                   | 380                   |
| Thu-19 | 1             | 1                     | 363        |                          |                          |                     |                     |                       |        |                       | 16         |                          |                          |                     |                  | 5                   | 379                   |
| Fri-20 | 1             | 1                     | 159        |                          |                          |                     |                     |                       | 1      | 2                     | 7          |                          |                          |                     |                  | 2                   | 166                   |
| Sat-21 |               |                       | 310        |                          |                          |                     |                     |                       |        |                       | 10         |                          |                          |                     |                  | 2                   | 320                   |
| Sun-22 |               |                       | 219        |                          |                          |                     |                     |                       | 1      | 1                     | 14         |                          |                          |                     |                  | 2                   | 233                   |
| Mon-23 |               |                       | 283        |                          |                          |                     |                     |                       |        |                       | 7          |                          |                          |                     |                  | 2                   | 290                   |
| Tue-24 |               |                       | 109        |                          | 2                        |                     |                     |                       | 1      | 1                     | 7          |                          |                          |                     |                  |                     | 116                   |
| Wed-25 |               |                       | 90         |                          |                          |                     |                     |                       |        |                       | 1          |                          |                          |                     |                  |                     | 91                    |
| Thu-26 | 2             | 2                     | 380        |                          |                          |                     |                     |                       |        |                       | 4          |                          |                          |                     |                  | 1                   | 384                   |
| Fri-27 |               |                       | 456        |                          |                          |                     |                     |                       |        |                       | 15         |                          |                          |                     |                  | 4                   | 471                   |
| Sat-28 | 2             | 2                     | 346        |                          |                          |                     |                     |                       |        |                       | 11         |                          |                          |                     |                  | 1                   | 357                   |
| Sun-29 | 1             | 1                     | 302        |                          | 1                        |                     |                     | 2                     |        |                       | 11         |                          |                          |                     |                  | 4                   | 313                   |
| Mon-30 |               |                       | 317        |                          | 1                        |                     |                     |                       |        |                       | 6          |                          |                          |                     |                  | 2                   | 323                   |
| Tue-31 |               |                       | 229        |                          |                          |                     |                     |                       |        |                       | 7          |                          |                          |                     |                  | 1                   | 236                   |
| TOTALS | 20            | 21                    | 8,531      | 0                        | 11                       | 0                   | 6                   | 4                     | 9      | 10                    | 257        | 0                        | 0                        | 0                   | 0                | 65                  | 8,788                 |

| COMPLAINTS / COMMENTS        |       |       |       |
|------------------------------|-------|-------|-------|
|                              | DAY   | NIGHT | TOTAL |
| Events                       | 20    | 9     | 29    |
| Complaints/Comments          | 21    | 10    | 31    |
| Operations (Ops)             | 8,531 | 257   | 8,788 |
| %Events/Ops                  | 0.2%  | 3.5%  | 0.3%  |
| Complaints/Comments & Events | 1.1   | 1.1   | 1.1   |
| % Complaints/Comments / Ops  | 0.2%  | 3.3%  | 0.4%  |

| NIGHT OPERATIONS         |       |     |
|--------------------------|-------|-----|
| Air Ambulance (AA)       | J     | 0   |
| EMS                      | H     | 15  |
| Sheriff's Office         | H     | 23  |
| Mosquito Control         | H     | 0   |
| Mosquito Control         | P     | 0   |
| <b>Public Service</b>    | J,H,P | 38  |
| Air Carrier & GA [Other] | H,P   | 154 |
| Jet Operations           | J     | 65  |
| <b>Night Ops - Total</b> | J,H,P | 257 |

| RESTRICTIONS                      |  | Violations | Letters |
|-----------------------------------|--|------------|---------|
| <b>Mandatory Restriction (MR)</b> |  |            |         |
| Runups: Maintenance               |  | 0          | 0       |
| Jet Stage 1 day & night Ops       |  | 0          | 0       |
| Jet Stage 2 day & night Ops       |  | 0          | 0       |
| <b>Voluntary Restriction (VR)</b> |  |            |         |
| Jet Stage 3 night Ops             |  | 3          | 3       |

## **RECURRING NOISE MONITORING PROGRAM RESULTS OCTOBER 1 – DECEMBER 31, 2002**

The purpose of this program is to conduct recurring monitoring sessions at selected locations in the airport environs to assist the Naples Airport Authority in identifying any changes in patterns and levels of noise exposure from season to season and year to year. Section I provides a basic description of activity noted during the monitoring period. Section II provides an activity comparison between quarters and a seasonal year-to-year comparison. Section III includes the quarterly decibel levels measured each quarter and a map depicting the monitoring locations and results from the most current monitoring period.

This program includes the following goals:

- Provide an objective basis for identifying long-term changes in noise exposure to correlate the changes in activity levels, facilities, airline schedules, airport rules, etc.
- Provide an objective basis for identifying seasonal variation in noise exposure.
- Provide an objective basis for evaluating geographic variation in noise exposure.
- Provide the interested public with useful, understandable, geographically representative information on long-term noise exposure patterns.
- Address the preceding technical objectives in the most efficient manner possible.

Two sound levels, the Day-Night Average Sound Level (DNL) and the background noise level (L90), were calculated for each site during the monitoring period. The DNL represents noise as it occurs over a 24-hour period, adding a 10-decibel penalty to sound events occurring at night between the hours of 10:00 PM and 7:00 AM. This 10-decibel penalty is applied to account for greater sensitivity to nighttime noise, and the fact that the events at night are often perceived to be more intrusive because nighttime ambient noise is less than daytime ambient noise. L90 is a measure of the background noise level, or the quietest level that would be experienced in the absence of most significant noise-producing human activity, or in the absence of any natural noise such as rain, wind, animals or insects.

Additionally, staff spent several hours at six of the seven locations, specifically documenting aircraft operations and determining what other sources produce significant sound levels in the vicinity of the monitors. Every source will contribute to the overall DNL results, as these sources may be louder than aircraft operations. Any type of “exceedance” occurring during these monitoring periods was noted. An exceedance is an event caused by any type of source (car, aircraft, or siren) which triggers the noise monitor to begin recording an event. An exceedance is only recorded if it lasts greater than five (5) seconds, and is louder than the threshold set on the monitor. During this round of monitoring, all monitor thresholds were set at 60 decibels to get as close as possible to the ambient background noise level at each site.

Please note that noise monitoring was resumed at Site #3, the First Presbyterian Church, due to the completion of construction at that facility. However, data comparison between this quarter and the previous quarter, as well as the same period last year will not be available at this time.

## SECTION I – QUARTERLY SITE ACTIVITY SUMMARY

One of the seven sites was not monitored during this quarter due to heavy construction activity within close proximity to the monitoring location. All other locations were monitored for approximately a ten day period, and staff were present at each location at least three times for various periods, noting exceedances, sound exposure levels (SEL) of various types of aircraft and background noise levels. Staff has also been able to provide noise monitor briefings, as well as, information about noise issues at the airport. The following SEL's and overall background noise levels noted in Section III were verified by staff during the on-site visits.

Below is a representative list of Sound Exposure Level (SEL) observations made at three sites.

### **Aircraft Arriving at Airport:**

| SITE / LOCATION                           | AIRCRAFT TYPE          | DECIBEL LEVEL |
|---|------------------------|---------------|
| Village Green / 1 ½ miles SW of airport   | Hawker Jet             | 79.8 decibels |
| Village Green / 1 ½ miles SW of airport   | Citation Jet           | 84.9 decibels |
| Pulling Property / 3/8 mile SW of airport | Gulfstream IV Jet      | 80.8 decibels |
| Pulling Property / 3/8 mile SW of airport | Twin Engine Cessna 402 | 75.0 decibels |
| Pulling Property / 3/8 mile SW of airport | Single Engine Bonanza  | 71.7 decibels |
| Pulling Property / 3/8 mile SW of airport | Single Engine Cherokee | 79.1 decibels |

### **Aircraft Departing Airport:**

| SITE / LOCATION                           | AIRCRAFT TYPE          | DECIBEL LEVEL |
|---|------------------------|---------------|
| Wyndemere / 2 1/4 miles NE of airport     | Single Engine Cherokee | 80.3 decibels |
| Wyndemere / 2 1/4 miles NE of airport     | Single Engine Cessna   | 79.4 decibels |
| Pulling Property / 3/8 mile SW of airport | Single Engine Cherokee | 78.3 decibels |
| Pulling Property / 3/8 mile SW of airport | Citation Jet           | 76.6 decibels |
| Pulling Property / 3/8 mile SW of airport | Lear Jet               | 86.6 decibels |

## SECTION II – SEASONAL AND ANNUAL COMPARISON OF SITES

Noise Monitoring Site Summary Comparison between the Third Quarter of 2002 and the Fourth Quarter of 2002, and a comparison between the same period last year.

A comparison of the five monitoring sites revealed that the DNL increased at two sites and decreased at three sites when compared to last quarter. The DNL increased at three sites and decreased at one site when compared to same period last year. Below is a summary of each site. The changes in background noise are speculative unless staff observed changes in area construction levels, vehicular traffic or other activity. A more complete comparison is now available to compare the same time period on an annual basis, versus a seasonal basis.

The following guidelines may be helpful in interpreting community response to changes in DNL above 55 dB.

| <u>Change in DNL</u> | <u>Community Response</u>                |
|----------------------|--|
| 0 – 2 dB's           | May be noticeable                        |
| 2 – 5 dB's           | Generally noticeable                     |
| Over 5 dB's          | A change in community reaction is likely |

**Site 1** – The DNL appears to have decreased by 0.8 decibels during the Fourth Quarter. When compared to the same period last year the DNL has increased by 1.3 decibels. The background noise at this site has decreased by 0.8 decibels.

**Site 2A** – The DNL at this site was 59.5 decibels, which is an increase of 2.9 decibels when compared to last quarter. The background noise level also increased by 0.8 decibels.

**Site 3** – This site produced a DNL of 55.2 decibels and the background noise level was 45.0 decibels. Noise monitoring for this site just resumed this quarter; therefore comparison between quarters will begin on the next quarterly report.

**Site 4** – The DNL of this site decreased by 2.1 decibels when compared to last quarter. When compared to the same period last year, the DNL has increased by 3.1 decibels. The background noise level for this site has increased by 4.7 decibels when compared to the Fourth Quarter of 2001. Staff was unable to determine why there was such an increase in the background noise level.

**Site 5** – This site produced a DNL of 51.0 decibels. This data is a decrease of 4.5 decibels when compared to last quarter and a decrease of 5.1 decibels when compared to the same period last year. The background noise level at this site has increased by 0.4 decibels when compared to the Fourth Quarter of 2001.

**Site 6** – This site was not monitored due to Livingston Road construction.

**Site 7** – The DNL at this site increased by 3.8 decibels. When compared to the same quarter last year there is an increase of 3.6 decibels. There was a 3.1 decibel increase in background noise at this site when compared to the Fourth Quarter of 2001.

| <b>DNL Comparison</b> |                            |                           |                            |
|-----------------------|----------------------------|---------------------------|----------------------------|
| <b>Site</b>           | <b>Fourth Quarter 2001</b> | <b>Third Quarter 2002</b> | <b>Fourth Quarter 2002</b> |
| 1                     | 55.1 dB                    | 57.2 dB                   | 56.4 dB                    |
| 2A                    | N/A                        | 56.6 dB                   | 59.5 dB                    |
| 3                     | N/A                        | N/A                       | 55.2 dB                    |
| 4                     | 58.1 dB                    | 63.3 dB                   | 61.2 dB                    |
| 5                     | 56.1 dB                    | 55.5 dB                   | 51.0 dB                    |
| 6                     | N/A                        | N/A                       | N/A                        |
| 7                     | 56.5 dB                    | 56.3 dB                   | 60.1 dB                    |



**SECTION III  
NOISE MONITORING SITE SUMMARY**

| SITES  | 4th Quarter       |      | 1st Quarter      |      | 2nd Quarter      |      | 3rd Quarter       |      | 4th Quarter       |      |
|--|-------------------|------|------------------|------|------------------|------|-------------------|------|-------------------|------|
|  | Oct. - Dec., 2001 |      | Jan. - Mar. 2002 |      | Apr. - June 2002 |      | July - Sept. 2002 |      | Oct. - Dec., 2002 |      |
|  | Bkgrnd            | DNL  | Bkgrnd           | DNL  | Bkgrnd           | DNL  | Bkgrnd            | DNL  | Bkgrnd            | DNL  |
| 1 Springwood-East Naples                       | 46.2              | 55.1 | 47               | 57.7 | 47.8             | 58.5 | 47.2              | 57.2 | 46.4              | 56.4 |
| 2A Pulling Property                            | N/A               | N/A  | N/A              | N/A  | N/A              | N/A  | 44.2              | 56.6 | 45                | 59.5 |
| 3 First Presbyterian Church<br>- 6th St. South | N/A               | N/A  | N/A              | N/A  | N/A              | N/A  | N/A               | N/A  | 45                | 55.2 |
| 4 Village Green - 11th<br>Avenue South         | 43.8              | 58.1 | N/A              | 58.4 | 48.7             | 60.9 | 51.6              | 63.3 | 48.5              | 61.2 |
| 5 The Conservancy                              | 43.6              | 56.1 | N/A              | 55.7 | 42.9             | 56.4 | 41.7              | 55.5 | 42.1              | 51   |
| 6 FPL Substation -<br>Livingston / GG Pky.     | N/A               | N/A  | N/A              | N/A  | N/A              | N/A  | N/A               | N/A  | N/A               | N/A  |
| 7 Wyndemere CC                                 | 47                | 56.5 | 46.1             | 56.9 | 47.5             | 57.3 | 45.5              | 56.3 | 48.6              | 60.1 |

**Bkgrnd** - The background noise level or the quietest level that would be experienced in the absence of most significant noise-producing human activity.

**DNL** - Total noise as it occurs over a 24-hour period, adding a 10-decibel penalty to sound events occurring at night between the hours of 10:00 PM and 7:00 AM.