



Below is a summary of data contained in the Third Quarter 2002 Noise Report completed by the Operations Department. This summary includes the months of July, August, and September 2002.

	Compared to Same Period Last Year (July, August, September 2001)
Air Traffic - All Operations	
Commuter	↓ 12%
General Aviation	↓ 4%
Total Operations	↓ 5%
Air Traffic - Nighttime Operations	
Jets (including air ambulances)	↓ 19%
Mosquito Control	↓ 50%
Single/Multi-engine	↑ 21%
Emergency Services Helicopters	↑ 15%
Total Nighttime Operations	↑ 2%
Noise Complaints	
Northeast	↓ 5 complaints from 6 to 1
Northwest	↓ 5 complaints from 5 to 0
Southeast	↓ 1 complaints from 8 to 7
Southwest	↓ 26 complaints from 36 to 10
Overall Comparison	↓ 39 complaints from 59 to 20
Total Complaints This Quarter = 20 complaints	

Total complaints have decreased 66% when compared to the same period last year. Ten (10) different families made 20 complaints during this period, as compared to 35 families making 59 complaints during the same period last year. Three families made 12 calls.

When comparing FY01 to FY02 there was a 30% decrease in noise complaints from 751 in FY01 to 528 complaints in FY02.

Total Operations during Fiscal Year 2002 increased by 492 operations from 138,298 to 138,790. Itinerant operations have decreased 3% from 107,793 to 104,937 and IFR operations have increased by 5% from 38,766 to 40,543 when compared to Fiscal Year 2001.

CITY OF NAPLES AIRPORT AUTHORITY

QUARTERLY NOISE REPORT

NUMBER 23

For the period

July 1, 2002 through September 30, 2002

Prepared by
Airport Operations

TABLE OF CONTENTS

	Page
INTRODUCTION	1
PART I AIRCRAFT OPERATIONS	1
Table I	2
Figure IA	3
Figure IB	4
Table II	5
PART II CITIZEN COMPLAINTS	6
Table III	7
Figure IIA	8
PART III COMPLAINTS BY TIMEFRAME	9
Figure IIIA	9
Figure IIIB	9
PART IV COMPLAINTS BY OPERATIONAL SOURCE	10
Figure IV	10
PART V COMPLAINTS BY OPERATION	11
Figure V	11
SUMMARY	12
Appendix A	Total Aircraft Operations and Complaints
Appendix B	Noise Complaints vs. Number of Households
Appendix C	Noise Complaint / Operations Summary (July/Aug./Sept.)
Appendix D	Recurring Noise Monitoring Program

PART I AIRCRAFT OPERATIONS

INTRODUCTION

This is the twenty-third Quarterly Noise Report prepared by the City of Naples Airport Authority - Airport Operations Department. This report is informational in nature. The data included in this report tracks aircraft operations, noise complaints and noise monitoring results obtained from the five (5) monitoring locations surrounding the airport (Appendix D). All percentages are rounded to the nearest percent.

AIRCRAFT OPERATIONS

Table I, page 2, Airport Traffic Summary, contains aircraft movement data from FAA Form 7230-1 and after hour statistics recorded by the City of Naples Airport Authority Security Officers. Naples Air Traffic Control Tower is operational from 6:00 AM through 10:00 PM. A single movement represents either one arrival or one departure by the indicated aircraft category.

This Quarter Compared to Previous Quarter

This quarter's commuter traffic, compared to the previous quarter, has decreased by 37%. General aviation activity has decreased by 6%. Total traffic decreased by 9%, from 33,589 operations to 30,434. The daily average for the Third Quarter was 330 operations.

This Quarter Compared to the Same Period One Year Ago

Compared to the same period last year, commuter traffic has decreased 12%, and general aviation air traffic has decreased 4%. Total air traffic operations decreased by 5% from 32,040 operations to 30,434.

Fiscal Year 2001 Compared to Fiscal Year 2002

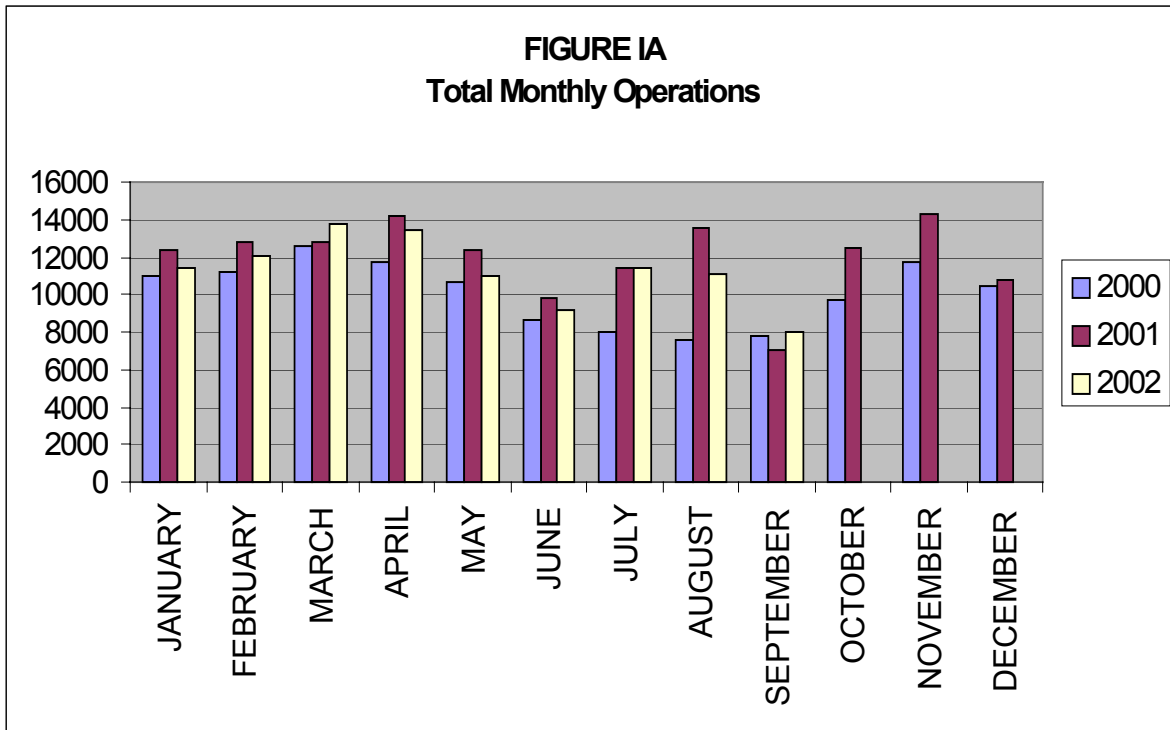
FY02 Operations have increased by 492 operations from 138,298 to 138,790 when compared to FY01. Itinerant operations decreased 3%, from 107,793 to 104,937 operations, and local operations increased 11%, from 30,505 to 33,853 operations. Itinerant operations accounted for 76% of the total airport operations in FY02. IFR operations increased by 5%, from 38,766 to 40,543.

Table I

**AIRPORT TRAFFIC SUMMARY
Landings and Takeoffs
2001-2002**

YEAR	COMMUTER	GENERAL AVIATION	MILITARY	TOTAL TRAFFIC	DAILY AVERAGE
2001					
JULY	761	10,632	30	11,423	368
AUGUST	856	12,625	45	13,526	436
SEPTEMBER	701	6,352	38	7,091	236
TOTALS FOR 3rd QUARTER	2,318	29,609	113	32,040	348
OCTOBER	1,100	11,387	16	12,503	403
NOVEMBER	1,404	12,924	6	14,334	478
DECEMBER	1,141	9,612	13	10,766	347
TOTALS FOR 4th QUARTER	3,645	33,923	35	37,603	347
2002					
JANUARY	1,553	9,819	32	11,404	368
FEBRUARY	1,606	10,373	28	12,007	429
MARCH	1,711	11,975	67	13,753	444
TOTALS FOR 1st QUARTER	4,870	32,167	127	37,164	408
APRIL	1,385	12,031	43	13,459	449
MAY	1,163	9,763	18	10,944	353
JUNE	706	8,453	27	9,186	306
TOTALS FOR 2nd QUARTER	3,254	30,247	88	33,589	414
JULY	675	10,654	53	11,382	367
AUGUST	761	10,254	28	11,043	356
SEPTEMBER	614	7,394	1	8,009	267
TOTALS FOR 3rd QUARTER	2,050	28,302	82	30,434	330
TOTALS FOR FY 2002	13,819	124,639	332	138,790	375

Figure IA below illustrates the airport's month-by-month total operational levels for 2000, 2001 and 2002.



There was a 5% decrease in overall airport operations during the Third Quarter of 2002, when compared to the same period in 2001.

Night Time Operations

Figure IB, below, illustrates the airport's total nighttime (10:00 PM – 7:00 AM) operational levels for 2000, 2001 and 2002.

Total nighttime operations have increased 2% in the Third Quarter of 2002 when compared to the Third Quarter 2001 statistics. Jet operations occurring at night decreased from 122 operations during the 3rd Quarter of 2001 to 99 during the 3rd Quarter of 2002.

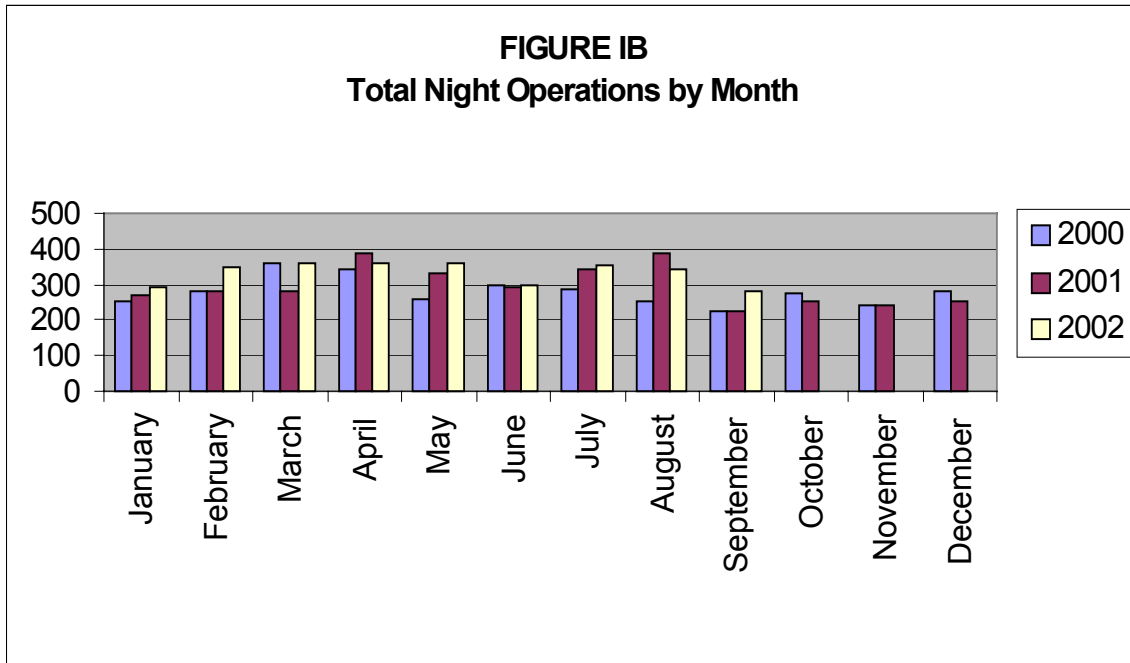


Table II, below, summarizes the types of nighttime operations occurring at the airport during the previous five quarters. Nighttime operations include voluntary curfew hours (10:00 PM through 7:00 AM). Reported nighttime operations have increased by 21 total operations when compared to the same time last year.

Nighttime jet operations (non-air ambulance) decreased by fourteen (14) operations when compared to the Third Quarter of 2001. The number of air ambulance operations has decreased by nine (9) operations. Single and multi-engine aircraft operations have increased by 21%. The Public service operations represent 21% of the activity occurring at night.

Table II
Quarterly Air Traffic Nighttime Operations Summary – by Calendar Year

Activity	3 rd 2001	4 th 2001	1 st 2002	2 nd 2002	3 rd 2002
Jets	113	204	285	176	99
Jet – Air Ambulance	9	0	5	0	0
Single & Multi-engine	562	427	587	663	678
Mosquito Control Aircraft	175	15	10	62	88
Helicopters	98	95	116	113	113
Collier S.O., EMS & Coast Guard					
Total	957	741	887	1,014	978

PART II CITIZEN COMPLAINTS

Table III, on page 7, is a summary of citizen noise complaints separated according to four geographical areas (Quadrants). Below is a sample representation of the neighborhoods in each Quadrant. Every neighborhood in the area is not included in this list, although it is included in the Quadrant total.

Northeast Quadrant - Briarwood, Coconut River Estates, Golden Gate, Grey Oaks, Hawks Ridge, Wyndemere, and surrounding northeast areas.

Northwest Quadrant - Bears Paw, Coconut River Estates, Coquina Sands, Country Club of Naples, Lake Forest, Lake Park, Park Shore, Ridge Lakes, River Estates, River Reach, Sun Terrace, Moorings, Wilderness, and surrounding northwest areas.

Southwest Quadrant - Aqualane Shores, Old Naples, Port Royal, Royal Harbor, and surrounding southwest neighborhoods.

Southeast Quadrant - Brookside, Coconut Grove, Flamingo Estates, Foxfire, Kings Lake, Lakewood, Naples Gardens, Rock Creek Campground, The Glades, and surrounding neighborhoods.

The analysis will include the specific nature of the complaint, whether it was an arriving or departing aircraft or an overflight. Complaints relative to nighttime Mosquito Control operations, Air Ambulance Flights, Sheriff's Office and EMS helicopter operations are included in this report.

This Quarter Compared to Previous Quarter

This quarter's noise complaints, compared to the previous quarter, have decreased from 91 to 20. Complaints received from neighborhoods to the northeast of the airport decreased by 7, from the northwest decreased by 7, from the southeast decreased by 3 and from the southwest decreased by 56.

This Quarter Compared to the Same Period One Year Ago

Compared to the same period last year, the total number of complaints decreased by 39 calls. Complaints received from neighborhoods to the northeast of the airport have decreased by 5, from the northwest decreased by 5, from the southeast decreased by 1 and from the southwest decreased by 26. Total complaints received have decreased from 59 to 20.

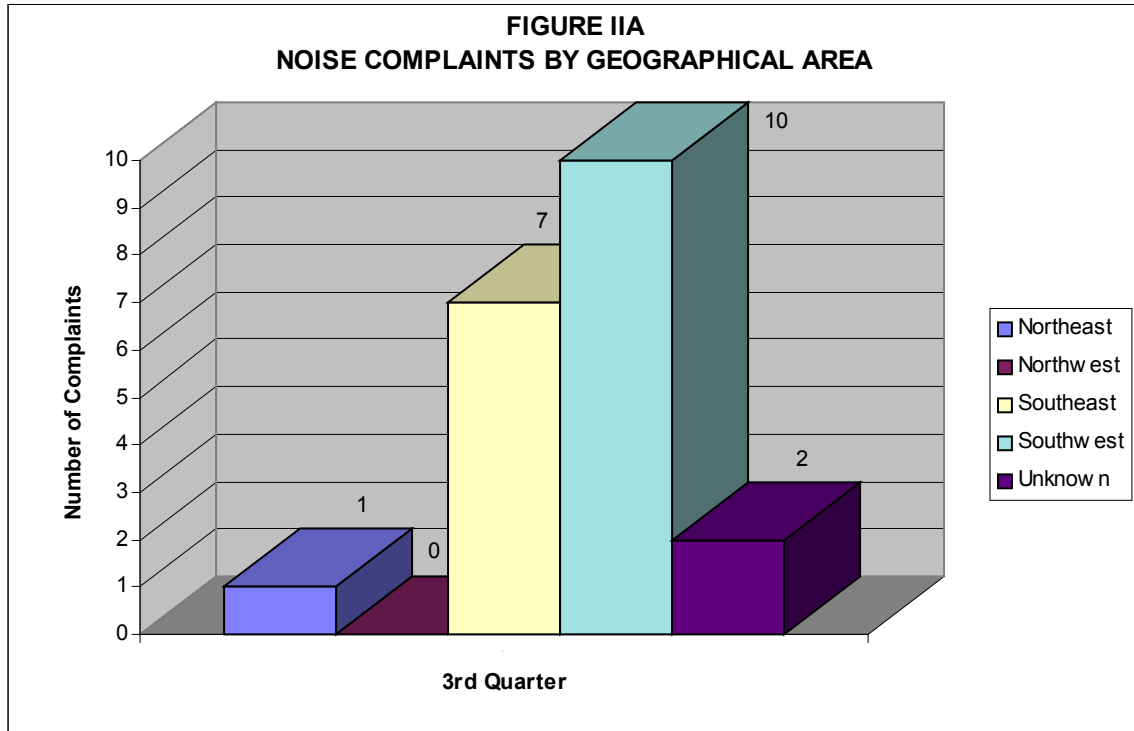
Fiscal Year 2001 Compared to Fiscal Year 2002

Complaints have decreased 30% in Fiscal Year 2002, from 751 in FY01 to 528 in FY02.

Table III
AIRPORT NOISE COMPLAINT SUMMARY
2001-2002

YEAR	Northeast	Northwest	Southeast	Southwest	Unknown Location	Monthly Total
2001						
JULY	2	1		11	2	16
AUGUST		3	3	10	1	17
SEPTEMBER	4	1	5	15	1	26
TOTALS FOR 3rd QUARTER	6	5	8	36	4	59
2001						
OCTOBER	-	1	3	30	-	34
NOVEMBER	20	8	11	72	-	111
DECEMBER	4	2	3	22	-	31
TOTALS FOR 4th QUARTER	24	11	17	124	-	176
2002						
JANUARY	7	6	14	77	1	105
FEBRUARY	10	9	5	61	3	88
MARCH	5	7	2	34	-	48
TOTALS FOR 1st QUARTER	22	22	21	172	4	241
2002						
APRIL	8	4	6	49	-	67
MAY	-	2	1	13	-	16
JUNE	-	1	3	4	-	8
TOTALS FOR 2nd QUARTER	8	7	10	66	-	91
2002						
JULY				5	1	6
AUGUST	1	-	4	2		7
SEPTEMBER			3	3	1	7
TOTALS FOR 3rd QUARTER	1	-	7	10	2	20
TOTALS FOR FY 2002	55	40	55	372	6	528

Figure IIA, below, graphically compares the noise complaints received by geographical areas based on data collected during the Third Quarter of 2002. Total complaints for this quarter have decreased 78% from the previous quarter, and decreased 66% when compared to the same period one year ago.



PART III COMPLAINTS BY TIMEFRAME

Figure IIIA, below, depicts noise complaints for the Third Quarter according to the time of the single event. Most complaints were received at 10:00 AM (20%) and between 9:00 PM and 11:00 PM (40%). Forty-five percent (45%) of the total complaints were received during the voluntary curfew hours.

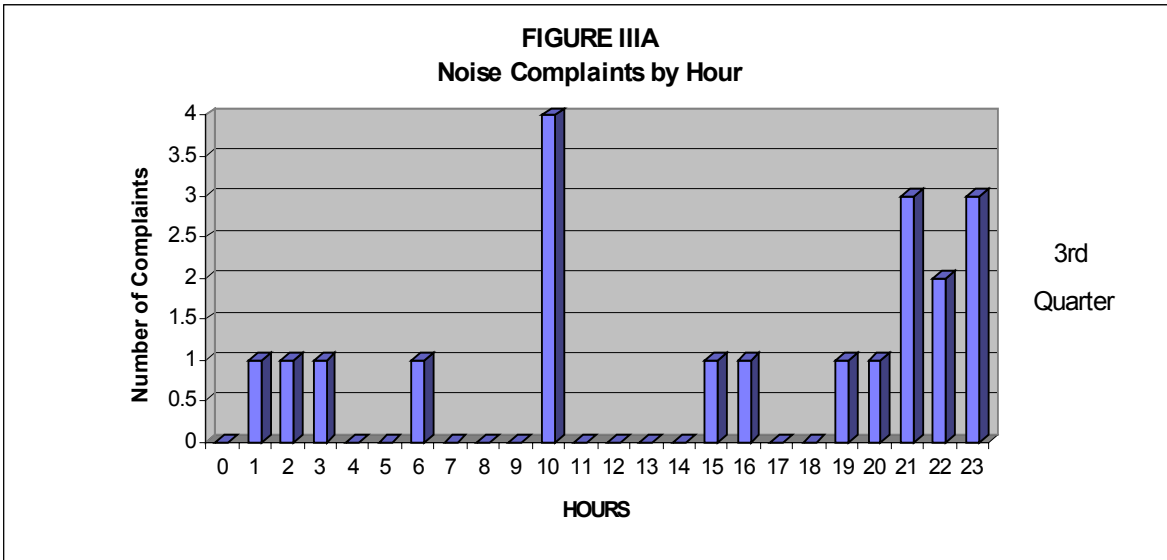
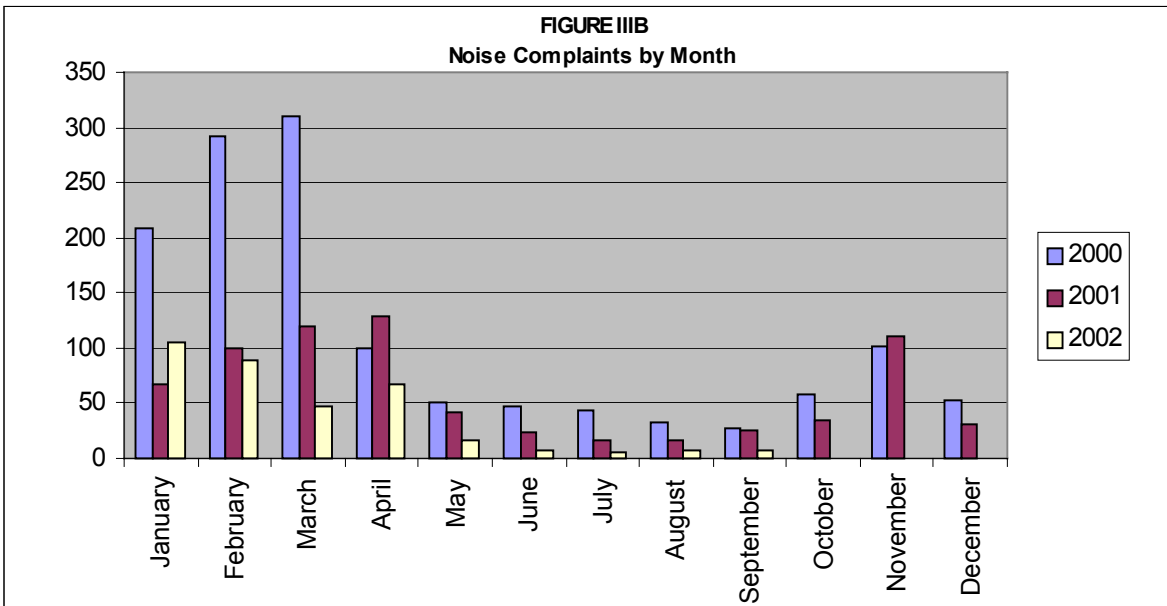
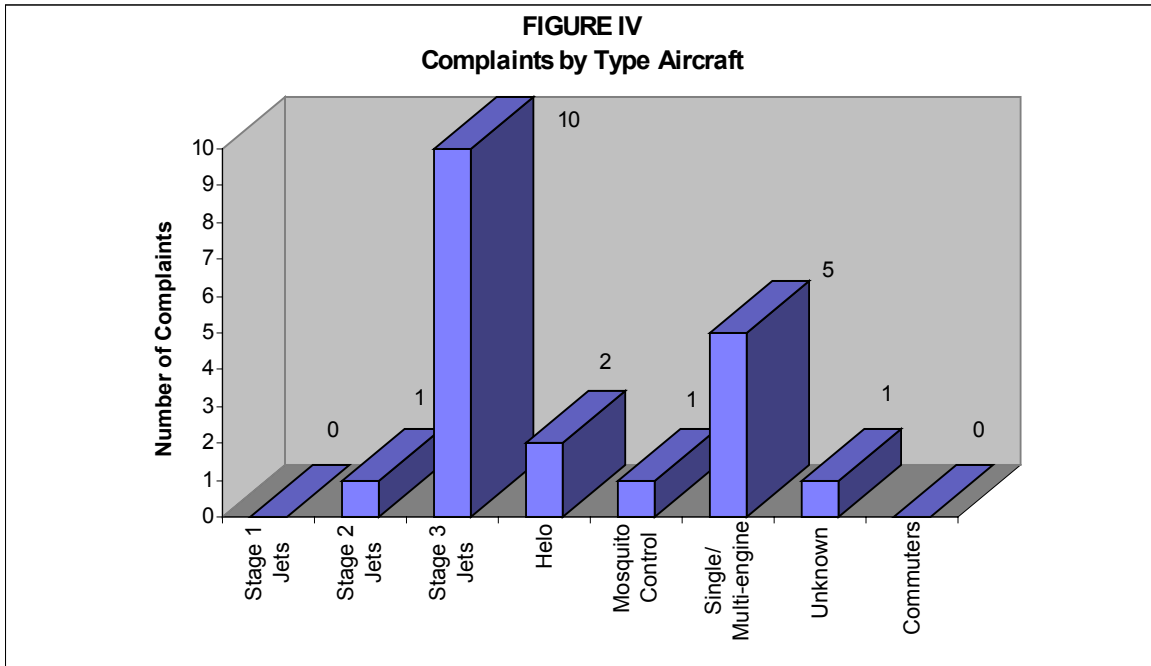


Figure IIIB below, illustrates the airport's complaint volume for 2000, 2001 and 2002.



PART IV COMPLAINTS BY OPERATIONAL SOURCE

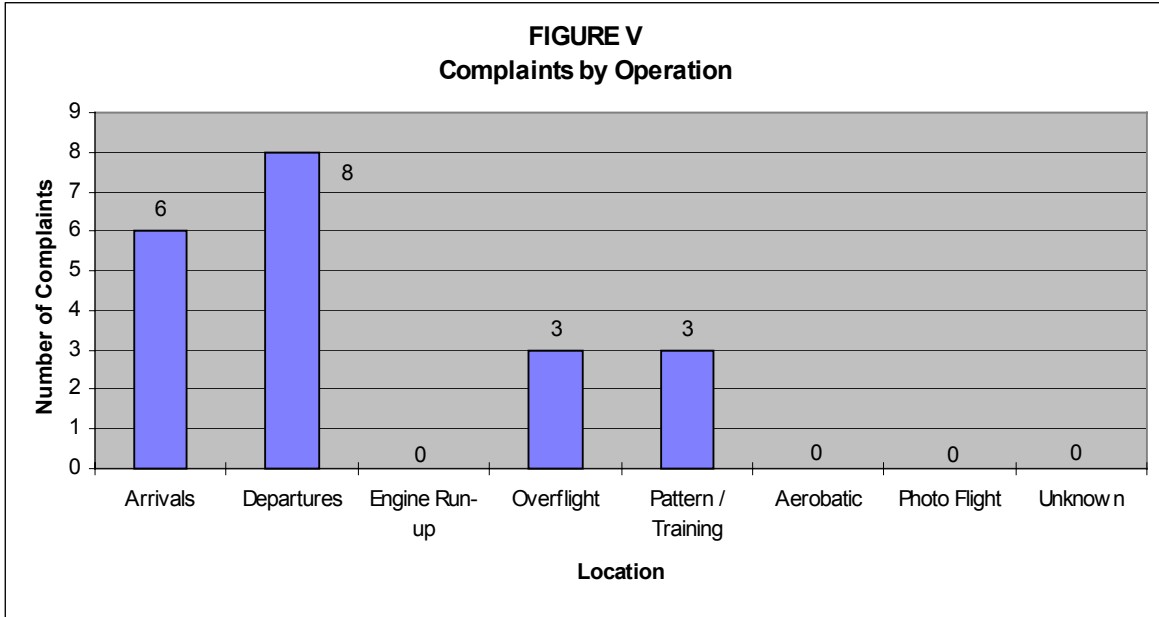
Figure IV below, indicates what types of aircraft the complainants were calling about. When comparing the last three (3) quarters noise complaints, it appears the complaints have remained relatively the same in regards to jet aircraft operations.



Staff did not receive any complaints from Stage 2 or Stage 3 Air Ambulances during the Third Quarter of 2002.

PART V
COMPLAINTS BY OPERATION

Figure V, below, shows the operational source of the noise complaints from the Third Quarter of 2002.



SUMMARY

Air Traffic

Compared to the previous quarter, commuter traffic has decreased 37%, general aviation traffic has decreased by 6%, and total air traffic decreased by 9%. Compared to the same period one year ago, commuter traffic decreased 12%, general aviation operations have decreased by 4%, and total traffic decreased 5%.

Twelve percent of the total nighttime operations were attributed to Sheriff's Office or Emergency Services helicopters, and jet aircraft operations have decreased by 19% when compared to same period last year. Single and multi-engine operations have increased by 21%, while Mosquito Control operations have decreased by 50%. Overall nighttime operations have increased by 2% when compared to last year.

Noise Complaints

Compared to the previous quarter, noise complaints have decreased from 91 to 20. Southwest Quadrant neighborhoods generated the most complaints during the Third Quarter of 2002, with a total of 10 complaints. Other areas generated the following number of complaints: Northeast-1, Northwest-0, Southeast-7 and 2 were unknown.

Noise Complaints by Family

Ten (10) different families made 20 complaints to the Noise Abatement Office during the Third Quarter of 2002. Three families made 12 calls, or 60% of the total complaints.

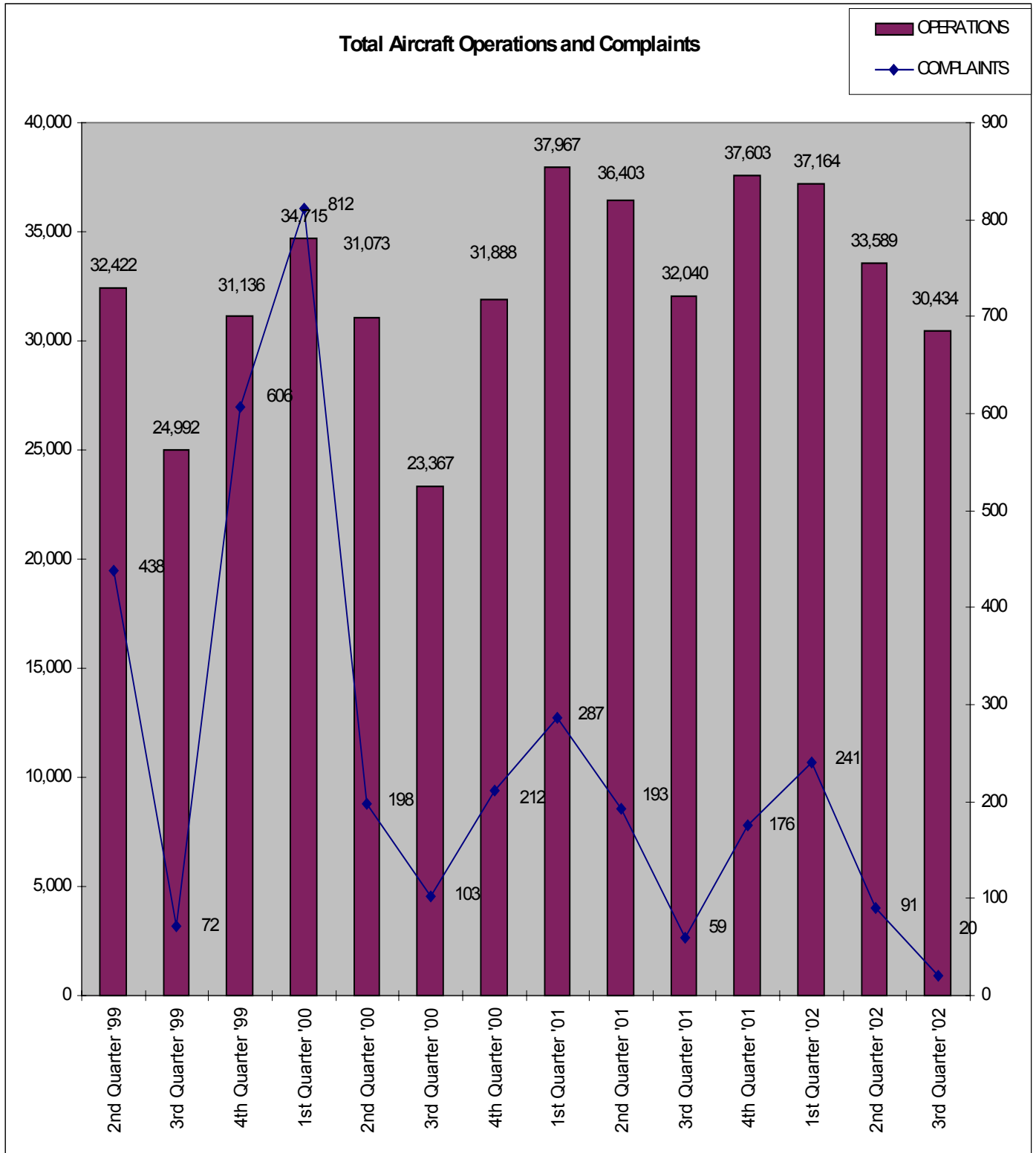
Air Traffic - Fiscal Year 2001 Compared to Fiscal Year 2002

FY02 Operations have increased by 492 operations from 138,298 to 138,790 when compared to FY01. Itinerant operations decreased 3%, from 107,793 to 104,937 operations, and local operations increased 11%, from 30,505 to 33,853 operations. Itinerant operations accounted for 76% of the total airport operations in FY02. IFR operations increased by 5%, from 38,766 to 40,543.

Complaints - Fiscal Year 2001 Compared to Fiscal Year 2002

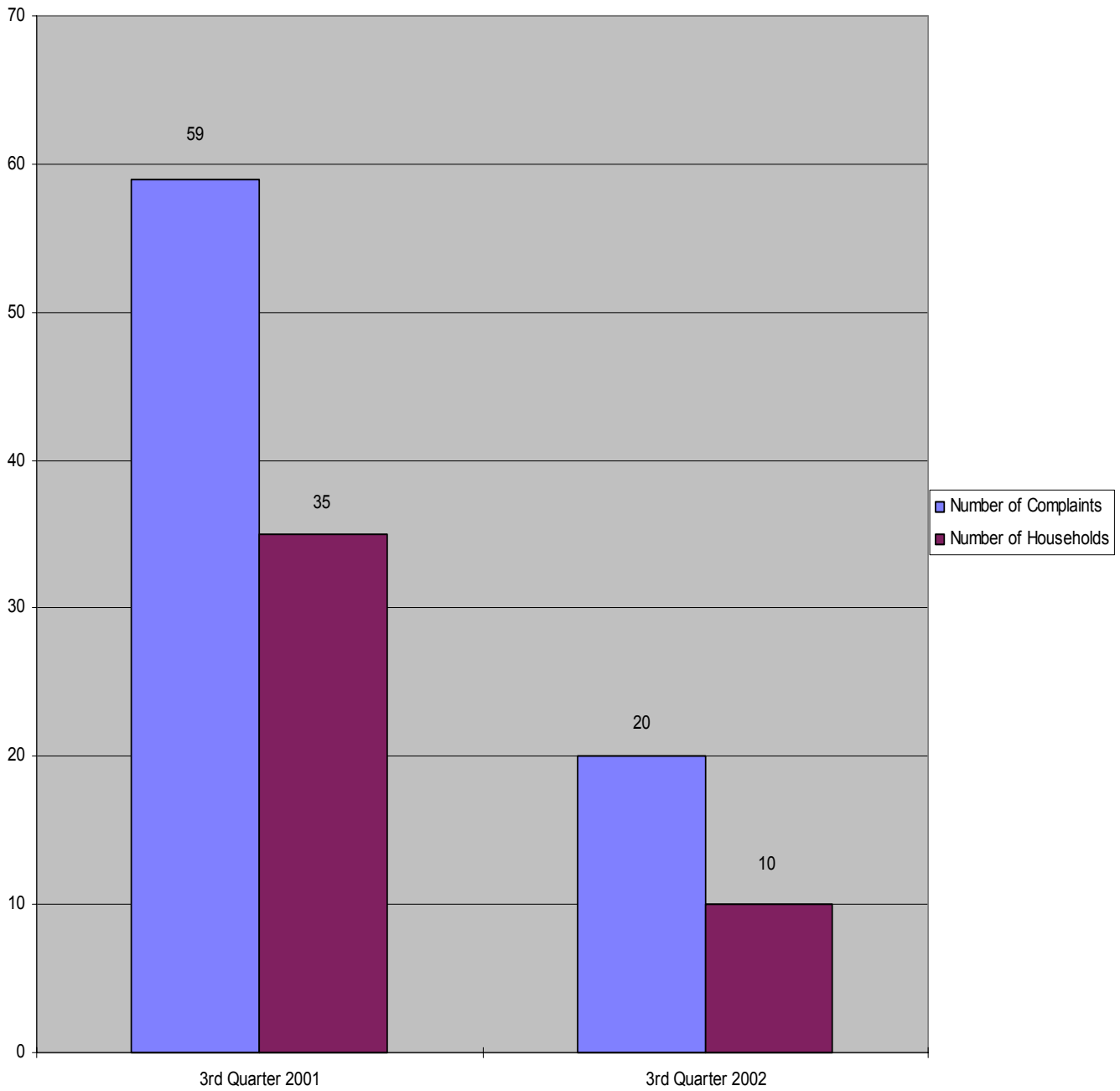
Complaints have decreased 30% in Fiscal Year 2002, from 751 in FY01 to 528 in FY02.

Appendix A



Appendix B

3rd QUARTER
Number of Complaints vs. Number of Households



Appendix C

NOISE COMPLAINTS/COMMENTS & OPERATIONS SUMMARY

MONTH: July 2002																	
DATE	7 AM - 10 PM							10 PM - 7 AM							TOTAL OPERATIONS		
	JET+HELO+PROP			JET OPS				JET+HELO+PROP			JET OPS						
	EVENTS	COMPLAINTS / COMMENTS	OPERATIONS	TOTAL STAGE 1 OPERATIONS	TOTAL STAGE 2 OPERATIONS	AA STAGE 1 (EXEMPT)	AA STAGE 2 (EXEMPT)	AA STAGE 3 OPERATIONS	EVENTS	COMPLAINTS / COMMENTS	OPERATIONS	TOTAL STAGE 1 OPERATIONS	TOTAL STAGE 2 OPERATIONS	AA STAGE 1 (EXEMPT)		AA STAGE 2 (EXEMPT)	AA STAGE 3 OPERATIONS
Mon-01			345							15							360
Tues-02			396							8						2	404
Wed-03	1	1	455							13						2	468
Thur-04			390							25							415
Fri-05			352							14							366
Sat-06			244							9							253
Sun-07			227							5						1	232
Mon-08	1	1	178		2					8						3	186
Tues-09			282		1					5							287
Wed-10			239							8							247
Thur-11			416		1					24						1	440
Fri-12			438							8						1	446
Sat-13			318							5							323
Sun-14			388							14						2	402
Mon-15			396							10						2	406
Tues-16	1	1	444							23						2	467
Wed-17			278		1					12							290
Thur-18			403		1					5							408
Fri-19			527						2	2	10					4	537
Sat-20			395							10							405
Sun-21			282							5						1	287
Mon-22			345							6							351
Tues-23			362							4						2	366
Wed-24			320		1					21						4	341
Thur-25			277						1	1	12					1	289
Fri-26			444		1					8						1	452
Sat-27			412							9						1	421
Sun-28			302							12							314
Mon-29			323		2					16						1	339
Tues-30			394							16						2	410
Wed - 31			456							14							470
TOTALS	3	3	11,028	0	10	0	2	6	3	3	354	0	0	0	0	33	11,382

COMPLAINTS / COMMENTS				NIGHT OPERATIONS		RESTRICTIONS		Violations	Letters
	DAY	NIGHT	TOTAL						
Events	3	3	6	Air Ambulance (AA)	J	0			
Complaints/Comments	3	3	6	EMS	H	25	Mandatory Restriction (MR)		
Operations (Ops)	11,028	354	11,382	Sheriff's Office	H	19	Runups: Maintenance	0	0
%Events/Ops	7.0%	0.8%	0.1%	Mosquito Control	H	25	Jet Stage 1 day & night Ops	0	0
				Mosquito Control	P	22	Jet Stage 2 day & night Ops	0	0
				Public Service	J,H,P	91			
Complaints/Comments & Events	10	10	10	Air Carrier & GA [Other]	H,P	230	Voluntary Restriction (VR)		
% Complaints/Comments / Ops	0.0%	0.8%	0.1%	Jet Operations	J	33	Jet Stage 3 night Ops	2	2
				Night Ops - Total	J,H,P	354			

Appendix C

NOISE COMPLAINTS/COMMENTS & OPERATIONS SUMMARY

MONTH: August 2002																		
DATE	7 AM - 10 PM						10 PM - 7 AM						TOTAL OPERATIONS					
	JET+HELO+PROP			JET OPS			JET+HELO+PROP			JET OPS								
	EVENTS	COMPLAINTS / COMMENTS	OPERATIONS	TOTAL STAGE 1 OPERATIONS	TOTAL STAGE 2 OPERATIONS	AA STAGE 1 (EXEMPT)	AA STAGE 2 (EXEMPT)	AA STAGE 3 OPERATIONS	EVENTS	COMPLAINTS / COMMENTS	OPERATIONS	TOTAL STAGE 1 OPERATIONS		TOTAL STAGE 2 OPERATIONS	AA STAGE 1 (EXEMPT)	AA STAGE 2 (EXEMPT)	AA STAGE 3 OPERATIONS	STAGE 3 OPERATIONS
Thu-01			528							14							542	
Fri-02			517							14						1	531	
Sat-03			303							8							311	
Sun-04			260							13							273	
Mon-05			313					1	1	20							333	
Tue-06			327							8						1	335	
Wed-07	1	1	254							11							265	
Thu-08			431							20						1	451	
Fri-09			417							12							429	
Sat-10			277							7							284	
Sun-11			263							7						1	270	
Mon-12			415							9						1	424	
Tue-13			348							8						3	356	
Wed-14			326							5						2	331	
Thu-15	1	1	407							18						3	425	
Fri-16	1	1	338		1					11						3	349	
Sat-17			304		1					6							310	
Sun-18			267						1	1	11					2	278	
Mon-19			352							16						1	368	
Tue-20			360							7							367	
Wed-21			468							15						1	483	
Thu-22			405							20						4	425	
Fri-23			391							15							406	
Sat-24			396							13						1	409	
Sun-25			220							7						1	227	
Mon-26			222							7						2	229	
Tue-27			288							4						2	292	
Wed-28			367							7						1	374	
Thu-29	1	1	329						1	1	10					1	339	
Fri-30			323							10						1	333	
Sat-31			284							10						2	294	
TOTALS	4	4	10,700	0	2	0	2	6	3	3	343	0	0	0	0	0	35	11,043

COMPLAINTS / COMMENTS			
	DAY	NIGHT	TOTAL
Events	4	3	7
Complaints/Comments	4	3	7
Operations (Ops)	10,700	343	11,043
%Events/Dps	7.0%	0.9%	0.1%
Complaints/Comments & Events	10	10	10
% Complaints/Comments / Ops	0.0%	0.9%	0.1%

NIGHT OPERATIONS		
Air Ambulance (AA)	J	0
EMS	H	14
Sheriff's Office	H	29
Mosquito Control	H	9
Mosquito Control	P	8
Public Service	J,H,P	60
Air Carrier & GA [Other]	H,P	248
Jet Operations	J	35
Night Ops - Total	J,H,P	343

RESTRICTIONS		Violations	Letters
Mandatory Restriction (MR)			
Runups: Maintenance		0	0
Jet Stage 1 day & night Ops		0	0
Jet Stage 2 day & night Ops		0	0
Voluntary Restriction (VR)			
Jet Stage 3 night Ops		3	1

Appendix C

NOISE COMPLAINTS/COMMENTS & OPERATIONS SUMMARY

MONTH: September 2002														TOTAL																
DATE	7 AM - 10 PM									10 PM - 7 AM									OPERATIONS											
	JET+HELO+PROP			JET OPS						JET+HELO+PROP			JET OPS																	
	EVENTS	COMPLAINTS / COMMENTS	OPERATIONS	TOTAL STAGE 1 OPERATIONS	TOTAL STAGE 2 OPERATIONS	AA STAGE 1 (EXEMPT)	AA STAGE 2 (EXEMPT)	AA STAGE 3 OPERATIONS	EVENTS	COMPLAINTS / COMMENTS	OPERATIONS	TOTAL STAGE 1 OPERATIONS	TOTAL STAGE 2 OPERATIONS	AA STAGE 1 (EXEMPT)	AA STAGE 2 (EXEMPT)	AA STAGE 3 OPERATIONS	STAGE 3 OPERATIONS													
Sun-01			180															10										1	190	
Mon-02			256							2	2	30																		286
Tue-03			285																											287
Wed-04			392																									2		397
Thu-05			353																											363
Fri-06			327																											335
Sat-07			370																											379
Sun-08			309																											326
Mon-09			313																											317
Tue-10			335																											343
Wed-11			202																											209
Thu-12			224																											229
Fri-13	1	1	291																											299
Sat-14			275																											284
Sun-15			233																											239
Mon-16			247																											258
Tue-17			180																											188
Wed-18			316																											333
Thu-19			217																											231
Fri-20	2	2	191																											195
Sat-21			221																											231
Sun-22			227																											236
Mon-23			99																											107
Tue-24			210																											226
Wed-25			215																											218
Thu-26			217																											230
Fri-27			255																											265
Sat-28			227																											232
Sun-29			256																											269
Mon-30	1	1	305																											307
TOTALS	4	4	7,728	0	0	0	2	10	3	3	281	0	0	0	0	0	0	0	0	0	0	0	0	0	0	0	0	0	0	8,009

COMPLAINTS / COMMENTS			
	DAY	NIGHT	TOTAL
Events	4	3	7
Complaints/Comments	4	3	7
Operations (Ops)	7,728	281	8,009
%Events/Ops	7.0%	1.1%	0.1%
Complaints/Comments & Events	10	10	10
% Complaints/Comments / Ops	0.1%	1.1%	0.1%

NIGHT OPERATIONS		
Air Ambulance (AA)	J	0
EMS	H	14
Sheriff's Office	H	12
Mosquito Control	H	11
Mosquito Control	P	13
Public Service	J,H,P	50
Air Carrier & GA [Other]	H,P	200
Jet Operations	J	31
Night Ops - Total	J,H,P	281

RESTRICTIONS		Violations	Letters
Mandatory Restriction (MR)			
Runups: Maintenance		0	0
Jet Stage 1 day & night Ops		0	0
Jet Stage 2 day & night Ops		0	0
Voluntary Restriction (VR)			
Jet Stage 3 night Ops		0	0

Appendix D

RECURRING NOISE MONITORING PROGRAM RESULTS JULY 1 – SEPTEMBER 30, 2002

The purpose of this program is to conduct recurring monitoring sessions at selected locations in the airport environs to assist the Naples Airport Authority in identifying any changes in patterns and levels of noise exposure from season to season and year to year. Section I provides a basic description of activity noted during the monitoring period. Section II provides an activity comparison between quarters and a seasonal year-to-year comparison. Section III includes the quarterly decibel levels measured each quarter and a map depicting the monitoring locations and results from the most current monitoring period.

This program includes the following goals:

- Provide an objective basis for identifying long-term changes in noise exposure to correlate the changes in activity levels, facilities, airline schedules, airport rules, etc.
- Provide an objective basis for identifying seasonal variation in noise exposure.
- Provide an objective basis for evaluating geographic variation in noise exposure.
- Provide the interested public with useful, understandable, geographically representative information on long-term noise exposure patterns.
- Address the preceding technical objectives in the most efficient manner possible.

Two sound levels, the Day-Night Average Sound Level (DNL) and the background noise level (L90), were calculated for each site during the monitoring period. The DNL represents noise as it occurs over a 24-hour period, adding a 10-decibel penalty to sound events occurring at night between the hours of 10:00 PM and 7:00 AM. This 10-decibel penalty is applied to account for greater sensitivity to nighttime noise, and the fact that the events at night are often perceived to be more intrusive because nighttime ambient noise is less than daytime ambient noise. L90 is a measure of the background noise level, or the quietest level that would be experienced in the absence of most significant noise-producing human activity, or in the absence of any natural noise such as rain, wind, animals or insects.

Additionally, staff spent several hours at five of the seven locations, specifically documenting aircraft operations and determining what other sources produce significant sound levels in the vicinity of the monitors. Every source will contribute to the overall DNL results, as these sources may be louder than aircraft operations. Any type of “exceedance” occurring during these monitoring periods was noted. An exceedance is an event caused by any type of source (car, aircraft, or siren) which triggers the noise monitor to begin recording an event. An exceedance is only recorded if it lasts greater than five (5) seconds, and is louder than the threshold set on the monitor. During this round of monitoring, all monitor thresholds were set at 60 decibels to get as close as possible to the ambient background noise level at each site.

Please note that due to the recently adopted noise zoning lines by the Naples City Council, the Association from Mariner’s Cove (Site 2) has decided that they no longer wish to have a noise monitor placed on their property. Staff was able to find an alternate site at the Pulling Property (Site 2A) which is approximately 1,500 feet north of the site

at Mariner's Cove. Therefore, data comparison for this new site is unavailable at this time.

SECTION I – QUARTERLY SITE ACTIVITY SUMMARY

Two of the seven sites were not monitored during this quarter due to heavy construction activity within close proximity to the monitoring locations. All other locations were monitored for approximately a ten day period, and staff were present at each location at least three times for various periods, noting exceedances, sound exposure levels (SEL) of various types of aircraft and background noise levels. Staff has also been able to provide noise monitor briefings, as well as, information about noise issues at the airport. The following SEL's and overall background noise levels noted in Section III were verified by staff during the on-site visits.

Below is a representative list of Sound Exposure Level (SEL) observations made at two sites. Due to the decrease in aircraft operations during this time of the year, staff observed very few operations.

Aircraft Arriving at Airport:

SITE / LOCATION	AIRCRAFT TYPE	DECIBEL LEVEL
Village Green / 1 ½ miles SW of airport	Single Engine Tomahawk	78.7 decibels
Village Green / 1 ½ miles SW of airport	Citation Jet	84.7 decibels

Aircraft Departing Airport:

SITE / LOCATION	AIRCRAFT TYPE	DECIBEL LEVEL
Wyndemere / 2 ¼ miles NE of airport	Single Engine Cherokee	73.0 decibels

SECTION II – SEASONAL AND ANNUAL COMPARISON OF SITES

Noise Monitoring Site Summary Comparison between the Second Quarter of 2002 and the Third Quarter of 2002, and a comparison between the same period last year.

A comparison of the four monitoring sites revealed that the DNL increased at one site and decreased at three sites when compared to last quarter, as well as when compared to same period last year. Below is a summary of each site. The changes in background noise are speculative unless staff observed changes in area construction levels, vehicular traffic or other activity. A more complete comparison is now available to compare the same time period on an annual basis, versus a seasonal basis.

The following guidelines may be helpful in interpreting community response to changes in DNL above 55 dB.

<u>Change in DNL</u>	<u>Community Response</u>
0 – 2 dB's	May be noticeable
2 – 5 dB's	Generally noticeable
Over 5 dB's	A change in community reaction is likely

Site 1 – The DNL appears to have decreased by 1.3 decibels during the Third Quarter. When compared to the same period last year the DNL has decreased by 0.9 decibels. The background noise at this site has decreased by 0.7 decibels.

Site 2A – The DNL at this site was 56.6 decibels and the background noise level was 44.2 decibels. Monitoring for this new site just started this quarter, therefore comparison between quarters will begin on next quarterly report.

Site 3 – This site was not monitored due to construction.

Site 4 – The DNL of this site increased by 2.4 decibels when compared to last quarter. When compared to the same period last year, the DNL has increased by 1.2 decibels. The background noise level for this site has increased by 4.0 decibels when compared to the Third Quarter of 2001. Staff was unable to determine why there was such an increase in the background noise level.

Site 5 – This site produced a DNL of 55.5 decibels. This data is a decrease of 0.9 decibels when compared to last quarter and a decrease of 5.7 decibels when compared to the same period last year. The background noise level at this site has decreased by 8.7 decibels when compared to the Second Quarter of 2001. The decrease in the DNL and background noise level may have been caused by the lack of thunderstorms during this quarter.

Site 6 – This site was not monitored due to Livingston Road construction.

Site 7 – The DNL at this site decreased by 1.0 decibels. When compared to the same quarter last year there is a decrease of 2.8 decibels. There was a 0.5 decibel decrease in background noise at this site when compared to the Third Quarter of 2001.

DNL Comparison			
Site	Third Quarter 2001	Second Quarter 2002	Third Quarter 2002
1	58.1 dB	58.5 dB	57.2 dB
2A	N/A	N/A	56.6 dB
3	N/A	N/A	N/A
4	62.1 dB	60.9 dB	63.3 dB
5	61.2 dB	56.4 dB	55.5 dB
6	N/A	N/A	N/A
7	59.1 dB	57.3 dB	56.3 dB

Fiscal Year DNL Average Comparison			
Site	Fiscal Year 2001	Fiscal Year 2002	+ - Difference
1	57.2 dB	57.1 dB	- 0.1 dB
2A	N/A	N/A	N/A
3	N/A	N/A	N/A
4	59.0 dB	60.2 dB	+ 1.2 dB
5	54.0 dB	55.9 dB	+ 1.9 dB
6	N/A	N/A	N/A
7	57.9 dB	56.8 dB	- 1.1 dB

Fiscal Year Background Noise Level Average Comparison			
Site	Fiscal Year 2001	Fiscal Year 2002	+ - Difference
1	47.1 dB	47.1 dB	0.0 dB
2A	N/A	N/A	N/A
3	N/A	N/A	N/A
4	46.6 dB	48.0 dB	+ 1.4 dB
5	43.1 dB	42.7 dB	- 0.4 dB
6	N/A	N/A	N/A
7	46.3 dB	46.5 dB	+ 0.2 dB

NOISE MONITORING SITE SUMMARY

SITES	3rd Quarter		4th Quarter		1st Quarter		2nd Quarter		3rd Quarter		
	July - Sept. 2001		Oct. - Dec., 2001		Jan. - Mar. 2002		Apr. - June 2002		July - Sept. 2002		
	Bkgrnd	DNL	Bkgrnd	DNL	Bkgrnd	DNL	Bkgrnd	DNL	Bkgrnd	DNL	
1	Springwood-East Naples	47.9	58.1	46.2	55.1	47	57.7	47.8	58.5	47.2	57.2
2A	Pulling Property	N/A	N/A	N/A	N/A	N/A	N/A	N/A	N/A	44.2	56.6
3	First Presbyterian Church - 6th St. South	N/A	N/A	N/A	N/A	N/A	N/A	N/A	N/A	N/A	N/A
4	Village Green - 11th Avenue South	47.6	62.1	43.8	58.1	N/A	58.4	48.7	60.9	51.6	63.3
5	The Conservancy	50.4	61.2	43.6	56.1	N/A	55.7	42.9	56.4	41.7	55.5
6	FPL Substation - Livingston / GG Pky.	N/A	N/A	N/A	N/A	N/A	N/A	N/A	N/A	N/A	N/A
7	Wyndemere CC	46	59.1	47	56.5	46.1	56.9	47.5	57.3	45.5	56.3