



Below is a summary of data contained in the First Quarter 2002 Noise Report completed by the Operations Department. This summary includes the months of January, February, and March 2002.

	Compared to Same Period Last Year (January, February, March 2001)
Air Traffic - All Operations	
Commuter	↓ 2%
General Aviation	↓ 2%
Total Operations	↓ 2%
Air Traffic - Nighttime Operations	
Jets (including air ambulances)	↑ 24%
Mosquito Control	↑ 100%
Single/Multi-engine	↑ 15%
Emergency Services Helicopters	↑ 33%
Total Nighttime Operations	↑ 7%
Noise Complaints	
Northeast	↑ 3 complaints from 19 to 22
Northwest	↓ 13 complaints from 35 to 22
Southeast	↓ 15 complaints from 36 to 21
Southwest	↓ 21 complaints from 193 to 172
Overall Comparison	↓ 46 complaints from 287 to 241
Total Complaints This Quarter = 241 complaints	

Total complaints have decreased 16% when compared to the same period last year. Seventy-seven (77) different families made 241 complaints during this period, as compared to 118 families making 287 complaints during the same period last year. Twelve families made 132 calls.

Sixty-four percent (64%) of complaints received were about jet departures.

CITY OF NAPLES AIRPORT AUTHORITY

QUARTERLY NOISE REPORT

NUMBER 21

For the period

January 1, 2002 through March 31, 2002

Prepared by
Airport Operations

TABLE OF CONTENTS

	Page
INTRODUCTION	1
PART I AIRCRAFT OPERATIONS	1
Table I Airport Traffic Summary	2
Figure IA Total Monthly Operations	3
Figure IB Total Night Operations by Month	4
Table II Quarterly Air Traffic Nighttime Operations Summary	5
PART II CITIZEN COMPLAINTS	6
Table III Airport Noise Complaint Summary	7
Figure IIA Noise Complaints by Geographical Area	8
PART III COMPLAINTS BY TIMEFRAME	9
Figure IIIA Noise Complaints by Hour	9
Figure IIIB Noise Complaints by Month	9
PART IV COMPLAINTS BY OPERATIONAL SOURCE	10
Figure IV Complaints by Type Aircraft	10
PART V COMPLAINTS BY OPERATION	11
Figure V Complaints by Operations	11
SUMMARY	12
Appendix A Total Aircraft Operations and Complaints	
Appendix B Noise Complaints vs. Number of Households	
Appendix C Noise Complaint / Operations Summary (Jan./Feb./March)	
Appendix D Recurring Noise Monitoring Program	

PART I AIRCRAFT OPERATIONS

INTRODUCTION

This is the twenty-first Quarterly Noise Report prepared by the City of Naples Airport Authority - Airport Operations Department. This report is informational in nature. The data included in this report tracks aircraft operations, noise complaints and noise monitoring results obtained from the five (5) monitoring locations surrounding the airport (Appendix D). All percentages are rounded to the nearest percent.

AIRCRAFT OPERATIONS

Table I, page 2, Airport Traffic Summary, contains aircraft movement data from FAA Form 7230-1 and after hour statistics recorded by the City of Naples Airport Authority Security Officers. Naples Air Traffic Control Tower is operational from 6:00 AM through 10:00 PM. A single movement represents either one arrival or one departure by the indicated aircraft category.

This Quarter Compared to Previous Quarter

This quarter's commuter traffic, compared to the previous quarter, has increased by 34%. General aviation activity has decreased by 5%. Total traffic decreased by 1%, from 37,603 operations to 37,164. The daily average for the Fourth Quarter was 414 operations.

This Quarter Compared to the Same Period One Year Ago

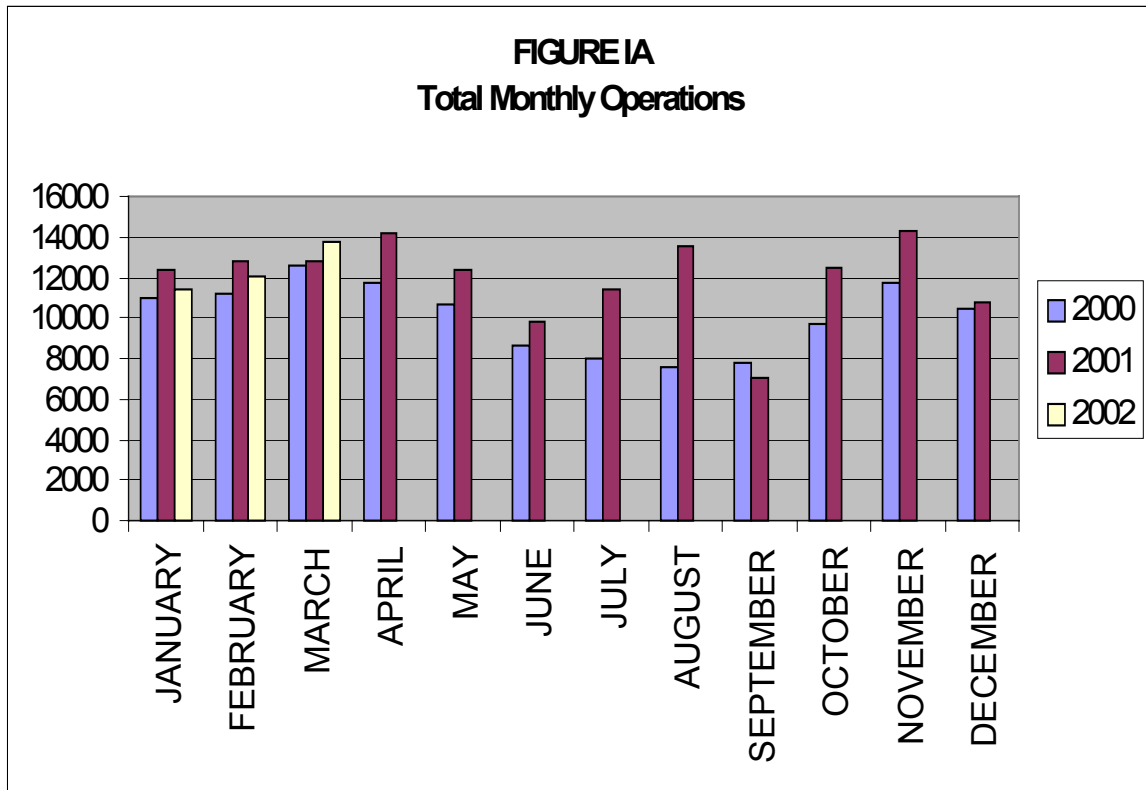
Compared to the same period last year, commuter traffic has decreased 2%, and general aviation air traffic has decreased 2%. Total air traffic operations decreased by 2% from 37,967 operations to 37,164.

Table I

AIRPORT TRAFFIC SUMMARY
Landings and Takeoffs
2001-2002

YEAR	COMMUTER	GENERAL AVIATION	MILITARY	TOTAL TRAFFIC	DAILY AVERAGE
2001					
JANUARY	1,588	10,735	15	12,338	398
FEBRUARY	1,542	11,228	6	12,776	456
MARCH	1,824	11,015	14	12,853	415
TOTALS FOR 1st QUARTER	4,954	32,978	35	37,967	413
2001					
APRIL	1,564	12,643	14	14,221	475
MAY	1,141	11,258	21	12,420	400
JUNE	901	8,852	9	9,762	325
TOTALS FOR 2nd QUARTER	3,606	32,753	44	36,403	400
2001					
JULY	761	10,632	30	11,423	368
AUGUST	856	12,625	45	13,526	436
SEPTEMBER	701	6,352	38	7,091	236
TOTALS FOR 3rd QUARTER	2,318	29,609	113	32,040	347
2001					
OCTOBER	1,100	11,387	16	12,503	403
NOVEMBER	1,404	12,924	6	14,334	478
DECEMBER	1,141	9,612	13	10,766	347
TOTALS FOR 4th QUARTER	3,645	33,923	35	37,603	409
2002					
JANUARY	1,553	9,819	32	11,404	368
FEBRUARY	1,606	10,373	28	12,007	429
MARCH	1,711	11,975	67	13,753	444
TOTALS FOR 1st QUARTER	4,870	32,167	127	37,164	414

Figure IA below illustrates the airport's month-by-month total operational levels for 2000, 2001 and 2002.



There was a 2% decrease in overall airport operations during the First Quarter of 2002, when compared to the same period in 2001.

Night Time Operations

Figure IB, below, illustrates the airport's total nighttime (10:00 PM – 7:00 AM) operational levels for 2000, 2001 and 2002.

Total nighttime operations increased by 7% in the First Quarter of 2002 when compared to the First Quarter 2001 statistics. Jet operations occurring at night increased from 232 operations during the 1st Quarter of 2001 to 285 during the 1st Quarter of 2002.

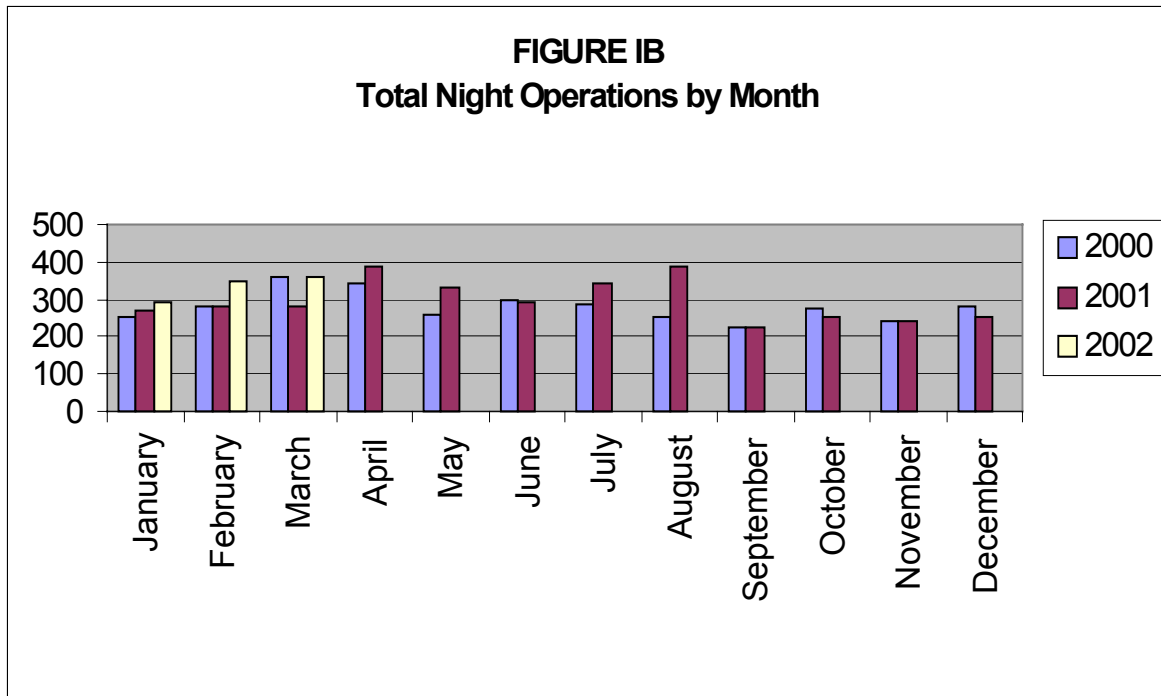


Table II, below, summarizes the types of nighttime operations occurring at the airport during the previous five quarters. Nighttime operations include voluntary curfew hours (10:00 PM through 7:00 AM). Reported nighttime operations have increased by 55 total operations when compared to the same time last year.

Nighttime jet operations (non-air ambulance) increased by fifty-three (53) operations when compared to the First Quarter of 2001. The number of air ambulance operations has increased by four (4) operations. Single and multi-engine aircraft operations have increased by 15%. The Public service operations represent 15% of the activity occurring at night.

Table II
Quarterly Air Traffic Nighttime Operations Summary – by Calendar Year

Activity	1 st 2001	2 nd 2001	3 rd 2001	4 th 2001	1 st 2002
Jets	232	125	113	204	285
Jet – Air Ambulance	1	3	9	0	5
Single & Multi-engine	512	700	562	427	587
Mosquito Control Aircraft	0	55	175	15	10
Helicopters Collier S.O., EMS & Coast Guard	87	127	98	95	116
Total	832	1,010	957	741	887

PART II CITIZEN COMPLAINTS

Table III, on page 7, is a summary of citizen noise complaints separated according to four geographical areas (Quadrants). Below is a sample representation of the neighborhoods in each Quadrant. Every neighborhood in the area is not included in this list, although it is included in the Quadrant total.

Northeast Quadrant - Briarwood, Coconut River Estates, Golden Gate, Grey Oaks, Hawks Ridge, Wyndemere, and surrounding northeast areas.

Northwest Quadrant - Bears Paw, Coconut River Estates, Coquina Sands, Country Club of Naples, Lake Forest, Lake Park, Park Shore, Ridge Lakes, River Estates, River Reach, Sun Terrace, Moorings, Wilderness, and surrounding northwest areas.

Southwest Quadrant - Aqualane Shores, Old Naples, Port Royal, Royal Harbor, and surrounding southwest neighborhoods.

Southeast Quadrant - Brookside, Coconut Grove, Flamingo Estates, Foxfire, Kings Lake, Lakewood, Naples Gardens, Rock Creek Campground, The Glades, and surrounding neighborhoods.

The analysis will include the specific nature of the complaint, whether it was an arriving or departing aircraft or an overflight. Complaints relative to nighttime Mosquito Control operations, Air Ambulance Flights, Sheriff's Office and EMS helicopter operations are included in this report.

This Quarter Compared to Previous Quarter

This quarter's noise complaints, compared to the previous quarter, have increased from 176 to 241. Complaints received from neighborhoods to the northeast of the airport decreased by 2, from the northwest increased by 11, from the southeast increased by 4 and from the southwest increased by 48.

This Quarter Compared to the Same Period One Year Ago

Compared to the same period last year, the total number of complaints decreased by 46 calls. Complaints received from neighborhoods to the northeast of the airport have increased by 3, from the northwest decreased by 13, from the southeast decreased by 15 and from the southwest decreased by 21. Total complaints received have decreased from 287 to 241.

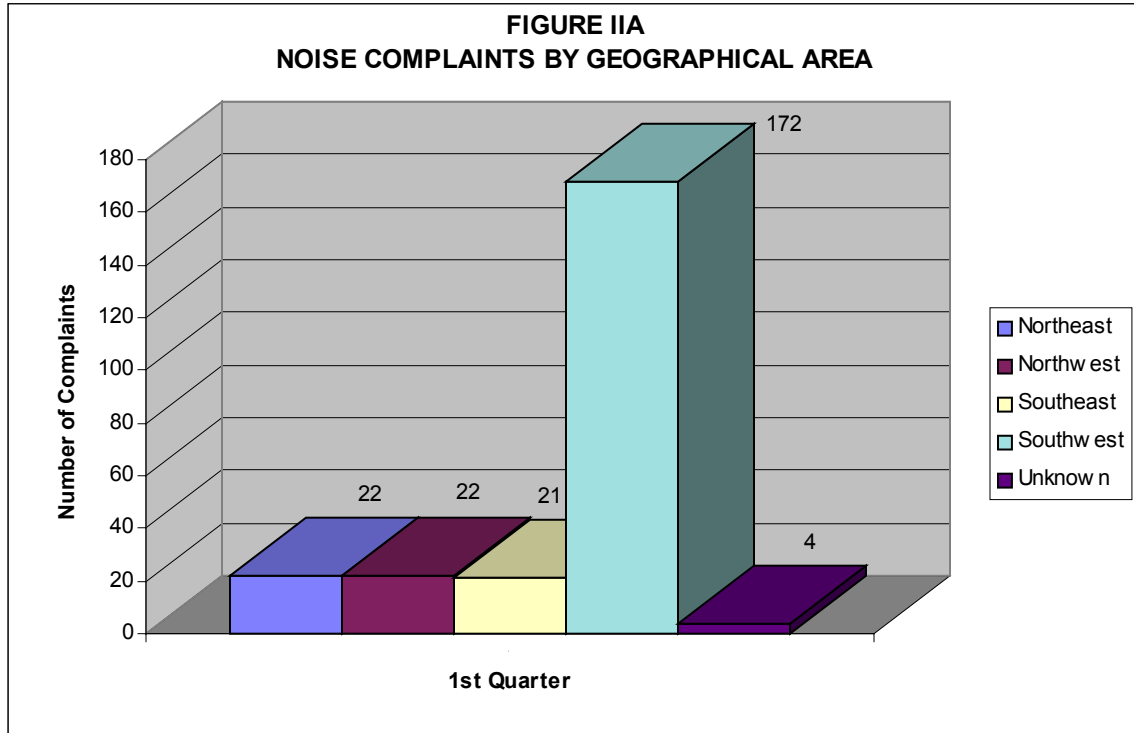
Table III

AIRPORT NOISE COMPLAINT SUMMARY

2001-2002

YEAR	Northeast	Northwest	Southeast	Southwest	Unknown Location	Monthly Total
2001						
JANUARY	2	5	15	45	-	67
FEBRUARY	7	17	7	69	-	100
MARCH	10	13	14	79	4	120
TOTALS FOR 1st QUARTER	19	35	36	193	4	287
APRIL						
APRIL	33	8	11	74	2	128
MAY	8	-	5	29	-	42
JUNE	2	4	7	10	-	23
TOTALS FOR 2nd QUARTER	43	12	23	113	2	193
JULY						
JULY	2	1		11	2	16
AUGUST		3	3	10	1	17
SEPTEMBER	4	1	5	15	1	26
TOTALS FOR 3rd QUARTER	6	5	8	36	4	59
OCTOBER						
OCTOBER	-	1	3	30	-	34
NOVEMBER	20	8	11	72	-	111
DECEMBER	4	2	3	22	-	31
TOTALS FOR 4th QUARTER	24	11	17	124	-	176
2002						
JANUARY	7	6	14	77	1	105
FEBRUARY	10	9	5	61	3	88
MARCH	5	7	2	34	-	48
TOTALS FOR 1st QUARTER	22	22	21	172	4	241
7						

Figure IIA, below, graphically compares the noise complaints received by geographical areas based on data collected during the First Quarter of 2002. Total complaints for this quarter have increased 37% from the previous quarter, and decreased 16% when compared to the same period one year ago.



PART III COMPLAINTS BY TIMEFRAME

Figure IIIA, below, depicts noise complaints for the First Quarter according to the time of the single event. Most complaints were received between 9:00 AM and 7:00 PM (74%). Seventeen percent (17%) of the total complaints were received during the voluntary curfew hours.

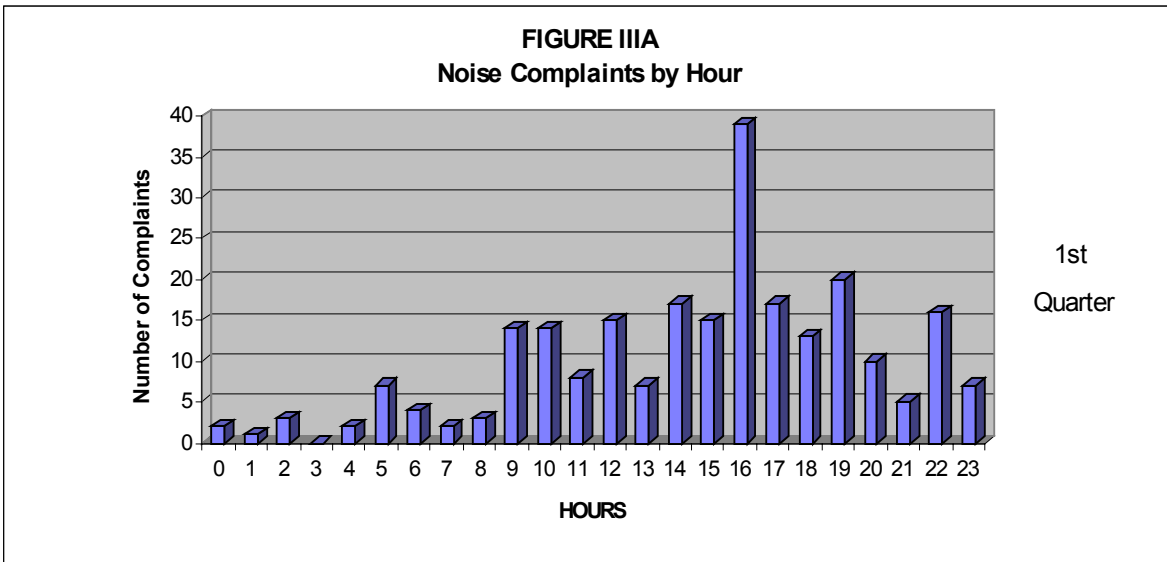
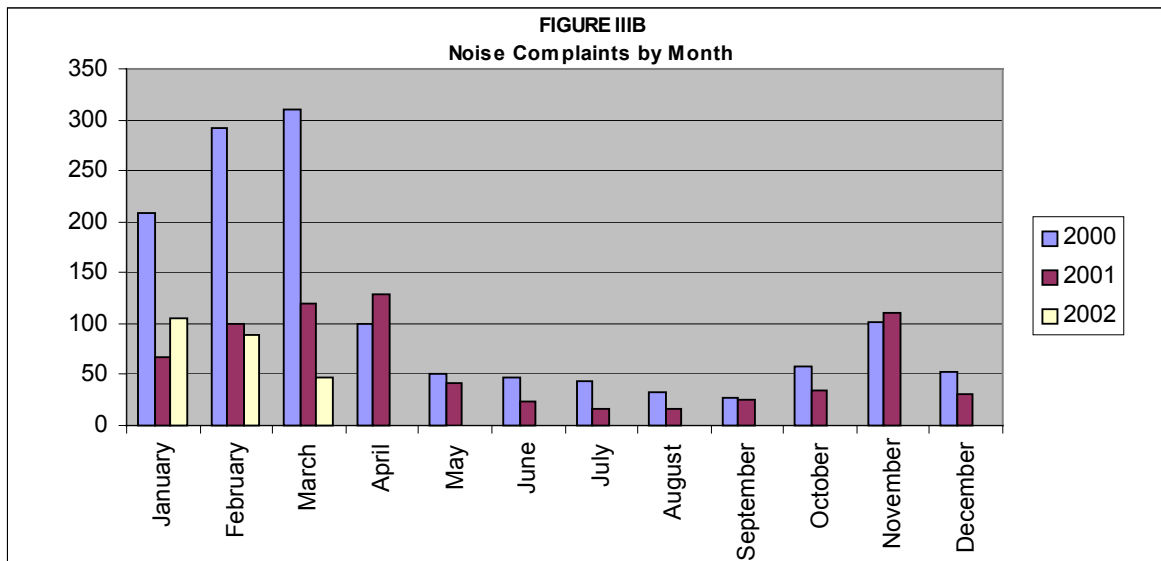
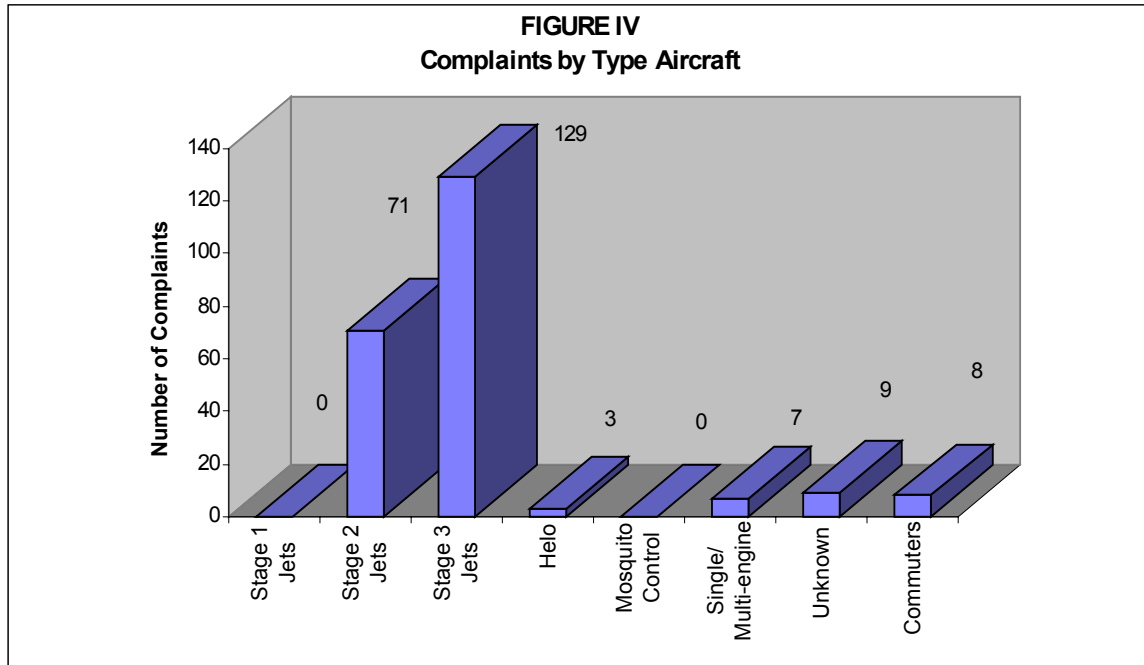


Figure IIIB below, illustrates the airport's complaint volume for 2000, 2001 and 2002.



PART IV COMPLAINTS BY OPERATIONAL SOURCE

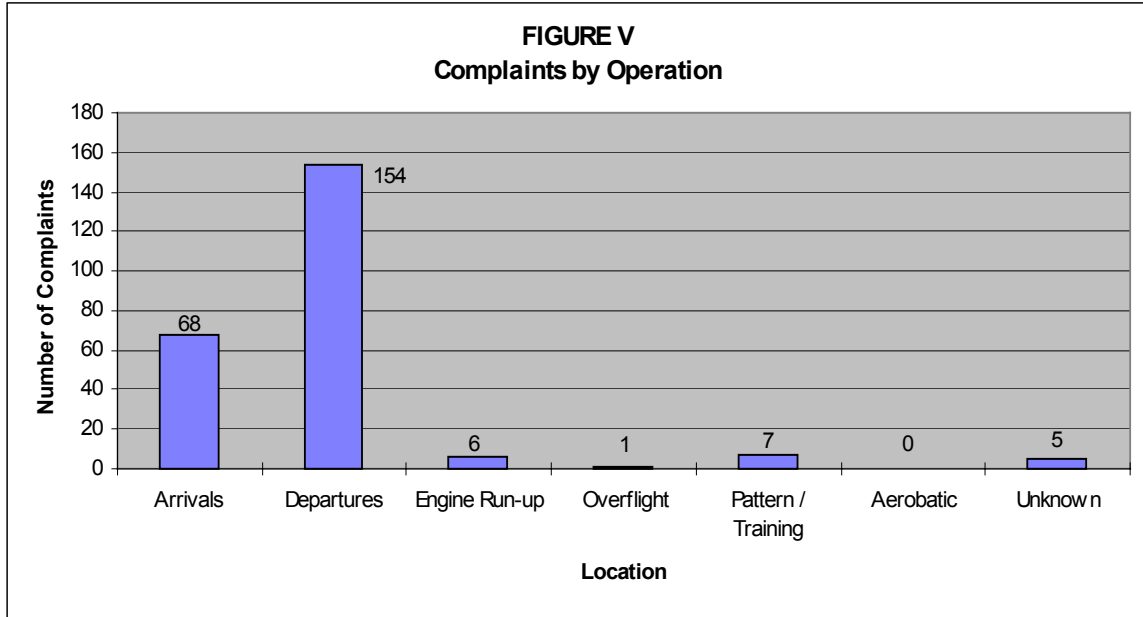
Figure IV below, indicates what types of aircraft the complainants were calling about. When comparing the last three (3) quarters noise complaints, it appears the complaints have remained relatively the same in regards to jet aircraft operations.



Staff received 11 complaints about Stage 2 Air Ambulances and 3 complaints about Stage 3 Air Ambulances.

PART V
COMPLAINTS BY OPERATION

Figure V, below, shows the operational source of the noise complaints from the First Quarter of 2002. Neighborhoods surrounding the airport have typically complained more about departing aircraft than arrivals.



SUMMARY

Air Traffic

Compared to the previous quarter, commuter traffic has increased 34%, general aviation traffic has decreased by 5%, and total air traffic decreased by 1%. Compared to the same period one year ago, commuter traffic decreased 2%, general aviation operations have decreased by 2%, and total traffic decreased 2%.

Thirteen percent of the total nighttime operations were attributed to Sheriff's Office or Emergency Services helicopters, and jet aircraft operations have increased by 24% when compared to same period last year. Single and multi-engine operations have increased by 15%, while Mosquito Control operations have increased by 10 operations. Overall nighttime operations have increased 7% when compared to last year.

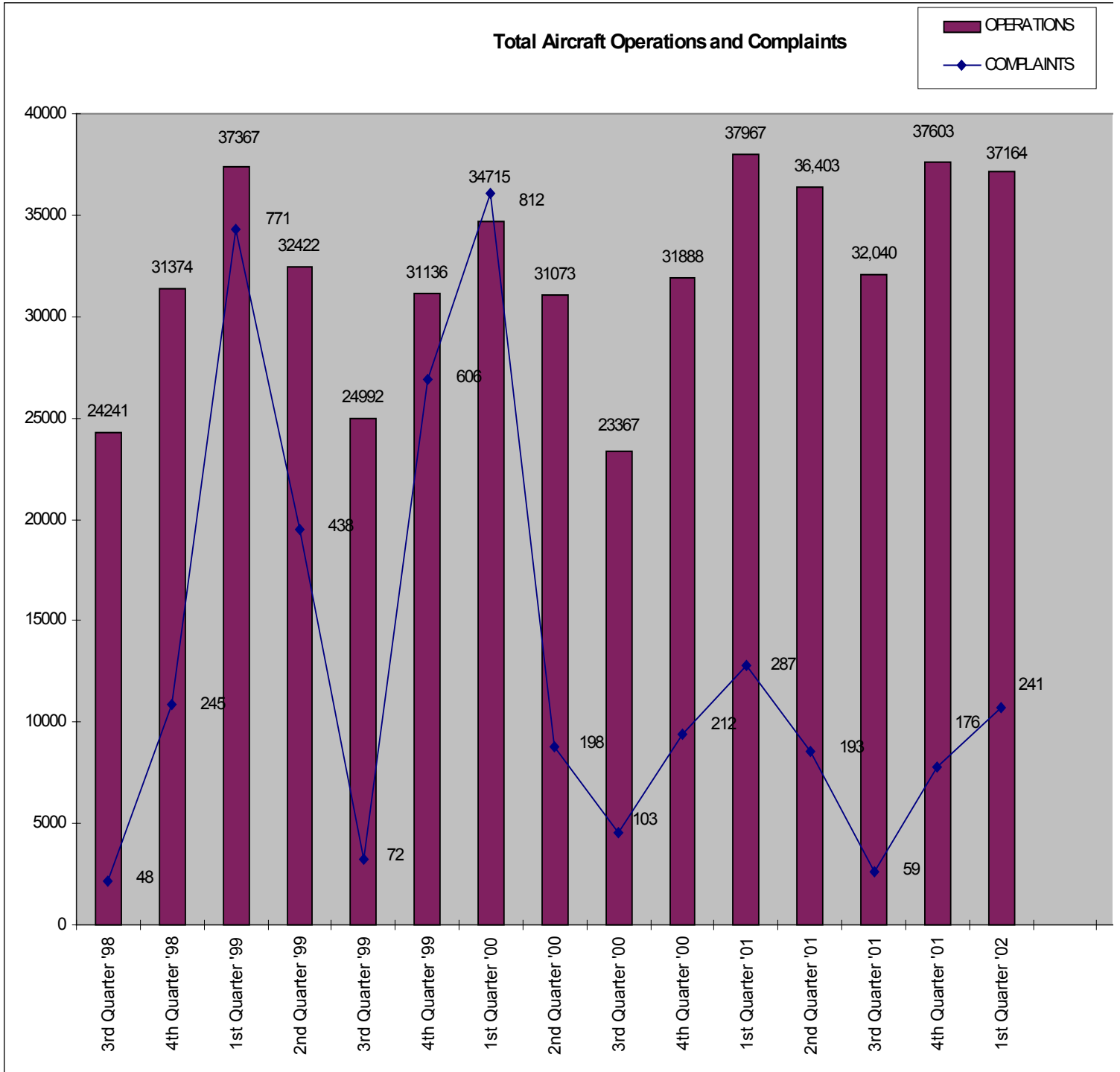
Noise Complaints

Compared to the previous quarter, noise complaints have increased from 176 to 241. Southwest Quadrant neighborhoods generated the most complaints during the First Quarter of 2002, with a total of 172 complaints. Other areas generated the following number of complaints: Northeast-22, Northwest-22 and Southeast-21.

Noise Complaints by Family

Seventy-seven (77) different families made 241 complaints to the Noise Abatement Office during the First Quarter of 2002. Twelve families made 132 calls, or 55% of the total complaints.

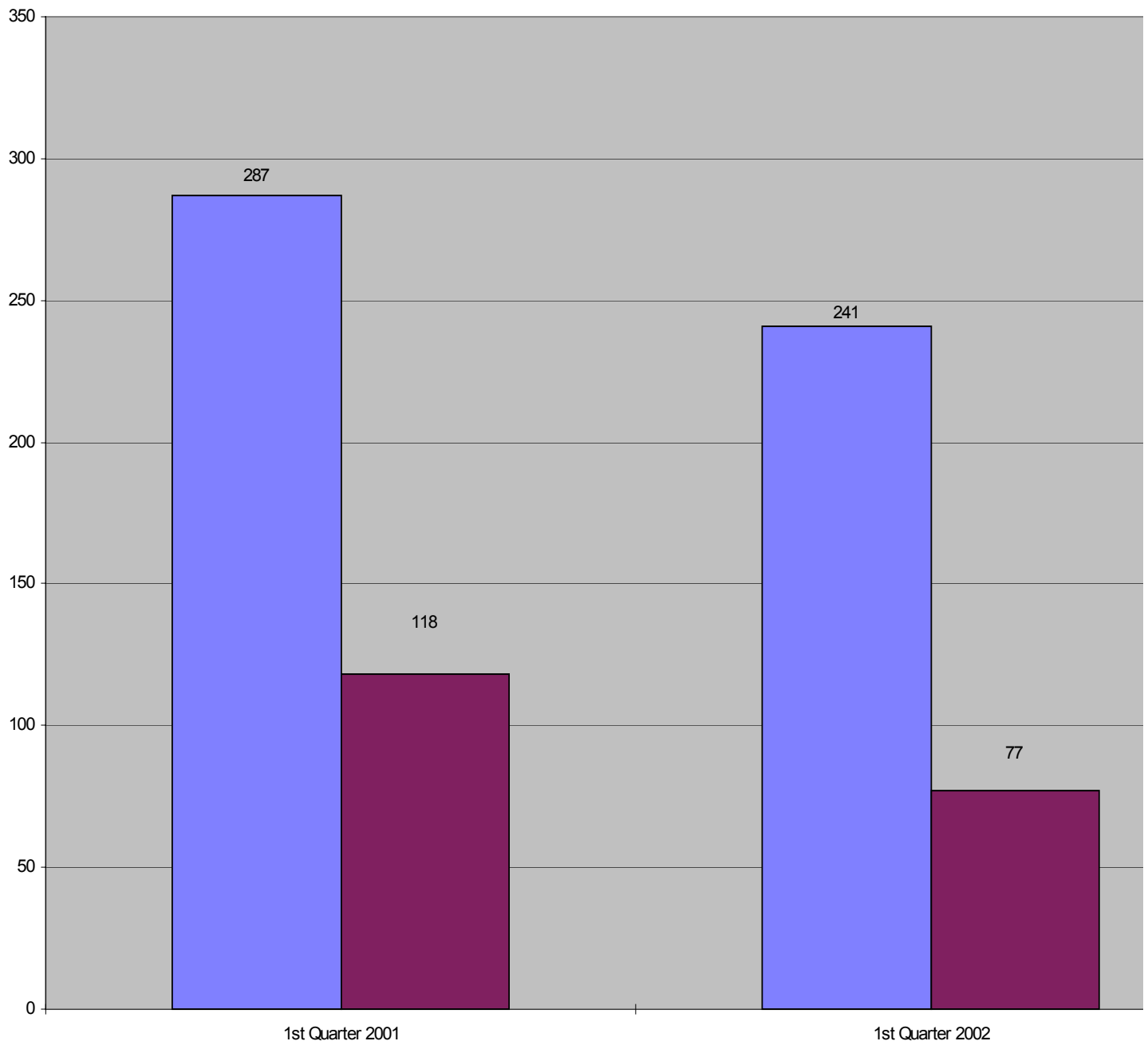
Appendix A



Appendix B

1st QUARTER
Number of Complaints vs. Number of Households

■ Number of Complaints
■ Number of Households



NOISE COMPLAINTS / OPERATIONS SUMMARY

MONTH: January 2002

DATE	7 AM - 10 PM					10 PM - 7 AM					TOTAL OPERATIONS							
	JET-HELO-PROP			JET OPS			JET-HELO-PROP			JET OPS								
	EVENTS	COMPLAINTS	OPERATIONS	TOTAL STAGE 1 OPERATIONS	TOTAL STAGE 2 OPERATIONS	AA STAGE 1 (EXEMPT)	AA STAGE 2 (EXEMPT)	AA STAGE 3 OPERATIONS	EVENTS	COMPLAINTS		OPERATIONS	TOTAL STAGE 1 OPERATIONS	TOTAL STAGE 2 OPERATIONS	AA STAGE 1 (EXEMPT)	AA STAGE 2 (EXEMPT)	AA STAGE 3 OPERATIONS	STAGE 3 OPERATIONS
Tue-01	2	3	284					2			4						2	288
Wed-02	2	2	263		4						6						2	269
Thu-03			268		4						12						4	280
Fri-04			351		1			2			11						1	362
Sat-05			408		1						7						1	415
Sun-06	2	2	233		2						9						3	242
Mon-07			265								7						3	272
Tue-08			424		2						4						2	428
Wed-09	1	1	377		1						9						1	386
Thu-10			444		2			2			11						5	455
Fri-11	4	6	382		3						9							391
Sat-12	1	1	442								12						1	454
Sun-13			305		3						4							309
Mon-14	2	3	183								11						2	194
Tue-15	1	1	246		2					1	7						3	253
Wed-16	3	3	430							1	8				2	2	2	438
Thu-17			327								9						6	336
Fri-18	4	4	463		2						6						1	469
Sat-19			355								5							360
Sun-20	2	2	270		1						6						3	276
Mon-21	7	7	372								3						2	375
Tue-22	5	7	371		4						5						1	376
Wed-23	1	1	416		1						7						1	423
Thu-24	3	3	393		2				4	5	24						5	417
Fri-25	2	2	454		1				1	1	19						2	473
Sat-26	3	5	364		5				1	1	13						5	377
Sun-27	2	2	377		1						5						1	382
Mon-28	3	3	403		2		2		2	3	16						3	419
Tue-29	5	17	381		3		2	2	1	1	11						6	392
Wed-30	5	6	436		4				2	4	17						7	453
Thurs-31	4	4	423		3				1	1	17						10	440
TOTALS	64	85	11,110	0	54	0	4	8	14	20	294	0	0	0	2	2	85	11,404

Page 1

COMPLAINTS				NIGHT OPERATIONS				RESTRICTIONS				
	DAY	NIGHT	TOTAL							Violations	Letters	
Events	64	14	78	Air Ambulance (AA)	J		4					
Complaints	85	20	105	EMS	H		25			Mandatory Restriction (MR)		
Operations (Ops)	11,110	294	11,404	Sheriff's Office	H		12			Runups: Maintenance	0	0
%Events/Ops	7.0%	4.8%	0.7%	Mosquito Control	H		5			Jet Stage 1 day & night Ops	0	0
				Mosquito Control	P		0			Jet Stage 2 day & night Ops	35	0
Complaints/events	1.3	1.4	1.3	Public Service	J,H,P		46			Voluntary Restriction (VR)		
				Air Carrier & GA [Other]	H,P		163			Jet Stage 3 night Ops	8	8
%Complaints/Ops	0.8%	6.8%	0.9%	Jet Operations	J		85					
				Night Ops - Total	J,H,P		294					

NOISE COMMENTS / OPERATIONS SUMMARY

MONTH: February 2002

DATE	7 AM - 10 PM								10 PM - 7 AM								TOTAL OPERATIONS	
	JET-HELO-PROP			JET OPS					JET-HELO-PROP			JET OPS						
	EVENTS	COMMENTS	OPERATIONS	TOTAL STAGE 1 OPERATIONS	TOTAL STAGE 2 OPERATIONS	AA STAGE 1 (EXEMPT)	AA STAGE 2 (EXEMPT)	AA STAGE 3 OPERATIONS	EVENTS	COMMENTS	OPERATIONS	TOTAL STAGE 1 OPERATIONS	TOTAL STAGE 2 OPERATIONS	AA STAGE 1 (EXEMPT)	AA STAGE 2 (EXEMPT)	AA STAGE 3 OPERATIONS		STAGE 3 OPERATIONS
Fri-01	1	1	418		1			2			7							425
Sat-02	1	2	423		1				1	1	15						5	438
Sun-03	4	4	178								11						3	189
Mon-04	2	3	351		2						11						4	362
Tues-05	1	1	442		1						13						2	455
Wed-06	7	7	507		4			2	1	1	7						2	514
Thur-07	2	6	300		4						14						6	314
Fri-08	4	5	557		1						13						3	570
Sat-09			400		2		2				5						2	405
Sun-10	2	3	284								7						3	291
Mon-11	1	1	418		2						15						7	433
Tues-12	1	1	530		2			2	1	1	23						7	553
Wed-13	3	3	438		2			2			15						5	453
Thur-14	3	5	471		2				6	8	27						9	498
Fri-15	3	3	503		2		2				4						1	507
Sat-16	2	2	284								10						4	294
Sun-17	2	2	465		2						7						1	472
Mon-18	3	4	451		12						12						4	463
Tues-19	2	2	471		4						8						4	479
Wed-20	2	2	451								12						4	463
Thurs-21	1	1	518		5						27						10	545
Fri-22			323		2						20						5	343
Sat-23	2	2	189						1	1	7						2	196
Sun-24	1	2	519								15							534
Mon-25	5	9	490		6		2				17						6	507
Tues-26	2	2	451		3			2			9						2	460
Wed-27			316		2						9						2	325
Thurs-28	3	3	508		2		2				11						4	519
																		0
																		0
																		0
TOTALS	60	76	11,656	0	64	0	6	12	10	12	351	0	0	0	0	0	107	12,007

Page 1

COMMENTS	DAY	NIGHT	TOTAL
Events	60	10	70
Comments	76	12	88
Operations (Ops)	11,656	351	12,007
%Events/Ops	7.0%	2.8%	0.6%
Comments/events	1.3	1.2	1.3
%Comments/Ops	0.7%	3.4%	0.7%

NIGHT OPERATIONS		
Air Ambulance (AA)	J	0
EMS	H	19
Sheriff's Office	H	15
Mosquito Control	H	0
Mosquito Control	P	0
Public Service	J,H,P	34
Air Carrier & GA [Other]	H,P	210
Jet Operations	J	107
Night Ops - Total	J,H,P	351

RESTRICTIONS	Violations	Letters
Mandatory Restriction (MR)		
Runups: Maintenance	0	0
Jet Stage 1 day & night Ops	0	0
Jet Stage 2 day & night Ops	37	0
Voluntary Restriction (VR)		
Jet Stage 3 night Ops	7	7

NOISE COMMENTS / OPERATIONS SUMMARY

MONTH: **March 2002**

DATE	7 AM - 10 PM								10 PM - 7 AM								TOTAL OPERATIONS	
	JET-HELO-PROP			JET OPS					JET-HELO-PROP			JET OPS						
	EVENTS	COMMENTS	OPERATIONS	TOTAL STAGE 1 OPERATIONS	TOTAL STAGE 2 OPERATIONS	AA STAGE 1 (EXEMPT)	AA STAGE 2 (EXEMPT)	AA STAGE 3 OPERATIONS	EVENTS	COMMENTS	OPERATIONS	TOTAL STAGE 1 OPERATIONS	TOTAL STAGE 2 OPERATIONS	AA STAGE 1 (EXEMPT)	AA STAGE 2 (EXEMPT)	AA STAGE 3 OPERATIONS		STAGE 3 OPERATIONS
Fri-01			388		2						13					5	401	
Sat-02	1	1	256								9					1	265	
Sun-03	4	4	368								6					5	374	
Mon-04			250								12					5	262	
Tues-05			319								6						325	
Wed-06	1	1	373					4			13	1				3	386	
Thur-07	1	1	339					2	1	1	9					5	348	
Fri-08	1	1	492		1			2	2	2	10					4	502	
Sat-09	1	1	391		2						12					2	403	
Sun-10	3	3	394		1						10					1	404	
Mon-11	0	0	388		1						14					4	402	
Tues-12	1	1	416		2			2			11					2	427	
Wed-13	1	1	505								11					1	516	
Thur-14			575		4			2			9					3	584	
Fri-15	1	1	575		4			2			20					3	595	
Sat-16			478		1						11					1	489	
Sun-17	1	1	400								12					2	412	
Mon-18			455								16					1	471	
Tues-19	2	4	452		1			2			10					2	462	
Wed-20	2	2	488		2			2			11				1	4	499	
Thurs-21	1	1	544		4				1	1	15					5	559	
Fri-22			509		1						6					1	515	
Sat-23	3	3	542		2				2	2	13					3	555	
Sun-24	2	3	390						1	2	8					1	398	
Mon-25	1	1	398					2			6						404	
Tues-26	1	1	370		2						14					7	384	
Wed-27	2	2	525								16					5	541	
Thurs-28	2	2	605		1			2	1	1	17	1				7	622	
Fri-29			510					2			11					2	521	
Sat-30	2	2	379		2			2			15					2	394	
Sun-31	1	1	321		3				1	1	12					4	333	
TOTALS	35	38	13,395	0	36	0	2	24	9	10	358	0	2	0	0	1	91	13,753

Page 1

COMMENTS				NIGHT OPERATIONS				RESTRICTIONS			
	DAY	NIGHT	TOTAL							Violations	Letters
Events	35	9	44	Air Ambulance (AA)	J	1					
Comments	38	10	48	EMS	H	22			Mandatory Restriction (MR)		
Operations (Ops)	13,395	358	13,753	Sheriff's Office	H	23			Runups: Maintenance	0	0
%Events/Ops	7.0%	2.5%	0.3%	Mosquito Control	H	4			Jet Stage 1 day & night Ops	0	0
				Mosquito Control	P	1			Jet Stage 2 day & night Ops	0	0
Comments/events	1.1	1.1	1.1	Public Service	J,H,P	51			Voluntary Restriction (VR)		
				Air Carrier & GA [Other]	H,P	214			Jet Stage 3 night Ops	5	5
% Comments/Ops	0.3%	2.8%	0.3%	Jet Operations	J	93					
				Night Ops - Total	J,H,P	358					

RECURRING NOISE MONITORING PROGRAM RESULTS JANUARY 1 – MARCH 31, 2002

The purpose of this program is to conduct recurring monitoring sessions at selected locations in the airport environs to assist the Naples Airport Authority in identifying any changes in patterns and levels of noise exposure from season to season and year to year. Section I provides a basic description of activity noted during the monitoring period. Section II provides an activity comparison between quarters and a seasonal year-to-year comparison. Section III includes the quarterly decibel levels measured each quarter and a map depicting the monitoring locations and results from the most current monitoring period.

This program includes the following goals:

- Provide an objective basis for identifying long-term changes in noise exposure to correlate the changes in activity levels, facilities, airline schedules, airport rules, etc.
- Provide an objective basis for identifying seasonal variation in noise exposure.
- Provide an objective basis for evaluating geographic variation in noise exposure.
- Provide the interested public with useful, understandable, geographically representative information on long-term noise exposure patterns.
- Address the preceding technical objectives in the most efficient manner possible.

Two sound levels, the Day-Night Average Sound Level (DNL) and the background noise level (L90), were calculated for each site during the monitoring period. The DNL represents noise as it occurs over a 24-hour period, adding a 10-decibel penalty to sound events occurring at night between the hours of 10:00 PM and 7:00 AM. This 10-decibel penalty is applied to account for greater sensitivity to nighttime noise, and the fact that the events at night are often perceived to be more intrusive because nighttime ambient noise is less than daytime ambient noise. L90 is a measure of the background noise level, or the quietest level that would be experienced in the absence of most significant noise-producing human activity, or in the absence of any natural noise such as rain, wind, animals or insects.

Additionally, staff spent several hours at five of the seven locations, specifically documenting aircraft operations and determining what other sources produce significant sound levels in the vicinity of the monitors. Every source will contribute to the overall DNL results, as these sources may be louder than aircraft operations. Any type of “exceedance” occurring during these monitoring periods was noted. An exceedance is an event caused by any type of source (car, aircraft, or siren) which triggers the noise monitor to begin recording an event. An exceedance is only recorded if it lasts greater than five (5) seconds, and is louder than the threshold set on the monitor. During this round of monitoring, all monitor thresholds were set at 60 decibels to get as close as possible to the ambient background noise level at each site.

SECTION I – QUARTERLY SITE ACTIVITY SUMMARY – APPENDIX D

Two of the seven sites were not monitored during this quarter due to heavy construction activity within close proximity to the monitoring locations. All other locations were monitored for approximately a ten day period, and staff were present at each location at least three times for various periods, noting exceedances, sound exposure levels (SEL) of various types of aircraft and background noise levels. Staff has also been able to provide noise monitor briefings, as well as, information about noise issues at the airport. The following SEL’s and overall background noise levels noted in Section III were verified by staff during the on-site visits.

Below is a list of Sound Exposure Level (SEL) observations made.

Aircraft Arriving at Airport:

SITE / LOCATION	AIRCRAFT TYPE	DECIBEL LEVEL
Village Green / 1 ½ miles SW of airport	Citation Jet	72.9 decibels
Wyndemere Country Club / 2 ¼ miles NE of airport	Twin engine Seneca	78.0 decibels
Wyndemere Country Club / 2 ¼ miles NE of airport	Twin engine Beech 1900	82.0 decibels
Wyndemere Country Club / 2 ¼ miles NE of airport	Single engine Cherokee	80.4 decibels

Aircraft Departing Airport:

SITE / LOCATION	AIRCRAFT TYPE	DECIBEL LEVEL
Village Green / 1 ½ miles SW of airport	Twin engine Seminole	76.4 decibels
Springwood / ½ mile SE of airport	Single engine Cessna	80.0 decibels
Springwood / ½ mile SE of airport	Single engine Cherokee	82.3 decibels
Springwood / ½ mile SE of airport	Citation Jet	85.4 decibels
Springwood / ½ mile SE of airport	Twin engine King Air	84.3 decibels
Springwood / ½ mile SE of airport	Hawker Jet	86.3 decibels
Springwood / ½ mile SE of airport	Twin engine Cessna	87.9 decibels

SECTION II – SEASONAL AND ANNUAL COMPARISON OF SITES

Noise Monitoring Site Summary Comparison between the Fourth Quarter of 2001 and the First Quarter of 2002, and a comparison between the same period last year.

A comparison of the five monitoring sites revealed that the DNL decreased at one site and increased at four sites when compared to last quarter. When compared to same period last year, three sites have increased while two sites have decreased. Below is a summary of each site. The changes in background noise are speculative unless staff observed changes in area construction levels, vehicular traffic or other activity. A more complete comparison is now available to compare the same time period on an annual basis, versus a seasonal basis.

The following guidelines may be helpful in interpreting community response to changes in DNL above 55 dB.

<u>Change in DNL</u>	<u>Community Response</u>
0 – 2 dB's	May be noticeable
2 – 5 dB's	Generally noticeable
Over 5 dB's	A change in community reaction is likely

Site 1 – The DNL appears to have increased by 2.6 decibels during the First Quarter. When compared to the same period last year the DNL has increased by 0.1 decibels. The background noise at this site has increased by 0.8 decibels.

Site 2 – The DNL at this site has increased by 0.1 decibels during the First quarter of 2002, and decreased by 1.5 decibels when compared to the same period last year. The background noise level at this site is unavailable.

Site 3 – This site was not monitored due to construction

Site 4 – The DNL of this site increased by 0.3 decibels when compared to last quarter. When compared to the same period last year, the DNL has increased by 1.5 decibels. The background noise level for this site is unavailable.

Site 5 – This site produced a DNL of 55.7 decibels. This data is a decrease of 0.4 decibels when compared to last quarter and an increase of 4.7 decibels when compared to the same period last year. The background noise level at this site is unavailable.

Site 6 – This site was not monitored due to Livingston Road construction.

Site 7 – The DNL at this site increased by 0.4 decibels. When compared to the same quarter last year there is a decrease of 0.4 decibels. There was a 0.9 decibels decrease in background noise at this site.

DNL Comparison			
Site	First Quarter 2001	Fourth Quarter 2001	First Quarter 2002
1	57.6 dB	55.1 dB	57.7 dB
2	59.6 dB	58.0 dB	58.1 dB
3	N/A	N/A	N/A
4	56.9 dB	58.1 dB	58.4 dB
5	51.0 dB	56.1 dB	55.7 dB
6	N/A	N/A	N/A
7	57.3 dB	56.5 dB	56.9 dB

**SECTION III
NOISE MONITORING SITE SUMMARY**

SITES	1st Quarter		2nd Quarter		3rd Quarter		4th Quarter		1st Quarter	
	Jan. - Mar. 2001		Apr. - June 2001		July - Sept. 2001		Oct. - Dec. 2001		Jan. - Mar. 2002	
	Bkgrnd	DNL	Bkgrnd	DNL	Bkgrnd	DNL	Bkgrnd	DNL	Bkgrnd	DNL
1 Springwood-East Naples	48	57.6	49.2	56.7	47.9	58.1	46.2	55.1	47	57.7
2 Mariner's Cove	44.8	59.6	47.7	58.9	46.1	58.9	44.7	58	N/A	58.1
3 First Presbyterian Church - 6th St. South	N/A	N/A	N/A	N/A	N/A	N/A	N/A	N/A	N/A	N/A
4 Village Green - 11th Avenue South	44.8	56.9	50.3	60.3	47.6	62.1	43.8	58.1	N/A	58.4
5 The Conservancy	41.5	51	41.8	53.9	50.4	61.2	43.6	56.1	N/A	55.7
6 FPL Substation - Livingston / GG Pky.	N/A	N/A	N/A	N/A	N/A	N/A	N/A	N/A	N/A	N/A
7 Wyndemere CC	45.2	57.3	47.2	56.4	46	59.1	47	56.5	46.1	56.9

Bkgrnd - The background noise level or the quietest level that would be experienced in the absence of most significant noise-producing human activity.

DNL - Total noise as it occurs over a 24-hour period, adding a 10-decibel penalty to sound events occurring at night between the hours of 10:00 PM and 7:00 AM.