

**NAPLES MUNICIPAL AIRPORT  
AIRPORT TRAFFIC CONTROL TOWER  
AND NAPLES AIRPORT AUTHORITY**

**LETTER OF AGREEMENT**

**EFFECTIVE:** 01 October 2010

**SUBJECT: GRASS RUNWAY (Runway 5/23) OPERATIONAL PROCEDURES**

1. **PURPOSE:** This Letter of Agreement between the Naples Municipal Airport Air Traffic Control Tower, hereafter referred to as "Naples ATCT," and Naples Airport Authority, hereafter referred to as "NAA," establishes standardized local procedures for the operation of the sod runway (runway 5/23) at Naples Municipal Airport.

A Grass Landing strip parallel to runway 5/23 at Naples Municipal Airport, Naples, FL, is available for use to the general aviation public. This 1850' grass landing strip is available for use subject to the following procedures and restrictions.

2. **CANCELLATION:** Letter of Agreement dated 1 September 2000 is hereby canceled.
3. **SCOPE:** The following will cover operational procedures, guidelines and use restrictions for the use of the sod runway at the Naples Municipal Airport. An 1850' X 100' sod runway is located parallel to Runway 5/23 and is available for use to the general aviation public provided that the following operational guidelines and use restrictions and operating conditions are followed.
4. **PROCEDURES:**
- A. All aircraft must request use of the grass strip upon initial contact with the tower (either Ground Control or Tower).
  - B. All departing aircraft requesting grass strip departures will be handled the same as a runway 05 departure. When cleared for take-off, aircraft will taxi across the threshold of the hard surface runway onto the grass and begin take-off roll.
  - C. After landing, the tower will instruct the aircraft on the following exit procedures:
    - 1. The tower may request aircraft to turn left at the roll out end, face the tower and hold in the circular grass area to await clearance to cross runway 05; or

2. Traffic permitting, the tower may request pilots to land and exit to the right at the roll out end, and cross runway 05 at taxiway A-2 (as depicted on attachment 1).

D. All landing aircraft will be expected to roll out to the end of the grass strip and exit between the markers. Exiting at the mid-field point is prohibited.

5. **RESTRICTIONS:**

A. The Naples Airport Authority will determine the surface conditions and suitability for use on a daily basis.

B. This strip will be available for light-weight, single engine (category 1) only.

C. Availability of the strip will be determined by the Naples ATC Tower on a first come, first served, traffic work load permitting basis.

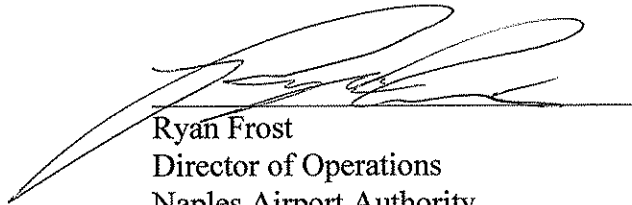
D. Touch and Go's will not be approved due to the length of the strip.

E. The use of the strip will be restricted to VFR, daylight operations ONLY.

F. Use of the strip while runway 14/32 is the active, will be at the discretion of the ATC tower.



Lee Grover  
Air Traffic Manager  
Naples ATCT

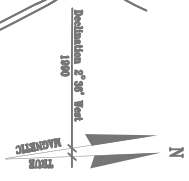


Ryan Frost  
Director of Operations  
Naples Airport Authority





Naples Municipal Airport



not to scale  
February 3, 2014

Enterprise Avenue

Production  
Park