

Pattern Activity:

Observe 1,000' pattern altitude. Keep traffic pattern within ½ to 1 nautical mile of runway. Voluntarily limit touch-and-go patterns to 10 or fewer.

Gulf of Mexico

Preferred Runway 14 and 32 traffic pattern operation area is within ½ to 1 nautical mile southwest of the runway. Left-hand traffic is standard on Runway 32, right-hand traffic is standard on Runway 14.

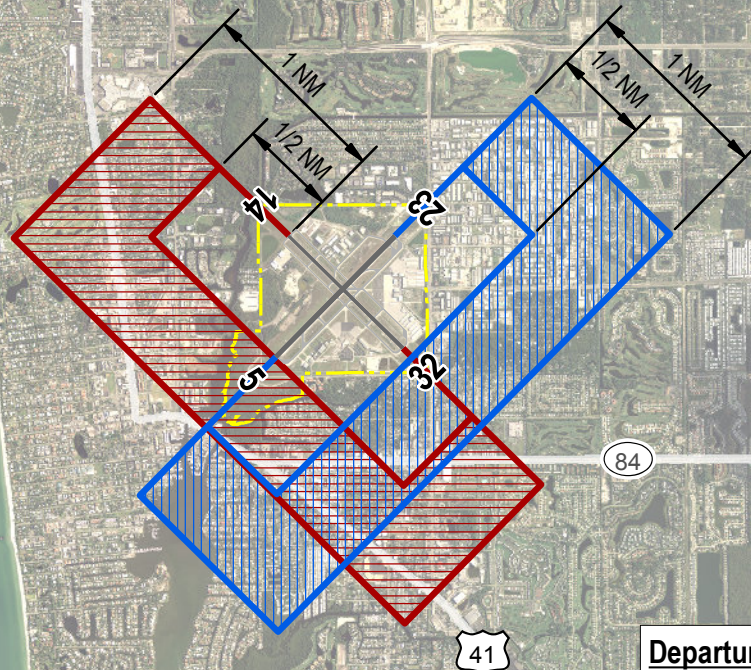
Preferred Runway 5 and 23 traffic pattern operation area is within ½ to 1 nautical mile southeast of the runway. Left-hand traffic is standard on Runway 23, right-hand traffic is standard on Runway 5.

**RECOMMENDED PISTON
FIXED-WING AIRCRAFT
OPERATING PROCEDURES**



NAPLES MUNICIPAL AIRPORT

**All operations strongly discouraged
10 pm to 7 am. No maintenance
runups 10 pm to 7 am.**



Departures and Arrivals:

**Reduce power on takeoff as soon as possible.
Remain as high as possible on approach.**

Operations Outside the Traffic Pattern:

Maintain 2,000 feet over residences.

NOTE: These procedures are not intended to preempt the responsibilities of the pilot-in-command for safe aircraft operations. Recommended procedures are not intended to conflict with instructions from ATC or those which are the exclusive authority of the FAA.