

**Pattern Activity:**

Observe 1,000' pattern altitude. Keep traffic pattern within ½ to 1 nautical mile of runway. Voluntarily limit touch-and-go patterns to 10 or fewer.

*Gulf of Mexico*

**Preferred Runway 14 and 32 traffic pattern operation area is within ½ to 1 nautical mile southwest of the runway. Left-hand traffic is standard on Runway 32, right-hand traffic is standard on Runway 14.**

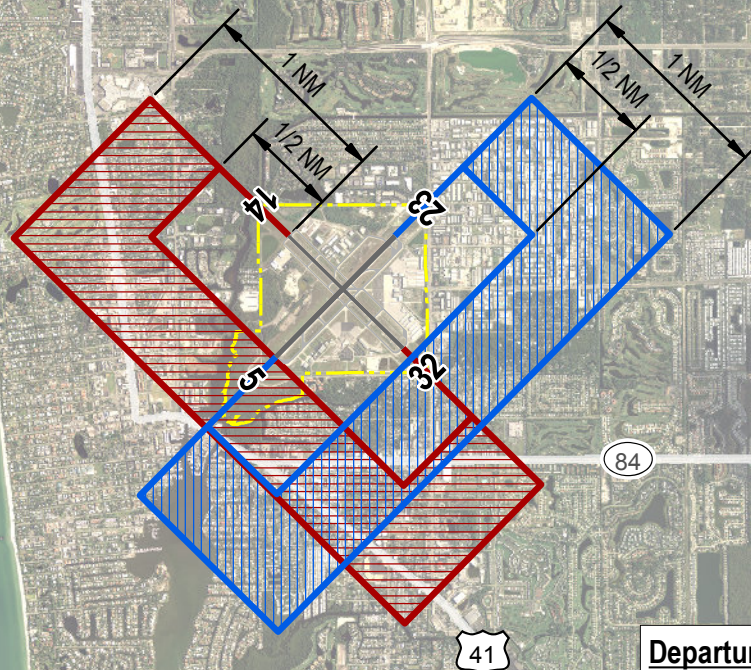
**Preferred Runway 5 and 23 traffic pattern operation area is within ½ to 1 nautical mile southeast of the runway. Left-hand traffic is standard on Runway 23, right-hand traffic is standard on Runway 5.**

**RECOMMENDED PISTON  
FIXED-WING AIRCRAFT  
OPERATING PROCEDURES**



**NAPLES MUNICIPAL AIRPORT**

**All operations strongly discouraged  
10 pm to 7 am. No maintenance  
runups 10 pm to 7 am.**



**Departures and Arrivals:**

**Reduce power on takeoff as soon as possible.  
Remain as high as possible on approach.**

**Operations Outside the Traffic Pattern:**

**Maintain 2,000 feet over residences.**

**NOTE:** These procedures are not intended to preempt the responsibilities of the pilot-in-command for safe aircraft operations. Recommended procedures are not intended to conflict with instructions from ATC or those which are the exclusive authority of the FAA.